

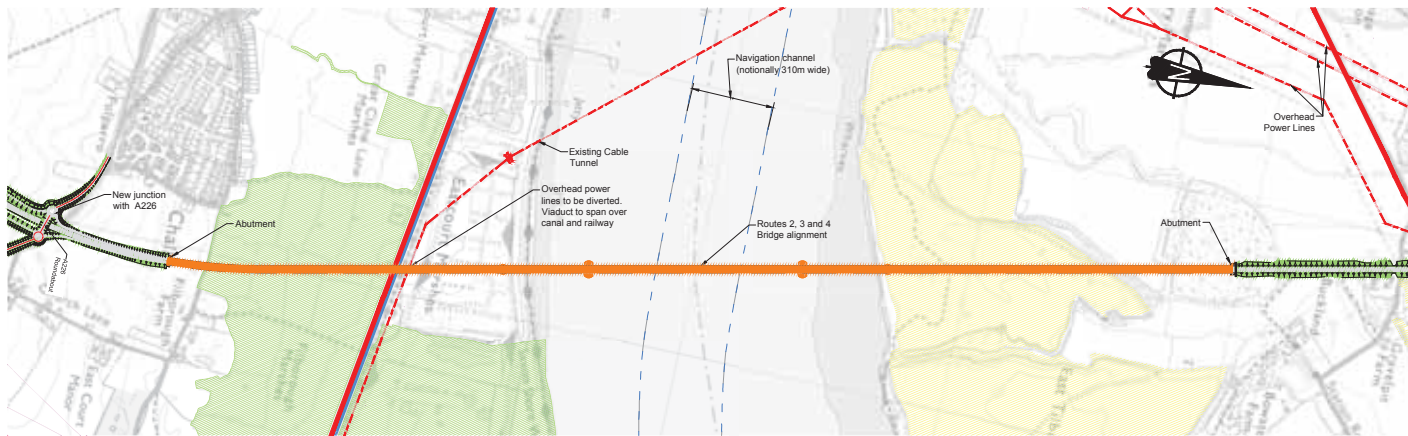
Lower Thames Crossing

Pre-Consultation Scheme Assessment Report
Volume 3: Identification and Description of Shortlist Routes
Section 8: Appendices
Part 4 of 5

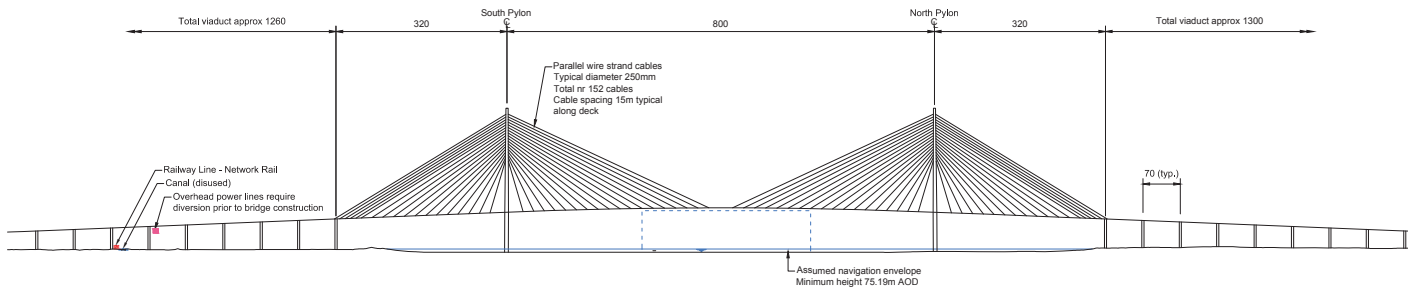
Appendix 3.12

Routes 2, 3 and 4 Bridge General Arrangement Drawing

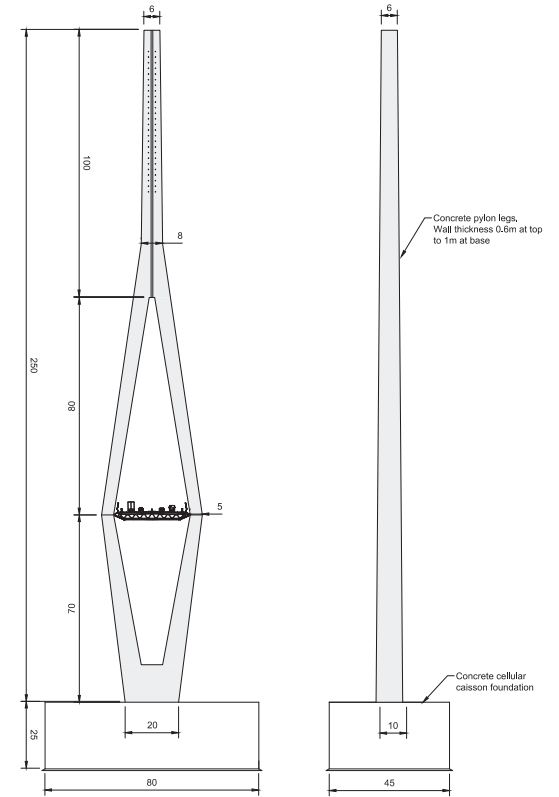
Routes 2, 3 and 4 Bridge Crossing General Arrangement



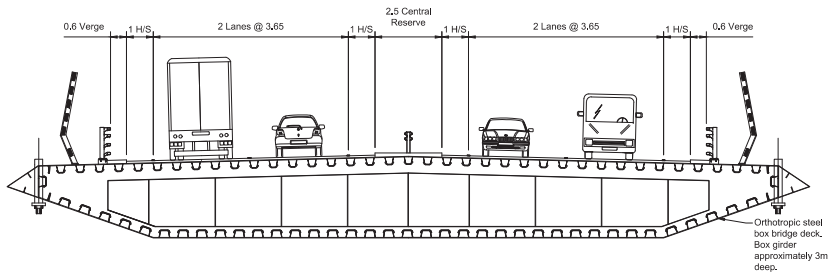
PLAN
SCALE 1:10000



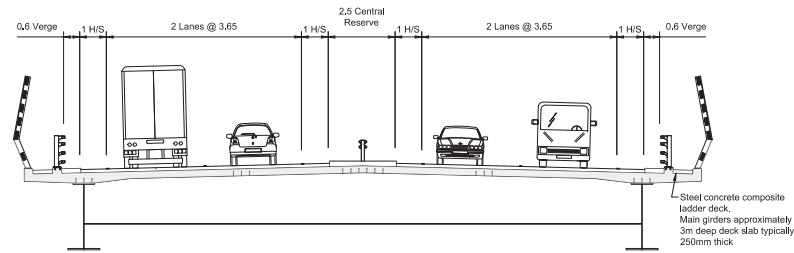
DEVELOPED ELEVATION
SCALE 1:5000



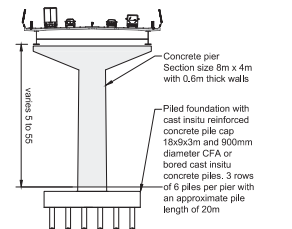
PYLON ELEVATIONS
SCALE 1:1000



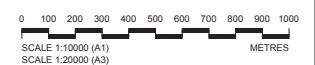
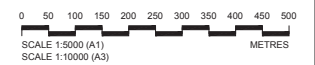
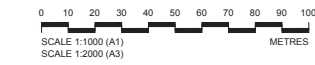
TYPICAL SECTION THROUGH CABLE STAYED BRIDGE DECK
SCALE 1:100



TYPICAL SECTION THROUGH APPROACH VIADUCT DECK
SCALE 1:100



TYPICAL PIER ELEVATION
SCALE 1:500



NOTES

- All dimensions in metres unless shown otherwise.
- All dimensions and structural details are indicative.
- The design shown on these drawings is illustrative and may be subject to change in later stages of the scheme development.

LEGEND

- Proposed crossing structure
- Overhead power lines
- Existing cable tunnel
- Railway line - Network Rail
- Canal (disused)
- Ramsar and SSSI
- Historic landfill site

ILLUSTRATIVE DESIGN

Client

Halcrow Hyder Joint Venture
Burdorp Park
Swindon, SN4 0GD
Tel. +44(0)1793 812479

Project

LOWER THAMES CROSSING

Drawing title

Routes 2, 3 and 4 Bridge Crossing General Arrangement

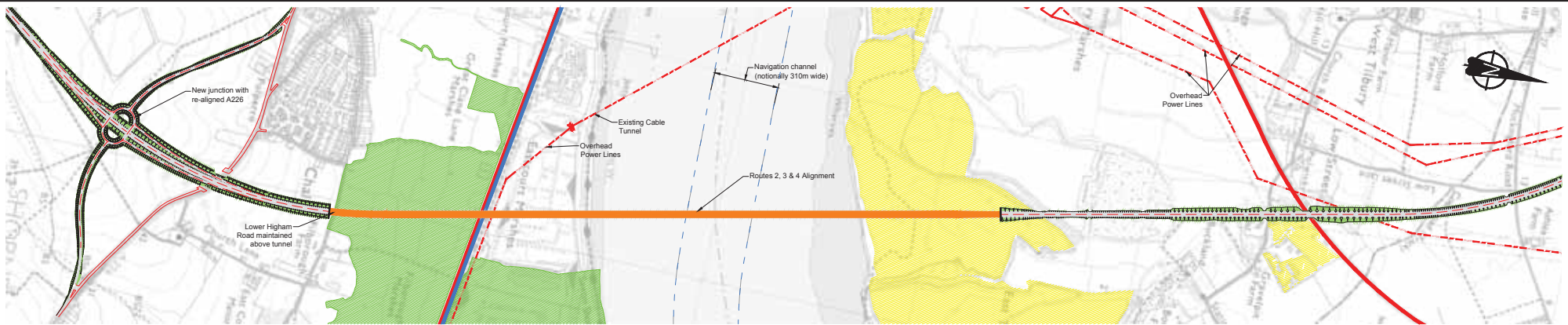
Status	SO	Revision	P01
Scale	AS SHOWN	Date	30-09-15
Drawn By	DM		
Created By	NSK		
Approved By	SIW		
Project No.	HA pav I Originator	Original Size	A1
HA540039	HHJ		
Drawing number			
HA540039-HHJ-SBR-CZZMCZZBR-DR-ST-0009			

PD1	SO	18-01-16	SAR Issue	DM	NSK	SIW
Rev	Status	Rev. Date	Purpose of revision	Drawn	Checked	Approved

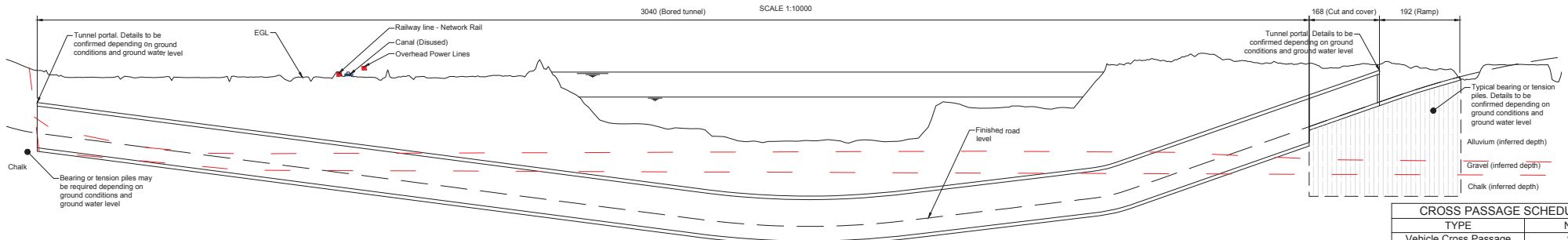
Appendix 3.13

Routes 2, 3 and 4 Bored Tunnel General Arrangement Drawings

Routes 2, 3 and 4 Bored Tunnel Crossing General Arrangement Sheet 1 of 2
Routes 2, 3 and 4 Bored Tunnel Crossing General Arrangement Sheet 2 of 2

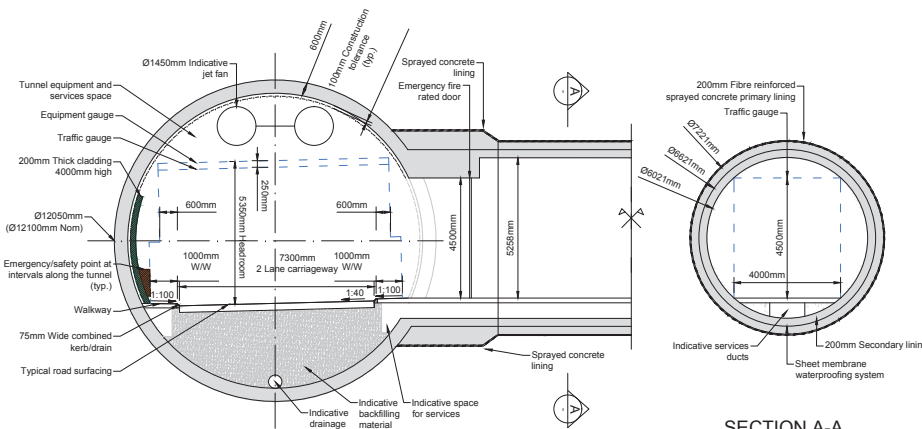


PLAN



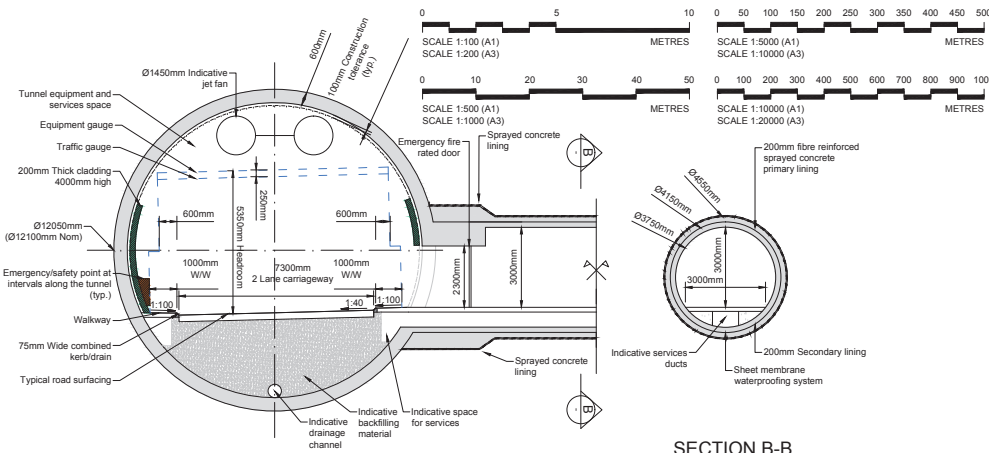
DEVELOPED LONG SECTION
HORIZONTAL SCALE 1:5000, VERTICAL SCALE 1:500

CROSS PASSAGE SCHEDULE	
TYPE	Nr
Vehicle Cross Passage	2
Pedestrian Cross Passage	27
Pedestrian with Sump	1



SECTION A-A

SCALE 1:100



SECTION B-B

SCALE 1:100

TYPICAL BORED TUNNEL SECTION AT VEHICLE CROSS PASSAGE

TYPICAL BORED TUNNEL SECTION AT PEDESTRIAN CROSS PASSAGE

NOTES

- All dimensions in metres unless shown otherwise.
- All dimensions and structural details are indicative.
- The design shown on these drawings is illustrative and may be subject to change in later stages of the scheme development.

LEGEND

- Proposed crossing structure
- Overhead power lines
- Existing cable tunnel
- Railway line - Network Rail
- Canal (disused)
- Ramsar and SSSI
- Historic landfill site

ILLUSTRATIVE DESIGN

Client: **highways england**

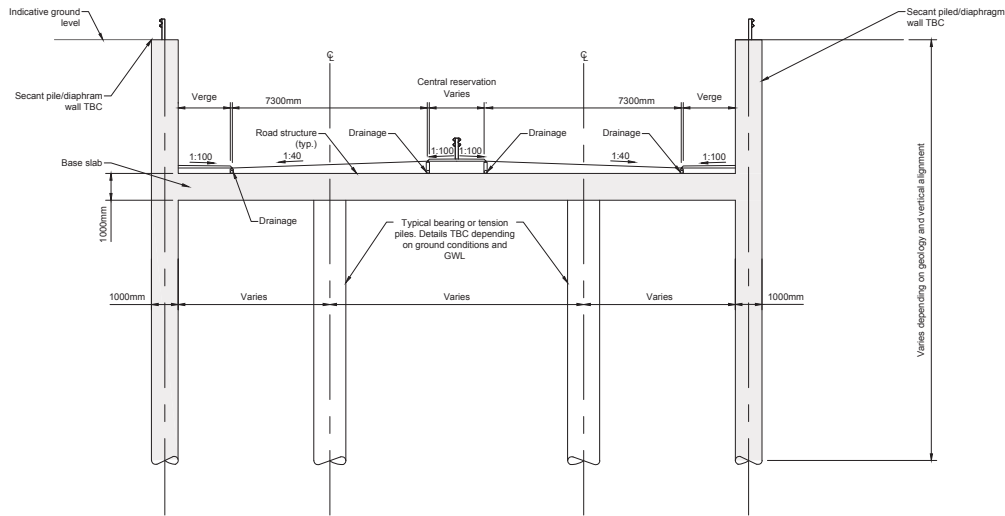
Halcrow Hyder Joint Venture
Burdorpe Park
Swindon, SN4 0QD
Tel: +44(0)1753 812479

Project: **LOWER THAMES CROSSING**

Drawing title: **Routes 2, 3 and 4 Bored Tunnel Crossing General Arrangement Sheet 1 of 2**

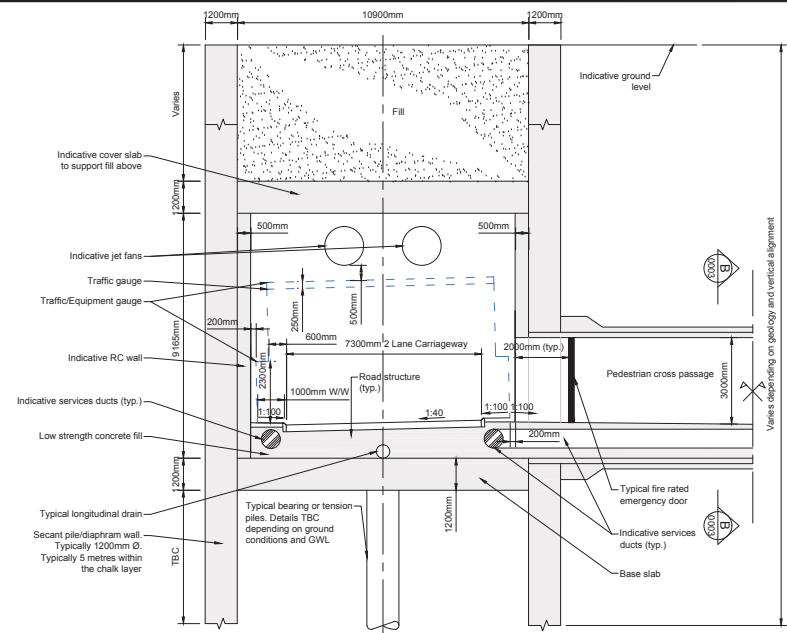
Status	SO	Revision	P01
Scale	AS SHOWN	Date	30-09-15
Drawn By	DM	Checked By	JBL
Approved By	RLD	Original Size	A1
Project No.	HA-PN-HA540039	I Originator	HHJ
Drawing number	HA540039-HHJ-STU-CZMCCZZTU-DR-TN-0009		

PP1	SO	18-01-16	SAR Issue	DM	JBL	RLD
Rev	Status	Rev. Date	Purpose of revision	Drawn	Checked	Approved



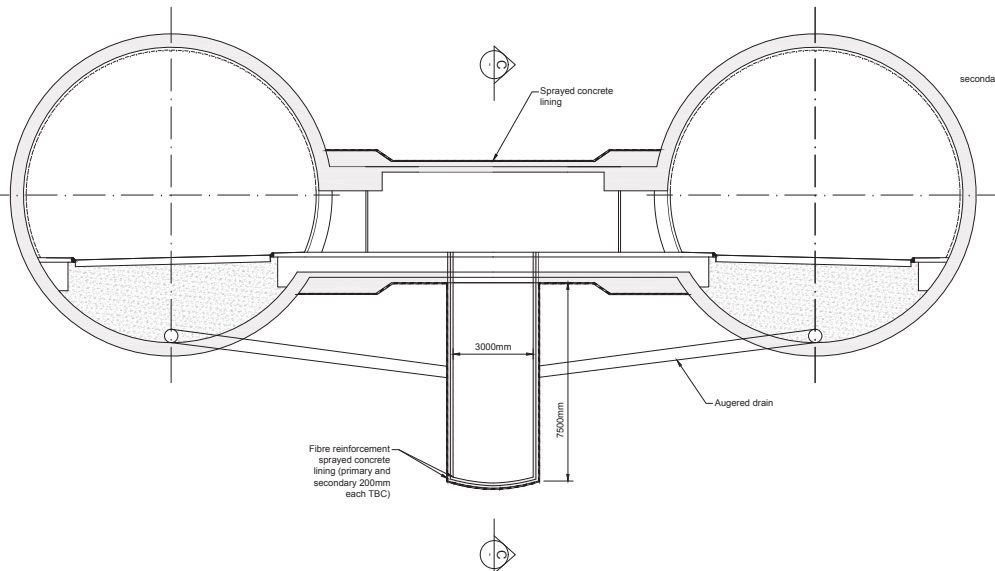
TYPICAL RAMP CROSS SECTION

SCALE 1:100



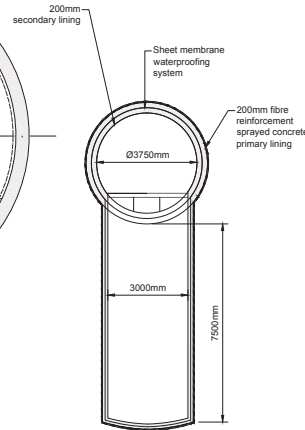
TYPICAL CUT AND COVER CROSS SECTION

SCALE 1:100



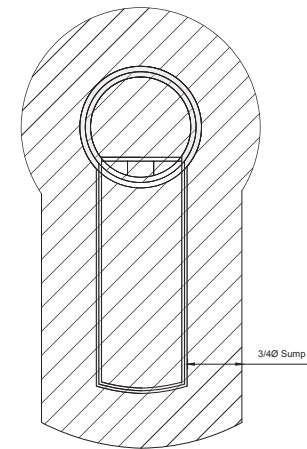
PEDESTRIAN CROSS PASSAGE WITH SUMP (SPECIAL)

SCALE 1:100



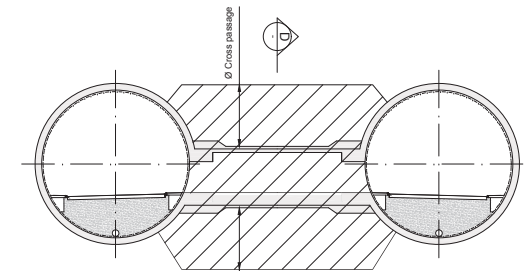
SECTION C-C

SCALE 1:100



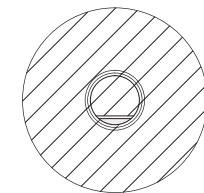
SECTION C-C
TYPICAL GROUND TREATMENT

SCALE 1:100



TYPICAL GROUND TREATMENT FOR CROSS PASSAGE

SCALE 1:200

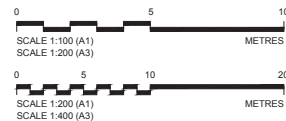


SECTION D-D

SCALE 1:200

NOTES

1. All dimensions in metres unless shown otherwise.
2. All dimensions and structural details are indicative.
3. The design shown on these drawings is illustrative and may be subject to change in later stages of the scheme development.



ILLUSTRATIVE DESIGN

Client: **highways england**

Halcrow Hyder Joint Venture
 Burderop Park
 Swindon, SN4 0QD
 Tel: +44(0)1793 812479

Project: **LOWER THAMES CROSSING**

Drawing title: **Routes 2, 3 and 4 Bored Tunnel Crossing General Arrangement Sheet 2 of 2**

Status	SO	Revision	P01
Scale	AS SHOWN	Date	30-09-15
Drawn By	DM		
Checked By	JBL		
Approved By	RLD		
Project No.	HA INV I	Originator	Original Size
	HA540039	HHJ	A1
Drawing number	HA540039-HHJ-STU-CZMCCZZTU-DR-TN-0010		

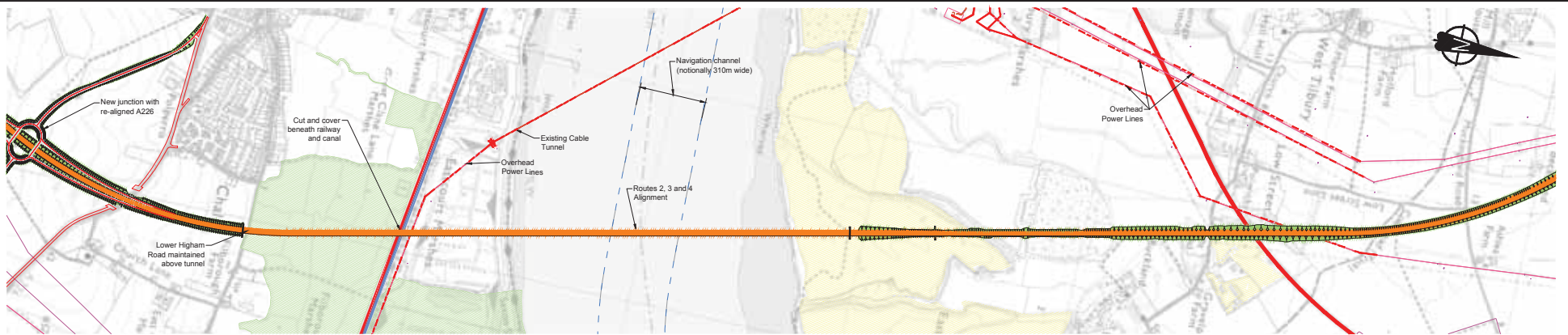
PD1	SO	18-01-16	SAR Issue	DM	JBL	RLD
Rev	Status	Rev. Date	Purpose of revision	Drawn	Checked	Approved

Appendix 3.14

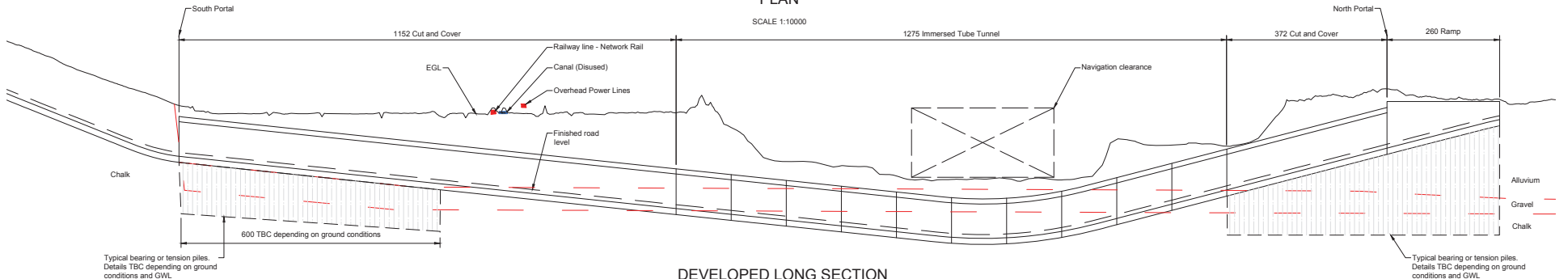
Routes 2, 3 and 4 Immersed Tunnel General Arrangement Drawings

Routes 2, 3 and 4 Immersed Tunnel Crossing General Arrangement Sheet 1 of 2

Routes 2, 3 and 4 Immersed Tunnel Crossing General Arrangement Sheet 2 of 2

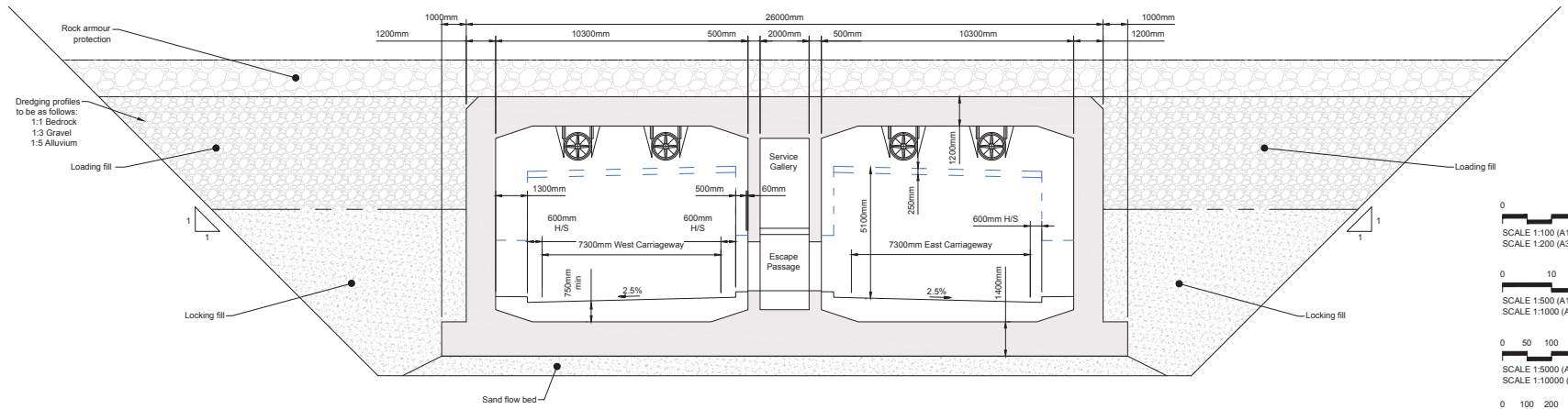


PLAN



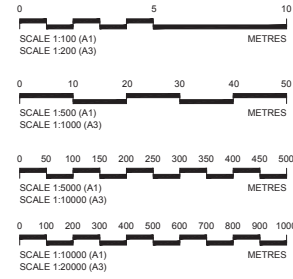
DEVELOPED LONG SECTION

HORIZONTAL SCALE 1:5000, VERTICAL SCALE 1:500



TYPICAL IMMERSED TUNNEL CROSS SECTION

SCALE 1:100



NOTES

- All dimensions in metres unless shown otherwise.
- All dimensions and structural details are indicative.
- The design shown on these drawings is illustrative and may be subject to change in later stages of the scheme development.

LEGEND

- Proposed crossing structure
- Overhead power lines
- Existing cable tunnel
- Railway line - Network Rail
- Canal (disused)
- Ramsar and SSSI
- Historic landfill site

ILLUSTRATIVE DESIGN

PP1	SO	18-01-16	SAR Issue	DM	JBL	RLD
Rev	Status	Rev. Date	Purpose of revision	Drawn	Checked	Approved

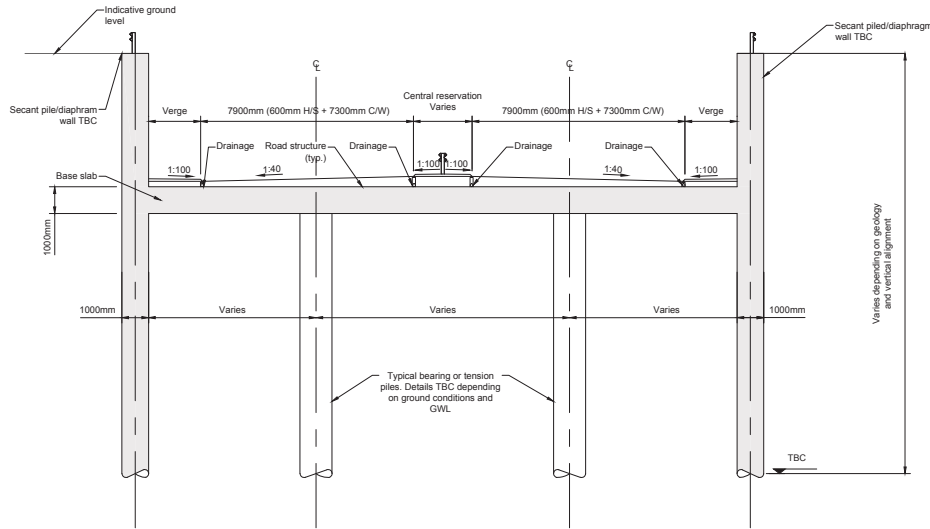
Client

Halcrow Hyder Joint Venture
 Burderop Park
 Swindon, SN4 0QD
 Tel: +44(0)1793 812479

Project LOWER THAMES CROSSING

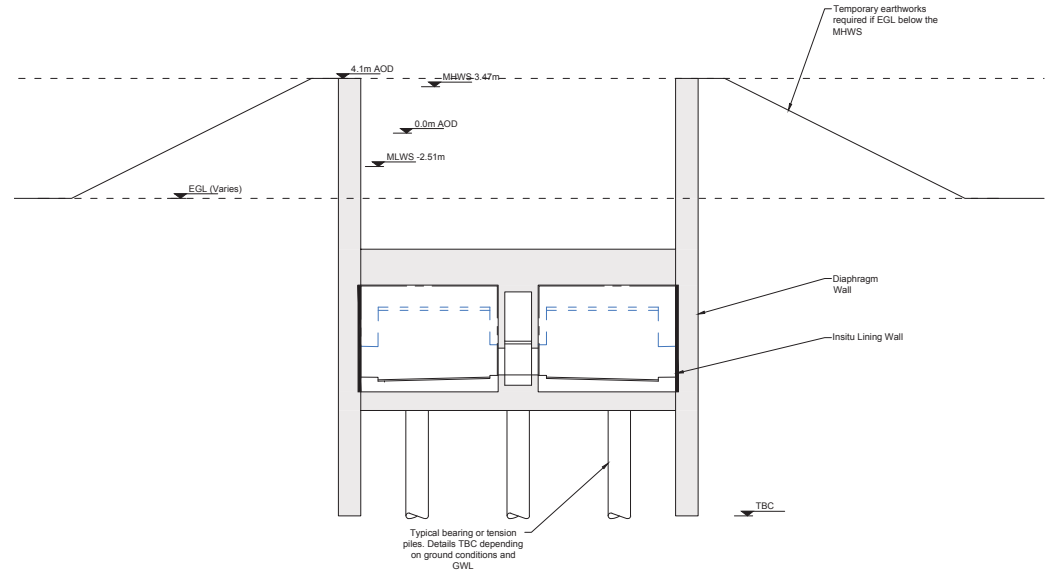
Drawing title Routes 2, 3 and 4 Immersed Tunnel Crossing General Arrangement Sheet 1 of 2

Status	SO	Revision	P01
Scale	AS SHOWN	Date	17-07-15
Drawn By	DM		
Checked By	JBL		
Approved By	RLD		
Project No.	HA_PN_HHJ	I Originator	Original Size
	HA540039	HHJ	A1
Drawing number	HA540039-HHJ-STU-CZMCCZZTU-DR-TN-0011		



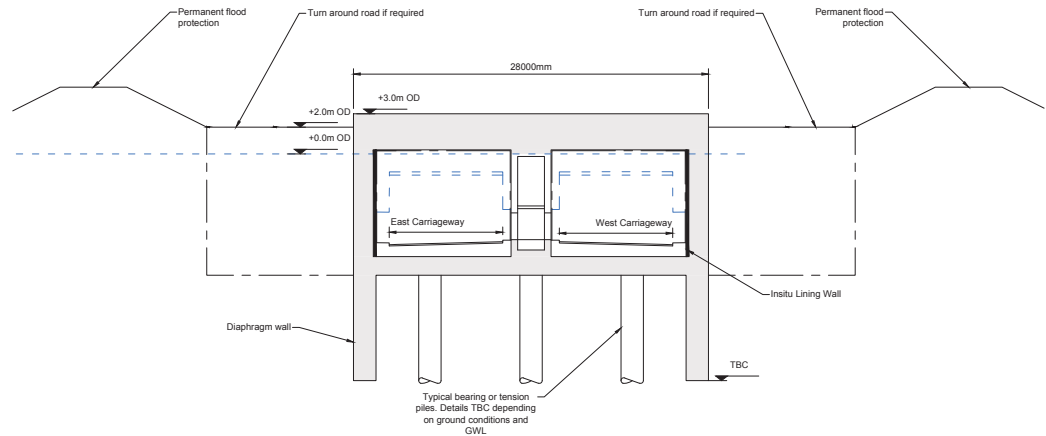
TYPICAL RAMP CROSS SECTION

SCALE 1:100

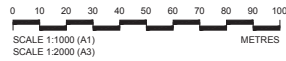


TYPICAL CUT AND COVER CROSS SECTION

SCALE 1:200



ELEVATION ON PORTAL
Section A-A
SCALE 1:200



NOTES

1. All dimensions in metres unless shown otherwise.
2. All dimensions and structural details are indicative.
3. The design shown on these drawings is illustrative and may be subject to change in later stages of the scheme development.

ILLUSTRATIVE DESIGN

Client

Halcrow Hyder Joint Venture
 Burderop Park
 Swindon, SN4 0QD
 Tel: +44(0)1793 812479

Project LOWER THAMES CROSSING
 Drawing title Routes 2, 3 and 4 Immersed Tunnel Crossing General Arrangement Sheet 2 of 2

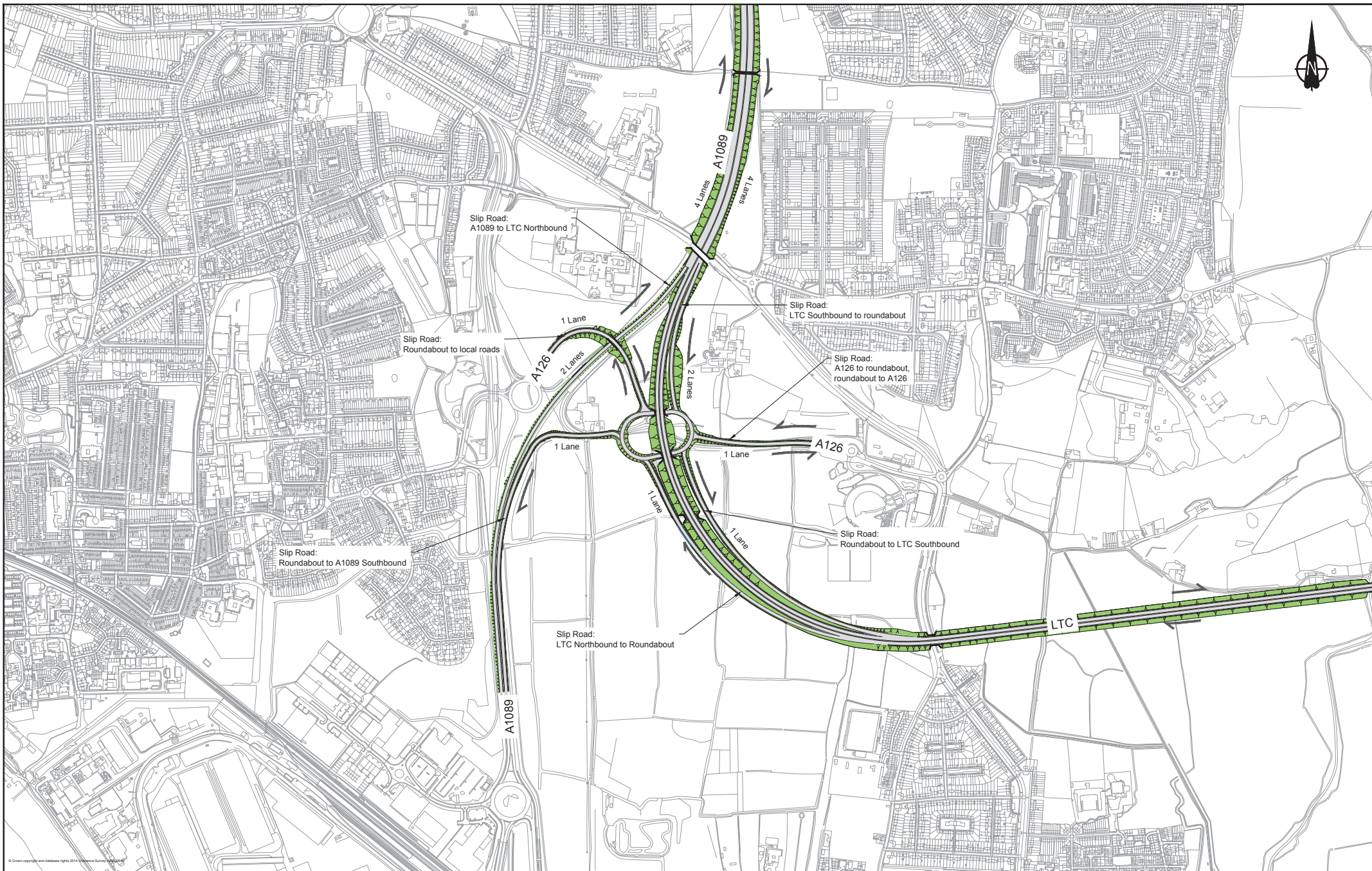
Status	SO	Revision	P01
Scale	AS SHOWN	Date	28-07-15
Drawn By	DM		
Checked By	JSL		
Approved By	RLD		
Project No.	HA_P/N HA540039	I Originator	HHJ
Original Size			A1
Drawing number	HA540039-HHJ-STU-AD0MCZZTU-DR-TN-0012		

PP1	SO	18-01-16	SAR Issue	DM	JBL	RLD
Rev	Status	Rev. Date	Purpose of revision	Drawn	Checked	Approved

Appendix 3.15

Route 2 A1089 Junction Drawing

Route 2 A1089 Grade Separated Junction



© Crown copyright and database rights 2014. Information from Ordnance Survey.

P01	SS	18-01-18	SAR Issue	ASM	MR	GH
Rev	Status	Rev. Date	Purpose of revision	Drawn	Checked	Approved

Key:

- Direction of traffic flow
- Structure
- Existing road stopped up
- Local road diversion

NOTES:

- The design shown on these drawings is illustrative and may be subject to change in later stages of the scheme development.

ILLUSTRATIVE DESIGN

SCALE 1:5000 (A1)
SCALE 1:10000 (A3)

Client

Halcrow Hyder Joint Venture
Burdorop Park
Swindon, SN4 0QD
Tel: +44(0)1793 812479

Project

LOWER THAMES CROSSING

Drawing title

**Route 2
A1089 Grade Separated Junction**

Status	SS	Revision	P01
Scale	1:5000	Date	06-11-15
Drawn By	A Sánchez Muñoz		
Checked By	M Robertson		
Approved By	G Hoyle		
Project No.	HA PIN HA540039	I Originator	HHJ
Original Size			A1
Drawing number	HML-CD2JC03AJL-DR-RD-0001		

Appendix 3.16

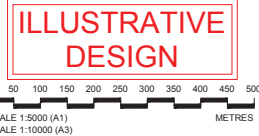
Route 2 A13 Junction Drawing

Route 2 A13 Free Flow Junction



NOTES:

- The design shown on these drawings is illustrative and may be subject to change in later stages of the scheme development.



P01	SS	18-01-18	SAR Issue	ASM	MR	GH
Rev	Status	Rev. Date	Purpose of revision	Drawn	Checked	Approved

Client

Halcrow Hyder Joint Venture
 Burderop Park
 Swindon, SN4 0QD
 Tel: +44(0)1793 812479

Project **LOWER THAMES CROSSING**

Drawing title **Route 2 A13 Free Flow Junction**

Status	SS	Revision	P01
Scale	1:5000	Date	06-11-15
Drawn By	A Sanchez Muñoz		
Checked By	M Robinson		
Approved By	G Hodgson		
Project No.	HA PIN I Originator	Original Size	A1
HA PIN I Originator	HA540039	HHJ	
Drawing number	HML-CD2JC04AJL-DR-RD-0001		

Appendix 3.17

Route 2 M25 Junction Drawing

Routes 2 and 3 M25 Free Flow Junction



This plan is reproduced from Ordnance Survey material with the permission of Ordnance Survey on behalf of the controller of the Mapmakers' Statutory Right of Crown copyright. Unauthorised reproduction infringes Crown copyright and may lead to criminal or civil proceedings. NLS 100000000 (2014).

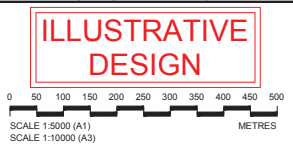
P01	SS	18-01-18	SAR Issue	ASM	MR	GH
Rev	Status	Rev. Date	Purpose of revision	Drawn	Checked	Approved

Key:

	Direction of traffic flow
	Structure
	Existing road stopped up
	Local road diversion

NOTES:

- The design shown on these drawings is illustrative and may be subject to change in later stages of the scheme development.



Client

Halcrow Hyder Joint Venture
Burdorp Park
Swindon, SN4 0QD
Tel. +44(0)1793 812479

Project	LOWER THAMES CROSSING	
Drawing title	Routes 2 and 3 M25 Free Flow Junction	

Status	SS	Revision	P01
Scale	1:5000	Date	06-11-15
Drawn By	A Sanchez Muñoz		
Checked By	M Robinson		
Approved By	G Hodge		
Project No.	HA PIV I	Originator	Original Size
	HA540039	HHJ	A1
Drawing number	HML-CDZJC05AJL-DR-RD-0001		

If you need help accessing this or any other Highways England information, please call **0300 123 5000** and we will help you.

© Crown copyright 2016.

You may re-use this information (not including logos) free of charge in any format or medium, under the terms of the Open Government Licence. To view this licence: visit www.nationalarchives.gov.uk/doc/open-government-licence/ write to the **Information Policy Team, The National Archives, Kew, London TW9 4DU**, or email psi@nationalarchives.gsi.gov.uk.

This document is also available on our website at www.gov.uk/highways

If you have any enquiries about this publication email info@highwaysengland.co.uk or call **0300 123 5000***. Please quote the Highways England publications code **PR133/15**

Highways England creative job number s150687

Report No HA540039-HHJ-ZZZ-REP-ZZZ-010

*Calls to 03 numbers cost no more than a national rate call to an 01 or 02 number and must count towards any inclusive minutes in the same way as 01 and 02 calls. These rules apply to calls from any type of line including mobile, BT, other fixed line or payphone. Calls may be recorded or monitored.

Registered office Bridge House, 1 Walnut Tree Close, Guildford GU1 4LZ
Highways England Company Limited registered in England and Wales number 09346363

The Pre-Consultation Scheme Assessment Report details the assessment of options leading up to consultation. A final Scheme Assessment Report will be published post consultation.