

NOTES:  
 1. For general arrangements at 1:5000 scale refer to sheets 1 - 3 & 5.  
 2. For multi-utilities location see the Utilities and Pylons chapter of the Guide.  
 3. For the location of the Temporary Pylons see the Utilities and Pylons chapter of the Guide.

0 100 200 300 400 500 600 700 800 900 1000  
 SCALE 1:10000 (A1) METRES

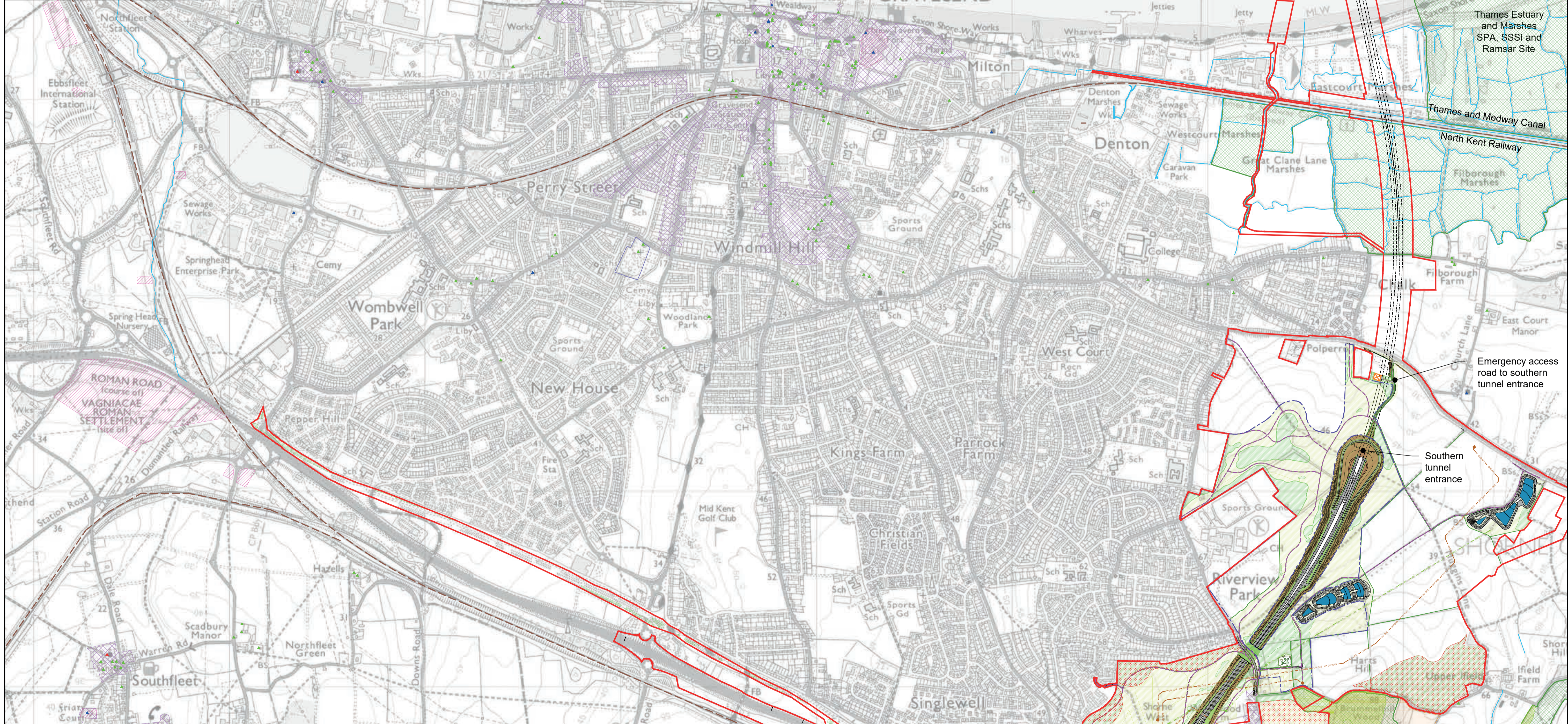
\*Contains Environment Agency information. © Environment Agency and/or database right 2020.  
 This map is reproduced from Ordnance Survey material with the permission of Ordnance Survey on behalf of the controller of Her Majesty's Stationery Office © Crown copyright.  
 Unauthorised reproduction infringes Crown copyright and may lead to prosecution or civil proceedings. AL 100030649 (2020)

ENGINEERING AND CONSTRUCTION	BOUNDARIES	UTILITIES	EXISTING ENVIRONMENTAL FEATURES	PROPOSED ENVIRONMENTAL MITIGATION	FLOOD COMPENSATION
<ul style="list-style-type: none"> <li>New Carriageway</li> <li>Railway line</li> <li>Overbridge</li> <li>Underpass</li> <li>Traffic sign</li> <li>Gantry</li> <li>Lighting</li> </ul>	<ul style="list-style-type: none"> <li>Development boundary</li> <li>Registered park or garden</li> <li>Potential relocated Travellers site</li> <li>Grade I listed building</li> <li>Grade II listed building</li> <li>Grade II* listed building</li> </ul>	<ul style="list-style-type: none"> <li>Retaining wall</li> <li>Maintenance access</li> <li>Realigned Gas</li> <li>Realigned or modified overhead cable</li> <li>Diversion ties into existing</li> <li>Gas or Electricity substation</li> </ul>	<ul style="list-style-type: none"> <li>Area of Outstanding Natural Beauty (AONB)</li> <li>Site of Special Scientific Interest (SSSI)</li> <li>Ancient Woodland</li> <li>Conservation Area</li> <li>Scheduled monument</li> <li>Community Forest</li> <li>Watercourse</li> </ul>	<ul style="list-style-type: none"> <li>Open space provision, replacement open space and replacement common land</li> <li>Proposed woodland planting</li> <li>Proposed grassland planting</li> <li>Potential receptor site for ancient woodland compensation</li> <li>Potential receptor site for translocation of protected species</li> <li>Ecology protection measures</li> </ul>	<ul style="list-style-type: none"> <li>Flood Compensation Area</li> <li>Hedgerow</li> <li>Watercourse diversion</li> </ul>

**PROPOSALS FOR CONSULTATION**

Project LOWER THAMES CROSSING  
 DESIGN REFINEMENT CONSULTATION

Drawing title  
**GENERAL ARRANGEMENT SHEET 1**



**NOTES:**  
 1. For general arrangements at 1:50000 scale refer to sheets 4 - 8.  
 2. For multi-utilities location see the Utilities and Pylons chapter of the Guide.  
 3. For the location of the Temporary Pylons see the Utilities and Pylons chapter of the Guide.

0 100 200 300 400 500 600 700 800 900 1000  
 SCALE 1:10000 (A1) METRES

\*Contains Environment Agency information. © Environment Agency and/or database right 2020.  
 This map is reproduced from Ordnance Survey material with the permission of Ordnance Survey on behalf of the controller of Her Majesty's Stationery Office. © Crown copyright. Unauthorised reproduction infringes Crown copyright and may lead to prosecution or civil proceedings. AL 100030649 (2020)

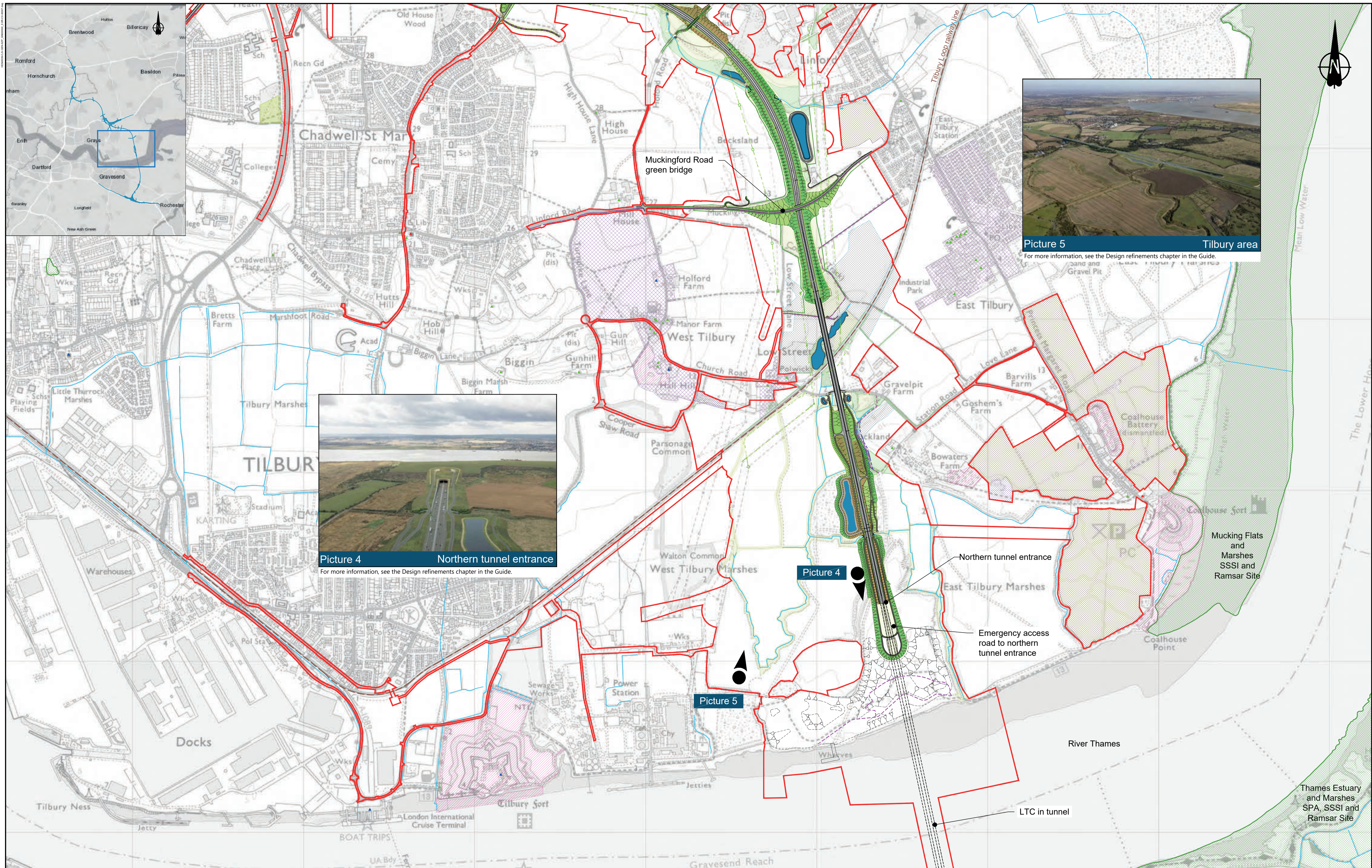
ENGINEERING AND CONSTRUCTION	BOUNDARIES	UTILITIES	EXISTING ENVIRONMENTAL FEATURES	PROPOSED ENVIRONMENTAL MITIGATION
<ul style="list-style-type: none"> <li>New Carriageway</li> <li>Railway line</li> <li>Overbridge</li> <li>Underpass</li> <li>Traffic sign</li> <li>Gantry</li> <li>Lighting</li> </ul>	<ul style="list-style-type: none"> <li>Development boundary</li> <li>Registered park or garden</li> <li>Potential relocated Travellers site</li> </ul>	<ul style="list-style-type: none"> <li>Realigned Gas</li> <li>Realigned or modified overhead cable</li> <li>Diversion ties into existing</li> <li>Gas or Electricity substation</li> </ul>	<ul style="list-style-type: none"> <li>Grade I listed building</li> <li>Grade II listed building</li> <li>Grade II* listed building</li> </ul>	<ul style="list-style-type: none"> <li>Open space provision, replacement open space and replacement common land</li> <li>Proposed woodland planting</li> <li>Proposed grassland planting</li> <li>Potential receptor site for ancient woodland compensation</li> <li>Potential receptor site for translocation of protected species</li> <li>Ecology protection measures</li> </ul>
<ul style="list-style-type: none"> <li>Pond</li> <li>Footpath, Cycleway or Bridleway route</li> <li>Tunnel</li> <li>Earthworks - Cutting</li> <li>Earthworks - Embankment</li> <li>Earthworks - Flood protection bund/false cutting</li> <li>Verge</li> </ul>	<ul style="list-style-type: none"> <li>Retaining wall</li> <li>Maintenance access</li> </ul>	<ul style="list-style-type: none"> <li>Area of Outstanding Natural Beauty (AONB)</li> <li>Site of Special Scientific Interest (SSSI)</li> <li>Ancient Woodland</li> <li>Conservation Area</li> <li>Scheduled monument</li> <li>Community Forest</li> <li>Watercourse</li> </ul>	<ul style="list-style-type: none"> <li>Flood Compensation Area</li> <li>Hedgerow</li> <li>Watercourse diversion</li> </ul>	

Client **highways england**

Project **LOWER THAMES CROSSING**  
**DESIGN REFINEMENT CONSULTATION**

Drawing title **GENERAL ARRANGEMENT**  
**SHEET 2**

**PROPOSALS FOR CONSULTATION**



**NOTES:**  
 1. For general arrangements at 1:50000 scale refer to sheets 8 - 10.  
 2. For multi-utilities location see the Utilities and Pylons chapter of the Guide.  
 3. For the location of the Temporary Pylons see the Utilities and Pylons chapter of the Guide.

0 100 200 300 400 500 600 700 800 900 1000  
 SCALE 1:10000 (A1) METRES

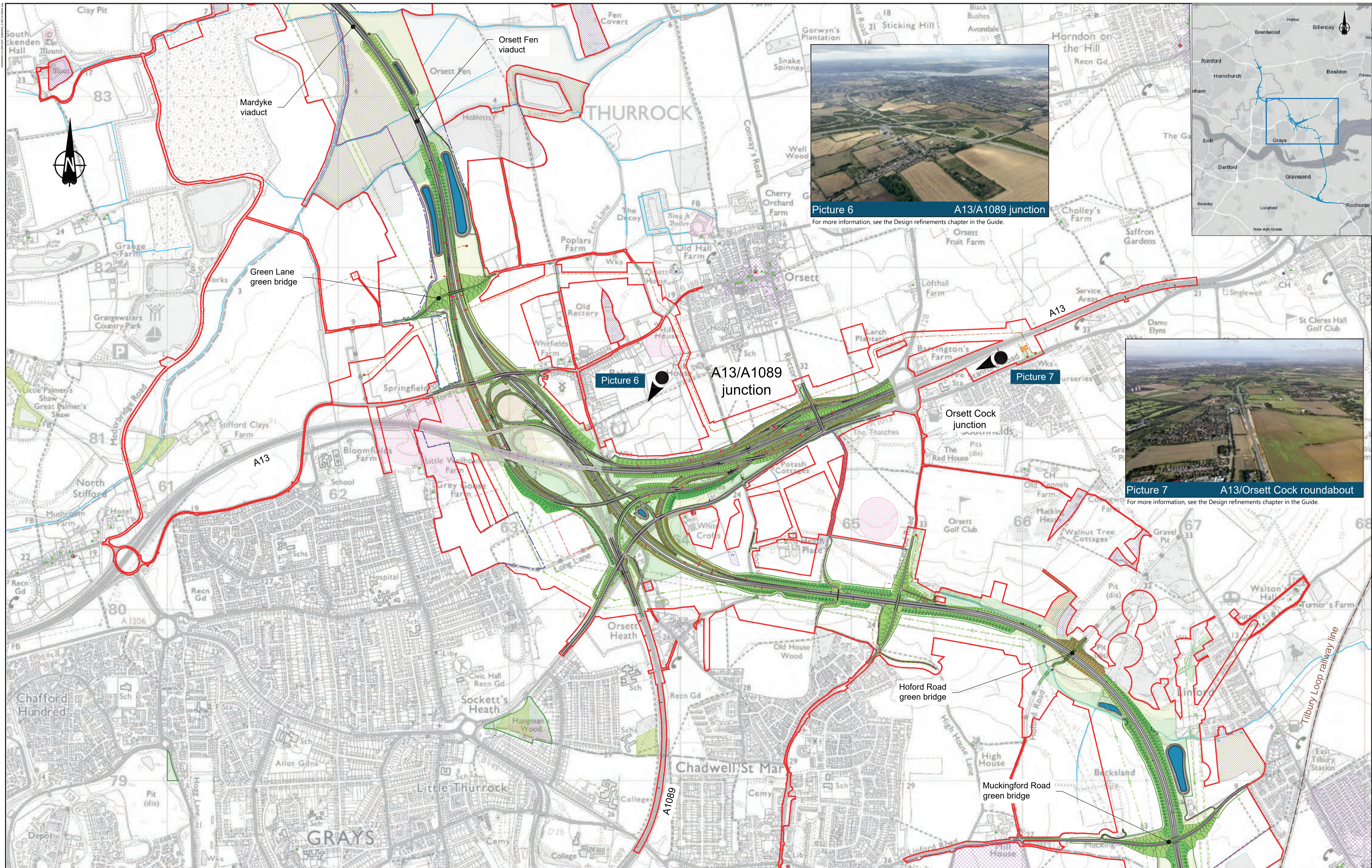
ENGINEERING AND CONSTRUCTION	BOUNDARIES	EXISTING ENVIRONMENTAL FEATURES	PROPOSED ENVIRONMENTAL MITIGATION
<ul style="list-style-type: none"> <li>New Carriageway</li> <li>Railway line</li> <li>Overbridge</li> <li>Underpass</li> <li>Traffic sign</li> <li>Gantry</li> <li>Lighting</li> </ul>	<ul style="list-style-type: none"> <li>Development boundary</li> <li>Registered park or garden</li> <li>Potential relocated Travellers site</li> </ul>	<ul style="list-style-type: none"> <li>Grade I listed building</li> <li>Grade II listed building</li> <li>Grade II* listed building</li> </ul>	<ul style="list-style-type: none"> <li>Open space provision, replacement open space and replacement common land</li> <li>Proposed woodland planting</li> <li>Proposed grassland planting</li> <li>Potential receptor site for ancient woodland compensation</li> <li>Potential receptor site for translocation of protected species</li> <li>Ecology protection measures</li> </ul>
<ul style="list-style-type: none"> <li>Pond</li> <li>Footpath, Cycleway or Bridleway route</li> <li>Tunnel</li> <li>Earthworks - Cutting</li> <li>Earthworks - Embankment</li> <li>Earthworks - Flood protection bund/flood cutting</li> <li>Verge</li> </ul>	<ul style="list-style-type: none"> <li>Maintenance access</li> <li>Retaining wall</li> <li>Utilities</li> <li>Realigned Gas</li> <li>Realigned or modified overhead cable</li> <li>Diversion ties into existing</li> <li>Gas or Electricity substation</li> </ul>	<ul style="list-style-type: none"> <li>Area of Outstanding Natural Beauty (AONB)</li> <li>Site of Special Scientific Interest (SSSI)</li> <li>Ancient Woodland</li> <li>Conservation Area</li> <li>Scheduled monument</li> <li>Community Forest</li> <li>Watercourse</li> </ul>	<ul style="list-style-type: none"> <li>Flood Compensation Area</li> <li>Hedgerow</li> <li>Watercourse diversion</li> </ul>

Client: **highways england**

Project: **LOWER THAMES CROSSING DESIGN REFINEMENT CONSULTATION**

Drawing title: **GENERAL ARRANGEMENT SHEET 3**

**PROPOSALS FOR CONSULTATION**



**Picture 6** A13/A1089 junction  
For more information, see the Design refinements chapter in the Guide.



**Picture 7** A13/Orsett Cock roundabout  
For more information, see the Design refinements chapter in the Guide.

**NOTES:**  
 1. For general arrangements at 1:5000 scale refer to sheets 10 - 15.  
 2. For multi-utilities location see the Utilities and Pylons chapter of the Guide.  
 3. For the location of the Temporary Pylons see the Utilities and Pylons chapter of the Guide.

0 100 200 300 400 500 600 700 800 900 1000  
 SCALE 1:10000 (A1) METRES

This map is reproduced from Ordnance Survey material with the permission of Ordnance Survey on behalf of the controller of Her Majesty's Stationery Office. © Crown copyright. Unauthorised reproduction infringes Crown copyright and may lead to prosecution or civil proceedings. AL 100030649 (2020)

ENGINEERING AND CONSTRUCTION	BOUNDARIES	EXISTING ENVIRONMENTAL FEATURES	PROPOSED ENVIRONMENTAL MITIGATION
<ul style="list-style-type: none"> <li>New Carriageway</li> <li>Railway line</li> <li>Overbridge</li> <li>Underpass</li> <li>Traffic sign</li> <li>Gantry</li> <li>Lighting</li> </ul>	<ul style="list-style-type: none"> <li>Development boundary</li> <li>Registered park or garden</li> <li>Potential relocated Travellers site</li> </ul>	<ul style="list-style-type: none"> <li>Grade I listed building</li> <li>Grade II listed building</li> <li>Grade II* listed building</li> </ul>	<ul style="list-style-type: none"> <li>Open space provision, replacement open space and replacement common land</li> <li>Proposed woodland planting</li> <li>Proposed grassland planting</li> <li>Potential receptor site for ancient woodland compensation</li> <li>Potential receptor site for translocation of protected species</li> <li>Ecology protection measures</li> </ul>
<ul style="list-style-type: none"> <li>Pond</li> <li>Footpath, Cycleway or Bridleway route</li> <li>Tunnel</li> <li>Earthworks - Cutting</li> <li>Earthworks - Embankment</li> <li>Earthworks - Flood protection bund/false cutting</li> <li>Verge</li> </ul>	<ul style="list-style-type: none"> <li>Retaining wall</li> <li>Maintenance access</li> <li>Utilities</li> <li>Realigned Gas</li> <li>Realigned or modified overhead cable</li> <li>Diversion ties into existing</li> <li>Gas or Electricity substation</li> </ul>	<ul style="list-style-type: none"> <li>Area of Outstanding Natural Beauty (AONB)</li> <li>Site of Special Scientific Interest (SSSI)</li> <li>Ancient Woodland</li> <li>Conservation Area</li> <li>Scheduled monument</li> <li>Community Forest</li> <li>Watercourse</li> </ul>	<ul style="list-style-type: none"> <li>Flood Compensation Area</li> <li>Hedgerow</li> <li>Watercourse diversion</li> </ul>

**PROPOSALS FOR CONSULTATION**

Project LOWER THAMES CROSSING  
 DESIGN REFINEMENT CONSULTATION

Drawing title  
**GENERAL ARRANGEMENT SHEET 4**



**Picture 9** LTC/M25 junction

For more information, see the Design refinements chapter in the Guide.



**Picture 8** North Road over LTC

For more information, see the Design refinements chapter in the Guide.



**NOTES:**  
 1. For general arrangements at 1:50000 scale refer to sheets 15 - 19.  
 2. For multi-utilities location see the Utilities and Pylons chapter of the Guide.  
 3. For the location of the Temporary Pylons see the Utilities and Pylons chapter of the Guide.

0 100 200 300 400 500 600 700 800 900 1000  
 SCALE 1:10000 (A1) METRES

\*Contains Environment Agency information. © Environment Agency and/or database right 2020.  
 This map is reproduced from Ordnance Survey material with the permission of Ordnance Survey on behalf of the controller of Her Majesty's Stationery Office © Crown copyright.  
 Unauthorised reproduction infringes Crown copyright and may lead to prosecution or civil proceedings. AL 100030649 (2020)

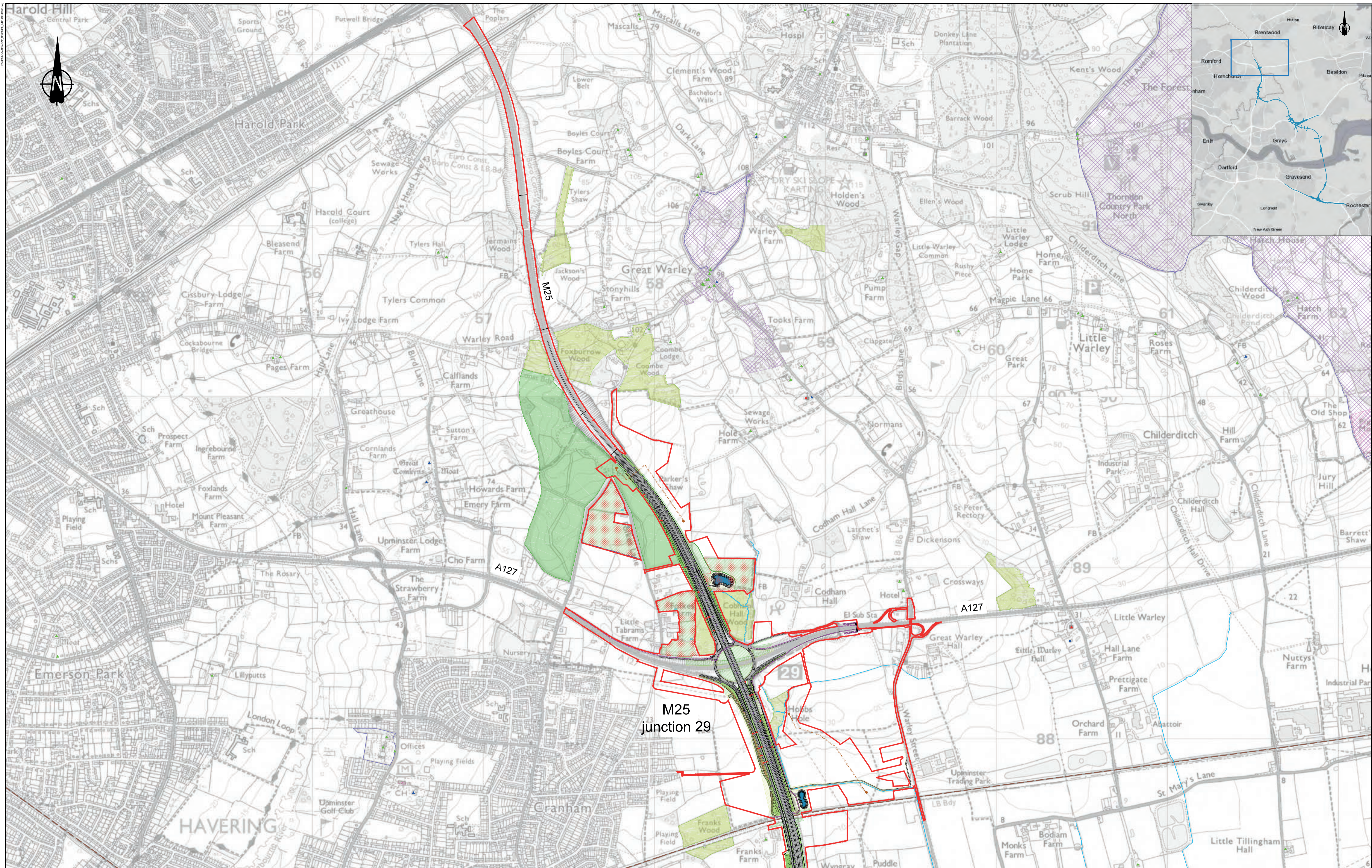
ENGINEERING AND CONSTRUCTION	BOUNDARIES	EXISTING ENVIRONMENTAL FEATURES	PROPOSED ENVIRONMENTAL MITIGATION
<ul style="list-style-type: none"> <li>New Carriageway</li> <li>Railway line</li> <li>Overbridge</li> <li>Underpass</li> <li>Traffic sign</li> <li>Gantry</li> <li>Lighting</li> </ul>	<ul style="list-style-type: none"> <li>Development boundary</li> <li>Registered park or garden</li> <li>Potential relocated Travellers site</li> </ul>	<ul style="list-style-type: none"> <li>Grade I listed building</li> <li>Grade II listed building</li> <li>Grade II* listed building</li> </ul>	<ul style="list-style-type: none"> <li>Open space provision, replacement open space and replacement common land</li> <li>Proposed woodland planting</li> <li>Proposed grassland planting</li> <li>Potential receptor site for ancient woodland compensation</li> <li>Potential receptor site for translocation of protected species</li> <li>Ecology protection measures</li> </ul>
<ul style="list-style-type: none"> <li>Pond</li> <li>Footpath, Cycleway or Bridleway route</li> <li>Tunnel</li> <li>Earthworks - Cutting</li> <li>Earthworks - Embankment</li> <li>Earthworks - Flood protection bund/false cutting</li> <li>Verge</li> </ul>	<ul style="list-style-type: none"> <li>Retaining wall</li> <li>Maintenance access</li> <li>Utilities</li> <li>Realigned Gas</li> <li>Realigned or modified overhead cable</li> <li>Diversion ties into existing</li> <li>Gas or Electricity substation</li> </ul>	<ul style="list-style-type: none"> <li>Area of Outstanding Natural Beauty (AONB)</li> <li>Site of Special Scientific Interest (SSSI)</li> <li>Ancient Woodland</li> <li>Conservation Area</li> <li>Scheduled monument</li> <li>Community Forest</li> <li>Watercourse</li> </ul>	<ul style="list-style-type: none"> <li>Flood Compensation Area</li> <li>Hedgerow</li> <li>Watercourse diversion</li> </ul>

Client **highways england**

Project **LOWER THAMES CROSSING**  
**DESIGN REFINEMENT CONSULTATION**

Drawing title **GENERAL ARRANGEMENT**  
**SHEET 5**

**PROPOSALS FOR CONSULTATION**



**NOTES:**  
 1. For general arrangements at 1:5000 scale refer to sheets 20 - 21.  
 2. For multi-utilities location see the Utilities and Pylons chapter of the Guide.  
 3. For the location of the Temporary Pylons see the Utilities and Pylons chapter of the Guide.

0 100 200 300 400 500 600 700 800 900 1000  
 SCALE 1:10000 (A1) METRES

This map is reproduced from Ordnance Survey material with the permission of Ordnance Survey on behalf of the controller of Her Majesty's Stationery Office. © Crown copyright. Unauthorised reproduction infringes Crown copyright and may lead to prosecution or civil proceedings. AL 100030649 (2020)

ENGINEERING AND CONSTRUCTION	BOUNDARIES	EXISTING ENVIRONMENTAL FEATURES	PROPOSED ENVIRONMENTAL MITIGATION
<ul style="list-style-type: none"> <li>New Carriageway</li> <li>Railway line</li> <li>Overbridge</li> <li>Underpass</li> <li>Traffic sign</li> <li>Gantry</li> <li>Lighting</li> </ul>	<ul style="list-style-type: none"> <li>Development boundary</li> <li>Registered park or garden</li> <li>Potential relocated Travellers site</li> </ul>	<ul style="list-style-type: none"> <li>Grade I listed building</li> <li>Grade II listed building</li> <li>Grade II* listed building</li> </ul>	<ul style="list-style-type: none"> <li>Open space provision, replacement open space and replacement common land</li> <li>Proposed woodland planting</li> <li>Proposed grassland planting</li> <li>Potential receptor site for ancient woodland compensation</li> <li>Potential receptor site for translocation of protected species</li> <li>Ecology protection measures</li> </ul>
<ul style="list-style-type: none"> <li>Pond</li> <li>Footpath, Cycleway or Bridleway route</li> <li>Tunnel</li> <li>Earthworks - Cutting</li> <li>Earthworks - Embankment</li> <li>Earthworks - Flood protection bund/false cutting</li> <li>Verge</li> </ul>	<ul style="list-style-type: none"> <li>Retaining wall</li> <li>Maintenance access</li> <li>Utilities</li> <li>Realigned Gas</li> <li>Realigned or modified overhead cable</li> <li>Diversion ties into existing</li> <li>Gas or Electricity substation</li> </ul>	<ul style="list-style-type: none"> <li>Area of Outstanding Natural Beauty (AONB)</li> <li>Site of Special Scientific Interest (SSSI)</li> <li>Ancient Woodland</li> <li>Conservation Area</li> <li>Scheduled monument</li> <li>Community Forest</li> <li>Watercourse</li> </ul>	<ul style="list-style-type: none"> <li>Flood Compensation Area</li> <li>Hedgerow</li> <li>Watercourse diversion</li> </ul>

Client

**LOWER THAMES CROSSING**

**DESIGN REFINEMENT CONSULTATION**

Drawing title

**GENERAL ARRANGEMENT**

**SHEET 6**

**PROPOSALS FOR CONSULTATION**