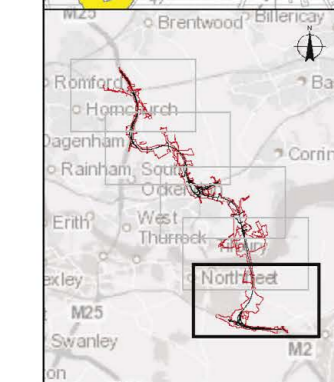
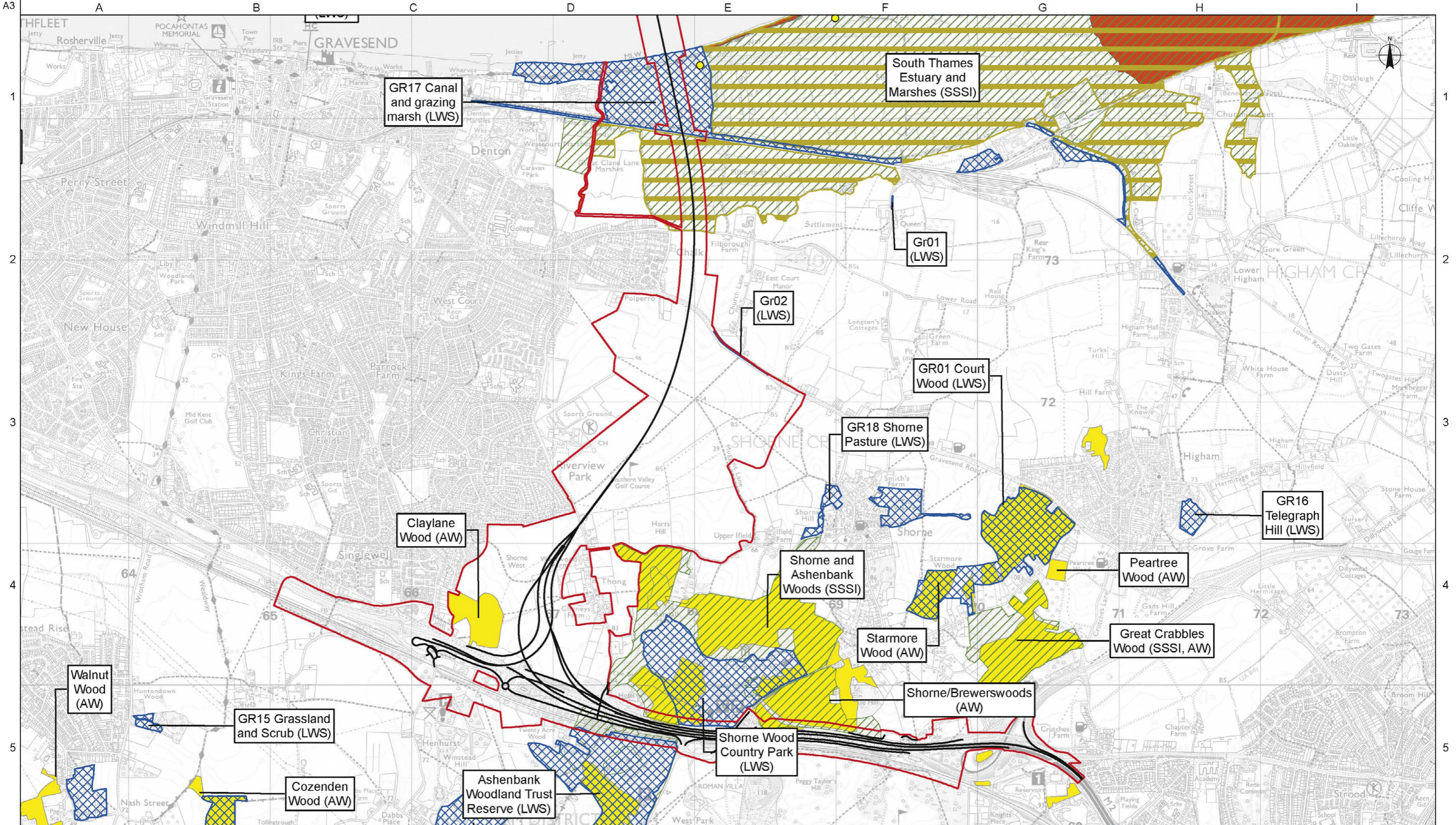


Lower Thames Crossing
**Preliminary Environmental
Information Report**
Figures

List of figures

Figure	Chapter	Title
9.1	Terrestrial Biodiversity	Designated Sites



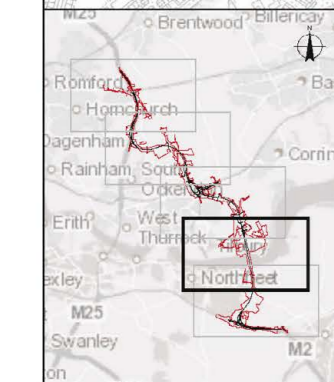
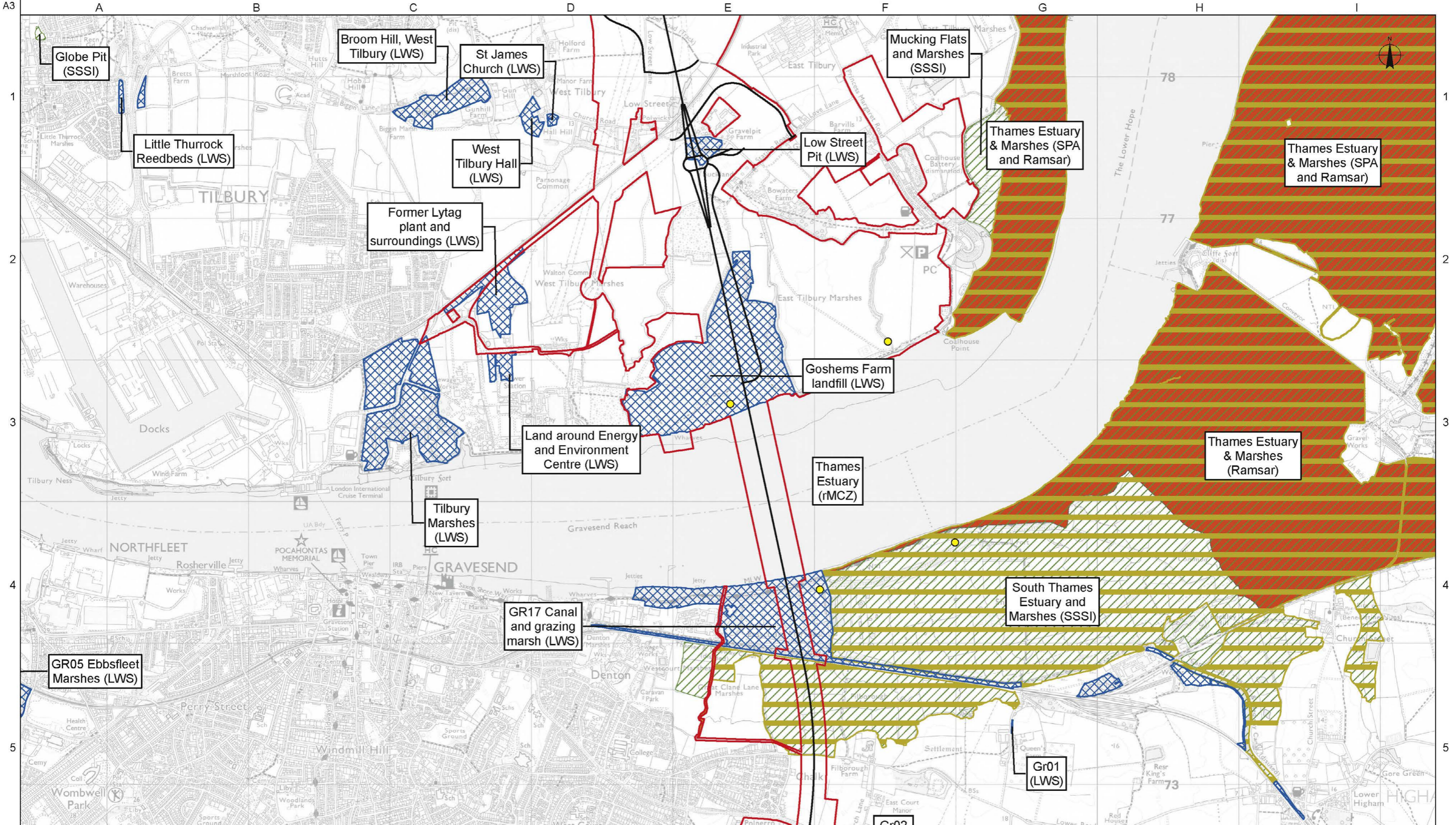
Legend

- LTC Route Alignment
- Development Boundary
- Locations where surveys of birds using intertidal mudflats on the Thames estuary have been conducted from a fixed vantage point
- Ramsar
- Local Wildlife Site (LWS)
- Recommended Marine Conservation Zone (rMCZ)
- Site of Special Scientific Interest (SSSI)
- Ancient Woodland (AW)
- Local Nature Reserve (LNR)
- Special Protection Area (SPA)

Rev	Drawn By	Drawn Date	Checked By	Checked Date	Approved By	Approved Date	Revision Purpose
P01	EP	27/07/2018	ML	17/08/2018	CSS	17/08/2018	For Information

Main Map frame (Kilometres)	
0	2
Locator Map frame (Kilometres)	
0	40

	Client highways england		Scale at A3 Main Map frame: 1:25,000 Locator Map frame: 1:600,000
	Project Title LOWER THAMES CROSSING STATUTORY CONSULTATION		
Drawing Title Figure 9.1 - Designated Sites Sheet 1 of 5		Copyright Contains Ordnance Survey data © Crown copyright 2018 OS 100030649 Contains OS data © Crown Copyright and database right 2018	Suitability For Information
		Status S2	Revision P01
Drawing Number HE540039-CJV-EBD-SZP_EGNE0000000-DR-LE-40005			



Legend

- LTC Route Alignment
- Development Boundary
- Locations where surveys of birds using intertidal mudflats on the Thames estuary have been conducted from a fixed vantage point
- Ramsar
- Local Wildlife Site (LWS)
- Recommended Marine Conservation Zone (rMCZ)
- Site of Special Scientific Interest (SSSI)
- Ancient Woodland (AW)
- Local Nature Reserve (LNR)
- Special Protection Area (SPA)

Rev	Drawn By	Drawn Date	Checked By	Checked Date	Approved By	Approved Date	Revision Purpose
P01	EP	27/07/2018	ML	17/08/2018	CSS	17/08/2018	For Information

Client	Project Title	Drawing Title
highways england	LOWER THAMES CROSSING STATUTORY CONSULTATION	Figure 9.1 - Designated Sites Sheet 2 of 5

Suitability	Status	Revision
For Information	S2	P01

Scale at A3

Main Map frame: 1:25,000

Locator Map frame: 1:600,000

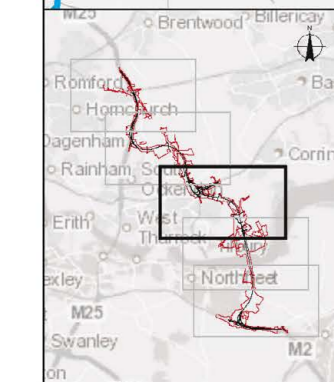
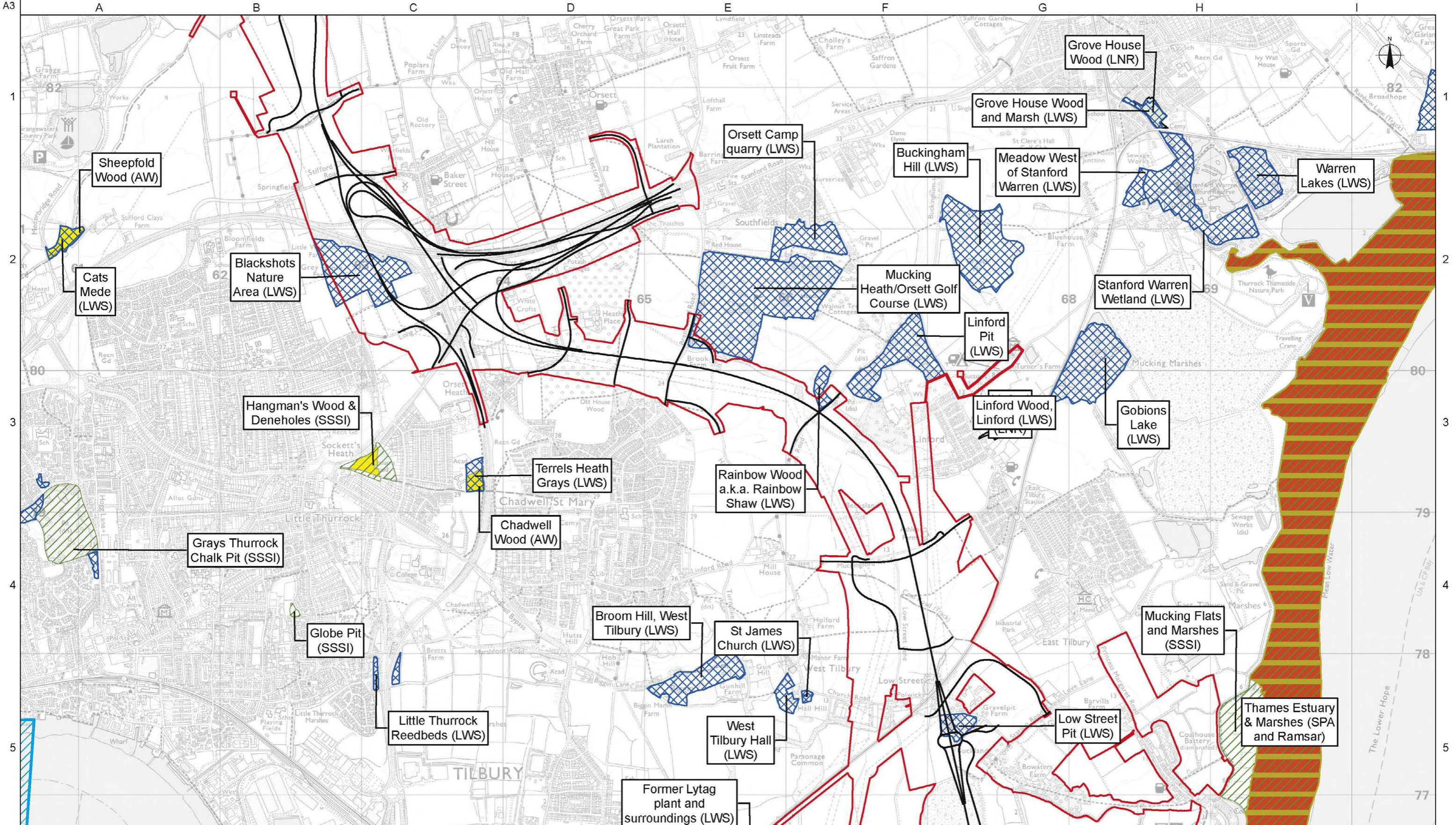
Copyright

Contains Ordnance Survey data © Crown copyright 2018 OS 100030649

Contains OS data © Crown Copyright and database right 2018

Drawing Number

HE540039-CJV-EBD-SZP_EGNE0000000-DR-LE-40005



Legend

- LTC Route Alignment
- Development Boundary
- Locations where surveys of birds using intertidal mudflats on the Thames estuary have been conducted from a fixed vantage point
- Ramsar
- Local Wildlife Site (LWS)
- Recommended Marine Conservation Zone (rMCZ)
- Site of Special Scientific Interest (SSSI)
- Ancient Woodland (AW)
- Local Nature Reserve (LNR)
- Special Protection Area (SPA)

Rev	Drawn By	Drawn Date	Checked By	Checked Date	Approved By	Approved Date	Revision Purpose
P01	EP	27/07/2018	ML	17/08/2018	CSS	17/08/2018	For Information

Main Map frame (Kilometres)	
0	2
Locator Map frame (Kilometres)	
0	40

Client:

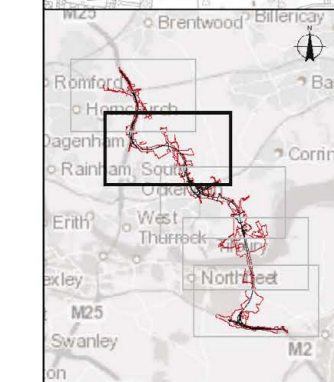
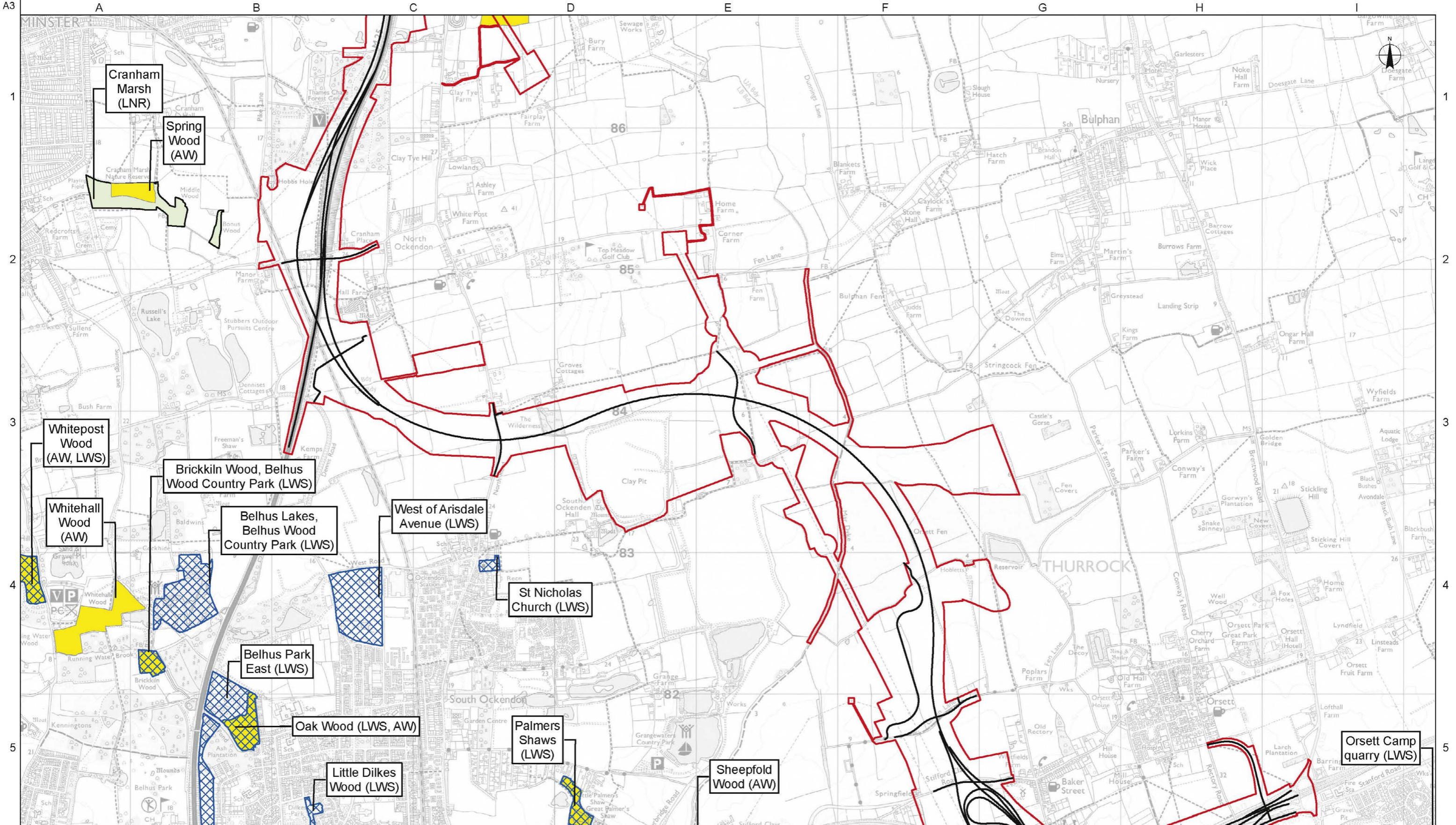
Scale at A3
Main Map frame: 1:25,000
Locator Map frame: 1:600,000

Project Title: **LOWER THAMES CROSSING STATUTORY CONSULTATION**

Copyright: Contains Ordnance Survey data © Crown copyright 2018 OS 100030649. Contains OS data © Crown Copyright and database right 2018.

Drawing Title	Suitability	Status	Revision
Figure 9.1 - Designated Sites Sheet 3 of 5	For Information	S2	P01

Drawing Number: HE540039-CJV-EBD-SZP_EGNE0000000-DR-LE-40005



Legend

- LTC Route Alignment
- Development Boundary
- Locations where surveys of birds using intertidal mudflats on the Thames estuary have been conducted from a fixed vantage point
- Ramsar
- Local Wildlife Site (LWS)
- Recommended Marine Conservation Zone (rMCZ)
- Site of Special Scientific Interest (SSSI)
- Ancient Woodland (AW)
- Local Nature Reserve (LNR)
- Special Protection Area (SPA)

Rev	Drawn By	Drawn Date	Checked By	Checked Date	Approved By	Approved Date	Revision Purpose
P01	EP	27/07/2018	ML	17/08/2018	CSS	17/08/2018	For Information

Main Map frame (Kilometres)

Locator Map frame (Kilometres)

Client **highways england**

Project Title **LOWER THAMES CROSSING STATUTORY CONSULTATION**

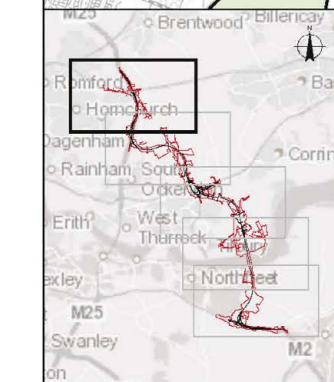
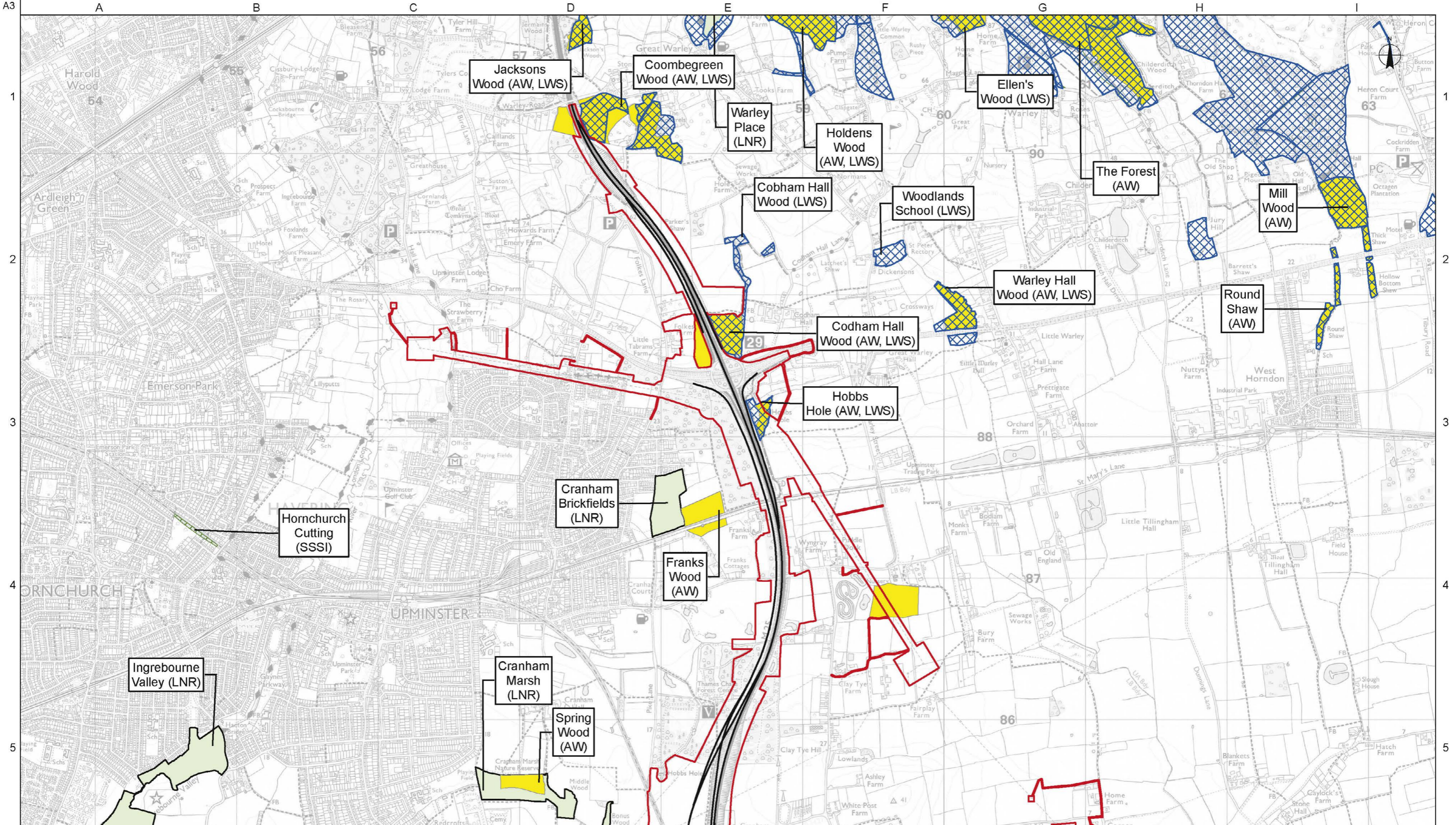
Drawing Title **Figure 9.1 - Designated Sites Sheet 4 of 5**

Scale at A3
Main Map frame **1:25,000**
Locator Map frame: **1:600,000**

Copyright
Contains Ordnance Survey data © Crown copyright 2018 OS 100030649
Contains OS data © Crown Copyright and database right 2018

Suitability	Status	Revision
For Information	S2	P01

Drawing Number
HE540039-CJV-EBD-SZP_EGNE0000000-DR-LE-40005



Legend

- LTC Route Alignment
- Development Boundary
- Ramsar
- Local Wildlife Site (LWS)
- Recommended Marine Conservation Zone (rMCZ)
- Site of Special Scientific Interest (SSSI)
- Ancient Woodland (AW)
- Local Nature Reserve (LNR)
- Special Protection Area (SPA)
- Locations where surveys of birds using intertidal mudflats on the Thames estuary have been conducted from a fixed vantage point

Rev	Drawn By	Drawn Date	Checked By	Checked Date	Approved By	Approved Date	Revision Purpose
P01	EP	27/07/2018	ML	17/08/2018	CSS	17/08/2018	For Information

Main Map frame (Kilometres)

Locator Map frame (Kilometres)

Client				Scale at A3	
				Main Map frame: 1:25,000	
				Locator Map frame: 1:600,000	
Project Title					
LOWER THAMES CROSSING STATUTORY CONSULTATION					
Copyright					
Contains Ordnance Survey data © Crown copyright 2018 OS 100030649					
Contains OS data © Crown Copyright and database right 2018					
Drawing Title		Suitability	Status	Revision	
Figure 9.1 - Designated Sites Sheet 5 of 5		For Information	S2	P01	
Drawing Number					
HE540039-CJV-EBD-SZP_EGNE0000000-DR-LE-40005					