

M60/M62/M66 Simister Island Interchange

Statement of Community Consultation (SoCC)

- 1.1 We operate, maintain and improve England's motorways and major A-roads, the strategic road network. The M60/M62/M66 Simister Island Interchange, previously known as M60 junction 18 Simister Island Interchange is a critical part of our ongoing investment, and will improve journeys between the M60, M62 and M66 which will bring benefits to the local area and the north-west as a whole.
- 1.2 We are publishing this Statement of Community Consultation (SoCC) to outline our approach to consulting with the local community for the above proposed scheme. It provides details about how you (the local community) can take part and how feedback will be used to influence our proposed design.
- 1.3 To make sure we approach our consultation in the very best way for the local community, we've consulted on this document with Bury Council, who are the local authority in the area in which the scheme is proposed to be built and where the proposed scheme may significantly impact.
- 1.4 This document also gives you the background to the proposed scheme and how our application to build it will progress.

2 Our application

- 2.1 The proposed scheme is being developed under the Planning Act 2008 and we are publishing this statement under Section 47 (duty to consult the local community) of that Act.
- 2.2 Under the Planning Act 2008, we are required to make an application to the Secretary of State through the Planning Inspectorate for a Development Consent Order (DCO) to build and operate this proposed scheme. The Planning Inspectorate will examine our application and the Secretary of State will decide on whether the proposed scheme should go ahead based on a recommendation made by the Planning Inspectorate. We anticipate that our DCO application for the proposed scheme will be submitted in winter 2023.
- 2.3 A key consideration for the Planning Inspectorate and the Secretary of State when assessing our DCO application is the National Networks National Policy Statement (NNNPS). The NNNPS sets out the need for development of road projects on the national networks and is the policy against which decisions on major road projects will be made.
- 2.4 When we submit our application, the Planning Inspectorate must consider whether our consultation has been adequate. The best time for you to have your say to inform our final design on this proposed scheme is now by taking part in this consultation.
- 2.5 You can find more information about the Planning Inspectorate and the Planning Act 2008 on their National Infrastructure Planning website:

<http://infrastructure.planninginspectorate.gov.uk> or by calling the Planning Inspectorate on 0303 444 5000.

3 The proposed scheme

- 3.1 In March 2020, the Government's second Road Investment Strategy included a commitment for National Highways to improve Simister Island Interchange which connects the M62, M60 and M66. Simister Island Interchange is one of the busiest motorway junctions in the north-west used by around 90,000 vehicles each day. The junction struggles with high volumes of traffic above what it was designed for, and as a result suffers from congestion and poor journey time reliability.
- 3.2 The proposed scheme will improve junction 18 of the M60 and facilitate smoother flows of traffic along the M60, M62 and M66 in the scheme area, contributing to more reliable and safer journeys into and around Greater Manchester.
- 3.3 As part of the proposed scheme, we will be widening the motorway between M60 junctions 17 and 18 providing 5 lanes in both directions with a hard shoulder. This will reduce delays through the improved junction as well as on the M60.
- 3.4 The main objectives of the proposed scheme are:
- To improve the journey experience for drivers using this section of network by:
 - Reducing peak congestion
 - Reducing journey times
 - Delivering more reliable journey times
 - To provide a scheme which is safe for all road users
 - To minimise the impact of our proposed scheme on the surrounding environment including within Noise Important Areas and Air Quality Management Areas
 - Support future economic growth across the Greater Manchester area by delivering against local aspirations set out in regional and local authorities' transport strategies and local plans
- 3.5 In summary the proposed scheme consists of:
- A new structure providing a free-flow link from the M60 eastbound to M60 southbound (clockwise), including a new bridge over the M66 and junction 18 slip roads
 - Realignment of the interchange slip road from the M66 southbound to accommodate the loop. This includes a new bridge where the loop crosses the slip road, and realignment of the left turn lane to the M62 eastbound

- An upgraded single lane link from the M60 northbound to the M60 westbound (anti-clockwise)
- M66 southbound to be widened to 4 lanes as it passes through junction 18
- Widening of the motorway between M60 junctions 17 and 18, providing 5 lanes in both directions with a hard shoulder
- Renewal of traffic signals, signs and street lighting at junction 18 and its approaches, and new gantries on the M66 southbound

3.6 We have carried out an Environmental Impact Assessment for the proposed scheme. The proposed scheme is an Environmental Impact Assessment development, and therefore we are publishing a Preliminary Environmental Information Report (PEIR) and a Non-Technical Summary (NTS) as part of the consultation materials. This gives information about the likely significant environmental effects of the proposed scheme and the measures we suggest to reduce these. The PEIR has been developed based on assessment work completed to date. The PEIR and the NTS will be available online or to view at the deposit locations listed below.

3.7 Additional information about the proposed scheme, including detailed maps/plans and benefits of the scheme, will be included in our public consultation brochure. Copies of the brochure will be available at local deposit locations detailed in this SoCC during the consultation period and on our scheme webpage: www.nationalhighways.co.uk/M60-Simister-Island

4 Consulting the community and previous consultations

4.1 We have already carried out one round of consultation from June to August 2020 where we consulted on our proposed options for the scheme design, through an options consultation.

- Consultees were asked for their views on the two proposed route options for the scheme with a view of selecting a preferred option. The Northern Loop option was announced as the preferred route option in January 2021.

4.2 More details, including the results of these consultations and how we decided to progress the Northern Loop are included in the Public Consultation Report and the Public Consultation Summary and PRA leaflet, available to download from www.nationalhighways.co.uk/M60-Simister-Island

5 This consultation - why and when

5.1 It is important to us that our consultation will:

- Provide the opportunity to give feedback on and influence our proposals
- Encourage the community to help shape our proposals to maximise local benefits and minimise any impacts

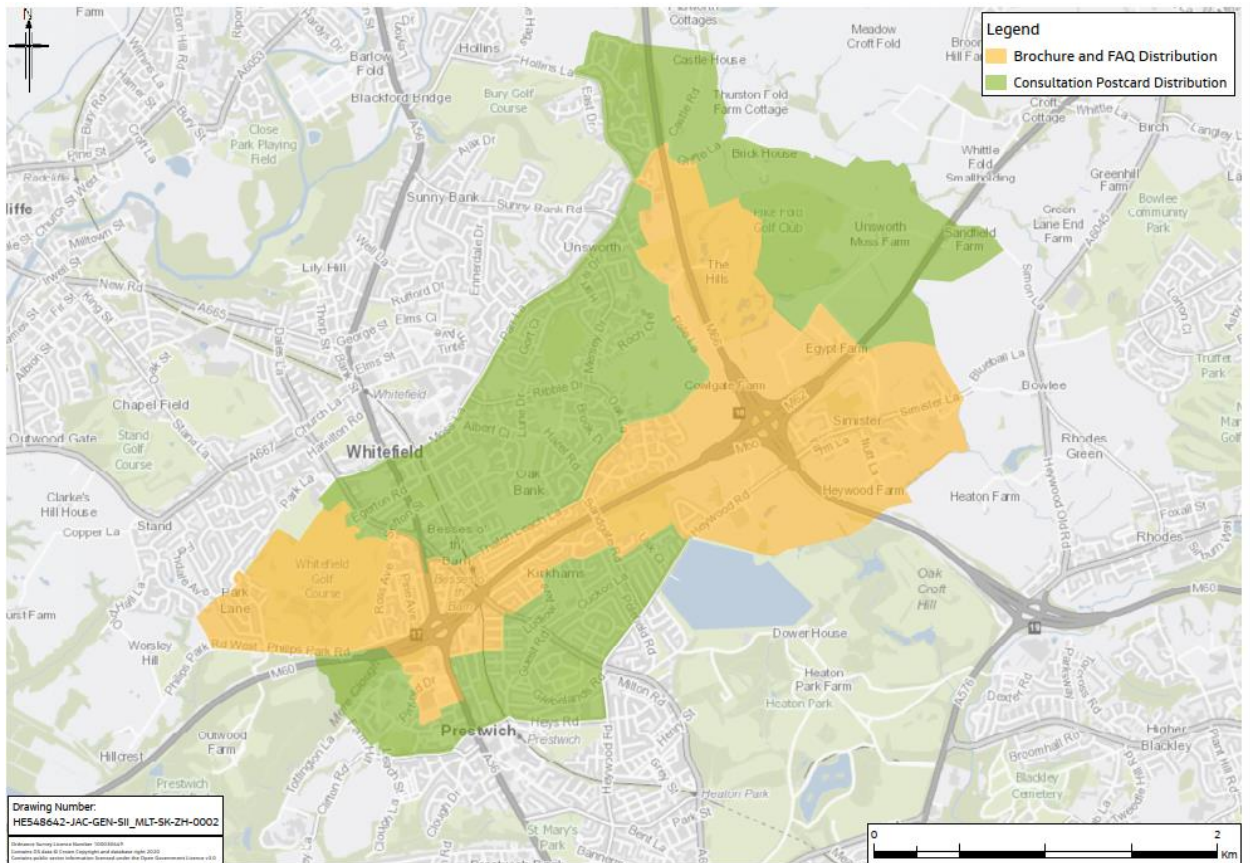
- Help local people understand the potential nature and local impact of our proposals
- Enable potential mitigation measures to be considered and, if appropriate, built into the proposed scheme before an application for a DCO is submitted
- Identify ways in which our proposals, without significant costs, support wider strategic or local objectives

5.2 Your comments will help us achieve these objectives. We will listen to everyone's views, and we'll consider your opinions before we submit our DCO application.

5.3 The consultation will run from Wednesday 15 February until Tuesday 28 March 2023. During the consultation period, we will be consulting on the following elements of the proposed scheme:

- development of the preliminary design since the preferred route announcement
- environmental mitigation measures
- emerging arrangements for the construction stage of the scheme

5.4 Working with Bury Council, we have developed a distribution area for our consultation materials. We'll let people living/working in this area know about our consultation by posting information in advance. Homes and businesses located within the orange boundary will receive consultation brochures and a frequently asked questions (FAQ) document directly in the post, properties located between the green and orange boundary will receive a postcard informing them of the consultation. These boundaries have been created based on who we think will be affected by our proposals, those most affected receiving a brochure and FAQ's document.



6 Who can take part?

6.1 Anyone who is interested in this proposed scheme is welcome to take part. We welcome all views and will take them into account before we submit our final design.

7 How will we consult?

7.1 We will use the following methods to promote our public consultation

Method	Detail
Consultation brochure	<p>The consultation brochure will contain details of the scheme, including any proposed environmental mitigation measures and updates to the scheme design. It will also include instructions for joining our telephone events, as well as a separate frequently asked questions document. We will deliver this to those living within the orange distribution boundary.</p> <p>Copies of both documents will also be available to view at local deposit locations. The suite of documents will include a Preliminary Environmental Information Report and a Non-Technical Summary which will set out environmental impacts and possible mitigation measures – all of which we'd like your views on.</p> <p>The consultation documents will be available in alternative formats, including large text format upon request.</p> <p>We can supply individual paper copies of the consultation brochure and response form free of charge. An electronic copy of the consultation documents can be supplied free of charge on a USB memory stick. A paper copy of the consultation documents can also be supplied, but there will be a reasonable charge to cover the cost of printing and postage, up to a charge of £500. Please contact National Highways using the contact details at the end of this notice to make a request.</p>
Scheme webpage	<p>A full summary of the scheme, this SoCC, the consultation brochure, online response form, Preliminary Environmental Information Report and non-technical summary and plan showing the extent of the scheme (red line boundary) will be available at: www.nationalhighways.co.uk/M60-Simister-Island</p> <p>The following additional information will also be provided:</p>

Method	Detail
	<ul style="list-style-type: none"> • A flythrough video of the proposed scheme • Regularly updated frequently asked questions and answers • An animated video explaining the consultation and scheme in more detail • Previous consultation report
Telephone consultation events	<p>The project team will be available to answer questions at the following times through telephone consultation events:</p> <ul style="list-style-type: none"> • Saturday 4 March 2023, 11am to 4pm • Tuesday 7 March 2023, 11am to 7pm • Thursday 23 March 2023, 11am to 7pm <p>The details of these events and telephone number to call will be made available on the scheme webpage and in the brochure.</p>
Public online webinars	<p>We will be hosting a series of online webinars, delivering a presentation on our proposals and holding a live question and answer session.</p> <p>The webinars will be held:</p> <ul style="list-style-type: none"> • Thursday 23 February 2023, 1pm to 3pm • Wednesday 15 March 2023, 5pm to 7pm <p>You can access the webinars by visiting the scheme's webpage and clicking on the link.</p>
Consultation events	<p>We plan to hold three consultation events. Here you can find out more about the proposed scheme and speak to members of the project team who will be happy to answer any questions you may have.</p> <ul style="list-style-type: none"> • Parrenthorn High School, Tuesday 21

Method	Detail
	<p>February 2023, 11am to 7pm Heywood Road, Prestwich, Manchester, M25 2BW</p> <ul style="list-style-type: none"> • Our Lady of Grace Hall, Saturday 11 March 2023, 10am to 4pm, 11 Fairfax Road, Prestwich, Manchester, M25 1AS • Unsworth Cricket Club, Monday 20 March 2023, 12pm to 8pm, The Pavilion, 32 Pole Lane, Bury, BL9 8QL
Council and community / area forum briefings	Where possible we'll speak when invited to local council forums and community / area forums affected or in the vicinity of our scheme.
Stakeholder briefings	Where possible we will attend when invited, meetings of local community groups affected by the proposal.
Statutory notices	<p>Statutory notices to publicise the proposed DCO application and the SoCC will be issued in the following newspapers:</p> <ul style="list-style-type: none"> • Proposed DCO application - once in the Times and London Gazette and twice in local circulating newspapers including: <ul style="list-style-type: none"> ○ The Bury Times ○ Jewish Telegraph • Publicising the SoCC - once in local circulating newspapers including: <ul style="list-style-type: none"> ○ The Bury Times ○ Jewish Telegraph
Press releases	Press releases detailing the consultation period and how the community and road users can get involved will be issued.
Social media	The public consultation will be advertised on Twitter @HighwaysNWest and publicised on National Highways Facebook page National Highways: North-West. Paid for social media adverts will be placed.

7.2 Any activity(s) that cannot be undertaken due to circumstances beyond our control (such as severe weather conditions) where possible, will be substituted with similar activity(s) and advertised on the scheme's webpage or you can contact us directly by calling 0300 123 5000.

How to respond to the consultation:

7.3 A consultation response form will be produced to help you provide comments on the proposed scheme design. All consultation responses must be made by:

- Completing the online response form at www.nationalhighways.co.uk/M60-Simister-Island
- Picking up a hardcopy at one of our deposit locations which can be posted via the freepost address or
- Alternatively, you can:
 - Email: M60J18SimisterIslandInterchange@nationalhighways.co.uk or
 - write to us: Freepost M60 J18 SIMISTER ISLAND

7.4 All responses must be received by **11:59pm on Tuesday 28 March 2023**. Responses received after this date may not be considered.

8 Information available at and details of local deposit locations:

8.1 The below list will be made available for your information to help inform your consultation response:

- Public consultation brochure and response form
- Scheme/route map showing the outer limits of the land required, both permanently and temporarily by the scheme during its construction and operation. (known as provisional order limits)
- Preliminary Environmental Information Report & Non-Technical Summary
- Section 48 Notice
- Statement of Community Consultation (SoCC)
- Previous public consultation reports and/or public consultation summary documents
- Development Consent Order leaflet

8.2 The deposit points below are open at the time of publishing this document, however, these may change or may be added to due to closure. If deposit locations are not accessible, you can still view all our materials on our project webpage at www.nationalhighways.co.uk/M60-Simister-Island

8.3 We can supply individual paper copies of the consultation brochure and response form free of charge. An electronic copy of the consultation documents can be supplied free of charge on a USB memory stick. A paper copy of the consultation documents can also be supplied, but there will be a reasonable charge to cover the cost of printing and postage up to a charge of £500. Please contact National Highways using the contact details below to make a request.

8.4 You can request copies of our materials by emailing us or calling 0300 123 5000.

Deposit Location	Opening times
Bury Town Hall, Knowsley Street, Bury, BL9 0SW (Public consultation and response form only)	Monday to Friday 8:45am-5pm Saturday and Sunday Closed
Bury Library, Manchester Road, Bury, BL9 0DG	Monday Closed Tuesday 10am-4:30pm Wednesday 10am-4:30pm Thursday 12:30pm-7pm Friday 10am-4:30pm Saturday 9:30am-1pm Sunday Closed
Prestwich Library, Longfield Centre, Prestwich, Manchester, M25 1AY	Monday Closed Tuesday 10am-4:30pm Wednesday 10am-4:30pm Thursday 12:30pm-7pm Friday 10am-4:30pm Saturday Closed Sunday 9:30am-1pm
Radcliffe Library, Stand Lane, Radcliffe, Manchester, M26 1WR	Monday Closed Tuesday 10am-4:30pm Wednesday 10am-4:30pm Thursday 12:30pm-7pm Friday 10am-4:30pm Saturday 9:30am-1pm Sunday Closed
Radcliffe Leisure Centre, Spring Lane, Radcliffe, M26 2SZ	Monday to Friday 6:30am-10pm Saturday 8am-6pm

(Public consultation and response form only)	Sunday	8am-4pm
Berry's of Unsworth, 73 Parr Lane, Bury BL9 8JR (Public consultation and response form only)	Monday to Friday	8am-4pm
	Saturday	8am-2pm
	Sunday	Closed

9 Next steps

- 9.1 We will record and carefully consider all responses received during the consultation which will be taken into account in finalising our DCO application before we submit it to the Planning Inspectorate.
- 9.2 We'll summarise our findings in the DCO Consultation Report which forms part of our application to the Planning Inspectorate.
- 9.3 The Planning Inspectorate will decide whether the application meets the required standards to proceed to examination and will determine whether our consultation has been adequate.
- 9.4 For more information visit our scheme webpage where you can also sign up for email alerts whenever the webpage is updated. If you have any queries about this scheme, please contact the project team directly by calling 0300 123 5000 or emailing M60J18SimisterIslandInterchange@nationalhighways.co.uk

Your data, your rights

- 9.5 On 25 May 2018, the General Data Protection Regulations (GDPR) became law. The law requires National Highways to explain to you – consultees, stakeholders and customers – how your personal data will be used and stored. National Highways adheres to the government's consultation principles, the Planning Act 2008 as required, and may collect personal data to help shape development of highways schemes. Personal data collected by the project team will be processed and retained by National Highways and its appointed

contractors until the scheme is complete. Under the GDPR regulations you have the following rights:

- Right of access to the data (Subject Access Request)
- Right for the rectification of errors
- Right to erasure of personal data – this is not an absolute right under the legislation
- Right to restrict processing or to object to processing
- Right to data portability

9.6 If, at any point, National Highways plans to process the personal data we hold for a purpose other than that for which it was originally collected, we will tell you what that other purpose is. We will do this prior to any further processing taking place and we will include any relevant additional information, including your right to object to that further processing.

9.7 You have the right to lodge a complaint with the supervisory authority, the Information Commissioners Office.

9.8 If you'd like more information about how we manage data, or a copy of our privacy notice, please contact: DataProtectionAdvice@nationalhighways.co.uk.

If you need help accessing this or any other National Highways information, please call **0300 123 5000** and we will help you.

© Crown copyright 2023.

You may re-use this information (not including logos) free of charge in any format or medium, under the terms of the Open Government Licence. To view this licence:

visit www.nationalarchives.gov.uk/doc/open-government-licence/

write to the **Information Policy Team, The National Archives, Kew, London TW9 4DU**, or email psi@nationalarchives.gsi.gov.uk.

Mapping (where present): © Crown copyright and database rights 2023 OS 100030649. You are permitted to use this data solely to enable you to respond to, or interact with, the organisation that provided you with the data. You are not permitted to copy, sub-licence, distribute or sell any of this data to third parties in any form.

This document is also available on our website at www.nationalhighways.co.uk

For an accessible version of this publication please call **0300 123 5000** and we will help you.

If you have any enquiries about this publication email info@nationalhighways.co.uk or call **0300 123 5000***. Please quote the National Highways publications code **PR247/22**.

National Highways creative job number CRE22_0236

*Calls to 03 numbers cost no more than a national rate call to an 01 or 02 number and must count towards any inclusive minutes in the same way as 01 and 02 calls.

These rules apply to calls from any type of line including mobile, BT, other fixed line or payphone. Calls may be recorded or monitored.

Printed on paper from well-managed forests and other controlled sources when issued directly by National Highways.

Registered office Bridge House, 1 Walnut Tree Close, Guildford GU1 4LZ

National Highways Limited registered in England and Wales number 09346363