



# M3

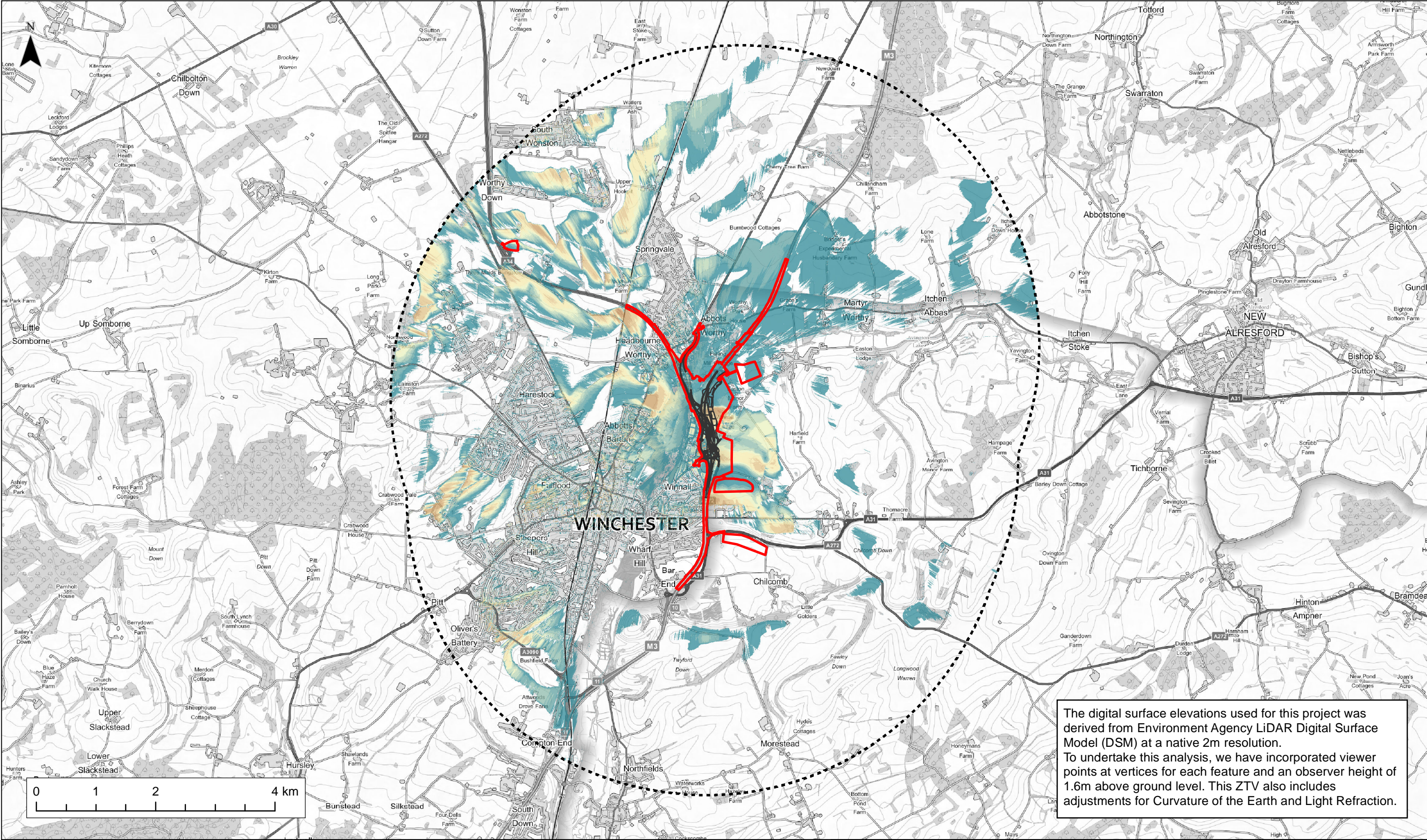
## **junction 9 improvement scheme**

### **Preliminary Environmental Information Report**

Appendix 7.1 – Landscape and Visual Figures (Part 3 of 3)

May 2021





The digital surface elevations used for this project was derived from Environment Agency LiDAR Digital Surface Model (DSM) at a native 2m resolution. To undertake this analysis, we have incorporated viewer points at vertices for each feature and an observer height of 1.6m above ground level. This ZTV also includes adjustments for Curvature of the Earth and Light Refraction.

<div><div>KEY</div><div><div><div></div><div>Indicative Application Boundary</div></div><div><div></div><div>Highway Alignment</div></div><div><div></div><div>5km Radius from Highway Alignment</div></div></div><div><div>Percentage of Development Visible (subject to ground truthing) - With Traffic, Based on 4.5m Vehicle Height</div><div><div><div></div><div>90% - 100%</div></div><div><div></div><div>80% - 90%</div></div><div><div></div><div>70% - 80%</div></div><div><div></div><div>60% - 70%</div></div><div><div></div><div>50% - 60%</div></div><div><div></div><div>40% - 50%</div></div><div><div></div><div>30% - 40%</div></div><div><div></div><div>20% - 30%</div></div><div><div></div><div>10% - 20%</div></div><div><div></div><div>1% - 10%</div></div></div></div></div>		<div><div>Figure Status</div><div>FOR INFORMATION</div></div> <div><div><div><div></div><div>VolkerFitzpatrick</div></div></div></div> <div><div><div>Client</div><div><div><div></div><div>highways england</div></div></div></div></div>	<div><div>Project Title</div><div>M3 JUNCTION 9 IMPROVEMENT</div></div> <div><div><div>Figure Title</div><div>ZONE OF THEORETICAL VISIBILITY (ZTV) PERCENTAGE VISIBLE - WITH TRAFFIC</div></div></div> <div><div><div><div>Scale: 1:30,000</div><div>Designed:</div><div>Drawn: JP</div><div>Checked: DM</div><div>Approved:</div></div><div><div>Original Size: A3</div><div>Date</div><div>Date: 14/09/2020</div><div>Date: 14/09/2020</div><div>Date</div></div></div><div><div><div>FIGURE 7.8</div><div><div>Project Ref No. 48176</div><div>Revision</div></div></div></div></div>
--	--	--	--