

Welcome to our virtual exhibition, where you can find out about the M3 junction 9 improvement scheme and how to respond to this consultation. You can comment on our proposals between Thursday 27 May 2021 and Thursday 8 July 2021.

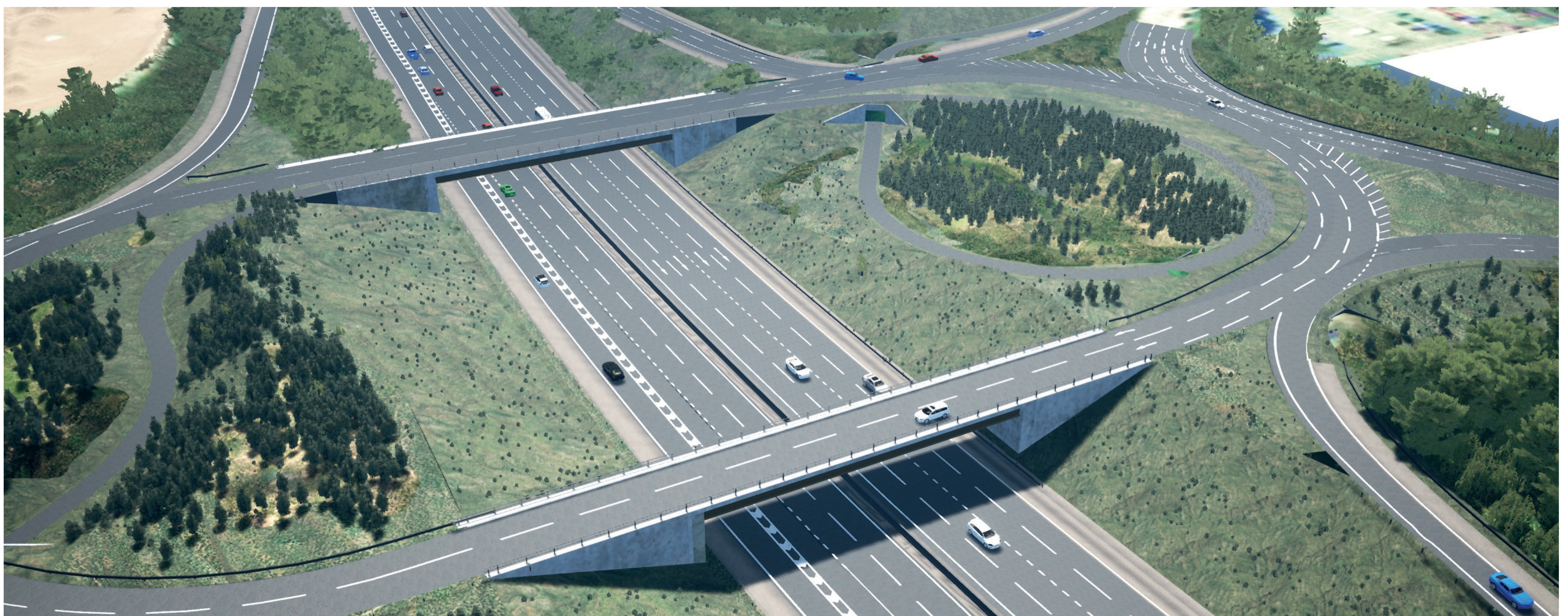
We are altering junction 9 of the M3, a key motorway junction which connects south Hampshire and the wider area, so it's less congested, safer and better to drive through. We've made several changes to our design since our consultation in 2019.

**You can comment on anything you see or read about in our consultation, but we're particularly keen to hear your thoughts on:**

- New areas for environmental works and to place spare excavated material
- New areas for temporary construction compounds
- New highways and roundabout design to introduce better traffic flow between the M3 and A34
- A new footbridge over the River Itchen
- Extra space to build the Proposed Scheme in a safe, efficient and sensitive manner while keeping vehicles running through the junction
- Revised walking and cycling routes

#### Inside you can:

- Find out about our Proposed Scheme
- Understand what changes we have made recently
- Read more detailed documents
- Provide a response, or find out how to respond in your own time
- Find out how you can book a telephone appointment or join our online webinars



## Get involved

### Online webinars

We're hosting seven online webinars covering different topics and specialist areas. These are to help you understand our proposals and how the Proposed Scheme may affect you.

At the online webinars we will give a short presentation and then take questions from attendees.

Don't worry if you can't attend, all webinars will be recorded and published online after each event on the Proposed Scheme webpage. The titles and dates of the webinars are on our website.

### Telephone surgery

We're offering a telephone surgery service where you can book to speak to one of our team about any aspect of our Proposed Scheme.

### Register or make a booking

To register for either the webinar or telephone surgery please contact us by email or phone:

- Email: **[M3Junction9Improvements@highwaysengland.co.uk](mailto:M3Junction9Improvements@highwaysengland.co.uk)**
- Phone: **0300 123 5000**

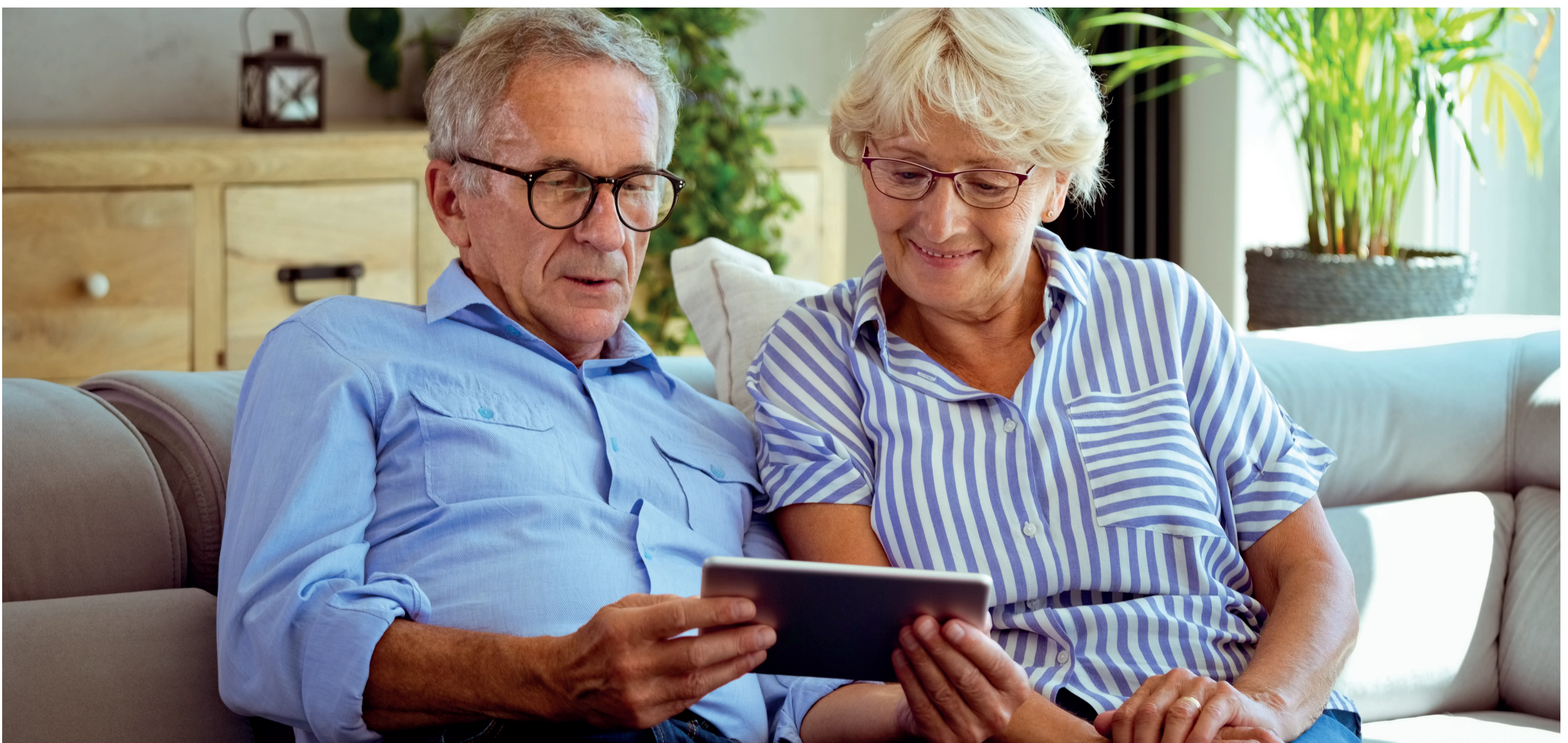
You can also let us know any questions you have in advance of a webinar.

### Website

Please visit:

- **[www.highwaysengland.co.uk/m3junction9](http://www.highwaysengland.co.uk/m3junction9)**

to stay up to date on the scheme.



## About our proposals

### The Proposed Scheme

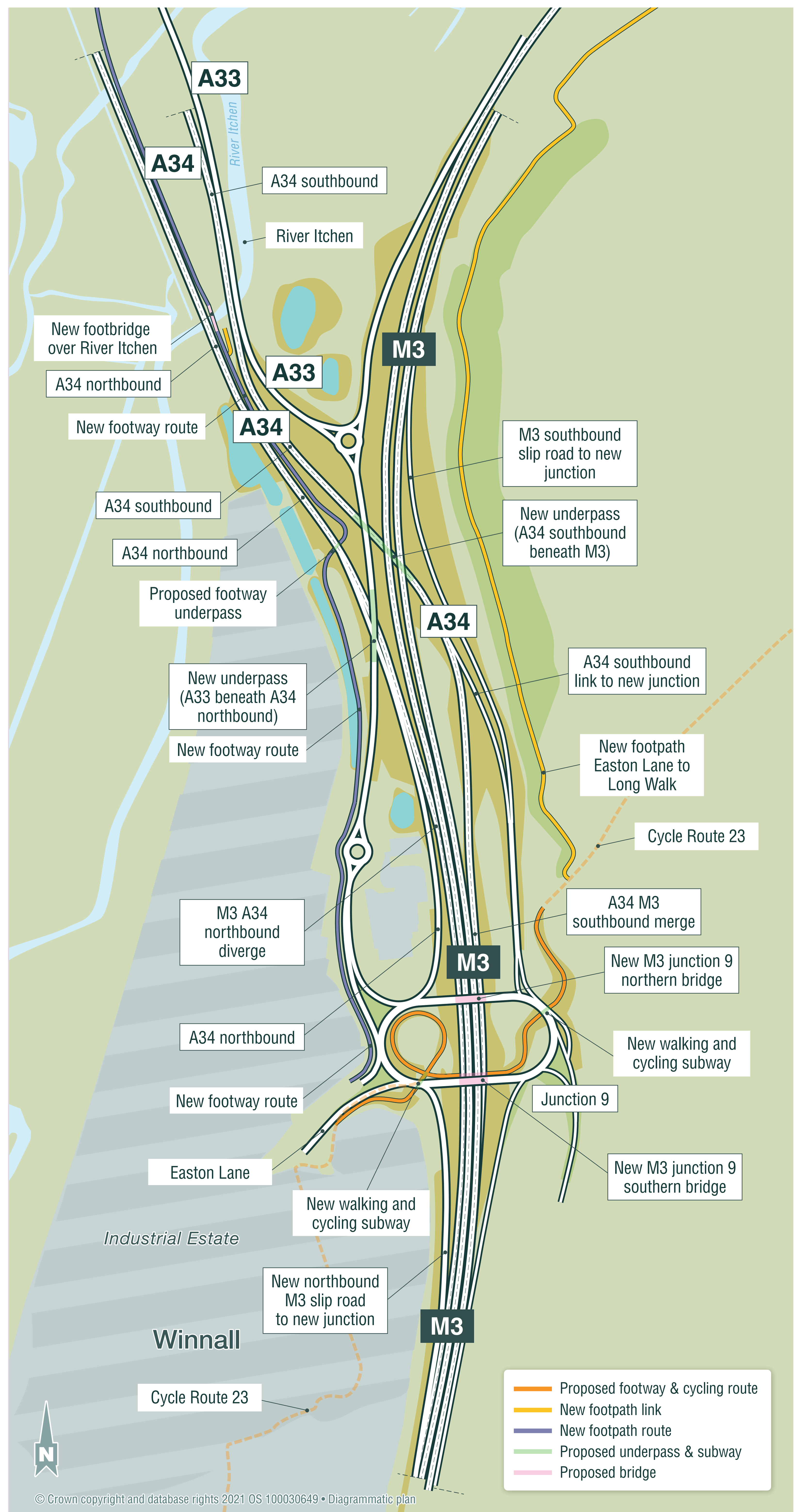
We plan to widen the M3 locally to the junction, which will include:

- Creating four traffic lanes in each direction of the M3
- Providing same direction free-flow link between M3/A34
- Rearranging the main junction 9 roundabout
- Building three new bridges and a number of other structures including new underpasses
- Revising walking and cycling routes
- Improving the motorway slip-roads

### Why are we making these changes?

We want to:

- **Reduce congestion** and increase how reliable people's journey times are.
- **Improve safety** by reducing delays and making traffic queues shorter.
- **Improve the environment** where possible, by reducing the number of households affected by noise, improving air quality and achieving the best we can for the diversity of local plants and animals.
- **Improve access** for walkers and cyclists connecting the National Cycle Route 23 east to west across the junction and providing additional footpaths linking Kings Worthy to the west of the junction.
- **Support economic growth** by making capacity for more jobs, business and housing.



Tell us your thoughts on these key aspects

### Our plans for walkers, cyclists and other users

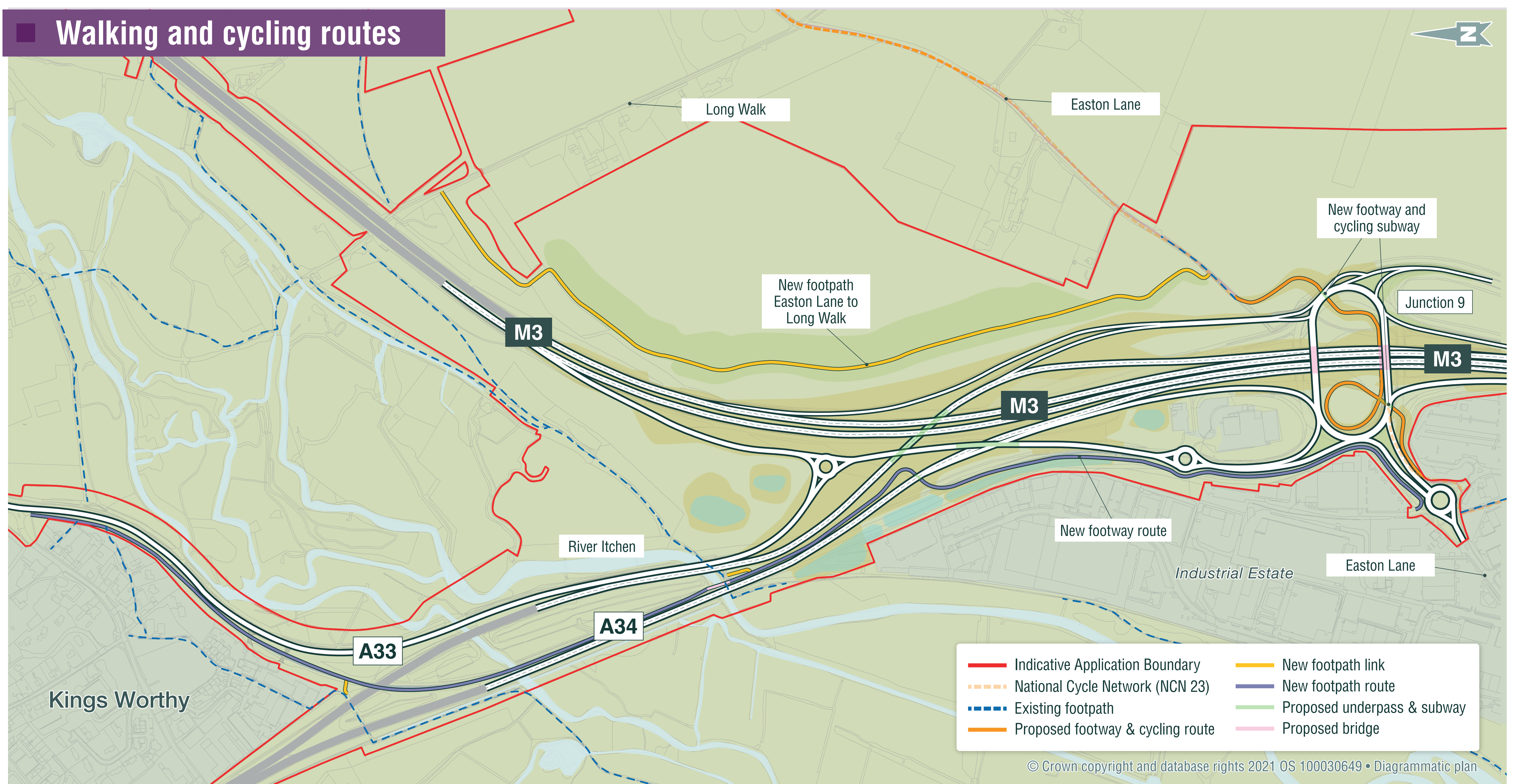
We're planning new larger underpasses; connecting the National Cycle Route 23 east to west across the junction; a new walking route for the western side of the new junction to link the A33/B3047 junction to Winnall trading estate situated on Easton Lane; and an additional public footpath on the eastern side of the new junction to link Easton Lane with Long Walk.

We'd like to hear your thoughts about the location of our proposed new or altered routes for people who are not travelling through the area by vehicle.

### Our plans for how we intend to deal with spare soil from our works

We know that overall we will dig out more material than we will use to create the new embankments and roads. We're looking to put this material near to the junction so that we do not have to use lots of lorry movements to take it further away. We've been looking at the best location to place our spare material from our works. We've chosen three possible locations that we're looking at in more detail.

We will make a final decision on how many of these areas we need once we've considered your comments and completed our junction design. You can see one example of how they might look in our 3D flythrough video of the Proposed Scheme in this exhibition.



Tell us your thoughts on these key aspects

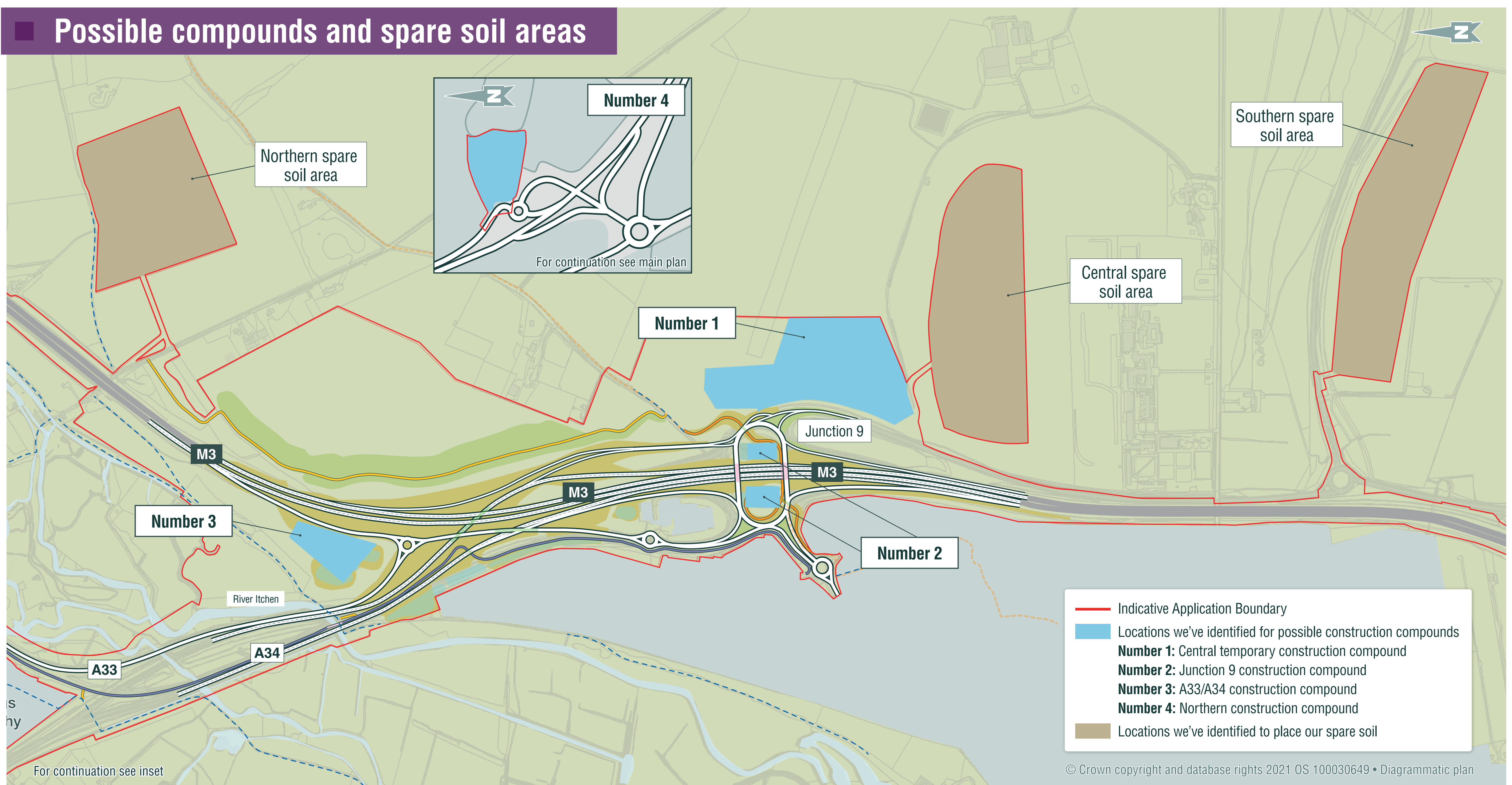
### Our plans for possible construction compounds

As part of our design, we've identified four possible areas for construction compounds:

- **Number 1:** A central temporary construction compound, located just east of the junction
- **Number 2:** Two smaller areas within the footprint of the old junction 9 roundabout
- **Number 3:** A compound located between the A33/A34 and M3
- **Number 4:** The more distant northern compound located adjacent to the A34/A272 roundabout near Christmas Hill (this was the previous compound identified in the 2019 consultation)

The final number and size of these compounds is not yet known and therefore your comments on all of the above are important to us as we progress our design work and choose our final location(s).

### Possible compounds and spare soil areas



## Our effect on the environment

Our proposals may have some impacts on the surrounding area. We're undertaking a thorough 'Environmental Impact Assessment' of the Proposed Scheme which includes carrying out local surveys. This allows us to understand the potential effects of our proposals and find ways to reduce impacts, where possible. We're assessing:

- Air quality
- Archaeology and historic features – we call this 'Cultural heritage'
- Landscape and visual
- Plants and animals – we call this 'Biodiversity'
- Geology and soils
- Our use of materials and how we deal with waste – we call this 'Material assets and waste'
- Noise and vibration
- Population and health
- Road drainage and the water environment

- Climate
- Inter-project cumulative effects – this means understanding the effects from the Proposed Scheme with other proposed development
- Intra-project cumulative effects – this means understanding if, when combined, individual effects from the Proposed Scheme could result in a different or greater effect on the people or other things that might be affected

Our surveys and assessment are still ongoing, so our final findings will be reported in an 'Environmental Statement', which we'll submit with our Development Consent Order application.

With this consultation we've published a Preliminary Environmental Information Report ('PEIR') which talks about all the topics above in detail. A Non-Technical Summary of our PEIR is also available. To view the PEIR and the Non-Technical Summary go back to the exhibition room and head to the consultation materials table or have a look at our website.



## Our effect on the environment

### Construction work

We're thinking carefully about how we build our Proposed Scheme and how we manage issues such as noise, dust and congestion on local roads whilst we do our works.

Our site activities include:

- Demolishing existing structures
- Digging and moving earth
- Laying cables and drains
- Building and marking the motorway
- Putting up fencing, safety barriers and signs
- Building or altering structures such as bridges, culverts, watercourses and walls
- Building or altering routes for walkers, cyclists and other users

There'll be temporary access tracks and roads into and out of our works and our compound(s) to move staff, materials and equipment around the areas in which we are working.

We would like to know your thoughts on any of the issues that you might be concerned about in relation to the type of construction work we're proposing.



## Our effect on the environment

### After construction

We will aim to minimise the effect of the Proposed Scheme on the surrounding areas including the South Downs National Park, and on the animal and plant species that live and grow nearby.

We've prepared some designs for our landscaping and for areas where we would like to create new areas for plants and animals that might be affected by the Proposed Scheme. This is known as our '*Preliminary Environmental Mitigation Design Plan*'.

You can see this plan by heading to the consultation materials table in this venue. Tell us what you think of them or how they might be improved.





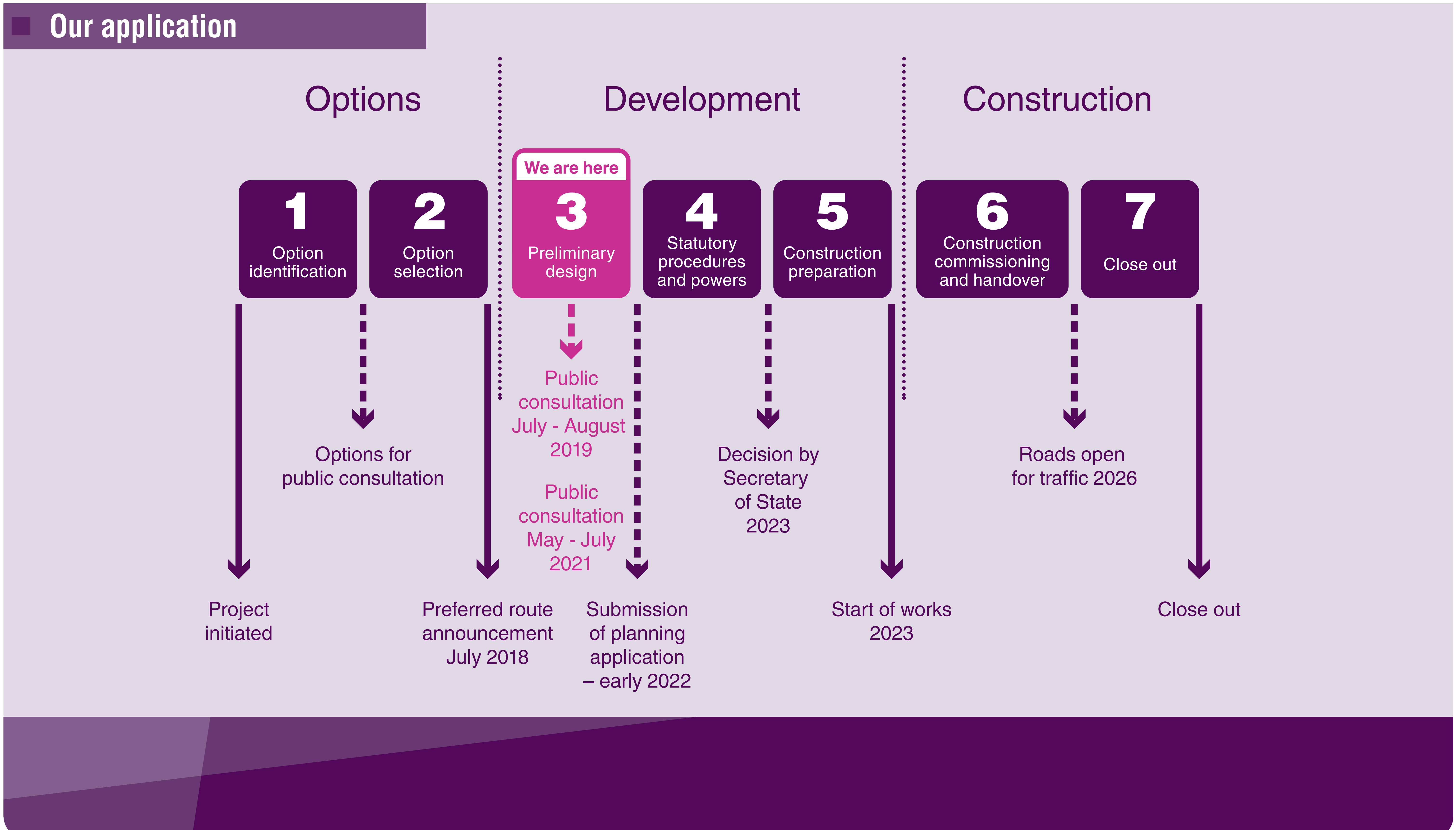
### The application process and next steps

Large road and junction schemes like ours do not follow the same system as smaller planning applications. They are classed as ‘Nationally Significant Infrastructure Projects’ and follow a process set out in the Planning Act 2008, under which we hope to get a ‘Development Consent Order’. This means that we have to submit our application to government via the Planning Inspectorate.

To find out more about the planning process, visit the [Planning Inspectorate’s website](#) or join our webinar *Introduction to the M3 Junction 9 Improvement Scheme and next steps*.

### Help us develop our proposals

All comments made during this consultation will be considered as we develop our final plans for the Proposed Scheme before we submit our application to the Planning Inspectorate in early 2022.



## Have your say

We're seeking your views on our Proposed Scheme.

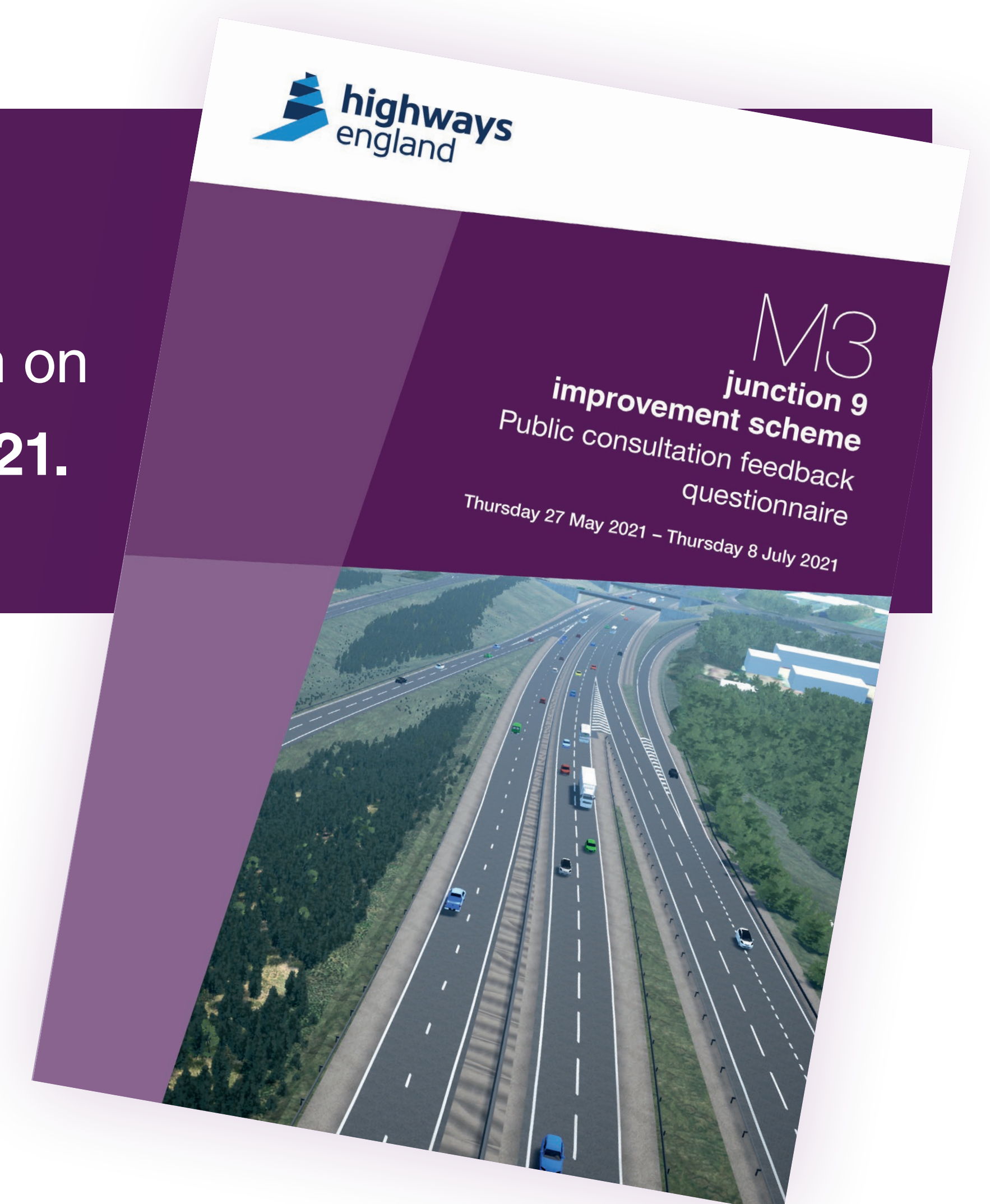
Your feedback will help shape our proposals before we submit our application.

There are three ways you can tell us what you think:

- **Online:** complete the questionnaire online at: [www.highwaysengland.co.uk/m3junction9](http://www.highwaysengland.co.uk/m3junction9) or in this virtual exhibition.
- **Email:** email your comments or completed questionnaire to: [M3Junction9Improvements@highwaysengland.co.uk](mailto:M3Junction9Improvements@highwaysengland.co.uk)
- **Post:** send your comments or completed questionnaire to us at: **Freepost M3 JUNCTION 9**

You can request a paper copy of the questionnaire by calling: **0300 123 5000** or by emailing: [M3Junction9Improvements@highwaysengland.co.uk](mailto:M3Junction9Improvements@highwaysengland.co.uk)

Responses must be received by **11.59pm on Thursday 8 July 2021.**



## Your data. Your rights.

On 25 May 2018, the General Data Protection Regulations (GDPR) became law. The law requires Highways England to explain to you – consultees, stakeholders and customers – how your personal data will be used and stored.

Highways England adheres to the government's consultation principles, the Planning Act 2008 and the Highways Act 1980 as required, and may collect personal data to help shape development of highways schemes.

Personal data collected by the project team will be processed and retained by Highways England and its appointed contractors until the scheme is complete. In some instances consultation responses may also be sent to the Planning Inspectorate.

Under the GDPR regulations you have the following rights:

- Right of access to the data (Subject Access Request)
- Right for the rectification of errors
- Right to erasure of personal data – this is not an absolute right under the legislation
- Right to restrict processing or to object to processing
- Right to data portability

If, at any point, Highways England plans to process the personal data we hold for a purpose other than that for which it was originally collected, we will tell you what that other purpose is. We will do this prior to any further processing taking place and we will include any relevant additional information, including your right to object to that further processing.

**You have the right to lodge a complaint with the supervisory authority, the Information Commissioners Office.**

If you'd like more information about how we manage data, or a copy of our privacy notice, please contact: [DataProtectionAdvice@highwaysengland.co.uk](mailto:DataProtectionAdvice@highwaysengland.co.uk)