

# M3 junction 9 improvements

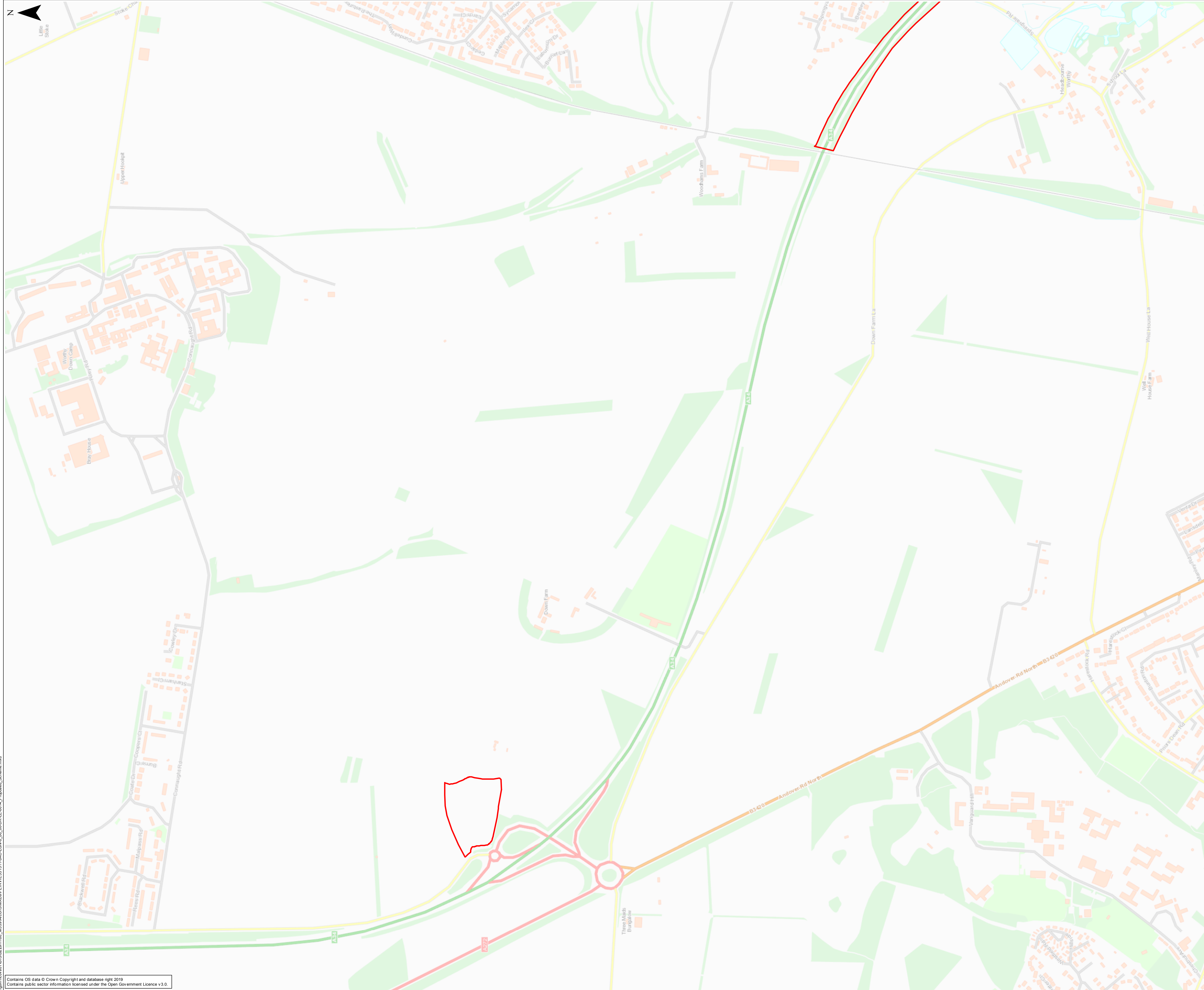
Preliminary Environmental  
Information Report  
Volume 2: Appendix A (Part 1)



## Appendix A. Figures

Drawing Reference Number	Revision	Title
HE551511-JAC-EGN-0_00_00-DR-LE-0014	P02	Figure 1-1 Proposed Scheme
HE551511-JAC-EGN-0_00_00-DR-LE-0009	P02	Figure 1-2 Environmental Constraints
HE551511-JAC-EGN-0_00_00-DR-LE-0006	P02	Figure 5-1-1 Air Quality Constraints
HE551511-JAC-EGN-0_00_00-DR-LE-0001	P02	Figure 5-2-1 Historic Landscape Types
HE551511-JAC-EGN-0_00_00-DR-LE-0002	P03	Figure 5-2-2 Designated Cultural Heritage Assets
HE551511-JAC-EGN-0_00_00-DR-LE-0003	P03	Figure 5-2-3 Undesignated Cultural Heritage Assets
HE551511-JAC-EGN-0_00_00-DR-LE-0010	P02	Figure 5-3-1 Landscape and Visual Representative Viewpoints
HE551511-JAC-EGN-0_00_00-DR-LE-0007	P02	Figure 5-4-1 Statutory Sites for Nature Conservation
HE551511-JAC-EGN-0_00_00-DR-LE-0008	P02	Figure 5-8-1 Population and Health Context
HE551511-JAC-EGN-0_00_00-DR-LE-0013	P02	Figure 5-8-2 General Deprivation by LSOA relative to distribution across England
HE551511-JAC-EGN-0_00_00-DR-LE-0011	P02	Figure 5-9-1 Water Features
HE551511-JAC-EGN-0_00_00-DR-LE-0012	P02	Figure 5-9-2 Water Constraints
HE551511-JAC-EGN-0_00_00-DR-LE-0005	P02	Figure 5-9-3 Surface Water Flood Extents

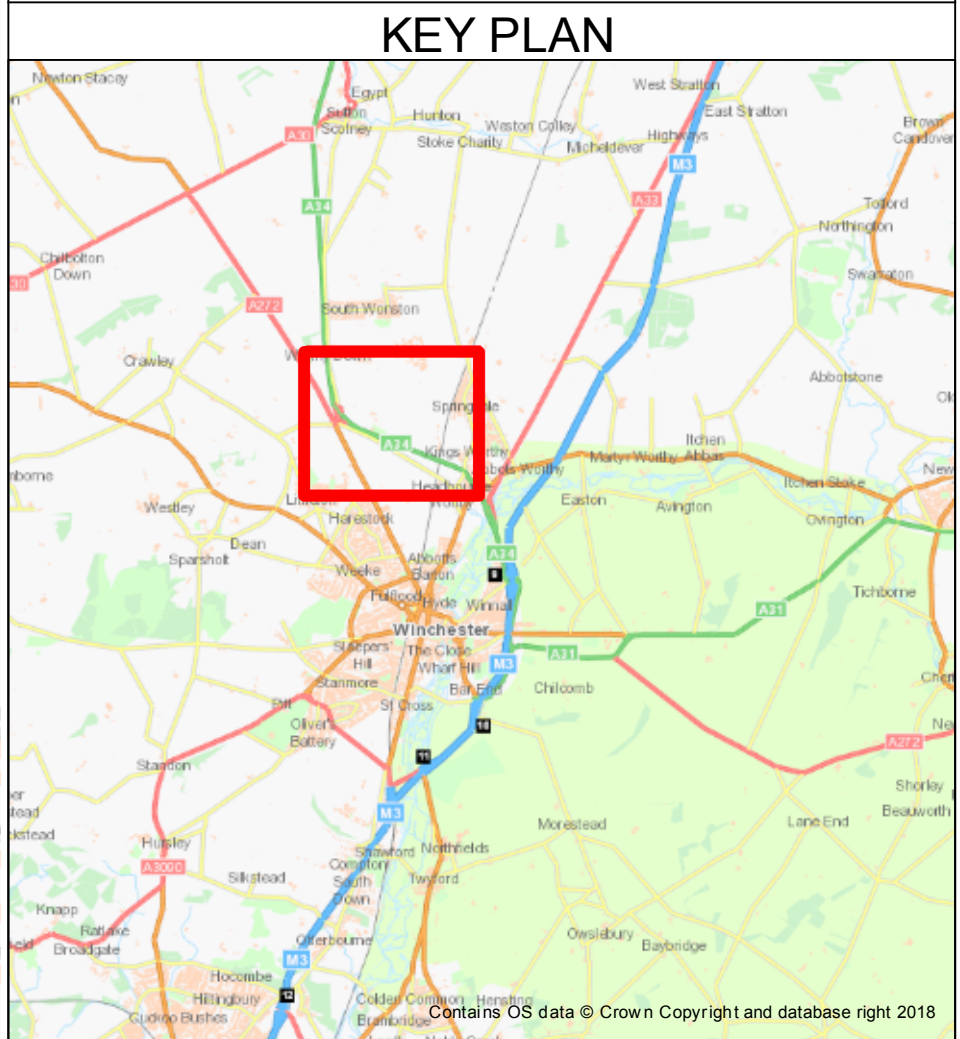
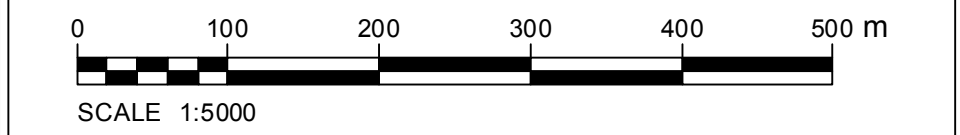




NOTES

LEGEND

Proposed Order Limits



P02	13/06/19	Approved and Accepted	ZRM	LW	TR	MZ	
Rev.	Date	Description of revision	Drawn	Checked	Reviewed	Approved	

DRAWING STATUS

A - APPROVED AND ACCEPTED

CLIENT

SCHEME TITLE

M3 JUNCTION 9 IMPROVEMENTS

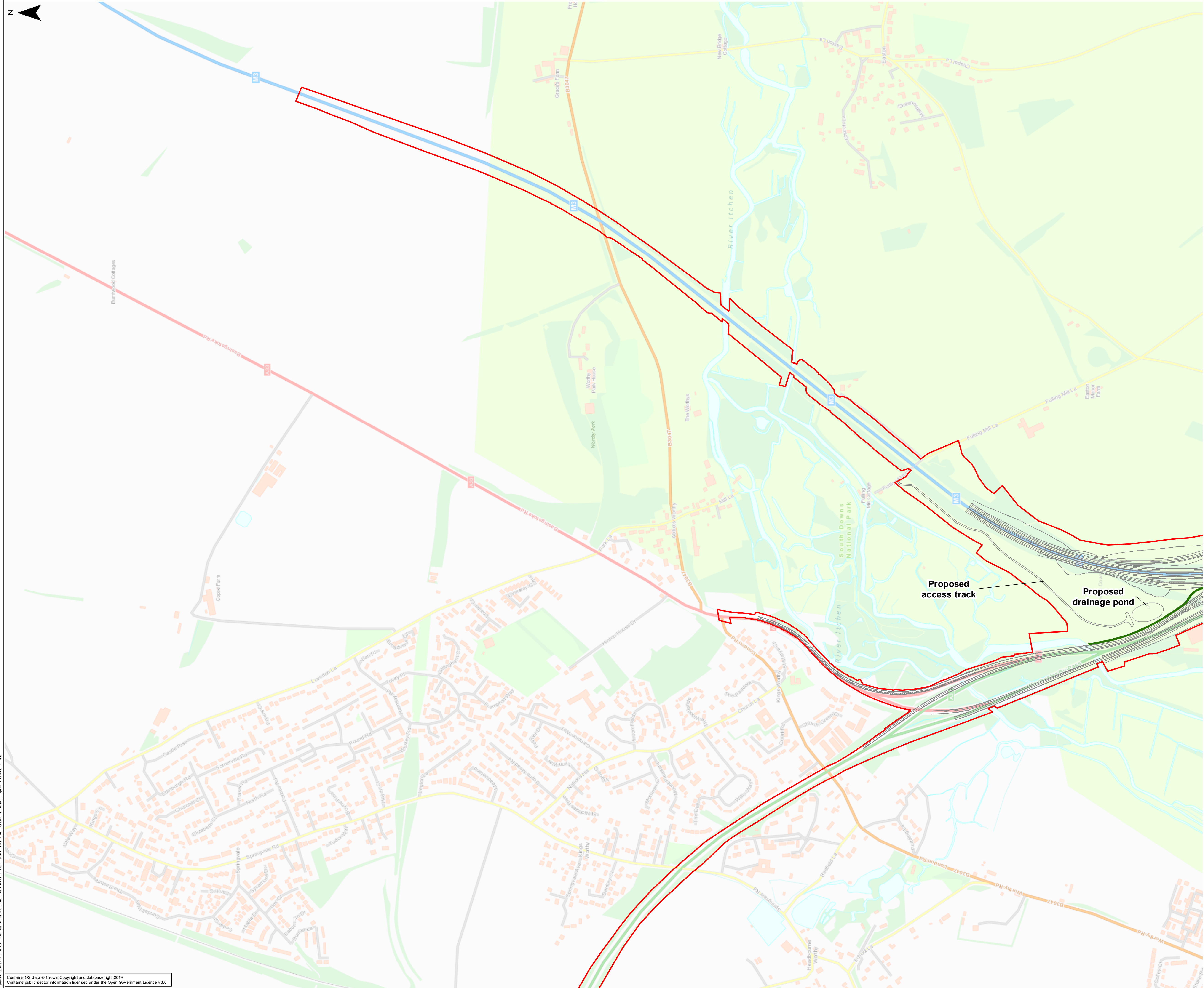
DRAWING TITLE

FIGURE 1-1  
PROPOSED SCHEME (SHEET 1 OF 4)

DRAWING UNITS U.N.O.	SCALE AT A1 (841 x 594mm)
ALL DIMENSIONS IN METRES UNLESS STATED OTHERWISE	1:5,000
DRAWING No.	REV.
HE551511-JAC-EGN-0_00_00-DR-LE-0014	P02

This drawing is not to be used in whole in or part other than for the intended purpose and project as defined on this drawing. Refer to the contract for full terms and conditions.





NOTES

LEGEND

Proposed Order Limits

Proposed scheme alignment

Proposed walking, cycling and horse-riding route

0100200300400500 m

SCALE 1:5000

KEY PLAN

Contains OS data © Crown Copyright and database right 2018

P02	13/06/19	Approved and Accepted		ZRM	LW	TR	MZ		
Rev.	Date	Description of revision		Drawn	Checked	Reviewed	Approved		

DRAWING STATUS

A - APPROVED AND ACCEPTED

CLIENT

SCHEME TITLE

M3 JUNCTION 9 IMPROVEMENTS

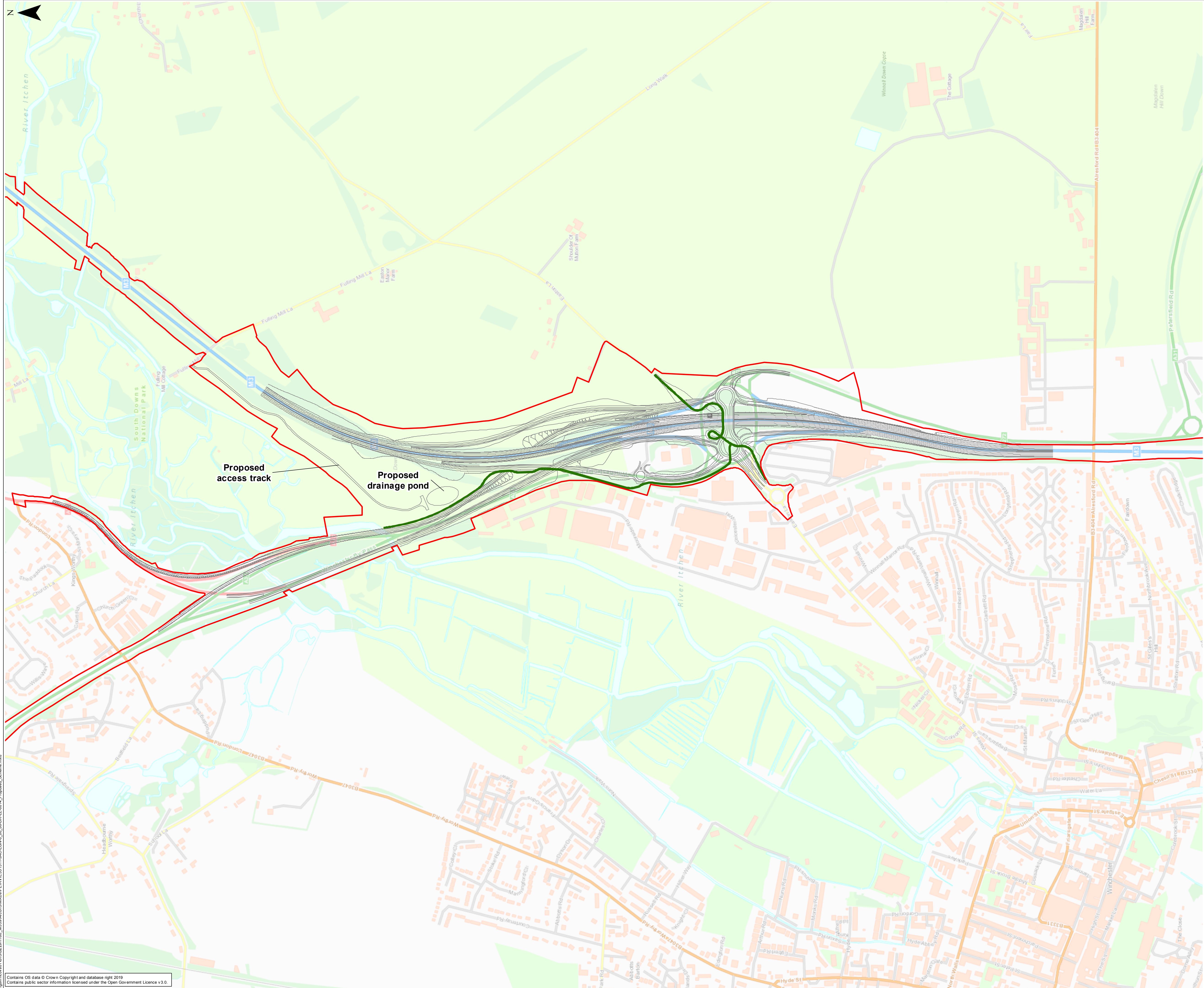
DRAWING TITLE

FIGURE 1-1  
PROPOSED SCHEME (SHEET 2 OF 4)

DRAWING UNITS UNO.		SCALE AT A1 (841 x 594mm)
ALL DIMENSIONS IN METRES UNLESS STATED OTHERWISE		1:5,000
DRAWING No.	REV.	
HE551511-JAC-EGN-0_00_00-DR-LE-0014	P02	

This drawing is not to be used in whole in or part other than for the intended purpose and project as defined on this drawing. Refer to the contract for full terms and conditions.

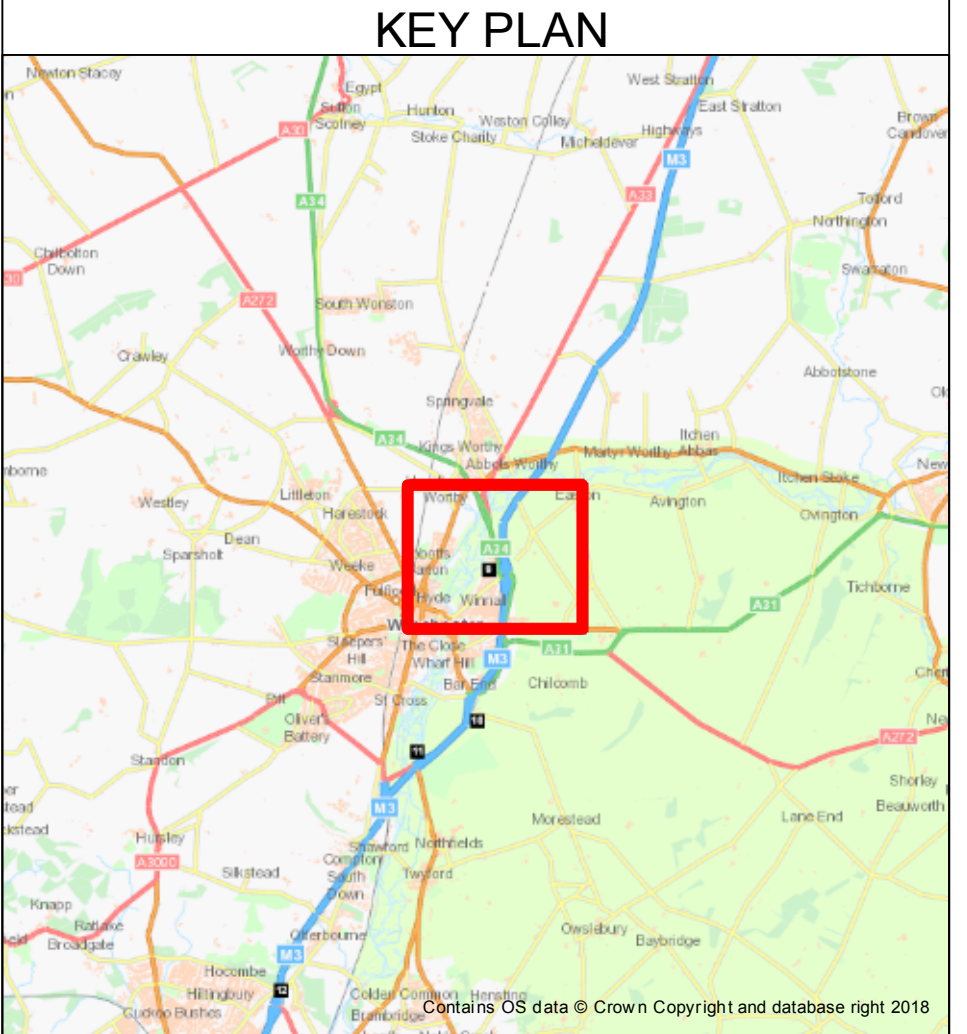
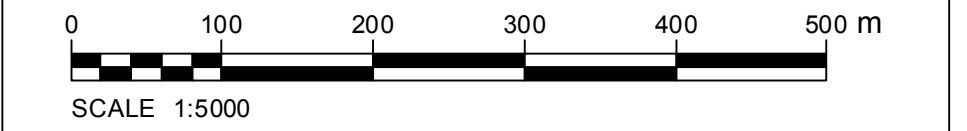




NOTES

**LEGEND**

- Proposed Order Limits
- Proposed scheme alignment
- Proposed walking, cycling and horse-riding route



P02	13/06/19	Approved and Accepted	ZRM	LW	TR	MZ	
Rev.	Date	Description of revision	Drawn	Checked	Reviewed	Approved	
DRAWING STATUS							

A - APPROVED AND ACCEPTED

CLIENT

The logo for Highways England, featuring a stylized blue 'h' and the text 'highways england'.

SCHEME TITLE

M3 JUNCTION 9 IMPROVEMENTS

DRAWING TITLE

FIGURE 1-1  
PROPOSED SCHEME (SHEET 3 OF 4)

DRAWING UNITS UNO.  
ALL DIMENSIONS IN METRES  
UNLESS STATED OTHERWISE

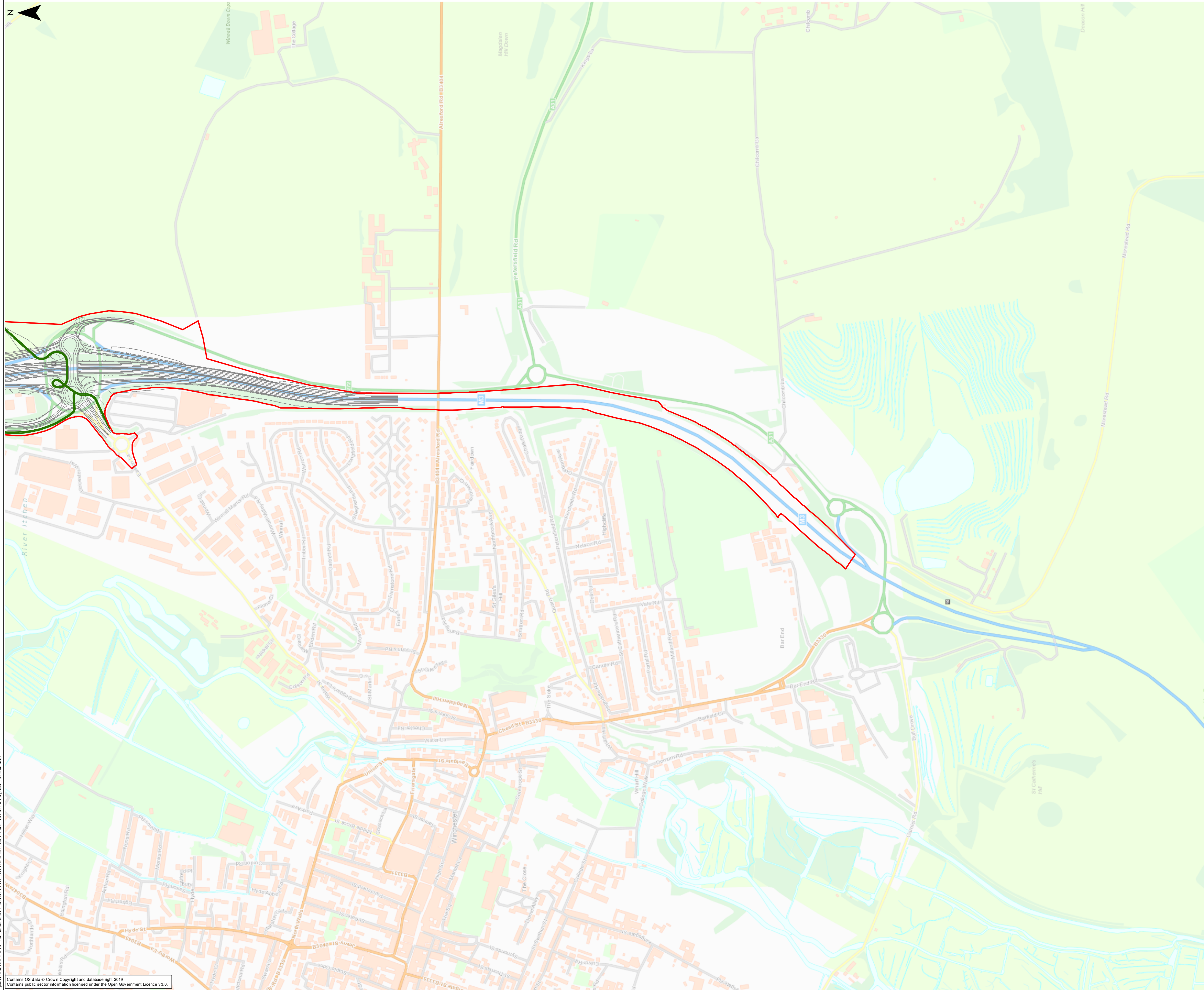
SCALE AT A1 (841 x 594mm)  
1:5,000

DRAWING No.  
HE551511-JAC-EGN-0\_00\_00-DR-LE-0014

REV.  
P02

This drawing is not to be used in whole or in part other than for the intended purpose and project as defined on this drawing. Refer to the contract for full terms and conditions.

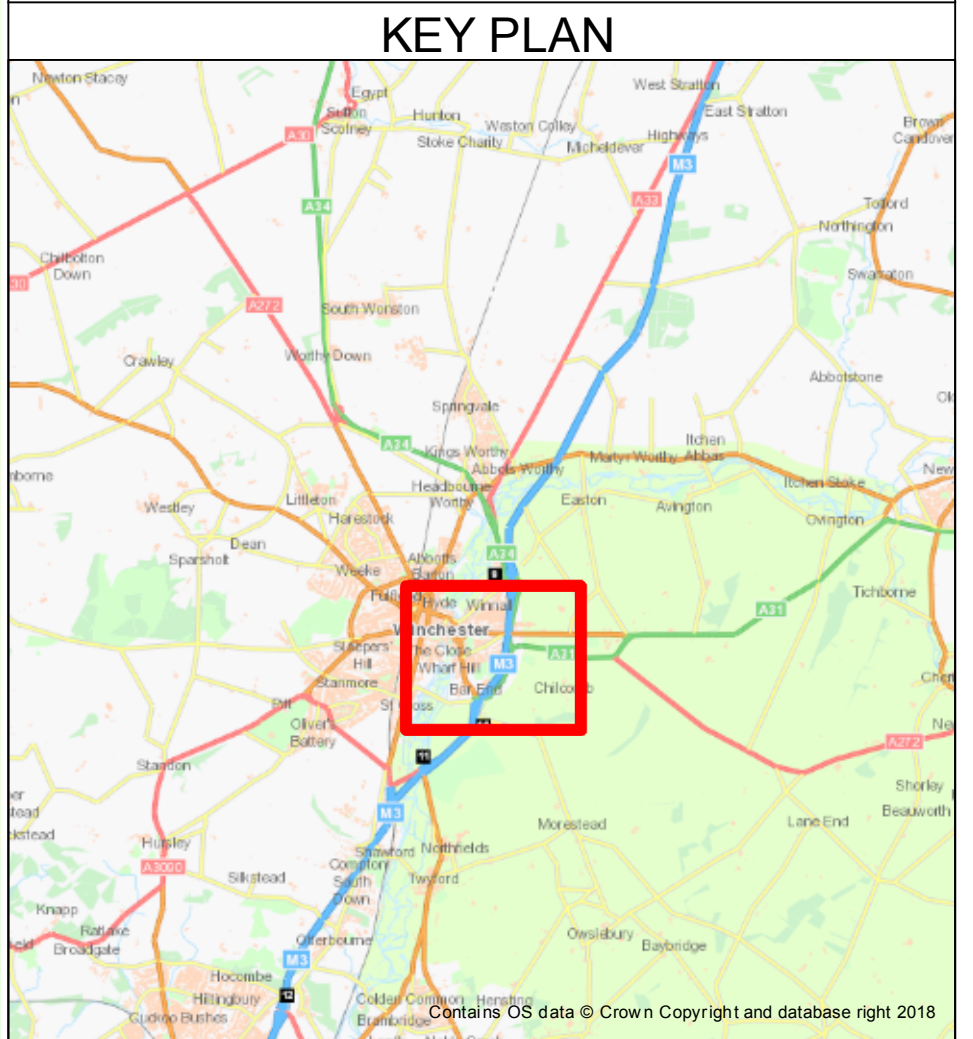
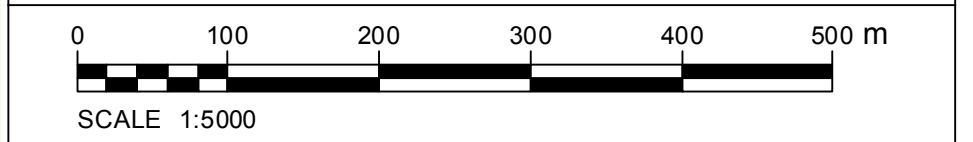




NOTES

**LEGEND**

- Proposed Order Limits
- Proposed scheme alignment
- Proposed walking, cycling and horse-riding route



P02	13/06/19	Approved and Accepted	ZRM	LW	TR	MZ	
Rev.	Date	Description of revision	Drawn	Checked	Reviewed	Approved	

DRAWING STATUS

A - APPROVED AND ACCEPTED

CLIENT

SCHEME TITLE

M3 JUNCTION 9 IMPROVEMENTS

DRAWING TITLE

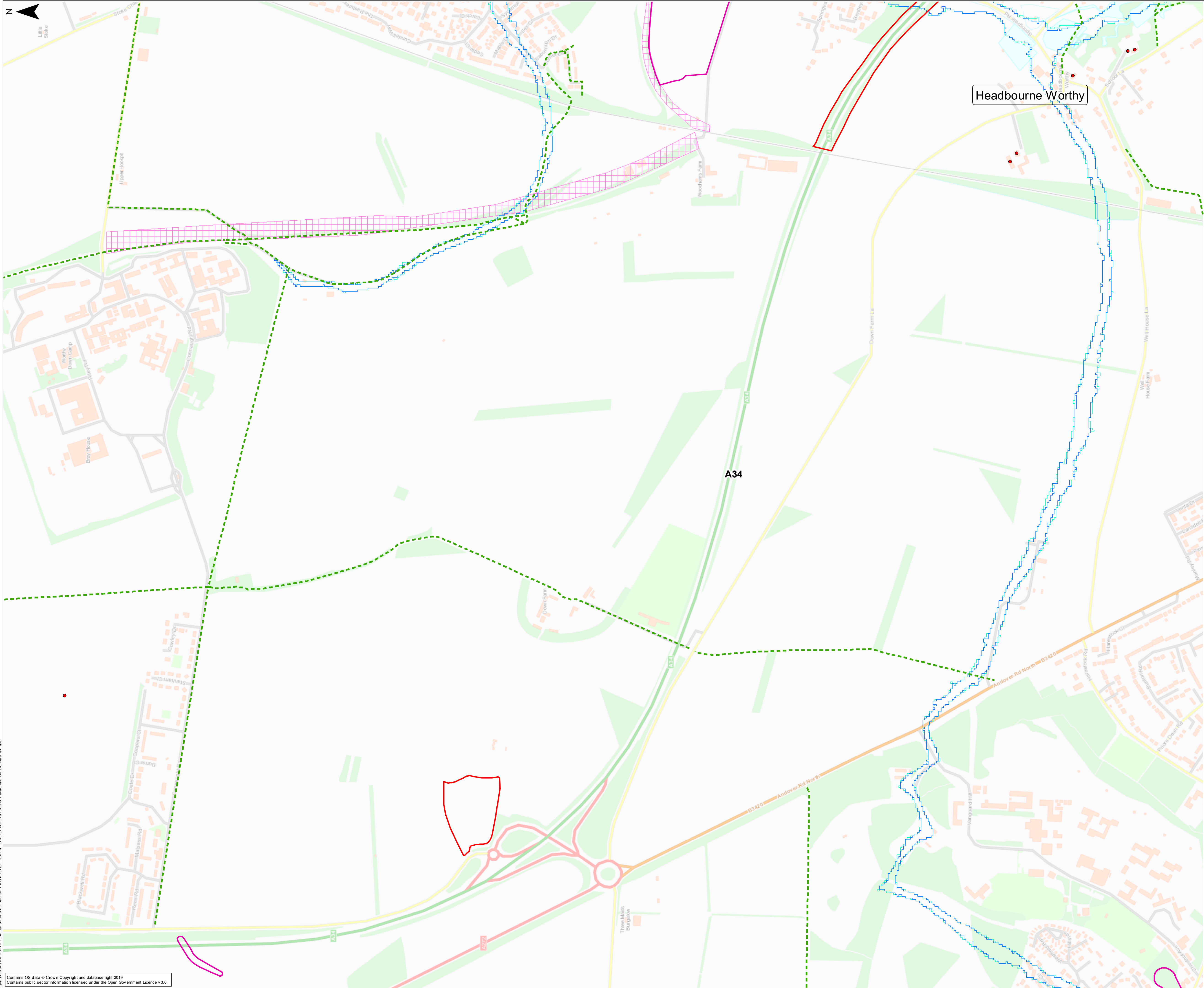
FIGURE 1-1  
PROPOSED SCHEME (SHEET 4 OF 4)

DRAWING UNITS U.N.O.	SCALE AT A1 (841 x 594mm)
ALL DIMENSIONS IN METRES UNLESS STATED OTHERWISE	1:5,000

DRAWING No.	REV.
HE551511-JAC-EGN-0_00_00-DR-LE-0014	P02

This drawing is not to be used in whole in or part other than for the intended purpose and project as defined on this drawing. Refer to the contract for full terms and conditions.





### NOTES

#### LEGEND

- Proposed Order Limits
- Listed Building
- Public Right of Way
- National Trail
- National Cycle Network Route 23
- Scheduled Monument
- Special Areas of Conservation
- EA Flood Zone 3 (1 in 100 or greater AEP)
- EA Flood Zone 2 (1 in 100 - 1 in 1000 AEP)
- Air Quality Management Area (2018)
- Noise Important Area
- Historic Landfill
- Site of Special Scientific Interest
- Registered Parks and Gardens
- South Downs National Park

0100200300400500 m

SCALE 1:5000

#### KEY PLAN

P01	28/03/19	Initial Issue	ZRM	LW	AB	MZ
P02	14/06/19	Approved and Accepted	LW	LD	LD	MZ
Rev.	Date	Description of revision	Drawn	Checked	Reviewed	Approved

DRAWING STATUS

A – APPROVED AND ACCEPTED

CLIENT

SCHEME TITLE

M3 JUNCTION 9 IMPROVEMENTS

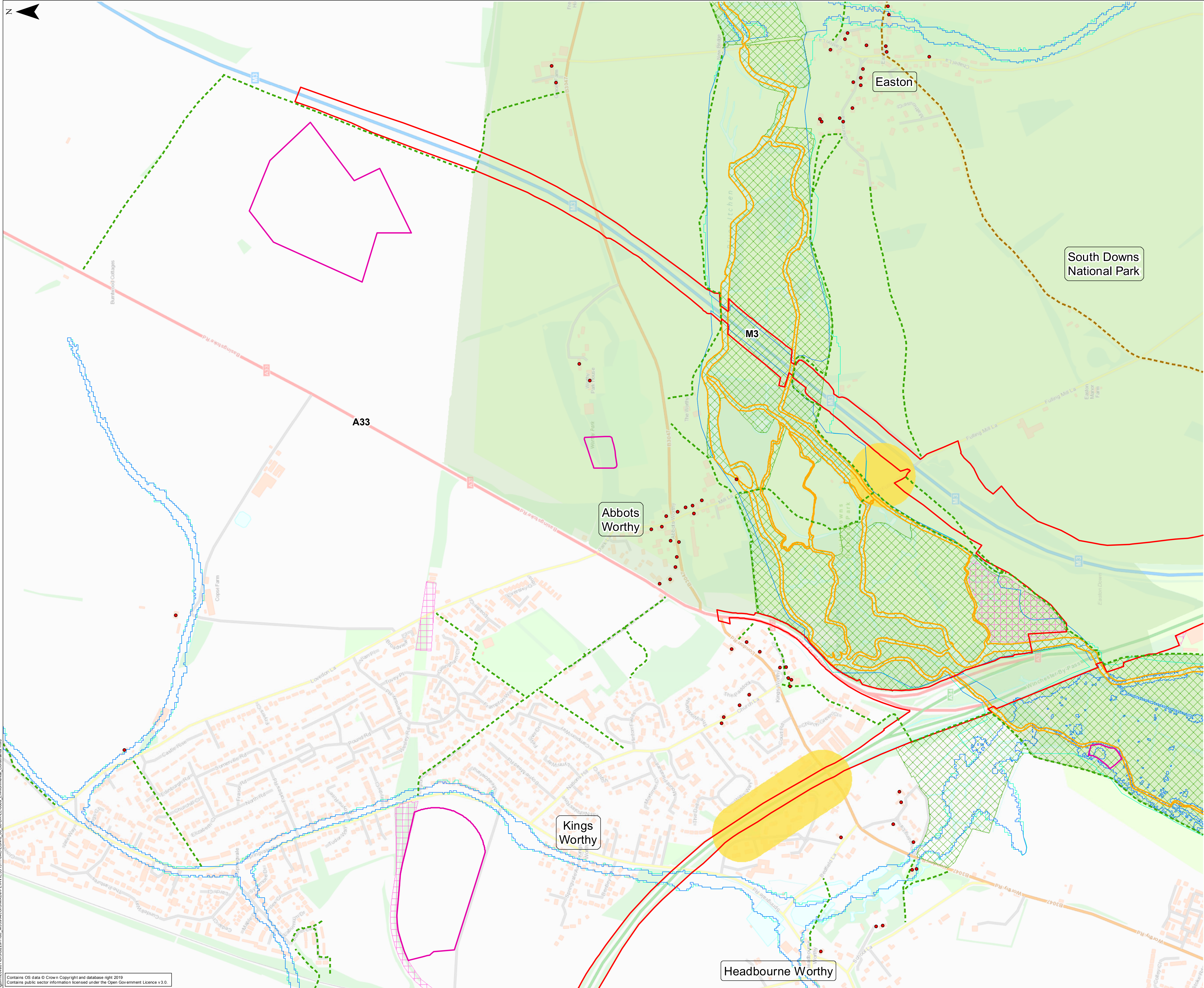
DRAWING TITLE

FIGURE 1-2  
ENVIRONMENTAL CONSTRAINTS  
(SHEET 1 OF 4)

DRAWING UNITS U.N.O.	SCALE AT A1 (841 x 594mm)
ALL DIMENSIONS IN METRES UNLESS STATED OTHERWISE	1:5,000
DRAWING No.	REV.
HE551511-JAC-EGN-0_00_00-DR-LE-0009	P02

This drawing is not to be used in whole in or part other than for the intended purpose and project as defined on this drawing. Refer to the contract for full terms and conditions.





### NOTES

#### LEGEND

- Proposed Order Limits
- Listed Building
- Public Right of Way
- National Trail
- National Cycle Network Route 23
- Scheduled Monument
- Special Areas of Conservation
- EA Flood Zone 3 (1 in 100 or greater AEP)
- EA Flood Zone 2 (1 in 100 - 1 in 1000 AEP)
- Air Quality Management Area (2018)
- Noise Important Area
- Historic Landfill
- Site of Special Scientific Interest
- Registered Parks and Gardens
- South Downs National Park

0100200300400500

m

SCALE 1:5000

#### KEY PLAN

P01	28/03/19	Initial Issue	ZRM	LW	AB	MZ
P02	14/06/19	Approved and Accepted	LW	LD	LD	MZ
Rev.	Date	Description of revision	Drawn	Checked	Reviewed	Approved

DRAWING STATUS

A – APPROVED AND ACCEPTED

CLIENT

SCHEME TITLE

M3 JUNCTION 9 IMPROVEMENTS

DRAWING TITLE

FIGURE 1-2  
ENVIRONMENTAL CONSTRAINTS  
(SHEET 2 OF 4)

DRAWING UNITS U.N.O.  
ALL DIMENSIONS IN METRES  
UNLESS STATED OTHERWISE

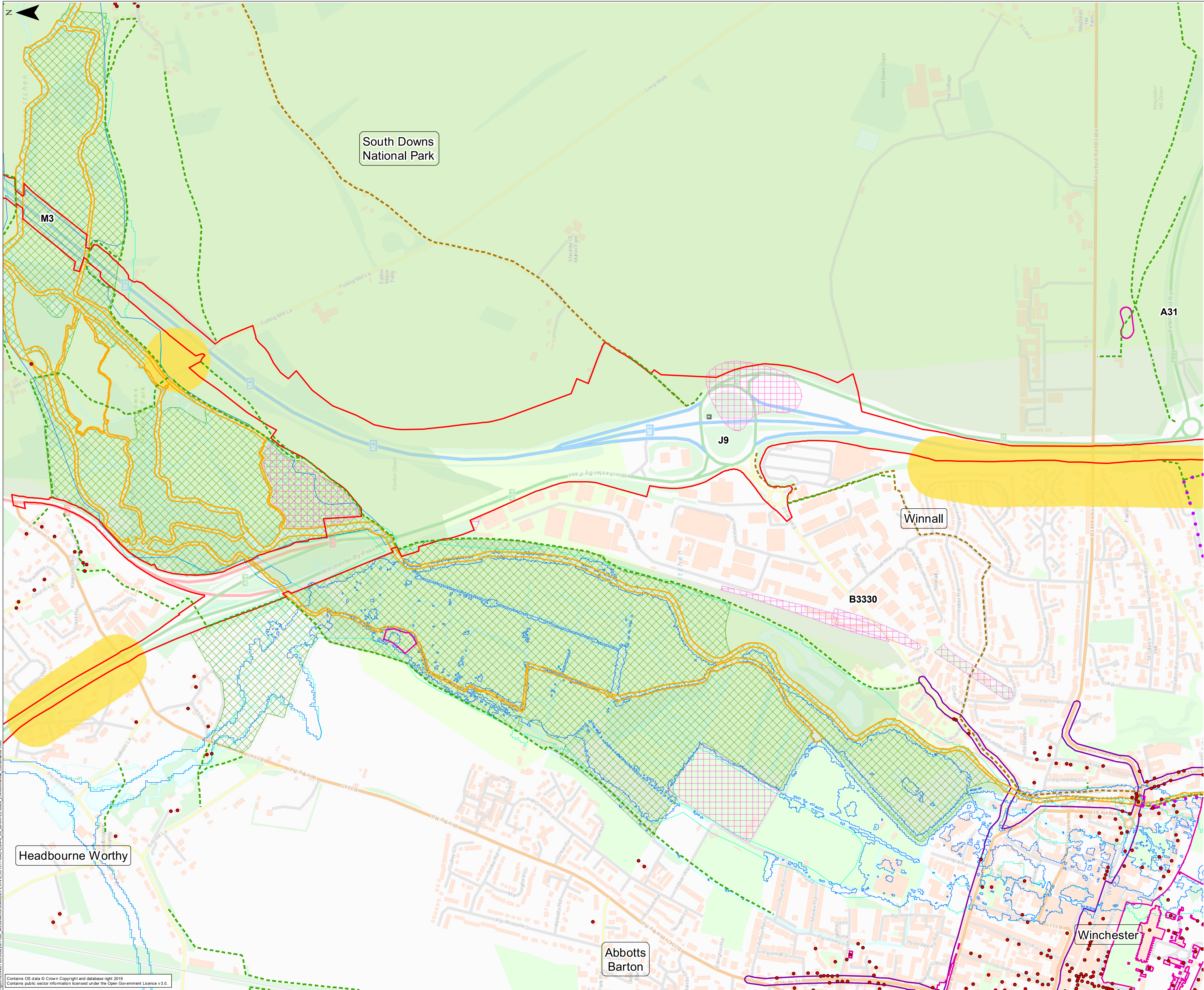
SCALE AT A1 (841 x 594mm)  
1:5,000

DRAWING No.  
HE551511-JAC-EGN-0\_00\_00-DR-LE-0009

REV.  
P02

This drawing is not to be used in whole in or part other than for the intended purpose and project as defined on this drawing. Refer to the contract for full terms and conditions.





### NOTES

#### LEGEND

- Proposed Order Limits
- Listed Building
- Public Right of Way
- National Trail
- National Cycle Network Route 23
- Scheduled Monument
- Special Areas of Conservation
- EA Flood Zone 3 (1 in 100 or greater AEP)
- EA Flood Zone 2 (1 in 100 - 1 in 1000 AEP)
- Air Quality Management Area (2018)
- Noise Important Area
- Historic Landfill
- Site of Special Scientific Interest
- Registered Parks and Gardens
- South Downs National Park

0100200300400500m

SCALE 1:5000

#### KEY PLAN

P01	28/03/19	Initial Issue	ZRM	LW	AB	MZ
P02	14/06/19	Approved and Accepted	LW	LD	LD	MZ
Rev.	Date	Description of revision	Drawn	Checked	Reviewed	Approved

DRAWING STATUS

A – APPROVED AND ACCEPTED

CLIENT

SCHEME TITLE

M3 JUNCTION 9 IMPROVEMENTS

DRAWING TITLE

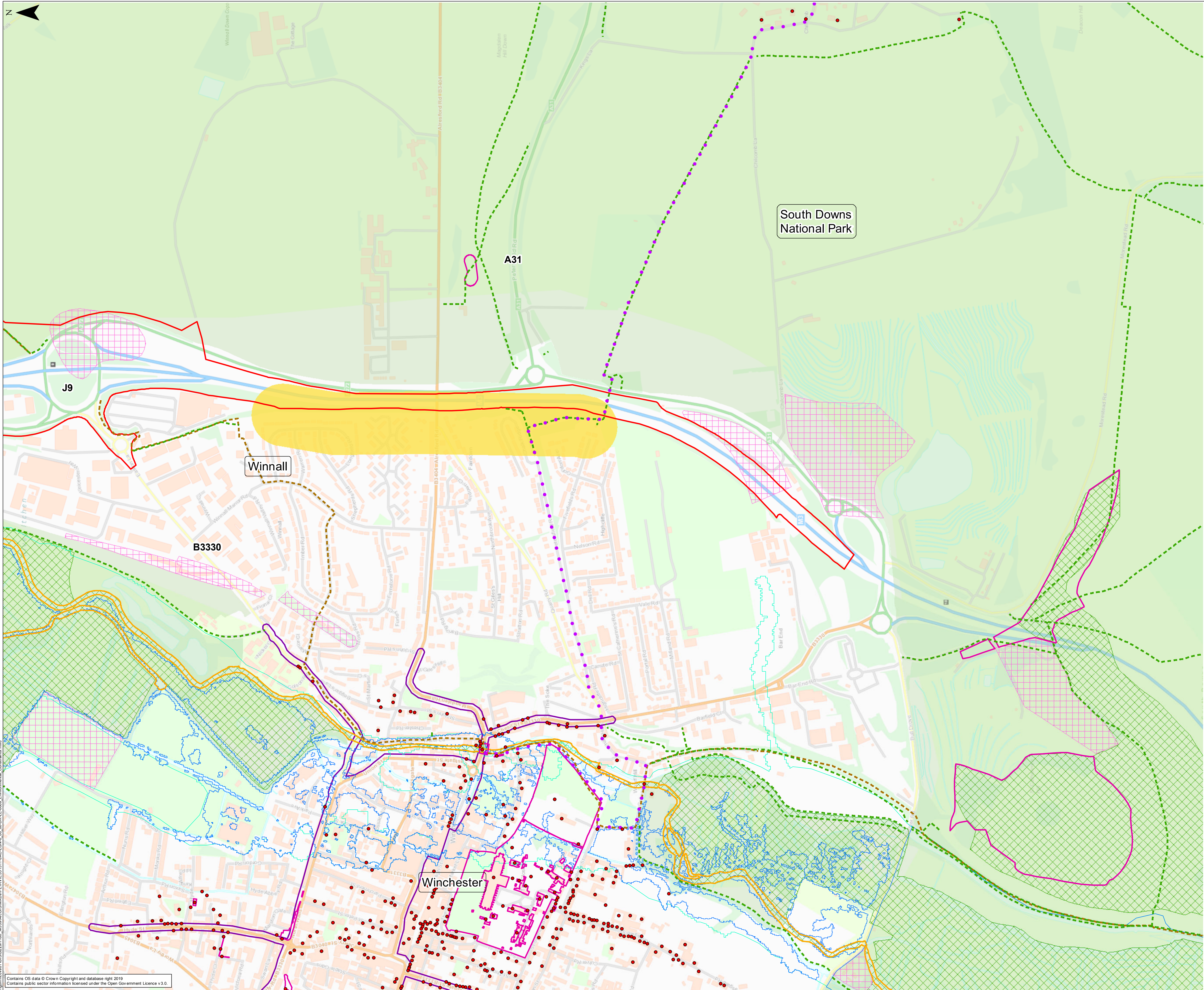
FIGURE 1-2  
ENVIRONMENTAL CONSTRAINTS  
(SHEET 3 OF 4)

DRAWING UNITS U.N.O.	SCALE AT A1 (841 x 594mm)
ALL DIMENSIONS IN METRES UNLESS STATED OTHERWISE	1:5,000
DRAWING No.	REV.
HE551511-JAC-EGN-0_00_00-DR-LE-0009	P02

This drawing is not to be used in whole in or part other than for the intended purpose and project as defined on this drawing. Refer to the contract for full terms and conditions.

\\gmcs001\GIS\B229H180\_M3\09\AC\GIS\MapDocs\PER\HE551511\_JAC-EGN-0\_00\_00-DR-LE-0009\_Environmental\_Constraints.mxd





### NOTES

### LEGEND

- Proposed Order Limits
- Listed Building
- Public Right of Way
- National Trail
- National Cycle Network Route 23
- Scheduled Monument
- Special Areas of Conservation
- EA Flood Zone 3 (1 in 100 or greater AEP)
- EA Flood Zone 2 (1 in 100 - 1 in 1000 AEP)
- Air Quality Management Area (2018)
- Noise Important Area
- Historic Landfill
- Site of Special Scientific Interest
- Registered Parks and Gardens
- South Downs National Park

0100200300400500

SCALE 1:5000

### KEY PLAN

P01	28/03/19	Initial Issue	ZRM	LW	AB
P02	14/06/19	Approved and Accepted	LW	LD	MZ
Rev.	Date	Description of revision	Drawn	Checked	Reviewed/Approved

DRAWING STATUS

A – APPROVED AND ACCEPTED

CLIENT

SCHEME TITLE

M3 JUNCTION 9 IMPROVEMENTS

DRAWING TITLE

FIGURE 1-2  
ENVIRONMENTAL CONSTRAINTS  
(SHEET 4 OF 4)

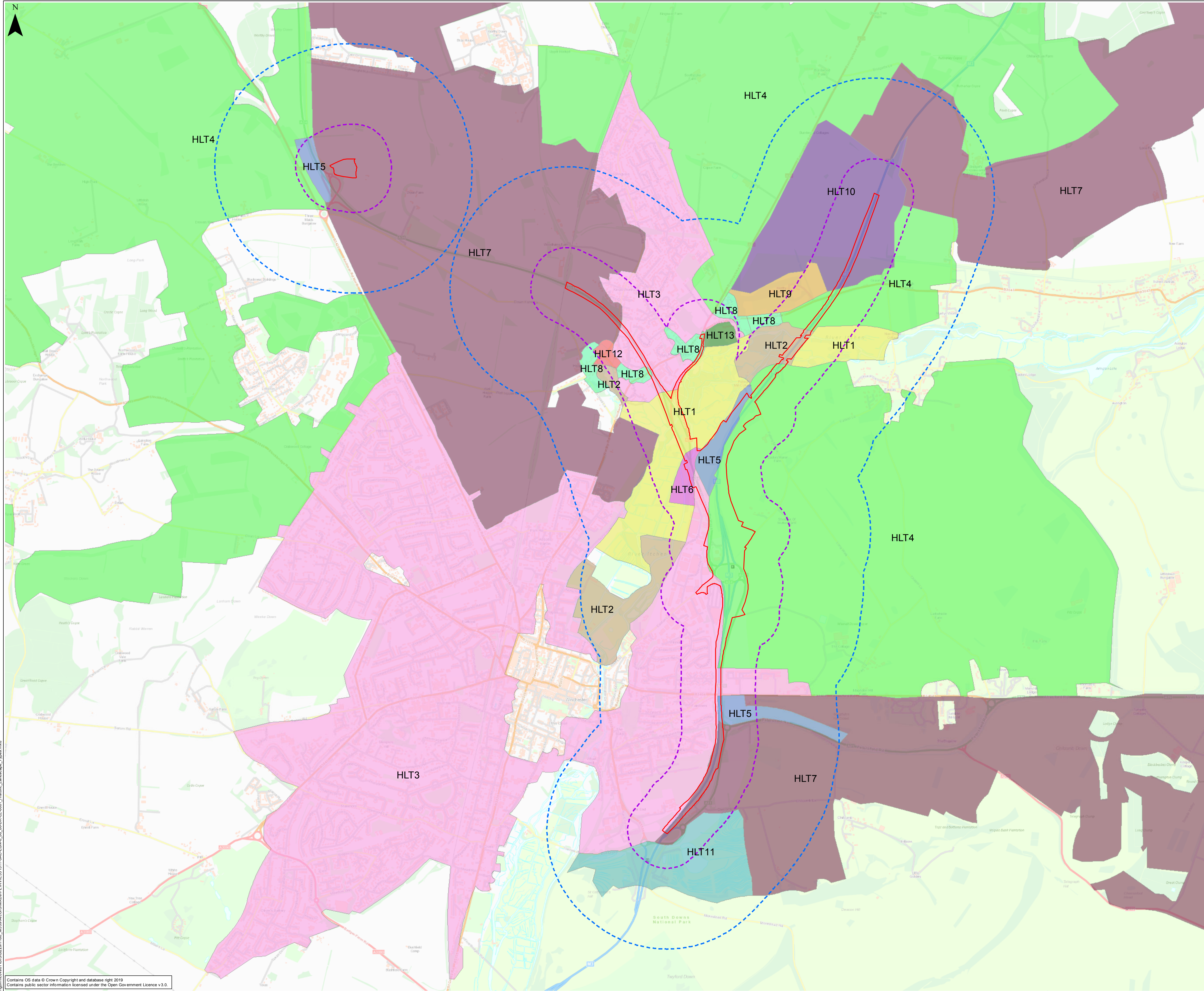
DRAWING UNITS U.N.O.	SCALE AT A1 (841 x 594mm)
ALL DIMENSIONS IN METRES UNLESS STATED OTHERWISE	1:5,000
DRAWING No.	REV.
HE551511-JAC-EGN-0_00_00-DR-LE-0009	P02

This drawing is not to be used in whole in or part other than for the intended purpose and project as defined on this drawing. Refer to the contract for full terms and conditions.









### NOTES

#### LEGEND

Proposed Order Limits

300m study area

1km study area

HLT1, Water meadows

HLT10, "Prairie" fields (19th cent enclosure with extensive boundary loss)

HLT11, Reservoirs and water treatment

HLT12, Watercress beds

HLT13, Abbots Worthy House (Grounds)

HLT2, Miscellaneous valley bottom paddocks and pastures

HLT3, Post 1810 settlement (general)

HLT4, Medium regular fields with straight boundaries (parliamentary type enclosure)

HLT5, Downland

HLT6, Marsh and rough grazing (parliamentary type enclosure)

HLT7, Large regular fields with straight boundaries (parliamentary type enclosure)

HLT8, Village/hamlet 1810 extent

HLT9, Deer parks

050010001500

m

SCALE 1:15000

#### KEY PLAN

P01	08/04/19	Suitable for Review & Comment	RS	ED	ED
P02	12/06/19	Approved and Accepted	JS	LW	TR
Rev.	Date	Description of revision	Drawn	Checked	Reviewed/Approved

DRAWING STATUS

A – APPROVED AND ACCEPTED

CLIENT

SCHEME TITLE

M3 JUNCTION 9 IMPROVEMENTS

DRAWING TITLE

FIGURE 5-2-1  
HISTORIC LANDSCAPE TYPES

DRAWING UNITS U.N.O.

SCALE AT A1 (841 x 594mm)

ALL DIMENSIONS IN METRES  
UNLESS STATED OTHERWISE

1:15000

DRAWING No.

REV.

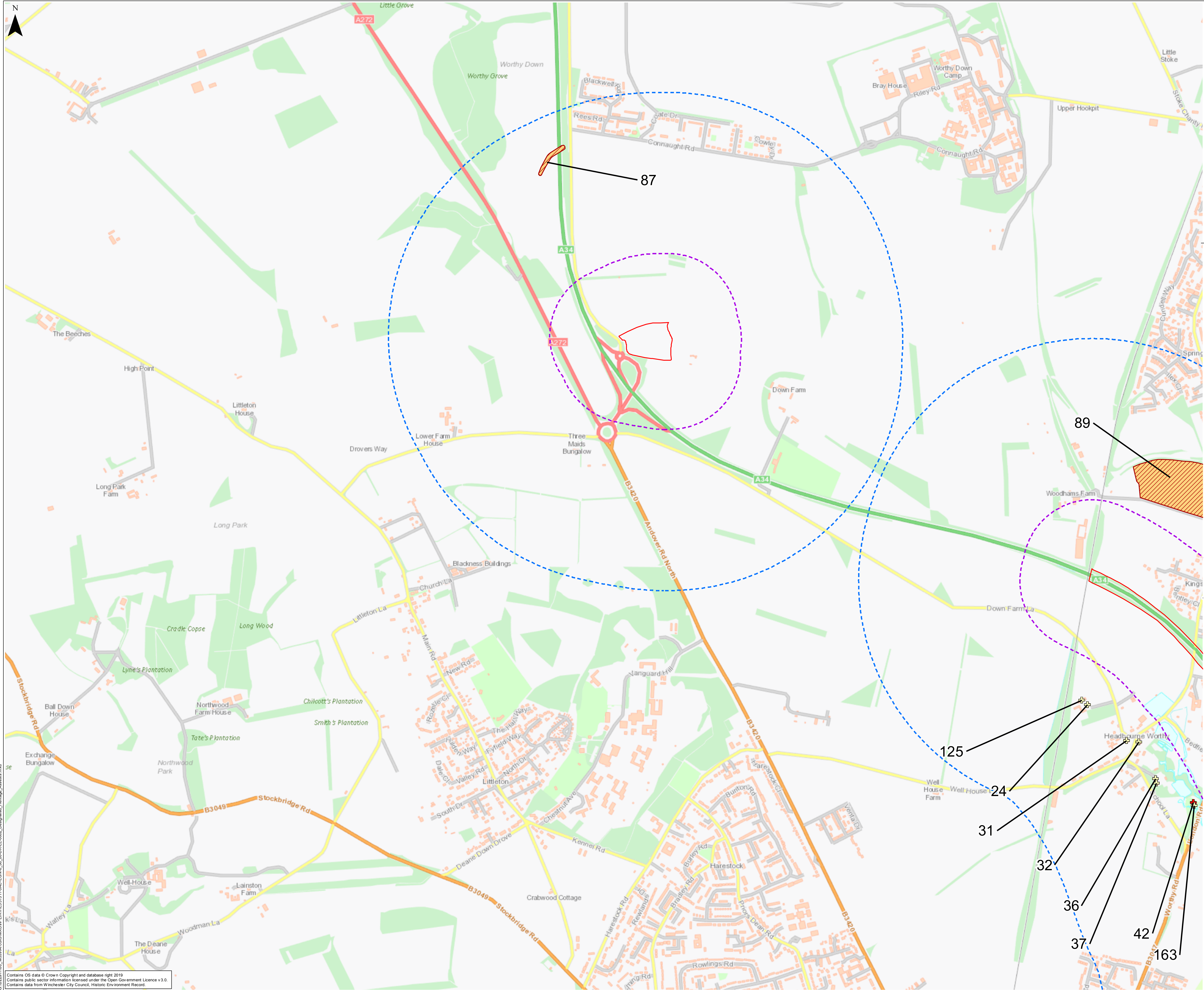
HE551511-JAC-EGN-0\_00\_00-DR-LE-0001

P02

This drawing is not to be used in whole in or part other than for the intended purpose and project as defined on this drawing. Refer to the contract for full terms and conditions.

Contains OS data © Crown Copyright and database right 2019  
Contains public sector information licensed under the Open Government Licence v3.0.





### NOTES

#### LEGEND

- Proposed Order Limits
- 300m study area
- 1km study area
- Grade I listed building
- Grade II\* listed building
- Grade II listed building
- Scheduled Monument
- Conservation Area

0 200 400 600 800 m

SCALE 1:7500

#### KEY PLAN

P01	08/04/19	Suitable for Review & Comment	RS	ED	ED	MZ
P02	13/06/19	Approved and Accepted	JS	LW	TR	MZ
P03	19/06/19	Approved and Accepted	JS	LW	TR	MZ
Rev.	Date	Description of revision	Drawn	Checked	Reviewed	Approved

DRAWING STATUS

A – APPROVED AND ACCEPTED

CLIENT

SCHEME TITLE

M3 JUNCTION 9 IMPROVEMENTS

DRAWING TITLE

FIGURE 5-2-2  
DESIGNATED CULTURAL  
HERITAGE ASSETS (SHEET 1 OF 3)

DRAWING UNITS UNO.

ALL DIMENSIONS IN METRES  
UNLESS STATED OTHERWISE

SCALE AT A1 (841 x 594mm)

1:7500

DRAWING No.

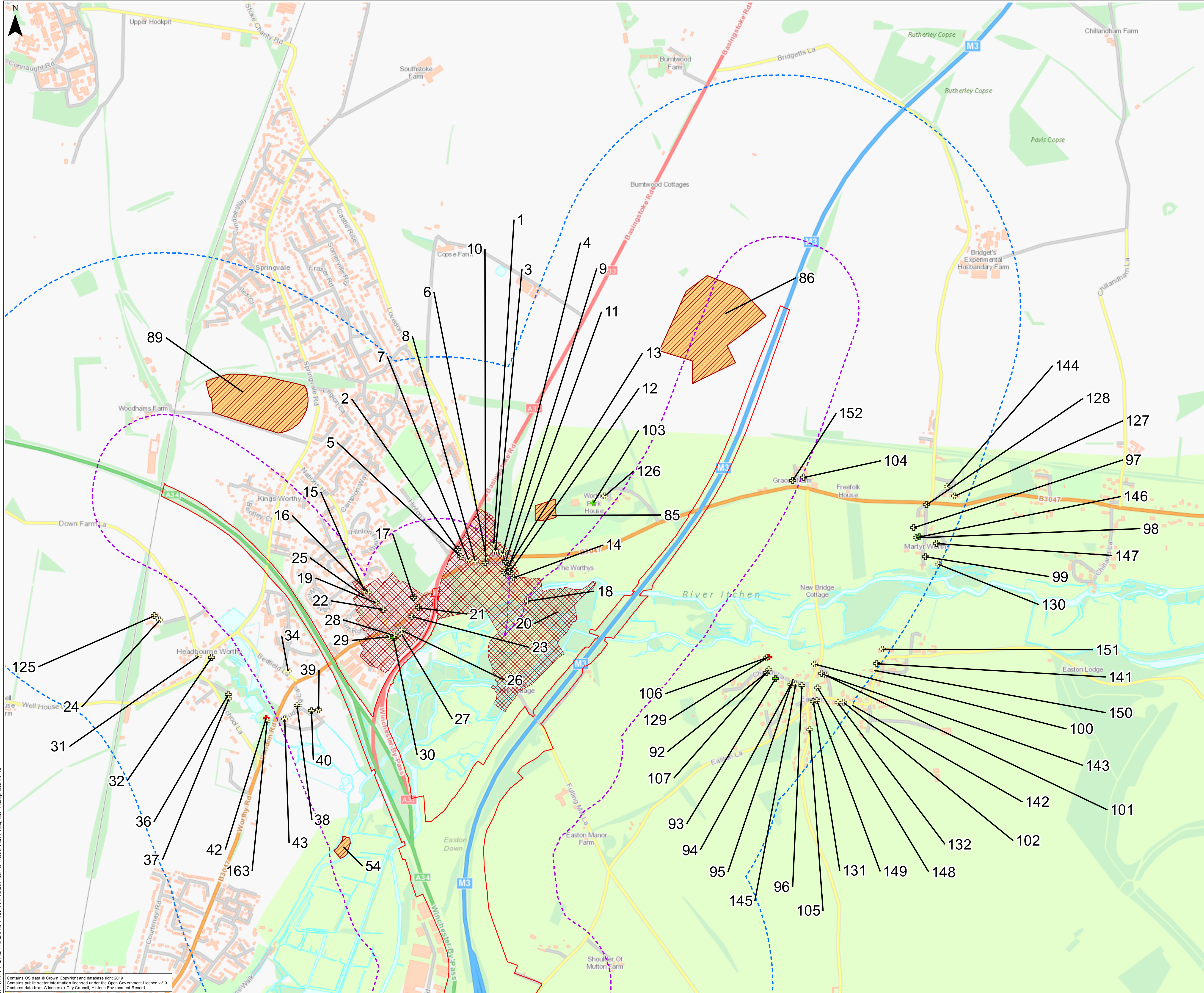
HE551511-JAC-EGN-0\_00\_00-DR-LE-0002

REV.

P03

This drawing is not to be used in whole in or part other than for the intended purpose and project as defined on this drawing. Refer to the contract for full terms and conditions.

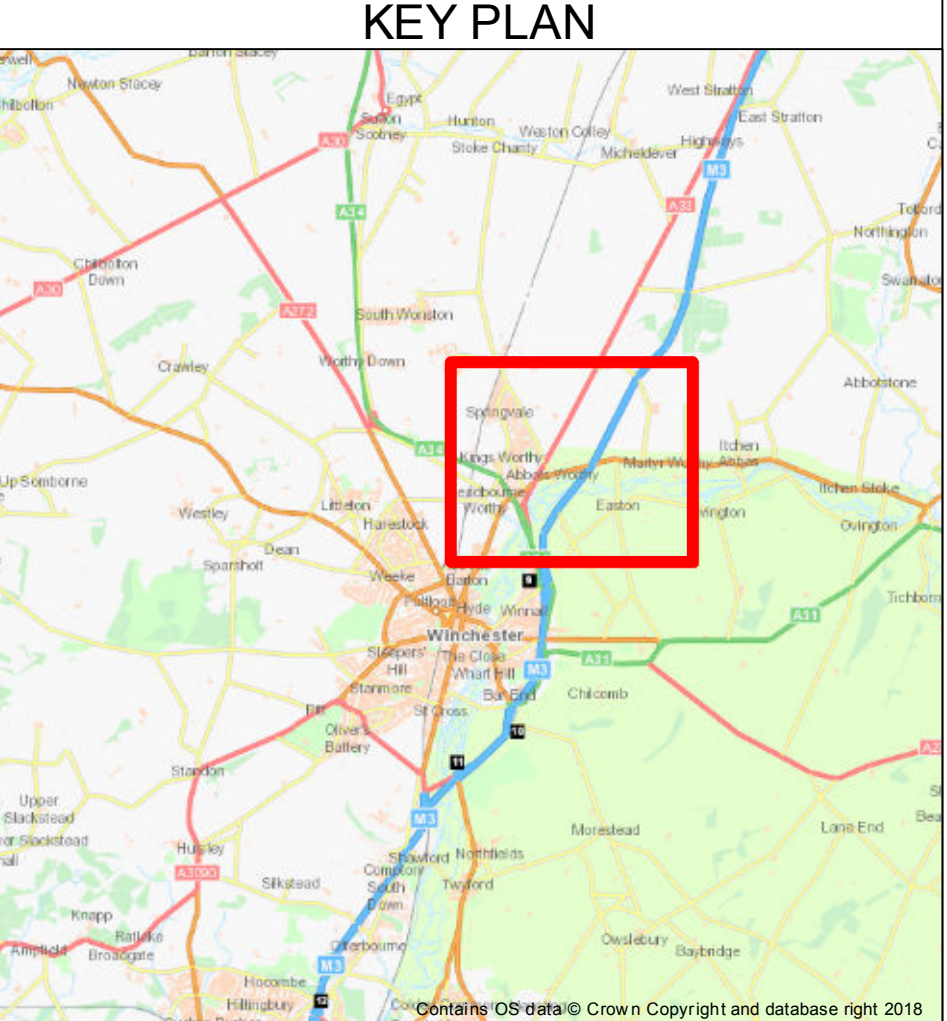
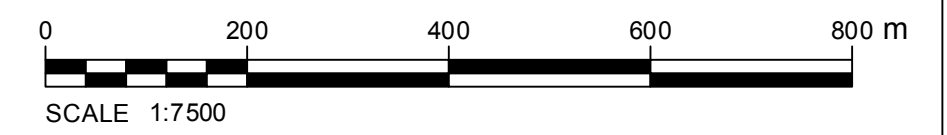




NOTES

LEGEND

- Proposed Order Limits
- 300m study area
- 1km study area
- Grade I listed building
- Grade II\* listed building
- Grade II listed building
- Scheduled Monument
- Conservation Area



Rev.	Date	Description of revision	Drawn	Checked	Reviewed	Approved
P01	08/04/19	Suitable for Review & Comment	RS	ED	ED	MZ
P02	13/06/19	Approved and Accepted	JS	LW	TR	MZ
P03	19/06/19	Approved and Accepted	JS	LW	TR	MZ

DRAWING STATUS

A – APPROVED AND ACCEPTED



SCHEME TITLE

M3 JUNCTION 9 IMPROVEMENTS

DRAWING TITLE

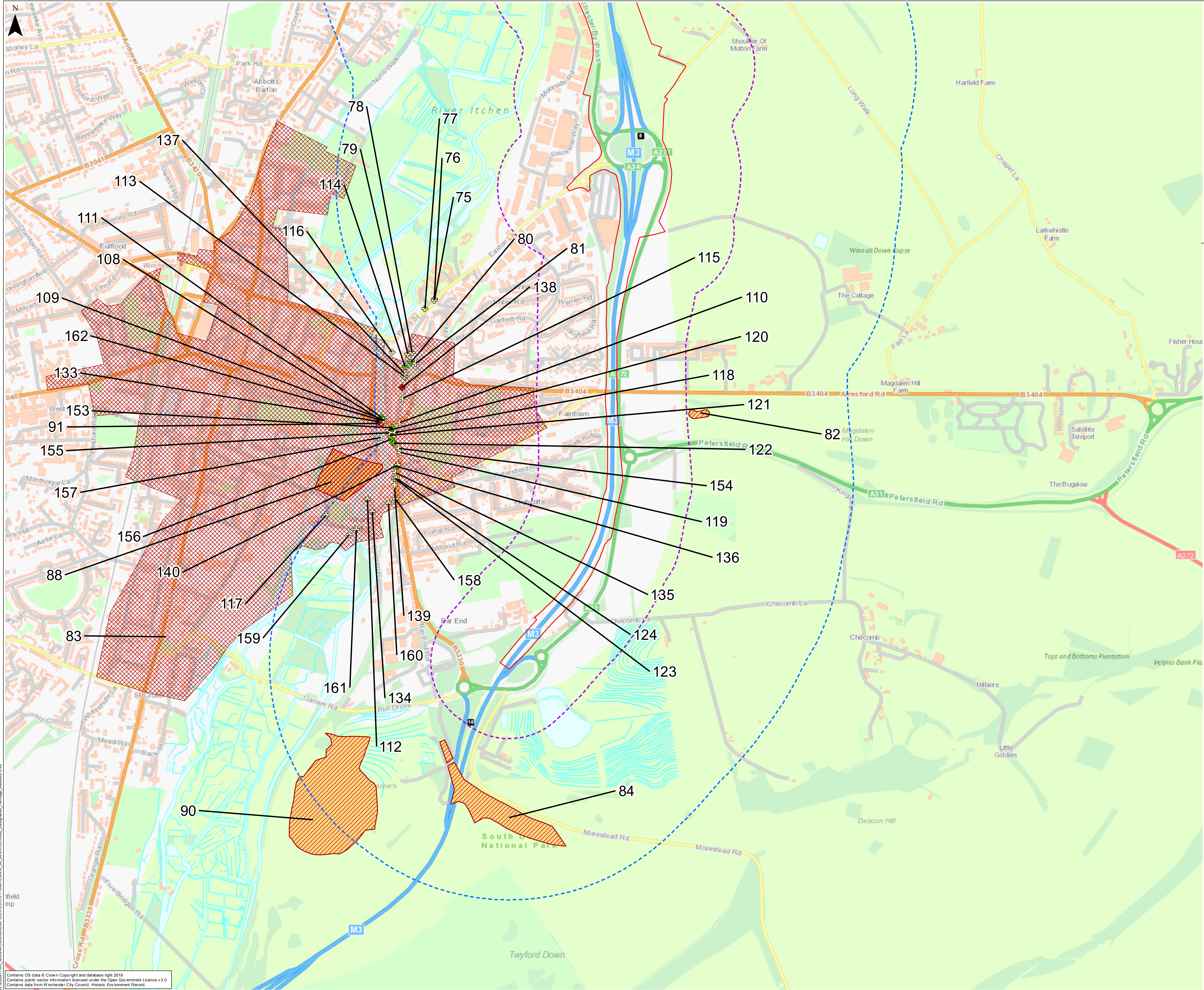
FIGURE 5-2-2  
DESIGNATED CULTURAL  
HERITAGE ASSETS (SHEET 2 OF 3)

DRAWING UNITS UNO.	SCALE AT A1 (841 x 594mm)
ALL DIMENSIONS IN METRES UNLESS STATED OTHERWISE	1:7500
DRAWING No.	REV.
HE551511-JAC-EGN-0_00_00-DR-LE-0002	P03

This drawing is not to be used in whole in or part other than for the intended purpose and project as defined on this drawing. Refer to the contract for full terms and conditions.

Contains OS data © Crown Copyright and database right 2019  
Contains public sector information licensed under the Open Government Licence v3.0  
Contains data from Winchester City Council, Historic Environment Record





NOTES

LEGEND

Proposed Order Limits

300m study area

1km study area

Grade I listed building

Grade II\* listed building

Grade II listed building

Scheduled Monument

Conservation Area

0200400600800

m

SCALE 1:7500

KEY PLAN

P01	08/04/19	Subtle for Review & Comment	RS	ED	ED	MZ
P02	13/06/19	Approved and Accepted	JS	LW	TR	MZ
P03	19/06/19	Approved and Accepted	JS	LW	TR	MZ
Rev.	Date	Description of revision	Drawn	Checked	Reviewed	Approved

DRAWING STATUS

A – APPROVED AND ACCEPTED

CUSTOMER

SCHEME TITLE

M3 JUNCTION 9 IMPROVEMENTS

DRAWING TITLE

FIGURE 5-2-2  
DESIGNATED CULTURAL  
HERITAGE ASSETS (SHEET 3 OF 3)

DRAWING UNITS UNO.  
ALL DIMENSIONS IN METRES  
UNLESS STATED OTHERWISE

SCALE AT A1 (841 x 594mm)  
1:7500

DRAWING No.  
HE551511-JAC-EGN-0\_00\_00-DR-LE-0002

REV.  
P03

This drawing is not to be used in whole in or part other than for the intended purpose and project as defined on this drawing. Refer to the contract for full terms and conditions.

G:\2019\H50\_M3\9A\GOS\MA\DR\H551511-JAC-EGN-0\_00\_00-DR-LE-0002\_Designated\_Heritage\_Assets.mxd

Contains OS data © Crown Copyright and database right 2019  
Contains public sector information licensed under the Open Government Licence v3.0  
Contains data from Winchester City Council, Historic Environment Record



If you need help accessing this or any other Highways England information, please call **0300 123 5000** and we will help you.



© Crown copyright 2019.

You may re-use this information (not including logos) free of charge in any format or medium, under the terms of the Open Government Licence. To view this licence:

visit [www.nationalarchives.gov.uk/doc/open-government-licence/](http://www.nationalarchives.gov.uk/doc/open-government-licence/)

write to the **Information Policy Team, The National Archives, Kew, London TW9 4DU**, or email [psi@nationalarchives.gsi.gov.uk](mailto:psi@nationalarchives.gsi.gov.uk).

Mapping (where present): © Crown copyright and database rights 2019 OS 100030649. You are permitted to use this data solely to enable you to respond to, or interact with, the organisation that provided you with the data. You are not permitted to copy, sub-licence, distribute or sell any of this data to third parties in any form.

This document is also available on our website at [www.highwaysengland.co.uk](http://www.highwaysengland.co.uk)

For an accessible version of this publication please call **0300 123 5000** and we will help you.

If you have any enquiries about this publication email [info@highwaysengland.co.uk](mailto:info@highwaysengland.co.uk) or call **0300 123 5000**\*. Please quote the Highways England publications code **PR42/19**

Highways England creative job number GFD19\_0101

\*Calls to 03 numbers cost no more than a national rate call to an 01 or 02 number and must count towards any inclusive minutes in the same way as 01 and 02 calls.

These rules apply to calls from any type of line including mobile, BT, other fixed line or payphone. Calls may be recorded or monitored.

Printed on paper from well-managed forests and other controlled sources when issued directly by Highways England.

Registered office Bridge House, 1 Walnut Tree Close, Guildford GU1 4LZ

Highways England Company Limited registered in England and Wales number 09346363