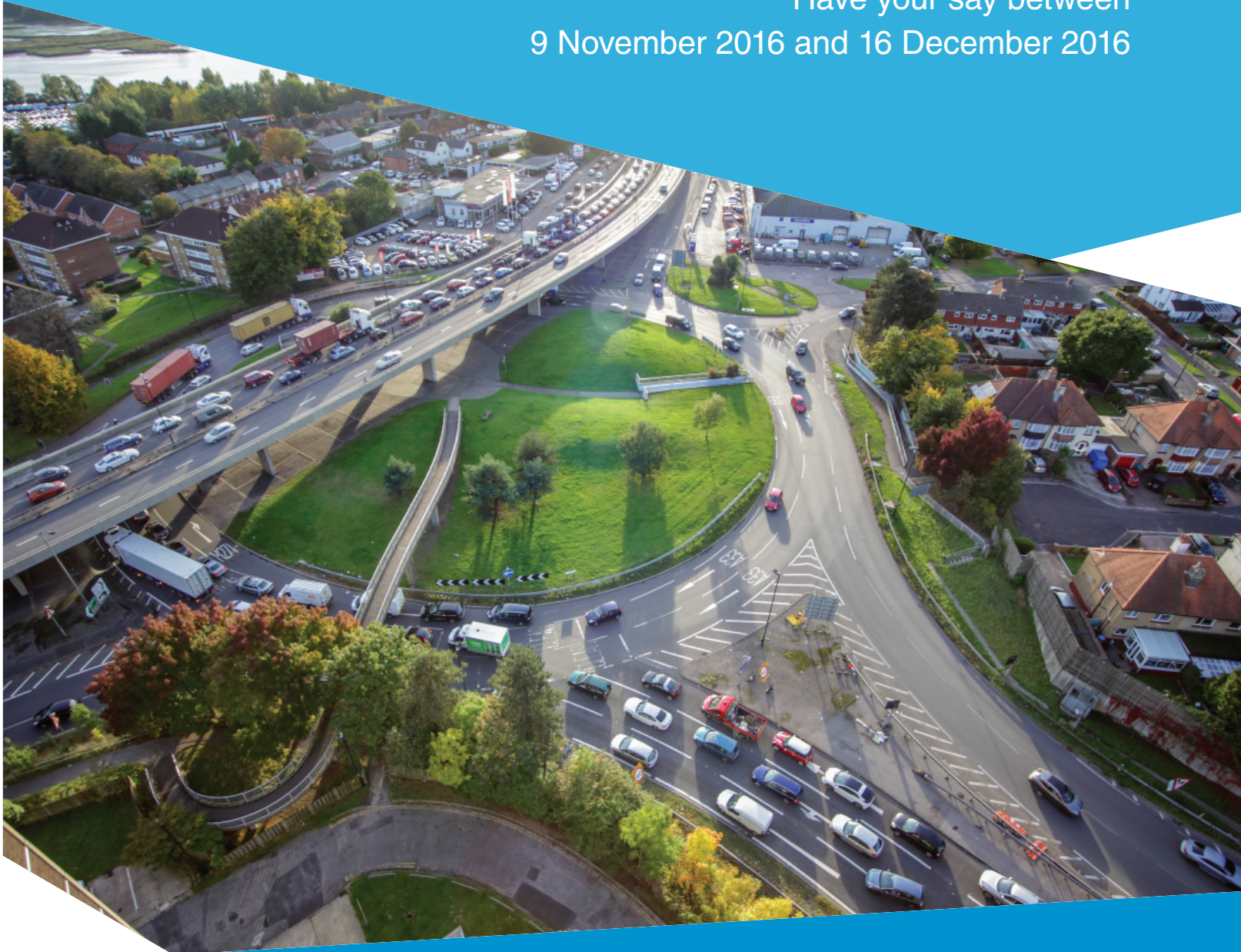


# M271/A33/A35 Redbridge Roundabout Improvement scheme

Have your say between  
9 November 2016 and 16 December 2016



## About us

Highways England is the government company responsible for operating and maintaining England's major A roads and motorways. Formerly known as the Highways Agency, we are also responsible for delivering improvements to the existing strategic road network.

## Redbridge Roundabout

Redbridge Roundabout is situated to the west of Southampton City at the intersection of M271, A33 and A35. It is a key gateway on the route into Southampton City Centre and the Port of Southampton from the west.

## Need for the scheme

The Port of Southampton is the second busiest in the country and is very important to Southampton and the UK economy. Substantial levels of freight and cruise passengers travel in and out every day onto the motorway network. Maintaining a well-functioning transport network is vital to the competitiveness of the port and the continued development and success of Southampton. A congested, unreliable road network with poor journey times has an environmental impact and could jeopardise growth and job creation.

## Current situation

- The east-west traffic between A33 and A35 travels on a flyover above the roundabout, whilst the main routes for the M271 are via Redbridge roundabout.



- Congestion, particularly during the afternoon peak, severely restricts traffic movements between Southampton and the M271 and queues back into the city centre. Queuing from A35 westbound also impacts on the roundabout.
- This divides the local communities, creating an obstacle for people who want to walk or cycle between different areas.

## Aims of scheme improvement

We aim to deliver improvements to:

- Support economic growth at a local and regional level by improving strategic access into city of Southampton.
- Provide a safe and serviceable network by improving safety and environment for non-motorised users.
- Deliver a more free-flowing network by relieving traffic congestion and improving capacity and journey times.
- Improve the environment through public realm improvements and landscaping and controlling road traffic noise through free-flowing traffic and low noise surfacing.

## Scheme design

We have looked at a number of options to achieve the aims of the scheme, which include:

- Reducing the number of traffic signals.

- Providing a 'free flow' lane from M271 southbound to A33 eastbound towards Southampton – so traffic won't need to stop at the roundabout.
- Removing the bus lane traffic signals from A33 westbound whilst keeping the bus lane and improving the bus stops.

Option 1, our initial design for a 'hamburger' style roundabout, providing a direct link for the traffic going from the A33 to M271 northbound, was **rejected**. This is because the existing subways and footbridge would need to be demolished and replaced by Toucan crossings which are less safe for pedestrians and cyclists and potentially cause delays on other arms of the roundabout.

We now have developed an Option 2 for further consideration. It proposes:

- 4 lanes to the south side of the roundabout
- 3 lanes to the east side of the roundabout
- Removal of the Toucan crossings across the A33 sliproads to the east of the roundabout
- Improving the subways and footbridge, including modifications to approach ramps, so that they are better, safe and attractive places for pedestrians and cyclists
- Maintain the existing shared pedestrian and cycle route to the south of the roundabout.

## Additional features

The scheme could be further enhanced, depending on funding availability and the results of further traffic modelling with:

- Wider traffic lanes (4m instead of 3.5m)
- 3 lanes also provided to western side of the roundabout
- Additional exit lane onto the M271.

## Impacts of proposed scheme

- More road space to reduce congestion and improve journey reliability
- Better environment to make walking and cycling easier, reduce noise and pollution.

## Have your say

Your views and feedback will help shape our proposal. You can:

- Visit our website:  
[www.highways.gov.uk/M271A35Redbridge](http://www.highways.gov.uk/M271A35Redbridge)
- See the plans in full and meet the project team:

Redbridge School  
Cuckmere Lane  
Southampton SO16 9RJ

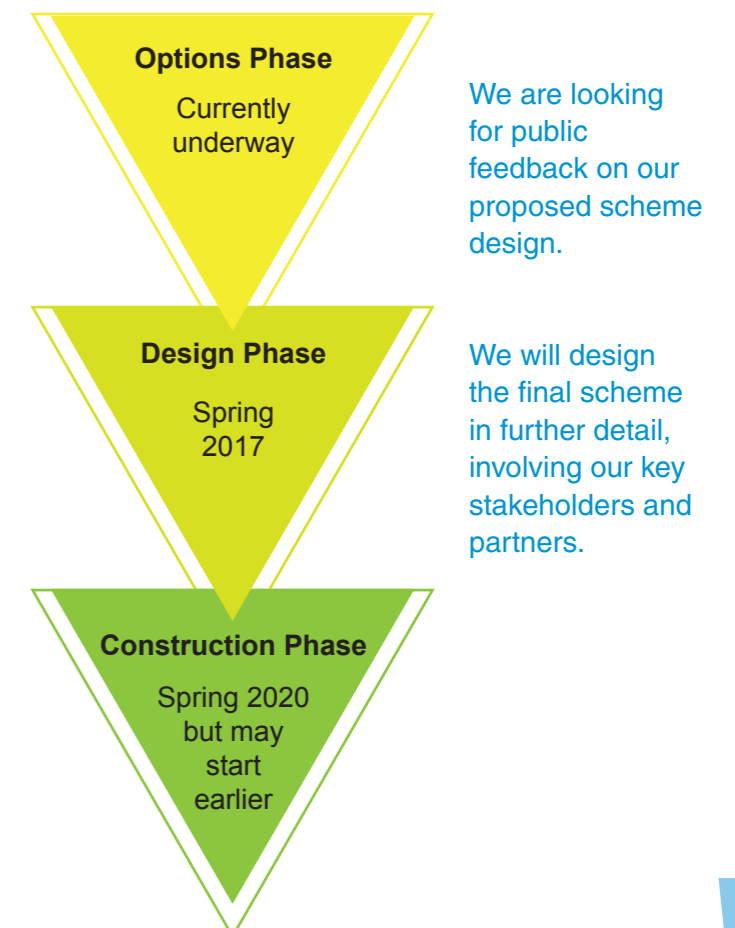
Friday 25 Nov 4:00pm - 8:00pm  
Saturday 26 Nov 10:00am - 4:00pm

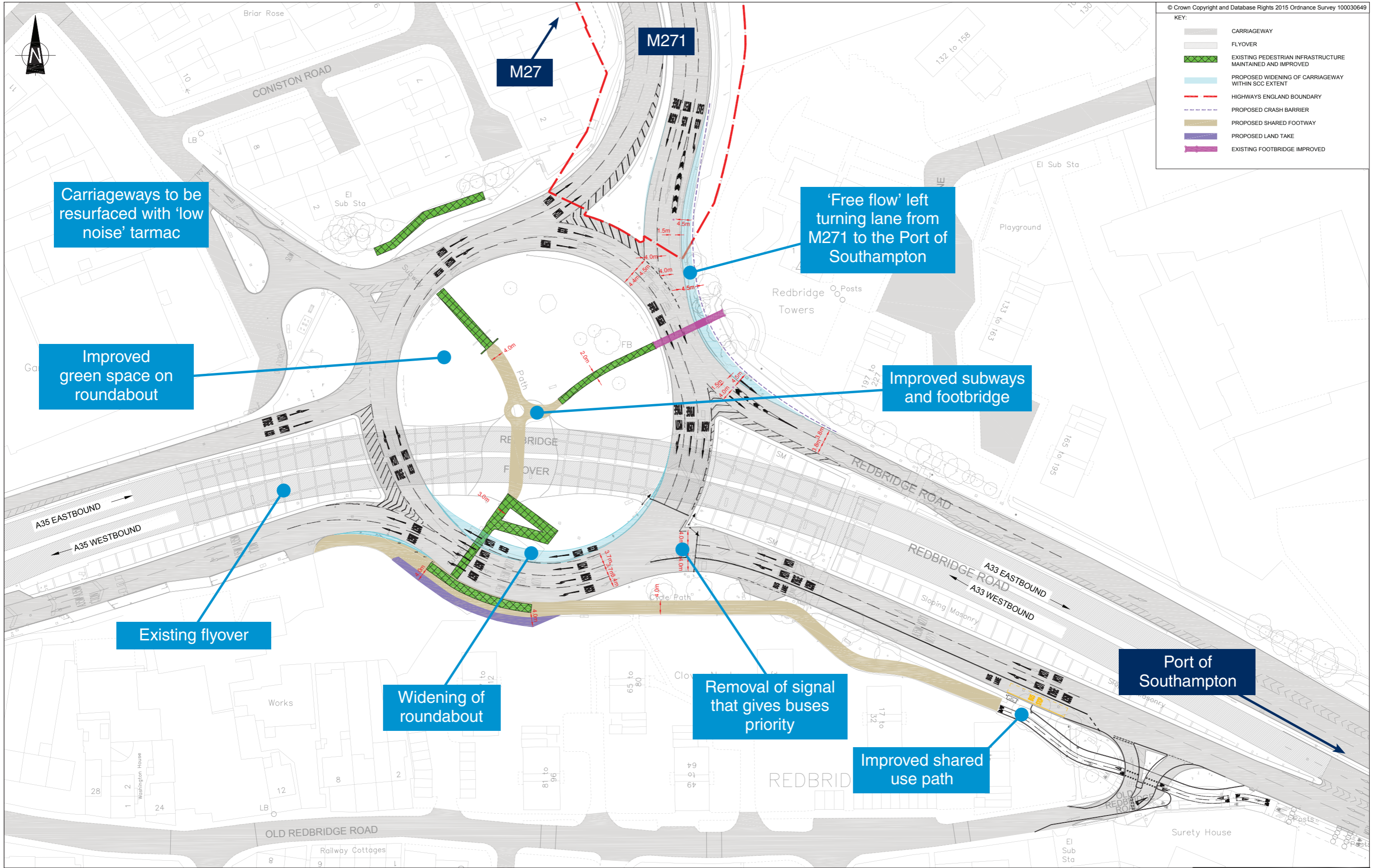
- Feedback forms will be available at the school events and also from the Civic Centre, Southampton SO14 7LY.

All feedback needs to be received by 16 December 2016.

Your feedback and comments must be received before the consultation deadline of 16 December so we can consider your response.

## Scheme timeline







## M271 Redbridge roundabout feedback form

We value your views on this proposal to help reach a decision which benefits local communities, motorists, pedestrians and cyclists alike. The closing date for responses is **14 December 2016**.

You can give your feedback to us:

**Online:** A link to an online feedback form is on [www.highways.gov.uk/M271/A35REDBRIDGE](http://www.highways.gov.uk/M271/A35REDBRIDGE)

**By post:** You can send this feedback form back to us using the freepost envelope provided.

**Q1.** In an average week, how often do you use Redbridge Roundabout by the following types of transport?

(Please tick one answer in each row applicable)

	5 days or more	3-4 days	1-2 days	Less than once a week	Never
By car					
Bicycle					
On foot					
Motorcycle					

**Q2.** How would you describe your experience of using Redbridge Roundabout?

(Please tick one answer in each row applicable)

	Very satisfied	Fairly satisfied	Neutral	Fairly dissatisfied	Very dissatisfied
By car					
Bicycle					
On foot					
Taxi					
Motorcycle					

**Q3.** Do you think that any of the following CURRENTLY apply to Redbridge Roundabout?

(Please tick all that apply)

In my experience Redbridge Roundabout is often congested	
Redbridge Roundabout feels too small and constrained when I am using it	
I rarely experience any congestion or delays when using Redbridge Roundabout	
The footways and paths around the roundabout are unpleasant to use	
Redbridge Roundabout acts as a barrier between communities on either side of it	
I find the footpaths under and over the Redbridge Roundabout pleasant to use	
I feel unsafe when I am using Redbridge Roundabout	

**Q4.** Option 2 is the scheme we propose to take forward. Do you agree that this proposal will achieve our scheme objectives?

Scheme objectives	Strongly agree	Agree	Don't know	Disagree	Strongly disagree
Support economic growth					
Improve safety					
Reduce congestion					
Improve the environment					

**Q5.** How did you find out about the Redbridge Roundabout upgrade scheme?

Received a letter	
Highways England website	
Southampton City Council website	
Local radio or television news	
Local newspaper	
Online media (news websites)	
Poster	
Other (please specify below)	

**Q6.** Have you found this brochure helpful in answering your questions?

Yes	To some extent	No	Did not read

**Q7.** Have you found our public exhibitions helpful in answering your questions?

Yes	To some extent	No	Did not attend

**Q8.** Do you have any additional comments about the improvement scheme that you would like us to consider?

To ensure that we are meeting our quality and diversity guidelines, please fill in the following section of the questionnaire. This information will only be used by Highways England to monitor its effectiveness at consulting with the community. This information will not be used for any other purpose, and individuals will not be identified when the results are published.

**Q9.** Please tell us your age

Under 18	18-24	25-34	35-44	45-54	55-64	Over 65

**Q10.** Gender

Male	Female	Prefer not to say



**Q11.** Please let us know which group you identify yourself as:

White British (English, Welsh, Scottish)	
Irish	
Other white	
Asian or British Asian	
Black or black British	
Mixed race	
Other (please specify)	

**Q12.** Please let us know which group you identify yourself as:

Christian (all denominations)	
Muslim	
Jewish	
Hindu	
Buddhist	
No religion/Atheist/Agnostic	
Other (please specify)	

**Q13.** Do you consider yourself to have a disability?

Prefer not to say	
No	
Yes (please specify if you wish to do so)	



If you need help accessing this or any other Highways England information, please call **0300 123 5000** and we will help you.

## Contact us

If you have any queries relating to the M271/A33/A35 Redbridge roundabout improvement scheme, please do not hesitate to contact us at:

**info@highways.gov.uk**

For the latest information and updates, please visit our website:

**www.highways.gov.uk/M271A35redbridge**

This document is also available on our website at:

**www.gov.uk/highways**

If you have any queries relating to Highways England, you should contact the information line on:

**0300 123 5000**

or alternatively email:

**info@highwaysengland.co.uk**

© Crown copyright 2016.

You may re-use this information (not including logos) free of charge in any format or medium, under the terms of the Open Government Licence. To view this licence: visit [www.nationalarchives.gov.uk/doc/open-government-licence](http://www.nationalarchives.gov.uk/doc/open-government-licence), write to the **Information Policy Team, The National Archives, Kew, London TW9 4DU**, or email [psi@nationalarchives.gsi.gov.uk](mailto:psi@nationalarchives.gsi.gov.uk)

This document is also available on our website at [www.gov.uk/highways](http://www.gov.uk/highways)

If you have any enquiries about this publication email [info@highwaysengland.co.uk](mailto:info@highwaysengland.co.uk) or call **0300 123 5000\***. Please quote the Highways England publications code **PR102/16**

Highways England, Creative S160355

\*Calls to 03 numbers cost no more than a national rate call to an 01 or 02 number and must count towards any inclusive minutes in the same way as 01 and 02 calls. These rules apply to calls from any type of line including mobile, BT, other fixed line or payphone. Calls may be recorded or monitored.

Printed on paper from well-managed forests and other controlled sources.

Registered office Bridge House, 1 Walnut Tree Close, Guildford GU1 4LZ

Highways England Company Limited registered in England and Wales number 09346363



Working in partnership with Highways England