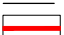





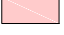



| | | | | | | |
|-----|--------|-----------|---------------------|-------|---------|----------|
| 01 | S2 | 21.03.18 | PEIR | JN | KB | DH |
| Rev | Status | Rev. Date | Purpose of revision | Drawn | Checked | Approved |

KEY:

| | | | | | |
|---|--------------------|---|-----------------|---|------------------------------|
|  | Draft Order Limits |  | Bedrock A□ifers |  | Superficial A□ifers |
|  | 500m Study Area |  | Principal |  | Secondary A |
| | |  | Secondary B |  | Secondary (Undifferentiated) |

Crown copyright and database rights 2016 OS 100030649

Client




Registered office: 22 Carisle Place, London, SW1P 1JA
 Coordinating office: 5th Floor, 401 Finsbury Street, Birmingham, B3 6GA
 Tel: 44 (0)1925 800700
 www.arcadis.com

Project: **A585 WINDY HARBOUR TO SKIPPOOL IMPROVEMENT SCHEME**

Drawing title: **ROAD DRAINAGE AND THE WATER ENVIRONMENT: A□IFERS**

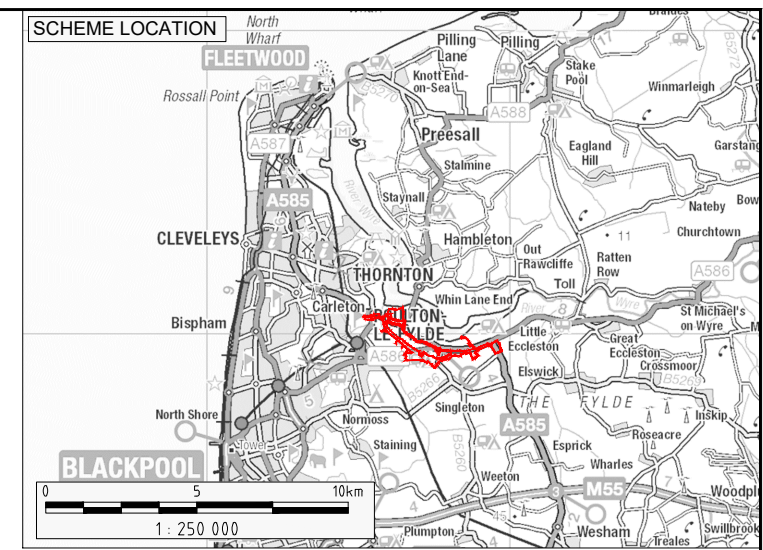
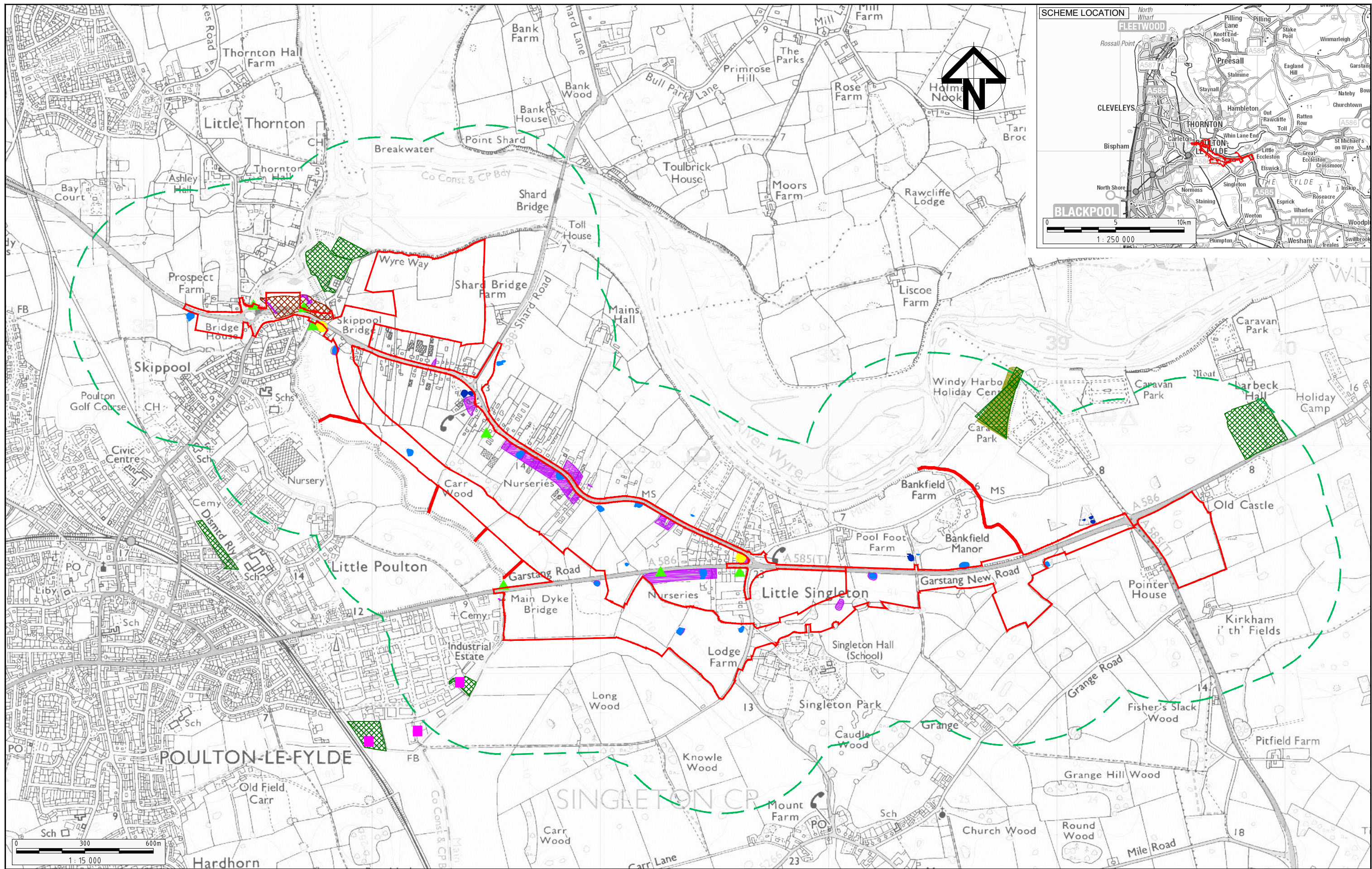
PRELIMINARY ENVIRONMENTAL INFORMATION REPORT

Scale: 1:30 000 | Date: 21.03.18

Drawn By: J.NORMAN
 Checked By: K.BURROWS
 Approved By: D.HOUD

Project No: UA009921 | Original Size: A3

Drawing number: **FIGURE 11.2** | Rev: 01



| KEY: | | Draft Order Limits | | Potentially Contaminative Land Use | | Historic Tank Locations | | Authorised Landfill Site (approx) | | Historic Landfill Site | |
|------|--------------------|--------------------|------------------------------------|------------------------------------|-------------------------|-------------------------|-----------------------------------|-----------------------------------|------------------------|------------------------|--------------------------|
| | Draft Order Limits | | Potentially Contaminative Land Use | | Historic Tank Locations | | Authorised Landfill Site (approx) | | Historic Landfill Site | | Authorised Landfill Site |
| | 500m Study Area | | Infilled Ponds | | Unknown Filled Ground | | Discharge Consent | | Unknown Filled Ground | | Artificial Made Ground |
| | Ponds | | Artificial Made Ground | | Artificial Made Ground | | Artificial Made Ground | | Artificial Made Ground | | Artificial Made Ground |

Client

Registered office:
Manning House
22 Canine Place
London
SW1P 1JA

Coordinating office:
5th Floor 451 Finsbury Street
Bishopsgate
London, W3 6GA
Tel: 44 (0)1925 800700

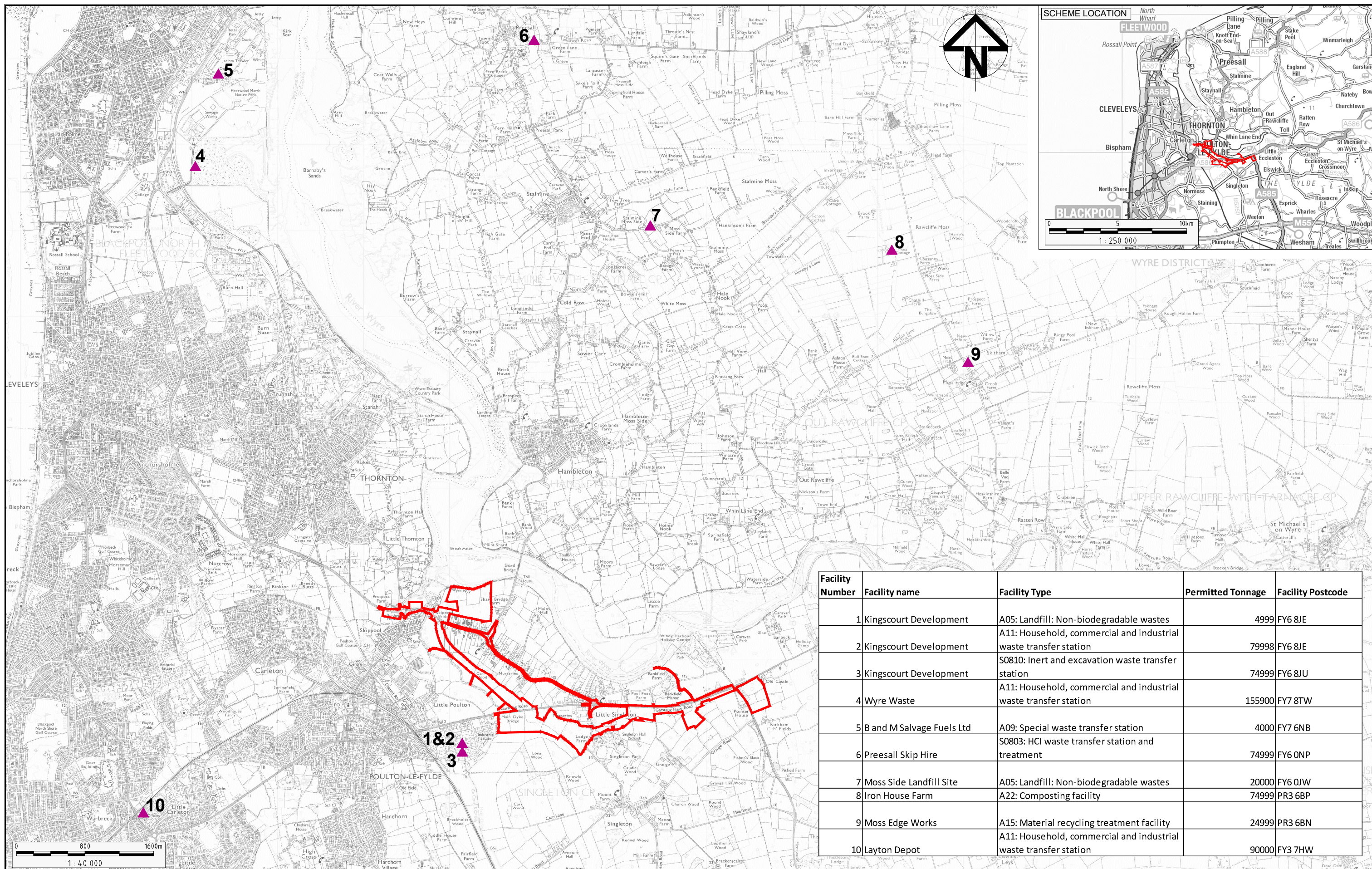
Project: A585 WINDY HARBOUR TO SKIPPOOL IMPROVEMENT SCHEME

Drawing title: GEOLOGY AND CONTAMINATED LAND: ENVIRONMENTAL FEATURES ASSOCIATED WITH GEOLOGY AND CONTAMINATED LAND

| PEIR REPORT | |
|-----------------------------|-----------------------|
| Scale: 1:15 000 | Date: 21.03.18 |
| Drawn By: J.NORMAN | Checked By: K.BURROWS |
| Approved By: D.HOUD | |
| Project No: UA008849 | Original Size: A3 |
| Drawing number: FIGURE 12.1 | Rev: 01 |

| Rev | Status | Rev. Date | Purpose of revision | Drawn | Checked | Approved |
|-----|--------|-----------|---------------------|-------|---------|----------|
| 01 | S2 | 21.03.18 | PEIR SCOPING | JN | KB | DH |

Crown copyright and database rights 2016 OS 100030649



| Facility Number | Facility name | Facility Type | Permitted Tonnage | Facility Postcode |
|-----------------|---------------------------|--|-------------------|-------------------|
| 1 | Kingscourt Development | A05: Landfill: Non-biodegradable wastes | 4999 | FY6 8JE |
| 2 | Kingscourt Development | A11: Household, commercial and industrial waste transfer station | 79998 | FY6 8JE |
| 3 | Kingscourt Development | S0810: Inert and excavation waste transfer station | 74999 | FY6 8JU |
| 4 | Wyre Waste | A11: Household, commercial and industrial waste transfer station | 155900 | FY7 8TW |
| 5 | B and M Salvage Fuels Ltd | A09: Special waste transfer station | 4000 | FY7 6NB |
| 6 | Preesall Skip Hire | S0803: HCI waste transfer station and treatment | 74999 | FY6 0NP |
| 7 | Moss Side Landfill Site | A05: Landfill: Non-biodegradable wastes | 20000 | FY6 0JW |
| 8 | Iron House Farm | A22: Composting facility | 74999 | PR3 6BP |
| 9 | Moss Edge Works | A15: Material recycling treatment facility | 24999 | PR3 6BN |
| 10 | Layton Depot | A11: Household, commercial and industrial waste transfer station | 90000 | FY3 7HW |

KEY:
 Draft Order Limits
 Waste Management Facilities

| Rev | Status | Rev. Date | Purpose of revision | Drawn | Checked | Approved |
|-----|--------|-----------|---------------------|-------|---------|----------|
| 01 | S2 | 21.03.18 | PEIR SCOPING | JN | KB | DH |

Crown copyright and database rights 2016 OS 100030649

Client **highways england**

ARCADIS

Registered office: Manning House, 22 Carisle Place, London, SW1P 1JA
 Coordinating office: 5th Floor 401 Fenchurch Street, Bishops Cleeve, Nottingham, NG3 6GA
 Tel: 44 (0)1925 800700
www.arcadis.com

Project **A585 WINDY HARBOUR TO SKIPPOOL IMPROVEMENT SCHEME**

Drawing title **MATERIALS: WASTE MANAGEMENT FACILITIES**

PEIR REPORT

Scale **1:40 000** Date **21.03.18**

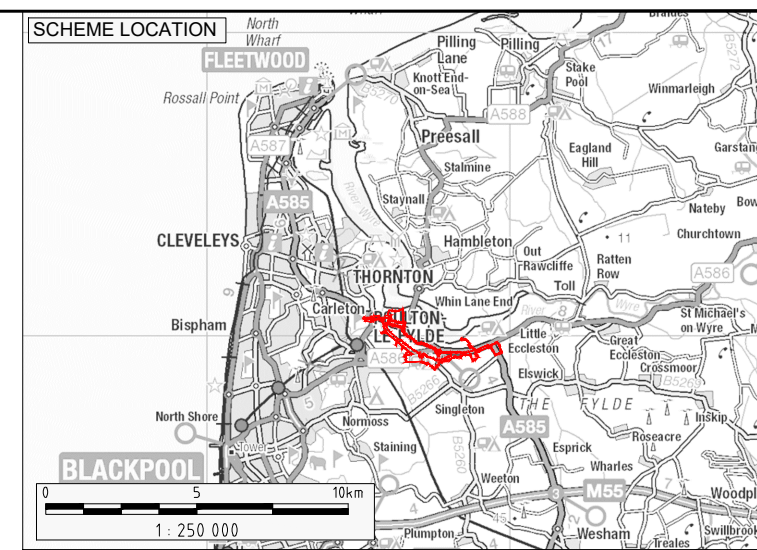
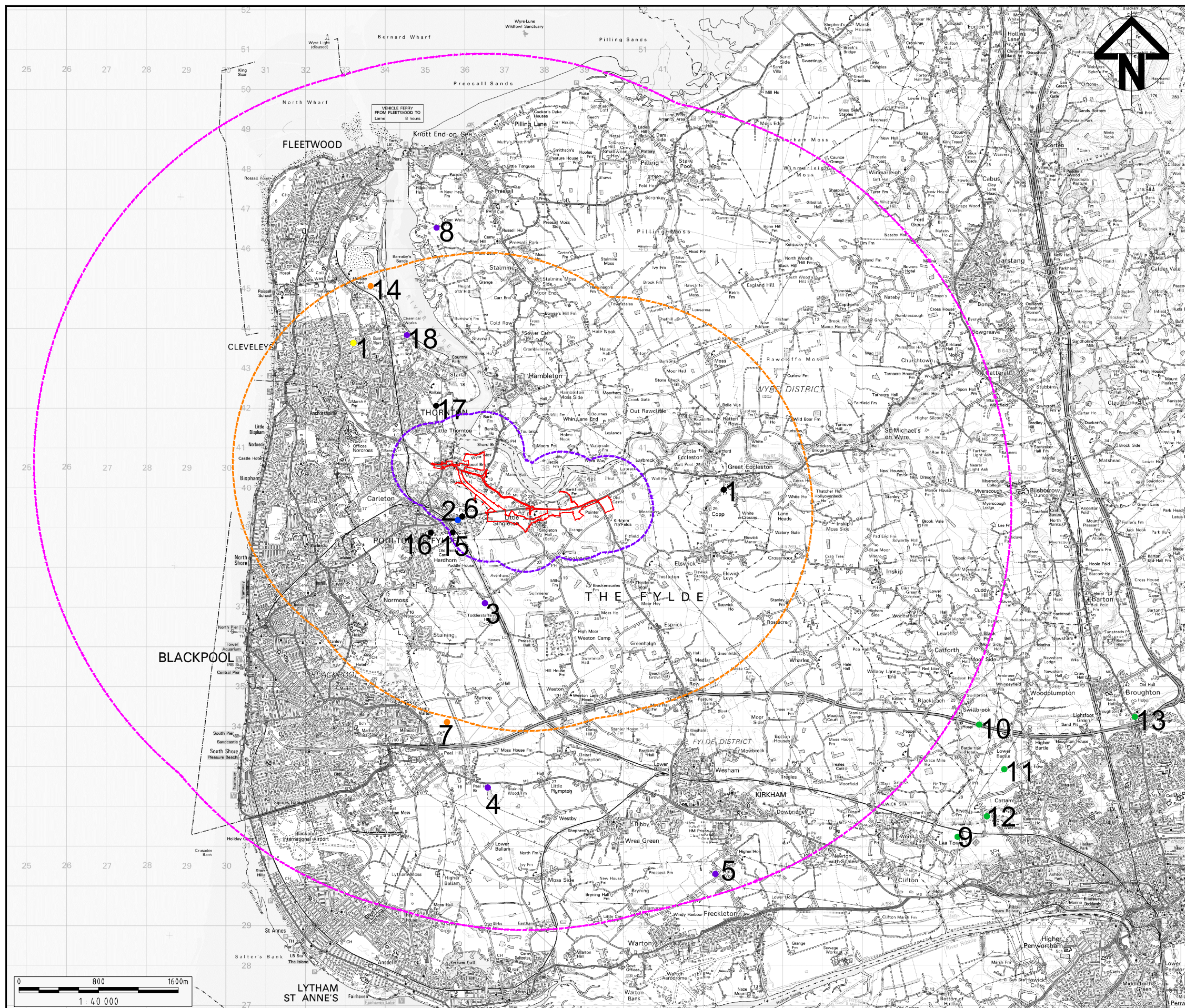
Drawn By **J.NORMAN**

Checked By **K.BURROWS**

Approved By **D.HOUD**

Project No. **UA008849** Original Size **A3**

Drawing number **FIGURE 14.1** Rev **01**



| ID | Description |
|----|---|
| 1 | Outline application for residential development of up to 90 dwellings |
| 2 | Demolition of existing buildings and erection of a retail store |
| 3 | Installation of a 4.5MW solar farm and associated infrastructure |
| 4 | Installation of a 4.9MW solar farm and associated infrastructure |
| 5 | Construction of a solar development to generate renewable electricity |
| 6 | Residential development comprising 519 dwellings |
| 7 | Outline application for development of up to 1400 residential dwellings and other mixed uses |
| 8 | Underground gas storage facility |
| 9 | Preston Western Distributor (PWD) connecting the M55 via a link road south to the A583 |
| 10 | Associated with the PWD road: M55 Junction 2 proposals. The PWD will connect to the M55 in the north via a new Junction 2 |
| 11 | Associated with the PWD road: East West link Road will allow the new PWD to connect with Preston via an East to West access road |
| 12 | Associated with the PWD road: Will allow the PWD to connect with Cottam Way and provide a link for a new Cottam Park Rail Station |
| 13 | Renewal planning permission for the construction of the Broughton Bypass and improvements to existing highways |
| 14 | Planning allocation for mixed use development to be delivered over the next 15 - 20 years |
| 15 | Outline application for the erection of up to 130 dwellings |
| 16 | Reserved matters application for the erection of 160 dwellings with associated works |
| 17 | Outline application for the erection of up to 108 no. dwellings |
| 18 | Up to 900MW Megawatt electrical (MWE) Power Plant |

| Rev | Status | Rev. Date | Purpose of revision | Drawn | Checked | Approved |
|-----|--------|-----------|---------------------|-------|---------|----------|
| 01 | S2 | 21.03.18 | PEIR | JN | KB | DH |

KEY:

| | | |
|--------------------|----------------------|-------------|
| Draft Order Limits | Commercial | Highways |
| 1km Study Area | Community Facilities | Mixed Use |
| 5km Study Area | Energy | Residential |
| 10km Study Area | | |

Crown copyright and database rights 2016 OS 100030649

Client **highways england**

ARCADIS

Registered office: 22 Carisle Place, London, SW1P 1JA
 Coordinating office: 5th Floor 401 Finsbury Street, Richmond Park, Hampton, W3 6GA
 Tel: 44 (0)1925 800700
www.arcadis.com

Project **A585 WINDY HARBOUR TO SKIPPOOL IMPROVEMENT SCHEME**

Drawing title **CUMULATIVE EFFECTS: PLANNED PROJECTS**

PRELIMINARY ENVIRONMENTAL INFORMATION REPORT

Scale **1:15 000** Date **21.03.18**

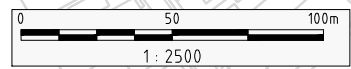
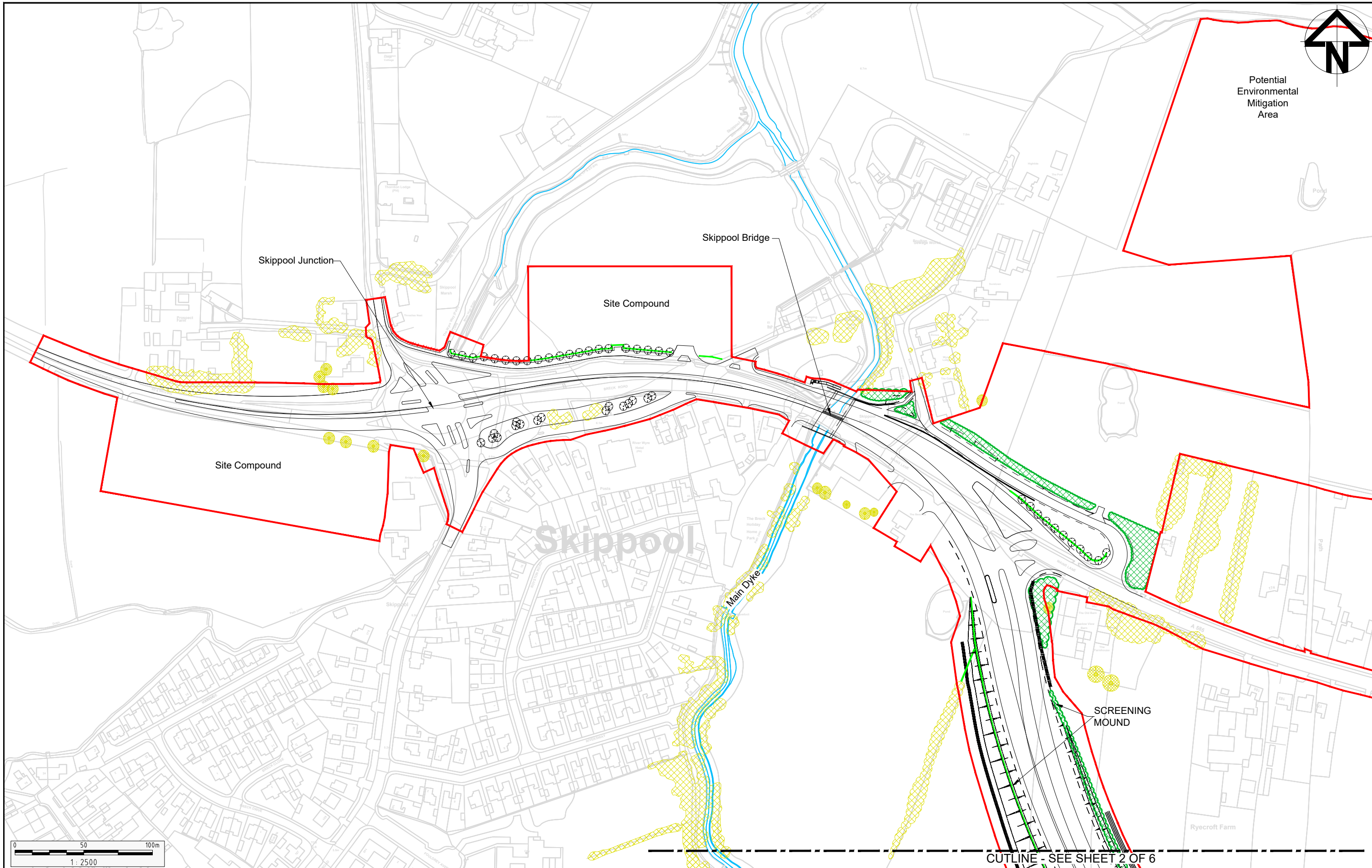
Drawn By **J.NORMAN**
 Checked By **K.BURROWS**
 Approved By **D.HOUD**

Project No. **UA009921** Original Size **A3**

Drawing number **FIGURE 15.1** Rev **01**



Potential Environmental Mitigation Area



| KEY: | | | |
|---------------------|-----------------------------------|-----------------------|------------|
| Draft Order Limits | Proposed Woodland Planting | 5m High False Cutting | Culverts |
| The Scheme | Proposed Individual Tree Planting | Noise Barrier | Footbridge |
| Existing Trees | Proposed Hedgerow Planting | Watercourse | |
| Existing Vegetation | Proposed Wildflower Planting | Wetland | |

Crown copyright and database rights 2016 OS 100030649

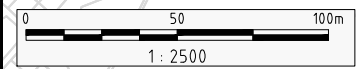
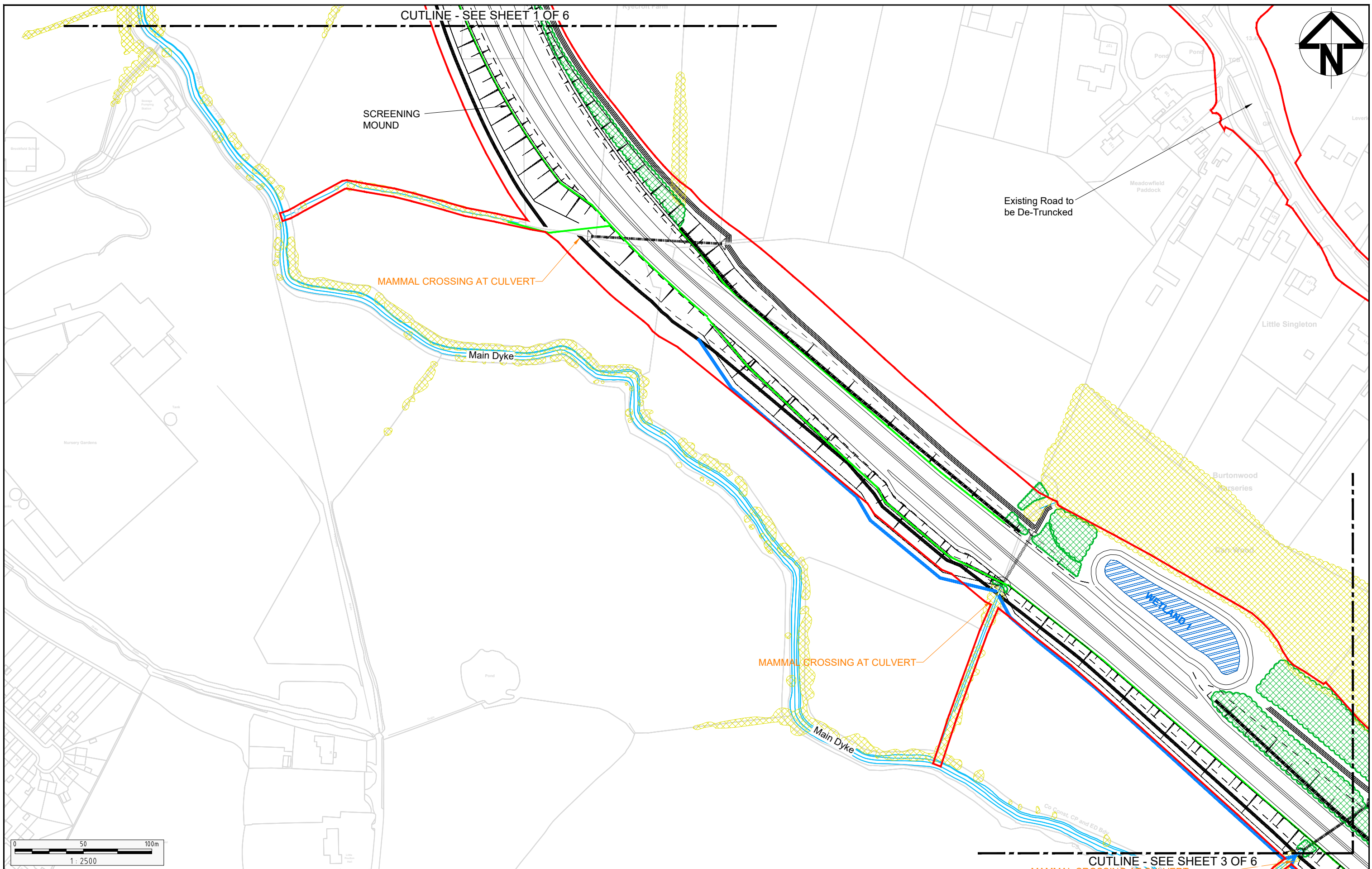
Client

Registered office: Stanning House, 22 Carleton Place, London SW1P 1JA
 Coordinating office: 5th Floor 401 Finsbury Street, Warrington, WA3 6GA
 Tel: 44 (0)1925 800700
 www.arcadis.com

| | | |
|---------------|---|--|
| Project | A585 WINDY HARBOUR TO SKIPPOOL IMPROVEMENT SCHEME | |
| Drawing title | ENVIRONMENTAL MITIGATION SHEET 1 OF 6 | |

| | | |
|--|-------------|-----------------|
| PRELIMINARY ENVIRONMENTAL INFORMATION REPORT | | |
| Scale | 1:2500 | Date - 21.03.18 |
| Drawn By | R.GRUBB | |
| Checked By | K.BURROWS | |
| Approved By | D.HOUD | |
| Project No. | UA009921 | Original Size |
| Drawing number | FIGURE 16.1 | Rev |
| | | 01 |

| Rev | Status | Rev. Date | Purpose of revision | Drawn | Checkd | Apprv'd |
|-----|--------|-----------|---------------------|-------|--------|---------|
| 01 | S2 | 21.03.18 | PEIR | RG | KB | DH |



| Rev | Status | Rev. Date | Purpose of revision | Drawn | Checked | Appr'd |
|-----|--------|-----------|---------------------|-------|---------|--------|
| 01 | S2 | 21.03.18 | PEIR | RG | KB | DH |

| KEY: | | | | | | | |
|------|---------------------|--|-----------------------------------|--|-----------------------|--|------------|
| | Draft Order Limits | | Proposed Woodland Planting | | 5m High False Cutting | | Culverts |
| | The Scheme | | Proposed Individual Tree Planting | | Noise Barrier | | Footbridge |
| | Existing Trees | | Proposed Hedgerow Planting | | Watercourse | | |
| | Existing Vegetation | | Proposed Wildflower Planting | | Wetland | | |

Crown copyright and database rights 2016 OS 100030649

Client

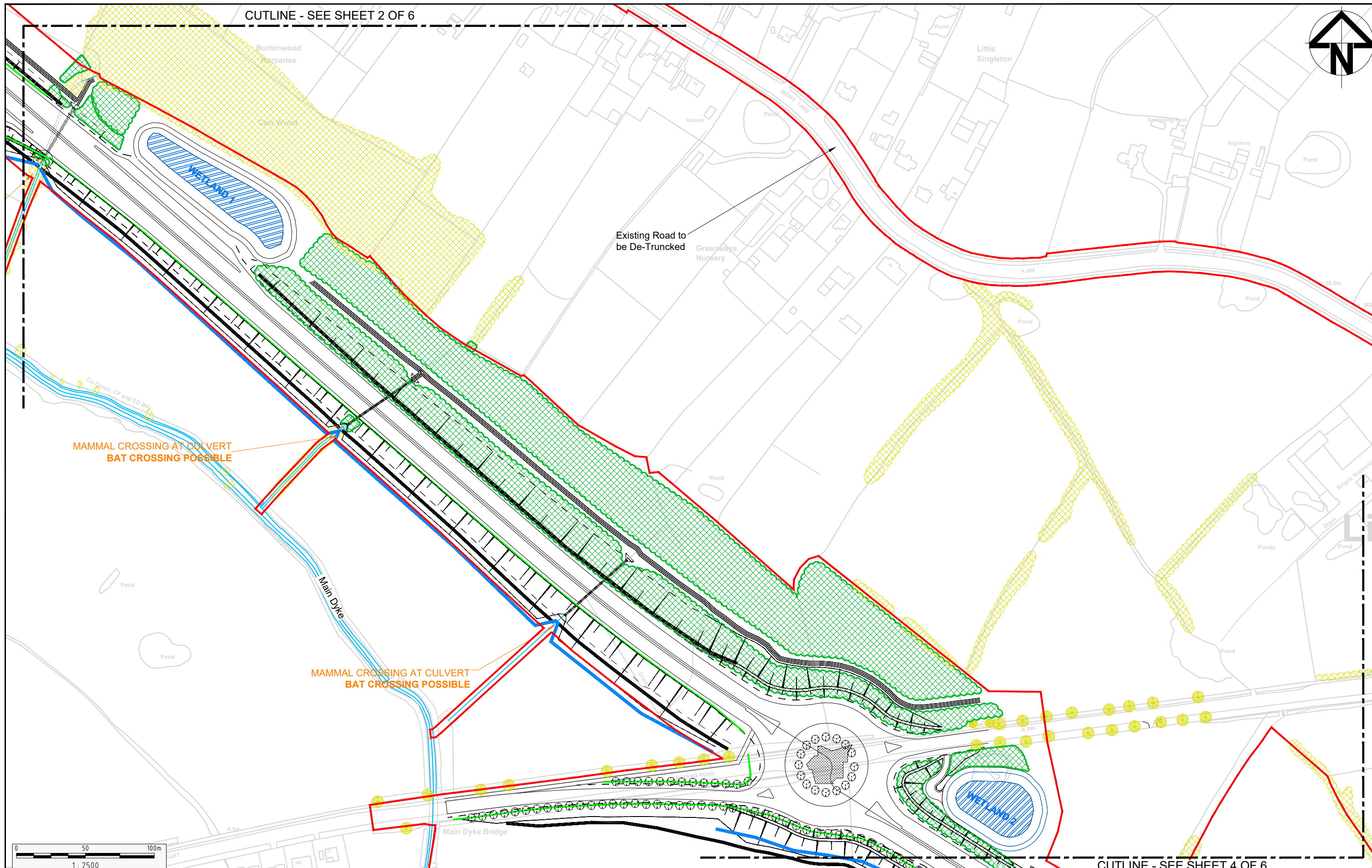
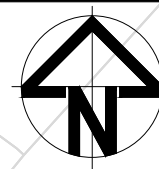
Registered office: 22 Carfax Place, London, SW1P 1JA
 Coordinating office: 5th Floor 401 Finsbury Street, Warrington, WA3 6GA
 Tel: 44 (0)1925 800700
 www.arcadis.com

Project: A585 WINDY HARBOUR TO SKIPPOOL IMPROVEMENT SCHEME

Drawing title: ENVIRONMENTAL MITIGATION SHEET 2 OF 6

| PRELIMINARY ENVIRONMENTAL INFORMATION REPORT | | |
|--|-------------|-----------------|
| Scale | 1:2500 | Date - 21.03.18 |
| Drawn By | R.GRUBB | |
| Checked By | K.BURROWS | |
| Approved By | D.HOUD | |
| Project No. | UA009921 | Original Size |
| Drawing number | FIGURE 16.1 | Rev |
| | | 01 |

CUTLINE - SEE SHEET 2 OF 6



CUTLINE - SEE SHEET 4 OF 6

| Rev | Status | Rev. Date | Purpose of revision | Drawn | Checked | Apprv'd |
|-----|--------|-----------|---------------------|-------|---------|---------|
| 01 | S2 | 21.03.18 | PEIR | RG | KB | DH |

KEY:

| | | | |
|---------------------|-----------------------------------|-----------------------|------------|
| Draft Order Limits | Proposed Woodland Planting | 5m High False Cutting | Culverts |
| The Scheme | Proposed Individual Tree Planting | Noise Barrier | Footbridge |
| Existing Trees | Proposed Hedgerow Planting | Watercourse | |
| Existing Vegetation | Proposed Wildflower Planting | Wetland | |

Crown copyright and database rights 2016 OS 100030649

Client

Registered office: 5th Floor 401 Finsbury Street, London, SW1P 1JA
 Coordinating office: 5th Floor 401 Finsbury Street, Warrington, WA3 6GA
 Tel: 44 (0)1925 800700
 www.arcadis.com

Project: A585 WINDY HARBOUR TO SKIPPOOL IMPROVEMENT SCHEME

Drawing title: ENVIRONMENTAL MITIGATION SHEET 3 OF 6

PRELIMINARY ENVIRONMENTAL INFORMATION REPORT

Scale: 1:2500 Date: 21.03.18

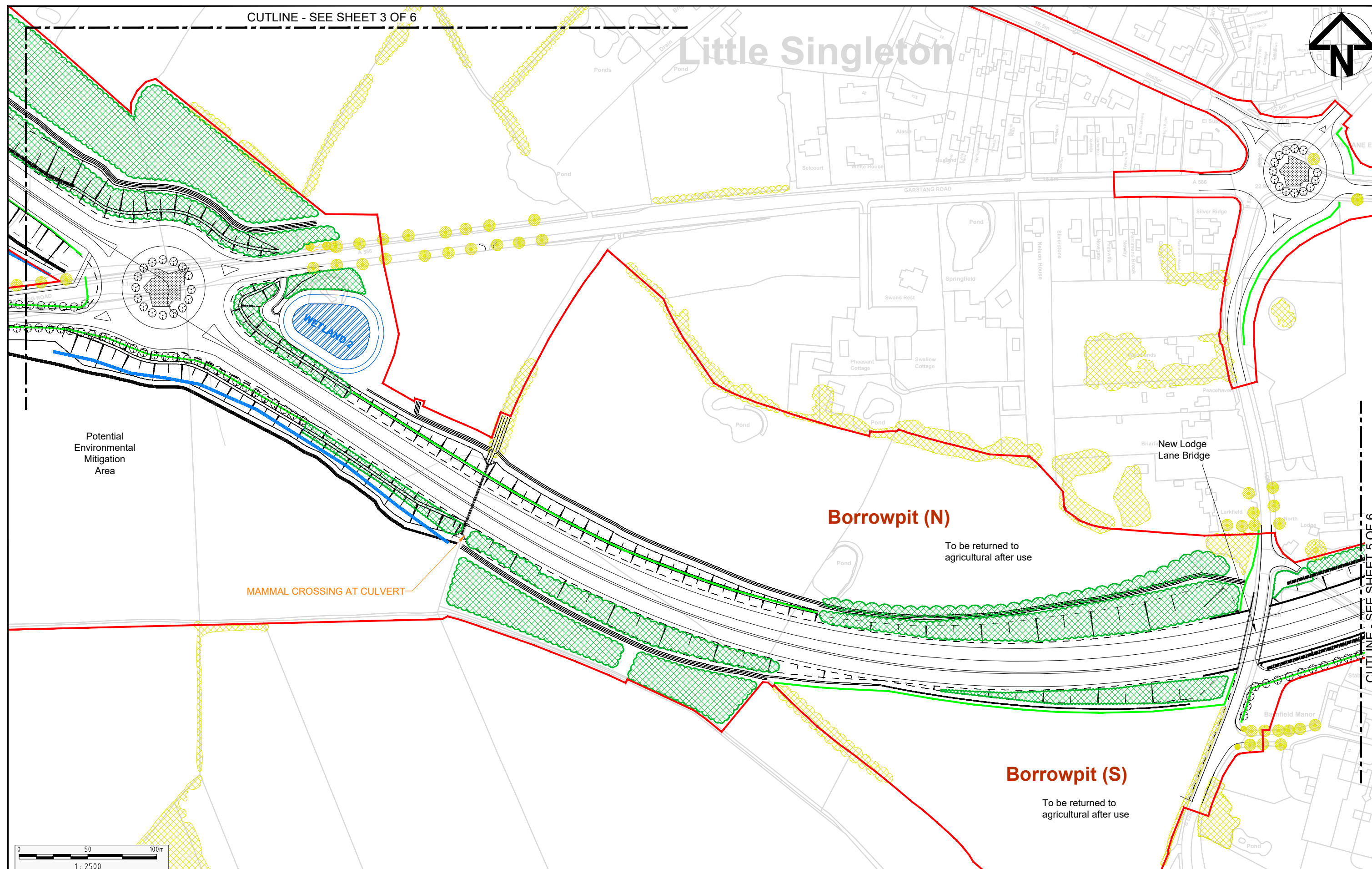
Drawn By: R.GRUBB
 Checked By: K.BURROWS
 Approved By: D.HOUD

Project No: UA009921 Original Size: A3

Drawing number: FIGURE 16.1 Rev: 01

CUTLINE - SEE SHEET 3 OF 6

Little Singleton



Potential Environmental Mitigation Area

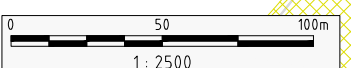
MAMMAL CROSSING AT CULVERT

Borrowpit (N)

To be returned to agricultural after use

Borrowpit (S)

To be returned to agricultural after use



KEY:

| | | | |
|---------------------|-----------------------------------|-----------------------|------------|
| Draft Order Limits | Proposed Woodland Planting | 5m High False Cutting | Culverts |
| The Scheme | Proposed Individual Tree Planting | Noise Barrier | Footbridge |
| Existing Trees | Proposed Hedgerow Planting | Watercourse | |
| Existing Vegetation | Proposed Wildflower Planting | Wetland | |

| Rev | Status | Rev. Date | Purpose of revision | Drawn | Checked | Appr'd |
|-----|--------|-----------|---------------------|-------|---------|--------|
| 01 | S2 | 21.03.18 | PEIR | RG | KB | DH |

Crown copyright and database rights 2016 OS 100030649

Client

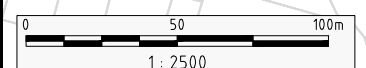
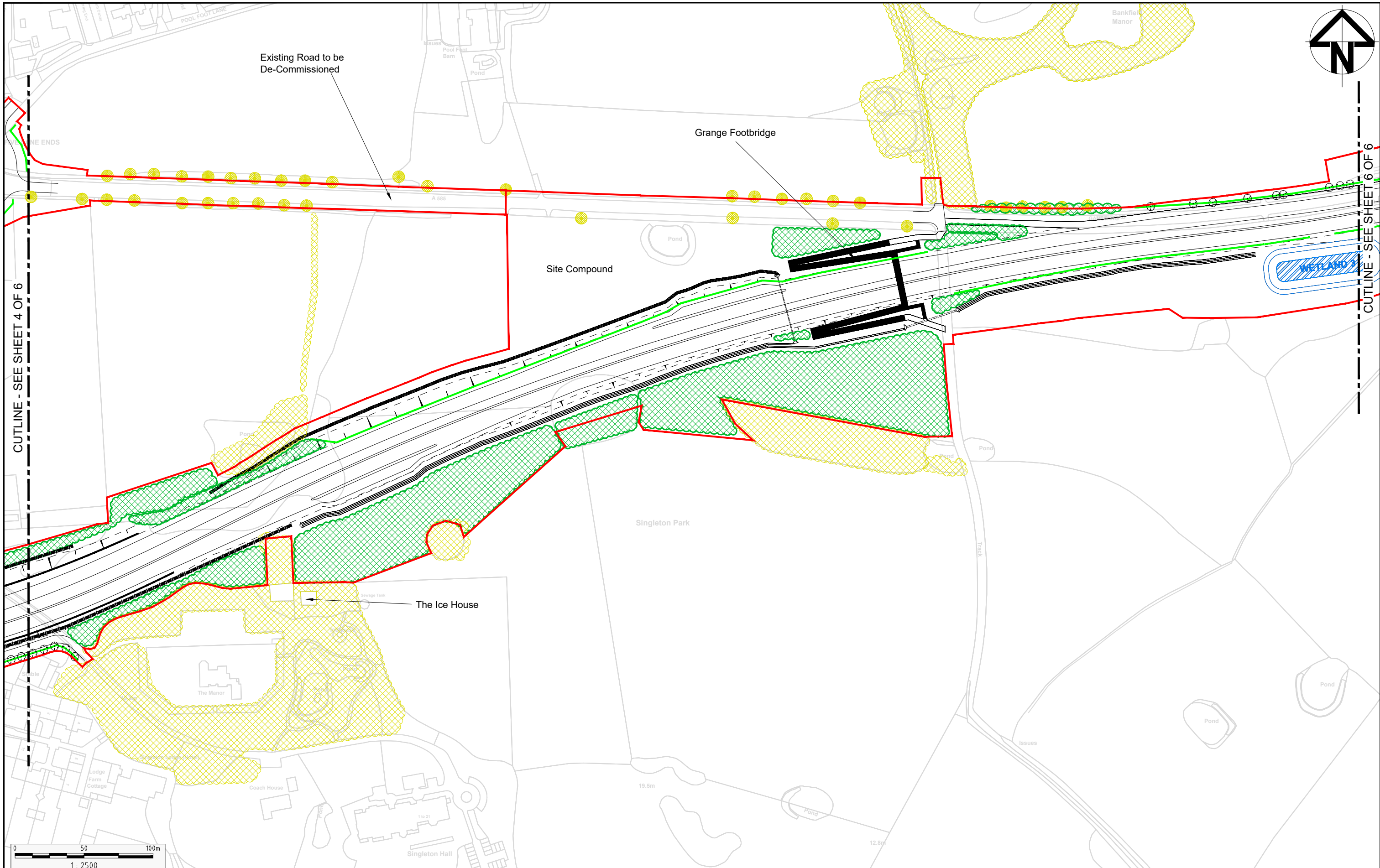
Registered office: Stanning House, 22 Carleton Place, London SW1P 1JA
 Coordinating office: 5th Floor 401 Finsbury Street, Warrington, WA3 6GA, Tel: 44 (0)1925 800700

Project: **A585 WINDY HARBOUR TO SKIPPOOL IMPROVEMENT SCHEME**

Drawing title: **ENVIRONMENTAL MITIGATION SHEET 4 OF 6**

| PRELIMINARY ENVIRONMENTAL INFORMATION REPORT | | | |
|--|---------|---------------|-------------|
| Scale | 1:2500 | Date | 21.03.18 |
| Drawn By | R.GRUBB | Checked By | K.BURROWS |
| Approved By | D.HOUD | Project No. | UA009921 |
| Original Size | A3 | Figure number | FIGURE 16.1 |
| Rev | 01 | | |

CUTLINE - SEE SHEET 5 OF 6



| KEY: | | | | | | | |
|------|---------------------|--|-----------------------------------|--|-----------------------|--|------------|
| | Draft Order Limits | | Proposed Woodland Planting | | 5m High False Cutting | | Culverts |
| | The Scheme | | Proposed Individual Tree Planting | | Noise Barrier | | Footbridge |
| | Existing Trees | | Proposed Hedgerow Planting | | Watercourse | | |
| | Existing Vegetation | | Proposed Wildflower Planting | | Wetland | | |

| Rev | Status | Rev. Date | Purpose of revision | Drawn | Checked | Appr'd |
|-----|--------|-----------|---------------------|-------|---------|--------|
| 01 | S2 | 21.03.18 | PEIR | RG | KB | DH |

Crown copyright and database rights 2016 OS 100030649

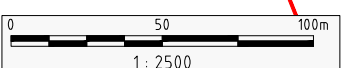
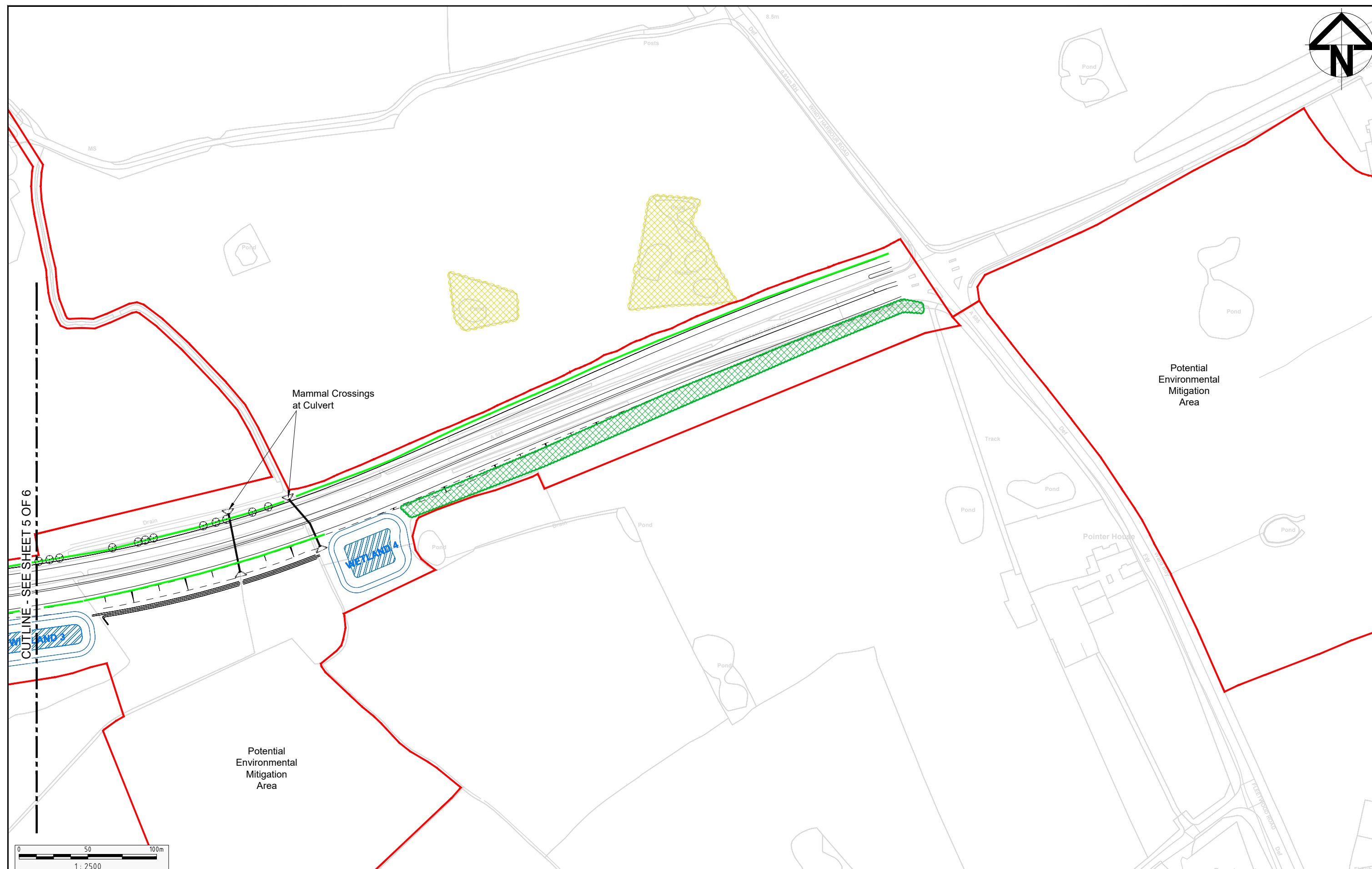
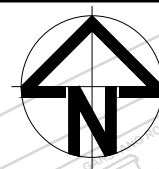
Client

Registered office: Stanning House, 22 Carleton Place, London SW1P 1JA
 Coordinating office: 5th Floor 401 Finsbury Street, Warrington, WA3 6GA, Tel: 44 (0)1925 800700
 www.arcadis.com

Project: A585 WINDY HARBOUR TO SKIPPOOL IMPROVEMENT SCHEME

Drawing title: ENVIRONMENTAL MITIGATION SHEET 5 OF 6

| PRELIMINARY ENVIRONMENTAL INFORMATION REPORT | | | |
|--|-------------|-------------|-----------|
| Scale | 1:2500 | Date | 21.03.18 |
| Drawn By | R.GRUBB | Checked By | K.BURROWS |
| Approved By | D.HOUD | Project No. | UA009921 |
| Original Size | A3 | Rev | 01 |
| Drawing number | FIGURE 16.1 | | |



| Rev | Status | Rev. Date | Purpose of revision | Drawn | Checked | Appr'd |
|-----|--------|-----------|---------------------|-------|---------|--------|
| 01 | S2 | 21.03.18 | PEIR | RG | KB | DH |

| KEY: | |
|------|-----------------------------------|
| | Draft Order Limits |
| | The Scheme |
| | Existing Trees |
| | Existing Vegetation |
| | Proposed Woodland Planting |
| | Proposed Individual Tree Planting |
| | Proposed Hedgerow Planting |
| | Proposed Wildflower Planting |
| | 5m High False Cutting |
| | Noise Barrier |
| | Watercourse |
| | Wetland |
| | Culverts |
| | Footbridge |

Crown copyright and database rights 2016 OS 100030649

Client

Registered office: 22 Carleton Place, London SW1P 1JA
 Coordinating office: 5th Floor 401 Finsbury Street, Warrington, WA3 6GA
 Tel: 44 (0)1925 800700
 www.arcadis.com

Project: A585 WINDY HARBOUR TO SKIPPOOL IMPROVEMENT SCHEME

Drawing title: ENVIRONMENTAL MITIGATION SHEET 6 OF 6

| PRELIMINARY ENVIRONMENTAL INFORMATION REPORT | | | |
|--|---------|----------------|-------------|
| Scale | 1:2500 | Date | 21.03.18 |
| Drawn By | R.GRUBB | Checked By | K.BURROWS |
| Approved By | D.HOUD | Project No. | UA009921 |
| Original Size | A3 | Drawing number | FIGURE 16.1 |
| Rev | 01 | | |