

Crown copyright and database rights 2016 OS 100030649

- NOTES:**
1. The ZTV was created using ESRI ArcGIS Software (Viewshed Analysis Tool). It is based on 5m Ground Elevation Model (LIDAR) supplied by Highways England.
 2. The ZTV illustrates the area of theoretical visibility of the proposed vertical alignment of the A585 Southern Bypass and a view height of 1.5m.
 3. The ZTV provides an appropriate starting point for undertaking the visual impact assessment and assessment of viewpoints.

KEY:

- | | | | |
|--|--------------------|--|--|
| | Draft Order Limits | | Public Right of Way |
| | 2km Study Area | | Greenbelt (2011) |
| | 5km Radii Offset | | Representative Viewpoint Locations (beyond 2km Study Area) |
| | Wyre Way | | |

Rev	Status	Rev. Date	Purpose of revision	Drawn	Checked	Approved
01	S2	21.03.18	PEIR	JN	AC	KB

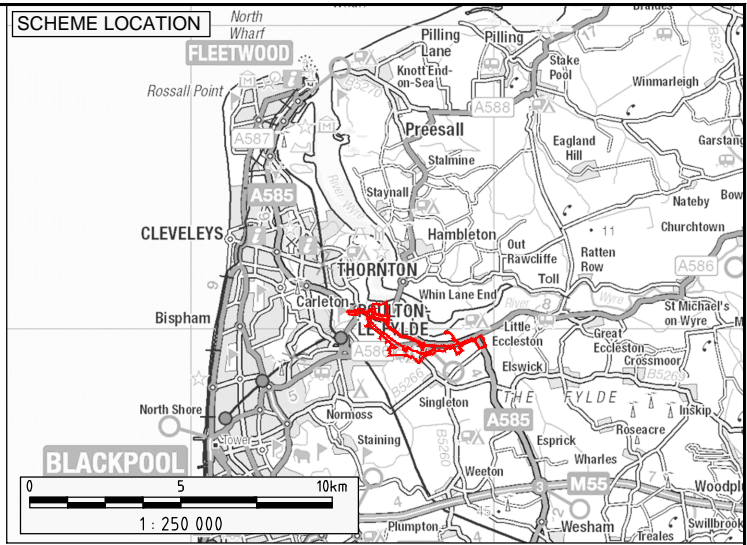
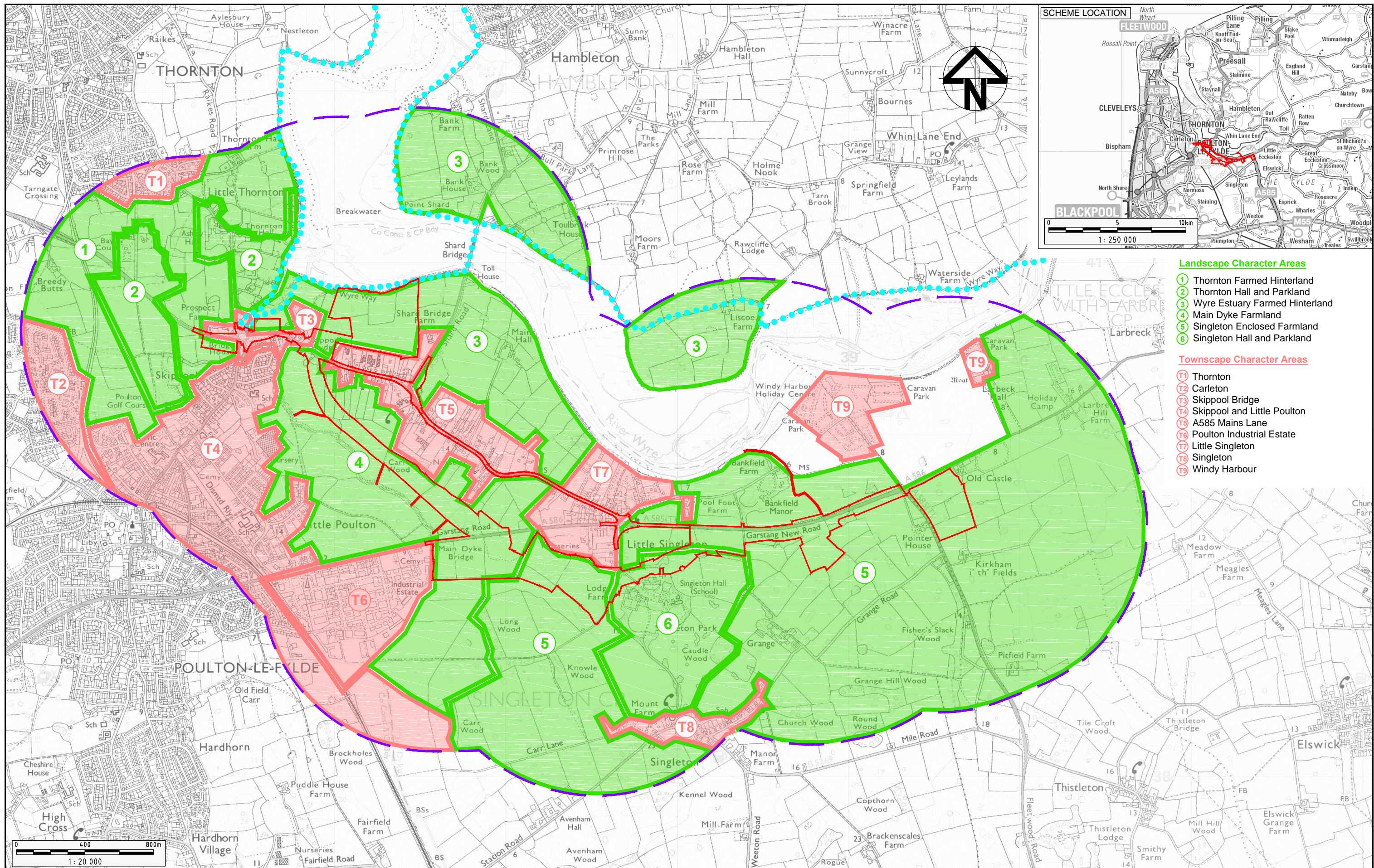
Registered office:
Marney House
22 Carlisle Place
London, W13 6GA
SW1P 1JA
Tel: 44 (0)1925 800700

Coordinating office:
6th Floor 401 Finsbury Street
Richmond Park
Barnham, W13 6GA
Tel: 44 (0)1925 800700

A585 WINDY HARBOUR TO SKIPPOOL IMPROVEMENT SCHEME

Drawing title: **ZONE OF THEORETICAL VISIBILITY BEYOND 2KM STUDY AREA AND REPRESENTATIVE VIEWPOINT LOCATIONS**

PRELIMINARY ENVIRONMENTAL INFORMATION REPORT		
Scale	1:50 000	Date - 21.03.18
Drawn By	J. NORMAN	
Checked By	K. BURROWS	
Approved By	ID. HOURD	
Project No.	UA009921	Original Size
Drawing number	FIGURE 8.1b	Rev
		01



- Landscape Character Areas**
- 1 Thornton Farmed Hinterland
 - 2 Thornton Hall and Parkland
 - 3 Wyre Estuary Farmed Hinterland
 - 4 Main Dyke Farmland
 - 5 Singleton Enclosed Farmland
 - 6 Singleton Hall and Parkland
- Townscape Character Areas**
- T1 Thornton
 - T2 Carleton
 - T3 Skipool Bridge
 - T4 Skipool and Little Poulton
 - T5 A585 Mains Lane
 - T6 Poulton Industrial Estate
 - T7 Little Singleton
 - T8 Singleton
 - T9 Windy Harbour

01	S2	21.03.18	PEIR	JN	AC	KB
Rev	Status	Rev. Date	Purpose of revision	Drawn	Checked	Approved

KEY:

- Draft Order Limits
- 1km Study Area
- Wyre Way
- 1 Landscape Character Area
- T1 Townscape Character Area

Crown copyright and database rights 2016 OS 100030649

highways england

ARCADIS

Registered office: 22 Carisle Place, London, SW1P 1JA
 Coordinating office: 5th Floor, 401 Finsbury Street, Birmingham, B3 6GA
 Tel: 44 (0)121 600700
 www.arcadis.com

A585 WINDY HARBOUR TO SKIPPOOL IMPROVEMENT SCHEME

KEY VISUAL RECEPTORS, LANDSCAPE DESIGNATIONS, THEORETICAL ZTV AND REPRESENTATIVE VIEWPOINT LOCATIONS

PRELIMINARY ENVIRONMENTAL INFORMATION REPORT	
Scale: 1:20 000	Date: 21.03.18
Drawn By: J. NORMAN	
Checked By: K. BURROWS	
Approved By: I.D. HOURD	
Project No: UA009921	Original Size: A3
Drawing number: FIGURE 8.2	Rev: 01