

# A1 in Northumberland

## Alnwick to Ellingham Scheme

Public consultation exhibition 2019

# Welcome



# A1 in Northumberland

## Alnwick to Ellingham Scheme



## Investing in your roads

Schemes improving the A1 in Northumberland are a critical part of a £15 billion investment on our network.

The A1 in Northumberland investment comprises 3 distinct packages:

- A1 Morpeth to Felton dualling scheme
- A1 Alnwick to Ellingham dualling scheme
- A1 north of Ellingham improvements

These schemes form part of a £290m investment on the A1, which will provide additional capacity, and improve journey times and safety while supporting economic growth in the region.

The A1 Alnwick to Ellingham scheme is categorised as a Nationally Significant Infrastructure Project (NSIP) under the Planning Act 2008. As such, we are required to make an application for a Development Consent Order (DCO) to obtain planning permission to construct the scheme.

For more information on this process, please refer to our Development Consent for our Major Road Schemes leaflet, which is available to view on our webpage:

**[highwaysengland.co.uk/a2e](https://www.highwaysengland.co.uk/a2e)**

# A1 in Northumberland

## Alnwick to Ellingham Scheme

### Objectives of the scheme

The A1 Alnwick to Ellingham dualling upgrade involves widening the A1 to dual carriageway along the existing single carriageway road, for approximately 5.3 miles.

The route begins at the end of the Alnwick bypass in a northerly direction where it will tie in at the existing dual carriageway at Brownieside, near Ellingham.

By dualling the A1 between Alnwick and Ellingham we aim to:

- Improve safety for all users of the A1.
- Support economic growth in the area.
- Provide a more consistent standard of road with more consistent layout of junctions.
- Reduce the number of junctions and private accesses to improve safety.



# A1 in Northumberland

## Alnwick to Ellingham Scheme

### Investing in your roads

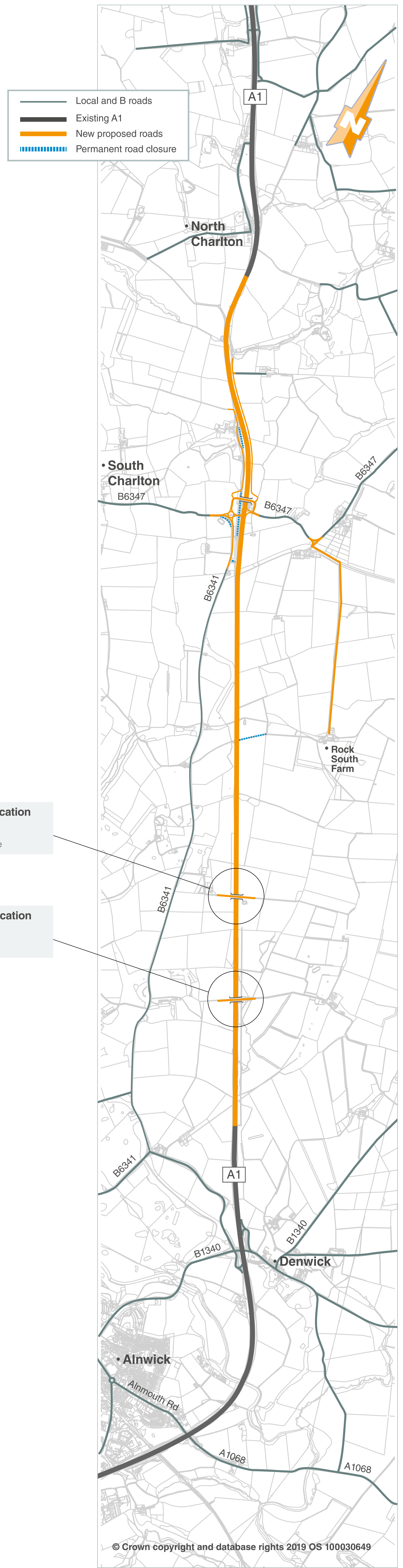
The A1 Alnwick to Ellingham dualling upgrade involves widening the A1 to dual carriageway along the existing single carriageway road, for approximately 5.3 miles

Currently the A1 between the Alnwick bypass and North Charlton is a wide single carriageway road and does not conform to modern standards. Our improvements will be north of the junction for Denwick and will continue to link in to the dual carriageway at Brownieside.

The dualling will take place along the current route line, widening the existing single carriageway. Key features will include:

- Closing off direct access to the A1 for safety reasons.
- Providing access roads to East Linkhall and West Linkhall, as well as Rock South Farm.
- A split-level junction with a bridge over the A1 at Charlton Mires
- An overbridge across the A1 at Broxfield or Heckley Fence.

- Overbridge location option 2
  - Heckley Fence
- Overbridge location option 1
  - Broxfield



# A1 in Northumberland

## Alnwick to Ellingham Scheme

### Our proposed design

The revamped Charlton Mires junction will ensure that existing links to the key secondary routes in the area remain accessible but safer to negotiate, for both vehicles and pedestrians.

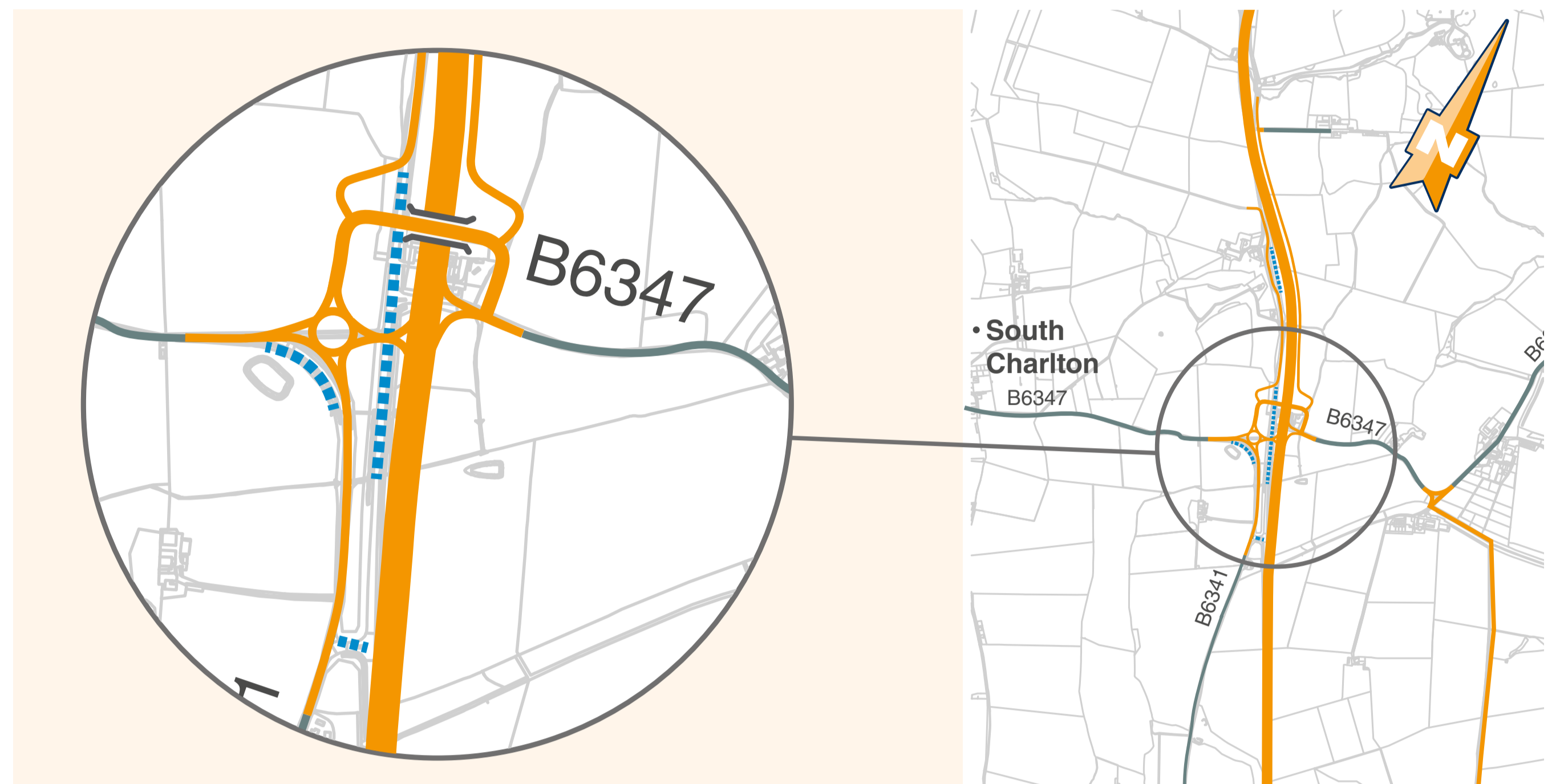
These being the B6347 (linking the Northumberland Coast in the east and towards the A697 in the west) and B6341 (linking Alnwick town centre to Rothbury and the A696). The new overbridge will replace the existing staggered junction and as well as allowing access to secondary road networks, it will permit vehicles to

manoeuvre from the north to southbound carriageway (or vice versa) without conflict with other vehicles.

#### Charlton Mires junction

- Split-level junction, with bridge over the A1
- Providing access to local roads and the A1
- Access roads to East Linkhall and West Linkhall

- Local and B roads
- Existing A1
- New proposed road
- Permanent road closure



**Overbridge** - An overbridge will be constructed as part of the scheme to maintain access across the A1 for existing public rights of way. There are two possible locations:

#### Option 1 - Broxfield:

The location has minimal disruption to the existing public rights of way but would need more land to accommodate a new agricultural access track, which will be located to the west of the A1 (alignment to be developed with associated landowners).

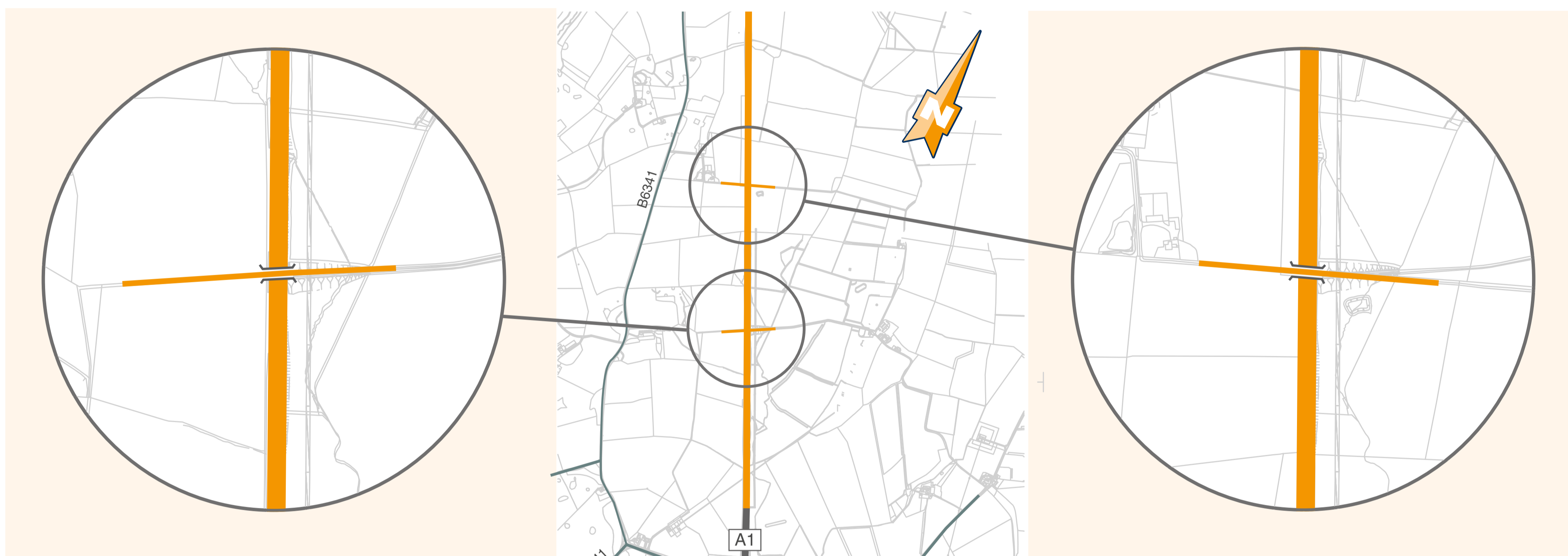
#### Option 2 - Heckley Fence:

Heckley Fence location requires the existing public rights of way at Broxfield to be diverted approximately 1km to the north. However, it is more centrally situated along the route to serve the needs of all surrounding public rights of way. The Heckley Fence location would not require more land, as the overbridge would accommodate the required agricultural access across the A1.

#### Overbridge location option 1

- Broxfield

- Local and B roads
- Existing A1
- New proposed road
- Permanent road closure



#### Overbridge location option 2

- Heckley Fence

Disclaimer: This image is a schematic representation and is not to scale.

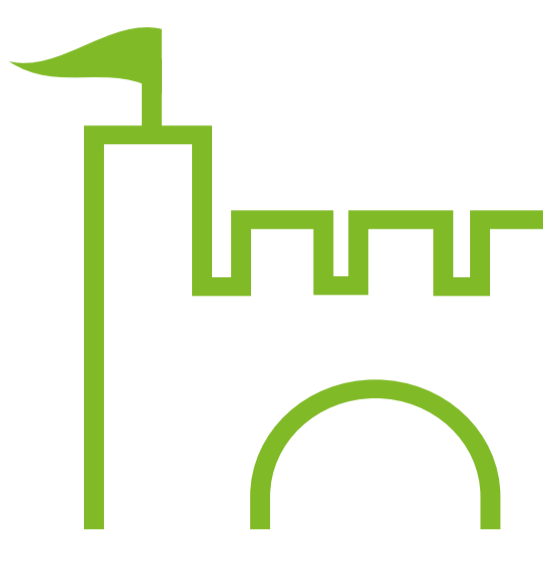
© Crown copyright and database rights 2019 OS 100030649

# A1 in Northumberland

## Alnwick to Ellingham Scheme

### Environment

The scheme currently incorporates the following potential environmental mitigation measures:



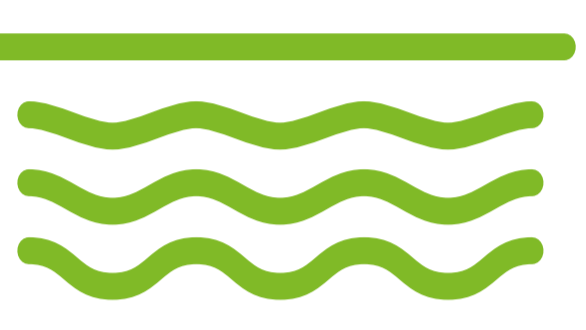
#### Cultural Heritage

- Design changes to avoid known cultural heritage assets and managing works around these
- Where not possible, assets will be preserved in record or in situ
- Incorporate measures to enhance heritage assets by screening where impacts possible



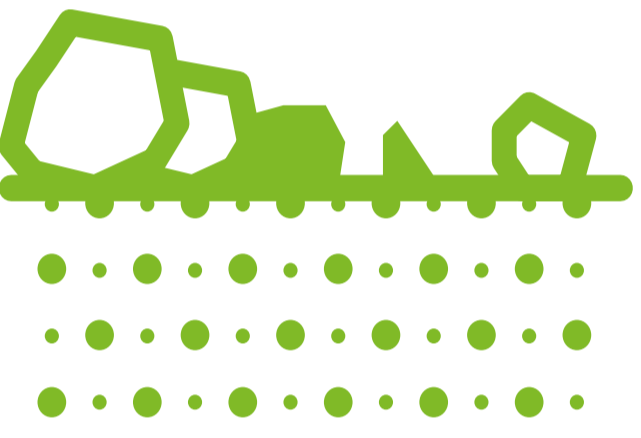
#### Ecology and Nature Conservation

- Habitat replacement and or enhancement and compensatory habitat creation



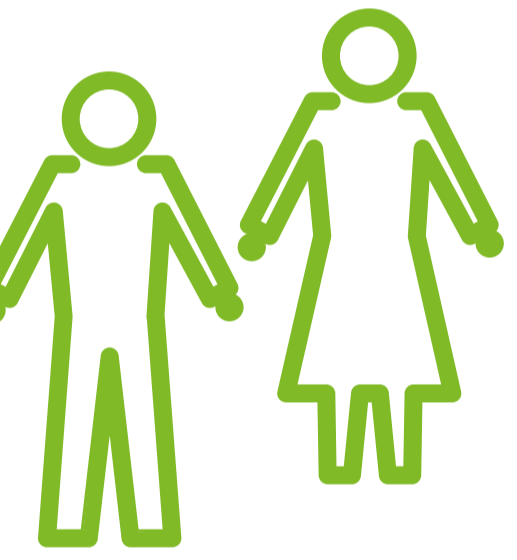
#### Road Drainage and the Water Environment

- Control measures to minimise risks during construction
- Improved drainage system to help prevent flooding
- Measures to improve the quality of water entering local waterways



#### Geology and Soils

- Where possible materials will be reused within the construction site



#### Population and Health

- Traffic management and clearly signposted diversions to maintain connectivity
- Replacement access roads provided where private access roads are permanently closed
- Several public rights of way will be impacted through permanent or temporary closure
- Replacements of bus stops lost, where appropriate



#### Climate

- Design to reduce potential emissions impacts and account for climate extremes

**You can read about our potential environmental mitigation proposals in the Preliminary Environmental Information Report (accessed through our consultation webpage).**

# A1 in Northumberland Alnwick to Ellingham Scheme

## What happens next?

Once the consultation has closed on 8 April 2019, we'll review all the suggestions and comments that we have received.

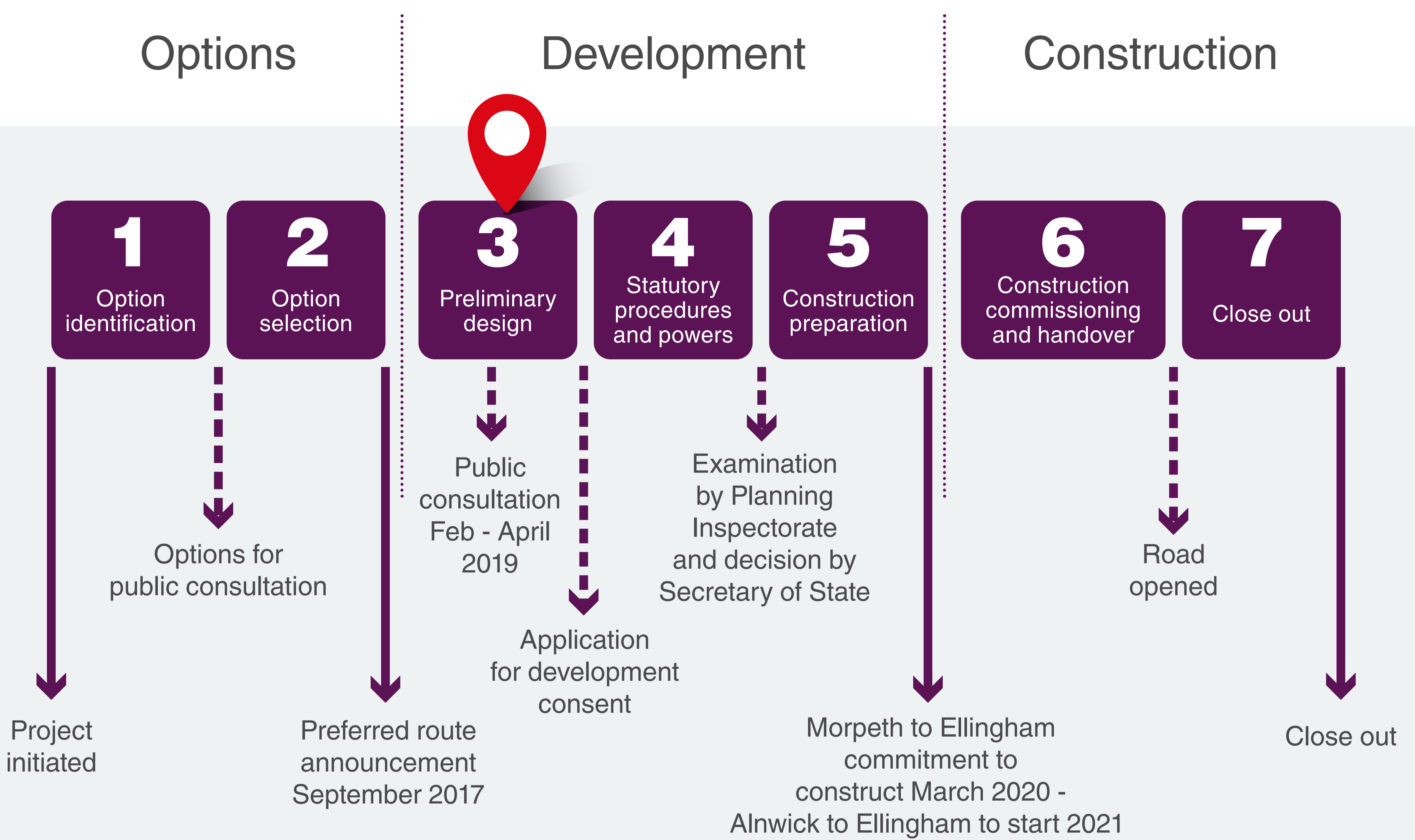
We expect to submit our application by late 2019 and more information about the DCO process can be found on the Planning Inspectorate's website:

[infrastructure.planninginspectorate.gov.uk](http://infrastructure.planninginspectorate.gov.uk)

The process is explained in the table below.

The consultation will run for 6 weeks, from  
**Monday 25 February to Monday 8 April 2019**

**All responses must be returned by 23:59 on Monday 8 April 2019**



# Your data. Your rights.

On 25 May 2018, the General Data Protection Regulations (GDPR) became law. The law requires Highways England to explain to you – consultees, stakeholders and customers – how your personal data will be used and stored.

Highways England adheres to the government's consultation principles, the Planning Act 2008 and the Highways Act 1980 as required, and may collect personal data to help shape development of highways schemes.

Personal data collected by the project team will be processed and retained by Highways England and its appointed contractors until the scheme is complete. In some instances consultation responses may also be sent to the Planning Inspectorate.

#### Under the GDPR regulations you have the following rights:

- **Right of access to the data (Subject Access Request)**
- **Right for the rectification of errors**
- **Right to erasure of personal data – this is not an absolute right under the legislation**
- **Right to restrict processing or to object to processing**
- **Right to data portability**

If, at any point, Highways England plans to process the personal data we hold for a purpose other than that for which it was originally collected, we will tell you what that other purpose is. We will do this prior to any further processing taking place and we will include any relevant additional information, including your right to object to that further processing.

You have the right to lodge a complaint with the supervisory authority, the Information Commissioners Office.

If you'd like more information about how we manage data, or a copy of our privacy notice, please contact:

[DataProtectionAdvice@highwaysengland.co.uk](mailto:DataProtectionAdvice@highwaysengland.co.uk)

[highwaysengland.co.uk](http://highwaysengland.co.uk)

