

**NOTES**

- ALL DIMENSIONS ARE IN METRES ABOVE DATUM UNLESS NOTED OTHERWISE.
- THE DESIGN SHOWN ON THESE ENGINEERING SECTION DRAWINGS IS ILLUSTRATIVE AND WILL BE SUBJECT TO DETAILED DESIGN DEVELOPMENT.

**KEY**

- Horizontal - Plan**
- THE SCHEME (SHOWN FOR ILLUSTRATIVE PURPOSES ONLY)
  - CURVE ALIGNMENT
  - STRAIGHT ALIGNMENT
  - TRANSITION ALIGNMENT
  - ROAD NAMES
  - CHAINAGE (MEASURED DISTANCE ALONG THE SCHEME LENGTH)
- Vertical - Profile**
- PROPOSED VERTICAL DESIGN LEVEL
  - EXISTING GROUND LEVEL



---	---	---	---	---	---
P01	EKEL	EKEL	EKEL	TEGG	---
	27/08/21	27/08/21	27/08/21	27/08/21	---
P02	JMAR	EKEL	EKEL	TEGG	SSCO
	13/09/21	13/09/21	13/09/21	13/09/21	13/09/21
Revision	Revision details				
	Created	Checked	Reviewed	Approved	Authorised
	dd/mm/yy	dd/mm/yy	dd/mm/yy	dd/mm/yy	dd/mm/yy

Designer  
 Amey OW Limited  
 Chancery Exchange  
 10 Furnival Street  
 London, EC4A 1AB

Client  
 3 Piccadilly Place  
 Manchester  
 M1 3BN

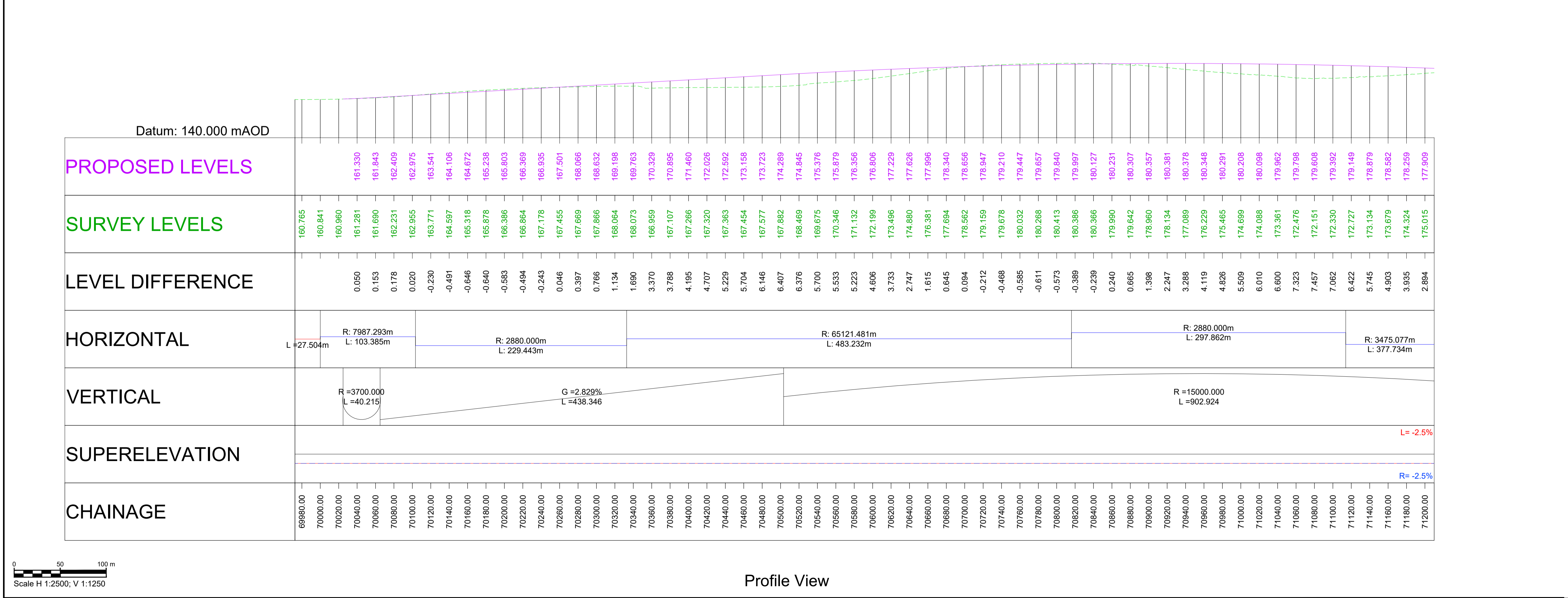
Project Name  
**A66 Northern Trans-Pennine**

Drawing Title  
**Stephen Bank to Carkin Moor  
 Plan and Profiles Mainline  
 Sheet 1 of 4**

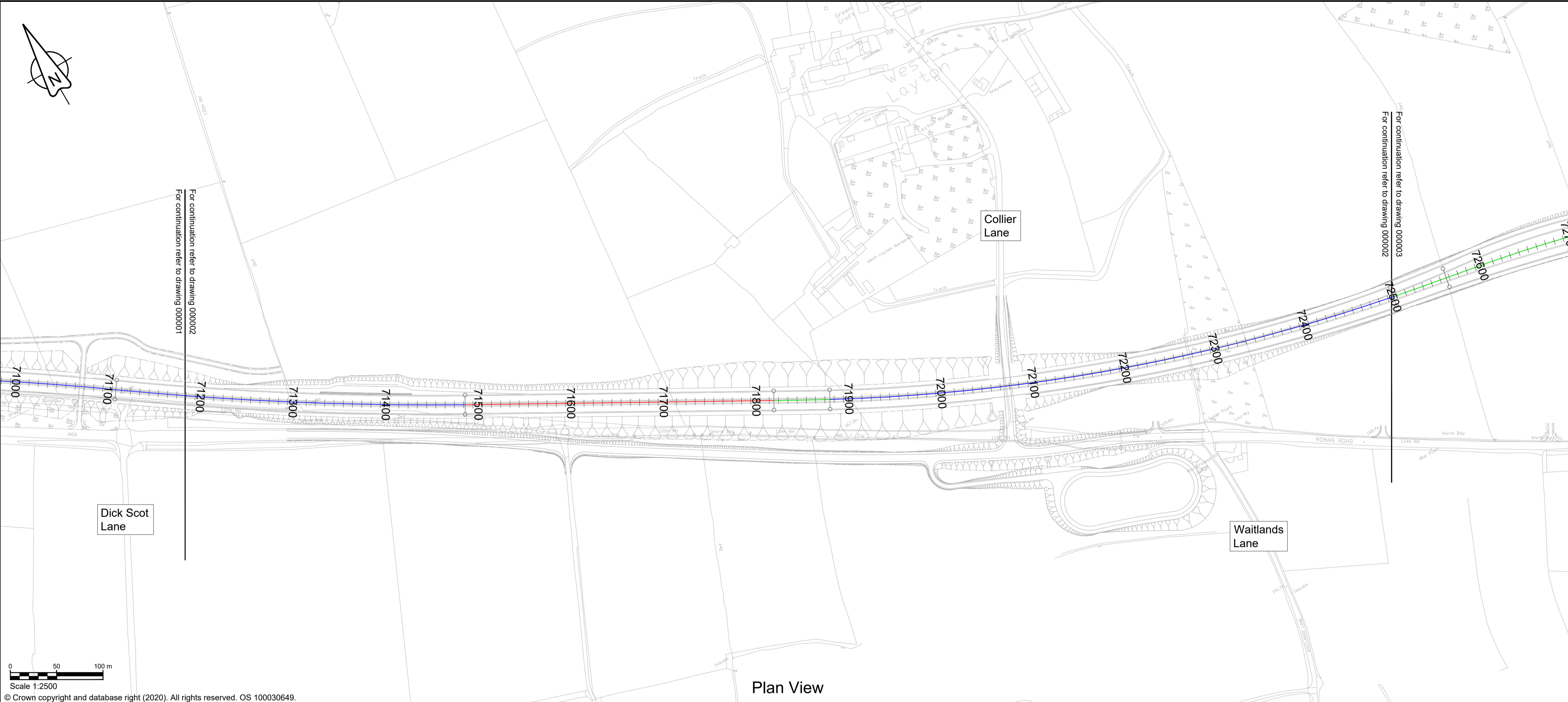
Project Ref. No.	Stage	Scale : 1:2500	@ A1
---	---	Dimensions : N/A	

Drawing Number	Project	Originator	Volume
HE565627 - AMY - HML -	S09	-DR-CH-	000001
Location	Type	Role	Number

Suitability	Suitability Description	Revision
S1	Fit for Co-ordination	P02

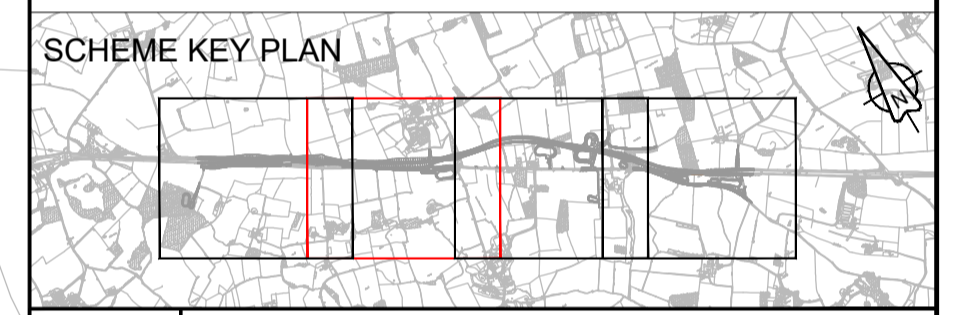


Scale H 1:2500; V 1:1250



Plan View

- ### NOTES
- ALL DIMENSIONS ARE IN METRES ABOVE DATUM UNLESS NOTED OTHERWISE.
  - THE DESIGN SHOWN ON THESE ENGINEERING SECTION DRAWINGS IS ILLUSTRATIVE AND WILL BE SUBJECT TO DETAILED DESIGN DEVELOPMENT.
- ### KEY
- Horizontal - Plan**
- THE SCHEME (SHOWN FOR ILLUSTRATIVE PURPOSES ONLY)
  - CURVE ALIGNMENT
  - STRAIGHT ALIGNMENT
  - TRANSITION ALIGNMENT
  - ROAD NAMES
  - CHAINAGE (MEASURED DISTANCE ALONG THE SCHEME LENGTH)
- Vertical - Profile**
- PROPOSED VERTICAL DESIGN LEVEL
  - EXISTING GROUND LEVEL



Revision					
Revision details					
Created	Checked	Reviewed	Approved	Authorised	
dd/mm/yy	dd/mm/yy	dd/mm/yy	dd/mm/yy	dd/mm/yy	
---	---	---	---	---	
P01	EKEL 27/08/21	EKEL 27/08/21	EKEL 27/08/21	TEGG 27/08/21	---
P02	JMAR 13/09/21	EKEL 13/09/21	EKEL 13/09/21	TEGG 13/09/21	SSCO 13/09/21

Designer  
**Amey OW Limited**  
 Chancery Exchange  
 10 Furnival Street  
 London, EC4A 1AB

Client  
 3 Piccadilly Place  
 Manchester  
 M1 3BN

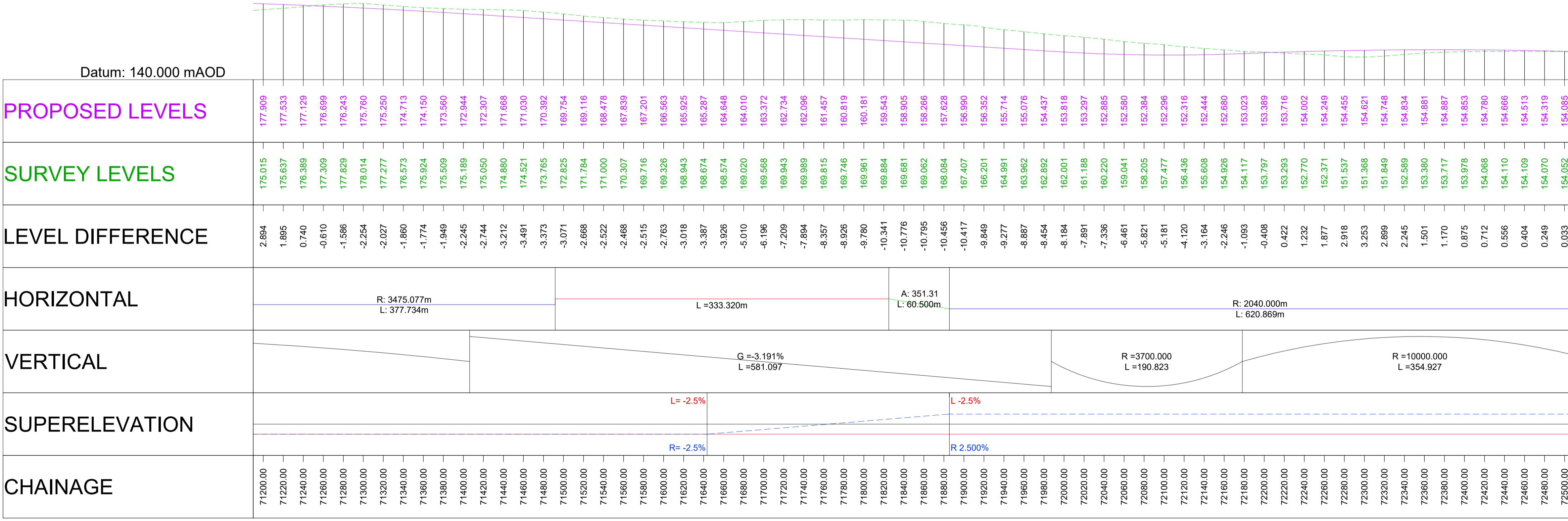
Project Name  
**A66 Northern Trans-Pennine**

Drawing Title  
**Stephen Bank to Carkin Moor  
 Plan and Profiles Mainline  
 Sheet 2 of 4**

Project Ref. No.	Stage	Scale : 1:2500	@ A1
---	---	Dimensions : N/A	

Drawing Number	Project	Originator	Volume
HE565627 - AMY - HML -	S09	-DR-CH-	000002
Location	Type	Role	Number

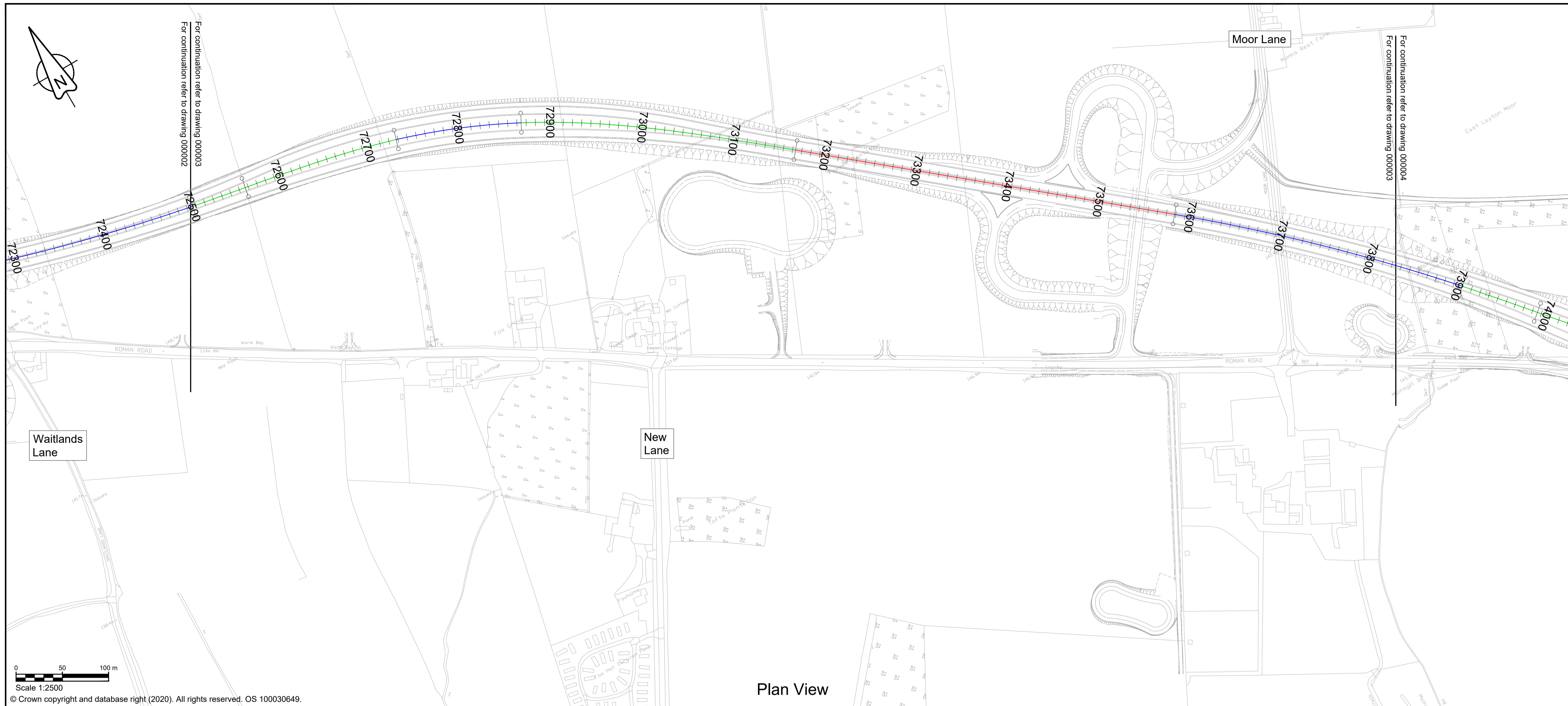
Suitability	Suitability Description	Revision
S1	Fit for Co-ordination	P02



Profile View

Scale 1:2500  
 © Crown copyright and database right (2020). All rights reserved. OS 100030649.

Scale H 1:2500; V 1:1250

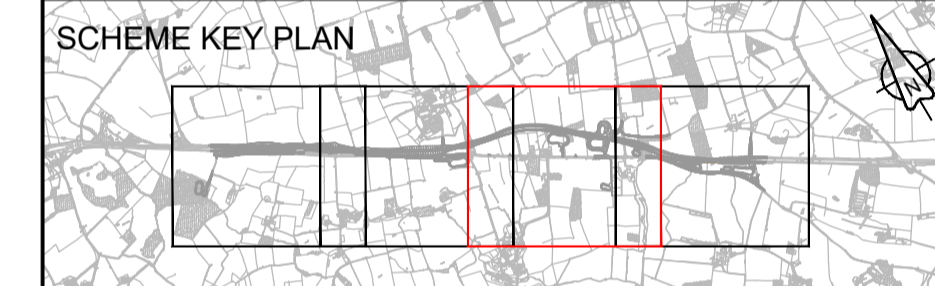


### NOTES

- ALL DIMENSIONS ARE IN METRES ABOVE DATUM UNLESS NOTED OTHERWISE.
- THE DESIGN SHOWN ON THESE ENGINEERING SECTION DRAWINGS IS ILLUSTRATIVE AND WILL BE SUBJECT TO DETAILED DESIGN DEVELOPMENT.

### KEY

- Horizontal - Plan**
- THE SCHEME (SHOWN FOR ILLUSTRATIVE PURPOSES ONLY)
  - CURVE ALIGNMENT
  - STRAIGHT ALIGNMENT
  - TRANSITION ALIGNMENT
  - ROAD NAMES
  - CHAINAGE (MEASURED DISTANCE ALONG THE SCHEME LENGTH)
- Vertical - Profile**
- PROPOSED VERTICAL DESIGN LEVEL
  - EXISTING GROUND LEVEL



---	---	---	---	---	---
P01	EKEL	EKEL	EKEL	TEGG	---
	27/08/21	27/08/21	27/08/21	27/08/21	---
P02	JMAR	EKEL	EKEL	TEGG	SSCO
	13/09/21	13/09/21	13/09/21	13/09/21	13/09/21
Revision	Revision details				
	Created	Checked	Reviewed	Approved	Authorised
	dd/mm/yy	dd/mm/yy	dd/mm/yy	dd/mm/yy	dd/mm/yy

Designer  
 Amey OW Limited  
 Chancery Exchange  
 10 Furnival Street  
 London, EC4A 1AB

Client  
 3 Piccadilly Place  
 Manchester  
 M1 3BN

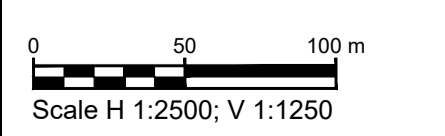
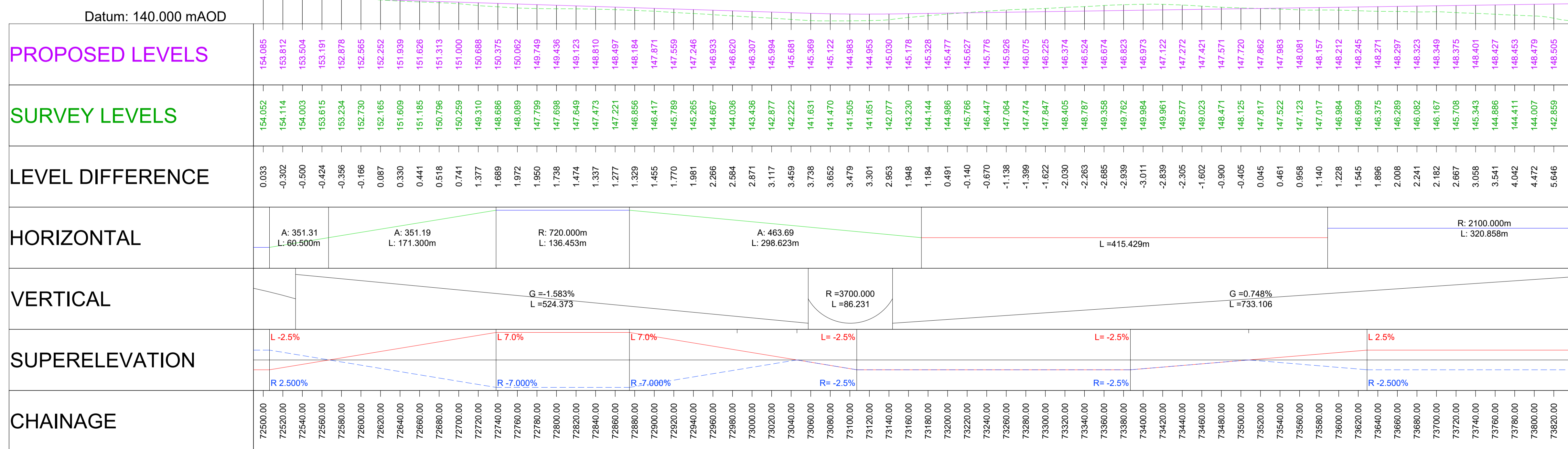
Project Name  
**A66 Northern Trans-Pennine**

Drawing Title  
**Stephen Bank to Carlin Moor  
 Plan and Profiles Mainline  
 Sheet 3 of 4**

Project Ref. No. Stage Scale: 1:2500 @ A1  
 --- --- Dimensions: N/A

Drawing Number  
 Project HE565627 - AMY - HML -  
 S09 -DR-CH- 000003  
 Location | Type | Role | Number

Suitability S1 Suitability Description Fit for Co-ordination Revision P02





### NOTES

- ALL DIMENSIONS ARE IN METRES ABOVE DATUM UNLESS NOTED OTHERWISE.
- THE DESIGN SHOWN ON THESE ENGINEERING SECTION DRAWINGS IS ILLUSTRATIVE AND WILL BE SUBJECT TO DETAILED DESIGN DEVELOPMENT.

### KEY

- Horizontal - Plan**
- THE SCHEME (SHOWN FOR ILLUSTRATIVE PURPOSES ONLY)
  - CURVE ALIGNMENT
  - STRAIGHT ALIGNMENT
  - TRANSITION ALIGNMENT
  - ROAD NAMES
  - CHAINAGE (MEASURED DISTANCE ALONG THE SCHEME LENGTH)
- Vertical - Profile**
- PROPOSED VERTICAL DESIGN LEVEL
  - EXISTING GROUND LEVEL



---	---	---	---	---	---
P01	EKEL	EKEL	EKEL	TEGG	---
P02	JMAR	EKEL	EKEL	TEGG	---
Revision	Created	Checked	Reviewed	Approved	Authorised
	dd/mm/yy	dd/mm/yy	dd/mm/yy	dd/mm/yy	dd/mm/yy

Designer  
Amey OW Limited  
Chancery Exchange  
10 Furnival Street  
London, EC4A 1AB

**A66 NTP** Integrated Project Team

Client  
3 Piccadilly Place  
Manchester  
M1 3BN

**highways** england

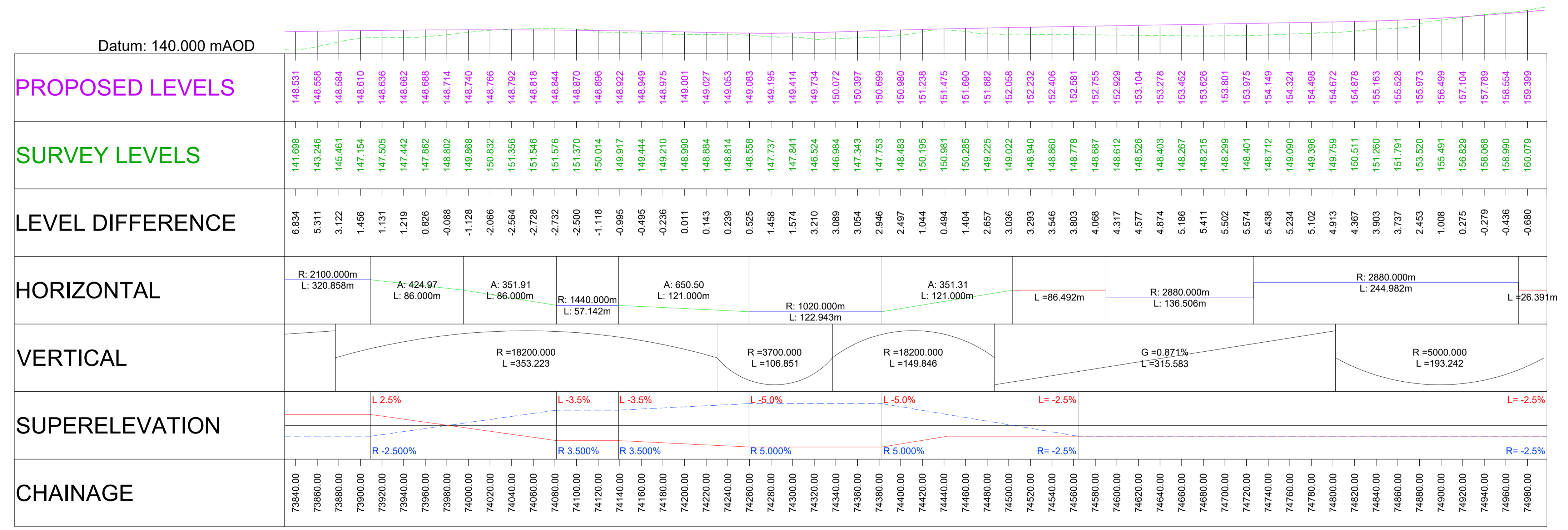
Project Name  
**A66 Northern Trans-Pennine**

Drawing Title  
**Stephen Bank to Carkin Moor  
Plan and Profiles Mainline  
Sheet 4 of 4**

Project Ref. No.	Stage	Scale : 1:2500	@ A1
---	---	Dimensions : N/A	

Drawing Number  
Project | Originator | Volume |  
**HE565627 - AMY - HML -**  
S09 -DR-CH- 000004  
Location | Type | Role | Number

Suitability	Suitability Description	Revision
S1	Fit for Co-ordination	P02



Profile View

