

KEY:					
	Draft Order Limits		Non-Statutory Heritage Asset		Conservation Area
	1km Study Area		Grade II Listed Building		Non-Statutory Heritage Asset Area
	Non-Statutory Heritage Asset Area		Non-Statutory Linear Heritage Asset		

Rev	Status	Rev. Date	Purpose of revision	Drawn	Checked	Approved
01	S2	21.03.18	PEIR	JN	KB	DH

Client: **highways england**

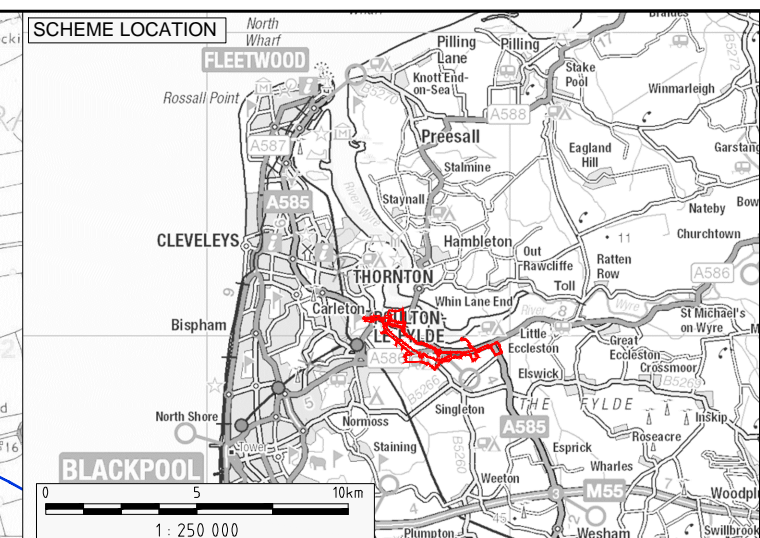
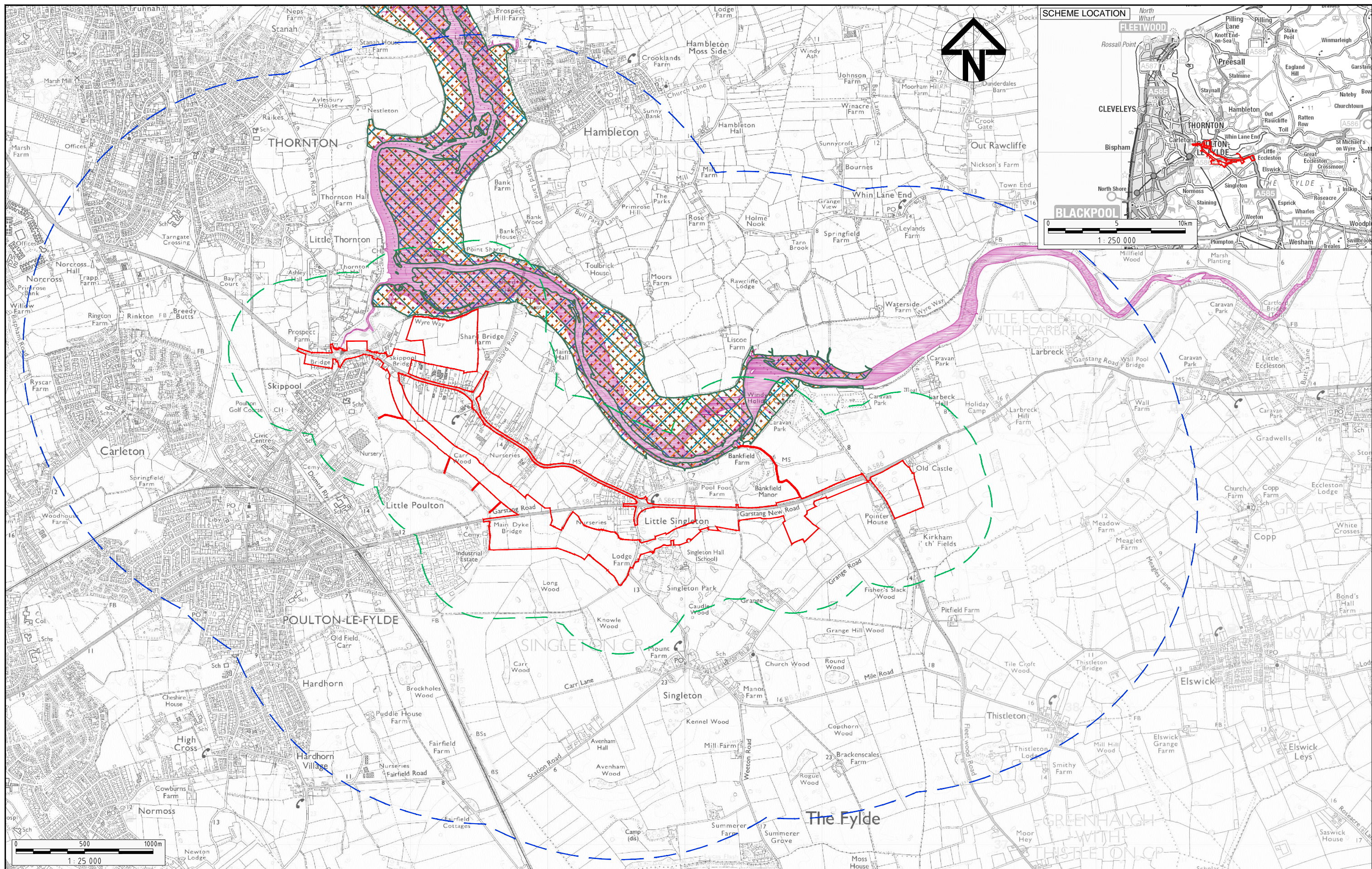
ARCADIS

Registered office: 22 Carisle Place, London, SW1P 1JA
 Coordinating office: 2nd Floor 401 Finsbury Street, Birmingham, B3 6GA
 Tel: 44 (0)121 600700

Project: **A585 WINDY HARBOUR TO SKIPPOOL IMPROVEMENT SCHEME**

Drawing title: **CULTURAL HERITAGE: ASSET LOCATION PLAN AND STUDY AREA**

PRELIMINARY ENVIRONMENTAL INFORMATION REPORT		
Scale	1:25 000	Date - 21.03.18
Drawn By	J.NORMAN	
Checked By	K.BURROWS	
Approved By	D.HOUD	
Project No.	UA009921	Original Size
Drawing number	FIGURE 6.1	Rev
		01



Rev	Status	Rev. Date	Purpose of revision	Drawn	Checked	Approved
01	S2	21.03.18	PEIR	JN	KB	DH

KEY:

Draft Order Limits	Morecambe Bay Important Bird Area	Wyre Estuary Site of Special Scientific Interest (SSSI)
500m Study Area	Wyre-Lune Recommended Marine Conservation Zone	Morecambe Bay and Duddon Estuary Special Protection Area (SPA)
2km Study Area	Morecambe Bay Ramsar Site	

Crown copyright and database rights 2016 OS 100030649

Client

Registered office: Manning House, 22 Carleton Place, London, SW1P 1JA, Tel: 44 (0)1925 800700

Coordinating office: 5th Floor 401 Finsbury Street, Richmond Park, Wareham, Dorset, BH20 6GA, Tel: 44 (0)1925 800700

www.arcadis.com

Project **A585 WINDY HARBOUR TO SKIPPOOL IMPROVEMENT SCHEME**

Drawing title **BIODIVERSITY: DESIGNATED AND PROPOSED STATUTORY SITES**

PRELIMINARY ENVIRONMENTAL INFORMATION REPORT

Scale **1:25 000** Date **21.03.18**

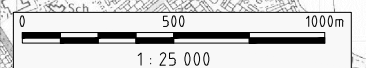
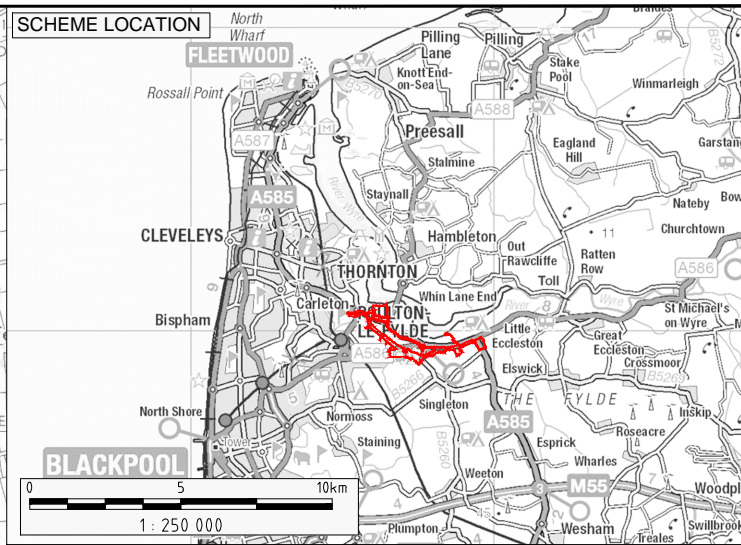
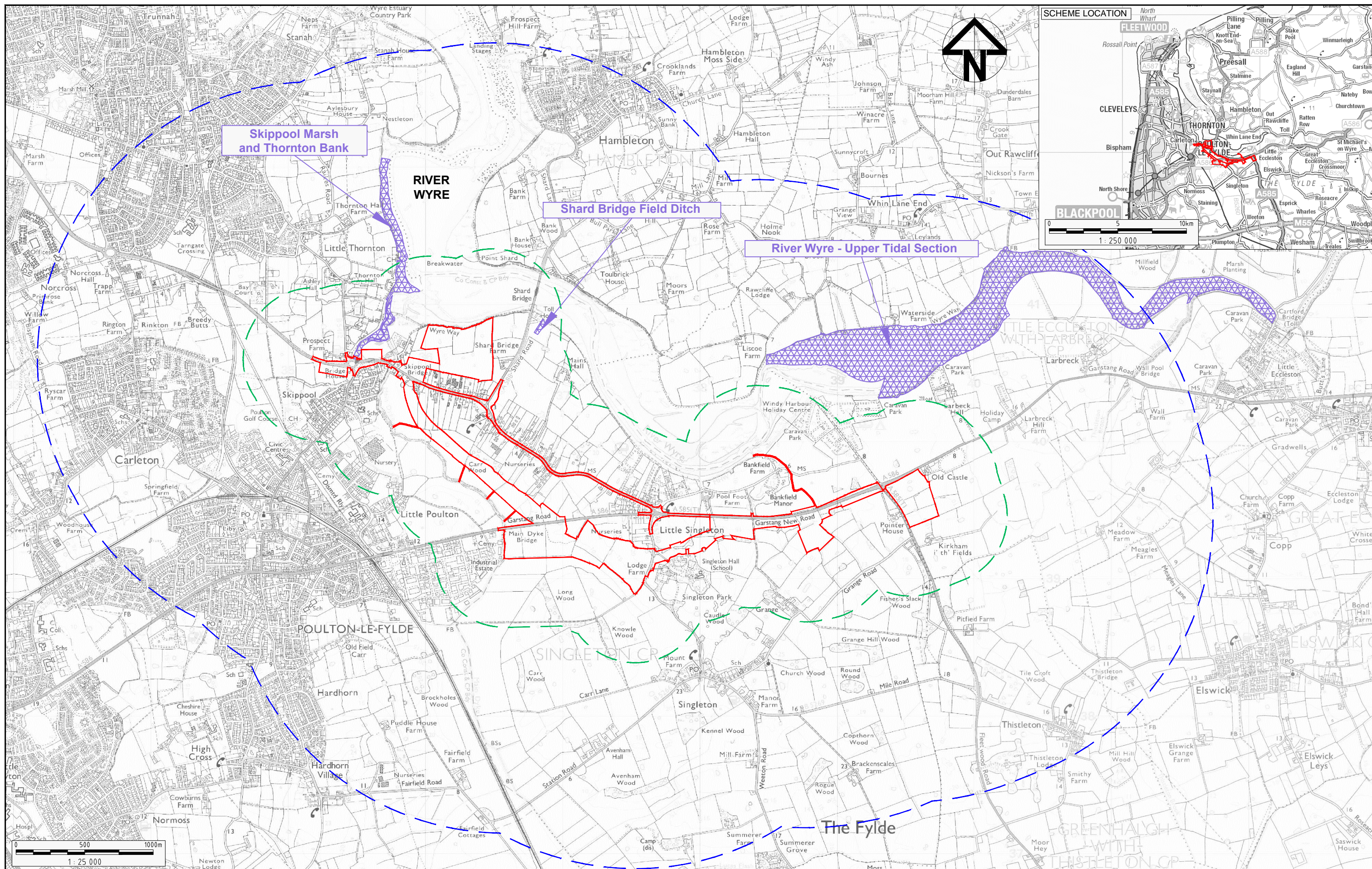
Drawn By **J.NORMAN**

Checked By **K.BURROWS**

Approved By **D.HOUD**

Project No. **UA009921** Original Size **A3**

Drawing number **FIGURE 7.1** Rev **01**



KEY:

	Draft Order Limits		Biological Heritage Site
	500m Study Area		
	2km Study Area		

01	S2	21.03.18	PEIR	JN	KB	DH
Rev	Status	Rev. Date	Purpose of revision	Drawn	Checked	Approved

Crown copyright and database rights 2016 OS 100030649

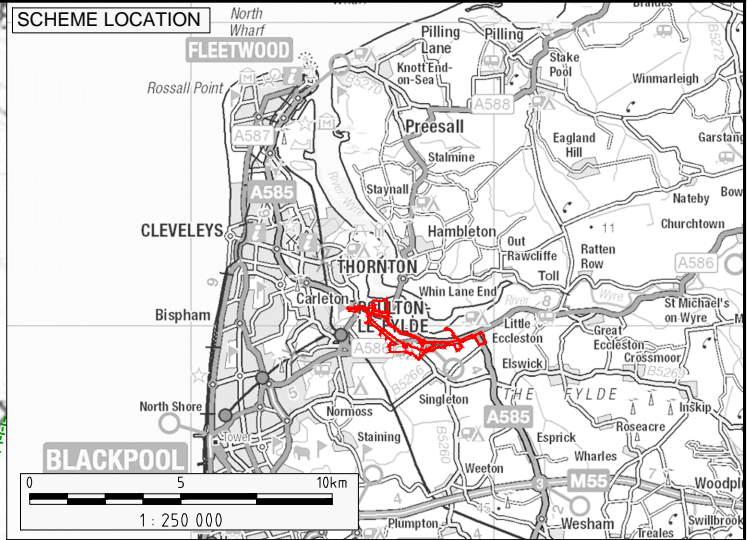
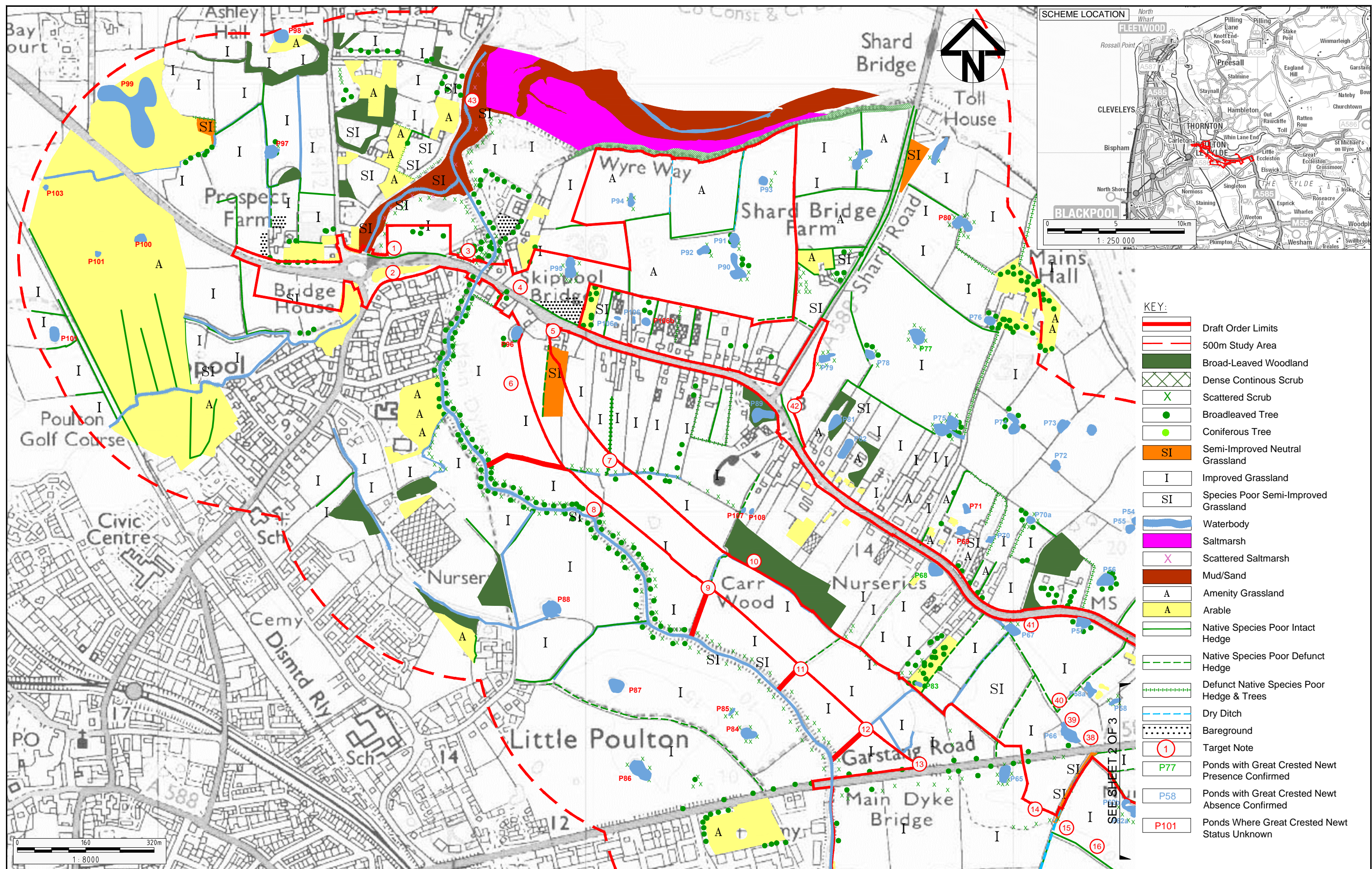
Client

Registered office: Manning House, 22 Carisle Place, London, SW1P 1JA
 Coordinating office: 5th Floor, 401 Finsbury Street, Birmingham, B3 6GA
 Tel: 44 (0)121 600700
www.arcadis.com

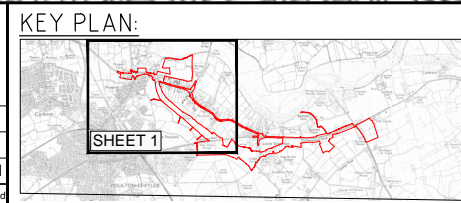
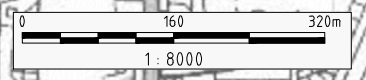
Project **A585 WINDY HARBOUR TO SKIPPOOL IMPROVEMENT SCHEME**

Drawing title **BIODIVERSITY: NON-STATUTORY DESIGNATED SITES**

PRELIMINARY ENVIRONMENTAL INFORMATION REPORT		
Scale	1:25 000	Date - 21.03.18
Drawn By	J.NORMAN	
Checked By	K.BURROWS	
Approved By	D.HOUD	
Project No.	UA009921	Original Size
Drawing number	FIGURE 7.2	A3
		Rev 01



- KEY:**
- Draft Order Limits
 - 500m Study Area
 - Broad-Leaved Woodland
 - Dense Continuous Scrub
 - X Scattered Scrub
 - Broadleaved Tree
 - Coniferous Tree
 - SI Semi-Improved Neutral Grassland
 - I Improved Grassland
 - SI Species Pool Semi-Improved Grassland
 - Waterbody
 - Saltmarsh
 - X Scattered Saltmarsh
 - Mud/Sand
 - A Amenity Grassland
 - A Arable
 - Native Species Pool Intact Hedge
 - Native Species Pool Defunct Hedge
 - Defunct Native Species Pool Hedge & Trees
 - Dry Ditch
 - Bareground
 - 1 Target Note
 - P77 Ponds with Great Crested Newt Presence Confirmed
 - P58 Ponds with Great Crested Newt Absence Confirmed
 - P101 Ponds Where Great Crested Newt Status Unknown



Rev	Status	Rev. Date	Purpose of revision	Drawn	Checked	Approved
01	S2	21.03.18	PEIR	JN	KB	DH

Client: **highways england**

ARCADIS

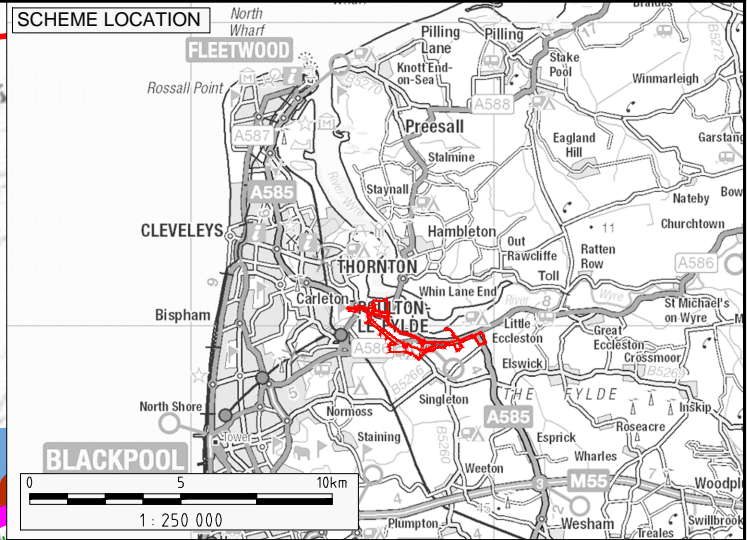
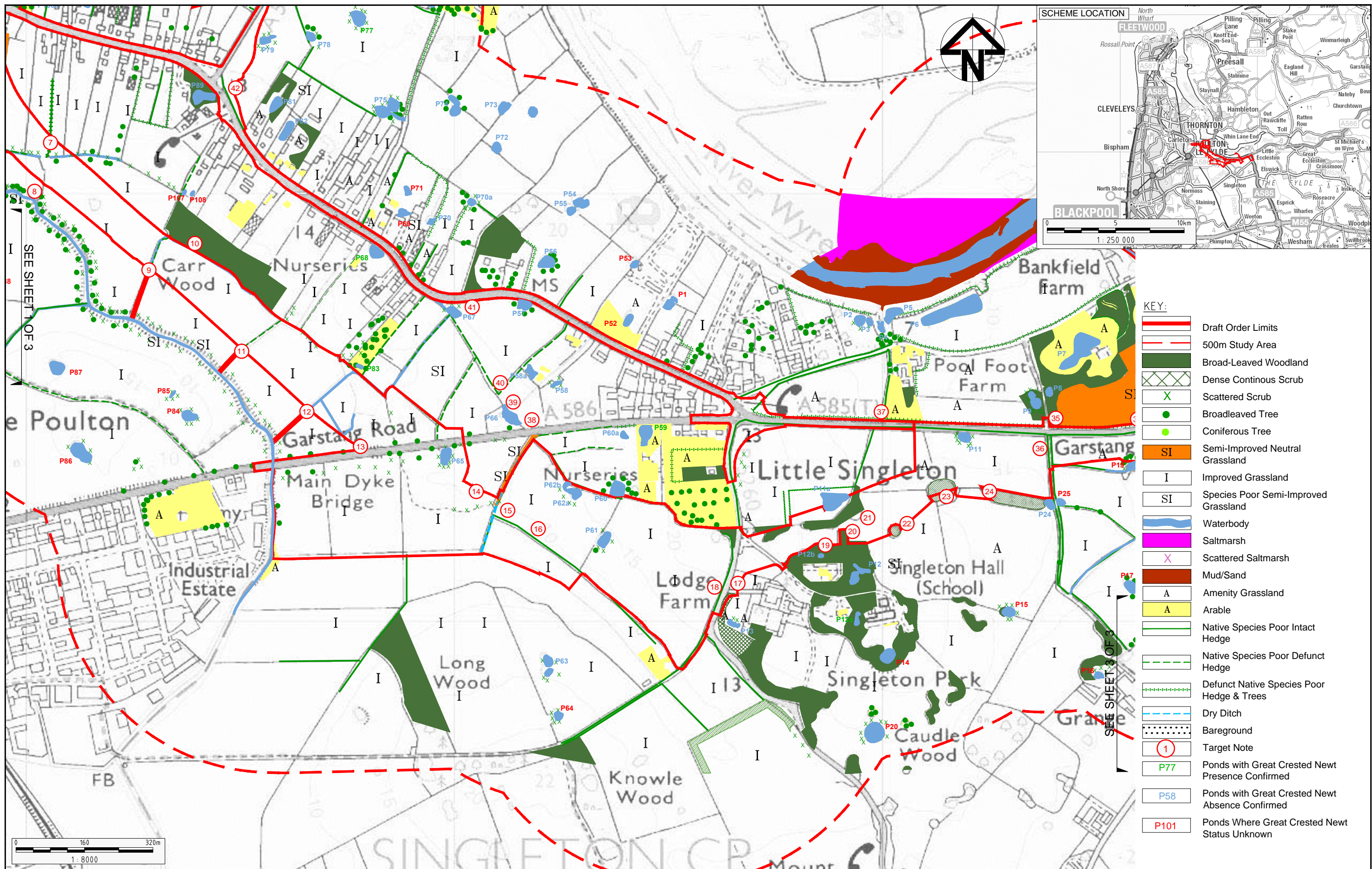
Registered office: Manning House, 22 Carfax Place, London, SW1P 1JA

Coordinating office: 5th Floor, 401 Finsbury Street, Richmond Park, Starring, W3 6GA, London, Tel: 44 (0)1925 800700

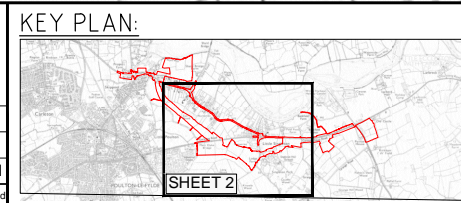
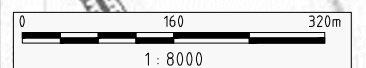
Project: **A585 WINDY HARBOUR TO SKIPPOOL IMPROVEMENT SCHEME**

Drawing title: **BIODIVERSITY: PHASE 1 HABITAT SURVEY SHEET 1 OF 3**

PRELIMINARY ENVIRONMENTAL INFORMATION REPORT		
Scale	1:8 000	Date - 21.03.18
Drawn By	J.NORMAN	
Checked By	K.BURROWS	
Approved By	D.HOUD	
Project No.	UA009921	Original Size
Drawing number	FIGURE 7.3	Rev
		01



- KEY:**
- Draft Order Limits
 - 500m Study Area
 - Broad-Leaved Woodland
 - Dense Continuous Scrub
 - Scattered Scrub
 - Broadleaved Tree
 - Coniferous Tree
 - SI Semi-Improved Neutral Grassland
 - I Improved Grassland
 - SI Species Pool Semi-Improved Grassland
 - Waterbody
 - Saltmarsh
 - Scattered Saltmarsh
 - Mud/Sand
 - A Amenity Grassland
 - A Arable
 - Native Species Pool Intact Hedge
 - Native Species Pool Defunct Hedge
 - Defunct Native Species Pool Hedge & Trees
 - Dry Ditch
 - Bareground
 - Target Note
 - Ponds with Great Crested Newt Presence Confirmed
 - Ponds with Great Crested Newt Absence Confirmed
 - Ponds Where Great Crested Newt Status Unknown



Rev	Status	Rev. Date	Purpose of revision	Drawn	Checked	Approved
01	S2	21.03.18	PEIR	JN	KB	DH

Client: **highways england**

ARCADIS

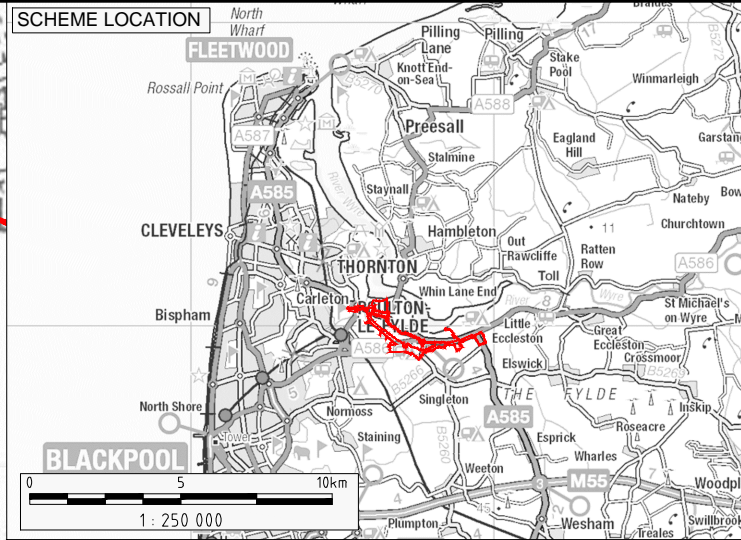
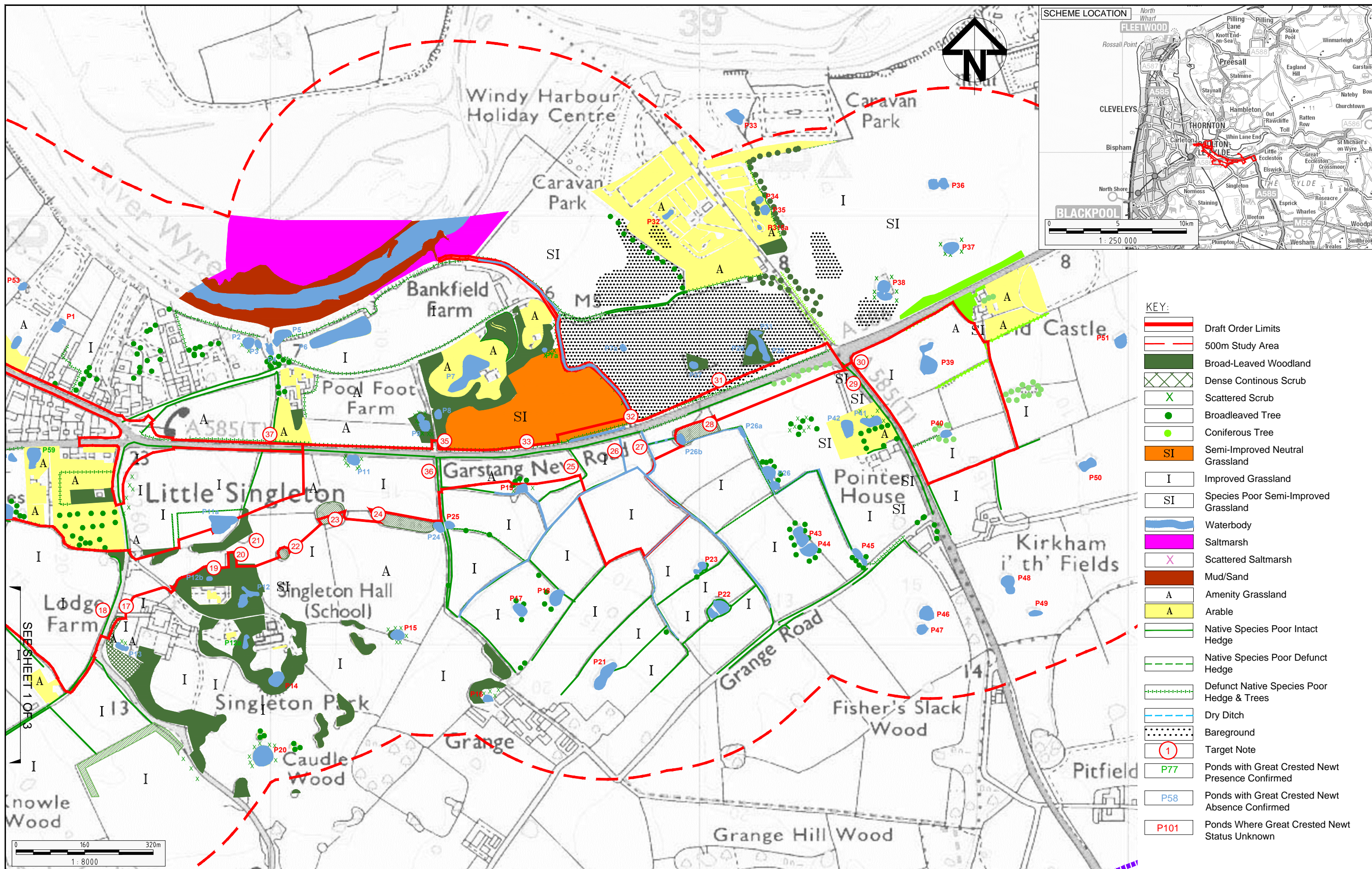
Registered office: Manning House, 22 Carisle Place, London, SW1P 1JA
 Coordinating office: 5th Floor 401 Finsbury Street, Birmingham, B3 6GA, Tel: 44 (0)121 625 00700

Project: **A585 WINDY HARBOUR TO SKIPPOOL IMPROVEMENT SCHEME**

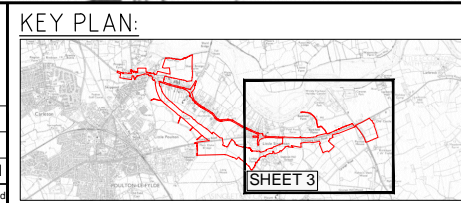
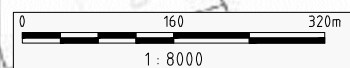
Drawing title: **BIODIVERSITY: PHASE 1 HABITAT SURVEY SHEET 2 OF 3**

PRELIMINARY ENVIRONMENTAL INFORMATION REPORT

Scale	1:8 000	Date	21.03.18
Drawn By	J.NORMAN		
Checked By	K.BURROWS		
Approved By	D.HOUD		
Project No.	UA009921	Original Size	A3
Drawing number	FIGURE 7.3	Rev	01



- KEY:**
- Draft Order Limits
 - 500m Study Area
 - Broad-Leaved Woodland
 - Dense Continuous Scrub
 - Scattered Scrub
 - Broadleaved Tree
 - Coniferous Tree
 - Semi-Improved Neutral Grassland
 - Improved Grassland
 - Species Pool Semi-Improved Grassland
 - Waterbody
 - Saltmarsh
 - Scattered Saltmarsh
 - Mud/Sand
 - Amenity Grassland
 - Arable
 - Native Species Pool Intact Hedge
 - Native Species Pool Defunct Hedge
 - Defunct Native Species Pool Hedge & Trees
 - Dry Ditch
 - Bareground
 - Target Note
 - Ponds with Great Crested Newt Presence Confirmed
 - Ponds with Great Crested Newt Absence Confirmed
 - Ponds Where Great Crested Newt Status Unknown



Rev	Status	Rev. Date	Purpose of revision	Drawn	Checked	Approved
01	S2	21.03.18	PEIR	JN	KB	DH

Client: **highways england**

ARCADIS

Registered office: 22 Carisle Place, London, SW1P 1JA
 Coordinating office: 2th Floor 401 Finsbury Street, Birmingham, B3 6GA
 Tel: 44 (0)121 600700

Project: **A585 WINDY HARBOUR TO SKIPPOOL IMPROVEMENT SCHEME**

Drawing title: **BIODIVERSITY: PHASE 1 HABITAT SURVEY SHEET 3 OF 3**

Drawing status: PRELIMINARY ENVIRONMENTAL INFORMATION REPORT		
Scale: 1:8 000	Date: 21.03.18	
Drawn By: J.NORMAN	Checked By: K.BURROWS	
Approved By: D.HOUD		
Project No: UA009921	Original Size: A3	Rev: 01
Drawing number: FIGURE 7.3		