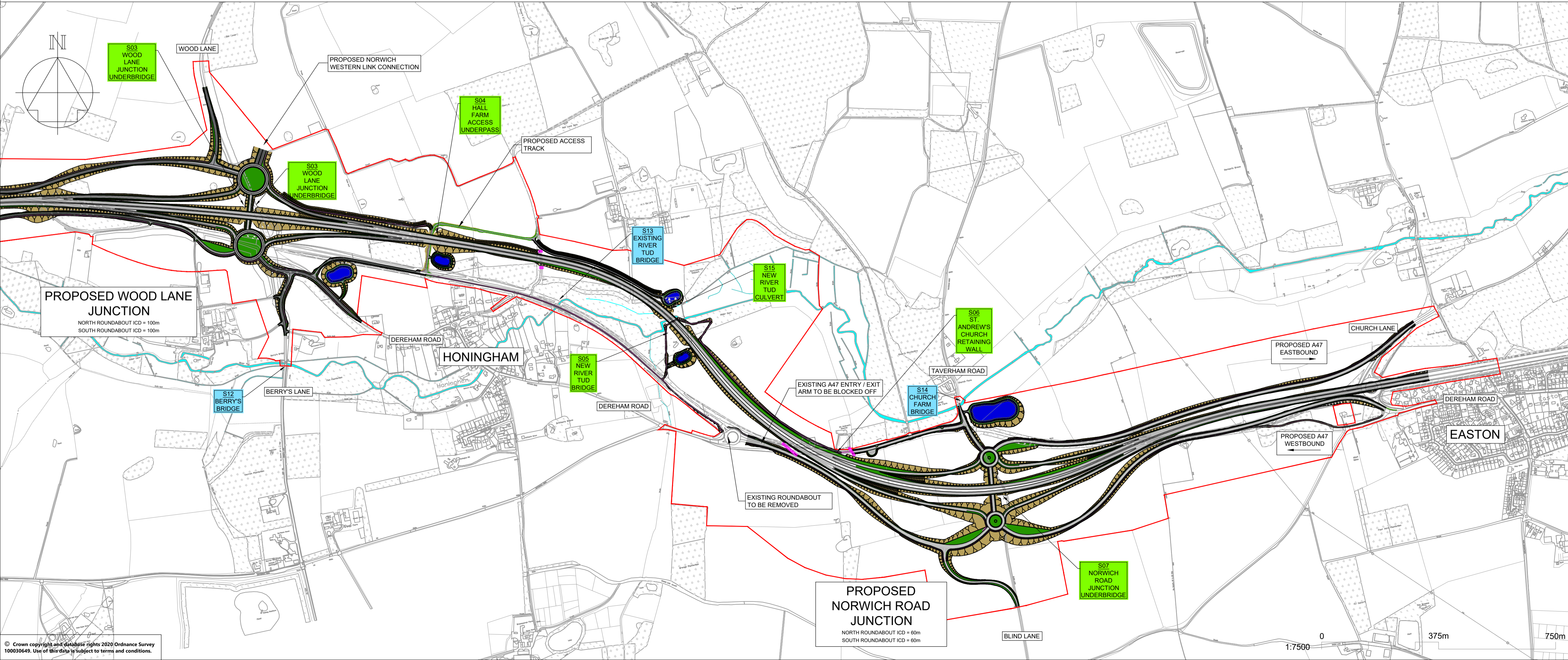
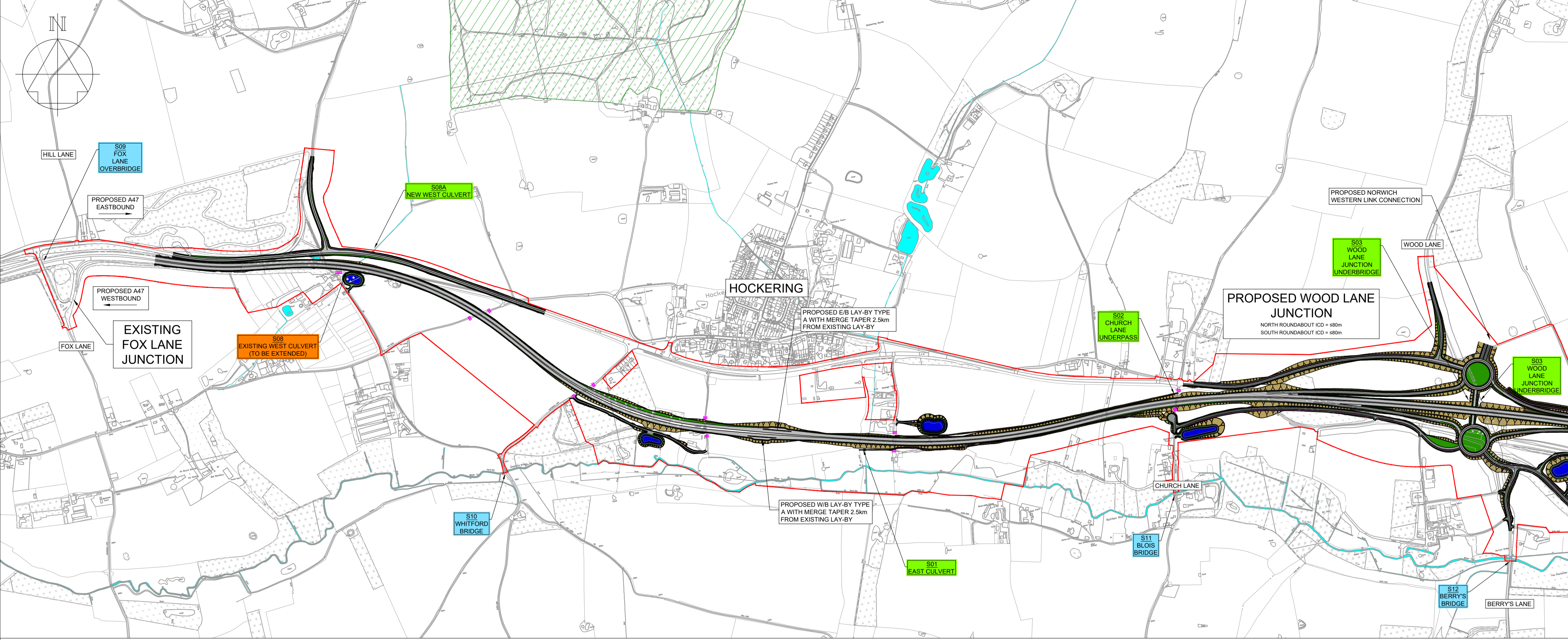


This drawing should not be relied on or used in circumstances other than those for which it was originally prepared and for which Sweco UK Ltd was commissioned. Sweco UK Ltd accepts no responsibility for this drawing for any party other than the person to whom it was commissioned. This drawing has been prepared on behalf of Galliford Try by Sweco UK Ltd for the stated project or named part thereof and should not be relied upon or used for any other project without an independent check being carried out by its suitability and prior written authority of Galliford Try being obtained. Sweco UK Ltd accepts no responsibility or liability for the consequences of this drawing being used for a purpose other than the purpose for which it was commissioned. Any person using or relying on this drawing for such other purpose agrees, and will by such use or reliance be taken to confirm his/her agreement to indemnify Sweco UK Ltd for all loss or damage resulting therefrom.



- NOTES**
- DESIGNED IN ACCORDANCE WITH DMRB.
 - MAINLINE DESIGNED TO 120kph.
 - JUNCTIONS ARE DESIGNED IN ACCORDANCE WITH THE RELEVANT DMRB VOLUME 6 CD 116, CD 122 AND CD 123.
 - STRUCTURES ARE DESIGNED IN ACCORDANCE WITH THE RELEVANT DMRB STANDARDS.
 - LAY-BYS ARE DESIGNED IN ACCORDANCE WITH THE RELEVANT DMRB VOLUME 6 CD 169.

KEY TO SYMBOLS

	ENVIRONMENTAL SCOPING BOUNDARY
	ROUTE SEVERED
	RIVER TUD / WATERCOURSES
	PAVED AREAS
	VERGE
	EARTHWORKS
	PROPOSED DRAINAGE BASIN
	EXISTING STRUCTURE (NO CHANGE)
	EXISTING STRUCTURE (MODIFIED)
	NEW STRUCTURE
	SSSI - HOCKERING WOOD

P01	19/11/19	DESIGN FIX A	BR	BR	BR
P02	14/02/20	SUITABLE FOR INFORMATION	JM	JM	JM
REV	DATE	REVISION NOTE	ORG	CHKD	APPD

DESIGNER

CONTRACTOR

CLIENT

PROJECT TITLE
A47 NORTH TUDDENHAM TO EASTON

PROJECT STAGE
PCF STAGE 3

DRAWING TITLE
JUNCTION AND SIDEROADS CONCEPT WITH NORWICH WESTERN LINK

SUITABILITY
SUITABLE FOR INFORMATION

SHEET SIZE	SCALE	STATUS	REVISION
A1	1:7500	S2	P02

DRAWING NUMBER
HE551489-GTY-HGN-000-DR-CH-30030