

PLAN - OPTION 1
NTS

NOTES

- THIS DRAWING IS TO BE READ IN CONJUNCTION WITH ALL OTHER RELEVANT DOCUMENTATION.
- DO NOT SCALE FROM THIS DRAWING, USE ONLY PRINTED DIMENSIONS.
- ALL DIMENSIONS, CHAINAGES, LEVELS AND COORDINATES ARE IN METRES UNLESS DEFINED OTHERWISE.

LEGEND

- PROPOSED ROAD
- PROPOSED BRIDGE
- PROPOSED JUNCTION AND LINKS
- PROPOSED FARM TRACK/SIDE ROAD
- SIDE ROADS SEVERED
- REALIGNED FOOTPATH
- STOPPED UP ROAD

HAZARDS

- HV = HIGH VOLTAGE ELECTRICITY
- G = GAS
- W = WATER
- BT = TELECOMMUNICATIONS
- COM = COMMUNICATIONS

CULTURAL HERITAGE

- LISTED BUILDING
- SCHEDULED MONUMENT

ENVIRONMENTAL CONSTRAINTS

- SITE OF SPECIAL SCIENTIFIC INTEREST (SSSI)

UK BIODIVERSITY ACTION PLAN (BAP) PRIORITY HABITATS

- PRIORITY HABITATS
- TRADITIONAL ORCHARDS

WATER COURSES

- DRAINS AND OTHER MINOR COURSES
- PONDS AND OTHER ACCUMULATION AREAS

DRAFT

Level Datum = 16.000

PROPOSED	EXISTING GROUND LEVEL	HORIZ. ALIGN.	VERTICAL ALIGN.	LVL. DIFF	CHAINAGE
20.000	20.000	D=319.138m	L=134.407m	3.379	600.000
22.641	20.000	R=3700.000m	R=9500.000m	-2.641	650.000
21.590	20.000	L=101.544m	L=138.244m	1.589	700.000
20.274	20.000	D=110.434m	R=21000.000m	0.274	750.000
19.400	19.487	CL=110.000m	L=157.018m	-0.086	800.000
19.202	19.462	R=10000.000m	R=167.501m	0.741	850.000
19.510	18.551	CL=110.000m	L=222.799m	0.959	900.000
19.480	17.930	R=110.000m	L=262.663m	1.550	950.000
19.001	16.791	CL=110.000m	R=18200.000m	2.210	1000.000
18.512	16.783	R=110.000m	L=1000.000m	1.729	1050.000
18.286	18.973	D=142.088m	R=54500.000m	-0.687	1100.000
18.323	20.000	CL=110.000m	L=163.649m	-1.677	1150.000
18.553	20.000	R=110.000m	R=363400.000m	-1.447	1200.000
18.503	20.000	D=183.065m	L=177.811m	-1.098	1250.000
20.020	20.000	CL=110.000m	R=94700.000m	-0.630	1300.000
21.073	21.032	R=1129.000m	L=241.007m	0.041	1350.000
22.474	23.082	L=278.058m	L=312.901m	-0.608	1400.000
23.719	25.000	R=110.000m	P=0.177%	-1.282	1450.000
24.713	25.000	D=142.088m	L=264.859m	-0.287	1500.000
25.458	25.000	R=110.000m	R=18200.000m	0.457	1550.000
25.952	25.000	CL=110.000m	L=226.021m	0.952	1600.000
26.402	25.000	R=110.000m	L=241.007m	1.401	1650.000
26.856	25.000	D=183.065m	L=312.901m	1.855	1700.000
27.172	25.000	CL=110.000m	P=0.177%	2.171	1750.000
27.350	25.000	R=110.000m	L=271.791m	2.350	1800.000
27.392	25.000	D=142.088m	R=18200.000m	2.391	1850.000
27.296	25.000	CL=110.000m	L=226.021m	2.296	1900.000
27.172	25.000	R=110.000m	L=241.007m	2.171	1950.000
27.286	25.000	D=183.065m	L=312.901m	2.286	2000.000
27.596	25.000	CL=110.000m	P=0.177%	2.596	2050.000
27.812	25.000	R=110.000m	L=226.021m	2.811	2100.000
27.890	25.000	D=142.088m	L=271.791m	2.890	2150.000
27.831	25.000	R=110.000m	R=18200.000m	2.831	2200.000
27.845	25.000	CL=110.000m	L=226.021m	2.845	2250.000
27.531	25.000	R=110.000m	L=241.007m	2.531	2300.000
27.315	25.000	D=183.065m	L=312.901m	2.315	2350.000
27.009	25.000	CL=110.000m	P=0.177%	2.009	2400.000
26.680	25.000	R=110.000m	L=226.021m	1.680	2450.000
26.367	25.000	D=142.088m	L=271.791m	1.367	2500.000
26.100	25.000	R=110.000m	R=18200.000m	1.100	2550.000
25.879	25.000	CL=110.000m	L=226.021m	0.878	2600.000
25.769	25.000	R=110.000m	L=241.007m	0.768	2650.000
25.830	25.000	D=183.065m	L=312.901m	0.830	2700.000
25.902	25.000	CL=110.000m	P=0.177%	0.902	2750.000
25.982	25.000	R=110.000m	L=226.021m	0.982	2800.000
26.069	25.000	D=142.088m	L=271.791m	1.068	2850.000
26.157	25.000	R=110.000m	R=18200.000m	1.157	2900.000
26.246	25.000	CL=110.000m	L=226.021m	1.245	2950.000
26.334	25.000	R=110.000m	L=241.007m	1.334	3000.000
26.423	25.000	D=183.065m	L=312.901m	1.423	3100.000
26.512	25.000	CL=110.000m	P=0.177%	1.511	3150.000
26.612	25.000	R=110.000m	L=226.021m	1.611	3200.000
26.738	25.000	D=142.088m	L=271.791m	1.738	3250.000
26.891	25.000	R=110.000m	R=18200.000m	1.890	3300.000
27.070	25.000	CL=110.000m	L=226.021m	2.070	3350.000
27.282	25.000	R=110.000m	L=241.007m	2.282	3400.000
27.344	25.000	D=183.065m	L=312.901m	2.344	3450.000
27.289	25.000	CL=110.000m	P=0.177%	2.289	3500.000
27.097	25.000	R=110.000m	L=226.021m	2.096	3550.000
26.767	25.000	D=142.088m	L=271.791m	1.767	3600.000
26.324	25.000	R=110.000m	R=18200.000m	1.324	3650.000
25.870	25.000	CL=110.000m	L=226.021m	0.869	3700.000
25.416	25.000	R=110.000m	L=241.007m	0.415	3750.000
24.981	24.866	D=183.065m	L=312.901m	-0.004	3800.000
24.507	24.477	CL=110.000m	P=0.177%	0.030	3850.000
24.063	23.986	R=110.000m	L=226.021m	0.067	3900.000
23.606	23.522	D=142.088m	L=271.791m	0.083	3950.000
23.256	23.010	R=110.000m	R=18200.000m	0.247	4000.000
22.895	22.649	CL=110.000m	L=226.021m	0.247	4050.000

LONG SECTION - OPTION 1
HORIZONTAL = NTS
VERTICAL = NTS

Rev	Revision details	Drwn	Chkd	Appd	Date

Designed: GC Date: .
 Drawn: MV Date: .
 Checked: JOC Date: .
 Approved: DH Date: .

Copyright © Amey

www.amey.co.uk

Client
 Highways England
 Woodlands
 Manton Lane
 Bedford
 MK41 7LW

Working on behalf of

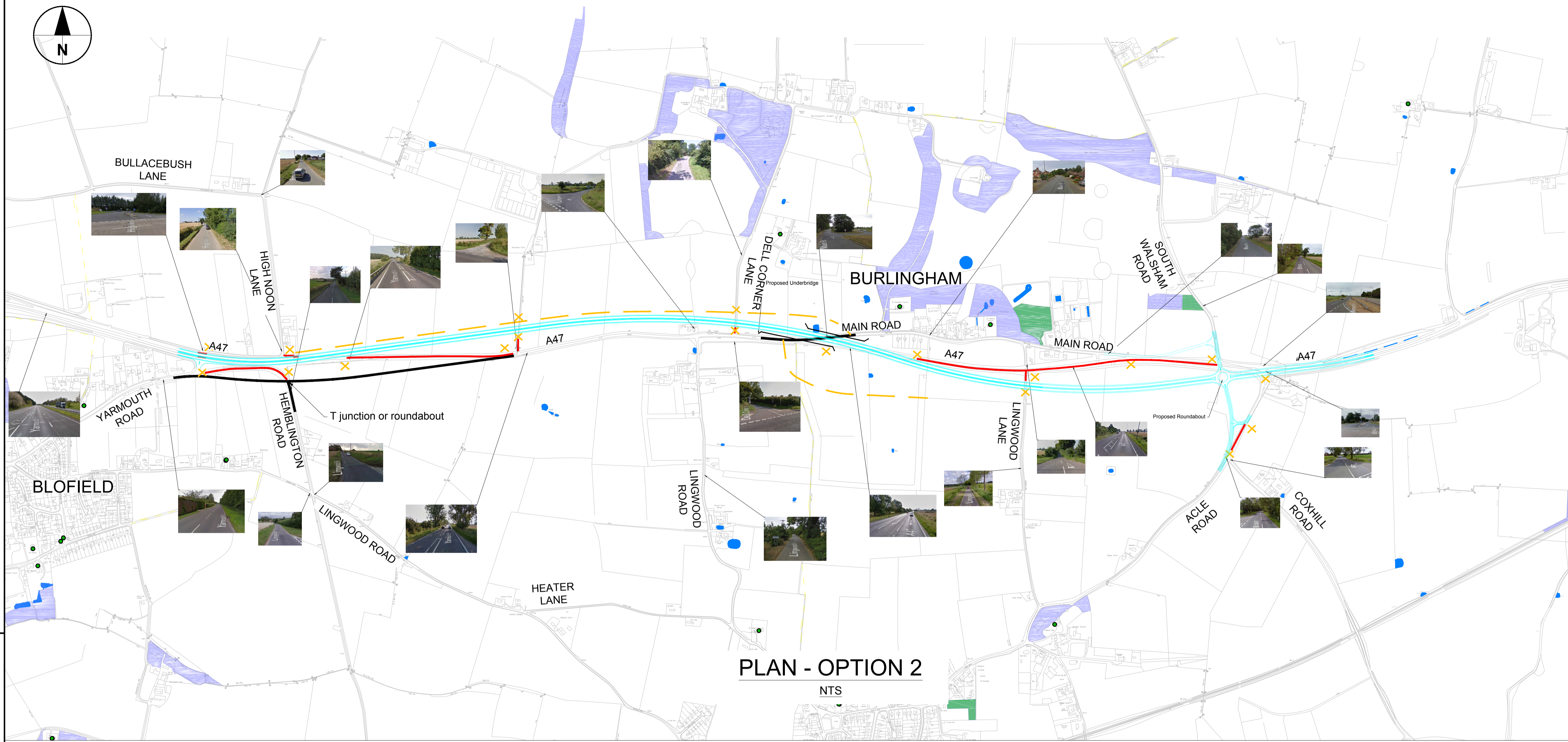
Project Name
A47 CORRIDOR - STAGE 2

Drawing Title
**A47 SCHEMES
 BLOFIELD TO NORTH BURLINGHAM
 OPTION 1
 PLAN AND LONG. SECTION**

Original Drawing Size : A1 Scale : NTS
 Dimensions : -

Drawing Status
WORK IN PROGRESS Suitability
 S0

Drawing No
 HE551490-AMY-HGN-BB_STG2-DR-HE-0006 Rev
 -



PLAN - OPTION 2
NTS

- NOTES**
- THIS DRAWING IS TO BE READ IN CONJUNCTION WITH ALL OTHER RELEVANT DOCUMENTATION.
 - DO NOT SCALE FROM THIS DRAWING. USE ONLY PRINTED DIMENSIONS.
 - ALL DIMENSIONS, CHAINAGES, LEVELS AND COORDINATES ARE IN METRES UNLESS DEFINED OTHERWISE.
 - THIS DRAWING IS TO BE USED ONLY FOR THE PURPOSE OF ISSUE THAT IT WAS ISSUED FOR AND IS SUBJECT TO AMENDMENT.

- LEGEND**
- PROPOSED ROAD LINE
 - PROPOSED BRIDGE
 - PROPOSED JUNCTION AND LINKS
 - PROPOSED FARM TRACK/SIDE ROAD
 - SIDE ROADS SEVERED
 - STOPPED UP ROAD

- HAZARDS**
- HV = HIGH VOLTAGE ELECTRICITY
 - G = GAS
 - W = WATER
 - BT = TELECOMMUNICATIONS
 - COM = COMMUNICATIONS

- CULTURAL HERITAGE**
- LISTED BUILDING
 - SCHEDULED MONUMENT

- ENVIRONMENTAL CONSTRAINTS**
- SITE OF SPECIAL SCIENTIFIC INTEREST (SSSI)

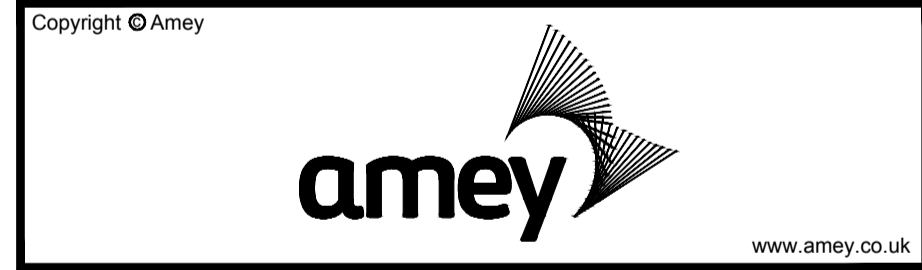
- UK BIODIVERSITY ACTION PLAN (BAP) PRIORITY HABITATS**
- PRIORITY HABITATS
 - TRADITIONAL ORCHARDS

*ADDITIONAL PRIORITY HABITATS MAY BE PRESENT, BUT OF LOWER CONFIDENCE OF DETERMINATION AND MAPPING.

- WATER COURSES**
- DRAINS AND OTHER MINOR COURSES
 - PONDS AND OTHER ACCUMULATION AREAS

DRAFT

Rev	Revision details	Drwn	Chkd	Appd	Date



Client
Highways England
Woodlands
Manton Lane
Bedford
MK41 7LW

Working on behalf of
highways england

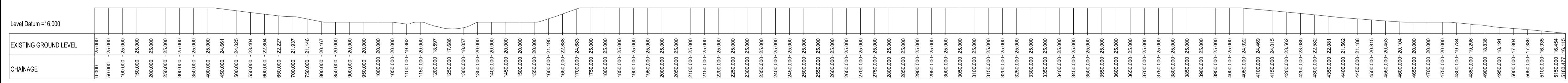
Project Name
A47 CORRIDOR - STAGE 2

Drawing Title
**A47 SCHEMES
BLOFIELD TO NORTH BURLINGHAM
OPTION 2
PLAN AND LONG. SECTION**

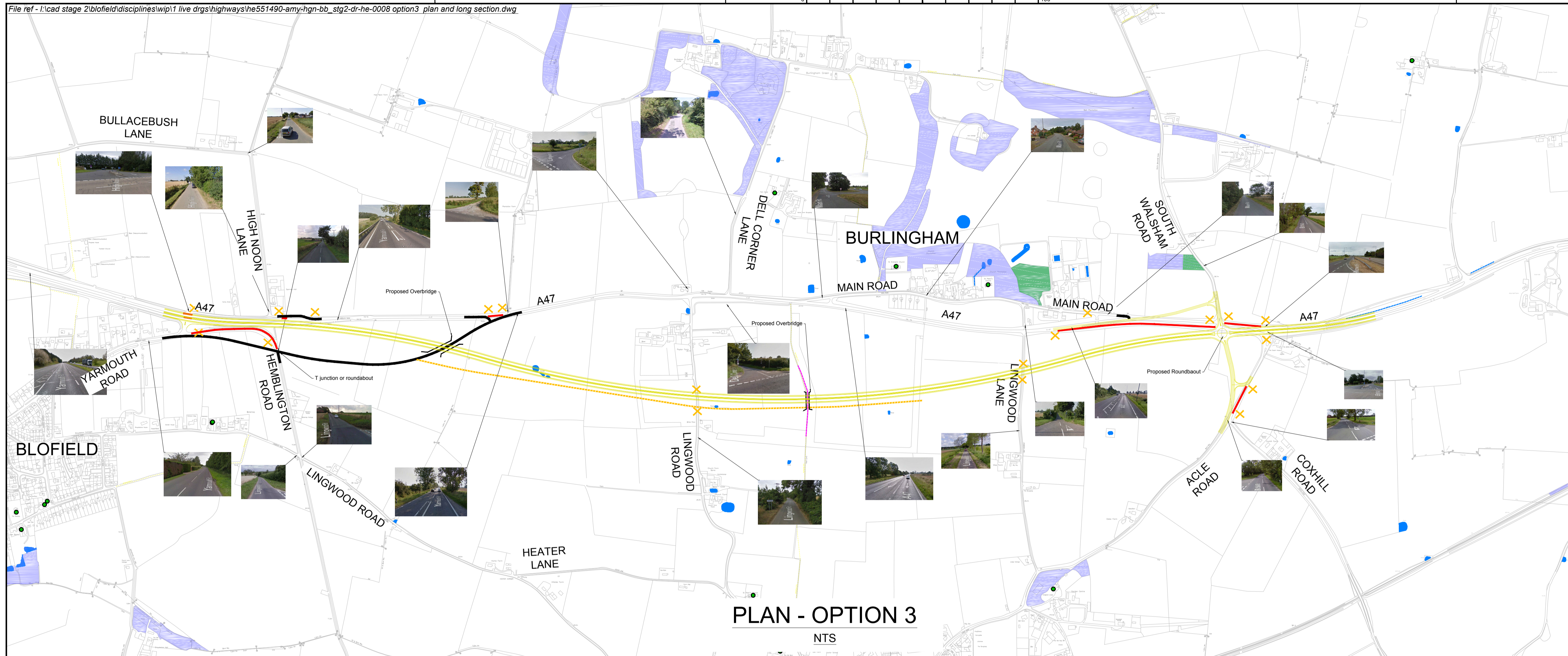
Original Drawing Size : A1 Scale : NTS
Dimensions : -

Drawing Status
WORK IN PROGRESS Suitability
S0

Drawing No
HE551490-AMY-HGN-BB_STG2-DR-HE-0007 Rev
-



LONG SECTION - OPTION 2
HORIZONTAL = NTS
VERTICAL = NTS



- NOTES**
- THIS DRAWING IS TO BE READ IN CONJUNCTION WITH ALL OTHER RELEVANT DOCUMENTATION.
 - DO NOT SCALE FROM THIS DRAWING. USE ONLY PRINTED DIMENSIONS.
 - ALL DIMENSIONS, CHAINAGES, LEVELS AND COORDINATES ARE IN METRES UNLESS DEFINED OTHERWISE.

- LEGEND**
- PROPOSED ROAD LINE
 - PROPOSED BRIDGE
 - PROPOSED JUNCTION AND LINKS
 - PROPOSED FARM TRACK/SIDE ROAD
 - SIDE ROADS SEVERED
 - REALIGNED FOOTPATH
 - STOPPED UP ROAD

- HAZARDS**
- HV = HIGH VOLTAGE ELECTRICITY
 - G = GAS
 - W = WATER
 - BT = TELECOMMUNICATIONS
 - COM = COMMUNICATIONS

- CULTURAL HERITAGE**
- LISTED BUILDING
 - SCHEDULED MONUMENT

- ENVIRONMENTAL CONSTRAINTS**
- SITE OF SPECIAL SCIENTIFIC INTEREST (SSSI)

- UK BIODIVERSITY ACTION PLAN (BAP) PRIORITY HABITATS**
- PRIORITY HABITATS
 - TRADITIONAL ORCHARDS

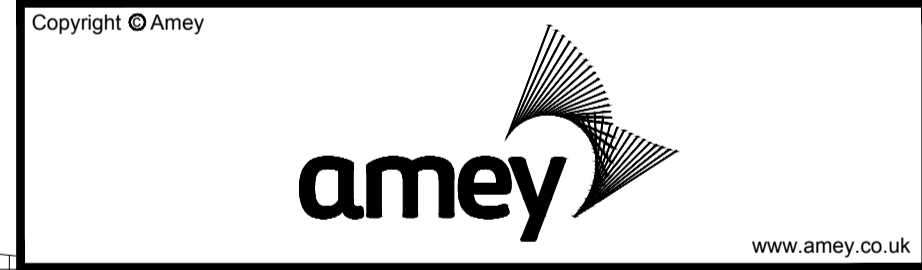
*ADDITIONAL PRIORITY HABITATS MAY BE PRESENT, BUT OF LOWER CONFIDENCE OF DETERMINATION AND MAPPING.

- WATER COURSES**
- DRAINS AND OTHER MINOR COURSES
 - PONDS AND OTHER ACCUMULATION AREAS

DRAFT

Rev	Revision details	Drwn	Chkd	Appd	Date

Designed: GC Date: .
 Drawn: JAR Date: .
 Checked: JOC Date: .
 Approved: DH Date: .



EXISTING GROUND LEVEL	CHAINAGE
24.000	0+000
25.000	50.000
26.000	100.000
25.000	150.000
26.000	200.000
25.000	250.000
26.000	300.000
25.000	350.000
26.000	400.000
24.681	450.000
24.025	500.000
24.494	550.000
22.854	600.000
22.227	650.000
21.037	700.000
21.143	750.000
20.132	800.000
20.000	850.000
20.000	900.000
20.000	950.000
18.443	1000.000
16.445	1100.000
15.139	1150.000
15.000	1200.000
15.000	1250.000
16.560	1300.000
16.938	1350.000
20.209	1400.000
20.692	1450.000
21.144	1500.000
21.579	1550.000
21.700	1600.000
22.000	1650.000
22.000	1700.000
22.000	1750.000
22.000	1800.000
22.000	1850.000
22.000	1900.000
22.000	1950.000
22.000	2000.000
22.000	2050.000
22.000	2100.000
22.000	2150.000
22.000	2200.000
22.000	2250.000
22.000	2300.000
22.000	2350.000
22.000	2400.000
22.000	2450.000
22.000	2500.000
22.000	2550.000
22.000	2600.000
22.000	2650.000
22.000	2700.000
22.000	2750.000
22.000	2800.000
22.000	2850.000
22.000	2900.000
22.000	2950.000
22.000	3000.000
22.000	3050.000
22.000	3100.000
22.000	3150.000
22.000	3200.000
22.000	3250.000
22.000	3300.000
22.000	3350.000
22.000	3400.000
22.000	3450.000
22.000	3500.000
22.000	3550.000
22.000	3600.000
22.000	3650.000
22.000	3700.000
22.000	3750.000
22.000	3800.000
22.000	3850.000
22.000	3900.000
22.000	3950.000
22.000	4000.000
22.000	4050.000
22.000	4100.000
22.000	4150.000
22.000	4200.000
22.000	4250.000
22.000	4300.000
22.000	4350.000
22.000	4400.000
22.000	4450.000
22.000	4500.000
22.000	4550.000
22.000	4600.000
22.000	4650.000
22.000	4700.000
22.000	4750.000
22.000	4800.000
22.000	4850.000
22.000	4900.000
22.000	4950.000
22.000	5000.000
22.000	5050.000
22.000	5100.000
22.000	5150.000

LONG SECTION - OPTION 3
 HORIZONTAL = NTS
 VERTICAL = NTS

Client
 Highways England
 Woodlands
 Manton Lane
 Bedford
 MK41 7LW

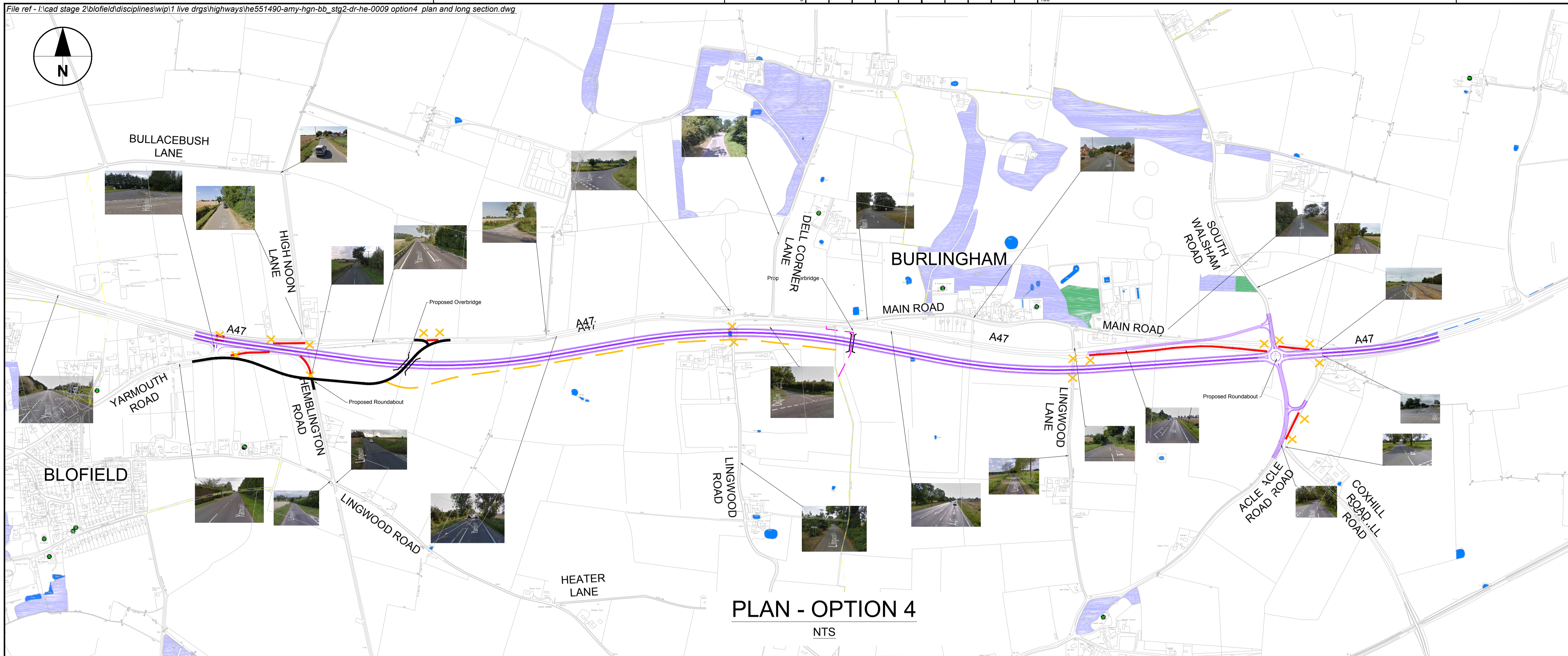
Project Name
A47 CORRIDOR - STAGE 2

Drawing Title
**A47 SCHEMES
 BLOFIELD TO NORTH BURLINGHAM
 OPTION 3
 PLAN AND LONG. SECTION**

Original Drawing Size : A1 Scale : NTS
 Dimensions : -

Drawing Status
WORK IN PROGRESS Suitability
 S0

Drawing No
 HE551490-AMY-HGN-BB_STG2-DR-HE-0008 Rev
 -



PLAN - OPTION 4
NTS

NOTES

- THIS DRAWING IS TO BE READ IN CONJUNCTION WITH ALL OTHER RELEVANT DOCUMENTATION.
- DO NOT SCALE FROM THIS DRAWING, USE ONLY PRINTED DIMENSIONS.
- ALL DIMENSIONS, CHAINAGES, LEVELS AND COORDINATES ARE IN METRES UNLESS DEFINED OTHERWISE.

LEGEND

- PROPOSED ROAD LINE
- PROPOSED BRIDGE
- PROPOSED JUNCTION AND LINKS
- PROPOSED FARM TRACK/SIDE ROAD
- SIDE ROADS SEVERED
- REALIGNED FOOTPATH
- STOPPED UP ROAD

HAZARDS

- HV = HIGH VOLTAGE ELECTRICITY
- G = GAS
- W = WATER
- BT = TELECOMMUNICATIONS
- COM = COMMUNICATIONS

CULTURAL HERITAGE

- LISTED BUILDING
- SCHEDULED MONUMENT

ENVIRONMENTAL CONSTRAINTS

- SITE OF SPECIAL SCIENTIFIC INTEREST (SSSI)

UK BIODIVERSITY ACTION PLAN (BAP) PRIORITY HABITATS

- PRIORITY HABITATS
- TRADITIONAL ORCHARDS

WATER COURSES

- DRAINS AND OTHER MINOR COURSES
- PONDS AND OTHER ACCUMULATION AREAS

HAZARDS

CULTURAL HERITAGE

ENVIRONMENTAL CONSTRAINTS

UK BIODIVERSITY ACTION PLAN (BAP) PRIORITY HABITATS

WATER COURSES

DRAFT

Rev	Revision details	Drwn	Chkd	Appd	Date

Designed: GC Date: .
 Drawn: JAR Date: .
 Checked: JOC Date: .
 Approved: DH Date: .

Copyright © Amey

www.amey.co.uk

Client
 Highways England
 Woodlands
 Manton Lane
 Bedford
 MK41 7LW

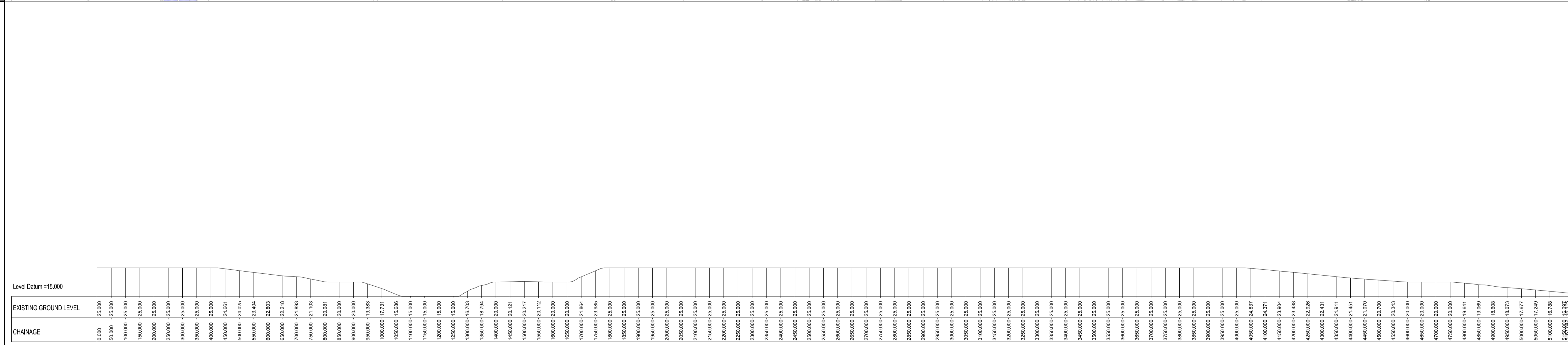
Project Name
A47 CORRIDOR - STAGE 2

Drawing Title
**A47 SCHEMES
 BLOFIELD TO NORTH BURLINGHAM
 OPTION 4
 PLAN AND LONG. SECTION**

Original Drawing Size : A1	Scale : NTS
Dimensions : -	

Working Status WORK IN PROGRESS	Suitability S0
---	-------------------

Drawing No HE551490-AMY-HGN-BB_STG2-DR-HE-0009	Rev -
---	----------



LONG SECTION - OPTION 4
HORIZONTAL = NTS
VERTICAL = NTS