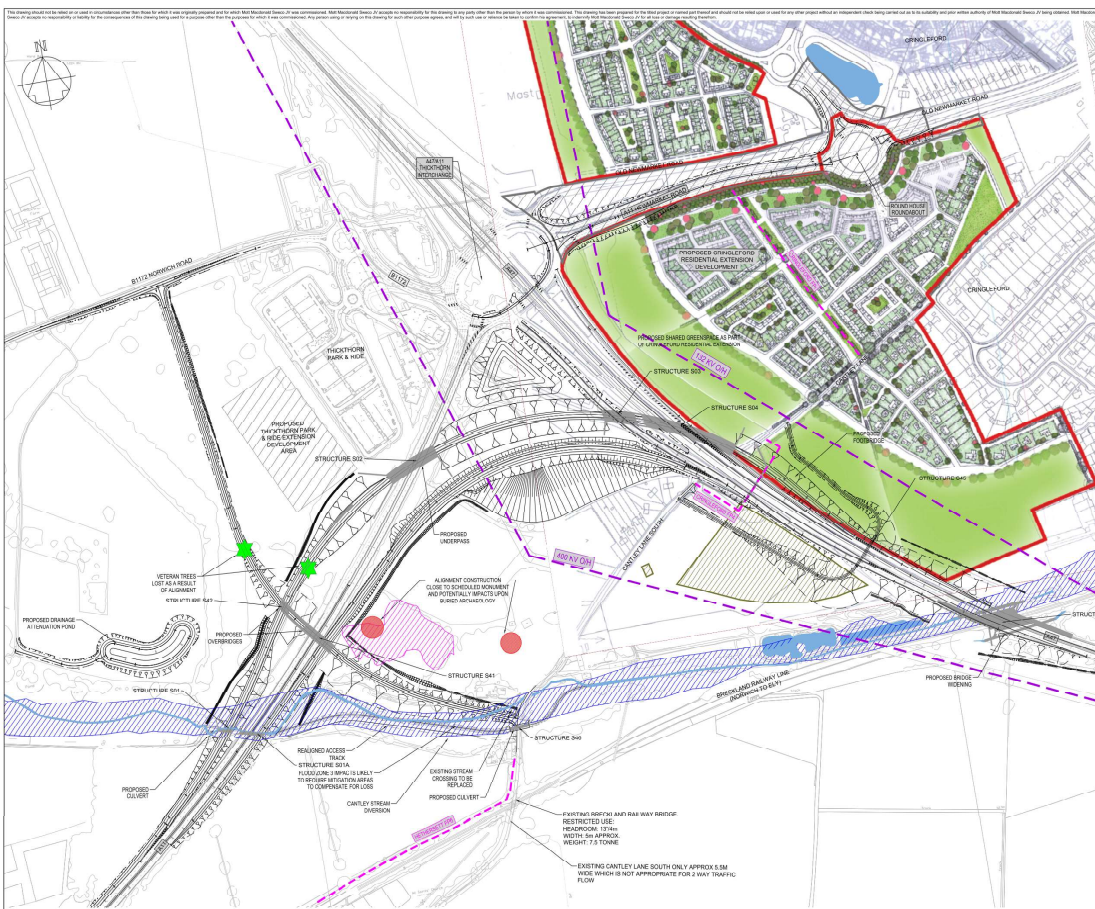


## Appendix A Drawings

Drawing Number:	Drawing Title:
HE551492-MMSJV-HGN-000-DR-CH-00001	Cantley Lane Option 3 - General Arrangement
HE551492-MMSJV-HGN-000-DR-CH-00002	Cantley Lane Option 4 - General Arrangement
HE551492-MMSJV-HGN-000-DR-CH-00007	Cantley Lane Option 5 - General Arrangement
HE551492-MMSJV-HGN-000-DR-CH-00003	Cantley Lane Option 6 - General Arrangement
HE551492-MMSJV-HGN-000-DR-CH-00004	Cantley Lane Option 7 - General Arrangement





**Notes**

1. ALL DIMENSIONS ARE BASED UPON ORDNANCE SURVEY AND ARE SUBJECT TO CONFIRMATION BY TOPOGRAPHICAL SURVEY OR SIMILAR.
2. ALL DIMENSIONS ARE IN METERS UNLESS OTHERWISE STATED IN THIS OPTION ARRANGEMENT DETAILS.
3. THE ALIGNMENT DESIGN IS IN ACCORDANCE WITH DMRE.
4. DIMENSIONS FOR OVERHEAD CABLES ARE DERIVED FROM THE SCHEME.
5. THE ALIGNMENT IMPACTS UPON THE EXISTING CONTAMINATED LAND. LATEST SCHEDULED MONUMENTS AND VETERAN TREES:
  - i. CANTLEY STREAM WILL REQUIRE DIVERTING.
  - ii. FOOTPATH ACROSS THE EXISTING ARE REPLACED.
  - iii. FOR DETAILS OF DEPARTURES REFER TO DRAWING NO HES14932.
  - iv. FOR DETAILS OF DEPARTURES REFER TO DRAWING NO HES14933.
6. ALL DIMENSIONS FOR OVERHEAD CABLES ARE SUBJECT TO CONFIRMATION BY TOPOGRAPHICAL SURVEY.

**Key to symbols**

- ENVIRONMENTAL AGENCY FLOOD ZONE 3
- SCHEDULED MONUMENT
- CONTAMINATED LAND
- OVERHEAD CABLES
- EXISTING FOOTPATH
- VETERAN TREE
- WATER BODY
- AREA OF HISTORICAL GRAVEL PIT
- HIGHWAY IMPROVEMENTS TO BE UNDERTAKEN AS PART OF DEVELOPMENT
- BOUNDARY AS SUBMITTED WITHIN ENVIRONMENTAL SCOPING REPORT
- EXTENT OF SCHEME

REV	DATE	REVISION DETAILS	DESIGN	CHK'D	APP'D
001	11/03/21	FOR REVIEW & COMMENT	MS	MS	MS
002	11/03/21	FOR REVIEW & COMMENT	MS	MS	MS
003	11/03/21	FOR REVIEW & COMMENT	MS	MS	MS
004	11/03/21	FOR REVIEW & COMMENT	MS	MS	MS
005	11/03/21	FOR REVIEW & COMMENT	MS	MS	MS
006	11/03/21	FOR REVIEW & COMMENT	MS	MS	MS
007	11/03/21	FOR REVIEW & COMMENT	MS	MS	MS
008	11/03/21	FOR REVIEW & COMMENT	MS	MS	MS
009	11/03/21	FOR REVIEW & COMMENT	MS	MS	MS
010	11/03/21	FOR REVIEW & COMMENT	MS	MS	MS
011	11/03/21	FOR REVIEW & COMMENT	MS	MS	MS
012	11/03/21	FOR REVIEW & COMMENT	MS	MS	MS
013	11/03/21	FOR REVIEW & COMMENT	MS	MS	MS
014	11/03/21	FOR REVIEW & COMMENT	MS	MS	MS
015	11/03/21	FOR REVIEW & COMMENT	MS	MS	MS
016	11/03/21	FOR REVIEW & COMMENT	MS	MS	MS
017	11/03/21	FOR REVIEW & COMMENT	MS	MS	MS
018	11/03/21	FOR REVIEW & COMMENT	MS	MS	MS
019	11/03/21	FOR REVIEW & COMMENT	MS	MS	MS
020	11/03/21	FOR REVIEW & COMMENT	MS	MS	MS
021	11/03/21	FOR REVIEW & COMMENT	MS	MS	MS
022	11/03/21	FOR REVIEW & COMMENT	MS	MS	MS
023	11/03/21	FOR REVIEW & COMMENT	MS	MS	MS
024	11/03/21	FOR REVIEW & COMMENT	MS	MS	MS
025	11/03/21	FOR REVIEW & COMMENT	MS	MS	MS
026	11/03/21	FOR REVIEW & COMMENT	MS	MS	MS
027	11/03/21	FOR REVIEW & COMMENT	MS	MS	MS
028	11/03/21	FOR REVIEW & COMMENT	MS	MS	MS
029	11/03/21	FOR REVIEW & COMMENT	MS	MS	MS
030	11/03/21	FOR REVIEW & COMMENT	MS	MS	MS
031	11/03/21	FOR REVIEW & COMMENT	MS	MS	MS
032	11/03/21	FOR REVIEW & COMMENT	MS	MS	MS
033	11/03/21	FOR REVIEW & COMMENT	MS	MS	MS
034	11/03/21	FOR REVIEW & COMMENT	MS	MS	MS
035	11/03/21	FOR REVIEW & COMMENT	MS	MS	MS
036	11/03/21	FOR REVIEW & COMMENT	MS	MS	MS
037	11/03/21	FOR REVIEW & COMMENT	MS	MS	MS
038	11/03/21	FOR REVIEW & COMMENT	MS	MS	MS
039	11/03/21	FOR REVIEW & COMMENT	MS	MS	MS
040	11/03/21	FOR REVIEW & COMMENT	MS	MS	MS
041	11/03/21	FOR REVIEW & COMMENT	MS	MS	MS
042	11/03/21	FOR REVIEW & COMMENT	MS	MS	MS
043	11/03/21	FOR REVIEW & COMMENT	MS	MS	MS
044	11/03/21	FOR REVIEW & COMMENT	MS	MS	MS
045	11/03/21	FOR REVIEW & COMMENT	MS	MS	MS
046	11/03/21	FOR REVIEW & COMMENT	MS	MS	MS
047	11/03/21	FOR REVIEW & COMMENT	MS	MS	MS
048	11/03/21	FOR REVIEW & COMMENT	MS	MS	MS
049	11/03/21	FOR REVIEW & COMMENT	MS	MS	MS
050	11/03/21	FOR REVIEW & COMMENT	MS	MS	MS
051	11/03/21	FOR REVIEW & COMMENT	MS	MS	MS
052	11/03/21	FOR REVIEW & COMMENT	MS	MS	MS
053	11/03/21	FOR REVIEW & COMMENT	MS	MS	MS
054	11/03/21	FOR REVIEW & COMMENT	MS	MS	MS
055	11/03/21	FOR REVIEW & COMMENT	MS	MS	MS
056	11/03/21	FOR REVIEW & COMMENT	MS	MS	MS
057	11/03/21	FOR REVIEW & COMMENT	MS	MS	MS
058	11/03/21	FOR REVIEW & COMMENT	MS	MS	MS
059	11/03/21	FOR REVIEW & COMMENT	MS	MS	MS
060	11/03/21	FOR REVIEW & COMMENT	MS	MS	MS
061	11/03/21	FOR REVIEW & COMMENT	MS	MS	MS
062	11/03/21	FOR REVIEW & COMMENT	MS	MS	MS
063	11/03/21	FOR REVIEW & COMMENT	MS	MS	MS
064	11/03/21	FOR REVIEW & COMMENT	MS	MS	MS
065	11/03/21	FOR REVIEW & COMMENT	MS	MS	MS
066	11/03/21	FOR REVIEW & COMMENT	MS	MS	MS
067	11/03/21	FOR REVIEW & COMMENT	MS	MS	MS
068	11/03/21	FOR REVIEW & COMMENT	MS	MS	MS
069	11/03/21	FOR REVIEW & COMMENT	MS	MS	MS
070	11/03/21	FOR REVIEW & COMMENT	MS	MS	MS
071	11/03/21	FOR REVIEW & COMMENT	MS	MS	MS
072	11/03/21	FOR REVIEW & COMMENT	MS	MS	MS
073	11/03/21	FOR REVIEW & COMMENT	MS	MS	MS
074	11/03/21	FOR REVIEW & COMMENT	MS	MS	MS
075	11/03/21	FOR REVIEW & COMMENT	MS	MS	MS
076	11/03/21	FOR REVIEW & COMMENT	MS	MS	MS
077	11/03/21	FOR REVIEW & COMMENT	MS	MS	MS
078	11/03/21	FOR REVIEW & COMMENT	MS	MS	MS
079	11/03/21	FOR REVIEW & COMMENT	MS	MS	MS
080	11/03/21	FOR REVIEW & COMMENT	MS	MS	MS
081	11/03/21	FOR REVIEW & COMMENT	MS	MS	MS
082	11/03/21	FOR REVIEW & COMMENT	MS	MS	MS
083	11/03/21	FOR REVIEW & COMMENT	MS	MS	MS
084	11/03/21	FOR REVIEW & COMMENT	MS	MS	MS
085	11/03/21	FOR REVIEW & COMMENT	MS	MS	MS
086	11/03/21	FOR REVIEW & COMMENT	MS	MS	MS
087	11/03/21	FOR REVIEW & COMMENT	MS	MS	MS
088	11/03/21	FOR REVIEW & COMMENT	MS	MS	MS
089	11/03/21	FOR REVIEW & COMMENT	MS	MS	MS
090	11/03/21	FOR REVIEW & COMMENT	MS	MS	MS
091	11/03/21	FOR REVIEW & COMMENT	MS	MS	MS
092	11/03/21	FOR REVIEW & COMMENT	MS	MS	MS
093	11/03/21	FOR REVIEW & COMMENT	MS	MS	MS
094	11/03/21	FOR REVIEW & COMMENT	MS	MS	MS
095	11/03/21	FOR REVIEW & COMMENT	MS	MS	MS
096	11/03/21	FOR REVIEW & COMMENT	MS	MS	MS
097	11/03/21	FOR REVIEW & COMMENT	MS	MS	MS
098	11/03/21	FOR REVIEW & COMMENT	MS	MS	MS
099	11/03/21	FOR REVIEW & COMMENT	MS	MS	MS
100	11/03/21	FOR REVIEW & COMMENT	MS	MS	MS

**Project Title**  
FOR REVIEW & COMMENT

**Project No**  
A47/A11 THICKTHORN JUNCTION PCF STAGE 3

**Drawing Title**  
CANTLEY LANE OPTION 4 GENERAL ARRANGEMENT

**Scale**  
1:500

**Original Date**  
11/03/21

**Issue Date**  
11/03/21

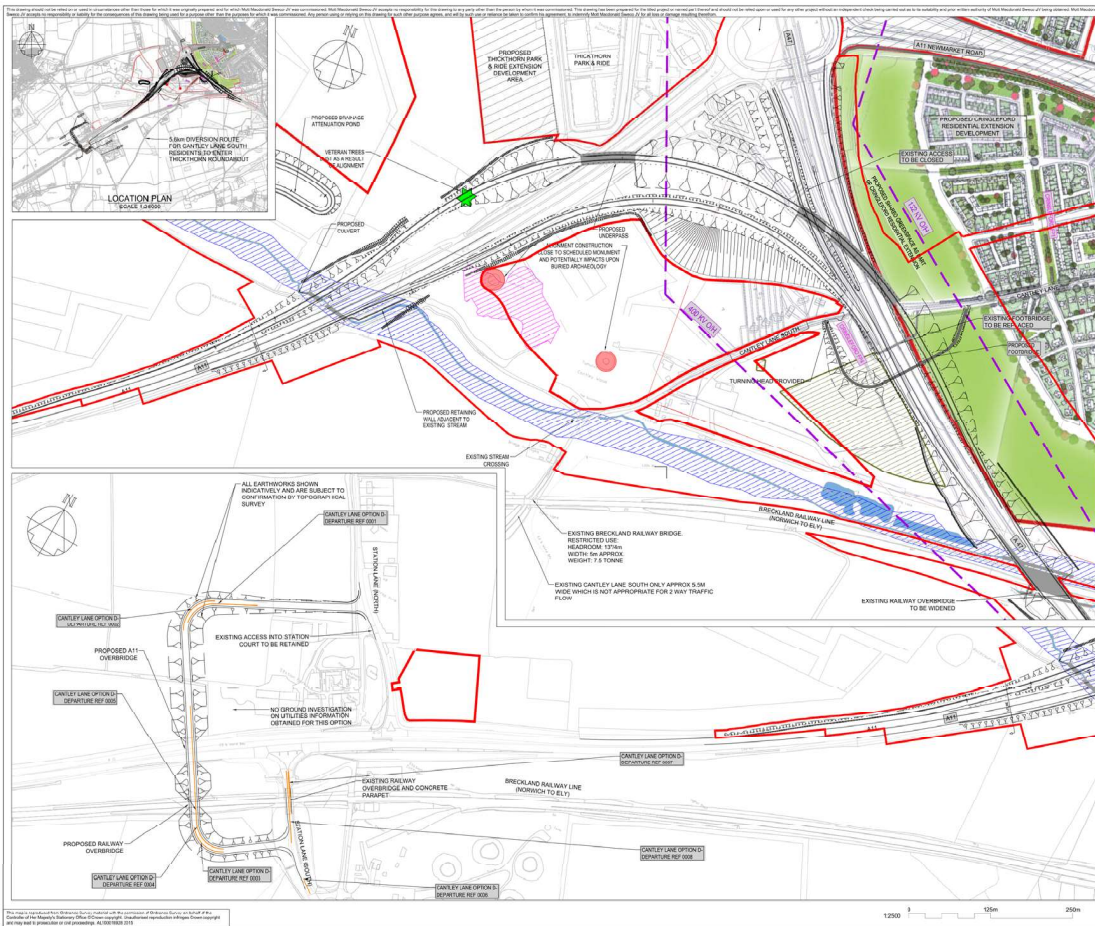
**Design Number**  
HE014932 - MMS JV

**Project No**  
000 - DR - CH - 00002

**Revision No**  
P07

**Revision Date**  
11/03/21





**Notes**

1. ALL DIMENSIONS ARE BASED UPON ORDNANCE DATUM AND ARE SUBJECT TO CORRECTION BY TOPographical SURVEY OR OTHER AS APPROPRIATE. DIMENSIONS IN METERS UNLESS OTHERWISE STATED.
2. THE OPTION ARRANGEMENTS SHOWN ARE SUBJECT TO THE RESULTS OF A FURTHER INVESTIGATION AND DESIGN WORK.
3. THE OPTION ARRANGEMENTS SHOWN ARE SUBJECT TO THE RESULTS OF A FURTHER INVESTIGATION AND DESIGN WORK.
4. THE OPTION ARRANGEMENTS SHOWN ARE SUBJECT TO THE RESULTS OF A FURTHER INVESTIGATION AND DESIGN WORK.
5. THE OPTION ARRANGEMENTS SHOWN ARE SUBJECT TO THE RESULTS OF A FURTHER INVESTIGATION AND DESIGN WORK.
6. THE OPTION ARRANGEMENTS SHOWN ARE SUBJECT TO THE RESULTS OF A FURTHER INVESTIGATION AND DESIGN WORK.
7. THE OPTION ARRANGEMENTS SHOWN ARE SUBJECT TO THE RESULTS OF A FURTHER INVESTIGATION AND DESIGN WORK.
8. THE OPTION ARRANGEMENTS SHOWN ARE SUBJECT TO THE RESULTS OF A FURTHER INVESTIGATION AND DESIGN WORK.
9. THE OPTION ARRANGEMENTS SHOWN ARE SUBJECT TO THE RESULTS OF A FURTHER INVESTIGATION AND DESIGN WORK.
10. THE OPTION ARRANGEMENTS SHOWN ARE SUBJECT TO THE RESULTS OF A FURTHER INVESTIGATION AND DESIGN WORK.

**Key to symbols**

- ENVIRONMENTAL AGENCY FLOOD ZONE 3
- SCHEDULED MONUMENT
- CONTAMINATED LAND
- OVERHEAD CABLES
- EXISTING INFRASTRUCTURE
- VETERAN TREES
- WATER BODY
- AREA OF HISTORICAL GRAVEL PIT
- HIGHWAY IMPROVEMENTS TO BE UNDERTAKEN AS PART OF THE OVERBRIDGE AND RAILWAY DEVELOPMENT
- ROADWAY IMPROVEMENTS AS SUBMITTED WITHIN ENVIRONMENTAL SCOPING REPORT
- EXTENT OF DEVELOPMENT

Rev	Date	Amendment Details	Drawn	CN	App'd
REV	21/11/17	FIRST ISSUE	SB	MM	MM
REV	15/01/18	FOR REVIEW & COMMENT	CM	MM	MM
REV	15/01/18	FOR REVIEW & COMMENT	MM	MM	MM
REV	15/01/18	FOR REVIEW & COMMENT	MM	MM	MM
REV	20/04/18	FOR REVIEW & COMMENT	SL	SL	SL

**Mott MacDonald Sweco**

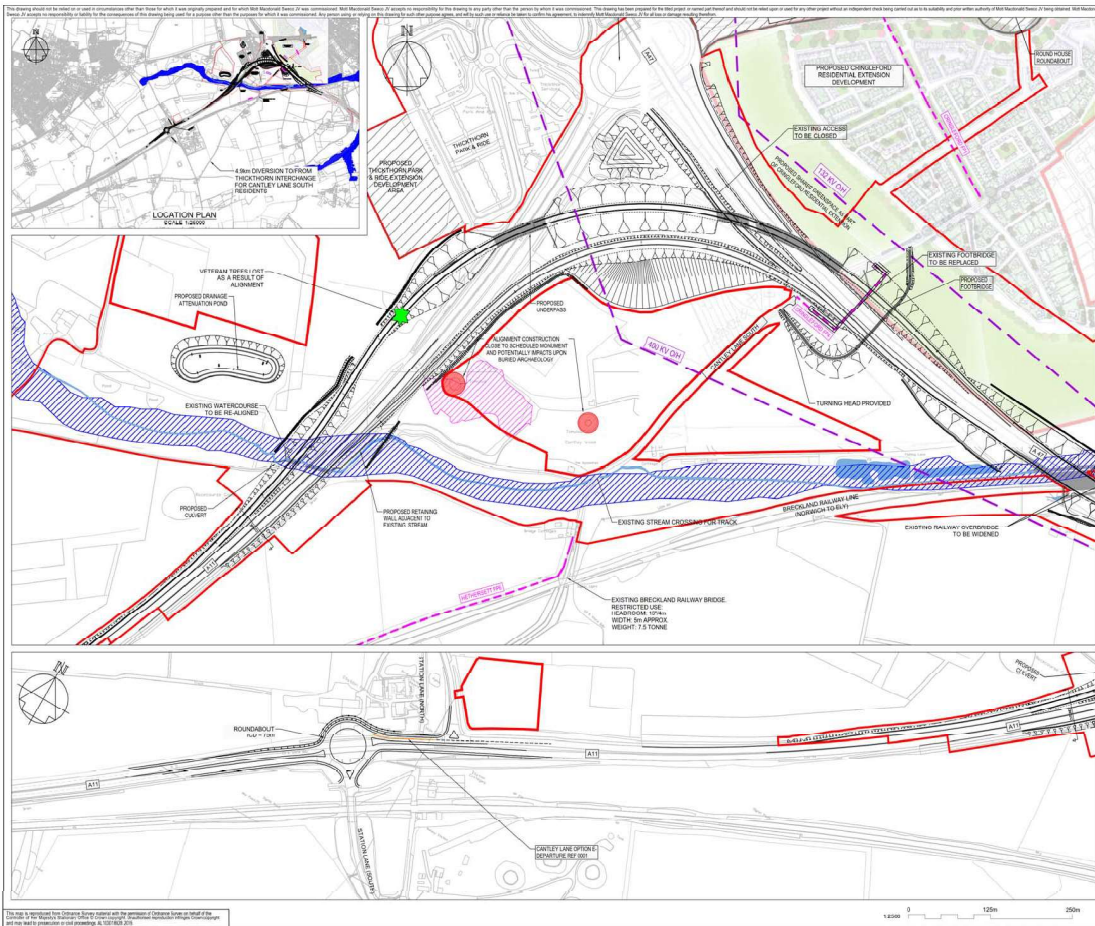
**FOR REVIEW & COMMENT** S3

**A47 THICKTHORN JUNCTION WITH A11**

**CANTLEY LANE OPTION 5 GENERAL ARRANGEMENT**

Date	Prepared	Checked	Checked	Approved
12/05/17	MM/JV	MM/JV	MM/JV	MM/JV
000	DR	CH	00007	PCS

HE551482 - MMS/JV - HGN - HE551482



**Notes**

- ALL UNDERGROUND ARE BASED UPON CHORDANCE SURVEY AND ARE SUBJECT TO CORROBORATION BY TOPOGRAPHICAL SURVEY OR SIMILAR.
- ALL UNDERGROUND ARE NOT SHOWN UNLESS UNDERGROUND IS AFFECTED BY THIS OPTION. ARRANGEMENTS REVEALS ITS IN.
- INSUFFICIENT DISTANCE BETWEEN JUNCTIONS AT STATION LANE WHICH WILL RESULT IN INCREASED SAFETY RISKS AND CONFLICTS BETWEEN STATION LANE VEHICLES MOVING WITH THE A11 AND A11.
- THE INTRODUCTION OF A ROUNDABOUT ON A FREE FLOWING SECTION OF THE A11 IS LIKELY TO CAUSE DELAYS AND INCREASE THE NUMBER OF ACCIDENTS WHICH COULD INTRODUCE CUMULATIVE ECONOMIC CONSEQUENCES.
- PROPERTIES ON CANTLEY LANE SOUTH WILL HAVE TO MAKE A LARGE SECTION OF AN ADDITIONAL 40m COMPARED TO THE EXISTING 20m ON THE ROADWAY TO THE THICKTHORN JUNCTION.
- THE LONG DETOUR TO THE MAIN GROUP OF PROPERTIES ON CANTLEY LANE SOUTH WHICH INCLUDES APPROXIMATELY 1.2km OF RURAL TWO-WAY SINGLE LANE CARRIAGEWAY ROADS WITH LIMITED PASSING PLACES WOULD INCREASELY AFFECT EMERGENCY SERVICES RESPONSE TIMES.
- ACCESS TO THE PROPERTIES ON CANTLEY LANE SOUTH WILL BE RESTRICTED BY THE 12.5m HIGH BRIDGE WITH A 12m HEADROOM AND WILL RESTRICT ACCESS NOT ONLY FOR RESIDENTS BUT ALSO FOR DELIVERIES, FARMERS AND THEIR EQUIPMENT, MOVEMENT OF PRODUCTS AND ANIMALS ETC.
- FOR DELIVERIES, FARMERS AND THEIR EQUIPMENT, MOVEMENT OF PRODUCTS AND ANIMALS ETC.

HE501456Z - MMSLV - HGN - C0003 - P02

**ENVIRONMENTAL AGENCY FLOOD ZONE 3**

- SCHEDULED MONUMENT
- CONTAMINATED LAND
- OVERHEAD CABLES
- ADJACENT HIGHWAYS
- WATER BODY
- AREA OF HISTORICAL GRAVEL PIT
- HIGHWAY IMPROVEMENTS TO BE UNDERTAKEN AS PART OF THE DEVELOPMENT
- DEVELOPMENT AS SUBMITTED WITH ENVIRONMENTAL AGENCY REPORT
- EXTENT OF DEVELOPMENT

REV	DATE	AMENDMENT DETAILS	DRAWN	CHK'D	APP'D
001	12/08/17	ISSUE FOR COMMENT			
002	14/09/17	FOR REVIEW & COMMENT			

**Mott MacDonald Sweco**

**highways england**

FOR REVIEW & COMMENT

A47 THICKTHORN JUNCTION WITH A11

CANTLEY LANE OPTION 6 GENERAL ARRANGEMENT

HE501456Z

003 - DR - CH - C0003 - P02



