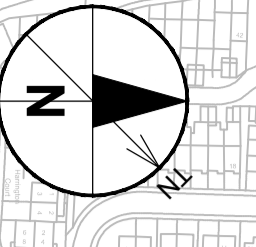
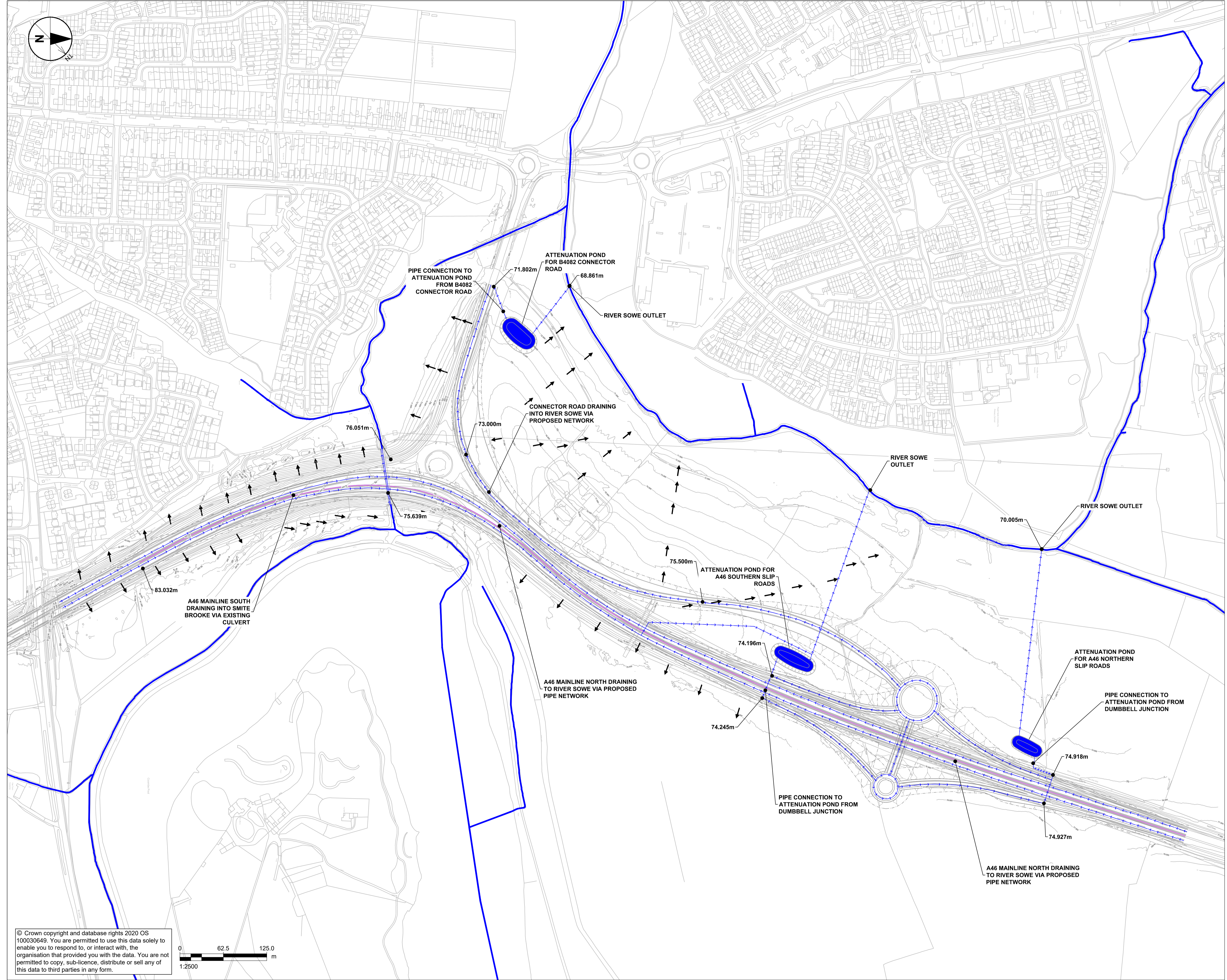


APPENDIX N
PROPOSED DRAINAGE DRAWINGS

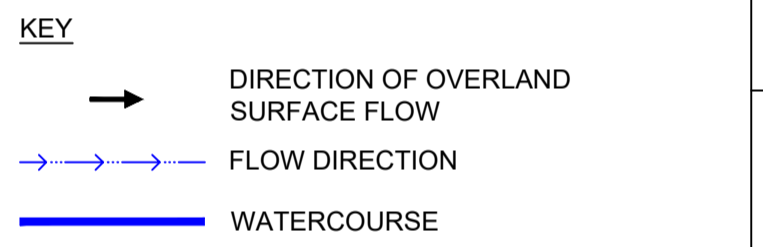


SAFETY, HEALTH AND ENVIRONMENTAL INFORMATION BOX
 IT IS ASSUMED THAT ALL WORKS ON THIS DRAWING WILL BE CARRIED OUT BY A COMPETENT CONTRACTOR WORKING WHERE APPROPRIATE, TO AN APPROPRIATE METHOD STATEMENT.
 THIS DRAWING IS TO BE USED ONLY FOR THE PURPOSE OF ISSUE THAT IT WAS ISSUED FOR AND IS SUBJECT TO AMENDMENT.
 EXCEPTIONAL RISKS RELATING TO THE WORKS ASSOCIATED WITH THIS DRAWING ARE IDENTIFIED BELOW.

CONSTRUCTION

MAINTENANCE / OPERATION / DECOMMISSIONING / DEMOLITION

- NOTES**
1. THIS DRAWING IS TO BE READ IN CONJUNCTION WITH ALL OTHER RELEVANT DOCUMENTATION.
 2. DO NOT SCALE FROM THIS DRAWING, USE ONLY PRINTED DIMENSIONS.
 3. ALL DIMENSIONS, CHAINAGES, LEVELS AND COORDINATES ARE IN METRES UNLESS DEFINED OTHERWISE.
 4. THIS DRAWING IS TO BE READ IN CONJUNCTION WITH THE PROJECT HEALTH & SAFETY FILE FOR ANY IDENTIFIED POTENTIAL RISKS.
 5. PIPE NETWORK DESIGN HAS NOT BEEN UNDERTAKEN AT THIS STAGE. CATCHMENT ANALYSIS HAS BEEN CARRIED OUT FOR ATTENUATION POND SIZING ONLY. EXISTING / PROPOSED PIPE NETWORK SHOWN IS INDICATIVE.
 6. NO INVERT OR COVER LEVEL INFORMATION FOR THE EXISTING PIPE NETWORK HAS BEEN RECEIVED IN PCF STAGE 2. LOCATIONS WHERE THE NEW PIPE NETWORK WILL CROSS OR BE SITUATED IN CLOSE PROXIMITY WILL REQUIRE TO BE INVESTIGATED IN PCF STAGE 3.



FIRST ISSUE	TO	06/09/21	P01
DRAWING NOTES UPDATED	DI	17/11/21	P02
REVISION DETAILS	By	Check	Date
By	Check	Date	Suffix

SUITABLE FOR INFORMATION

Client
 Highways England
 The Cube
 199 Wharfedale Street
 Birmingham
 B1 1RN

Project Title
**A46 COVENTRY JUNCTIONS
 WALSGRAVE
 PCF STAGE 2**

Drawing Title
**WALSGRAVE PCF STAGE 2
 OPTION 11
 PROPOSED DRAINAGE**

Designed TO	Drawn DI	Checked JN	Approved CG	Date
17/11/21				17/11/21
Internal Project No. 60638418	Suitability S2	Discipline Civil - Drainage		

THIS DOCUMENT HAS BEEN PREPARED PURSUANT TO AND SUBJECT TO THE TERMS OF AECOM'S APPOINTMENT BY ITS CLIENT. AECOM ACCEPTS NO LIABILITY FOR ANY USE OF THIS DOCUMENT OTHER THAN BY ITS ORIGINAL CLIENT OR FOLLOWING AECOM'S EXPRESS AGREEMENT TO SUCH USE, AND ONLY FOR THE PURPOSES FOR WHICH IT WAS PREPARED AND PROVIDED.

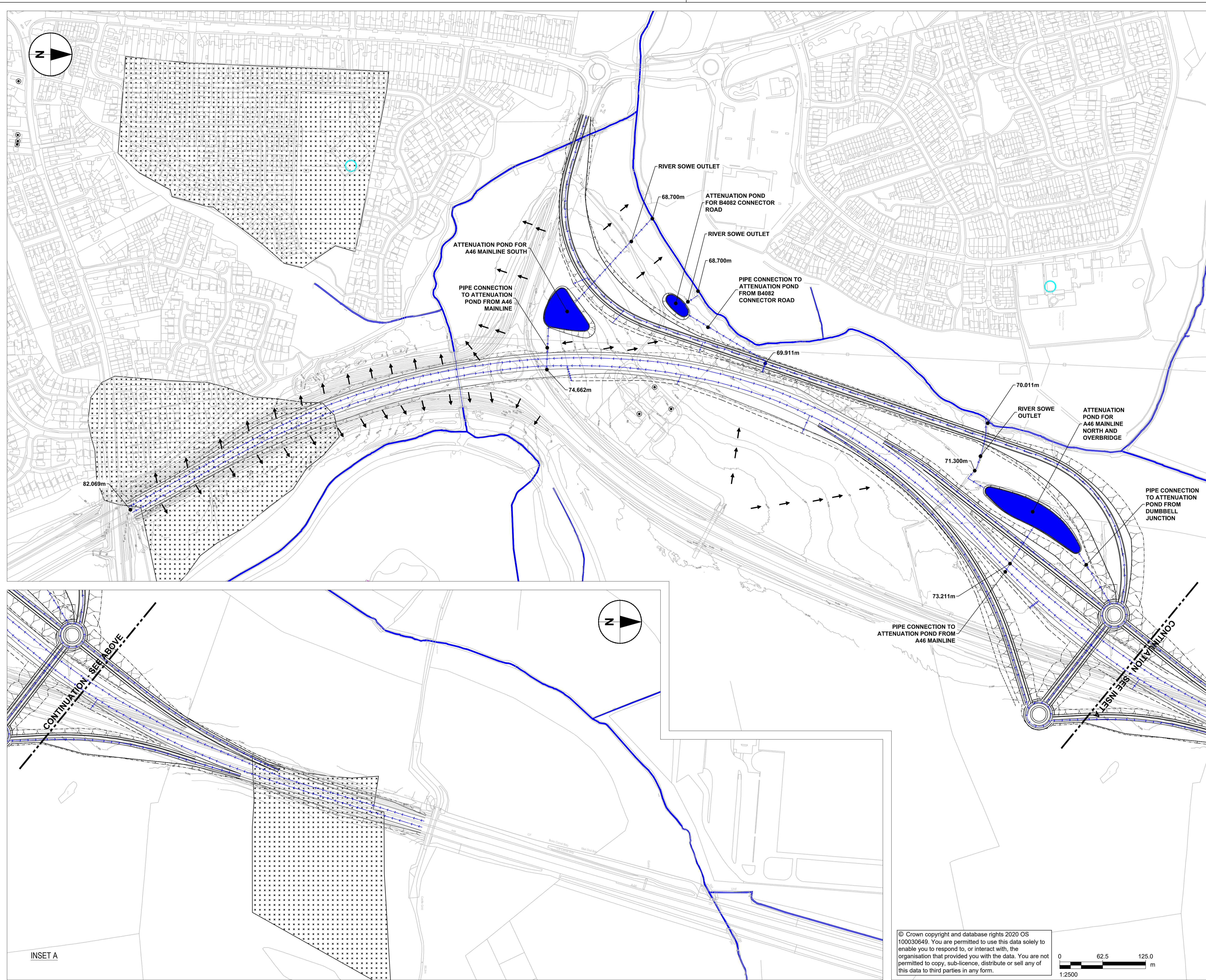
AECOM
 Sunley House
 4 Bedford Park
 Croydon
 CR0 2AP
 Tel: +44 (0)208 639 3500
 www.aecom.com

AECOM Infrastructure & Environment UK Limited
 Registered in England Registered number: 880328
 Registered office: Midpoint, Alencorn Link,
 Basingstoke, Hampshire RG21 7PP

Drawing Number HE604820	Work Package ID -ACM	1 Originator	1 Volume	Rev
HE604820	-ACM	-HDG-		P02
WAL_SW_OP11_Z-DR-CD-0001				
Location	1 Type	1 Role	1 Number	

File Path: C:\Users\David.Lillicrap\Documents\A46 Coventry Junctions Walsgrave PCF Stage 2 Option 11 Proposed Drainage\DWG\WAL_SW_OP11_Z-DR-CD-0001.dwg
 Date: 17 November 2021 16:00:00
 User: David.Lillicrap

© Crown copyright and database rights 2020 OS 100030649. You are permitted to use this data solely to enable you to respond to, or interact with, the organisation that provided you with the data. You are not permitted to copy, sub-licence, distribute or sell any of this data to third parties in any form.



SAFETY, HEALTH AND ENVIRONMENTAL INFORMATION BOX

IT IS ASSUMED THAT ALL WORKS ON THIS DRAWING WILL BE CARRIED OUT BY A COMPETENT CONTRACTOR WORKING, WHERE APPROPRIATE, TO AN APPROPRIATE METHOD STATEMENT.
THIS DRAWING IS TO BE USED ONLY FOR THE PURPOSE OF ISSUE THAT IT WAS ISSUED FOR AND IS SUBJECT TO AMENDMENT.
EXCEPTIONAL RISKS RELATING TO THE WORKS ASSOCIATED WITH THIS DRAWING ARE IDENTIFIED BELOW.

CONSTRUCTION

MAINTENANCE / OPERATION / DECOMMISSIONING / DEMOLITION

NOTES

1. THIS DRAWING IS TO BE READ IN CONJUNCTION WITH ALL OTHER RELEVANT DOCUMENTATION.
2. DO NOT SCALE FROM THIS DRAWING. USE ONLY PRINTED DIMENSIONS.
3. ALL DIMENSIONS, CHAINAGES, LEVELS AND COORDINATES ARE IN METRES UNLESS DEFINED OTHERWISE.
4. THIS DRAWING IS TO BE READ IN CONJUNCTION WITH THE PROJECT HEALTH & SAFETY FILE FOR ANY IDENTIFIED POTENTIAL RISKS.
5. PIPE NETWORK DESIGN HAS NOT BEEN UNDERTAKEN AT THIS STAGE. CATCHMENT ANALYSIS HAS BEEN CARRIED OUT FOR ATTENUATION POND SIZING ONLY. EXISTING / PROPOSED PIPE NETWORK SHOWN IS INDICATIVE.
6. NO INVERT OR COVER LEVEL INFORMATION FOR THE EXISTING PIPE NETWORK HAS BEEN RECEIVED IN PCF STAGE 2. LOCATIONS WHERE THE NEW PIPE NETWORK WILL CROSS OR BE SITUATED IN CLOSE PROXIMITY WILL REQUIRE TO BE INVESTIGATED IN PCF STAGE 3.

KEY

- PROPOSED EARTHWORKS CUT OFF DITCHES
- DIRECTION OF OVERLAND SURFACE FLOW
- FLOW DIRECTION
- WATERCOURSE

FIRST ISSUE	DI	17/11/21	P01
REVISION DETAILS	By	Check	Date
By	Check	Date	Suffix

SUITABLE FOR INFORMATION

Client
Highways England
The Cube
199 Wharfside Street
Birmingham



Project Title
A46 COVENTRY JUNCTIONS WALSGRAVE PCF STAGE 2

Drawing Title
WALSGRAVE PCF STAGE 2 OPTION 6 PROPOSED DRAINAGE

Designed TO	Drawn DI	Checked JN	Approved CG	Date 17/11/21
Internal Project No. 60638418	Suitability S2	Discipline Civil - Drainage		

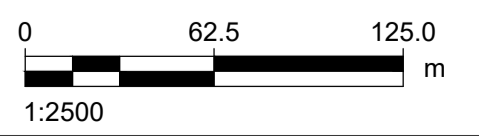
THIS DOCUMENT HAS BEEN PREPARED PURSUANT TO AND SUBJECT TO THE TERMS OF AECOM'S APPOINTMENT BY ITS CLIENT. AECOM ACCEPTS NO LIABILITY FOR ANY USE OF THIS DOCUMENT OTHER THAN BY ITS ORIGINAL CLIENT OR FOLLOWING AECOM'S EXPRESS AGREEMENT TO SUCH USE, AND ONLY FOR THE PURPOSES FOR WHICH IT WAS PREPARED AND PROVIDED.

AECOM
Sunley House
4 Bedford Park
Croydon
CR0 2AP
Tel: +44 (0)208 639 3500
www.aecom.com

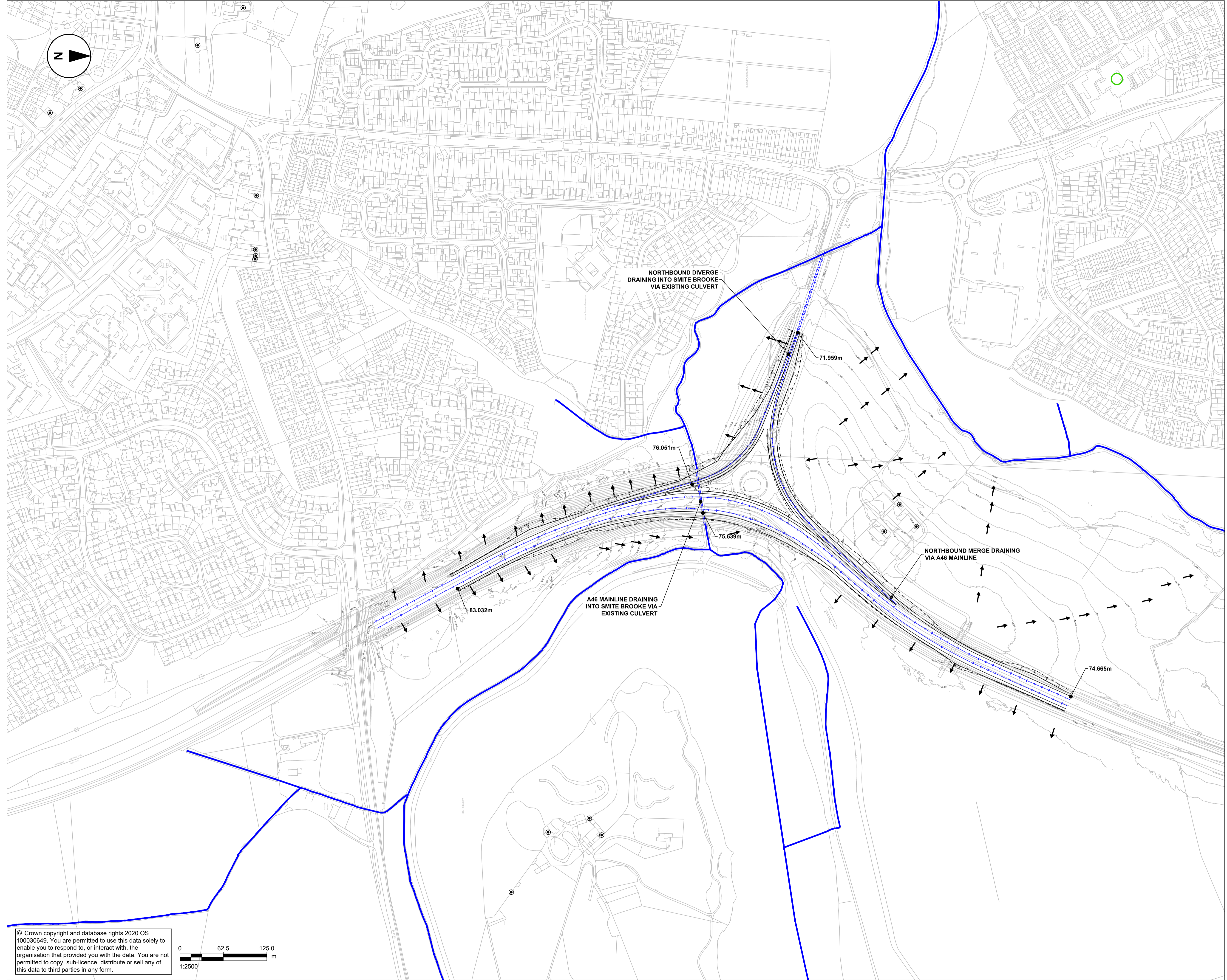


Drawing Number	1 Originator	1 Volume	Rev
HE604820 -ACM	-HDG-		P01
Location	1 Type	1 Role	1 Number
WAL_SW_OP6_Z -DR-CD-0001			

© Crown copyright and database rights 2020 OS 100030649. You are permitted to use this data solely to enable you to respond to, or interact with, the organisation that provided you with the data. You are not permitted to copy, sub-licence, distribute or sell any of this data to third parties in any form.



File Path: I:\November 2021\163529
 User Name: C:\WINDOWS\SYSTEM32\cmd.exe
 User: CL.DAVID.LLUGBO@AECOM.COM\0152075HE604820-ACM-HDG-WAL_SW_OP6_Z-DR-CD-0001



SAFETY, HEALTH AND ENVIRONMENTAL INFORMATION BOX

IT IS ASSUMED THAT ALL WORKS ON THIS DRAWING WILL BE CARRIED OUT BY A COMPETENT CONTRACTOR WORKING WHERE APPROPRIATE, TO AN APPROPRIATE METHOD STATEMENT.
THIS DRAWING IS TO BE USED ONLY FOR THE PURPOSE OF ISSUE THAT IT WAS ISSUED FOR AND IS SUBJECT TO AMENDMENT.
EXCEPTIONAL RISKS RELATING TO THE WORKS ASSOCIATED WITH THIS DRAWING ARE IDENTIFIED BELOW.

CONSTRUCTION

MAINTENANCE / OPERATION / DECOMMISSIONING / DEMOLITION

NOTES

1. THIS DRAWING IS TO BE READ IN CONJUNCTION WITH ALL OTHER RELEVANT DOCUMENTATION.
2. DO NOT SCALE FROM THIS DRAWING, USE ONLY PRINTED DIMENSIONS.
3. ALL DIMENSIONS, CHAINAGES, LEVELS AND COORDINATES ARE IN METRES UNLESS DEFINED OTHERWISE.
4. THIS DRAWING IS TO BE READ IN CONJUNCTION WITH THE PROJECT HEALTH & SAFETY FILE FOR ANY IDENTIFIED POTENTIAL RISKS.
5. PIPE NETWORK DESIGN HAS NOT BEEN UNDERTAKEN AT THIS STAGE. CATCHMENT ANALYSIS HAS BEEN CARRIED OUT FOR ATTENUATION POND SIZING ONLY. EXISTING / PROPOSED PIPE NETWORK SHOWN IS INDICATIVE.
6. NO INVERT OR COVER LEVEL INFORMATION FOR THE EXISTING PIPE NETWORK HAS BEEN RECEIVED IN PCF STAGE 2. LOCATIONS WHERE THE NEW PIPE NETWORK WILL CROSS OR BE SITUATED IN CLOSE PROXIMITY WILL REQUIRE TO BE INVESTIGATED IN PCF STAGE 3.

KEY

	DIRECTION OF OVERLAND SURFACE FLOW
	FLOW DIRECTION
	WATERCOURSE

FIRST ISSUE	DI	17/11/21	P01
REVISION DETAILS	By	Date	Suffix
	Check		

Purpose of issue
SUITABLE FOR INFORMATION

Client
Highways England
The Cube
199 Wharfedale Street
Birmingham



Project Title
A46 COVENTRY JUNCTIONS WALSGRAVE PCF STAGE 2

Drawing Title
WALSGRAVE PCF STAGE 2 OPTION 7 PROPOSED DRAINAGE

Designed TO	Drawn DI	Checked JN	Approved CG	Date 17/11/21
Internal Project No. 60638418	Suitability S2	Discipline Civil - Drainage		

THIS DOCUMENT HAS BEEN PREPARED PURSUANT TO AND SUBJECT TO THE TERMS OF AECOM'S APPOINTMENT BY ITS CLIENT. AECOM ACCEPTS NO LIABILITY FOR ANY USE OF THIS DOCUMENT OTHER THAN BY ITS ORIGINAL CLIENT OR FOLLOWING AECOM'S EXPRESS AGREEMENT TO SUCH USE, AND ONLY FOR THE PURPOSES FOR WHICH IT WAS PREPARED AND PROVIDED.

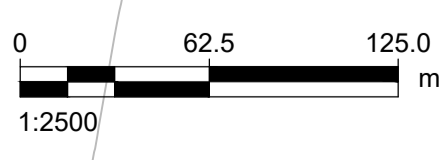
AECOM
Sunley House
4 Bedford Park
Croydon
CR0 2AP
Tel: +44 (0)208 639 3500
www.aecom.com

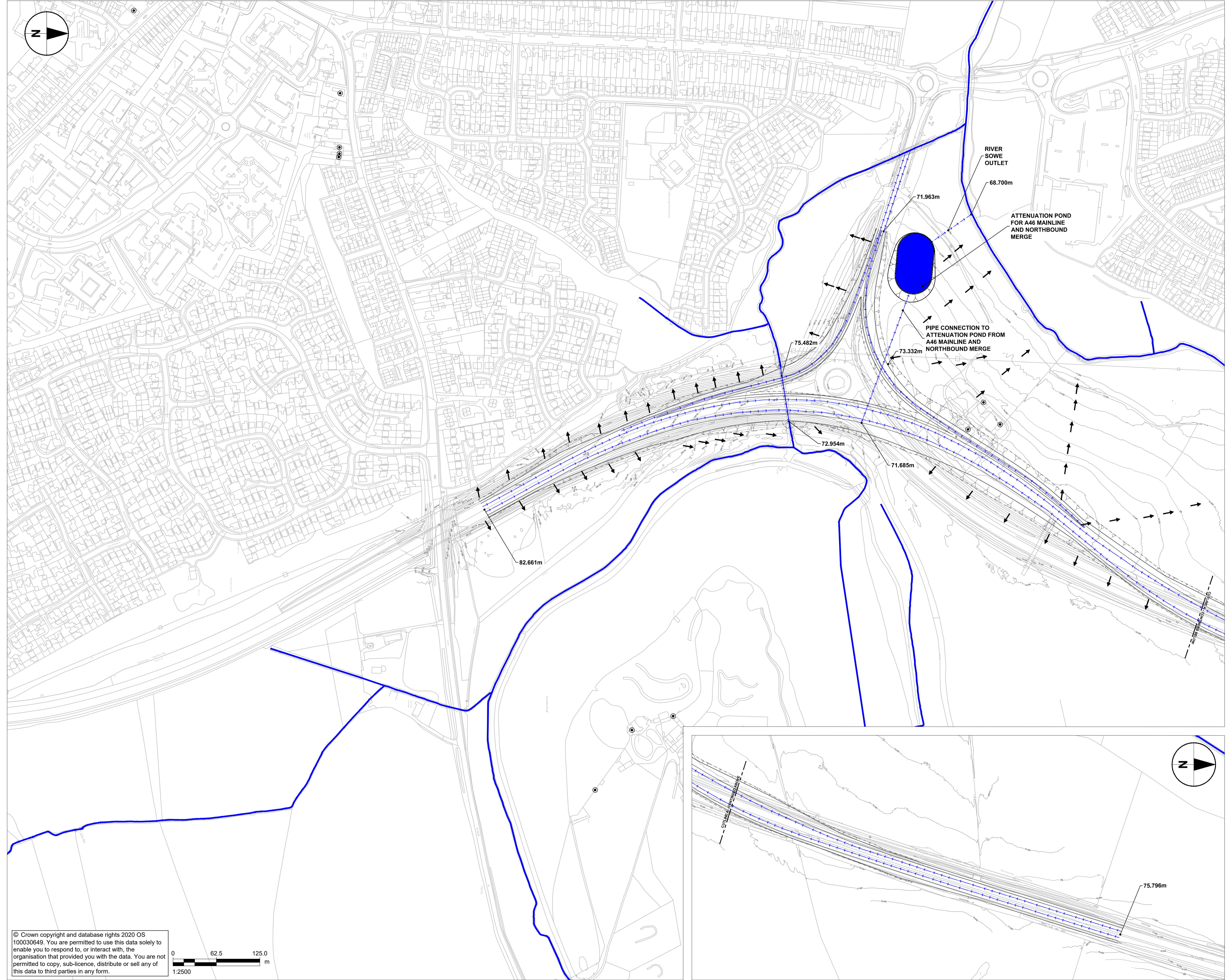
AECOM
AECOM Infrastructure & Environment UK Limited
Registered in England Registered number: 880328
Registered office: Midpoint, Alencor Link,
Basingstoke, Hampshire RG21 7PP

Drawing Number	Work Package ID	I Originator	I Volume	Rev
HE604820 -ACM	-HDG-			P01
Location	WAL_SW_OP7_Z -DR-CD-0002	I Type	I Role	I Number

File Path: C:\Users\DAVID.DAVID\OneDrive\Documents\A46 Coventry Junctions Walsgrave PCF Stage 2 Option 7\Drawings\WAL_SW_OP7_Z-DR-CD-0002.dwg
 User: DAVID.DAVID
 Date: 17/11/2021 10:02:43
 Plot Name: C:\Users\DAVID.DAVID\OneDrive\Documents\A46 Coventry Junctions Walsgrave PCF Stage 2 Option 7\Drawings\WAL_SW_OP7_Z-DR-CD-0002.dwg

© Crown copyright and database rights 2020 OS 100030649. You are permitted to use this data solely to enable you to respond to, or interact with, the organisation that provided you with the data. You are not permitted to copy, sub-licence, distribute or sell any of this data to third parties in any form.





SAFETY, HEALTH AND ENVIRONMENTAL INFORMATION BOX

IT IS ASSUMED THAT ALL WORKS ON THIS DRAWING WILL BE CARRIED OUT BY A COMPETENT CONTRACTOR WORKING WHERE APPROPRIATE, TO AN APPROPRIATE METHOD STATEMENT.

THIS DRAWING IS TO BE USED ONLY FOR THE PURPOSE OF ISSUE THAT IT WAS ISSUED FOR AND IS SUBJECT TO AMENDMENT.

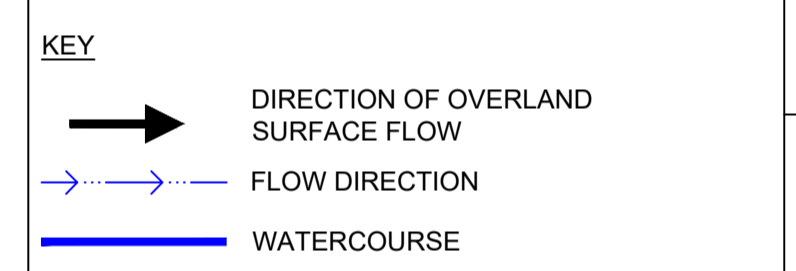
EXCEPTIONAL RISKS RELATING TO THE WORKS ASSOCIATED WITH THIS DRAWING ARE IDENTIFIED BELOW.

CONSTRUCTION

MAINTENANCE / OPERATION / DECOMMISSIONING / DEMOLITION

NOTES

1. THIS DRAWING IS TO BE READ IN CONJUNCTION WITH ALL OTHER RELEVANT DOCUMENTATION.
2. DO NOT SCALE FROM THIS DRAWING. USE ONLY PRINTED DIMENSIONS.
3. ALL DIMENSIONS, CHAINAGES, LEVELS AND COORDINATES ARE IN METRES UNLESS DEFINED OTHERWISE.
4. THIS DRAWING IS TO BE READ IN CONJUNCTION WITH THE PROJECT HEALTH & SAFETY FILE FOR ANY IDENTIFIED POTENTIAL RISKS.
5. PIPE NETWORK DESIGN HAS NOT BEEN UNDERTAKEN AT THIS STAGE. CATCHMENT ANALYSIS HAS BEEN CARRIED OUT FOR ATTENUATION POND SIZING ONLY. EXISTING / PROPOSED PIPE NETWORK SHOWN IS INDICATIVE.
6. NO INVERT OR COVER LEVEL INFORMATION FOR THE EXISTING PIPE NETWORK HAS BEEN RECEIVED IN PCF STAGE 2. LOCATIONS WHERE THE NEW PIPE NETWORK WILL CROSS OR BE SITUATED IN CLOSE PROXIMITY WILL REQUIRE TO BE INVESTIGATED IN PCF STAGE 3.



FIRST ISSUE	DI	17/11/21	P01
	CG		
REVISION DETAILS	By	Date	Suffix
	Check		

Purpose of issue
SUITABLE FOR INFORMATION

Client
Highways England
The Cube
199 Wharfedale Street
Birmingham

Project Title
**A46 COVENTRY JUNCTIONS
WALSGRAVE
PCF STAGE 2**

Drawing Title
**WALSGRAVE PCF STAGE 2
OPTION 8
PROPOSED DRAINAGE**

Designed TO	Drawn DI	Checked JN	Approved CG	Date 17/11/21
Internal Project No. 60638418	Suitability S2	Discipline Civil - Drainage		

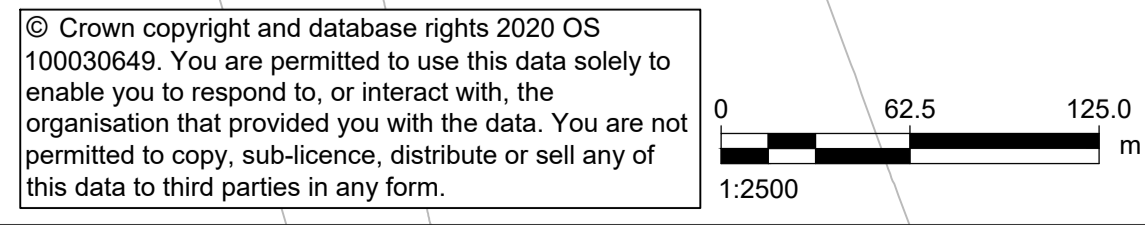
THIS DOCUMENT HAS BEEN PREPARED PURSUANT TO AND SUBJECT TO THE TERMS OF AECOM'S APPOINTMENT BY ITS CLIENT. AECOM ACCEPTS NO LIABILITY FOR ANY USE OF THIS DOCUMENT OTHER THAN BY ITS ORIGINAL CLIENT OR FOLLOWING AECOM'S EXPRESS AGREEMENT TO SUCH USE, AND ONLY FOR THE PURPOSES FOR WHICH IT WAS PREPARED AND PROVIDED.

AECOM
Sunley House
4 Bedford Park
Croydon
CR0 2AP
Tel: +44 (0)208 639 3500
www.aecom.com

AECOM Infrastructure & Environment UK Limited
Registered in England Registered number: 880328
Registered office: Midpoint, Alencon Link,
Basingstoke, Hampshire RG21 7PP

Drawing Number	Work Package ID	I Originator	I Volume	Rev
HE604820	-ACM	-HDG-		P01
Location	I Type	I Role	I Number	
WALS_SW_OP8_Z	-DR	-CD-0002		

File Path: I:\November 2021\16-04-21
 File Name: C:\Users\DAVID.LILLO\Documents\AECOM\COM\01\2075HE604820\ACM\HDG\WALS_SW_OP8_Z\DR-CD-0002



© Crown copyright and database rights 2020 OS 100030649. You are permitted to use this data solely to enable you to respond to, or interact with, the organisation that provided you with the data. You are not permitted to copy, sub-licence, distribute or sell any of this data to third parties in any form.