

A46 Coventry junctions
(Walsgrave)

**Preliminary Environmental
Information Report Figures**

Part two

October 2023

Table of contents

| | | |
|----|-----------------|---|
| 1. | Introduction | 1 |
| 2. | List of figures | 2 |

1. Introduction

This document lists the supporting figures that support the Preliminary Environmental Information prepared for statutory consultation.

The figures form Volume 2 of the Preliminary Environmental Information. Volume 1 is the Preliminary Environmental Information Report, and a Non-Technical Summary of the Preliminary Environmental Information Report forms Volume 3.

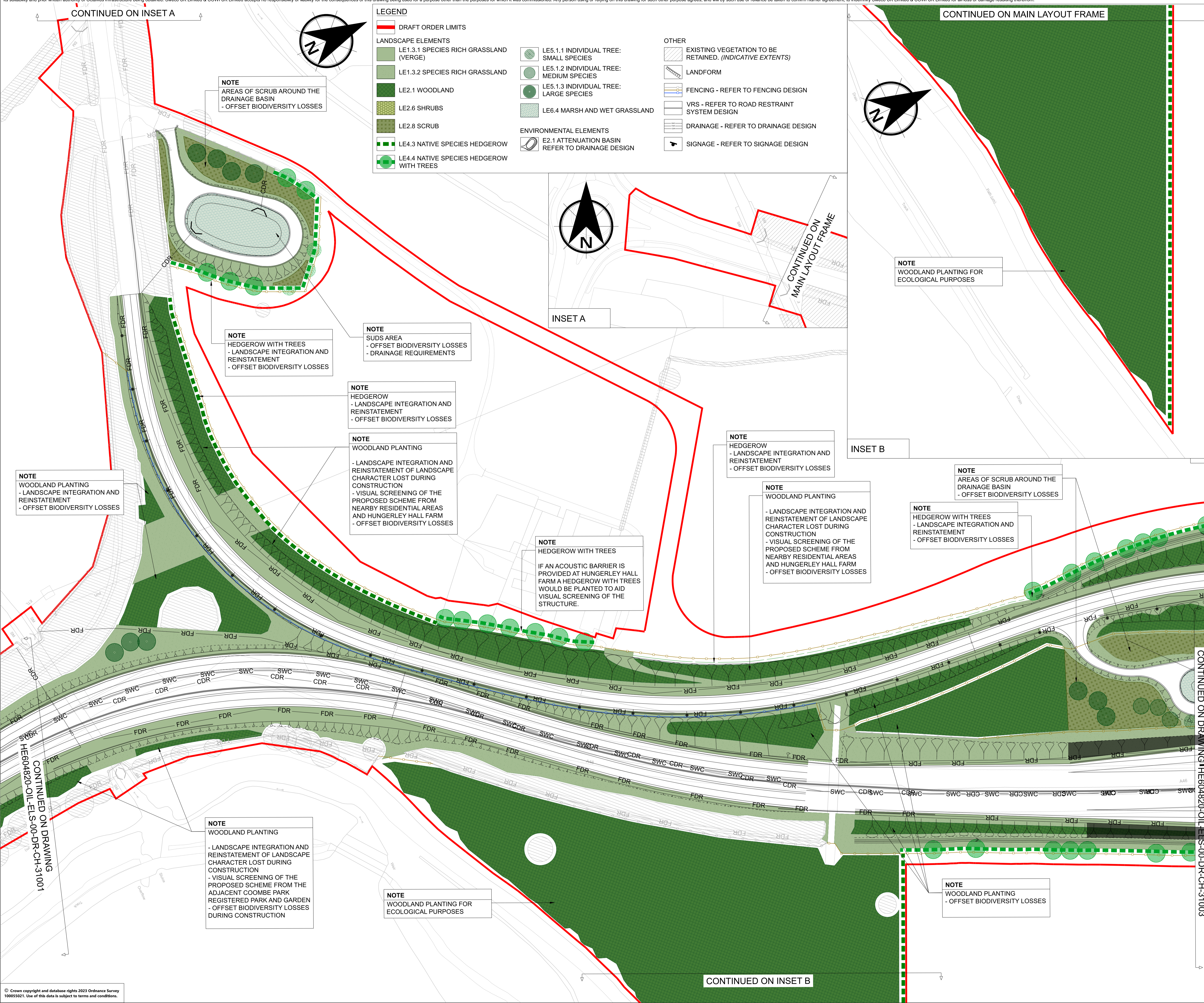
These documents produced to support the statutory public consultation are available at: <https://nationalhighways.co.uk/our-roads/west-midlands/a46-coventry-junctions-upgrade/>.

2. List of figures

The following figures have been produced to support the Preliminary Environmental Information Report (Volume 1) and are available at: <https://nationalhighways.co.uk/our-roads/west-midlands/a46-coventry-junctions-upgrade/>.

| Figure number | Figure name |
|-----------------|--|
| Part one | |
| Figure 2.1 | Location plan |
| Figure 2.2 | Indicative Scheme Extent |
| Figure 2.3 | Environmental Constraints |
| Figure 5.1 | Air Quality Management Areas (AQMAS) |
| Figure 5.2 | Nearby Local Authority Monitoring Sites |
| Figure 5.3 | Preliminary Operational Phase Sensitive Receptors Within 200m Of Realigned Existing Roads, New Roads and New Junctions |
| Figure 5.4 | Construction Phase Sensitive Receptors |
| Figure 6.1 | Designated Heritage Sites |
| Figure 6.2 | Non Designated Heritage Sites |
| Figure 6.3 | Heritage Events |
| Figure 7.1 | Landscape Character |
| Figure 7.2 | Viewpoint locations, ZTV and public paths |
| Figure 7.3 | Indicative Environmental Masterplan For Consultation Overview |
| Figure 7.4 | Indicative Environmental Masterplan For Consultation Sheet 1 of 4 |
| Part two | |
| Figure 7.5 | Indicative Environmental Masterplan For Consultation Sheet 2 of 4 |
| Figure 7.6 | Indicative Environmental Masterplan For Consultation Sheet 3 of 4 |
| Figure 7.7 | Indicative Environmental Masterplan For Consultation Sheet 4 of 4 |
| Figure 8.1 | Ecological Constraints |
| Figure 11.1 | Population and Human Health Constraints |
| Figure 12.1 | Surface water |
| Figure 12.2 | Groundwater |
| Figure 12.3 | Groundwater flooding |

This drawing should not be relied on or used in circumstances other than those for which it was originally prepared and for which Sweco UK Limited & COWI UK Limited was commissioned. Sweco UK Limited & COWI UK Limited accepts no responsibility for this drawing to any party other than the person by whom it was commissioned. This drawing has been prepared on behalf of Octavius Infrastructure by Sweco UK Limited & COWI UK Limited for the titled project or named part thereof and should not be relied upon or used for any other project without an independent check being carried out as to its suitability and prior written authority of Octavius Infrastructure being obtained. Sweco UK Limited & COWI UK Limited accepts no responsibility or liability for the consequences of this drawing being used for a purpose other than the purposes for which it was commissioned. Any person using or relying on this drawing for such other purpose agrees, and will by such use or reliance be taken to confirm his/her agreement, to indemnify Sweco UK Limited & COWI UK Limited for all loss or damage resulting therefrom.



LEGEND

DRAFT ORDER LIMITS

LANDSCAPE ELEMENTS

- LE1.3.1 SPECIES RICH GRASSLAND (VERGE)
- LE1.3.2 SPECIES RICH GRASSLAND
- LE2.1 WOODLAND
- LE2.6 SHRUBS
- LE2.8 SCRUB
- LE4.3 NATIVE SPECIES HEDGEROW
- LE4.4 NATIVE SPECIES HEDGEROW WITH TREES

ENVIRONMENTAL ELEMENTS

- E2.1 ATTENUATION BASIN REFER TO DRAINAGE DESIGN

OTHER

- EXISTING VEGETATION TO BE RETAINED. (INDICATIVE EXTENTS)
- LANDFORM
- FENCING - REFER TO FENCING DESIGN
- VRS - REFER TO ROAD RESTRAINT SYSTEM DESIGN
- DRAINAGE - REFER TO DRAINAGE DESIGN
- SIGNAGE - REFER TO SIGNAGE DESIGN

INDIVIDUAL TREE SPECIES

- LE5.1.1 INDIVIDUAL TREE: SMALL SPECIES
- LE5.1.2 INDIVIDUAL TREE: MEDIUM SPECIES
- LE5.1.3 INDIVIDUAL TREE: LARGE SPECIES

MARSH AND WET GRASSLAND

- LE6.4 MARSH AND WET GRASSLAND

NOTE
AREAS OF SCRUB AROUND THE DRAINAGE BASIN - OFFSET BIODIVERSITY LOSSES

NOTE
HEDGEROW WITH TREES - LANDSCAPE INTEGRATION AND REINSTATEMENT - OFFSET BIODIVERSITY LOSSES

NOTE
SUDS AREA - OFFSET BIODIVERSITY LOSSES - DRAINAGE REQUIREMENTS

NOTE
HEDGEROW - LANDSCAPE INTEGRATION AND REINSTATEMENT - OFFSET BIODIVERSITY LOSSES

NOTE
WOODLAND PLANTING - LANDSCAPE INTEGRATION AND REINSTATEMENT OF LANDSCAPE CHARACTER LOST DURING CONSTRUCTION - VISUAL SCREENING OF THE PROPOSED SCHEME FROM NEARBY RESIDENTIAL AREAS AND HUNGERLEY HALL FARM - OFFSET BIODIVERSITY LOSSES

NOTE
HEDGEROW WITH TREES
IF AN ACOUSTIC BARRIER IS PROVIDED AT HUNGERLEY HALL FARM A HEDGEROW WITH TREES WOULD BE PLANTED TO AID VISUAL SCREENING OF THE STRUCTURE.

NOTE
HEDGEROW - LANDSCAPE INTEGRATION AND REINSTATEMENT - OFFSET BIODIVERSITY LOSSES

NOTE
WOODLAND PLANTING - LANDSCAPE INTEGRATION AND REINSTATEMENT OF LANDSCAPE CHARACTER LOST DURING CONSTRUCTION - VISUAL SCREENING OF THE PROPOSED SCHEME FROM NEARBY RESIDENTIAL AREAS AND HUNGERLEY HALL FARM - OFFSET BIODIVERSITY LOSSES

NOTE
HEDGEROW WITH TREES - LANDSCAPE INTEGRATION AND REINSTATEMENT - OFFSET BIODIVERSITY LOSSES

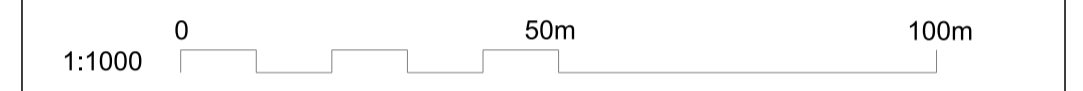
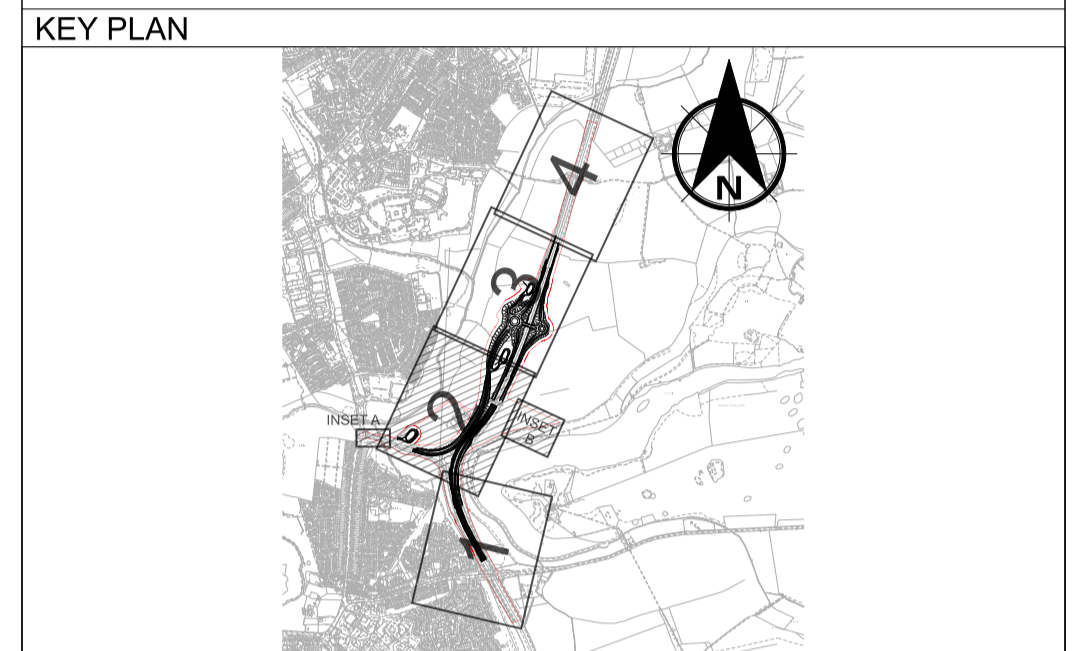
NOTE
AREAS OF SCRUB AROUND THE DRAINAGE BASIN - OFFSET BIODIVERSITY LOSSES

NOTE
WOODLAND PLANTING - LANDSCAPE INTEGRATION AND REINSTATEMENT OF LANDSCAPE CHARACTER LOST DURING CONSTRUCTION - VISUAL SCREENING OF THE PROPOSED SCHEME FROM THE ADJACENT COOMBE PARK REGISTERED PARK AND GARDEN - OFFSET BIODIVERSITY LOSSES DURING CONSTRUCTION

NOTE
WOODLAND PLANTING FOR ECOLOGICAL PURPOSES

NOTE
WOODLAND PLANTING - OFFSET BIODIVERSITY LOSSES

- NOTES**
- THIS DRAWING SHALL BE USED FOR THE PURPOSE SHOWN IN THE TITLE BOX ONLY.
 - THIS DRAWING IS TO BE READ IN CONJUNCTION WITH ALL RELEVANT DRAWINGS.
 - INDICATIVE ENVIRONMENTAL MASTERPLAN FOR CONSULTATION OVERVIEW PLAN HE604820-OIL-ELS-00-DR-LE-31000
 - INDICATIVE ENVIRONMENTAL MASTERPLAN FOR CONSULTATION SHEETS 1 TO 4 HE604820-OIL-ELS-00-DR-LE-31001 TO HE604820-OIL-ELS-00-DR-LE-31004
 - FOR LANDSCAPE ELEMENT AND ENVIRONMENTAL ELEMENT CODES REFER TO DMRB LD117 LANDSCAPE DESIGN DOCUMENT.
 - DO NOT SCALE FROM THIS DRAWING.



| REV | DATE | REVISION NOTE | ORG | CHKD | APPD |
|-----|----------|------------------------------|------|------|------|
| P01 | 10/08/23 | FOR REVIEW AND COMMENT | LScO | SWel | PBlA |
| P02 | 22/09/23 | FOR REVIEW AND AUTHORIZATION | ACor | SWel | NGan |
| P03 | 29/09/23 | FOR REVIEW AND AUTHORIZATION | EDav | SWel | NGan |
| P04 | 11/10/23 | FOR REVIEW AND AUTHORIZATION | LScO | SWel | CF |

DESIGNER
COWI SWECO

CONTRACTOR
octavius

CLIENT
national highways

PROJECT TITLE
A46 COVENTRY JUNCTIONS (WALSGRAVE)

PROJECT STAGE
FOR STATUTORY CONSULTATION

DRAWING TITLE
FIGURE 7.5 INDICATIVE ENVIRONMENTAL MASTERPLAN FOR CONSULTATION SHEET 2 OF 4

SUITABILITY
FOR REVIEW AND AUTHORIZATION

| SHEET SIZE | SCALE | STATUS | REVISION |
|------------|--------|--------|----------|
| A1 | 1:1000 | S4 | P04 |

DRAWING NUMBER
HE604820-OIL-ELS-00-DR-CH-31002

This drawing should not be relied on or used in circumstances other than those for which it was originally prepared and for which Sweco UK Limited & COWI UK Limited was commissioned. Sweco UK Limited & COWI UK Limited accepts no responsibility for this drawing to any party other than the person by whom it was commissioned. This drawing has been prepared on behalf of Octavius Infrastructure by Sweco UK Limited & COWI UK Limited for the titled project or named part thereof and should not be relied upon or used for any other project without an independent check being carried out as to its suitability and prior written authority of Octavius Infrastructure being obtained. Sweco UK Limited & COWI UK Limited accepts no responsibility or liability for the consequences of this drawing being used for a purpose other than the purposes for which it was commissioned. Any person using or relying on this drawing for such other purpose agrees, and will by such use or reliance be taken to confirm his/her agreement, to indemnify Sweco UK Limited & COWI UK Limited for all loss or damage resulting therefrom.

LEGEND

DRAFT ORDER LIMITS

LANDSCAPE ELEMENTS

- LE1.3.1 SPECIES RICH GRASSLAND (VERGE)
- LE1.3.2 SPECIES RICH GRASSLAND
- LE2.1 WOODLAND
- LE2.6 SHRUBS
- LE2.8 SCRUB
- LE4.3 NATIVE SPECIES HEDGEROW
- LE4.4 NATIVE SPECIES HEDGEROW WITH TREES
- LE5.1.1 INDIVIDUAL TREE: SMALL SPECIES
- LE5.1.2 INDIVIDUAL TREE: MEDIUM SPECIES
- LE5.1.3 INDIVIDUAL TREE: LARGE SPECIES
- LE6.4 MARSH AND WET GRASSLAND

ENVIRONMENTAL ELEMENTS

- E2.1 ATTENUATION BASIN REFER TO DRAINAGE DESIGN

OTHER

- EXISTING VEGETATION TO BE RETAINED. (INDICATIVE EXTENTS)
- LANDFORM
- FENCING - REFER TO FENCING DESIGN
- VRS - REFER TO ROAD RESTRAINT SYSTEM DESIGN
- DRAINAGE - REFER TO DRAINAGE DESIGN
- SIGNAGE - REFER TO SIGNAGE DESIGN



NOTE
WOODLAND PLANTING
- OFFSET BIODIVERSITY LOSSES

NOTE
AREAS OF SCRUB AROUND THE DRAINAGE BASIN
- OFFSET BIODIVERSITY LOSSES

NOTE
HEDGEROW WITH TREES
- LANDSCAPE INTEGRATION AND REINSTATEMENT
- OFFSET BIODIVERSITY LOSSES

NOTE
WOODLAND PLANTING
- LANDSCAPE INTEGRATION AND REINSTATEMENT OF LANDSCAPE CHARACTER LOST DURING CONSTRUCTION
- VISUAL SCREENING OF THE PROPOSED SCHEME FROM NEARBY RESIDENTIAL AREAS AND FOOTPATH USERS
- OFFSET BIODIVERSITY LOSSES

NOTE
TREE AND SHRUB PLANTING
- LANDSCAPE INTEGRATION AND REINSTATEMENT
- OFFSET BIODIVERSITY LOSSES

NOTE
TREE PLANTING
- LANDSCAPE INTEGRATION AND REINSTATEMENT
- OFFSET BIODIVERSITY LOSSES

NOTE
SUDDS AREA
- OFFSET BIODIVERSITY LOSSES
- DRAINAGE REQUIREMENTS

CONTINUED ON DRAWING HE604820-OIL-ELS-00-DR-CH-31002

CONTINUED ON DRAWING HE604820-OIL-ELS-00-DR-CH-31004

- NOTES**
- THIS DRAWING SHALL BE USED FOR THE PURPOSE SHOWN IN THE TITLE BOX ONLY.
 - THIS DRAWING IS TO BE READ IN CONJUNCTION WITH ALL RELEVANT DRAWINGS.
 - INDICATIVE ENVIRONMENTAL MASTERPLAN FOR CONSULTATION OVERVIEW PLAN HE604820-OIL-ELS-00-DR-LE-31000
 - INDICATIVE ENVIRONMENTAL MASTERPLAN FOR CONSULTATION SHEETS 1 TO 4 HE604820-OIL-ELS-00-DR-LE-31001 TO HE604820-OIL-ELS-00-DR-LE-31004
 - FOR LANDSCAPE ELEMENT AND ENVIRONMENTAL ELEMENT CODES REFER TO DMRB LD117 LANDSCAPE DESIGN DOCUMENT.
 - DO NOT SCALE FROM THIS DRAWING.

KEY PLAN

1:1000 0 50m 100m

| REV | DATE | REVISION NOTE | ORG | CHKD | APPD |
|-----|----------|------------------------------|------|------|------|
| P01 | 10/08/23 | FOR REVIEW AND COMMENT | LScO | SWel | PBlA |
| P02 | 22/09/23 | FOR REVIEW AND AUTHORIZATION | ACor | SWel | NGan |
| P03 | 29/09/23 | FOR REVIEW AND AUTHORIZATION | EDav | SWel | NGan |
| P04 | 11/10/23 | FOR REVIEW AND AUTHORIZATION | LScO | SWel | CF |

DESIGNER

COWI SWECO

CONTRACTOR

octavius

CLIENT

national highways

PROJECT TITLE

A46 COVENTRY JUNCTIONS (WALSGRAVE)

PROJECT STAGE

FOR STATUTORY CONSULTATION

DRAWING TITLE

**FIGURE 7.6
INDICATIVE ENVIRONMENTAL MASTERPLAN
FOR CONSULTATION SHEET 3 OF 4**

SUITABILITY

FOR REVIEW AND AUTHORIZATION

| | | | |
|------------|--------|--------|----------|
| SHEET SIZE | SCALE | STATUS | REVISION |
| A1 | 1:1000 | S4 | P04 |

DRAWING NUMBER

HE604820-OIL-ELS-00-DR-LE-31003

This drawing should not be relied on or used in circumstances other than those for which it was originally prepared and for which Sweco UK Limited & COWI UK Limited was commissioned. Sweco UK Limited & COWI UK Limited accepts no responsibility for this drawing to any party other than the person by whom it was commissioned. This drawing has been prepared on behalf of Octavius Infrastructure by Sweco UK Limited & COWI UK Limited for the titled project or named part thereof and should not be relied upon or used for any other project without an independent check being carried out as to its suitability and prior written authority of Octavius Infrastructure being obtained. Sweco UK Limited & COWI UK Limited accepts no responsibility or liability for the consequences of this drawing being used for a purpose other than the purposes for which it was commissioned. Any person using or relying on this drawing for such other purpose agrees, and will by such use or reliance be taken to confirm his/her agreement, to indemnify Sweco UK Limited & COWI UK Limited for all loss or damage resulting therefrom.

LEGEND

DRAFT ORDER LIMITS

LANDSCAPE ELEMENTS

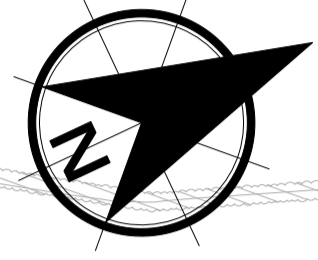
- LE1.3.1 SPECIES RICH GRASSLAND (VERGE)
- LE1.3.2 SPECIES RICH GRASSLAND
- LE2.1 WOODLAND
- LE2.6 SHRUBS
- LE2.8 SCRUB
- LE4.3 NATIVE SPECIES HEDGEROW
- LE4.4 NATIVE SPECIES HEDGEROW WITH TREES
- LE5.1.1 INDIVIDUAL TREE: SMALL SPECIES
- LE5.1.2 INDIVIDUAL TREE: MEDIUM SPECIES
- LE5.1.3 INDIVIDUAL TREE: LARGE SPECIES
- LE6.4 MARSH AND WET GRASSLAND

ENVIRONMENTAL ELEMENTS

- E2.1 ATTENUATION BASIN REFER TO DRAINAGE DESIGN

OTHER

- EXISTING VEGETATION TO BE RETAINED. (INDICATIVE EXTENTS)
- LANDFORM
- FENCING - REFER TO FENCING DESIGN
- VRS - REFER TO ROAD RESTRAINT SYSTEM DESIGN
- DRAINAGE - REFER TO DRAINAGE DESIGN
- SIGNAGE - REFER TO SIGNAGE DESIGN



- NOTES**
- THIS DRAWING SHALL BE USED FOR THE PURPOSE SHOWN IN THE TITLE BOX ONLY.
 - THIS DRAWING IS TO BE READ IN CONJUNCTION WITH ALL RELEVANT DRAWINGS:
 - INDICATIVE ENVIRONMENTAL MASTERPLAN FOR CONSULTATION OVERVIEW PLAN HE604820-OIL-ELS-00-DR-LE-31000
 - INDICATIVE ENVIRONMENTAL MASTERPLAN FOR CONSULTATION SHEETS 1 TO 4 HE604820-OIL-ELS-00-DR-LE-31001 TO HE604820-OIL-ELS-00-DR-LE-31004
 - FOR LANDSCAPE ELEMENT AND ENVIRONMENTAL ELEMENT CODES REFER TO DMRB LD117 LANDSCAPE DESIGN DOCUMENT.
 - DO NOT SCALE FROM THIS DRAWING.



| | | | | | |
|--|--|--|--|--|--|
| | | | | | |
| | | | | | |
| | | | | | |
| | | | | | |

| | | | | | |
|-----|----------|------------------------------|------|------|------|
| P01 | 10/08/23 | FOR REVIEW AND COMMENT | LScO | SWel | PBlA |
| P02 | 22/09/23 | FOR REVIEW AND AUTHORIZATION | ACor | SWel | NGan |
| P03 | 11/10/23 | FOR REVIEW AND AUTHORIZATION | LScO | SWel | CF |
| REV | DATE | REVISION NOTE | ORG | CHKD | APPD |

DESIGNER

COWI SWECO

CONTRACTOR

octavius

CLIENT

national highways

PROJECT TITLE

A46 COVENTRY JUNCTIONS (WALSGRAVE)

PROJECT STAGE

FOR STATUTORY CONSULTATION

DRAWING TITLE

**FIGURE 7.7
INDICATIVE ENVIRONMENTAL MASTERPLAN
FOR CONSULTATION SHEET 4 OF 4**

SUITABILITY

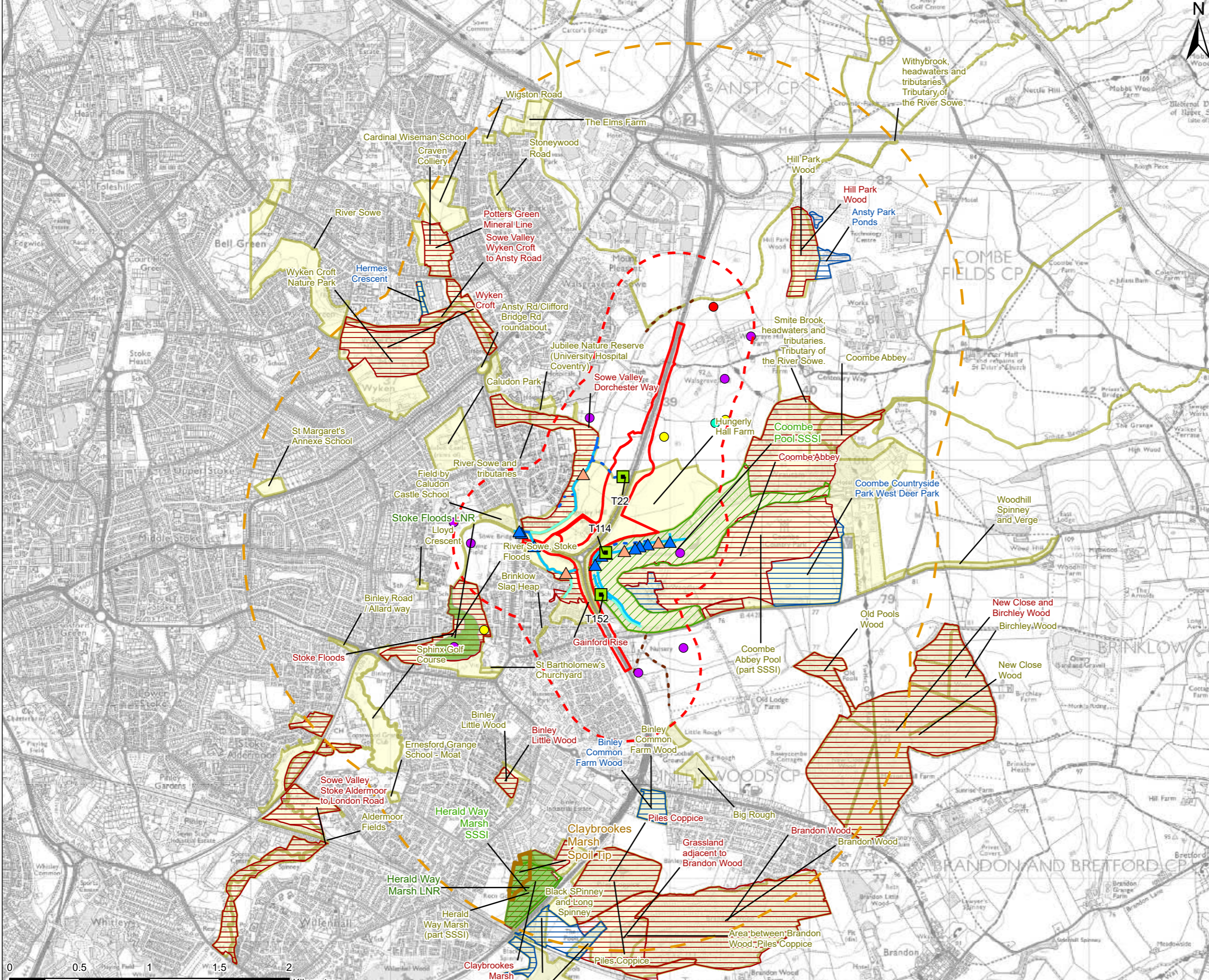
FOR REVIEW AND AUTHORIZATION

| | | | |
|------------|--------|--------|----------|
| SHEET SIZE | SCALE | STATUS | REVISION |
| A1 | 1:1000 | S4 | P03 |

DRAWING NUMBER

HE604820-OIL-ELS-00-DR-LE-31004

This drawing should not be relied on or used in circumstances other than those for which it was originally prepared and for which Sweco UK Ltd & COWI UK Limited was commissioned. Sweco UK Ltd & COWI UK Limited accepts no responsibility for this drawing to any party other than the person by whom it was commissioned. This drawing has been prepared on behalf of Octavius Infrastructure by Sweco UK Ltd & COWI UK Limited for the titled project or named part thereof and should not be relied upon or used for any other project without an independent check being carried out as to its suitability and prior written authority of Octavius Infrastructure being obtained. Sweco UK Ltd & COWI UK Limited accepts no responsibility or liability for the consequences of this drawing being used for a purpose other than the purposes for which it was commissioned. Any person using or relying on this drawing for such other purpose agrees, and will by such use or reliance be taken to confirm his/her agreement, to indemnify Sweco UK Ltd & COWI UK Limited for all loss or damage resulting therefrom.



- Legend**
- Draft Order Limits
 - Draft Order Limits - 500m Buffer
 - Draft Order Limits - 2km Buffer
 - Tree with Bat Hibernation Potential *
 - Sites of Special Scientific Interest
 - Local Nature Reserve
 - Local Wildlife Site **
 - Local Wildlife Site (Potential Site)
 - Ecosites
 - Local Geological Sites
- Great Crested Newts**
- Positive eDNA result
 - Negative eDNA result
 - Inconclusive eDNA result
 - Pond scoped out
- Otter Sign**
- ▲ Otter Field Sign
 - ▲ Otter Couch
- Water Vole Habitat Suitability**
- Optimal
 - Sub-optimal
 - Unsuitable
 - Dry watercourse
 - Scoped out watercourse
- NOTE - Coombe is also spelt as Combe in some databases. For consistency, the spelling of Coombe has been used

Invasive Non-native Species
 Rhododendron *Rhododendron ponticum* is present throughout the woodland to the north and north east of Coombe Pool adjacent to the draft order limits.

*Within the PCF stage 2 proposed scheme extent and a 50m buffer (the survey area for roosting bats) 158 trees and one group of trees, including T22, T114 and T152 shown here, were identified with bat summer roost potential. With the exception of the three trees with hibernation potential, these trees are not included on this ecological constraints figure as this would obscure the other shown ecological constraints. Trees with bat summer roost potential can be seen on Appendix A of the A46 Coventry Junctions (Walsgrave) Bat Roost Report for the preliminary design stage.

**The Lower Sowe Meadows LWS is present within 2km of the draft Order Limits, however the location was not provided by Warwickshire Biological Records Centre. Contains public sector information licensed under the Open Government Licence v3.0. Contains, or is based on, information supplied by the Environment Agency. Contains, or is based on, information supplied by Natural England.



| | | | | | |
|-----|------------|---------------|-----|------|-----|
| P03 | 11.10.2023 | MINOR UPDATES | RM | ER | BM |
| REV | DATE | REVISION NOTE | ORG | CHKD | APP |



Project Title
**A46 COVENTRY JUNCTIONS UPGRADE
 WALSGRAVE JUNCTION**

Project Stage
FOR STATUTORY CONSULTATION

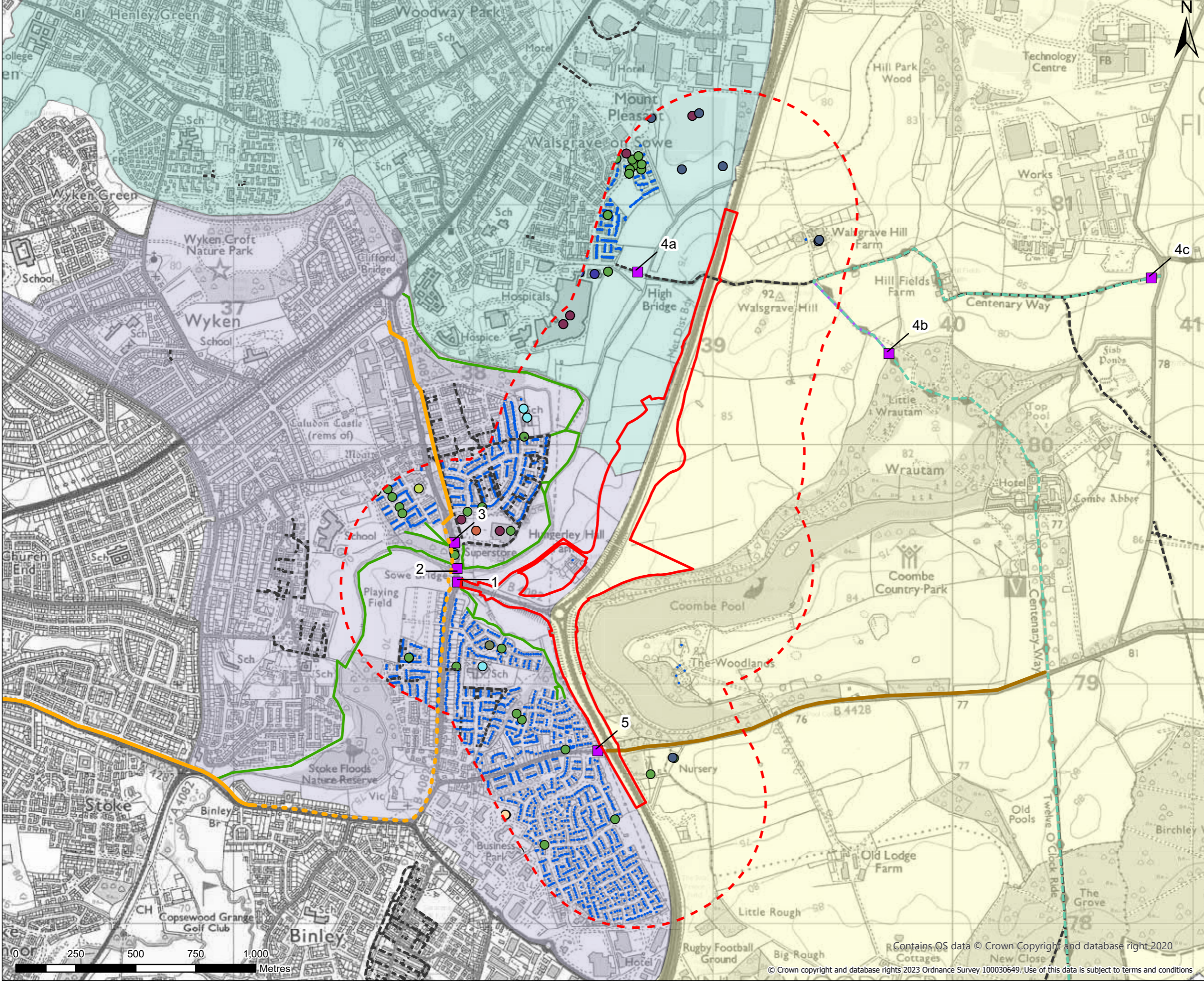
Drawing Title
**FIGURE 8.1 :
 ECOLOGICAL CONSTRAINTS**

Suitability
FOR INFORMATION

| | | | |
|------------|----------|--------|----------|
| Sheet Size | Scale | Status | Revision |
| A3 | 1:26,000 | S0 | P03 |

Drawing Number
 HE604820-OIL-EBD-00-DR-LB-30040

This drawing should not be relied on or used in circumstances other than those for which it was originally prepared and for which Sweco UK Ltd & COWI UK Limited was commissioned. Sweco UK Ltd & COWI UK Limited accepts no responsibility for this drawing to any party other than the person by whom it was commissioned. This drawing has been prepared on behalf of Octavius Infrastructure by Sweco UK Ltd & COWI UK Limited for the titled project or named part thereof and should not be relied upon or used for any other project without an independent check being carried out as to its suitability and prior written authority of Octavius Infrastructure being obtained. Sweco UK Ltd & COWI UK Limited accepts no responsibility or liability for the consequences of this drawing being used for a purpose other than the purposes for which it was commissioned. Any person using or relying on this drawing for such other purpose agrees, and will by such use or reliance be taken to confirm his/her agreement, to indemnify Sweco UK Ltd & COWI UK Limited for all loss or damage resulting therefrom.



- Legend**
- - - Draft Order Limits
 - Draft Order Limits - 500m Buffer
 - WCH Surveys
 - - - Public Right of Way
 - - - National Trail Route
 - Existing Footway to Coombe Park
 - Existing Permissive Path
 - Existing Informal/Recreational Footpath
 - Binley Cycleway
 - - - Binley Cycleway (proposed)
- District Ward**
- Henley Ward
 - Revel and Binley Woods Ward
 - Wyken Ward
- Residential Property**
- Dwelling (3475)
- Commercial Property and Community Asset**
- Community Services (1)
 - Education (14)
 - Emergency / Rescue Service (1)
 - Hotel / Motel / Boarding / Guest House (1)
 - Industrial; (25)
 - Leisure (1)
 - Medical (8)
 - Office (5)
 - Retail (22)
 - Storage Land (8)
 - Utility (65)



| | | | | | |
|-----|------------|---------------|-----|------|-----|
| P02 | 06.09.2023 | MINOR UPDATES | AC | CC | CF |
| REV | DATE | REVISION NOTE | ORG | CHKD | APP |



Project Title
A46 COVENTRY JUNCTIONS (WALSGRAVE)

Project Stage
FOR STATUTORY CONSULTATION

Drawing Title
FIGURE 11.1 : POPULATION AND HUMAN HEALTH CONSTRAINTS

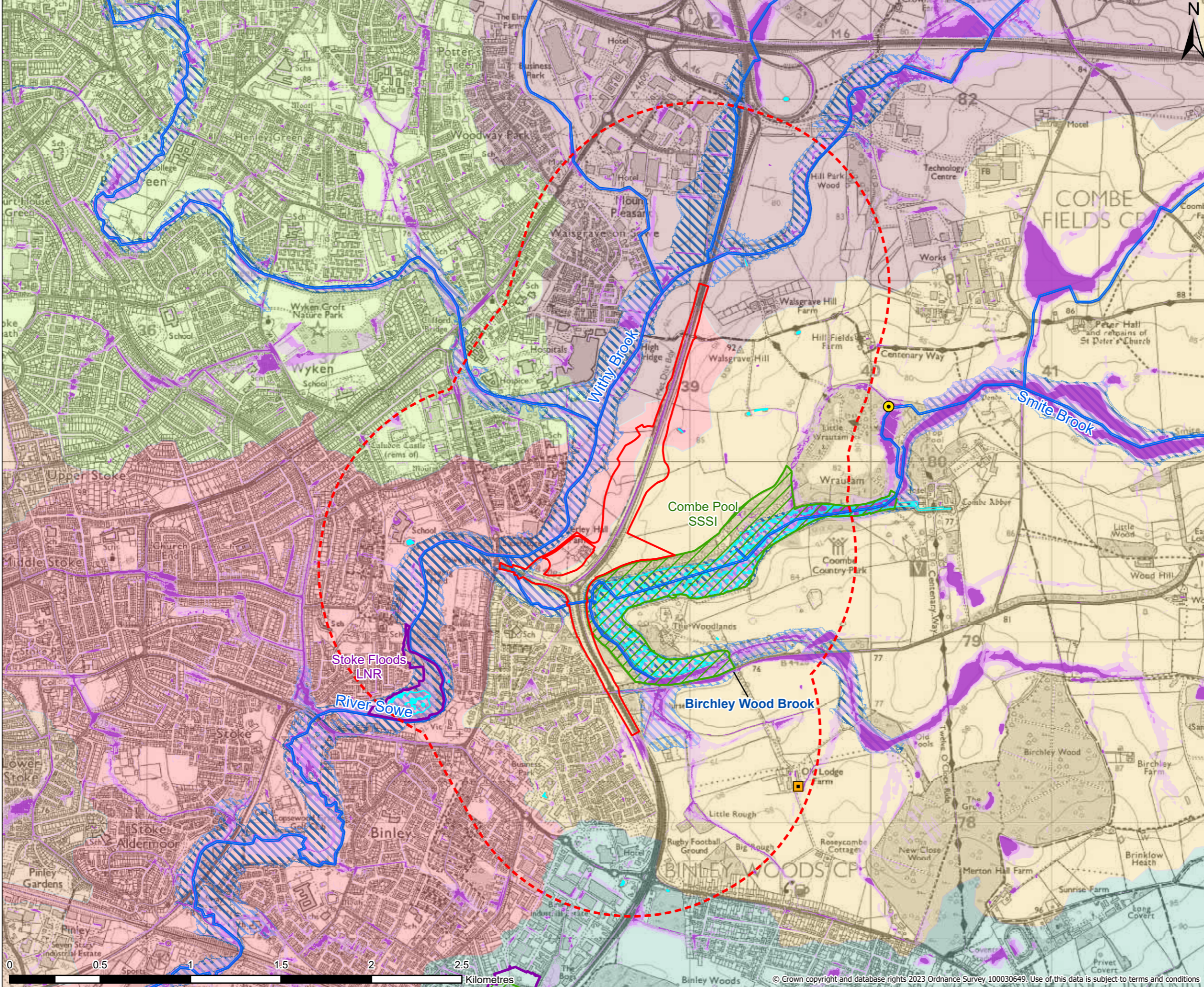
Suitability
FOR INFORMATION

| | | | |
|------------|----------|--------|----------|
| Sheet Size | Scale | Status | Revision |
| A3 | 1:15,000 | S0 | P02 |

Drawing Number
HE604820-OIL-EPH-00-DR-LX-30002

Contains OS data © Crown Copyright and database right 2020
© Crown copyright and database rights 2023 Ordnance Survey 100030649. Use of this data is subject to terms and conditions

This drawing should not be relied on or used in circumstances other than those for which it was originally prepared and for which Sweco UK Ltd & COWI UK Limited was commissioned. Sweco UK Ltd & COWI UK Limited accepts no responsibility for this drawing to any party other than the person by whom it was commissioned. This drawing has been prepared on behalf of Octavius Infrastructure by Sweco UK Ltd & COWI UK Limited for the titled project or named part thereof and should not be relied upon or used for any other project without an independent check being carried out as to its suitability and prior written authority of Octavius Infrastructure being obtained. Sweco UK Ltd & COWI UK Limited accepts no responsibility or liability for the consequences of this drawing being used for a purpose other than the purposes for which it was commissioned. Any person using or relying on this drawing for such other purpose agrees, and will by such use or reliance be taken to confirm his/her agreement, to indemnify Sweco UK Ltd & COWI UK Limited for all loss or damage resulting therefrom.



Legend

- Draft Order Limits
- Draft Order Limits - 1km Buffer
- Surface Water Abstraction
- Surface Water Discharge Consent
- Watercourse
- Ponds / Lakes
- Flood Zone 3
- Flood Zone 2
- Risk of Flooding from Surface Water - High
- Risk of Flooding from Surface Water - Medium
- Risk of Flooding from Surface Water - Low
- Sites of Special Scientific Interest (SSSI)
- Local Nature Reserve (LNR)

WFD Surface Waterbody Catchments

- Avon - Claycoton/Yelvertoft Bk to conf R Sowe
- Sherbourne - source to conf R Sowe
- Smite Bk - source to conf R Sowe
- Sowe - conf Breach Bk to conf Withy Bk
- Sowe - conf Withy Bk to conf R Avon
- Withy Bk - source to conf R Sowe

Contains public sector information licensed under the Open Government Licence v3.0. Contains, or is based on, information supplied by the Environment Agency. Contains, or is based on, information supplied by Natural England.



| | | | | | |
|-----|------------|---------------|-----|------|-----|
| P02 | 06.09.2023 | FIRST ISSUE | RM | KD | JB |
| REV | DATE | REVISION NOTE | ORG | CHKD | APP |

Designer

COWI SWECO

Contractor

octavius

Client

national highways

Project Title
A46 COVENTRY JUNCTIONS (WALSGRAVE)

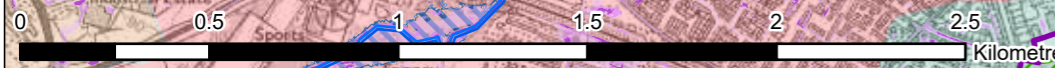
Project Stage
FOR STATUTORY CONSULTATION

Drawing Title
FIGURE 12.1 : SURFACE WATER

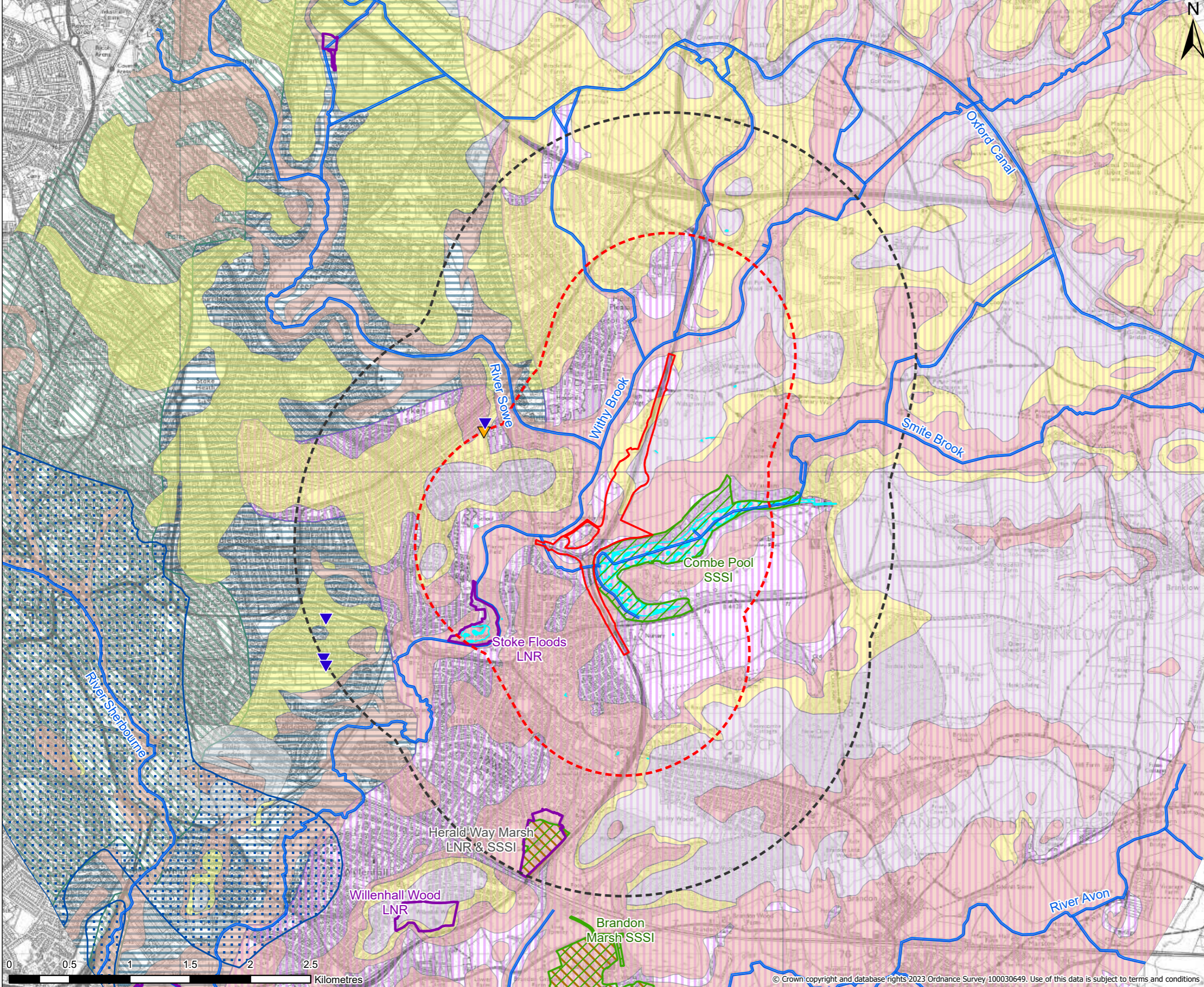
Suitability
FOR INFORMATION

| | | | |
|------------|----------|--------|----------|
| Sheet Size | Scale | Status | Revision |
| A3 | 1:20,000 | S0 | P02 |

Drawing Number
HE604820-OIL-EWE-00-DR-LW-30001



This drawing should not be relied on or used in circumstances other than those for which it was originally prepared and for which Sweco UK Ltd & COWI UK Limited was commissioned. Sweco UK Ltd & COWI UK Limited accepts no responsibility for this drawing to any party other than the person by whom it was commissioned. This drawing has been prepared on behalf of Octavius Infrastructure by Sweco UK Ltd & COWI UK Limited for the titled project or named part thereof and should not be relied upon or used for any other project without an independent check being carried out as to its suitability and prior written authority of Octavius Infrastructure being obtained. Sweco UK Ltd & COWI UK Limited accepts no responsibility or liability for the consequences of this drawing being used for a purpose other than the purposes for which it was commissioned. Any person using or relying on this drawing for such other purpose agrees, and will by such use or reliance be taken to confirm his/her agreement, to indemnify Sweco UK Ltd & COWI UK Limited for all loss or damage resulting therefrom.



- Legend**
- Draft Order Limits
 - Draft Order Limits - 1km buffer
 - Draft Order Limits - 2km Buffer
 - ▼ Active Groundwater Abstraction Location
 - ▼ Historical Groundwater Abstraction Location
 - Watercourse
 - Ponds / Lakes
 - Sites of Special Scientific Interest (SSSI)
 - Local Nature Reserve (LNR)
 - Groundwater Dependent Terrestrial Ecosystems
- Source Protection Zones**
- Zone III - Total Catchment
- Aquifer Designation (Superficial Deposits)**
- Secondary A
 - Secondary (undifferentiated)
 - Unproductive
- WFD Groundwater Bodies**
- Warwickshire Avon - Coal Measures Coventry
 - Warwickshire Avon - PT Sandstone Warwick/Avon Confined
 - Warwickshire Avon - Secondary Mudrocks



| | | | | | |
|-----|------------|---------------|-----|------|-----|
| P02 | 06.09.2023 | MINOR UPDATES | PK | KD | JB |
| REV | DATE | REVISION NOTE | ORG | CHKD | APP |



Project Title
A46 COVENTRY JUNCTIONS (WALSGRAVE)

Project Stage
FOR STATUTORY CONSULTATION

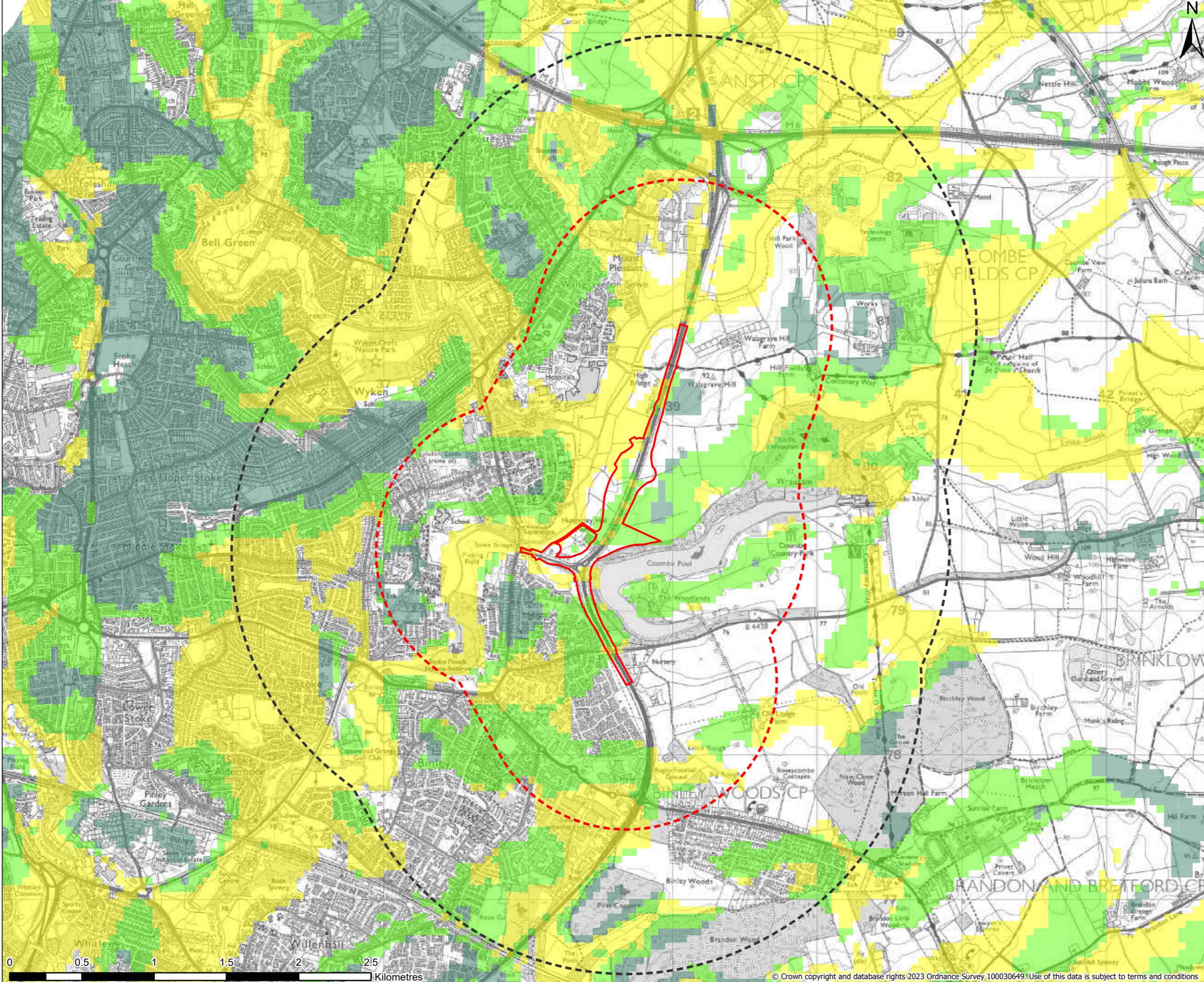
Drawing Title
FIGURE 12.2 : GROUNDWATER

Suitability
FOR INFORMATION

| | | | |
|----------------|---------------------------------|--------|----------|
| Sheet Size | Scale | Status | Revision |
| A3 | 1:30,000 | S0 | P02 |
| Drawing Number | HE604820-OIL-EWE-00-DR-LW-30002 | | |



This drawing should not be relied on or used in circumstances other than those for which it was originally prepared and for which Sweco UK Ltd & COWI UK Limited was commissioned. Sweco UK Ltd & COWI UK Limited accepts no responsibility for this drawing to any party other than the person by whom it was commissioned. This drawing has been prepared on behalf of Octavius Infrastructure by Sweco UK Ltd & COWI UK Limited for the titled project or named part thereof and should not be relied upon or used for any other project without an independent check being carried out as to its suitability and prior written authority of Octavius Infrastructure being obtained. Sweco UK Ltd & COWI UK Limited accepts no responsibility or liability for the consequences of this drawing being used for a purpose other than the purposes for which it was commissioned. Any person using or relying on this drawing for such other purpose agrees, and will by such use or reliance be taken to confirm his/her agreement, to indemnify Sweco UK Ltd & COWI UK Limited for all loss or damage resulting therefrom.



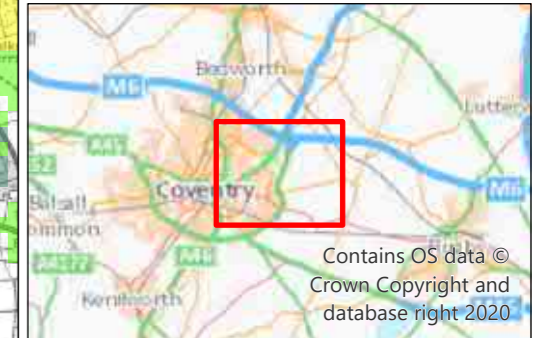
Legend

- Draft Order Limits
- Draft Order Limits - 1km buffer
- Draft Order Limits - 2km Buffer

Groundwater Flooding

- Limited potential for groundwater flooding to occur
- Potential for groundwater flooding of property situated below ground level
- Potential for groundwater flooding to occur at surface

Contains British Geological Survey materials © UKRI 2023. Licence No. 2021/3PDL/853452 British Geological Survey © NERC All rights reserved.



| | | | | | |
|-----|------------|---------------|-----|------|-----|
| P02 | 21.09.2023 | FIGURE UPDATE | PK | KD | JB |
| REV | DATE | REVISION NOTE | ORG | CHKD | APP |

Designer

COWI SWECO

Contractor

octavius

Client

national highways

Project Title
A46 COVENTRY JUNCTIONS (WALSGRAVE)

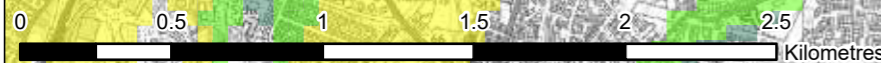
Project Stage
FOR STATUTORY CONSULTATION

Drawing Title
FIGURE 12.3 : GROUNDWATER FLOODING

Suitability
FOR INFORMATION

| | | | |
|------------|----------|--------|----------|
| Sheet Size | Scale | Status | Revision |
| A3 | 1:25,000 | S0 | P02 |

Drawing Number
HE604820-OIL-EWE-00-DR-LW-30006



If you need help accessing this or any other National Highways information, please call **0300 123 5000** and we will help you.



© Crown copyright 2023.

You may re-use this information (not including logos) free of charge in any format or medium, under the terms of the Open Government Licence.

To view this licence:
visit www.nationalarchives.gov.uk/doc/open-government-licence/write-to-the-Information-Policy-Team, The National Archives, Kew, London TW9 4DU, or email psi@nationalarchives.gsi.gov.uk.

Mapping (where present): © Crown copyright and database rights 2023 OS AC0000827444. You are permitted to use this data solely to enable you to respond to, or interact with, the organisation that provided you with the data. You are not permitted to copy, sub-licence, distribute or sell any of this data to third parties in any form.

This document is also available on our website at www.nationalhighways.co.uk

For an accessible version of this publication please call **0300 123 5000** and we will help you.

If you have any enquiries about this publication email info@nationalhighways.co.uk or call **0300 123 5000**.*

Please quote the National Highways publications code PR70/23.
National Highways creative job number CRE23_0461

*Calls to 03 numbers cost no more than a national rate call to an 01 or 02 number and must count towards any inclusive minutes in the same way as 01 and 02 calls. These rules apply to calls from any type of line including mobile, BT, other fixed line or payphone. Calls may be recorded or monitored.

Printed on paper from well-managed forests and other controlled sources when issued directly by National Highways.

Registered office Bridge House, 1 Walnut Tree Close, Guildford GU1 4LZ

National Highways Company Limited registered in England and Wales number 09346363