

A46 Coventry junctions
(Walsgrave)

**Preliminary Environmental
Information Report Figures**

Part one

October 2023

Table of contents

1.	Introduction	1
2.	List of figures	2

1. Introduction

This document lists the supporting figures that support the Preliminary Environmental Information prepared for statutory consultation.

The figures form Volume 2 of the Preliminary Environmental Information. Volume 1 is the Preliminary Environmental Information Report, and a Non-Technical Summary of the Preliminary Environmental Information Report forms Volume 3.

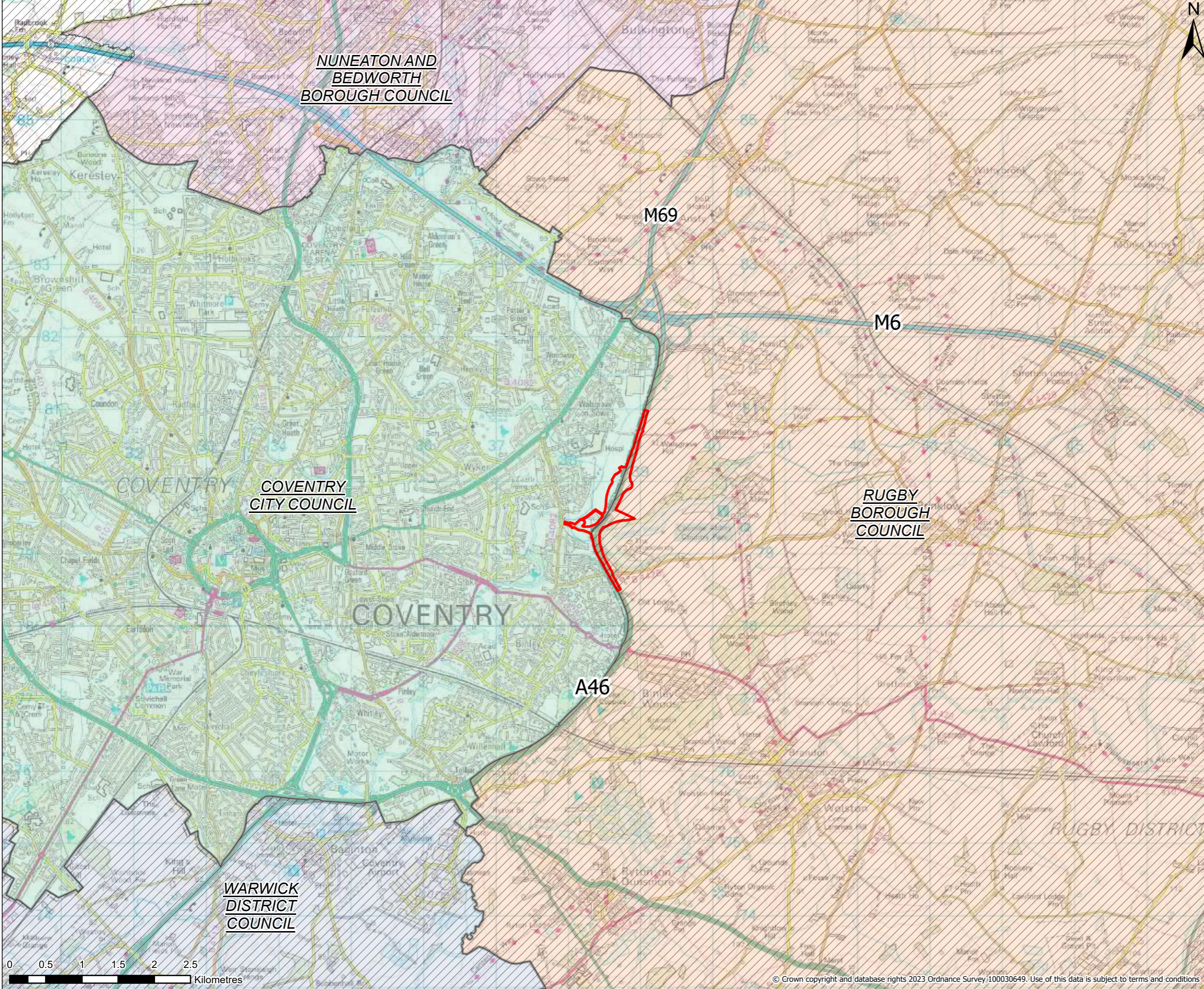
These documents produced to support the statutory public consultation are available at: <https://nationalhighways.co.uk/our-roads/west-midlands/a46-coventry-junctions-upgrade/>.

2. List of figures

The following figures have been produced to support the Preliminary Environmental Information Report (Volume 1) and are available at: <https://nationalhighways.co.uk/our-roads/west-midlands/a46-coventry-junctions-upgrade/>.

Figure number	Figure name
Part one	
Figure 2.1	Location plan
Figure 2.2	Indicative Scheme Extent
Figure 2.3	Environmental Constraints
Figure 5.1	Air Quality Management Areas (AQMAS)
Figure 5.2	Nearby Local Authority Monitoring Sites
Figure 5.3	Preliminary Operational Phase Sensitive Receptors Within 200m Of Realigned Existing Roads, New Roads and New Junctions
Figure 5.4	Construction Phase Sensitive Receptors
Figure 6.1	Designated Heritage Sites
Figure 6.2	Non Designated Heritage Sites
Figure 6.3	Heritage Events
Figure 7.1	Landscape Character
Figure 7.2	Viewpoint locations, ZTV and public paths
Figure 7.3	Indicative Environmental Masterplan For Consultation Overview
Figure 7.4	Indicative Environmental Masterplan For Consultation Sheet 1 of 4
Part two	
Figure 7.5	Indicative Environmental Masterplan For Consultation Sheet 2 of 4
Figure 7.6	Indicative Environmental Masterplan For Consultation Sheet 3 of 4
Figure 7.7	Indicative Environmental Masterplan For Consultation Sheet 4 of 4
Figure 8.1	Ecological Constraints
Figure 11.1	Population and Human Health Constraints
Figure 12.1	Surface water
Figure 12.2	Groundwater
Figure 12.3	Groundwater flooding

This drawing should not be relied on or used in circumstances other than those for which it was originally prepared and for which Sweco UK Ltd & COWI UK Limited was commissioned. Sweco UK Ltd & COWI UK Limited accepts no responsibility for this drawing to any party other than the person by whom it was commissioned. This drawing has been prepared on behalf of Octavius Infrastructure by Sweco UK Ltd & COWI UK Limited for the titled project or named part thereof and should not be relied upon or used for any other project without an independent check being carried out as to its suitability and prior written authority of Octavius Infrastructure being obtained. Sweco UK Ltd & COWI UK Limited accepts no responsibility or liability for the consequences of this drawing being used for a purpose other than the purposes for which it was commissioned. Any person using or relying on this drawing for such other purpose agrees, and will by such use or reliance be taken to confirm his/her agreement, to indemnify Sweco UK Ltd & COWI UK Limited for all loss or damage resulting therefrom.

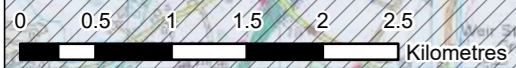
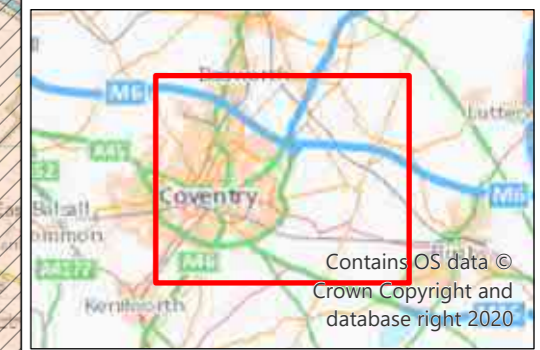


Legend

- Draft Order Limits
- Tier 1 Council**
- Warwickshire County Council
- Tier 2 District Councils**
- Coventry City Council
- Rugby Borough Council
- Warwick District Council
- Nuneaton and Bedworth Borough Council



Contains public sector information licensed under the Open Government Licence v3.0.



P03	11.10.2023	MINOR UPDATES	AC	LP	CF
REV	DATE	REVISION NOTE	ORG	CHKD	APP

Designer

Contractor

Client

Project Title
A46 COVENTRY JUNCTIONS (WALSGRAVE)

Project Stage
FOR STATUTORY CONSULTATION

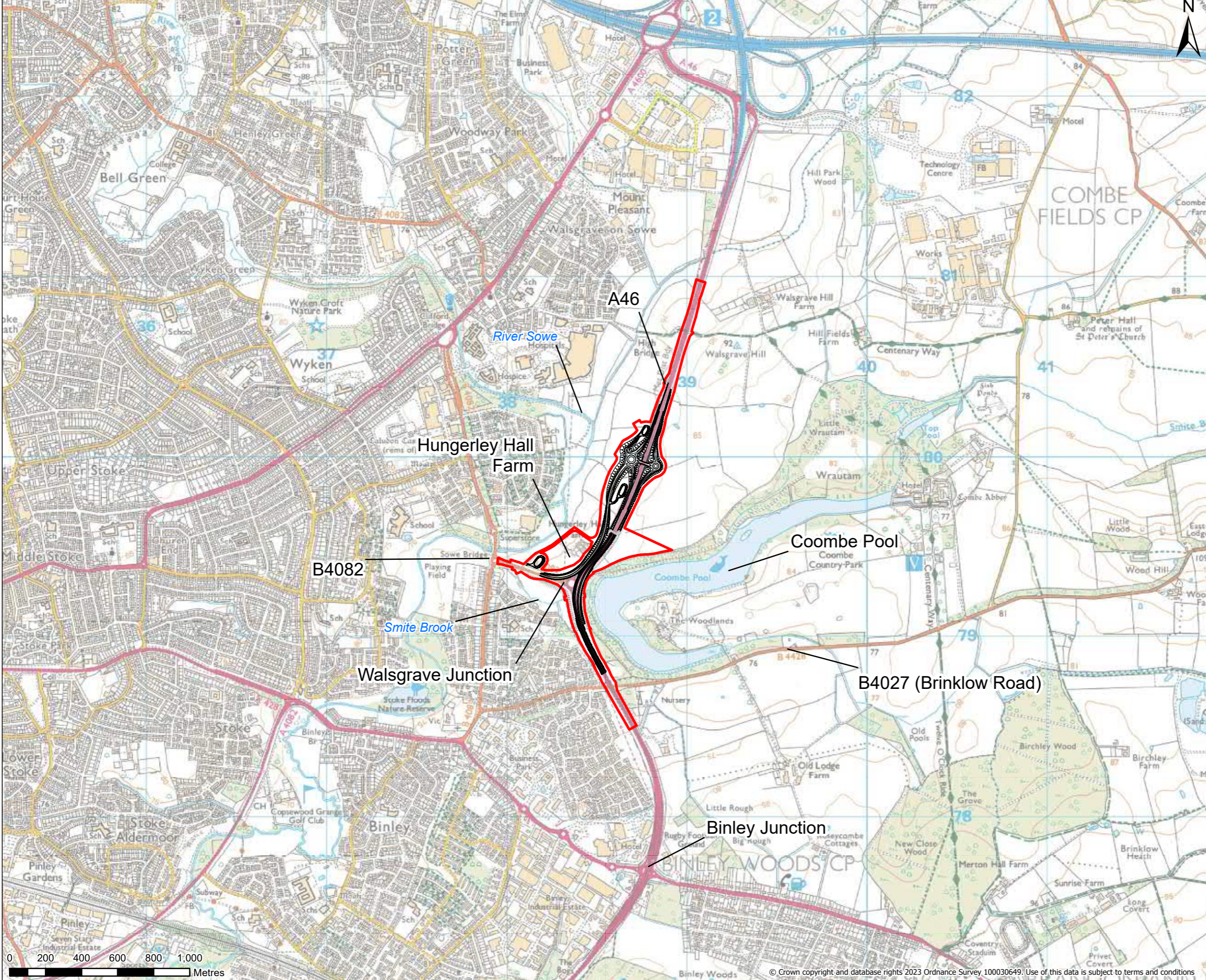
Drawing Title
FIGURE 2.1 : LOCATION PLAN

Suitability
FOR INFORMATION

Sheet Size	Scale	Status	Revision
A3	1:50,000	S0	P03

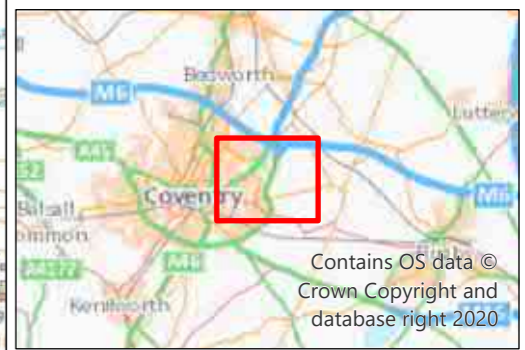
Drawing Number
HE604820-OIL-EGN-00-DR-LX-30002

This drawing should not be relied on or used in circumstances other than those for which it was originally prepared and for which Sweco UK Ltd & COWI UK Limited was commissioned. Sweco UK Ltd & COWI UK Limited accepts no responsibility for this drawing to any party other than the person by whom it was commissioned. This drawing has been prepared on behalf of Octavius Infrastructure by Sweco UK Ltd & COWI UK Limited for the titled project or named part thereof and should not be relied upon or used for any other project without an independent check being carried out as to its suitability and prior written authority of Octavius Infrastructure being obtained. Sweco UK Ltd & COWI UK Limited accepts no responsibility or liability for the consequences of this drawing being used for a purpose other than the purposes for which it was commissioned. Any person using or relying on this drawing for such other purpose agrees, and will by such use or reliance be taken to confirm his/her agreement, to indemnify Sweco UK Ltd & COWI UK Limited for all loss or damage resulting therefrom.



Legend

- Proposed Scheme Design
- Draft Order Limits



P02	20.09.2023	MINOR UPDATES	AC	LP	CF
REV	DATE	REVISION NOTE	ORG	CHKD	APP

Designer

Contractor

Client

Project Title
A46 COVENTRY JUNCTIONS (WALSGRAVE)

Project Stage
FOR STATUTORY CONSULTATION

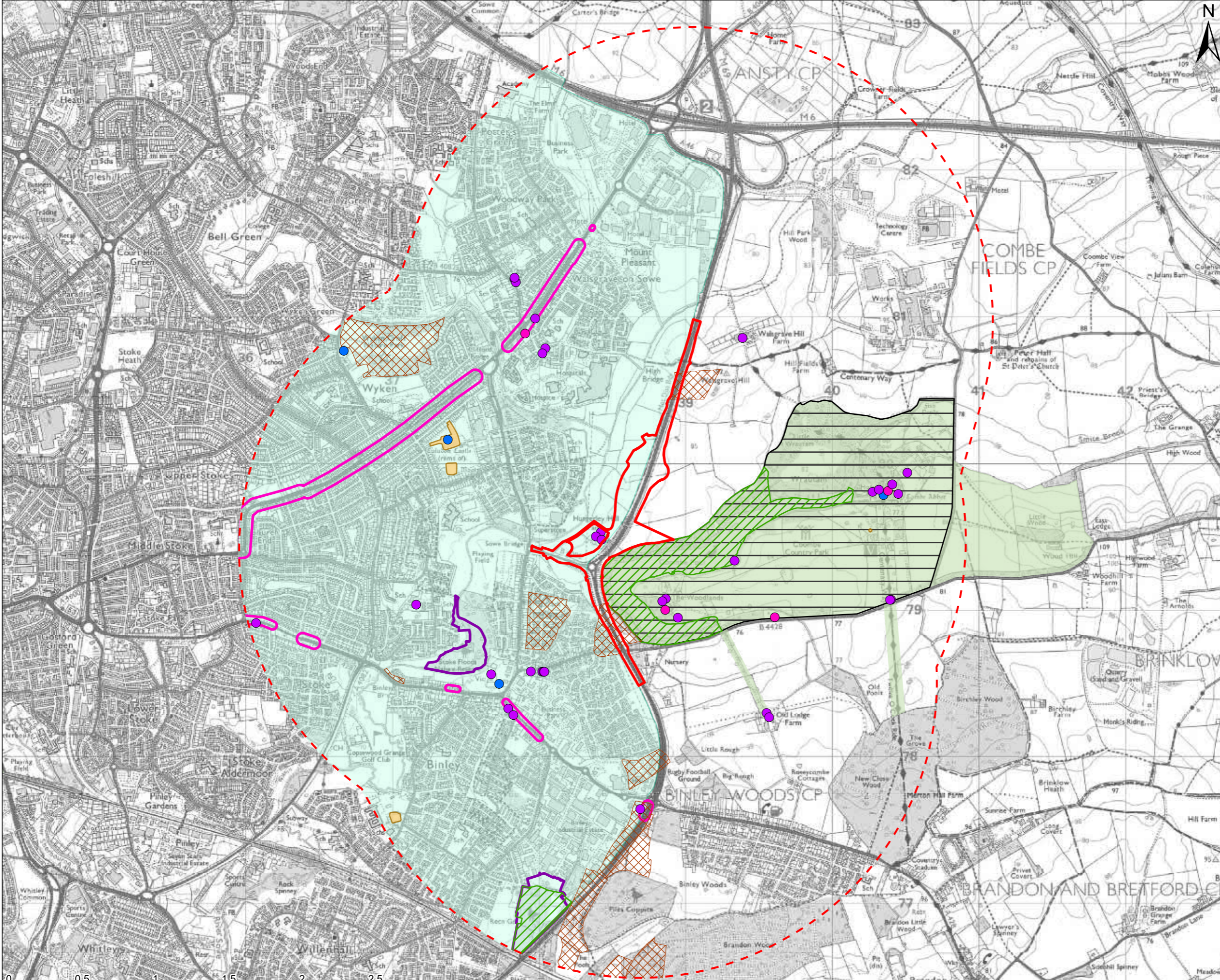
Drawing Title
**FIGURE 2.2 :
INDICATIVE SCHEME EXTENT**

Suitability
FOR INFORMATION

Sheet Size	Scale	Status	Revision
A3	1:20,000	S0	P02

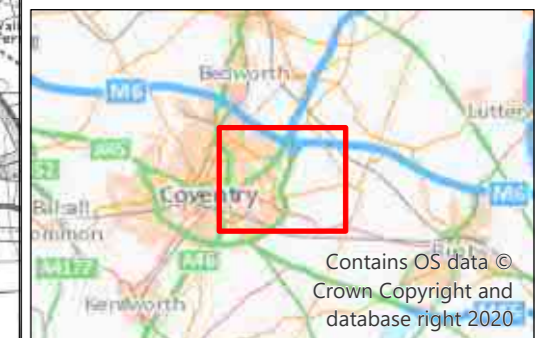
Drawing Number
HE604820-OIL-EGN-00-DR-LX-30002

This drawing should not be relied on or used in circumstances other than those for which it was originally prepared and for which Sweco UK Ltd & COWI UK Limited was commissioned. Sweco UK Ltd & COWI UK Limited accepts no responsibility for this drawing to any party other than the person by whom it was commissioned. This drawing has been prepared on behalf of Octavius Infrastructure by Sweco UK Ltd & COWI UK Limited for the titled project or named part thereof and should not be relied upon or used for any other project without an independent check being carried out as to its suitability and prior written authority of Octavius Infrastructure being obtained. Sweco UK Ltd & COWI UK Limited accepts no responsibility or liability for the consequences of this drawing being used for a purpose other than the purposes for which it was commissioned. Any person using or relying on this drawing for such other purpose agrees, and will by such use or reliance be taken to confirm his/her agreement, to indemnify Sweco UK Ltd & COWI UK Limited for all loss or damage resulting therefrom.



- Legend**
- Draft Order Limits
 - Draft Order Limits - 2km Buffer
 - Grade I
 - Grade II
 - Grade II*
 - Air Quality Management Area
 - Local Nature Reserve
 - Historic Landfill Site
 - Registered Parks and Gardens
 - Noise Important Area
 - Scheduled Monument
 - Sites of Special Scientific Interest
 - Coombe Abbey Conservation Area

Contains public sector information licensed under the Open Government Licence v3.0.
 Contains, or is based on, information supplied by the Environment Agency.
 Contains, or is based on, information supplied by Natural England.
 © Historic England 2023.



P03	11.10.2023	MINOR UPDATES	AC	LP	CF
REV	DATE	REVISION NOTE	ORG	CHKD	APP



Project Title
A46 COVENTRY JUNCTIONS (WALSGRAVE)

Project Stage
FOR STATUTORY CONSULTATION

Drawing Title
FIGURE 2.3 : ENVIRONMENTAL CONSTRAINTS

Sustainability
FOR INFORMATION

Sheet Size	Scale	Status	Revision
A3	1:25,000	S0	P03

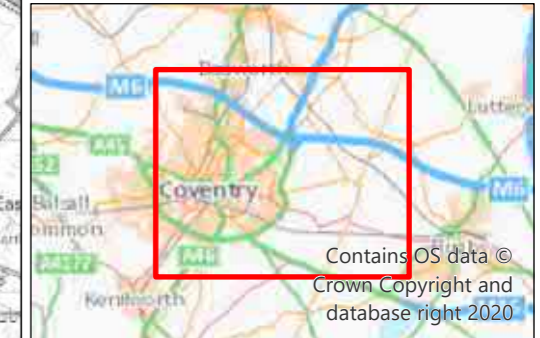
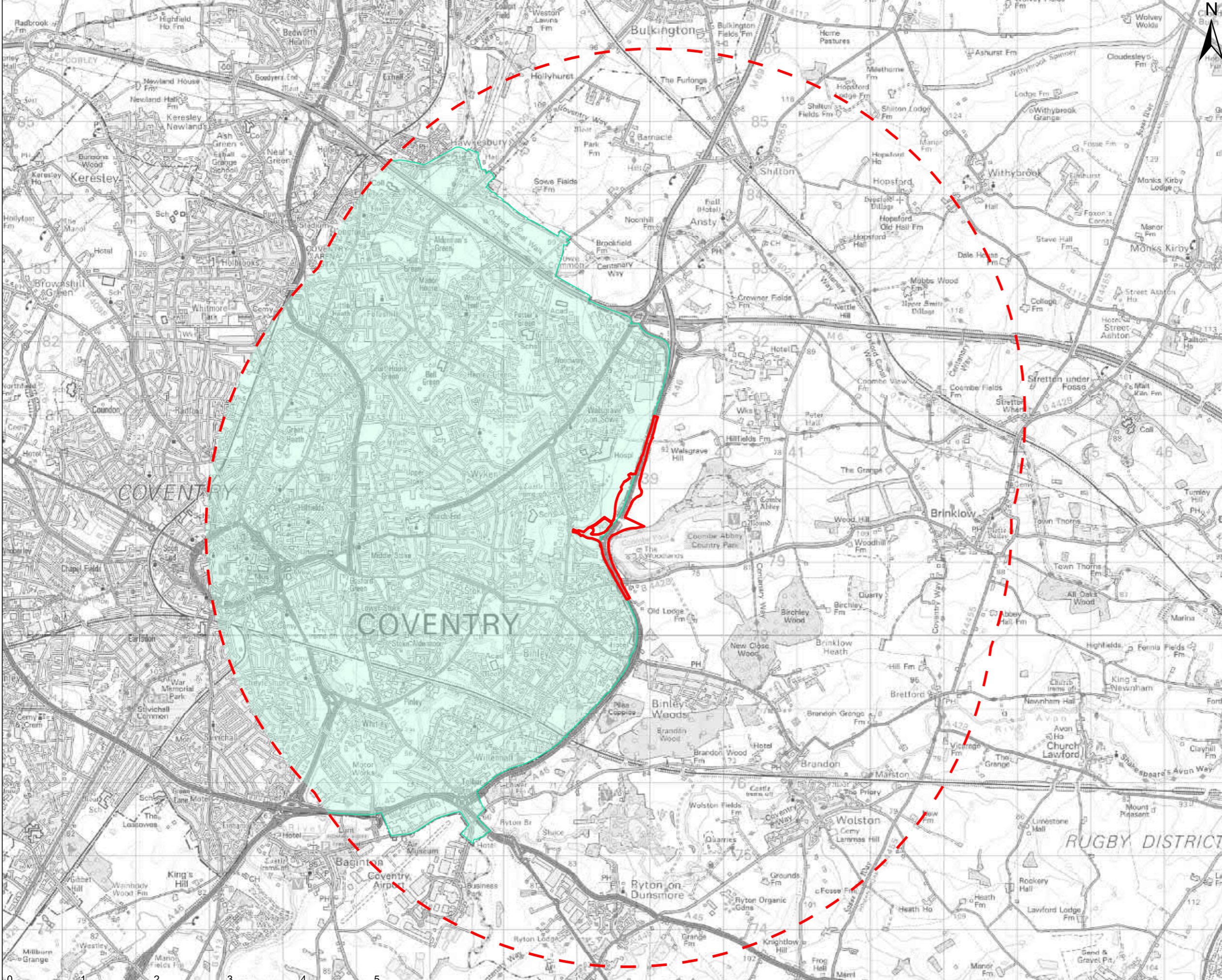
Drawing Number
HE604820-OIL-EGN-00-DR-LX-30006



This drawing should not be relied on or used in circumstances other than those for which it was originally prepared and for which Sweco UK Ltd & COWI UK Limited was commissioned. Sweco UK Ltd & COWI UK Limited accepts no responsibility for this drawing to any party other than the person by whom it was commissioned. This drawing has been prepared on behalf of Octavius Infrastructure by Sweco UK Ltd & COWI UK Limited for the titled project or named part thereof and should not be relied upon or used for any other project without an independent check being carried out as to its suitability and prior written authority of Octavius Infrastructure being obtained. Sweco UK Ltd & COWI UK Limited accepts no responsibility or liability for the consequences of this drawing being used for a purpose other than the purposes for which it was commissioned. Any person using or relying on this drawing for such other purpose agrees, and will by such use or reliance be taken to confirm his/her agreement, to indemnify Sweco UK Ltd & COWI UK Limited for all loss or damage resulting therefrom.

Legend

- Draft Order Limits
- Draft Order Limits - 5km Buffer
- Air Quality Management Areas (AQMAS)



P02	20.09.2023	FIRST ISSUE	PK	MB	DM
REV	DATE	REVISION NOTE	ORG	CHKD	APP

Designer

COWI SWECO

Contractor

octavius

Client

national highways

Project Title
A46 COVENTRY JUNCTIONS (WALSGRAVE)

Project Stage
FOR STATUTORY CONSULTATION

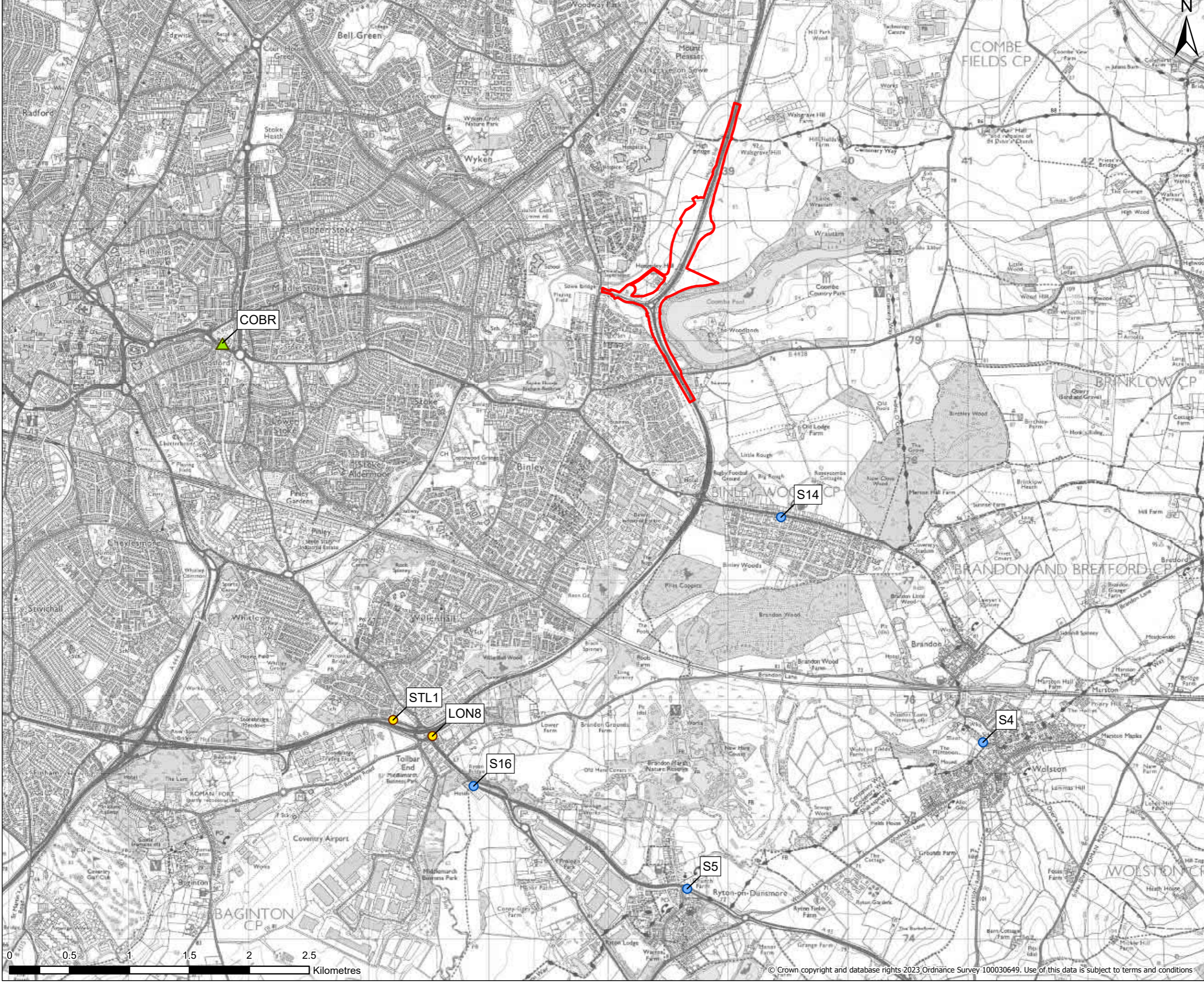
Drawing Title
FIGURE 5.1 : AIR QUALITY MANAGEMENT AREAS (AQMAS)

Suitability
FOR INFORMATION

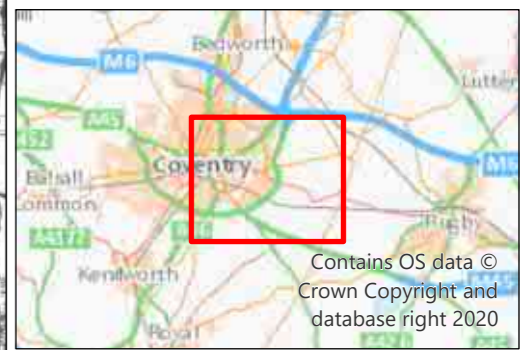
Sheet Size	Scale	Status	Revision
A3	1:50,000	S0	P02

Drawing Number
HE604820-OIL-EAQ-00-DR-LA-30003

This drawing should not be relied on or used in circumstances other than those for which it was originally prepared and for which Sweco UK Ltd & COWI UK Limited was commissioned. Sweco UK Ltd & COWI UK Limited accepts no responsibility for this drawing to any party other than the person by whom it was commissioned. This drawing has been prepared on behalf of Octavius Infrastructure by Sweco UK Ltd & COWI UK Limited for the titled project or named part thereof and should not be relied upon or used for any other project without an independent check being carried out as to its suitability and prior written authority of Octavius Infrastructure being obtained. Sweco UK Ltd & COWI UK Limited accepts no responsibility or liability for the consequences of this drawing being used for a purpose other than the purposes for which it was commissioned. Any person using or relying on this drawing for such other purpose agrees, and will by such use or reliance be taken to confirm his/her agreement, to indemnify Sweco UK Ltd & COWI UK Limited for all loss or damage resulting therefrom.



- Legend**
- Draft Order Limits
 - ▲ Automatic Monitoring Sites
 - Passive Monitoring Sites
 - Within Coventry City Council
 - Within Rugby Borough Council



P02	20.09.2023	FIRST ISSUE	PK	MB	DP
REV	DATE	REVISION NOTE	ORG	CHKD	APP



Project Title
A46 COVENTRY JUNCTIONS (WALSGRAVE)

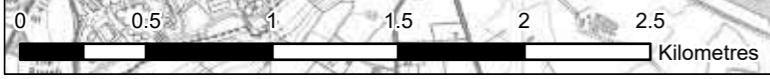
Project Stage
FOR STATUTORY CONSULTATION

Drawing Title
FIGURE 5.2 : NEARBY LOCAL AUTHORITY MONITORING SITES

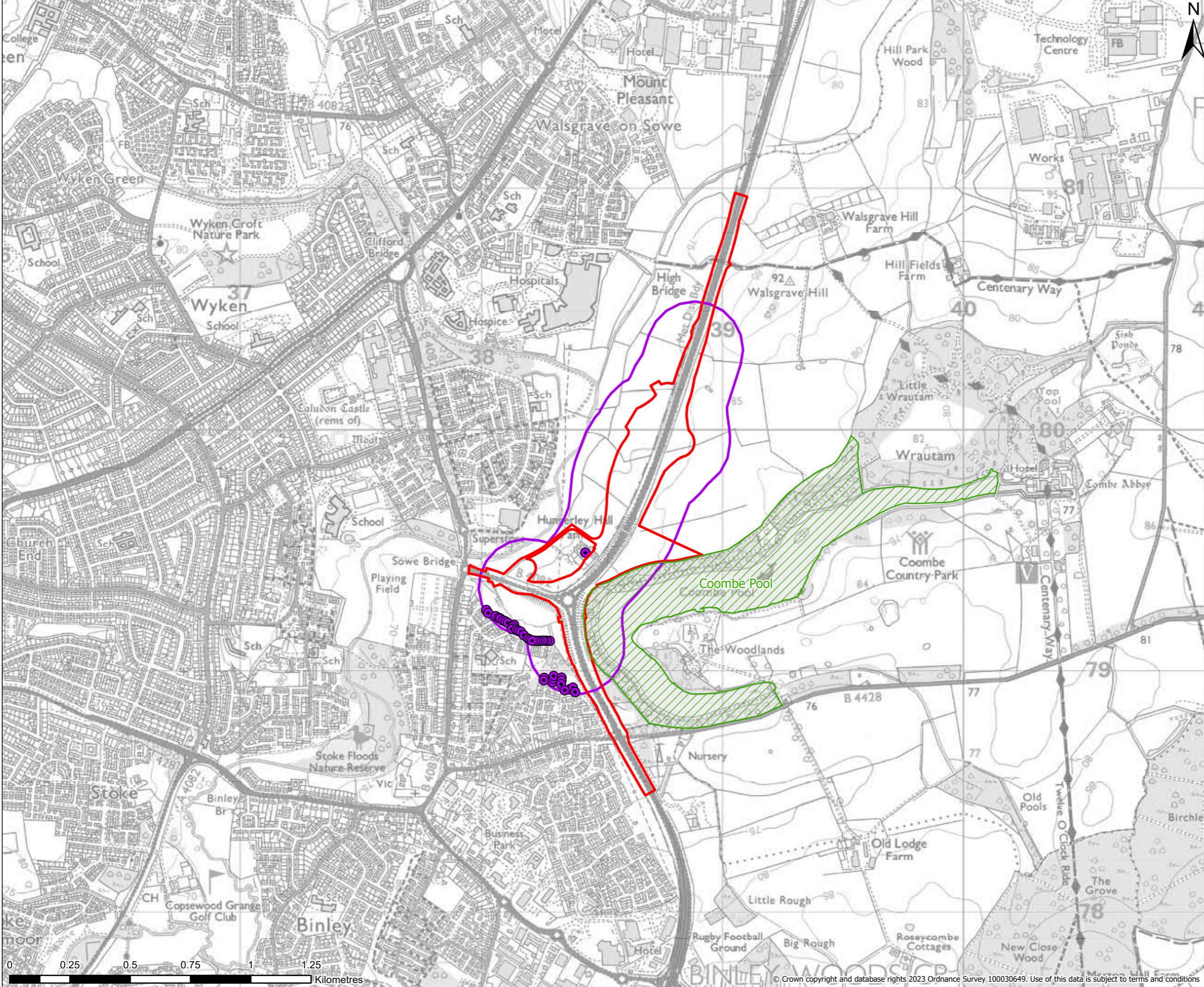
Suitability
FOR INFORMATION

Sheet Size	Scale	Status	Revision
A3	1:30,000	S0	P02

Drawing Number
HE604820-OIL-EAQ-00-DR-LA-30004



This drawing should not be relied on or used in circumstances other than those for which it was originally prepared and for which Sweco UK Ltd & COWI UK Limited was commissioned. Sweco UK Ltd & COWI UK Limited accepts no responsibility for this drawing to any party other than the person by whom it was commissioned. This drawing has been prepared on behalf of Octavius Infrastructure by Sweco UK Ltd & COWI UK Limited for the titled project or named part thereof and should not be relied upon or used for any other project without an independent check being carried out as to its suitability and prior written authority of Octavius Infrastructure being obtained. Sweco UK Ltd & COWI UK Limited accepts no responsibility or liability for the consequences of this drawing being used for a purpose other than the purposes for which it was commissioned. Any person using or relying on this drawing for such other purpose agrees, and will by such use or reliance be taken to confirm his/her agreement, to indemnify Sweco UK Ltd & COWI UK Limited for all loss or damage resulting therefrom.



- Legend**
- Draft Order Limits
 - Sensitive Human Receptors (Preliminary Review)
 - New/Realigned Roads 200m Buffer
 - Coombe Pool SSSI



P01	20.09.2023	FIRST ISSUE	RM	MB	DP
REV	DATE	REVISION NOTE	ORG	CHKD	APP



Project Title
A46 COVENTRY JUNCTIONS (WALSGRAVE)

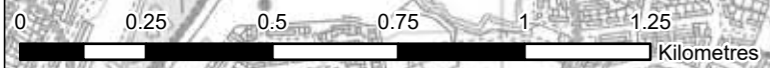
Project Stage
FOR STATUTORY CONSULTATION

Drawing Title
FIGURE 5.3: PRELIMINARY OPERATIONAL PHASE SENSITIVE RECEPTORS WITHIN 200M OF REALIGNED EXISTING ROADS, NEW ROADS AND NEW JUNCTIONS

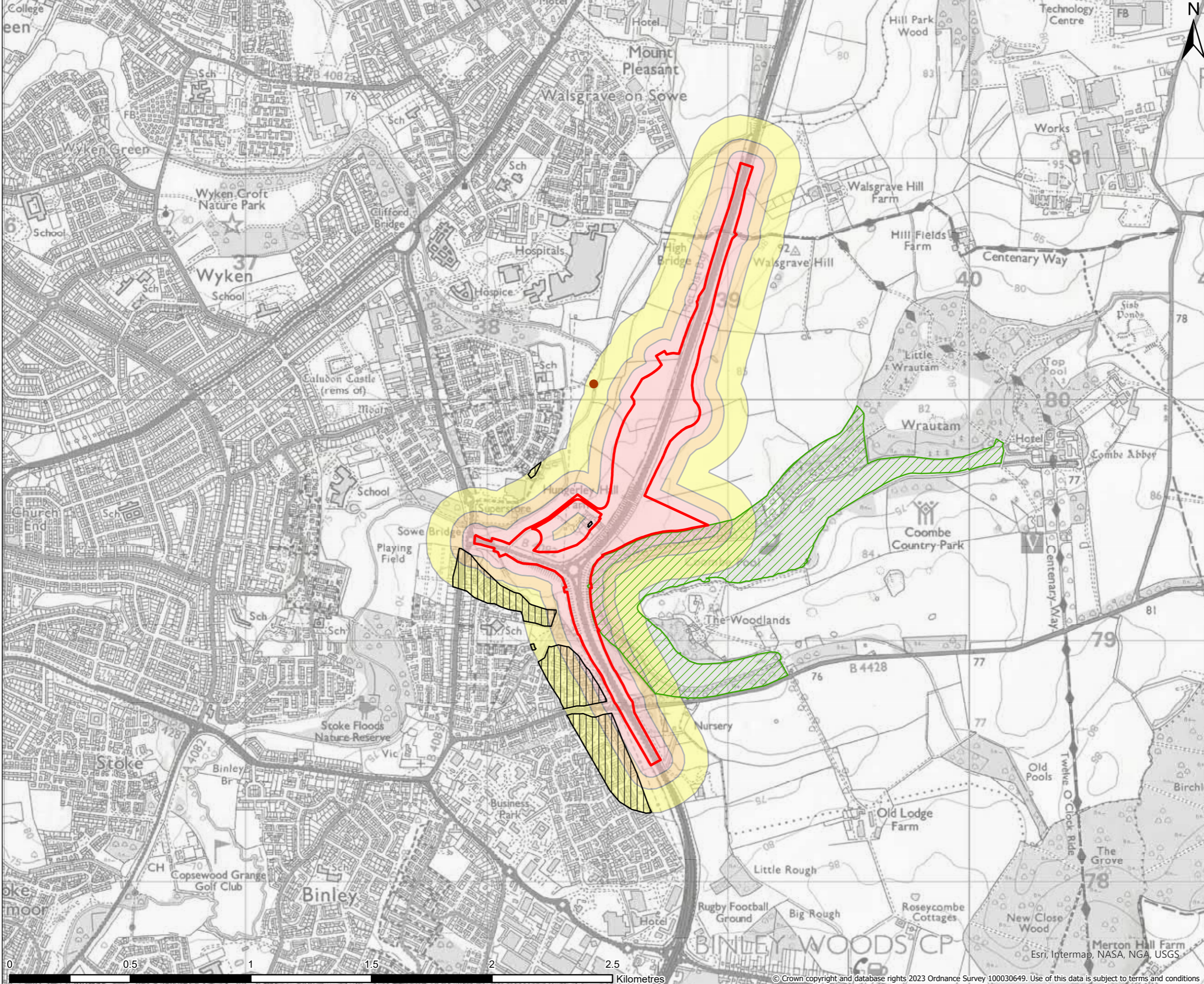
Suitability
FOR INFORMATION

Sheet Size	Scale	Status	Revision
A3	1:15,000	S0	P01

Drawing Number
HE604820-OIL-EAQ-00-DR-LA-30006

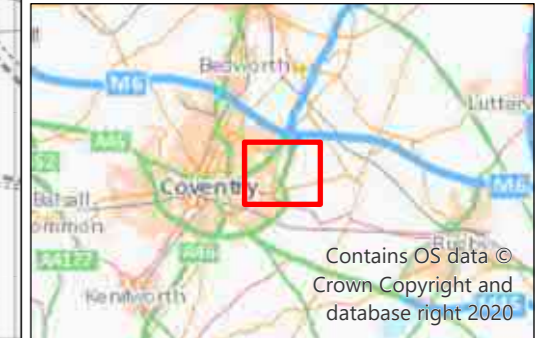


This drawing should not be relied on or used in circumstances other than those for which it was originally prepared and for which Sweco UK Ltd & COWI UK Limited was commissioned. Sweco UK Ltd & COWI UK Limited accepts no responsibility for this drawing to any party other than the person by whom it was commissioned. This drawing has been prepared on behalf of Octavius Infrastructure by Sweco UK Ltd & COWI UK Limited for the titled project or named part thereof and should not be relied upon or used for any other project without an independent check being carried out as to its suitability and prior written authority of Octavius Infrastructure being obtained. Sweco UK Ltd & COWI UK Limited accepts no responsibility or liability for the consequences of this drawing being used for a purpose other than the purposes for which it was commissioned. Any person using or relying on this drawing for such other purpose agrees, and will by such use or reliance be taken to confirm his/her agreement, to indemnify Sweco UK Ltd & COWI UK Limited for all loss or damage resulting therefrom.



Legend

- Draft Order Limits
- Construction Dust Buffers:
 - 50m
 - 100m
 - 200m
- Veteran Tree
- Site of Special Scientific Interest (SSSI) within Construction Dust Buffers
- Existing sensitive residential receptors within Construction Dust Buffers



P02	20.09.2023	FIRST ISSUE	RM	MB	DP
REV	DATE	REVISION NOTE	ORG	CHKD	APP

Designer

COWI SWECO

Contractor

octavius

Client

national highways

Project Title
A46 COVENTRY JUNCTIONS (WALSGRAVE)

Project Stage
FOR STATUTORY CONSULTATION

Drawing Title
FIGURE 5.4 : CONSTRUCTION PHASE SENSITIVE RECEPTORS

Suitability
FOR INFORMATION

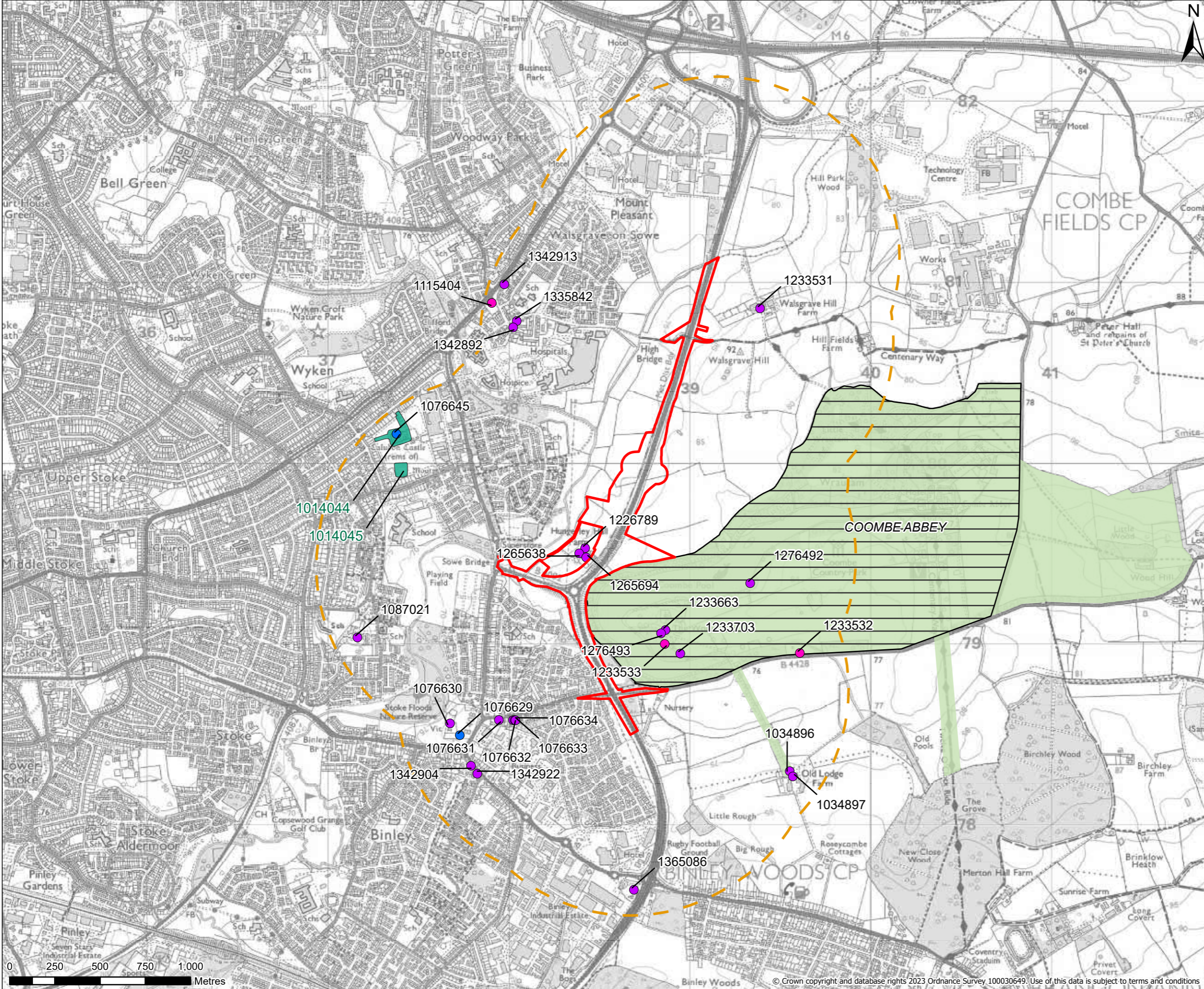
Sheet Size	Scale	Status	Revision
A3	1:15,000	S0	P02

Drawing Number
HE604820-OIL-EAQ-00-DR-LA-30005



© Crown copyright and database rights 2023 Ordnance Survey 100030649. Use of this data is subject to terms and conditions

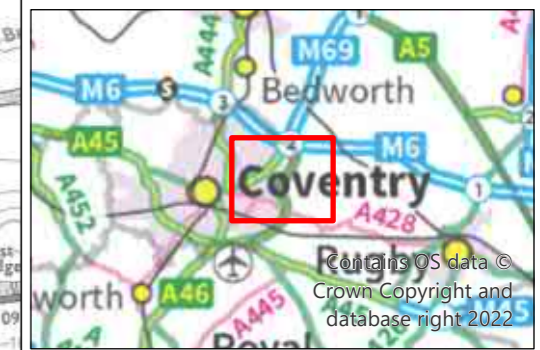
This drawing should not be relied on or used in circumstances other than those for which it was originally prepared and for which Sweco UK Ltd & COWI UK Limited was commissioned. Sweco UK Ltd & COWI UK Limited accepts no responsibility for this drawing to any party other than the person by whom it was commissioned. This drawing has been prepared on behalf of Octavius Infrastructure by Sweco UK Ltd & COWI UK Limited for the titled project or named part thereof and should not be relied upon or used for any other project without an independent check being carried out as to its suitability and prior written authority of Octavius Infrastructure being obtained. Sweco UK Ltd & COWI UK Limited accepts no responsibility or liability for the consequences of this drawing being used for a purpose other than the purposes for which it was commissioned. Any person using or relying on this drawing for such other purpose agrees, and will by such use or reliance be taken to confirm his/her agreement, to indemnify Sweco UK Ltd & COWI UK Limited for all loss or damage resulting therefrom.



- Legend**
- Draft Order Limits
 - Draft Order Limits 1km Buffer
 - Scheduled Monument
 - Coombe Abbey Conservation Area
 - Registered Park and Garden
- Listed Buildings - Grade**
- I
 - II*
 - II

NOTE : All reference numbers referenced as "NHLE" in text

Contains public sector information licensed under the Open Government Licence v3.0.
 Contains, or is based on, information supplied by the Environment Agency.
 Contains, or is based on, information supplied by Natural England.
 © Historic England 2023.
 Contains, or is based on, information supplied by Coventry HER
 Contains, or is based on, information supplied by Warwickshire HER



P03	11.10.2023	FIRST ISSUE	AC	RS	BM
REV	DATE	REVISION NOTE	ORG	CHKD	APP



Project Title
A46 COVENTRY JUNCTIONS (WALSGRAVE)

Project Stage
FOR STATUTORY CONSULTATION

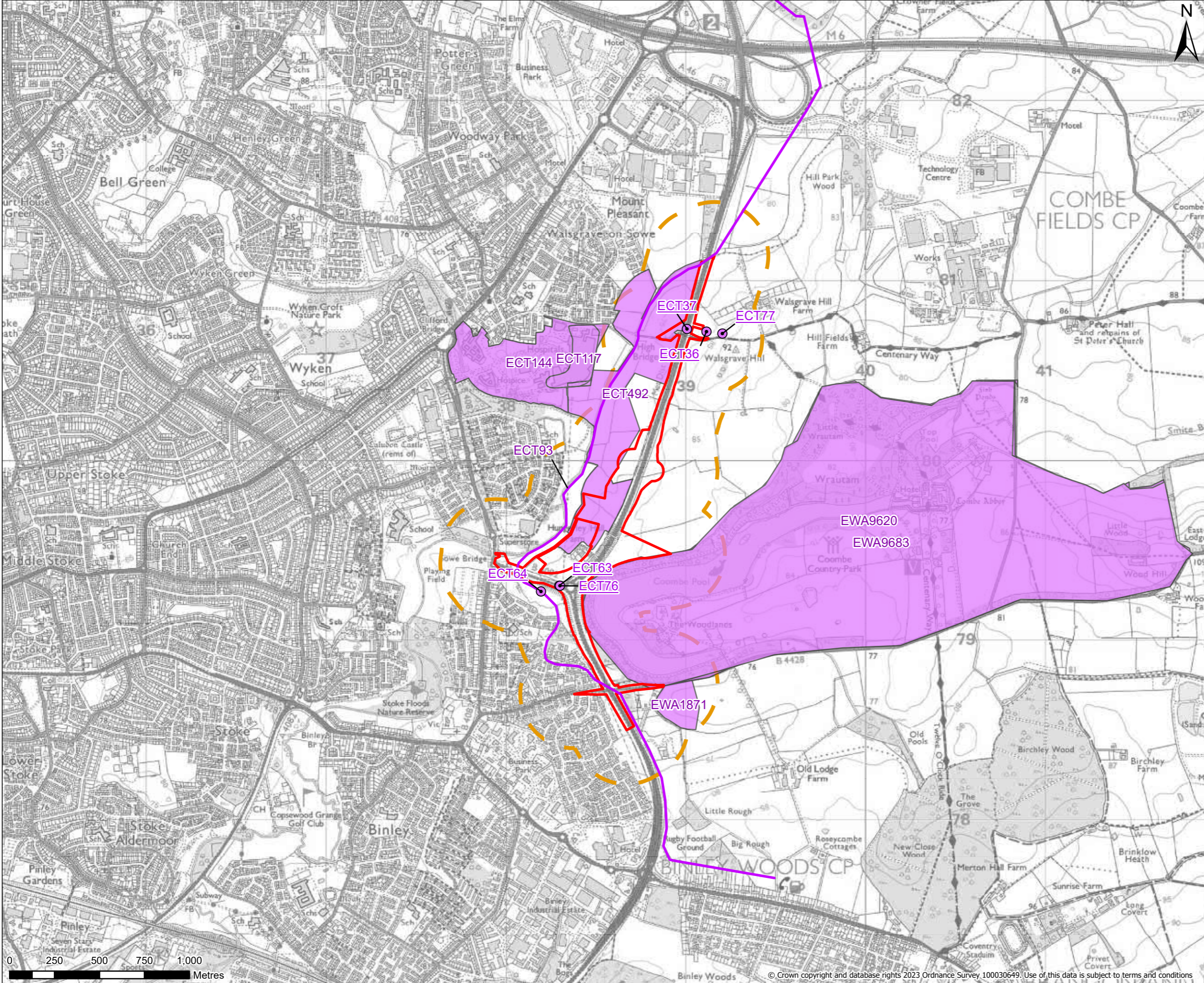
Drawing Title
FIGURE 6.1 : DESIGNATED HERITAGE ASSETS

Suitability
FOR INFORMATION

Sheet Size	Scale	Status	Revision
A3	1:20,000	S0	P03

Drawing Number
 HE604820-OIL-EHR-00-DR-LH-30005

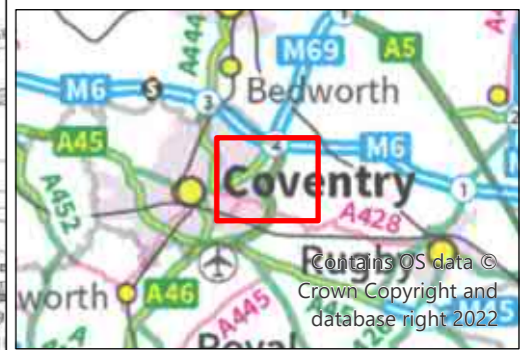
This drawing should not be relied on or used in circumstances other than those for which it was originally prepared and for which Sweco UK Ltd & COWI UK Limited was commissioned. Sweco UK Ltd & COWI UK Limited accepts no responsibility for this drawing to any party other than the person by whom it was commissioned. This drawing has been prepared on behalf of Octavius Infrastructure by Sweco UK Ltd & COWI UK Limited for the titled project or named part thereof and should not be relied upon or used for any other project without an independent check being carried out as to its suitability and prior written authority of Octavius Infrastructure being obtained. Sweco UK Ltd & COWI UK Limited accepts no responsibility or liability for the consequences of this drawing being used for a purpose other than the purposes for which it was commissioned. Any person using or relying on this drawing for such other purpose agrees, and will by such use or reliance be taken to confirm his/her agreement, to indemnify Sweco UK Ltd & COWI UK Limited for all loss or damage resulting therefrom.



Legend

- Draft Order Limits
- Draft Order Limits 300m Buffer
- Events (Point)
- Events (Linear)
- Events (Area)

Contains public sector information licensed under the Open Government Licence v3.0.
 Contains, or is based on, information supplied by the Environment Agency.
 Contains, or is based on, information supplied by Natural England.
 © Historic England 2023.
 Contains, or is based on, information supplied by Coventry HER
 Contains, or is based on, information supplied by Warwickshire HER



P02	21.09.2023	DATA UPDATES	AC	RS	PB
REV	DATE	REVISION NOTE	ORG	CHKD	APP

Designer

Contractor

Client

Project Title
A46 COVENTRY JUNCTIONS (WALSGRAVE)

Project Stage
FOR STATUTORY CONSULTATION

Drawing Title
FIGURE 6.3 : HERITAGE EVENTS (POTENTIAL)

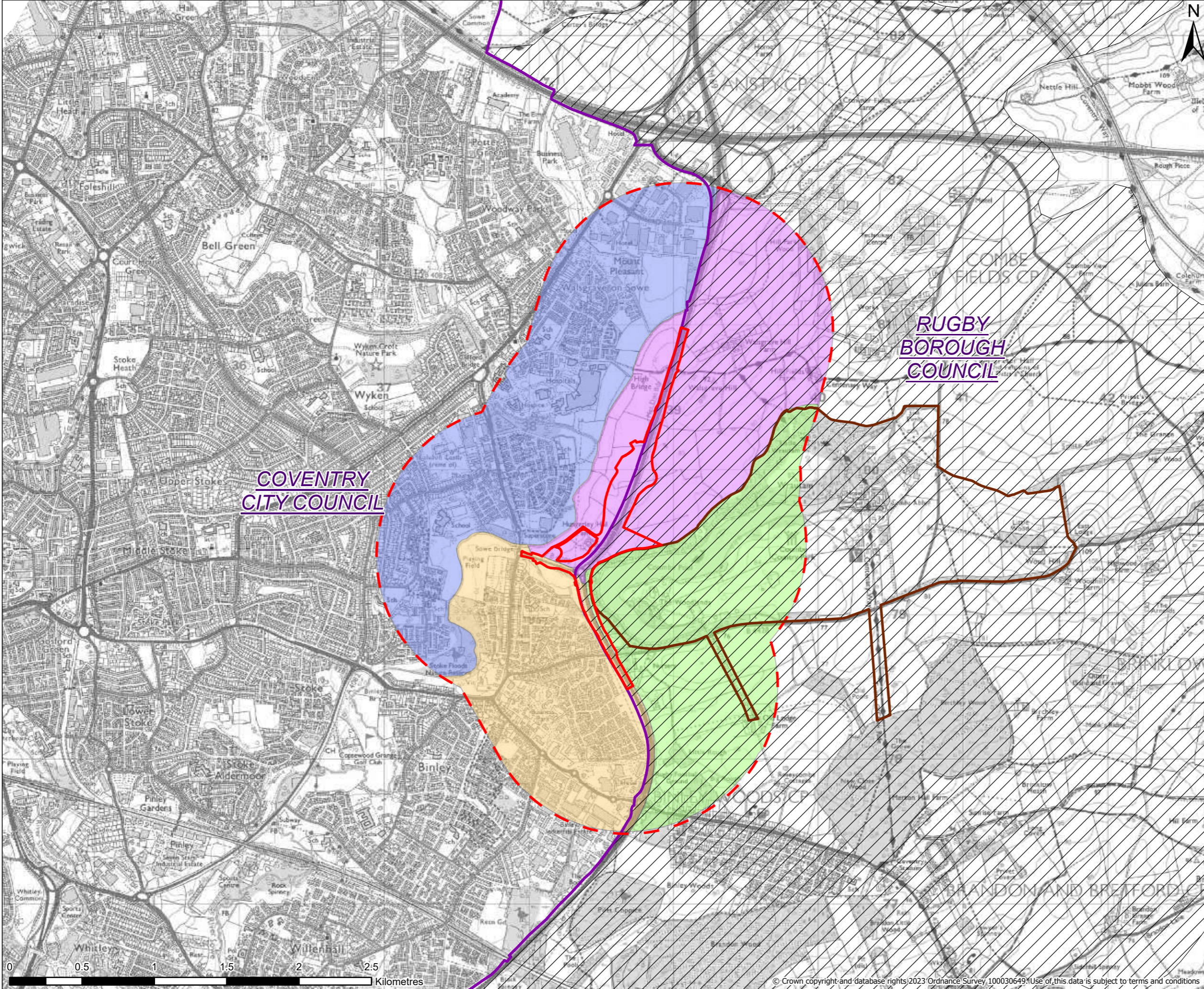
Suitability
FOR INFORMATION

Sheet Size	Scale	Status	Revision
A3	1:20,000	S0	P02

Drawing Number
HE604820-OIL-EHR-00-DR-LH-30007

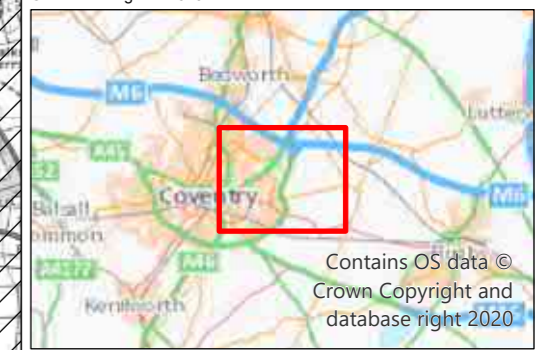


This drawing should not be relied on or used in circumstances other than those for which it was originally prepared and for which Sweco UK Ltd & COWI UK Limited was commissioned. Sweco UK Ltd & COWI UK Limited accepts no responsibility for this drawing to any party other than the person by whom it was commissioned. This drawing has been prepared on behalf of Octavius Infrastructure by Sweco UK Ltd & COWI UK Limited for the titled project or named part thereof and should not be relied upon or used for any other project without an independent check being carried out as to its suitability and prior written authority of Octavius Infrastructure being obtained. Sweco UK Ltd & COWI UK Limited accepts no responsibility or liability for the consequences of this drawing being used for a purpose other than the purposes for which it was commissioned. Any person using or relying on this drawing for such other purpose agrees, and will by such use or reliance be taken to confirm his/her agreement, to indemnify Sweco UK Ltd & COWI UK Limited for all loss or damage resulting therefrom.



- Legend**
- Draft Order Limits
 - Landscape and visual study area (1km radius)
 - Local Authority Boundary
 - Coombe Abbey Grade II* Registered Park and Garden
- Project Character Areas (PCA)**
- PCA 1 - Walsgrave Hill and Valley including Hungerly Hall Farm
 - PCA 2 - Coombe Abbey Park and Old Lodge Farm
 - PCA 3 - Gainford Rise Open Space (Smite Brook) and Binley (Coventry East)
 - PCA 4 - Sowe Valley/ Dorchester Way (Coventry East)
- Local Landscape Character Assessment - Warwickshire County Council**
- Dunsmore Parklands

Contains public sector information licensed under the Open Government Licence v3.0.
© Historic England 2023.



P02	06.09.2023	MINOR UPDATES	RM	LP	CF
REV	DATE	REVISION NOTE	ORG	CHKD	APP

Designer

COWI SWECO

Contractor

octavius

Client

national highways

Project Title

A46 COVENTRY JUNCTIONS (WALSGRAVE)

Project Stage

FOR STATUTORY CONSULTATION

Drawing Title

FIGURE 7.1 : LANDSCAPE CHARACTER CONTEXT

Suitability

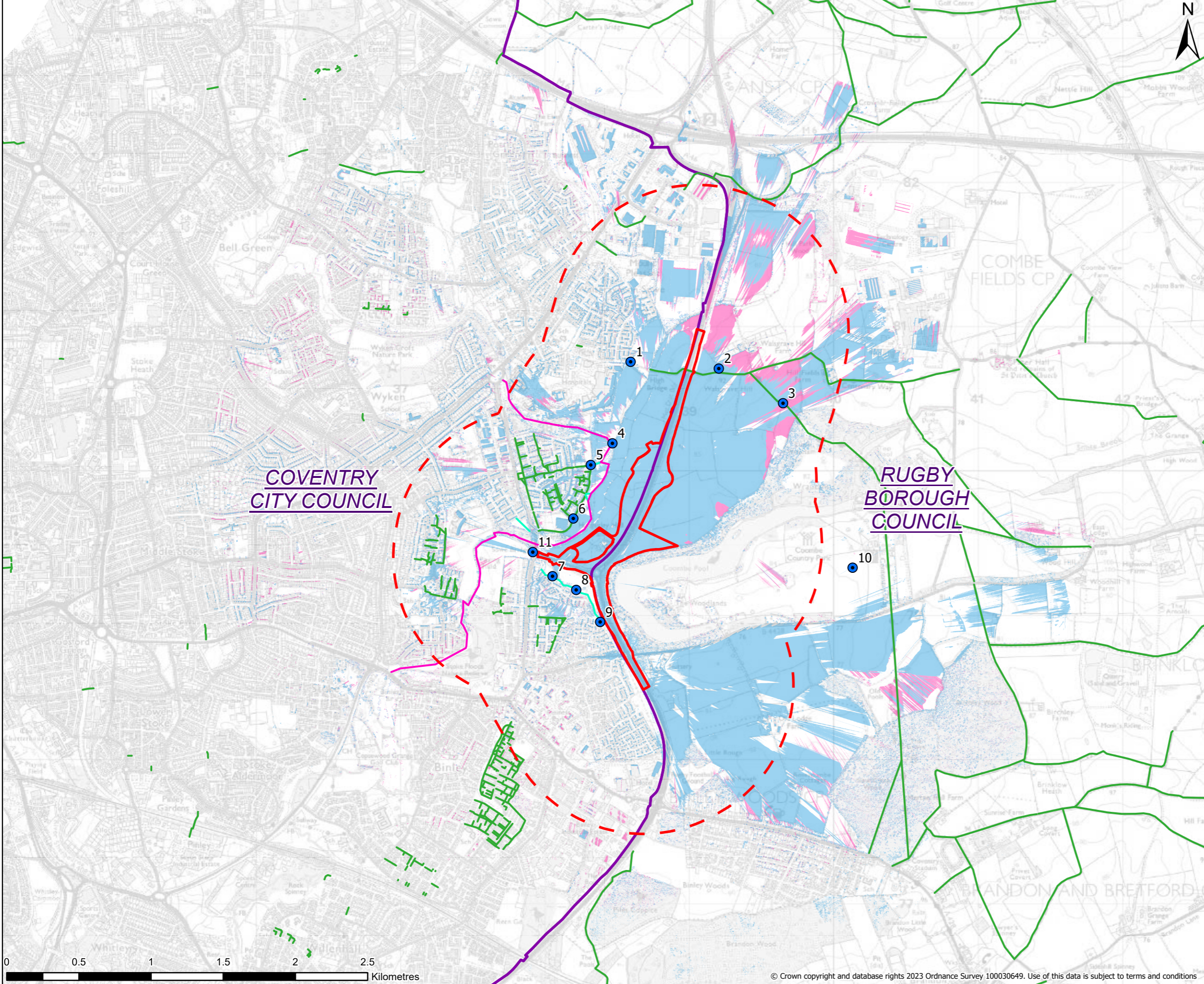
FOR INFORMATION

Sheet Size	Scale	Status	Revision
A3	1:25,000	S0	P02

Drawing Number

HE604820-OIL-ELS-00-DR-LX-30003

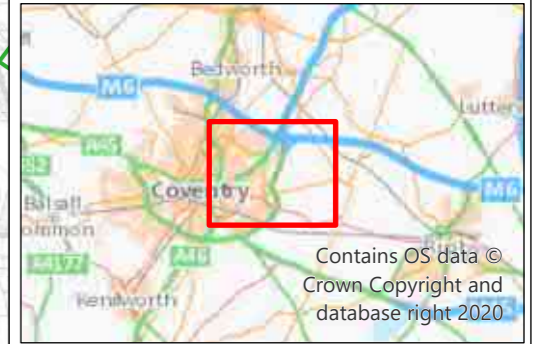
This drawing should not be relied on or used in circumstances other than those for which it was originally prepared and for which Sweco UK Ltd & COWI UK Limited was commissioned. Sweco UK Ltd & COWI UK Limited accepts no responsibility for this drawing to any party other than the person by whom it was commissioned. This drawing has been prepared on behalf of Octavius Infrastructure by Sweco UK Ltd & COWI UK Limited for the titled project or named part thereof and should not be relied upon or used for any other project without an independent check being carried out as to its suitability and prior written authority of Octavius Infrastructure being obtained. Sweco UK Ltd & COWI UK Limited accepts no responsibility or liability for the consequences of this drawing being used for a purpose other than the purposes for which it was commissioned. Any person using or relying on this drawing for such other purpose agrees, and will by such use or reliance be taken to confirm his/her agreement, to indemnify Sweco UK Ltd & COWI UK Limited for all loss or damage resulting therefrom.



- Legend**
- Draft Order Limits
 - Landscape and visual study area (1km radius)
 - Local Authority Boundary
 - Proposed Representative Viewpoint Locations
 - Public Rights of Way (Coventry and Warwickshire)
 - Local Paths
 - Sowe Valley Way
 - Approximate ZTV based on nominal 4m above road level
 - Approximate additional ZTV based on proposed 10m high lamps at roundabouts

*Zones of Theoretical Visibility (ZTVs) have been generated using a 1m resolution Digital Surface Model (DSM) that takes into account the screening effects of vegetation, buildings and other structures. The viewer height for each ZTV has been taken as 1.6m accordance with GLVIA 3 best practice guidance. The proposed road ZTV is based upon points at 4m above the proposed road level at 20m intervals along the road. The proposed light columns ZTV is based on points positioned 10m above the proposed road level around the proposed roundabouts.

Contains public sector information licensed under the Open Government Licence v3.0.
© Historic England 2023.



P02	06.09.2023	MINOR UPDATES	RM	LP	CF
REV	DATE	REVISION NOTE	ORG	CHKD	APP

Designer

Contractor

Client

Project Title
A46 COVENTRY JUNCTIONS (WALSGRAVE)

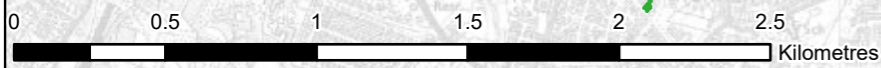
Project Stage
FOR STATUTORY CONSULTATION

Drawing Title
FIGURE 7.2 : VISUAL CONTEXT

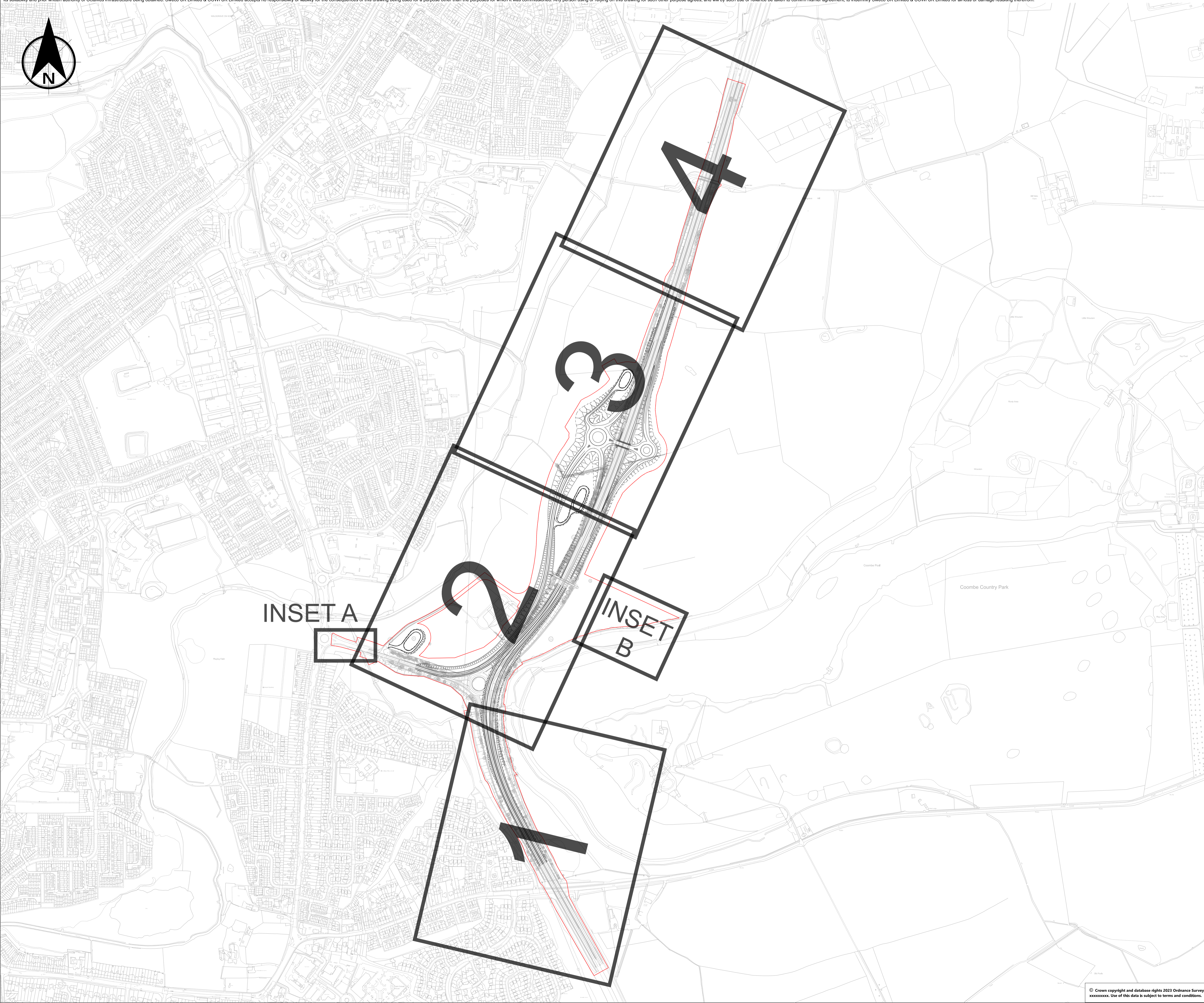
Suitability
FOR INFORMATION

Sheet Size	Scale	Status	Revision
A3	1:25,000	S0	P02

Drawing Number
HE604820-OIL-ELS-00-DR-LX-30004



This drawing should not be relied on or used in circumstances other than those for which it was originally prepared and for which Sweco UK Limited & COWI UK Limited was commissioned. Sweco UK Limited & COWI UK Limited accepts no responsibility for this drawing to any party other than the person by whom it was commissioned. This drawing has been prepared on behalf of Octavius Infrastructure by Sweco UK Limited & COWI UK Limited for the titled project or named part thereof and should not be relied upon or used for any other project without an independent check being carried out as to its suitability and prior written authority of Octavius Infrastructure being obtained. Sweco UK Limited & COWI UK Limited accepts no responsibility or liability for the consequences of this drawing being used for a purpose other than the purposes for which it was commissioned. Any person using or relying on this drawing for such other purpose agrees, and will by such use or reliance be taken to confirm his/her agreement, to indemnify Sweco UK Limited & COWI UK Limited for all loss or damage resulting therefrom.

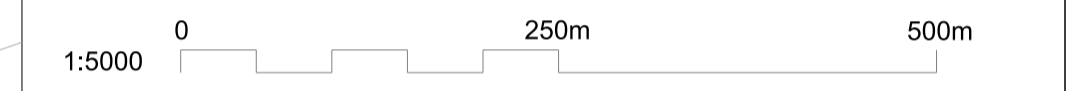


NOTES

1. THIS DRAWING SHALL BE USED FOR THE PURPOSE SHOWN IN THE TITLE BOX ONLY.
2. THIS DRAWING IS TO BE READ IN CONJUNCTION WITH ALL RELEVANT DRAWINGS.
 - INDICATIVE ENVIRONMENTAL MASTERPLAN FOR CONSULTATION OVERVIEW PLAN HE604820-OIL-ELS-00-DR-LE-31000
 - INDICATIVE ENVIRONMENTAL MASTERPLAN FOR CONSULTATION SHEETS 1 TO 4 HE604820-OIL-ELS-00-DR-LE-31001 TO HE604820-OIL-ELS-00-DR-LE-31004
3. FOR LANDSCAPE ELEMENT AND ENVIRONMENTAL ELEMENT CODES REFER TO DMRB LD117 LANDSCAPE DESIGN DOCUMENT.
4. DO NOT SCALE FROM THIS DRAWING.

KEY TO SYMBOLS

DRAFT ORDER LIMITS



REV	DATE	REVISION NOTE	ORG	CHKD	APPD
P01	10/08/23	FOR REVIEW AND COMMENT	LScO	SWel	PBlA
P02	22/09/23	FOR REVIEW AND AUTHORIZATION	ACor	SWel	CF
P03	11/10/23	FOR REVIEW AND AUTHORIZATION	LScO	SWel	CF

DESIGNER

CONTRACTOR

CLIENT

PROJECT TITLE
A46 COVENTRY JUNCTIONS (WALSGRAVE)

PROJECT STAGE
FOR STATUTORY CONSULTATION

DRAWING TITLE
**FIGURE 7.3
 INDICATIVE ENVIRONMENTAL MASTERPLAN
 FOR CONSULTATION - OVERVIEW**

SUITABILITY
FOR REVIEW AND AUTHORIZATION

SHEET SIZE	SCALE	STATUS	REVISION
A1	1:5000	S4	P03

DRAWING NUMBER
HE604820-OIL-ELS-00-DR-LE-31000

© Crown copyright and database rights. 2023 Ordnance Survey xxxxxxxx. Use of this data is subject to terms and conditions.

This drawing should not be relied on or used in circumstances other than those for which it was originally prepared and for which Sweco UK Limited & COWI UK Limited was commissioned. Sweco UK Limited & COWI UK Limited accepts no responsibility for this drawing to any party other than the person by whom it was commissioned. This drawing has been prepared on behalf of Octavius Infrastructure by Sweco UK Limited & COWI UK Limited for the titled project or named part thereof and should not be relied upon or used for any other project without an independent check being carried out as to its suitability and prior written authority of Octavius Infrastructure being obtained. Sweco UK Limited & COWI UK Limited accepts no responsibility or liability for the consequences of this drawing being used for a purpose other than the purposes for which it was commissioned. Any person using or relying on this drawing for such other purpose agrees, and will by such use or reliance be taken to confirm his/her agreement, to indemnify Sweco UK Limited & COWI UK Limited for all loss or damage resulting therefrom.

LEGEND

DRAFT ORDER LIMITS

LANDSCAPE ELEMENTS

- LE1.3.1 SPECIES RICH GRASSLAND (VERGE)
- LE1.3.2 SPECIES RICH GRASSLAND
- LE2.1 WOODLAND
- LE2.6 SHRUBS
- LE2.8 SCRUB
- LE4.3 NATIVE SPECIES HEDGEROW
- LE4.4 NATIVE SPECIES HEDGEROW WITH TREES

ENVIRONMENTAL ELEMENTS

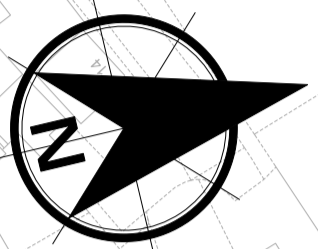
- E2.1 ATTENUATION BASIN REFER TO DRAINAGE DESIGN

OTHER

- EXISTING VEGETATION TO BE RETAINED. (INDICATIVE EXTENTS)
- LANDFORM
- FENCING - REFER TO FENCING DESIGN
- VRS - REFER TO ROAD RESTRAINT SYSTEM DESIGN
- DRAINAGE - REFER TO DRAINAGE DESIGN
- SIGNAGE - REFER TO SIGNAGE DESIGN

ENVIRONMENTAL ELEMENTS

- LE5.1.1 INDIVIDUAL TREE: SMALL SPECIES
- LE5.1.2 INDIVIDUAL TREE: MEDIUM SPECIES
- LE5.1.3 INDIVIDUAL TREE: LARGE SPECIES
- LE6.4 MARSH AND WET GRASSLAND



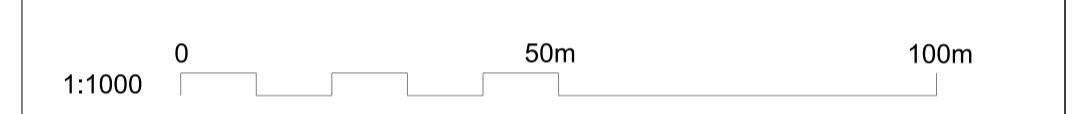
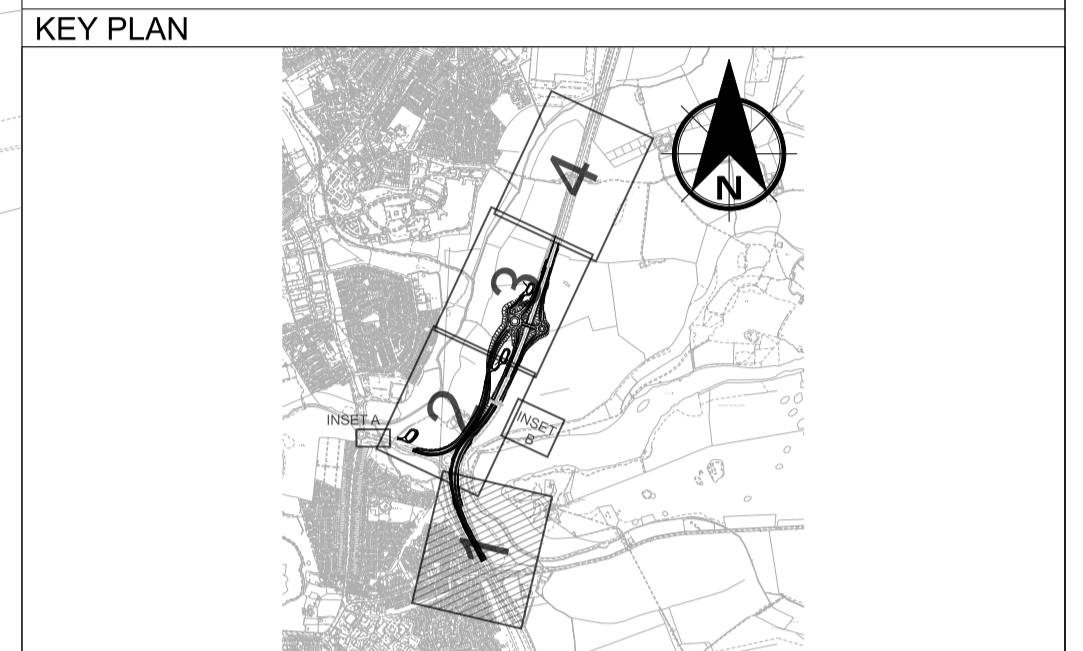
NOTE
WOODLAND PLANTING

- LANDSCAPE INTEGRATION AND REINSTATEMENT OF LANDSCAPE CHARACTER LOST DURING CONSTRUCTION
- VISUAL SCREENING OF THE PROPOSED SCHEME FROM THE ADJACENT RESIDENTIAL AREAS
- OFFSET BIODIVERSITY LOSSES DURING CONSTRUCTION

NOTE
WOODLAND PLANTING

- LANDSCAPE INTEGRATION AND REINSTATEMENT OF LANDSCAPE CHARACTER LOST DURING CONSTRUCTION
- VISUAL SCREENING OF THE PROPOSED SCHEME FROM THE ADJACENT COOMBE PARK REGISTERED PARK AND GARDEN
- OFFSET BIODIVERSITY LOSSES DURING CONSTRUCTION

- NOTES**
- THIS DRAWING SHALL BE USED FOR THE PURPOSE SHOWN IN THE TITLE BOX ONLY.
 - THIS DRAWING IS TO BE READ IN CONJUNCTION WITH ALL RELEVANT DRAWINGS.
 - INDICATIVE ENVIRONMENTAL MASTERPLAN FOR CONSULTATION OVERVIEW PLAN HE604820-OIL-ELS-00-DR-LE-31000
 - INDICATIVE ENVIRONMENTAL MASTERPLAN FOR CONSULTATION SHEETS 1 TO 4 HE604820-OIL-ELS-00-DR-LE-31001 TO HE604820-OIL-ELS-00-DR-LE-31004
 - FOR LANDSCAPE ELEMENT AND ENVIRONMENTAL ELEMENT CODES REFER TO DMRB LD117 LANDSCAPE DESIGN DOCUMENT.
 - DO NOT SCALE FROM THIS DRAWING.



REV	DATE	REVISION NOTE	ORG	CHKD	APPD
P01	10/08/23	FOR REVIEW AND COMMENT	LScO	SWel	SWel
P02	10/08/23	FOR REVIEW AND COMMENT	LScO	SWel	PBIa
P03	22/09/23	FOR REVIEW AND AUTHORIZATION	ACor	SWel	NGan
P04	11/10/23	FOR REVIEW AND AUTHORIZATION	LScO	SWel	CF

DESIGNER

COWI SWECO

CONTRACTOR

octavius

CLIENT

national highways

PROJECT TITLE

A46 COVENTRY JUNCTIONS (WALSGRAVE)

PROJECT STAGE

FOR STATUTORY CONSULTATION

DRAWING TITLE

**FIGURE 7.4
INDICATIVE ENVIRONMENTAL MASTERPLAN
FOR CONSULTATION SHEET 1 OF 4**

SUITABILITY

FOR REVIEW AND AUTHORIZATION

SHEET SIZE	SCALE	STATUS	REVISION
A1	1:1000	S4	P04

DRAWING NUMBER

HE604820-OIL-ELS-00-DR-LE-31001

If you need help accessing this or any other National Highways information, please call **0300 123 5000** and we will help you.



© Crown copyright 2023.

You may re-use this information (not including logos) free of charge in any format or medium, under the terms of the Open Government Licence.

To view this licence:
visit www.nationalarchives.gov.uk/doc/open-government-licence/write-to-the-Information-Policy-Team, The National Archives, Kew, London TW9 4DU, or email psi@nationalarchives.gsi.gov.uk.

Mapping (where present): © Crown copyright and database rights 2023 OS AC0000827444. You are permitted to use this data solely to enable you to respond to, or interact with, the organisation that provided you with the data. You are not permitted to copy, sub-licence, distribute or sell any of this data to third parties in any form.

This document is also available on our website at www.nationalhighways.co.uk

For an accessible version of this publication please call **0300 123 5000** and we will help you.

If you have any enquiries about this publication email info@nationalhighways.co.uk or call **0300 123 5000**.*

Please quote the National Highways publications code PR70/23.
National Highways creative job number CRE23_0461

*Calls to 03 numbers cost no more than a national rate call to an 01 or 02 number and must count towards any inclusive minutes in the same way as 01 and 02 calls. These rules apply to calls from any type of line including mobile, BT, other fixed line or payphone. Calls may be recorded or monitored.

Printed on paper from well-managed forests and other controlled sources when issued directly by National Highways.

Registered office Bridge House, 1 Walnut Tree Close, Guildford GU1 4LZ

National Highways Company Limited registered in England and Wales number 09346363