



A358 Taunton to Southfields Dualling Scheme Statement of Community Consultation (SoCC) Addendum – Supplementary Consultation 2022

1. Introduction

- 1.1 National Highways is proposing to upgrade approximately 8.5 miles (13.6 km) of the A358 between the M5 at Taunton and the Southfields roundabout on the A303 to a high-quality and high-performing dual carriageway. This is a Nationally Significant Infrastructure Project and is therefore progressed under the Planning Act 2008.
- 1.2 We undertook a statutory consultation on our proposed application for the scheme between 12 October 2021 and 22 November 2021. In response to consultation feedback and ongoing development of the project, we have made some modifications to our proposals. We are now undertaking a supplementary consultation to gather feedback on specific elements of these modifications. This supplementary consultation is taking place from 24 May 2022 to 26 June 2022.
- 1.3 These modifications have resulted in some amendments to the scheme boundary. Statutory consultation in accordance with section 42(1)(d) of the Planning Act 2008 will be held with Persons with an Interest in Land (PILs) whose land interests may be affected by the proposed changes.
- 1.4 The supplementary consultation will follow the principles set out in the original [Statement of Community Consultation](#) (SoCC) for the statutory consultation. This document is an addendum to the SoCC, which sets out when consultation will be held, how the local community can take part and how we will gather feedback and use it to influence our proposed preliminary design.

- 1.5 In preparing this document, in line with the development process for the 2021 SoCC, we have consulted with Somerset County Council, Somerset West and Taunton Council and South Somerset District Council and taken their views into account. These are the local authorities in the areas in which the scheme is proposed to be built and/or the scheme may significantly impact.

2. Consulting the community

2.1 We carried out a statutory public consultation in October and November 2021, where we sought feedback on our preliminary design for the preferred route. We consulted on all aspects of the preliminary design, with a focus on the following elements:

- Upgrades to the M5 junction 25 and the Nexus roundabout.
- A new two-lane bridge to carry Stoke Road over the A358.
- A new junction at Mattock's Tree Green.
- A new connection to provide access for the Somerset Progressive School, the Huish Woods Scout Campsite and local businesses at Nightingale Farm Units.
- A new connection linking Village Road to the Mattock's Tree Green junction to provide access to Hatch Beauchamp for residents and local businesses.
- An additional bridge at Griffin Lane to carry the eastbound A358 carriageway.
- A new two-lane bridge to carry Bickenhall Lane over the A358.
- A new two-lane bridge to carry Village Road over the A358.
- options to provide a connection, or not, between local villages at Capland.
- A new junction at Ashill.
- A new connection on the eastern side of the A358 to connect Stewley with the Ashill junction.
- A new parallel road on the western side of the A358 to connect Broadway Street and Thickthorn Lane.
- Southfields roundabout connection and improvements.
- Proposals for walkers, cyclists, horse-riders and disabled users, including a new cycle route that would run from Henlade to the Southfields roundabout making use of the local road network and new off-road routes.
- Proposals for construction phasing.
- The information and proposed mitigation presented in the Preliminary Environmental Information (PEI) Report.

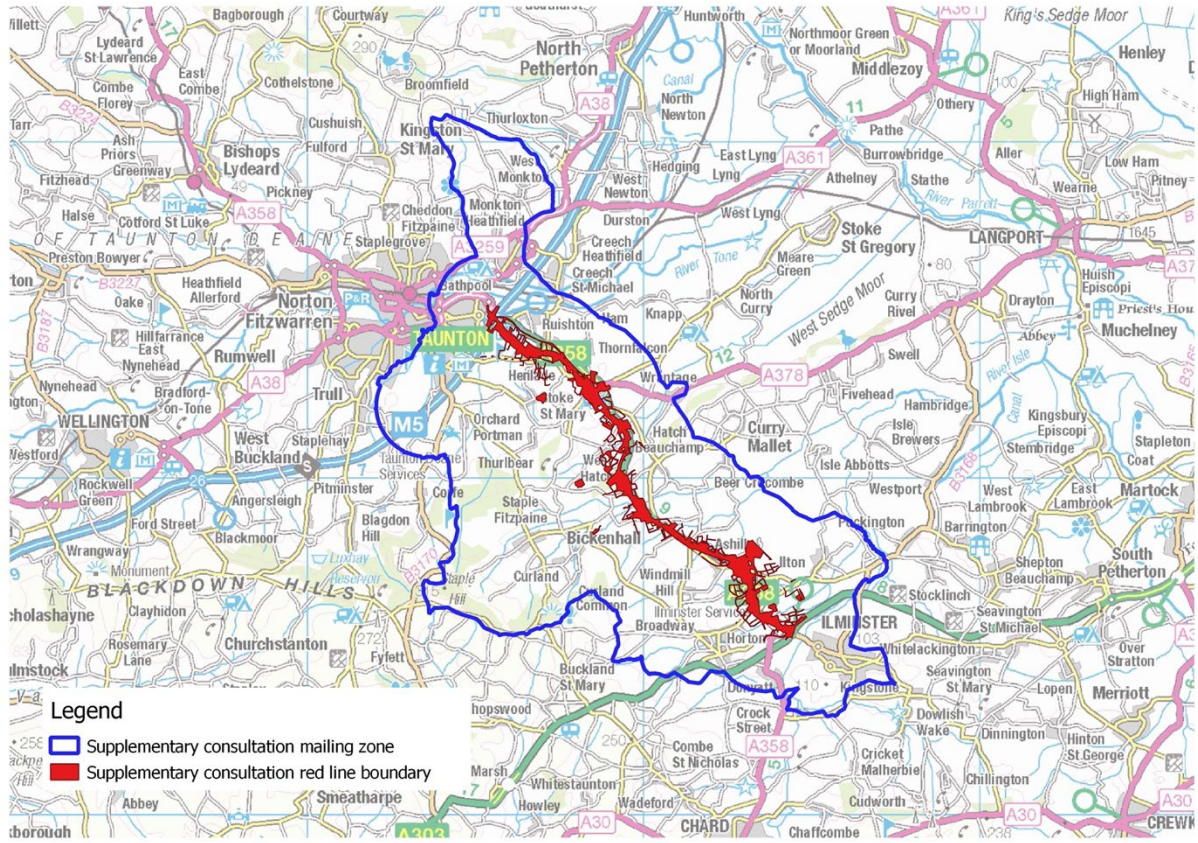
2.2 A summary of feedback from the 2021 statutory public consultation and how this has influenced proposed modifications to date will be published as part of the suite of materials for this supplementary consultation, as outlined in this document.

2.3 The 2021 SoCC and further details of previous consultations are available to view at: www.nationalhighways.co.uk/a358-taunton-to-southfields.

3. Who we are consulting with

- 3.1 The supplementary consultation will run from Tuesday 24 May to Sunday 26 June 2022, at 23:59.
- 3.2 The changes to the proposals since the statutory consultation sit in the following broad categories:
- Modifications to our proposals for the way in which customers access the A358 and local roads relating to transport, traffic flows and safety.
 - Changes to our proposals for walking, cycling, horse-riding and disabled-user access.
 - Changes to the environmental mitigation proposed as part of the scheme.
 - Change to the location of the main construction compound.
 - Minor modifications which address feedback from landholders and further consideration to how we would construct the project.
- 3.3 These modifications have resulted in some amendments to the scheme boundary. Statutory consultation in accordance with section 42(1)(d) of the Planning Act 2008 will be held with Persons with an Interest in Land (PILs) whose land interests may be affected by the proposed changes.
- 3.4 A single supplementary consultation process will be carried out on these changes in order to ensure a consistent approach and reduce the number of individual consultations that respondents would need to participate in.
- 3.5 For the supplementary consultation, we have used the same rationale for the consultation mailing zone as was outlined in the 2021 SoCC. This has been agreed with Somerset County Council, South Somerset District Council and Somerset West and Taunton Council.
- 3.6 The consultation mailing zone is defined by:
- all addresses within a 1.5km (0.9 mile) radius of the extent of preliminary design (the red line boundary)
 - all addresses that fall within the host civil parishes for the scheme – those whose boundaries are within the red line boundary
 - where there is no host civil parish, all addresses in the equivalent district council ward
- 3.7 The consultation mailing zone is shown in Figure 1. Host parish council and district council boundaries in relation to the mailing zone are shown in Appendix B.

Figure 1: Consultation mailing zone



The consultation mailing zone above is for illustrative purposes only. Exact limits of the zone to be refined in accordance with parish, village and road boundaries.

4. Who can take part

- 4.1 Anyone who is interested in this scheme is welcome to take part. We welcome all views and will take them into account. Your feedback will help us to shape our proposals before we submit our application for a Development Consent Order.

5. How will we consult?

5.1 Details of how we will formally consult with stakeholders, landholders and the local community as part of the supplementary consultation are included in Table 1 below.

Table 1: Consultation activities

| Method | Detail |
|------------------------------|---|
| Raising awareness | |
| Postcard mailings | <p>In advance of the supplementary consultation, we will send a postcard to all residential and business addresses within the consultation mailing zone outlined in Figure 1. The postcard will include:</p> <ul style="list-style-type: none"> • a link to the scheme webpage • details of the consultation events • information on how to pre-register for paper copies of consultation materials (see Table 2 for details of which documents will be available free of charge) <p>A similar email will be sent to users who have registered for updates via the scheme’s webpage and to 2021 public consultation respondents who expressed an interest to stay in touch via email.</p> <p>A second postcard will be sent and emails issued at the start of the consultation period to advise that the consultation is live.</p> |
| Stakeholder briefings | <p>As part of the consultation, we will offer to brief the following stakeholders about the supplementary consultation and how people can get involved:</p> <ul style="list-style-type: none"> • Elected representatives including the host Members of Parliament (MPs), local authority members and parish councils. • Members of the A358 Community forum, the Walking, cycling and horse-riding forum and the Business forum. • Those with an interest in the land that we anticipate we will need to build the scheme or within the draft boundary of the scheme. |

| | |
|---|---|
| Hard-to-reach groups update | We will contact organisations on our hard-to-reach groups list (see Appendix A) by email or phone in advance of the consultation to raise awareness of the consultation activities. We will then email these organisations at the start of the consultation to advise that the consultation is live. |
| Making information available | |
| Virtual exhibition | At the start of the consultation period, we will launch an online virtual exhibition room. This tool will allow users to virtually move around a 360-degree replica of an event and interact with materials, including display banners, video and technical documents. A link to the online feedback questionnaire will be provided within the virtual exhibition room. The virtual exhibition room will be open 24/7 during the consultation period. |
| Dedicated consultation webpage | All consultation documents and the online feedback questionnaire will be made available on our dedicated webpage. The webpage will be made available on the first day of the consultation period. The webpage will be accessible via the scheme webpage at: www.nationalhighways.co.uk/a358-taunton-to-southfields . |
| Question & Answer webinars | <p>We will hold a series of question and answer (Q&A) webinar sessions where specialists from the project team will present the changes to the preliminary design and answer questions.</p> <p>The dates and times for the sessions are as follows:</p> <p>Webinar 1 – Wednesday 25 May – 12:30pm Webinar 2 – Tuesday 7 June – 12:30pm Webinar 3 – Thursday 9 June – 7:00pm Webinar 4 – Tuesday 14 June – 7:00pm</p> <p>The sessions will be advertised on the project webpage, in consultation publicity materials and promoted via press and social media.</p> <p>Comments made via the Q&A webinars will not be considered as formal responses to the consultation. This will be made clear as part of the presentation at each webinar and people will be directed towards the feedback channels listed in section 6 of this SoCC.</p> |
| Consultation events (face-to-face) | <p>We will hold face-to-face consultation events to supplement the virtual exhibition room. These will take place in line with government guidelines in place at the time.</p> <p>The dates, times and venues for the events are as follows:</p> |

| | |
|-----------------------------|--|
| | <ul style="list-style-type: none"> • Monks Yard (Conference Room), Horton Cross Farm, Horton Cross, Ilminster, Somerset, TA19 9PT Thursday 26 May from 11.00am to 8.00pm • Somerset County Cricket Club, The Cooper Associates County Ground, St. James Street, Taunton, Somerset, TA1 1JT Wednesday 8 June from 11.00am to 8.00pm • Taunton Racecourse, Orchard Portman, Taunton, Somerset, TA3 7BL Saturday 11 June from 11.00am to 6.00pm <p>Printed copies of the consultation materials will be made available at consultation events for attendees to review. Attendees will be able to take away a copy of the <i>Consultation booklet, Feedback questionnaire and Responding to feedback from 2021 public consultation booklet</i>. Attendees will also be able to submit their hard copy questionnaire at the events.</p> |
| Video/telephone call | Members of the public will be able to request a call back from a member of the project team (subject to availability) by calling our customer contact centre on 0300 123 5000 (lines are open 24 hours a day) or by emailing A358TauntontoSouthfields@nationalhighways.co.uk |
| Publicity | |
| Method | Detail |
| Press releases | <p>Press releases publicising the upcoming consultation and how the community and road users can get involved will be issued to the following key outlets:</p> <ul style="list-style-type: none"> • Somerset County Gazette • Somerset Live • Chard and Ilminster News • The Western Gazette • BBC Radio Somerset • ITV News West Country • BBC Points West and Spotlight |
| Email and letters | <p>At the start of the consultation period, we will send either emails or letters about the consultation and how to get involved to:</p> <ul style="list-style-type: none"> • host constituency and neighbouring constituency area MPs • elected representatives at Somerset County Council, South Somerset District Council and Somerset West and Taunton Council • host parish councils • local authorities and parish councils adjacent to host local authorities and parish councils |

| | |
|----------------------|--|
| Public notice | <p>Public notices to publicise the supplementary consultation will be published twice in locally circulating newspapers.</p> <p>Public notices will also be placed in at least ten publicly accessible locations along the proposed route of the scheme.</p> |
| Social media | <p>We will promote the consultation on National Highways' South West Twitter and Facebook accounts, @HighwaysSWEST. Consultation feedback will not be accepted through social media channels and people will be directed towards the official channels for feedback.</p> |

- 5.2 Any activity(ies) that cannot be undertaken due to circumstances beyond our control, for example owing to the COVID-19 pandemic, where possible will be substituted with similar activity(ies) and advertised in local newspapers (via press release) circulating in the vicinity of the scheme. Any activity changes will also be published on National Highways' South West Twitter and Facebook accounts, @HighwaysSWEST.

6. How to respond to consultation

- 6.1 A *Feedback questionnaire* will be produced to help people provide comments on the scheme design. The questionnaire can be completed online via the scheme's webpage: www.nationalhighways.co.uk/a358-taunton-to-southfields.
- 6.2 Hard copy *Feedback questionnaires* can be collected at one of the designated information points, at the in-person events or requested by:
- calling us on 0300 123 5000
 - emailing us at A358TauntontoSouthfields@nationalhighways.co.uk
 - The questionnaire can be returned free of charge using the freepost response address: FREEPOST A358 TAUNTON TO SOUTHFIELDS (the address must be written in capital letters and you do not need a stamp).
 - Alternatively, feedback can be provided by email: A358TauntontoSouthfields@nationalhighways.co.uk
- 6.3 All responses must be received by **Sunday 26 June at 23:59**. Responses received after that date may not be considered.

7. Information available at and details of local display/deposit locations

7.1 We will make the following documents available as part of the consultation:

Table 2: Consultation documents

| Document | Detail |
|--|--|
| Consultation booklet | <p>Written in plain English, this document will provide a summary of the proposals including:</p> <ul style="list-style-type: none"> • a description of the proposed development • information about design modifications since the statutory consultation • information about the potential benefits, effects and impacts of the proposed design modifications and how we propose to mitigate any potential impacts • signposts for readers to more detailed information reports and how to provide feedback on the proposed scheme <p>This document will be available online and in hard copy at the designated public information points or on request.</p> |
| Summary of changes booklet | <p>This document will outline all changes made since the 2021 public consultation.</p> |
| Responding to feedback from our 2021 consultation | <p>This document will provide a summary of the feedback from the 2021 statutory consultation and how that feedback has influenced proposals at this stage.</p> |
| Feedback questionnaire | <p>The <i>Feedback questionnaire</i> will be available for consultees to provide their feedback on specific aspects of the development. It will be available online, and in hard copy at the designated public information points or on request.</p> |
| Traffic and Environment notes | <p>We will update the <i>Traffic technical note</i> which formed part of the statutory consultation so that it covers the changes. We will also publish an <i>Environment note</i> which will identify the potential environmental impacts of the changes proposed. This will be a supplement to the PEI Report published as part of the 2021 statutory consultation.</p> |
| A set of plans of the scheme | <p>We will publish updated plans, which will provide details of the designs for the scheme, including a plan showing the proposed route of the application. The list of plans include:</p> |

| | |
|--|---|
| | <ul style="list-style-type: none"> walking, cycling and horse-riding, including disabled users, strategy drawings general arrangement plans profile and profile drawings |
| Map of the route | This will highlight where the proposed route is located. |
| Statement of Community Consultation (SoCC) addendum | This SoCC addendum document will be made available as part of the consultation. |

7.2 We will make these consultation documents available to view in the following ways:

Table 3: Methods to make consultation documents available

| Method | Detail |
|----------------------------------|---|
| Project webpage | All consultation documents will be available via the project's webpage which can be found at: www.nationalhighways.co.uk/a358-taunton-to-southfields . |
| Public information points | <p>The following documents will be available to pick up at public information points:</p> <ul style="list-style-type: none"> <i>Consultation booklets</i> <i>Feedback questionnaires</i> <i>Responding to feedback from 2021 public consultation booklets</i> <p>The public information point locations are as follows:</p> <ul style="list-style-type: none"> Taunton Library, Paul Street, Taunton TA1 3XZ South Petherton Library, 3 St James's Street, South Petherton TA13 5BS Martock Library, North Street, Martock TA12 6DL Priorswood Library, Hillside Children's Centre, Eastwick Rd, Taunton TA2 7HD Iminster Library, Ditton Street, Iminster TA19 0BW (hard copy of the technical notes, set of plans and <i>Summary of changes booklet</i> will also be available for inspection at this location) Chard Library, Holyrood Street, Chard TA20 2YA Somerset County Council mobile library Iminster Meeting House & Arts Centre, 35 East Street, Iminster TA19 0AN Henlade Post Office, Henlade, Taunton TA3 5DH |

| | |
|--------------------------------------|---|
| | <ul style="list-style-type: none"> • Blackbrook Leisure Centre & Spa, Blackbrook Way, Taunton TA1 2RW • Somerset West and Taunton Council, Deane House, Belvedere Road, Taunton, Somerset TA1 1HE (hard copy of the technical notes, set of plans and <i>Summary changes booklet</i> will also be available for inspection at this location) <p>These documents will also be sent to host parish councils (where agreed).</p> <p>We will check, by telephone and/or in-person, on a weekly basis that consultation documentation remains at the public information points throughout the consultation period.</p> |
| <p>Requests for documents</p> | <p>As outlined in Table 1, prior to the launch of consultation people will be able to pre-register to receive hard copies of documents on the launch of consultation. Paper copies of the <i>Consultation booklet</i>, <i>Feedback questionnaire</i>, <i>Responding to feedback from the 2021 public consultation booklet</i>, and this <i>SoCC addendum</i> will be supplied free of charge; however, there may be a charge of up to £200 for paper copies of other consultation materials.</p> |

8. Next steps

- 8.1 We will record and carefully consider all responses received during the consultation. Responses will be taken into account in finalising our application before we submit it to the Planning Inspectorate.
- 8.2 We will summarise our findings in a Consultation Report which will include a description of how our application was informed by the responses received and outline any changes made as a result of consultation. The Consultation Report forms part of our submission to the Planning Inspectorate.
- 8.3 The Planning Inspectorate will decide whether the application meets the required standards to proceed to examination and will determine whether our consultation has been adequate.
- 8.4 For more information visit our scheme webpage: www.nationalhighways.co.uk/a358-taunton-to-southfields, where you can also sign up for email alerts whenever the webpage is updated. If you have any queries about this scheme, please contact the project team directly by calling 0300 123 5000 or emailing A358TauntontoSouthfields@nationalhighways.co.uk

Your data, your rights

- 8.5 On 25 May 2018, the General Data Protection Regulations (GDPR) became law. The law requires National Highways to explain to you – consultees, stakeholders and customers – how your personal data will be used and stored. National Highways adheres to the government’s consultation principles and the Planning Act 2008 as required and may collect personal data to help shape development of highways schemes. Personal data collected by the project team will be processed and retained by National Highways and its appointed contractors until the scheme is complete. Under the GDPR regulations you have the following rights:
 - Right of access to the data (Subject Access Request)
 - Right for the rectification of errors
 - Right to erasure of personal data – this is not an absolute right under the legislation
 - Right to restrict processing or to object to processing
 - Right to data portability
- 8.6 If, at any point, National Highways plans to process the personal data we hold for a purpose other than that for which it was originally collected, we will tell you what that other purpose is. We will do this prior to any further processing taking place and we will include any relevant additional information, including your right to object to that further processing.

- 8.7 You have the right to lodge a complaint with the supervisory authority, the Information Commissioners Office.
- 8.8 If you would like more information about how we manage data, or a copy of our privacy notice, please contact:
DataProtectionAdvice@nationalhighways.co.uk.

Appendix A: Hard-to-reach groups

Economically challenged and socially deprived communities

ARC
Charis Refugees
Community Council for Somerset
Samaritans of Taunton and Somerset
Somerset Association of Trade Councils
Spark Somerset
Taunton Open Door
The Gooch Charitable Trust
Unite the Union - Taunton Office

Youth groups

Girl Guiding Somerset County
HQ Somerset Army Cadets
Scouting Somerset County
Somerset UK Youth Parliament
Young Farmers Association (Somerset)
Young Somerset (was Somerset Rural Youth Project)
YMCA Taunton

Elderly groups

Age UK – Somerset
Kinship Care Support Group Taunton
Somerset Social Group
Taunton U3A
UK Pensioners Forum

Time constrained, working parents

Kinship Support Group Somerset

LGBTQ+ Groups

2BU Somerset
Families and Friends of Lesbians and Gay Men (FFLAG)
GMG Southwest
Somerset Lesbian Network
Taunton Gay Group

People with disabilities

Compass Disability Services
Discovery UK
ESCAPE Support Group
Learning disability forum in Somerset
Somerset Carers Service
Somerset Disability Engagement Services
Somerset Dyslexia Association
Somerset SENDIAS Somerset Sight
Taunton & Bridgwater Deaf Group
Taunton & District Mencap Society Taunton Autism Support Group

Taunton Opportunity Group

BAME Groups

Diversity Voice

Somerset Diverse Communities (Part of Community Council for Somerset)

Holiday homeowners, tourists, visitors and travellers groups

Taunton Visitor Centre

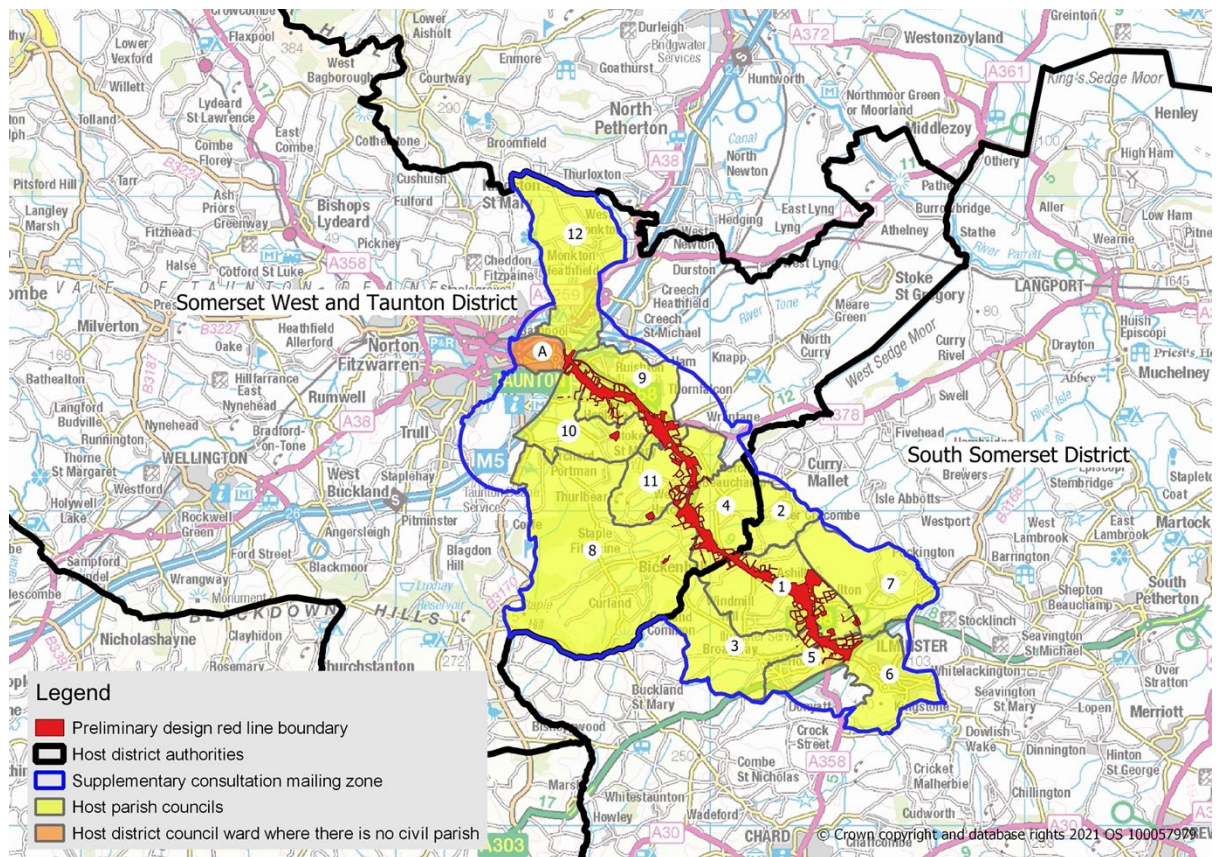
Visit Somerset

Gypsy/Traveller Groups

Friends, Families and Travellers

Somerset Gypsy and Traveller Forum

Appendix B: Host parish council and district council boundaries in relation to consultation mailing zone



Host Parish Councils

- 1) Ashill Parish Council
- 2) Beercrocombe Parish Council
- 3) Broadway Parish Council
- 4) Hatch Beachamp Parish Council
- 5) Horton Parish Council
- 6) Ilminster Town Council
- 7) Ilton Parish Council
- 8) Neroche Parish Council (note: Bickenhall is the host civil parish but as it is part of a grouped council, Neroche Parish Council, the entire boundaries of this council has been included)
- 9) Ruishton, Thornfalcon & Henlade Parish Council
- 10) Stoke St Mary Parish Council
- 11) West Hatch Parish Council
- 12) West Monkton Parish Council

Host District Council ward where there is no civil parish

- A) Halcon & Lane ward