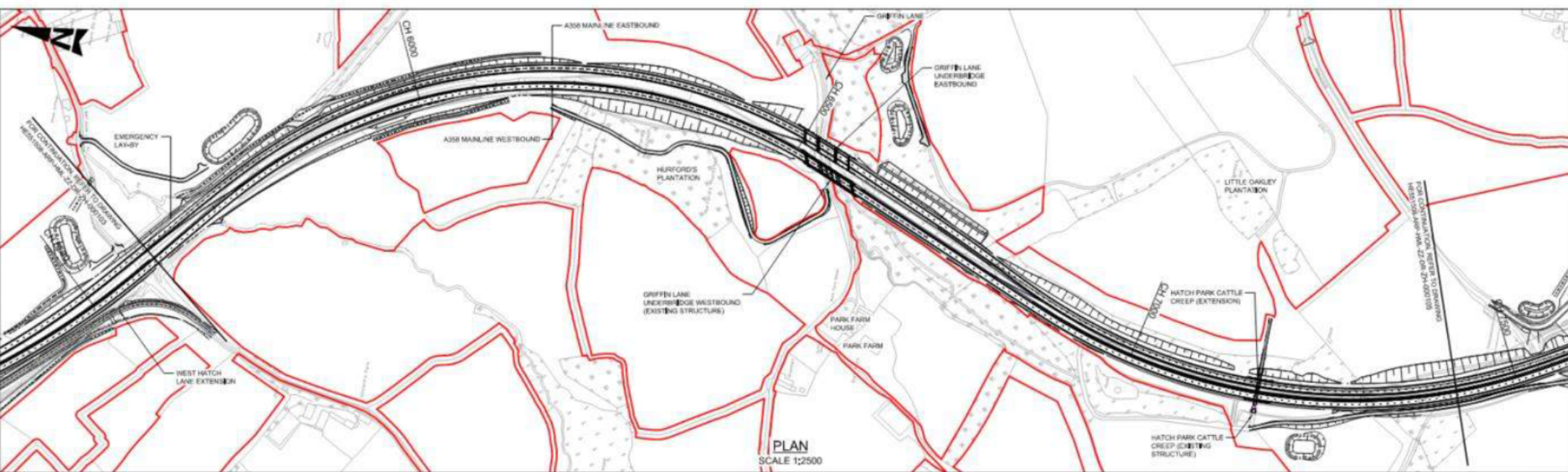


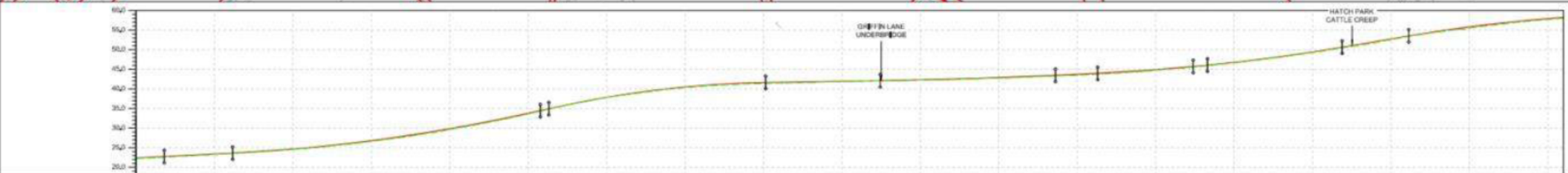
Appendix 7.24d

Plan and profile drawings

DO NOT SCALE



PLAN
SCALE 1:2500



CHAINAGE	EXISTING LEVEL	PROPOSED LEVEL	HORIZONTAL GEOMETRY	VERTICAL GEOMETRY	SUPERELEVATION
5900.000	22.240	22.430	L=280.00m	L=100.25m G=2.0%	R=2.0%
5920.000	22.605	22.815	L=137.023m	L=107.085m G=0.9%	R=2.0%
5940.000	22.965	23.175	L=196.194m	L=166.256m K=110	R=2.0%
5960.000	23.325	23.515		L=271.263m K=65	R=2.0%
5980.000	23.685	23.875		L=146.228m G=3.0%	R=2.0%
6000.000	24.045	24.235		L=223.429m K=350	R=2.0%
6020.000	24.405	24.595		L=51.522m G=0.8%	R=2.0%
6040.000	24.765	24.955		L=121.267m K=120	R=2.0%
6060.000	25.125	25.315		L=171.573m K=120	R=2.0%
6080.000	25.485	25.675		L=84.005m G=1.3%	R=2.0%
6100.000	25.845	26.035		L=179.967m K=100	R=2.0%
6120.000	26.205	26.395			R=2.0%
6140.000	26.565	26.755			R=2.0%
6160.000	26.925	27.115			R=2.0%
6180.000	27.285	27.475			R=2.0%
6200.000	27.645	27.835			R=2.0%
6220.000	28.005	28.195			R=2.0%
6240.000	28.365	28.555			R=2.0%
6260.000	28.725	28.915			R=2.0%
6280.000	29.085	29.275			R=2.0%
6300.000	29.445	29.635			R=2.0%
6320.000	29.805	30.000			R=2.0%
6340.000	30.165	30.360			R=2.0%
6360.000	30.525	30.720			R=2.0%
6380.000	30.885	31.080			R=2.0%
6400.000	31.245	31.440			R=2.0%
6420.000	31.605	31.800			R=2.0%
6440.000	31.965	32.160			R=2.0%
6460.000	32.325	32.520			R=2.0%
6480.000	32.685	32.880			R=2.0%
6500.000	33.045	33.240			R=2.0%
6520.000	33.405	33.600			R=2.0%
6540.000	33.765	33.960			R=2.0%
6560.000	34.125	34.320			R=2.0%
6580.000	34.485	34.680			R=2.0%
6600.000	34.845	35.040			R=2.0%
6620.000	35.205	35.400			R=2.0%
6640.000	35.565	35.760			R=2.0%
6660.000	35.925	36.120			R=2.0%
6680.000	36.285	36.480			R=2.0%
6700.000	36.645	36.840			R=2.0%
6720.000	37.005	37.200			R=2.0%
6740.000	37.365	37.560			R=2.0%
6760.000	37.725	37.920			R=2.0%
6780.000	38.085	38.280			R=2.0%
6800.000	38.445	38.640			R=2.0%
6820.000	38.805	39.000			R=2.0%
6840.000	39.165	39.360			R=2.0%
6860.000	39.525	39.720			R=2.0%
6880.000	39.885	40.080			R=2.0%
6900.000	40.245	40.440			R=2.0%
6920.000	40.605	40.800			R=2.0%
6940.000	40.965	41.160			R=2.0%
6960.000	41.325	41.520			R=2.0%
6980.000	41.685	41.880			R=2.0%
7000.000	42.045	42.240			R=2.0%
7020.000	42.405	42.600			R=2.0%
7040.000	42.765	42.960			R=2.0%
7060.000	43.125	43.320			R=2.0%
7080.000	43.485	43.680			R=2.0%
7100.000	43.845	44.040			R=2.0%
7120.000	44.205	44.400			R=2.0%
7140.000	44.565	44.760			R=2.0%
7160.000	44.925	45.120			R=2.0%
7180.000	45.285	45.480			R=2.0%
7200.000	45.645	45.840			R=2.0%
7220.000	46.005	46.200			R=2.0%
7240.000	46.365	46.560			R=2.0%
7260.000	46.725	46.920			R=2.0%
7280.000	47.085	47.280			R=2.0%
7300.000	47.445	47.640			R=2.0%
7320.000	47.805	48.000			R=2.0%
7340.000	48.165	48.360			R=2.0%
7360.000	48.525	48.720			R=2.0%
7380.000	48.885	49.080			R=2.0%
7400.000	49.245	49.440			R=2.0%
7420.000	49.605	49.800			R=2.0%
7440.000	49.965	50.160			R=2.0%
7460.000	50.325	50.520			R=2.0%
7480.000	50.685	50.880			R=2.0%
7500.000	51.045	51.240			R=2.0%
7520.000	51.405	51.600			R=2.0%
7540.000	51.765	51.960			R=2.0%
7560.000	52.125	52.320			R=2.0%
7580.000	52.485	52.680			R=2.0%
7600.000	52.845	53.040			R=2.0%
7620.000	53.205	53.400			R=2.0%
7640.000	53.565	53.760			R=2.0%
7660.000	53.925	54.120			R=2.0%
7680.000	54.285	54.480			R=2.0%
7700.000	54.645	54.840			R=2.0%
7720.000	55.005	55.200			R=2.0%
7740.000	55.365	55.560			R=2.0%
7760.000	55.725	55.920			R=2.0%
7780.000	56.085	56.280			R=2.0%
7800.000	56.445	56.640			R=2.0%
7820.000	56.805	57.000			R=2.0%
7840.000	57.165	57.360			R=2.0%
7860.000	57.525	57.720			R=2.0%
7880.000	57.885	58.080			R=2.0%
7900.000	58.245	58.440			R=2.0%
7920.000	58.605	58.800			R=2.0%
7940.000	58.965	59.160			R=2.0%
7960.000	59.325	59.520			R=2.0%
7980.000	59.685	59.880			R=2.0%
8000.000	60.045	60.240			R=2.0%

WESTBOUND PROFILE
SCALE 1:2500H 1:500V

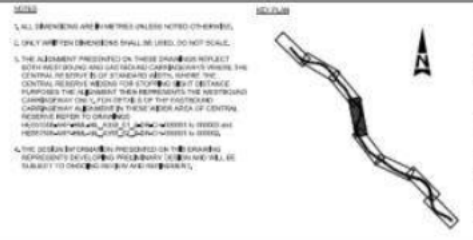
1. All levels are based on the datum of Mean Sea Level (MSL) as defined in the British Standard BS 8888:2002. All levels are given in meters above MSL unless otherwise stated.
2. The proposed levels are based on the datum of Mean Sea Level (MSL) as defined in the British Standard BS 8888:2002. All levels are given in meters above MSL unless otherwise stated.
3. The existing levels are based on the datum of Mean Sea Level (MSL) as defined in the British Standard BS 8888:2002. All levels are given in meters above MSL unless otherwise stated.
4. The proposed levels are based on the datum of Mean Sea Level (MSL) as defined in the British Standard BS 8888:2002. All levels are given in meters above MSL unless otherwise stated.

LEGEND

- EXISTING BOUNDARY
- PROPOSED LEVELS
- EXISTING LEVELS

NOTES

- ALL DIMENSIONS ARE IN METERS UNLESS NOTED OTHERWISE.
- THE PROPOSED LEVELS SHALL BE USED, DO NOT SCALE.
- THE ADJUSTMENT PROVIDED ON THESE DIMENSIONS SHALL BE USED TO CORRECT ANY DIMENSIONS THAT DO NOT BALANCE. THE ADJUSTMENT SHALL BE APPLIED TO THE DIMENSIONS THAT DO NOT BALANCE. THE ADJUSTMENT SHALL BE APPLIED TO THE DIMENSIONS THAT DO NOT BALANCE.
- THE PROPOSED LEVELS SHALL BE USED, DO NOT SCALE.
- THE ADJUSTMENT PROVIDED ON THESE DIMENSIONS SHALL BE USED TO CORRECT ANY DIMENSIONS THAT DO NOT BALANCE. THE ADJUSTMENT SHALL BE APPLIED TO THE DIMENSIONS THAT DO NOT BALANCE. THE ADJUSTMENT SHALL BE APPLIED TO THE DIMENSIONS THAT DO NOT BALANCE.
- THE PROPOSED LEVELS SHALL BE USED, DO NOT SCALE.
- THE ADJUSTMENT PROVIDED ON THESE DIMENSIONS SHALL BE USED TO CORRECT ANY DIMENSIONS THAT DO NOT BALANCE. THE ADJUSTMENT SHALL BE APPLIED TO THE DIMENSIONS THAT DO NOT BALANCE. THE ADJUSTMENT SHALL BE APPLIED TO THE DIMENSIONS THAT DO NOT BALANCE.



SAFETY, HEALTH AND ENVIRONMENTAL INFORMATION

CONTRACT NO: A358 TAUNTON TO SOUTHFIELDS DUALLING SCHEME

DATE: 04/05/22

PROJECT: A358 TAUNTON TO SOUTHFIELDS DUALLING SCHEME

LOCATION: A358 TAUNTON TO SOUTHFIELDS DUALLING SCHEME

SCALE: 1:2500H 1:500V

NO.	DATE	BY	CHKD	APPD
1	04/05/22	ARUP	ARUP	ARUP
2	04/05/22	ARUP	ARUP	ARUP
3	04/05/22	ARUP	ARUP	ARUP
4	04/05/22	ARUP	ARUP	ARUP

ARUP **RAMBOLL**

national highways

TAYLOR WOODROW
Taylor & Francis Group

A358 TAUNTON TO SOUTHFIELDS DUALLING SCHEME

A358 PLAN AND PROFILE - SHEET 4
SECTION 2/3 MATTOCK'S TREE GREEN JUNCTION TO BICKENHALL LANE

Project No: A358 TAUNTON TO SOUTHFIELDS DUALLING SCHEME

Drawn By: HML

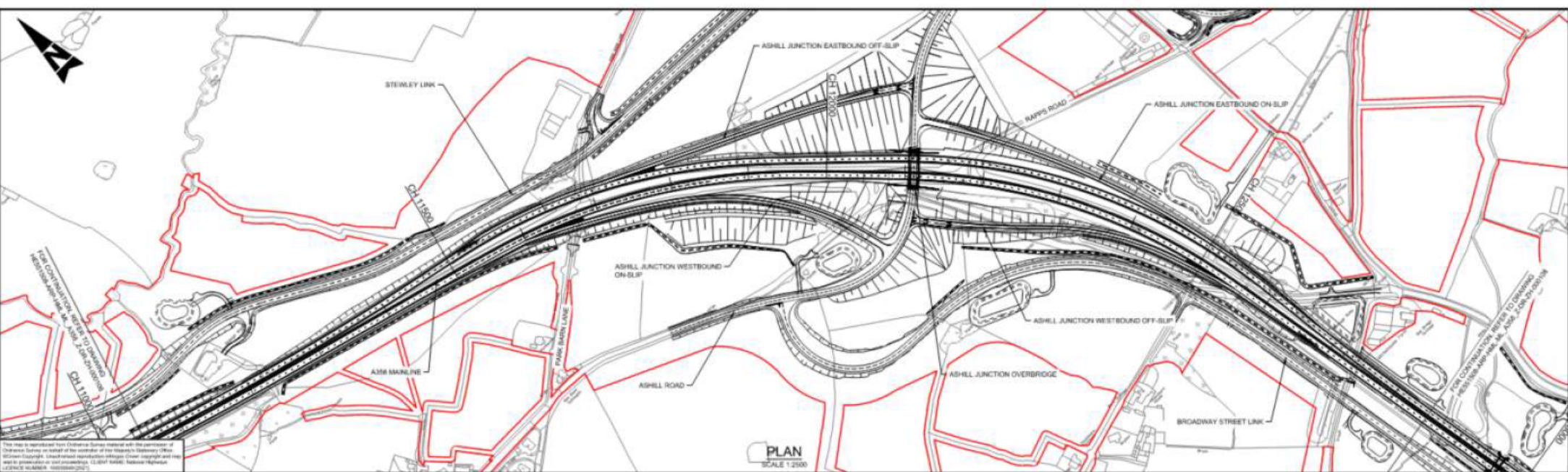
Checked By: ARP

Date: 04/05/22

Scale: 1:2500H 1:500V

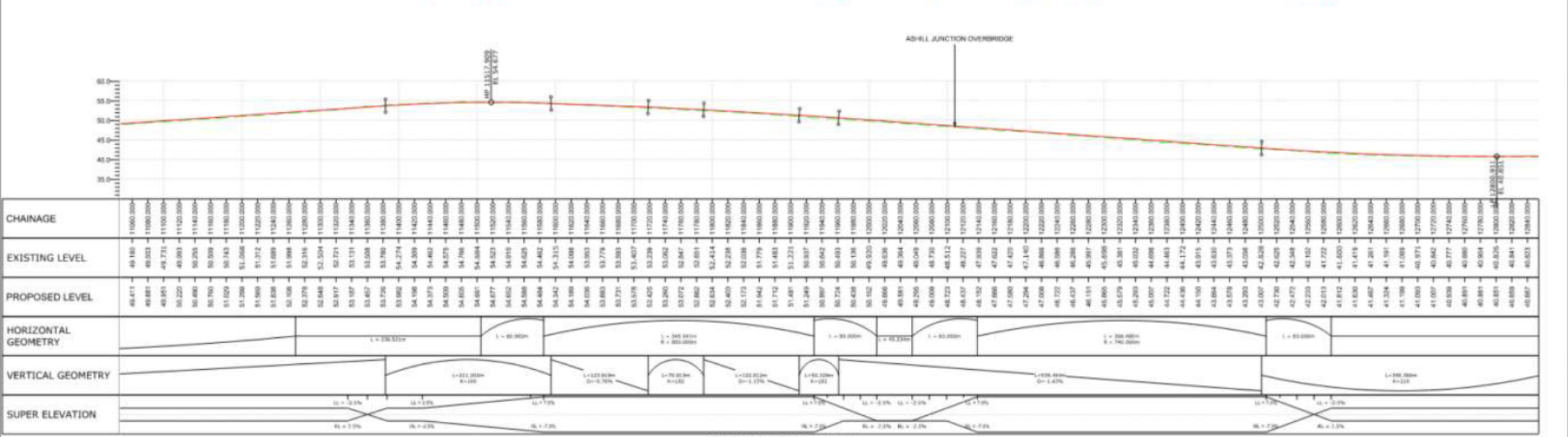
Sheet No: P01

DO NOT SCALE



This plan is based on Ordnance Survey data with the assistance of aerial photography and ground truthing. It is not intended to be used for legal purposes. It is the responsibility of the user to verify the accuracy of the data and to ensure that it is suitable for the intended purpose.

PLAN SCALE 1:2500



WESTBOUND PROFILE SCALE 1:2000 1:5000

LEGEND

- NORMAL BOUNDARY
- PROPOSED LEVELS
- EXISTING LEVELS

NOTES

1. ALL DIMENSIONS ARE IN METERS UNLESS OTHERWISE STATED.
2. THE ALLOCATION PROVIDED ON THESE DRAWINGS RELATES TO THE CENTRAL RESERVE WIDTH FOR EXISTING ROAD DISTANCE. THE ALLOCATION PROVIDED REPRESENTS THE SETBACKS FOR EXISTING ROAD ONLY. FOR DETAILS OF THE CENTRAL RESERVE WIDTHS TO EXISTING ROAD DISTANCE, REFER TO THE DESIGN INFORMATION SHEET.
3. THE DESIGN INFORMATION PROVIDED ON THIS DRAWING REPRESENTS DEVELOPMENT FROM NEARBY DESIGN AND WILL BE SUBJECT TO FURTHER REVIEW AND REVISION.

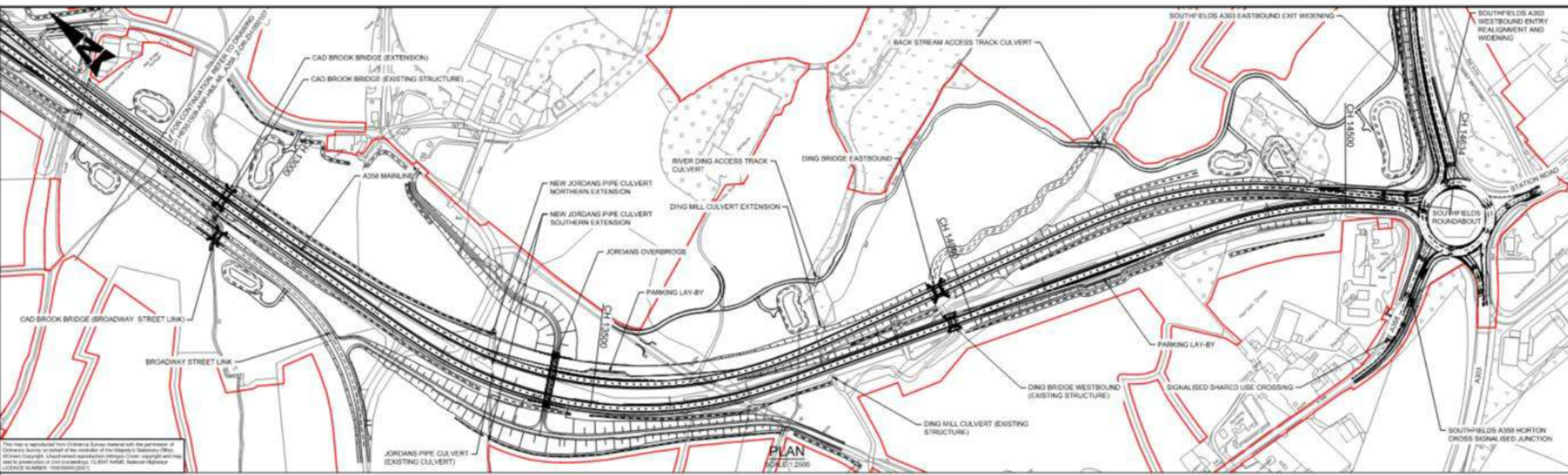
SAFETY, HEALTH AND ENVIRONMENTAL INFORMATION

CONTRACTOR / CLEANER	NAME
DATE	
LOCATION	
DECOMMISSIONING / DEMOLITION	NAME
DATE	

REV	DATE	DESCRIPTION	BY	CHECKED	DATE

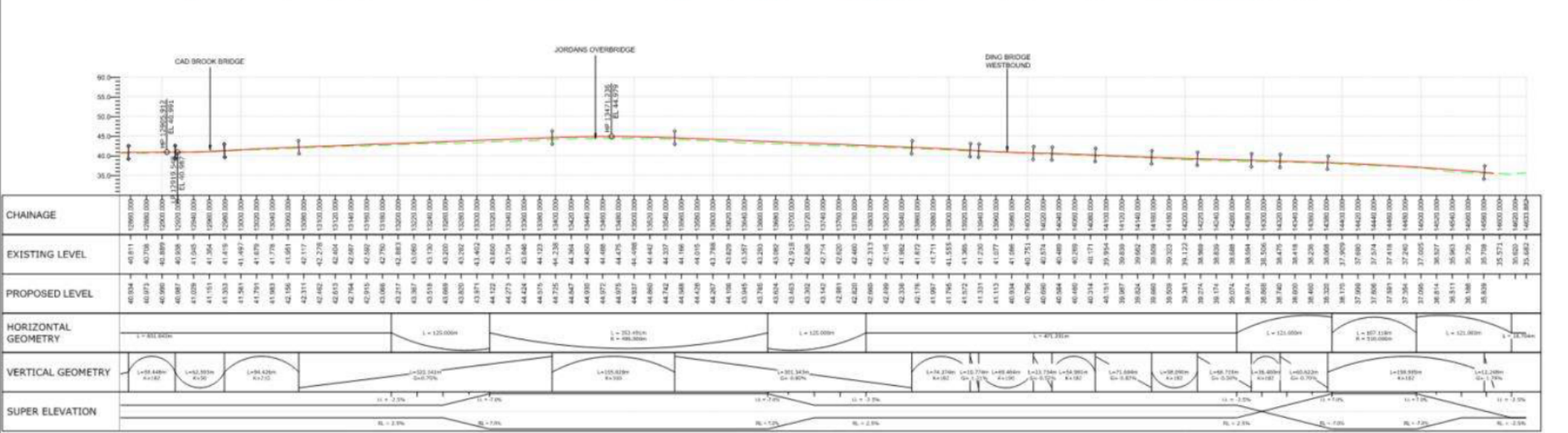
Project Title: A358 TAUNTON TO SOUTHFIELDS DUALLING SCHEME
Sheet Title: A358 PLAN AND PROFILE - SHEET 7 SECTION 4 ASHILL JUNCTION
Date: 04/05/22
Scale: 1:2500
Author: HML
Checker: HML
Number: ML_A358_Z - DR - ZH - 000107
Revision: P01

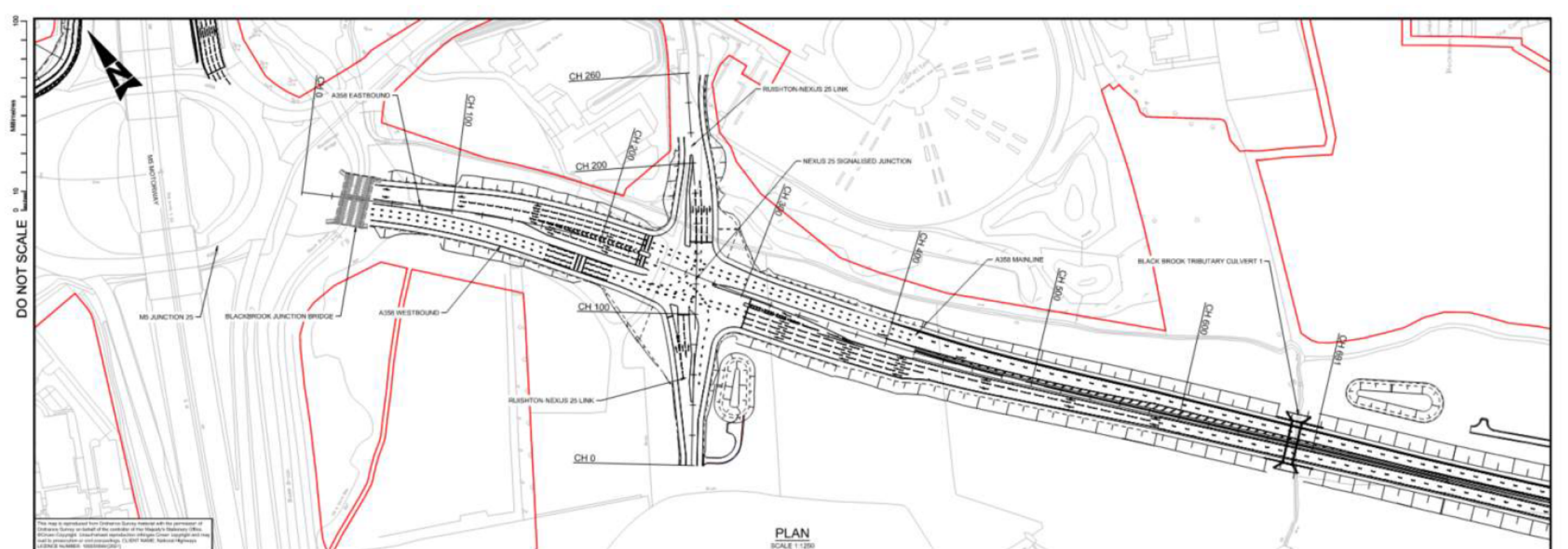
DO NOT SCALE



This plan is reproduced from Ordnance Survey material with the permission of Ordnance Survey on behalf of the Controller of Her Majesty's Stationery Office. Crown Copyright. Unauthorised reproduction is prohibited. All rights reserved. No part of this publication may be reproduced, stored in a retrieval system, or transmitted in any form or by any means, electronic, mechanical, photocopying, recording, or by any information storage or retrieval system, without the prior written permission of Ordnance Survey. Licence number: 100049202.

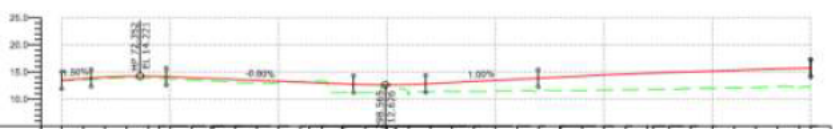
PLAN SCALE 1:2500





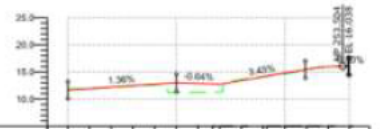
This map is reproduced from Ordnance Survey material with the permission of Ordnance Survey on behalf of the Controller of the Copyright Licensing Agency. Unauthorised reproduction infringes Crown Copyright and may lead to prosecution or civil proceedings. OS 10001 50000 National Grid Reference: SU8290 920000 (2015)

PLAN
SCALE 1:1250



CHAINAGE	80.000	100.000	120.000	140.000	160.000	180.000	200.000	220.000	240.000	260.000	280.000	300.000	320.000	340.000	360.000	380.000	400.000	420.000	440.000	460.000	480.000	500.000		
EXISTING LEVEL	13.464	13.000	13.770	14.541	15.312	16.083	16.854	17.625	18.396	19.167	19.938	20.709	21.480	22.251	23.022	23.793	24.564	25.335	26.106	26.877	27.648	28.419	29.190	
PROPOSED LEVEL	13.472	13.770	14.168	14.566	14.964	15.362	15.760	16.158	16.556	16.954	17.352	17.750	18.148	18.546	18.944	19.342	19.740	20.138	20.536	20.934	21.332	21.730	22.128	
HORIZONTAL GEOMETRY	L = 80.000m		L = 80.000m		L = 80.000m		L = 80.000m		L = 80.000m		L = 80.000m		L = 80.000m		L = 80.000m		L = 80.000m		L = 80.000m		L = 80.000m		L = 80.000m	
VERTICAL GEOMETRY	L=27.252m G=1.00%		L=80.000m G=1.00%		L=172.613m G=1.00%		L=105.000m G=1.00%		L=105.000m G=1.00%		L=105.000m G=1.00%		L=105.000m G=1.00%		L=105.000m G=1.00%		L=105.000m G=1.00%		L=105.000m G=1.00%		L=105.000m G=1.00%		L=105.000m G=1.00%	

A358 MAINLINE THROUGH NEXUS 25 SIGNALISED JUNCTION - PROFILE
SCALE 1:2500@1:500V



CHAINAGE	30.000	40.000	50.000	60.000	70.000	80.000	90.000	100.000	110.000	120.000	130.000	140.000	150.000	160.000	170.000	180.000	190.000	200.000	210.000	220.000	230.000	240.000	250.000	
EXISTING LEVEL	11.935	11.962	12.110	12.258	12.406	12.554	12.702	12.850	12.998	13.146	13.294	13.442	13.590	13.738	13.886	14.034	14.182	14.330	14.478	14.626	14.774	14.922	15.070	15.218
PROPOSED LEVEL	11.847	11.918	12.148	12.378	12.608	12.838	13.068	13.298	13.528	13.758	13.988	14.218	14.448	14.678	14.908	15.138	15.368	15.598	15.828	16.058	16.288	16.518	16.748	16.978
HORIZONTAL GEOMETRY	L = 100.000m		L = 100.000m		L = 100.000m		L = 100.000m		L = 100.000m		L = 100.000m		L = 100.000m		L = 100.000m		L = 100.000m		L = 100.000m		L = 100.000m		L = 100.000m	
VERTICAL GEOMETRY	L=100.000m G=1.36%		L=100.000m G=-0.64%		L=100.000m G=1.43%		L=100.000m G=1.43%		L=100.000m G=1.43%		L=100.000m G=1.43%		L=100.000m G=1.43%		L=100.000m G=1.43%		L=100.000m G=1.43%		L=100.000m G=1.43%		L=100.000m G=1.43%		L=100.000m G=1.43%	

RUISHTON-NEXUS 25 LINK - PROFILE
SCALE 1:2500@1:500V

LEGEND

- SCHEME BOUNDARY
- PROPOSED LEVELS
- EXISTING LEVELS

NOTES

- ALL DIMENSIONS ARE IN METRES UNLESS NOTED OTHERWISE
- ALL VERTICAL DIMENSIONS SHALL BE NOTED TO 100MM SCALE
- THE DESIGN INFORMATION PRESENTED ON THIS DRAWING IS SUBJECT TO CHANGING REQUIREMENTS AND REVISIONS

SCALE

SAFETY, HEALTH AND ENVIRONMENTAL INFORMATION

IN ADDITION TO THE HAZARD INFORMATION ASSOCIATED WITH THE TYPES OF WORK IDENTIFIED ON THIS DRAWING, NOTE THE FOLLOWING SIGNIFICANT RESIDUAL RISKS/PRESENTATIONS SHALL ALSO BE MADE TO THE DESIGN HAZARD LOG

CONSTRUCTION

OPERATION - CLEARING

USE

DISCOMMISSIONING - DEMOLITION

PH SWISS ISSUED FOR INFORMATION

Rev: 001 Date: 04/05/22

Submitted: S2
Drawing Status: SUITABLE FOR INFORMATION

Taylor Woodrow
together @ VINCI

ARUP

national highways

Project Title: A358 TAUNTON TO SOUTHFIELDS DUALLING SCHEME

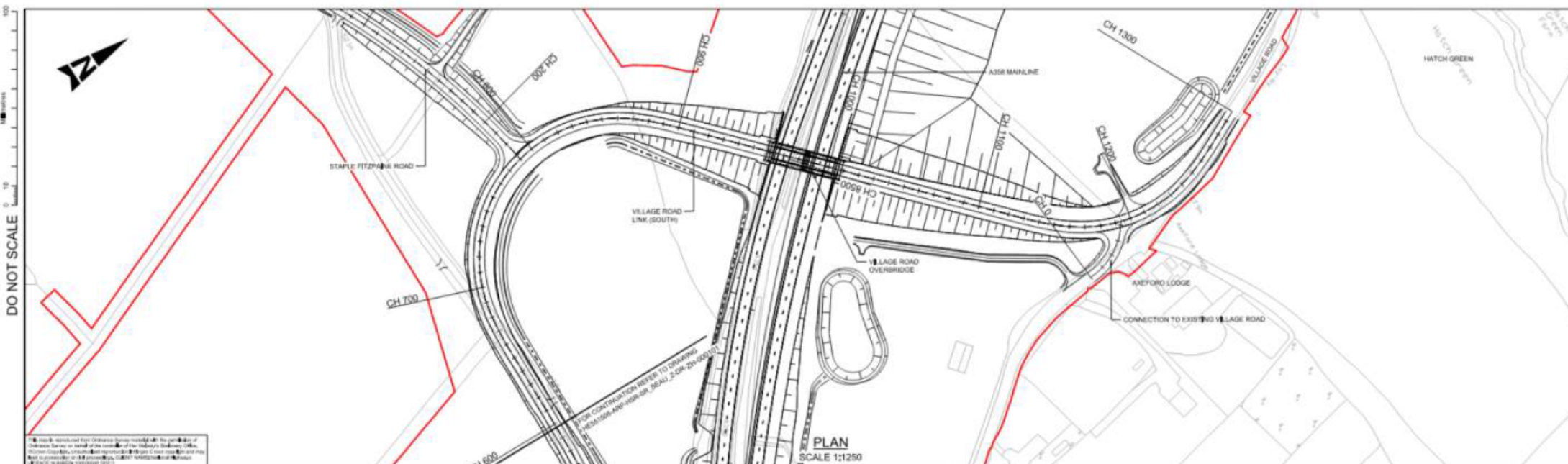
Drawing Title: NEXUS 25 SIGNALISED JUNCTION PLAN AND PROFILE SECTION 1 SHEET 1

Drawn By: [Name]
Checked By: [Name]
Approved By: [Name]

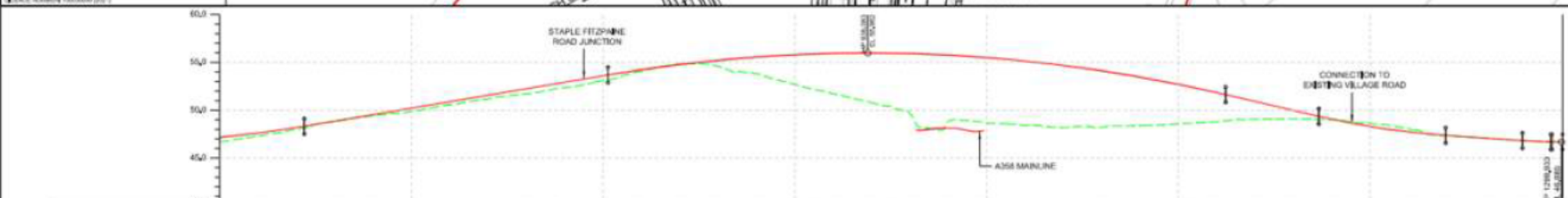
Original No: AT Date: 04/05/22
Revision: HE551508 - ARP - HSR
JN_NEXUS_Z - DR - ZH - 000101

Location: [Location]
Type: [Type]
Role: [Role]
Number: [Number]

Sheet No: P01

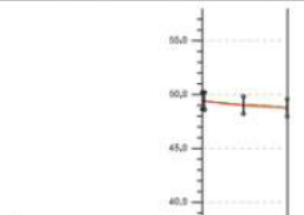


DO NOT SCALE



CHAINAGE	EXISTING LEVEL	PROPOSED LEVEL	HORIZONTAL GEOMETRY	VERTICAL GEOMETRY	SUPERELEVATION
600.000	46.271	47.141	L = 46.257m	L = 106.671m K = 30	LL = -0.2% RL = -0.5%
620.000	47.205	47.698	L = 46.475m Ls = 64.675m	L = 115.452m K = 30	LL = -0.2% RL = -0.2%
640.000	47.271	48.191	L = 167.248m K = 90.000m	L = 323.143m K = 40	LL = -0.2% RL = -0.2%
660.000	48.305	48.684	L = 46.475m Ls = 64.675m	L = 46.475m Ls = 64.675m	LL = -0.2% RL = -0.2%
680.000	48.371	48.684	L = 167.248m K = 90.000m	L = 323.143m K = 40	LL = -0.2% RL = -0.2%
700.000	48.436	48.684	L = 46.475m Ls = 64.675m	L = 46.475m Ls = 64.675m	LL = -0.2% RL = -0.2%
720.000	48.501	48.684	L = 167.248m K = 90.000m	L = 323.143m K = 40	LL = -0.2% RL = -0.2%
740.000	48.566	48.684	L = 46.475m Ls = 64.675m	L = 46.475m Ls = 64.675m	LL = -0.2% RL = -0.2%
760.000	48.631	48.684	L = 167.248m K = 90.000m	L = 323.143m K = 40	LL = -0.2% RL = -0.2%
780.000	48.696	48.684	L = 46.475m Ls = 64.675m	L = 46.475m Ls = 64.675m	LL = -0.2% RL = -0.2%
800.000	48.761	48.684	L = 167.248m K = 90.000m	L = 323.143m K = 40	LL = -0.2% RL = -0.2%
820.000	48.826	48.684	L = 46.475m Ls = 64.675m	L = 46.475m Ls = 64.675m	LL = -0.2% RL = -0.2%
840.000	48.891	48.684	L = 167.248m K = 90.000m	L = 323.143m K = 40	LL = -0.2% RL = -0.2%
860.000	48.956	48.684	L = 46.475m Ls = 64.675m	L = 46.475m Ls = 64.675m	LL = -0.2% RL = -0.2%
880.000	49.021	48.684	L = 167.248m K = 90.000m	L = 323.143m K = 40	LL = -0.2% RL = -0.2%
900.000	49.086	48.684	L = 46.475m Ls = 64.675m	L = 46.475m Ls = 64.675m	LL = -0.2% RL = -0.2%
920.000	49.151	48.684	L = 167.248m K = 90.000m	L = 323.143m K = 40	LL = -0.2% RL = -0.2%
940.000	49.216	48.684	L = 46.475m Ls = 64.675m	L = 46.475m Ls = 64.675m	LL = -0.2% RL = -0.2%
960.000	49.281	48.684	L = 167.248m K = 90.000m	L = 323.143m K = 40	LL = -0.2% RL = -0.2%
980.000	49.346	48.684	L = 46.475m Ls = 64.675m	L = 46.475m Ls = 64.675m	LL = -0.2% RL = -0.2%
1000.000	49.411	48.684	L = 167.248m K = 90.000m	L = 323.143m K = 40	LL = -0.2% RL = -0.2%
1020.000	49.476	48.684	L = 46.475m Ls = 64.675m	L = 46.475m Ls = 64.675m	LL = -0.2% RL = -0.2%
1040.000	49.541	48.684	L = 167.248m K = 90.000m	L = 323.143m K = 40	LL = -0.2% RL = -0.2%
1060.000	49.606	48.684	L = 46.475m Ls = 64.675m	L = 46.475m Ls = 64.675m	LL = -0.2% RL = -0.2%
1080.000	49.671	48.684	L = 167.248m K = 90.000m	L = 323.143m K = 40	LL = -0.2% RL = -0.2%
1100.000	49.736	48.684	L = 46.475m Ls = 64.675m	L = 46.475m Ls = 64.675m	LL = -0.2% RL = -0.2%
1120.000	49.801	48.684	L = 167.248m K = 90.000m	L = 323.143m K = 40	LL = -0.2% RL = -0.2%
1140.000	49.866	48.684	L = 46.475m Ls = 64.675m	L = 46.475m Ls = 64.675m	LL = -0.2% RL = -0.2%
1160.000	49.931	48.684	L = 167.248m K = 90.000m	L = 323.143m K = 40	LL = -0.2% RL = -0.2%
1180.000	49.996	48.684	L = 46.475m Ls = 64.675m	L = 46.475m Ls = 64.675m	LL = -0.2% RL = -0.2%
1200.000	50.061	48.684	L = 167.248m K = 90.000m	L = 323.143m K = 40	LL = -0.2% RL = -0.2%
1220.000	50.126	48.684	L = 46.475m Ls = 64.675m	L = 46.475m Ls = 64.675m	LL = -0.2% RL = -0.2%
1240.000	50.191	48.684	L = 167.248m K = 90.000m	L = 323.143m K = 40	LL = -0.2% RL = -0.2%
1260.000	50.256	48.684	L = 46.475m Ls = 64.675m	L = 46.475m Ls = 64.675m	LL = -0.2% RL = -0.2%
1280.000	50.321	48.684	L = 167.248m K = 90.000m	L = 323.143m K = 40	LL = -0.2% RL = -0.2%
1300.000	50.386	48.684	L = 46.475m Ls = 64.675m	L = 46.475m Ls = 64.675m	LL = -0.2% RL = -0.2%
1320.000	50.451	48.684	L = 167.248m K = 90.000m	L = 323.143m K = 40	LL = -0.2% RL = -0.2%
1340.000	50.516	48.684	L = 46.475m Ls = 64.675m	L = 46.475m Ls = 64.675m	LL = -0.2% RL = -0.2%
1360.000	50.581	48.684	L = 167.248m K = 90.000m	L = 323.143m K = 40	LL = -0.2% RL = -0.2%
1380.000	50.646	48.684	L = 46.475m Ls = 64.675m	L = 46.475m Ls = 64.675m	LL = -0.2% RL = -0.2%
1400.000	50.711	48.684	L = 167.248m K = 90.000m	L = 323.143m K = 40	LL = -0.2% RL = -0.2%

VILLAGE ROAD LINK (SOUTH) PROFILE
SCALE 1:1250H 1:250V



CHAINAGE	EXISTING LEVEL	PROPOSED LEVEL	HORIZONTAL GEOMETRY	VERTICAL GEOMETRY	SUPERELEVATION
1200.000	49.000	49.000	L = 46.475m Ls = 64.675m	L = 46.475m Ls = 64.675m	LL = -0.2% RL = -0.2%
1250.000	48.000	48.000	L = 46.475m Ls = 64.675m	L = 46.475m Ls = 64.675m	LL = -0.2% RL = -0.2%

CONNECTION TO EXISTING VILLAGE ROAD PROFILE
SCALE 1:1250H 1:250V

LEGEND

- SEARCHED BOUNDARY
- PROPOSED LEVELS
- EXISTING LEVELS

NOTES

- ALL DIMENSIONS ARE METERS UNLESS NOTED OTHERWISE.
- ONLY DIMENSIONS SHOWN SHALL BE USED, DO NOT SCALE.
- THE DESIGNER'S RESPONSIBILITY IS TO PROVIDE A SAFE AND SOUND DESIGN FOR THE PROJECT. THE CLIENT'S RESPONSIBILITY IS TO PROVIDE A CLEAR AND ACCURATE BRIEF AND TO APPROVE THE DESIGN.

SAFETY, HEALTH AND ENVIRONMENTAL INFORMATION

NO.	DATE	DESCRIPTION
1	04/05/22	ISSUED FOR INFORMATION

NO.	DATE	DESCRIPTION
1	04/05/22	ISSUED FOR INFORMATION

TAYLOR WOODROW
Together with VINCI

ARUP **RAMBOLL**

national highways

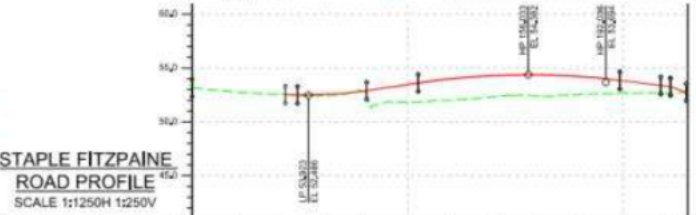
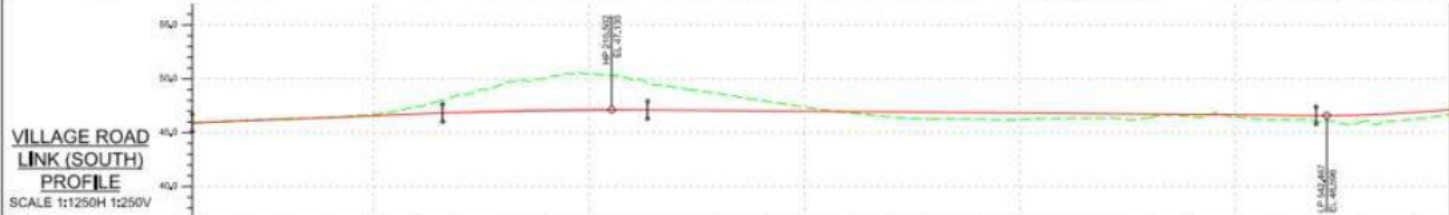
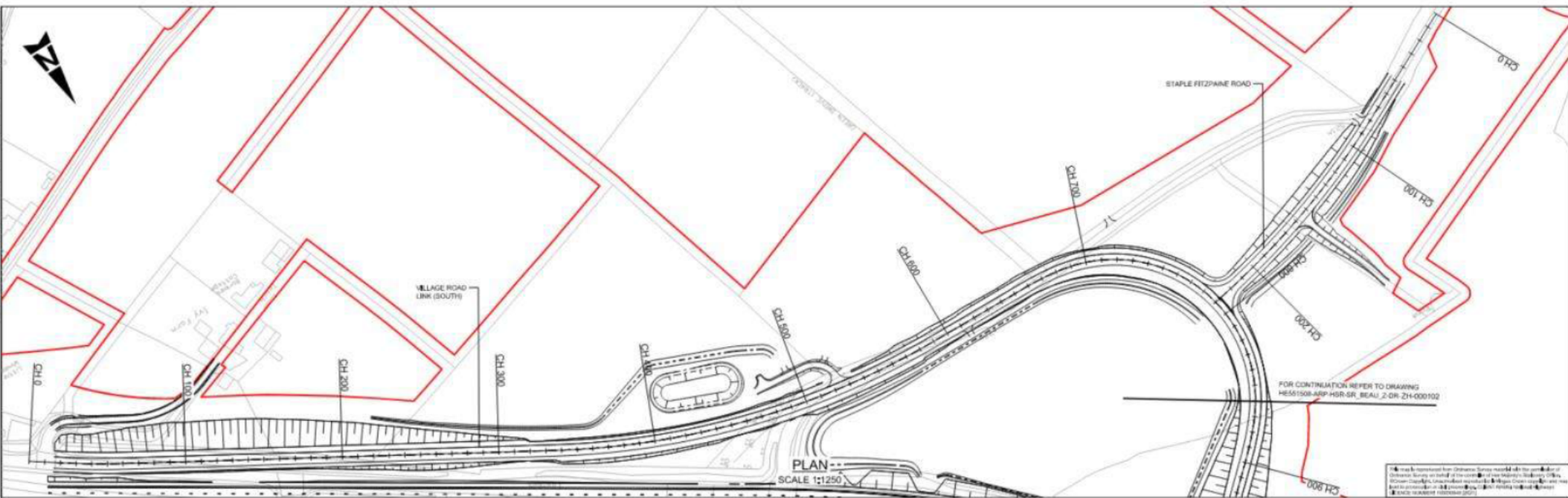
A358 TAUNTON TO SOUTHFIELDS DUALING SCHEME

VILLAGE ROAD PLAN AND PROFILE SECTION 3 SHEET 2 OF 2

NO.	DATE	DESCRIPTION
1	04/05/22	ISSUED FOR INFORMATION

HE551508 - ARP - HSR
SR_BEAU_Z - DR - ZH-000102

DO NOT SCALE



CHAINAGE	70,000	80,000	90,000	100,000	110,000	120,000	130,000	140,000	150,000	160,000	170,000	180,000	190,000	200,000	210,000	220,000	230,000	240,000	250,000
EXISTING LEVEL	45.854	46.128	46.275	46.507	46.714	46.871	47.028	47.185	47.342	47.500	47.657	47.814	47.971	48.128	48.285	48.442	48.599	48.756	48.913
PROPOSED LEVEL	45.843	46.000	46.275	46.507	46.714	46.871	47.028	47.185	47.342	47.500	47.657	47.814	47.971	48.128	48.285	48.442	48.599	48.756	48.913
HORIZONTAL GEOMETRY	<p>L=112.51m K=100 G=0.73%</p> <p>L=250.470m K=100</p> <p>L=15.11m K=100 G=0.73%</p> <p>L=245.752m R=510.200m</p> <p>L=106.633m K=30 G=0.73%</p>																		
VERTICAL GEOMETRY	<p>L=116.515m K=100 G=0.73%</p> <p>L=95.171m K=100</p> <p>L=310.325m K=100 G=0.73%</p> <p>L=106.633m K=30 G=0.73%</p>																		
SUPERELEVATION	<p>SL=0.25% RL=0.25%</p> <p>SL=0.25% RL=0.25%</p> <p>SL=0.25% RL=0.25%</p> <p>SL=0.25% RL=0.25%</p>																		

CHAINAGE	0,000	20,000	40,000	60,000	80,000	100,000	120,000	140,000	160,000	180,000	200,000	220,000
EXISTING LEVEL	53.502	53.708	53.913	54.119	54.324	54.529	54.734	54.939	55.144	55.349	55.554	55.759
PROPOSED LEVEL	53.500	53.708	53.913	54.119	54.324	54.529	54.734	54.939	55.144	55.349	55.554	55.759
HORIZONTAL GEOMETRY	<p>L=77.222m</p> <p>L=111.246m R=520.000m</p> <p>L=15.140m K=100</p>											
VERTICAL GEOMETRY	<p>L=32.144m K=100 G=0.31%</p> <p>L=93.650m K=17 G=0.31%</p> <p>L=15.140m K=100 G=0.31%</p>											
SUPERELEVATION	<p>SL=0.25% RL=0.25%</p> <p>SL=0.25% RL=0.25%</p> <p>SL=0.25% RL=0.25%</p>											

LEGEND

- SCHEMATIC
- EXISTING BOUNDARY
- PROPOSED LEVELS
- EXISTING LEVELS

NOTES

1. ALL DIMENSIONS ARE METRES UNLESS NOTED OTHERWISE.
2. ONLY DIMENSIONS SHOWN SHALL BE USED. DO NOT SCALE.
3. THE DESIGNER'S RESPONSIBILITY IS LIMITED TO THE DESIGN OF THE ROAD AND ITS INFRASTRUCTURE. THE CLIENT SHALL BE RESPONSIBLE FOR THE DESIGN OF THE ROAD AND ITS INFRASTRUCTURE.

SAFETY, HEALTH AND ENVIRONMENTAL INFORMATION			
NOISE			
TRAFFIC			
ENVIRONMENT			
CLIMATE			
WATER			
AIR			
SOIL			
VEGETATION			
LANDSCAPE			
ARCHITECTURE			
HERITAGE			
ARTS AND CULTURE			
RECREATION			
SPORTS			
ENTERTAINMENT			
COMMUNITY			
INDUSTRY			
DEFENCE			
RELIGION			
SCIENCE			
TECHNOLOGY			
INFORMATION			
COMMUNICATIONS			
ENERGY			
WATER			
AIR			
SOIL			
VEGETATION			
LANDSCAPE			
ARCHITECTURE			
HERITAGE			
ARTS AND CULTURE			
RECREATION			
SPORTS			
ENTERTAINMENT			
COMMUNITY			
INDUSTRY			
DEFENCE			
RELIGION			
SCIENCE			
TECHNOLOGY			
INFORMATION			
COMMUNICATIONS			
ENERGY			

CLIENT

A358 TAUNTON TO SOUTHFIELDS
DUALLING SCHEME

DESIGNER

TAYLOR WOODROW
together with VINCI

ARUP RAMBOLL

national highways

DATE

04/05/22

PROJECT

HE551508 - ARP - HSR
SR_BEAU_Z - DR - ZH-000101

SHEET

SECTION 3
SHEET 1 OF 2

SCALE

1:1250H 1:250V

DATE

04/05/22

PROJECT

HE551508 - ARP - HSR
SR_BEAU_Z - DR - ZH-000101

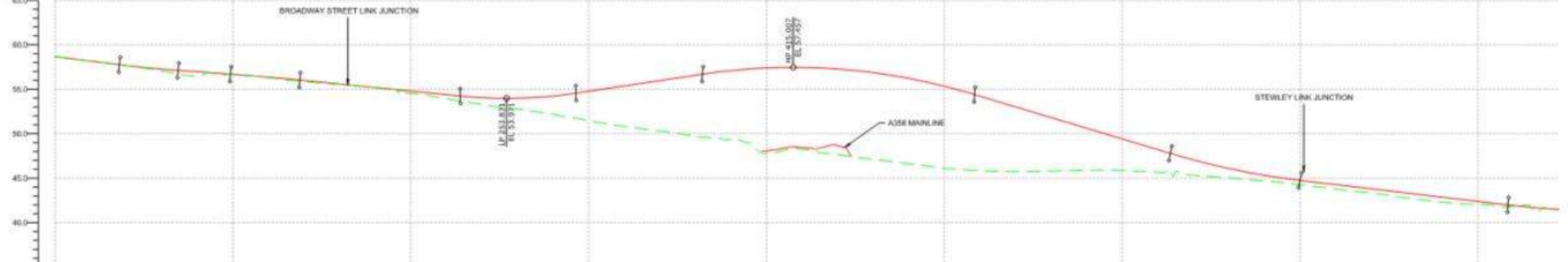
SHEET

SECTION 3
SHEET 1 OF 2

DO NOT SCALE



This plan is reproduced from Ordnance Survey data with the permission of Ordnance Survey on behalf of the Secretary of State for the Environment, Food and Rural Affairs. It is not to be used for navigation or other purposes. CROWN COPYRIGHT. All rights reserved.



CHAINAGE	EXISTING LEVEL	PROPOSED LEVEL	HORIZONTAL GEOMETRY	VERTICAL GEOMETRY	SUPER ELEVATION
00.000	58.650	58.650	L = 22.447m R = 720.000m	L = 16.172m S = 2.10%	SL = -2.5%
20.000	58.150	58.150	L = 118.513m R = 720.000m	L = 15.000m S = 1.40%	SL = -2.5%
40.000	57.867	57.867	L = 118.513m R = 720.000m	L = 15.000m S = 1.40%	SL = -2.5%
60.000	57.583	57.583	L = 118.513m R = 720.000m	L = 15.000m S = 1.40%	SL = -2.5%
80.000	56.908	56.908	L = 118.513m R = 720.000m	L = 15.000m S = 1.40%	SL = -2.5%
100.000	56.686	56.686	L = 118.513m R = 720.000m	L = 15.000m S = 1.40%	SL = -2.5%
120.000	56.300	56.300	L = 118.513m R = 720.000m	L = 15.000m S = 1.40%	SL = -2.5%
140.000	55.885	55.885	L = 118.513m R = 720.000m	L = 15.000m S = 1.40%	SL = -2.5%
160.000	55.587	55.587	L = 118.513m R = 720.000m	L = 15.000m S = 1.40%	SL = -2.5%
180.000	55.178	55.178	L = 118.513m R = 720.000m	L = 15.000m S = 1.40%	SL = -2.5%
200.000	54.519	54.519	L = 118.513m R = 720.000m	L = 15.000m S = 1.40%	SL = -2.5%
220.000	53.826	53.826	L = 118.513m R = 720.000m	L = 15.000m S = 1.40%	SL = -2.5%
240.000	53.289	53.289	L = 118.513m R = 720.000m	L = 15.000m S = 1.40%	SL = -2.5%
260.000	52.798	52.798	L = 118.513m R = 720.000m	L = 15.000m S = 1.40%	SL = -2.5%
280.000	52.117	52.117	L = 118.513m R = 720.000m	L = 15.000m S = 1.40%	SL = -2.5%
300.000	51.463	51.463	L = 118.513m R = 720.000m	L = 15.000m S = 1.40%	SL = -2.5%
320.000	50.819	50.819	L = 118.513m R = 720.000m	L = 15.000m S = 1.40%	SL = -2.5%
340.000	50.298	50.298	L = 118.513m R = 720.000m	L = 15.000m S = 1.40%	SL = -2.5%
360.000	49.770	49.770	L = 118.513m R = 720.000m	L = 15.000m S = 1.40%	SL = -2.5%
380.000	49.264	49.264	L = 118.513m R = 720.000m	L = 15.000m S = 1.40%	SL = -2.5%
400.000	48.726	48.726	L = 118.513m R = 720.000m	L = 15.000m S = 1.40%	SL = -2.5%
420.000	48.245	48.245	L = 118.513m R = 720.000m	L = 15.000m S = 1.40%	SL = -2.5%
440.000	47.668	47.668	L = 118.513m R = 720.000m	L = 15.000m S = 1.40%	SL = -2.5%
460.000	47.098	47.098	L = 118.513m R = 720.000m	L = 15.000m S = 1.40%	SL = -2.5%
480.000	46.530	46.530	L = 118.513m R = 720.000m	L = 15.000m S = 1.40%	SL = -2.5%
500.000	45.921	45.921	L = 118.513m R = 720.000m	L = 15.000m S = 1.40%	SL = -2.5%
520.000	45.221	45.221	L = 118.513m R = 720.000m	L = 15.000m S = 1.40%	SL = -2.5%
540.000	44.548	44.548	L = 118.513m R = 720.000m	L = 15.000m S = 1.40%	SL = -2.5%
560.000	43.887	43.887	L = 118.513m R = 720.000m	L = 15.000m S = 1.40%	SL = -2.5%
580.000	43.237	43.237	L = 118.513m R = 720.000m	L = 15.000m S = 1.40%	SL = -2.5%
600.000	42.597	42.597	L = 118.513m R = 720.000m	L = 15.000m S = 1.40%	SL = -2.5%
620.000	41.967	41.967	L = 118.513m R = 720.000m	L = 15.000m S = 1.40%	SL = -2.5%
640.000	41.347	41.347	L = 118.513m R = 720.000m	L = 15.000m S = 1.40%	SL = -2.5%
660.000	40.737	40.737	L = 118.513m R = 720.000m	L = 15.000m S = 1.40%	SL = -2.5%
680.000	40.137	40.137	L = 118.513m R = 720.000m	L = 15.000m S = 1.40%	SL = -2.5%
700.000	39.547	39.547	L = 118.513m R = 720.000m	L = 15.000m S = 1.40%	SL = -2.5%
720.000	38.967	38.967	L = 118.513m R = 720.000m	L = 15.000m S = 1.40%	SL = -2.5%
740.000	38.397	38.397	L = 118.513m R = 720.000m	L = 15.000m S = 1.40%	SL = -2.5%
760.000	37.837	37.837	L = 118.513m R = 720.000m	L = 15.000m S = 1.40%	SL = -2.5%
780.000	37.287	37.287	L = 118.513m R = 720.000m	L = 15.000m S = 1.40%	SL = -2.5%
800.000	36.747	36.747	L = 118.513m R = 720.000m	L = 15.000m S = 1.40%	SL = -2.5%
820.000	36.217	36.217	L = 118.513m R = 720.000m	L = 15.000m S = 1.40%	SL = -2.5%
840.000	35.687	35.687	L = 118.513m R = 720.000m	L = 15.000m S = 1.40%	SL = -2.5%

LEGEND

- SCHEME BOUNDARY
- PROPOSED LEVELS
- EXISTING LEVELS

NOTES

- ALL DIMENSIONS ARE IN METRES UNLESS NOTED OTHERWISE.
- LINE DRAWINGS SHALL BE USED AS A REFERENCE ONLY.
- THE DESIGN INFORMATION PRESENTED ON THIS DRAWING IS THE DESIGNER'S PRELIMINARY DESIGN AND SHALL BE SUBJECT TO CHANGING REQUIREMENTS.

SCALE

AS SHOWN

SAFETY, HEALTH AND ENVIRONMENTAL INFORMATION

IN ADDITION TO THE HAZARD INFORMATION NORMALLY ASSOCIATED WITH THE TYPES OF WORK DETAILED ON THIS DRAWING, NOTE THE FOLLOWING SO-CALLED RESIDUAL RISK INFORMATION SHALL ALSO BE MADE TO THE DESIGN HAZARD LOG.

CONSTRUCTION

MAINTENANCE / CLEANING

USE

DECOMMISSIONING / DEMOLITION

REV	DATE	DESCRIPTION	BY	CHECKED	DATE

Subject S2 SUITABLE FOR INFORMATION

Client A358 TAUNTON TO SOUTHFIELDS DUALLING SCHEME

Drawing Title ASHILL ROAD PLAN AND PROFILE SECTION 3/4 SHEET 1 OF 2

Scale As Shown

Origin Date 04/05/22

Issue 04/05/22

Author [Redacted]

Checked [Redacted]

Approved [Redacted]

Date 04/05/22

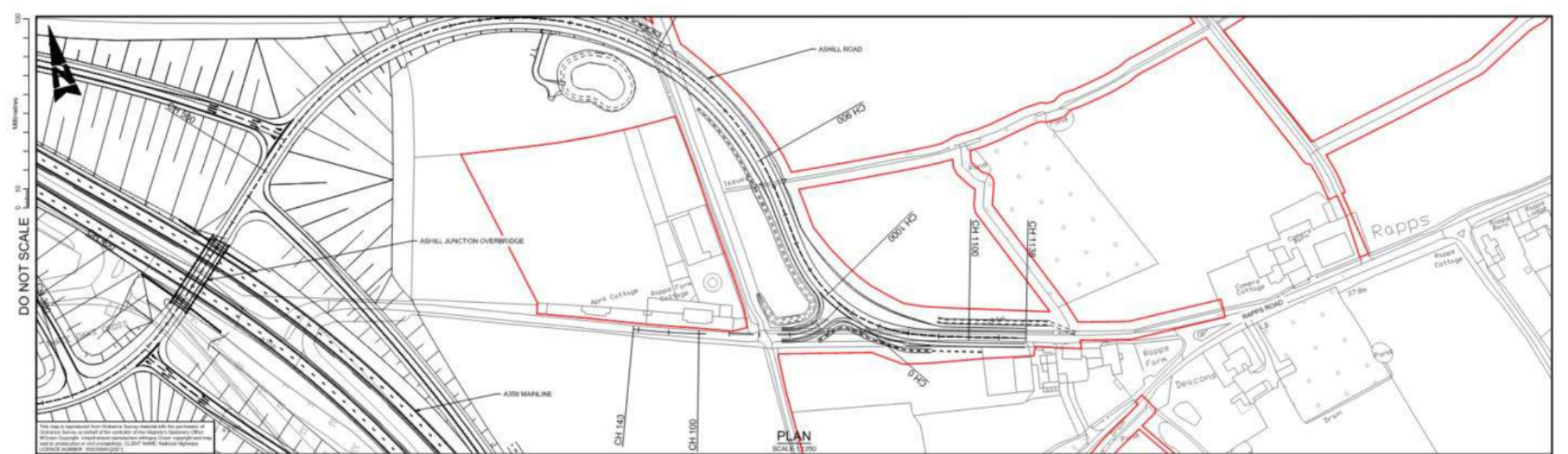
Project Number HE551508 - SR_ASHILL_Z - DR - ZH - 000101

Client ARUP

Contract HSR

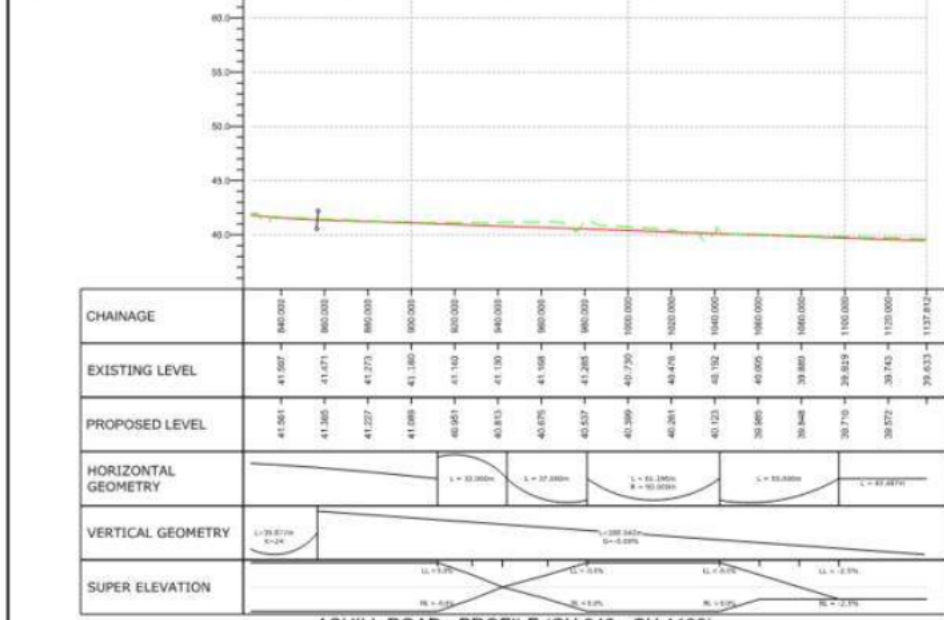
Product P01

Logos: TAYLOR WOODROW, ARUP, national highways



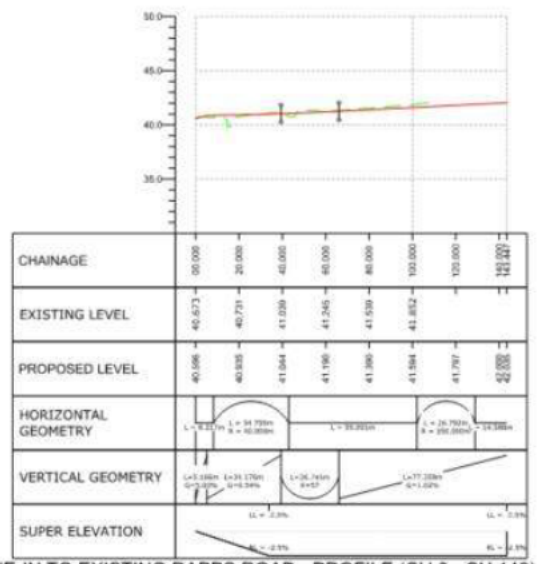
DO NOT SCALE

PLAN SCALE 1:250



ASHILL ROAD - PROFILE (CH 840 - CH 1138)

SCALE 1:1250 (1:250)



TIE-IN TO EXISTING RAPPS ROAD - PROFILE (CH 0 - CH 143)

SCALE 1:1250 (1:250)

LEGEND

- BOUNDARY
- PROPOSED LEVELS
- EXISTING LEVELS

NOTES

- ALL DIMENSIONS ARE UNLESS OTHERWISE SPECIFIED.
- ALL DIMENSIONS SHOWN SHALL BE USED TO SET OUT.
- THE DESIGN INFORMATION PRESENTED ON THIS DRAWING REPRESENTS THE DESIGNER'S BEST ESTIMATE AND SHALL BE SUBJECT TO CHANGING REVIEW AND REVISIONS.

ASSEMBLY

DATE

BY

FOR

REVISIONS

DISCOMMISSIONING / DEMOLITION

SCALE

SAFETY, HEALTH AND ENVIRONMENTAL INFORMATION

IN ADDITION TO THE INFORMATION NORMALLY ASSOCIATED WITH THE TYPES OF WORK DETAILLED ON THIS DRAWING, NOTE THE FOLLOWING SIGNIFICANT RISKS, PRIOR TO COMMENCING WORK. NOTE THE FOLLOWING SIGNIFICANT RISKS, PRIOR TO COMMENCING WORK.

CONSTRUCTION

OPERATION

DISCOMMISSIONING / DEMOLITION

Rev: 001 Date: 04/05/22

Rev	Date	Description	By	Check	Appr	Auth
001	04/05/22	ISSUED FOR INFORMATION	JC	BR	AK	FW
002	04/05/22		NO	CHS	NOV	AJFS

Issue No: S2

SUITABLE FOR INFORMATION

TAYLOR WOODROW
together go VINCIS

ARUP **RAMECLL**

national highways

Project No: A358 TAUNTON TO SOUTHFIELDS DUALLING SCHEME

Drawing Title: ASHILL ROAD PLAN AND PROFILE SECTION 3/4 SHEET 2 OF 2

Issue No: 04/05/22

Issue Date: 04/05/22

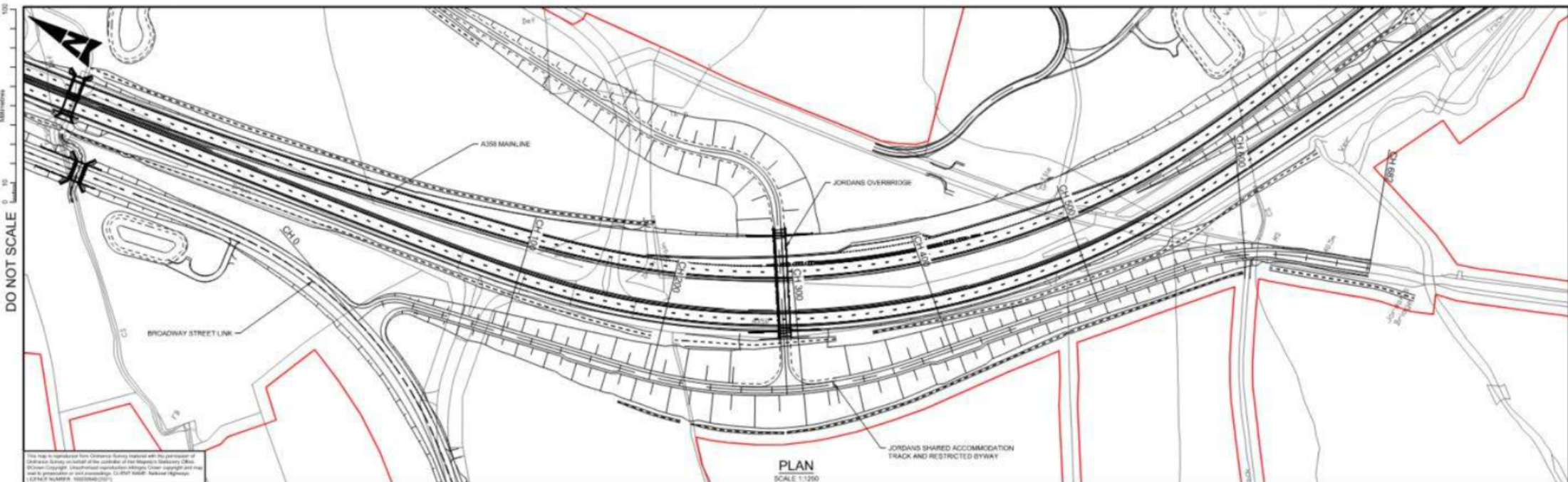
Issue Time: 04/05/22

Issue Location: 04/05/22

Issue Author: HE551508 - ARP - HSR

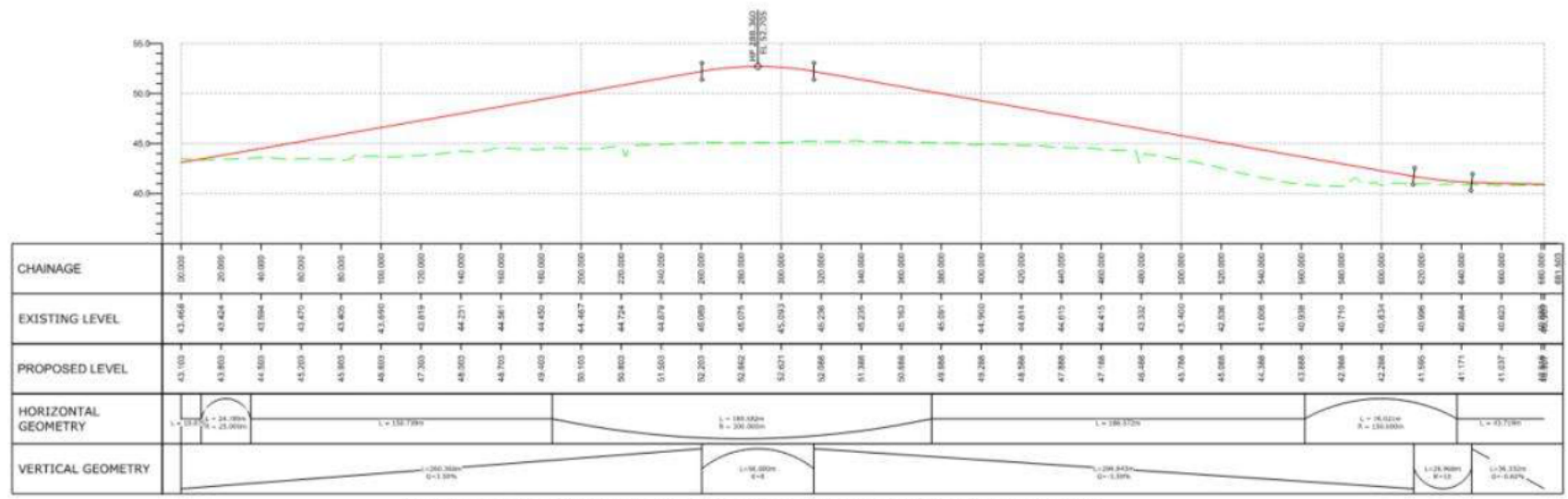
Issue Checker: SR_ASHILL_Z - DR - ZH - 000102

Issue Number: P01



This map is reproduced from Ordnance Survey material with the permission of Ordnance Survey on behalf of the Controller of Her Majesty's Stationery Office. © Crown Copyright. All rights reserved. No part of this publication may be reproduced or transmitted in any form or by any means, electronic, mechanical, photocopying, recording, or by any information storage or retrieval system, without the prior written permission of Ordnance Survey.

PLAN
SCALE 1:1250



JORDANS SHARED ACCOMMODATION TRACK AND RESTRICTED BYWAY - PROFILE
SCALE 1:1250 (1:2500)

LEGEND

- SCHEME BOUNDARY
- PROPOSED LEVELS
- EXISTING LEVELS

NOTES

- ALL DIMENSIONS ARE IN METRES UNLESS NOTED OTHERWISE.
- LINE Y-DIMENSIONS SHALL REFLECT TO HOR SCALE.
- THE DESIGN INFORMATION PRESENTED ON THIS DRAWING REPRESENTS AN EARLY PRELIMINARY DESIGN AND SHALL BE SUBJECT TO CHANGING REQUIREMENTS AND REQUIREMENTS.

SAFETY, HEALTH AND ENVIRONMENTAL INFORMATION

IN ADDITION TO THE HAZARDS NORMALLY ASSOCIATED WITH THE TYPES OF WORK DETAILED ON THIS DRAWING, NOTE THE FOLLOWING SPECIAL RESIDUAL RISKS/PRESENTATION SHALL ALSO BE MADE TO THE DESIGN HAZARD LOG:

CONSTRUCTION

MAINTENANCE / CLEANING

OPERATION

DECOMMISSIONING / DEMOLITION

NO.	DATE	DESCRIPTION	BY	CHKD	APPD	AUTH
001	04/05/22	ISSUED FOR INFORMATION	JC	MR	MR	MR
002						
003						
004						
005						
006						
007						
008						
009						
010						

REVISIONS

NO.	DATE	DESCRIPTION
S2		SUITABLE FOR INFORMATION

CLIENT

A358 TAUNTON TO SOUTHFIELDS DUALING SCHEME

DESIGNER

JORDANS OVERBRIDGE PLAN AND PROFILE SECTION 3/4 SHEET 2 OF 2

APPROVED

HE551508 - ARP - HSR
OB_13440 - DR - ZH - 000102

LOGO

TAYLOR WOODROW
together go VINCI

ARUP RAMBOLL

national highways

PROJECT

HE551508 - ARP - HSR
OB_13440 - DR - ZH - 000102

DATE

04/05/22

SCALE

1:1250

NO.

P01

Appendix 7.24e

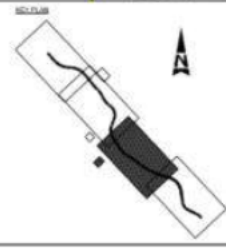
Walking, cycling and horse-riding including disabled user drawings

DO NOT SCALE



1:10000
 0 10 20 30 40 50 60 70 80 90 100
 METRES

- LEGEND**
- EXISTING FOOTPATHS
 - EXISTING CYCLE ROUTES
 - EXISTING RESTRICTED BYWAY
 - EXISTING BENEVOLENT CYCLE ROUTES
 - EXISTING TYPICAL CYCLE ROUTES
 - PROPOSED FOOTPATHS/STAIRS
 - PROPOSED RESTRICTED BYWAY
 - PROPOSED BENEVOLENT CYCLE ROUTES
 - PROPOSED TYPICAL CYCLE ROUTES
 - PROPOSED SPUR/ACCESSWAYS
 - SCHEME BOUNDARY



SAFETY, HEALTH AND ENVIRONMENTAL INFORMATION

DESCRIPTION	TO BE POPULATED
HAZARDOUS SUBSTANCES	
CONTAMINATION	
ASBESTOS	
ARCHAEOLOGICAL REMAINS	
ENVIRONMENTAL CONSTRAINTS	
OTHER CONSTRAINTS	

NO.	DATE	DESCRIPTION	BY	CHKD	REV	APPD

ARUP **RAMBOLL**

TAYLOR WOODROW
 together with VINCI

national highways

S2 SUITABLE FOR INFORMATION

A358 TAUNTON TO SOUTHFIELDS DUALLING SCHEME

WALKING, CYCLING AND HORSE RIDING STRATEGY SECTION 3 BICKENHILL LANE TO ASHILL

1:10000

DATE	BY	CHKD	REV	APPD
10/05/22	AT			
10/05/22				
10/05/22				
10/05/22				

HE551508 - ARP - ENM
 ML_A358_Z -DR -ZH -000003

P01

