

- Notes**
1. PROPOSAL SHOWN ON THIS DRAWING HAVE BEEN DEVELOPED FOR PCF STAGE 1 - OPTION IDENTIFICATION AND PCF STAGE 2 - OPTION SELECTION, AND AS SUCH HAVE BEEN DONE TO A HIGH LEVEL OF DESIGN ONLY. ENGINEERING LAYOUTS ARE ILLUSTRATIVE ONLY.
 2. ADDITIONAL ENVIRONMENTAL DESIGNATIONS ARE WITHIN THE STUDY AREA BUT HAVE NOT BEEN SHOWN HERE FOR CLARITY.

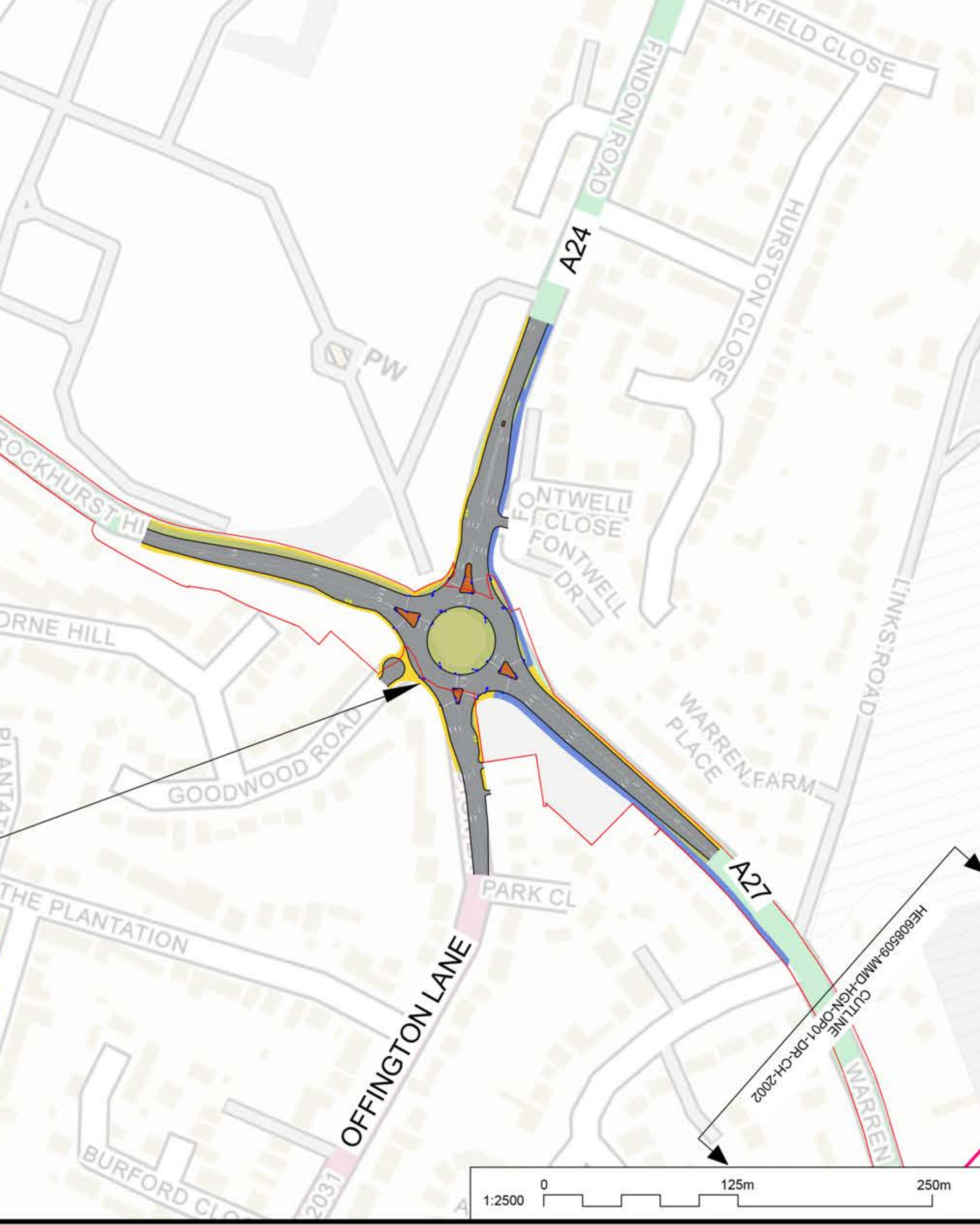
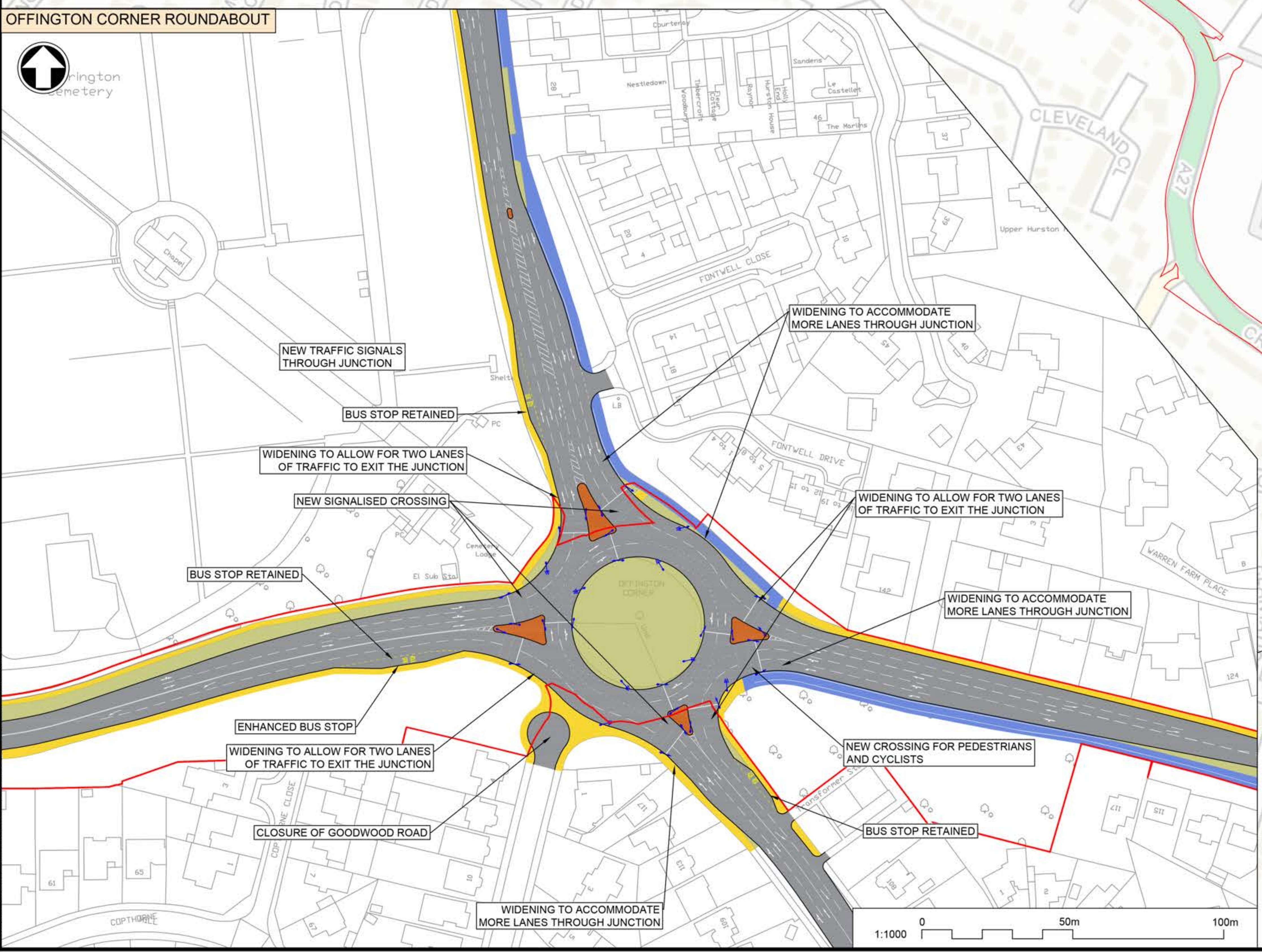
Key to symbols

INDICATIVE ENVIRONMENTAL AREA

- SOUTH DOWNS NATIONAL PARK

ILLUSTRATIVE ENGINEERING ARRANGEMENTS

- ROAD SURFACE
- CENTRAL RESERVES / ISLANDS
- FOOTWAY
- SHARED USE PATH
- PROPOSED GRASSLAND
- PUBLIC RIGHTS OF WAY
- INDICATIVE NATIONAL HIGHWAYS LAND BOUNDARY
- PROPOSED TRAFFIC SIGNAL



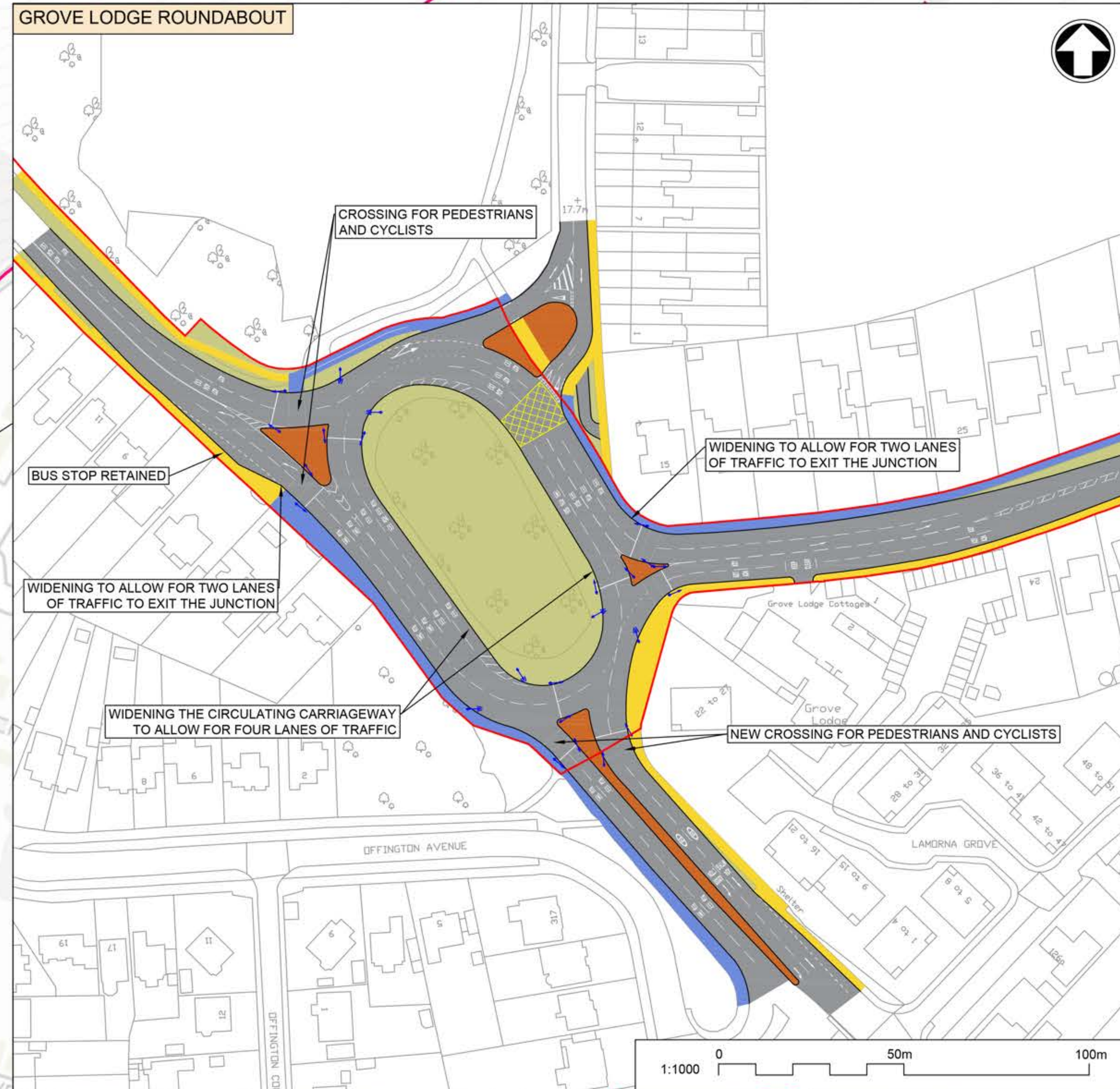
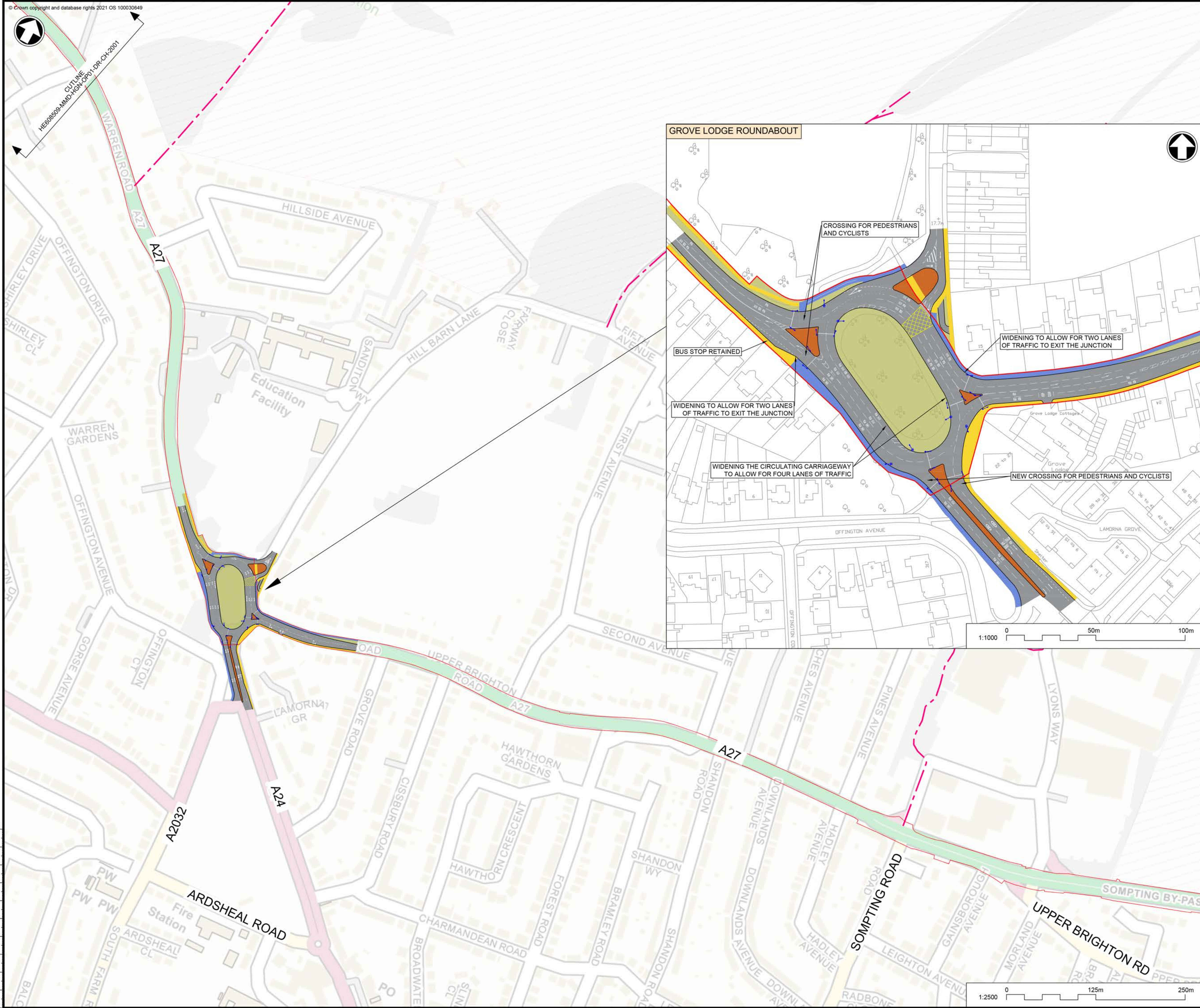
Client

Project Title

A27 WORTHING AND LANCING

Drawing Title

OPTION 1
A27 OFFINGTON CORNER ROUNDABOUT
SHEET 1 OF 2



Notes

1. PROPOSAL SHOWN ON THIS DRAWING HAVE BEEN DEVELOPED FOR PCF STAGE 1 - OPTION IDENTIFICATION AND PCF STAGE 2 - OPTION SELECTION, AND AS SUCH HAVE BEEN DONE TO A HIGH LEVEL OF DESIGN ONLY. ENGINEERING LAYOUTS ARE ILLUSTRATIVE ONLY.
2. ADDITIONAL ENVIRONMENTAL DESIGNATIONS ARE WITHIN THE STUDY AREA BUT HAVE NOT BEEN SHOWN HERE FOR CLARITY.

Key to symbols

INDICATIVE ENVIRONMENTAL AREA	
	SOUTH DOWNS NATIONAL PARK
ILLUSTRATIVE ENGINEERING ARRANGEMENTS	
	ROAD SURFACE
	CENTRAL RESERVES / ISLANDS
	FOOTWAY
	SHARED USE PATH
	PROPOSED GRASSLAND
	PUBLIC RIGHTS OF WAY
	INDICATIVE NATIONAL HIGHWAYS LAND BOUNDARY
	PROPOSED TRAFFIC SIGNAL

00
06
08
07
09
05
04
03
02
01

Client
 national highways

Project Title
A27 WORTHING AND LANCING

Drawing Title
**OPTION 1
 A27 GROVE LODGE ROUNDABOUT
 SHEET 2 OF 2**

