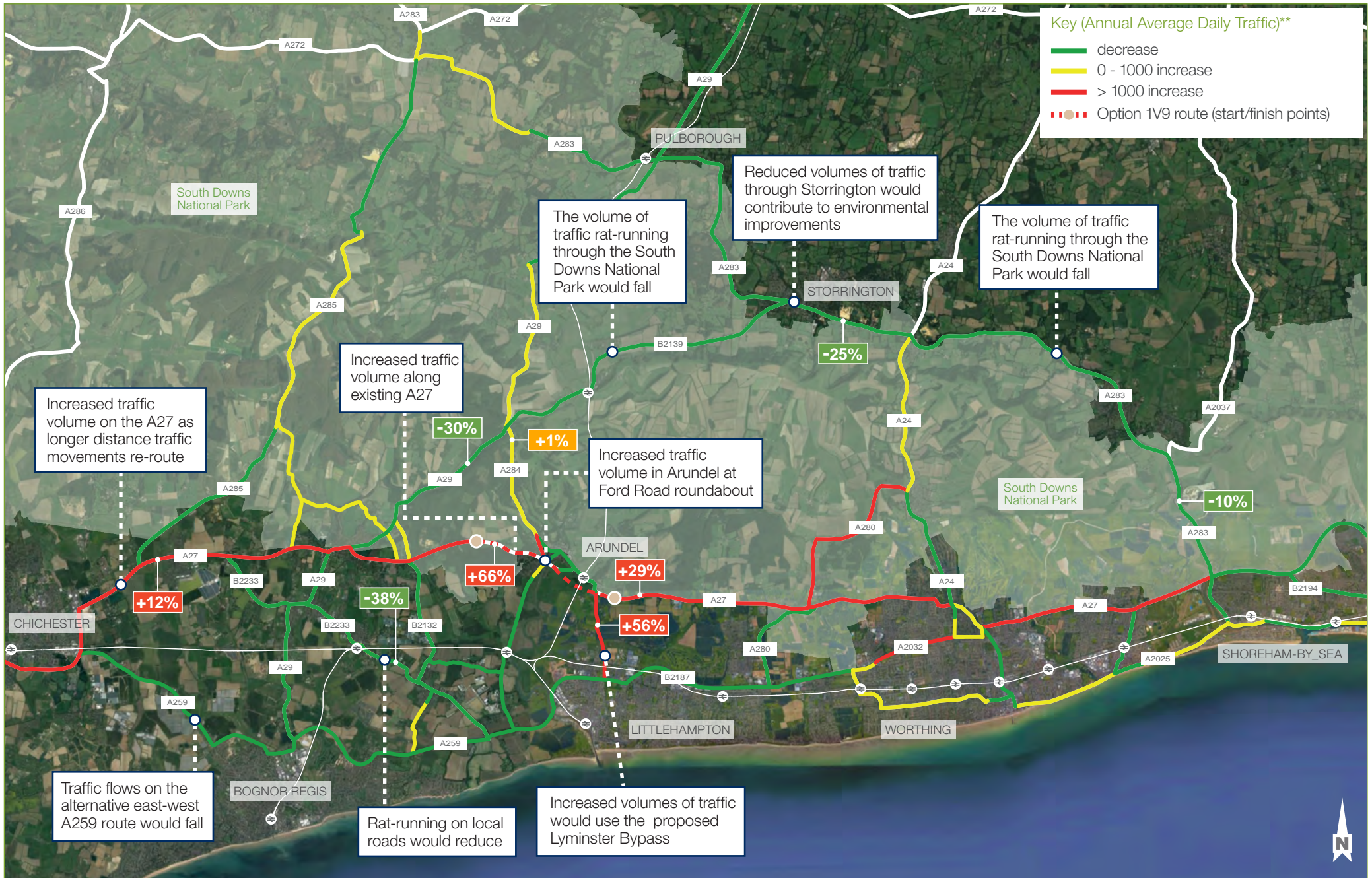


A27

Arundel Bypass

Traffic heat maps

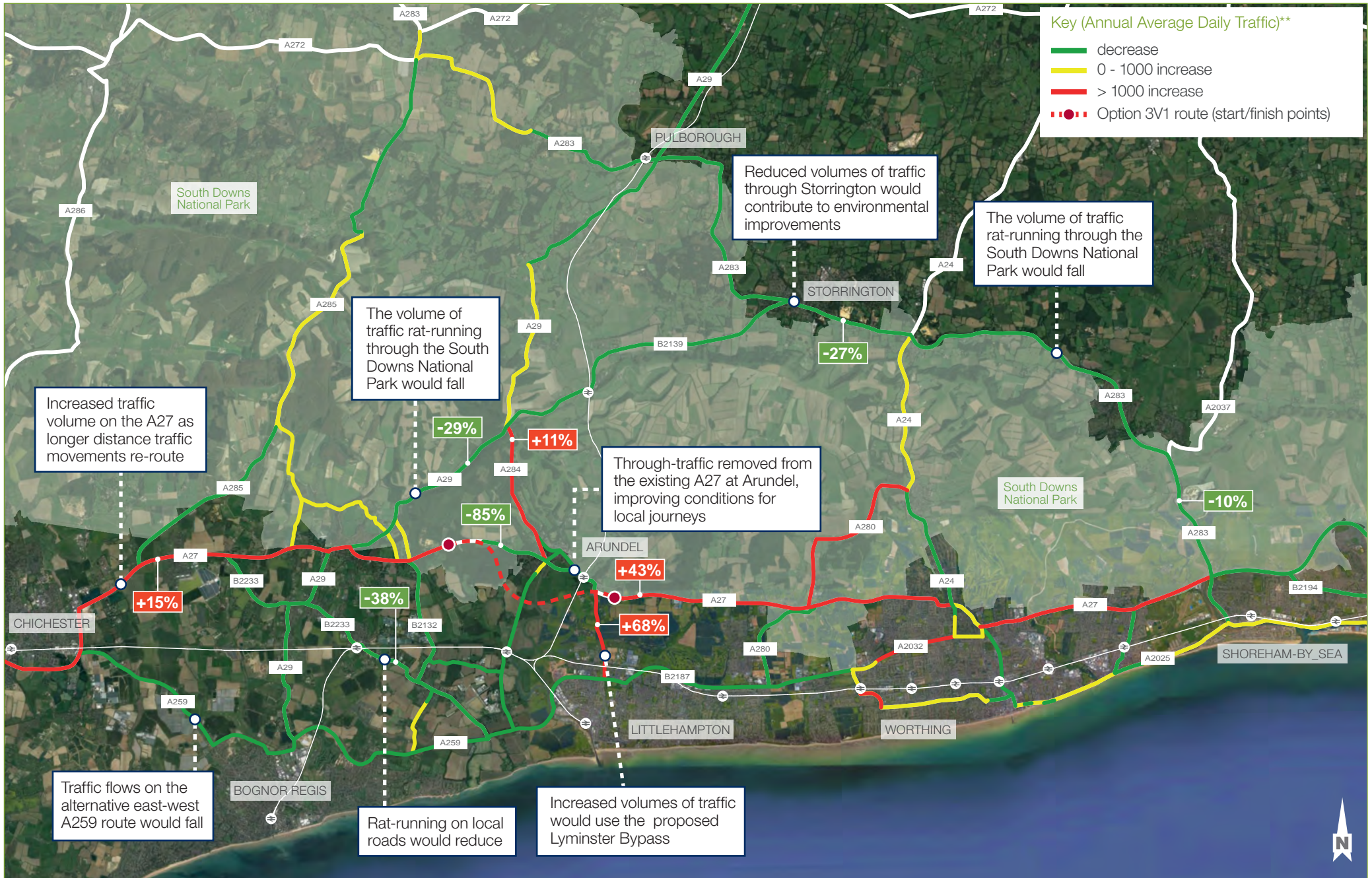
Change in traffic in 2041 compared to 'Do minimum'*: Beige (Option 1V9)



This map is a diagrammatic representation. Not to scale.
 ©Google Maps 2018; Data SIO, NOAA, U.S. Navy, NGA, GEBCO

*'Do minimum' refers to a scenario whereby the Arundel Bypass would not go ahead, but other improvements would be made elsewhere.
 **Annual Average Daily Traffic - the daily total flow of vehicles (in both directions) averaged across the year.

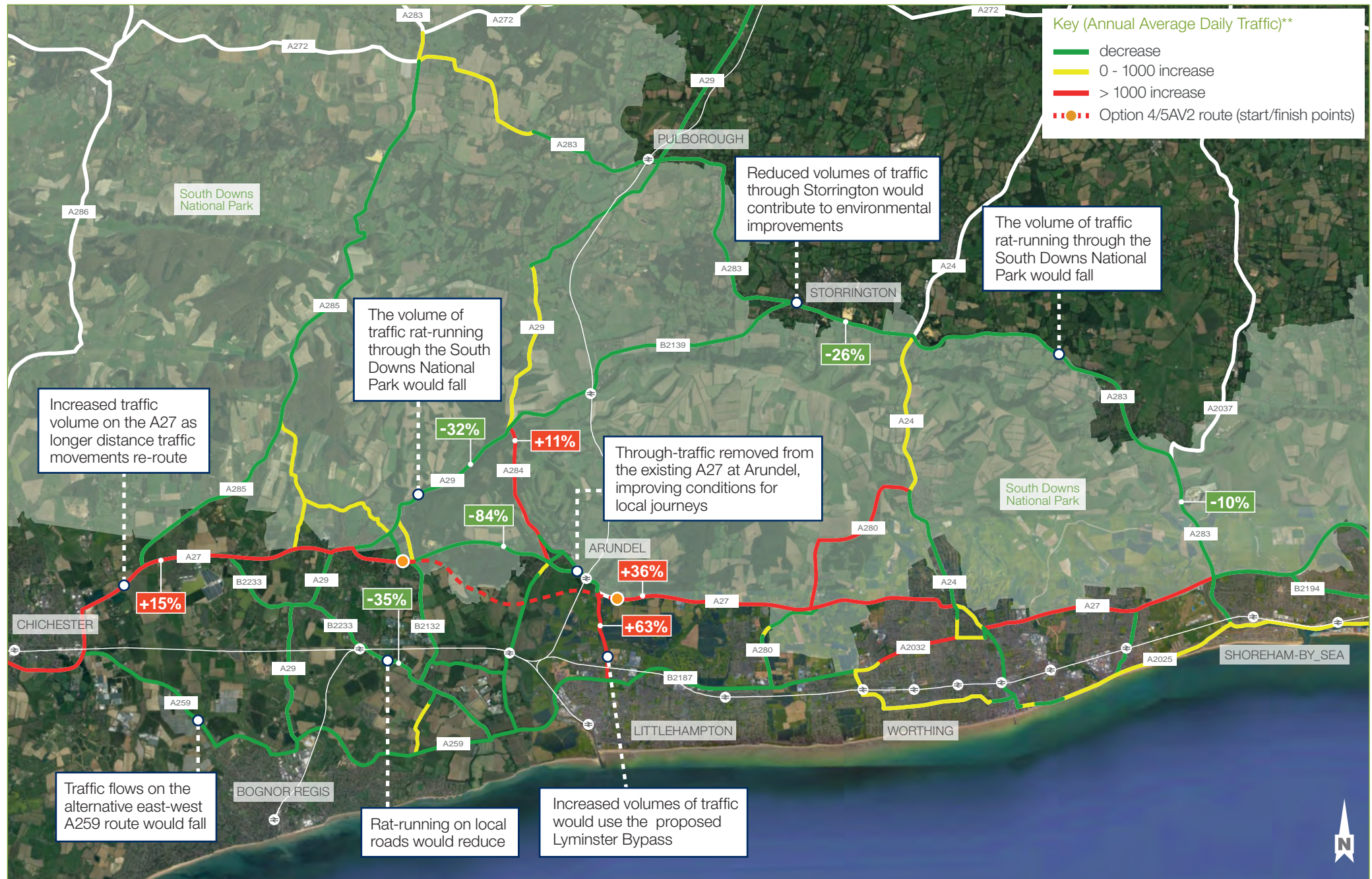
Change in traffic in 2041 compared to 'Do minimum'*: Crimson (Option 3V1)



This map is a diagrammatic representation. Not to scale.
 ©Google Maps 2018: Data SIO, NOAA, U.S. Navy, NGA, GEBCO

*'Do minimum' refers to a scenario whereby the Arundel Bypass would not go ahead, but other improvements would be made elsewhere.
 **Annual Average Daily Traffic - the daily total flow of vehicles (in both directions) averaged across the year.

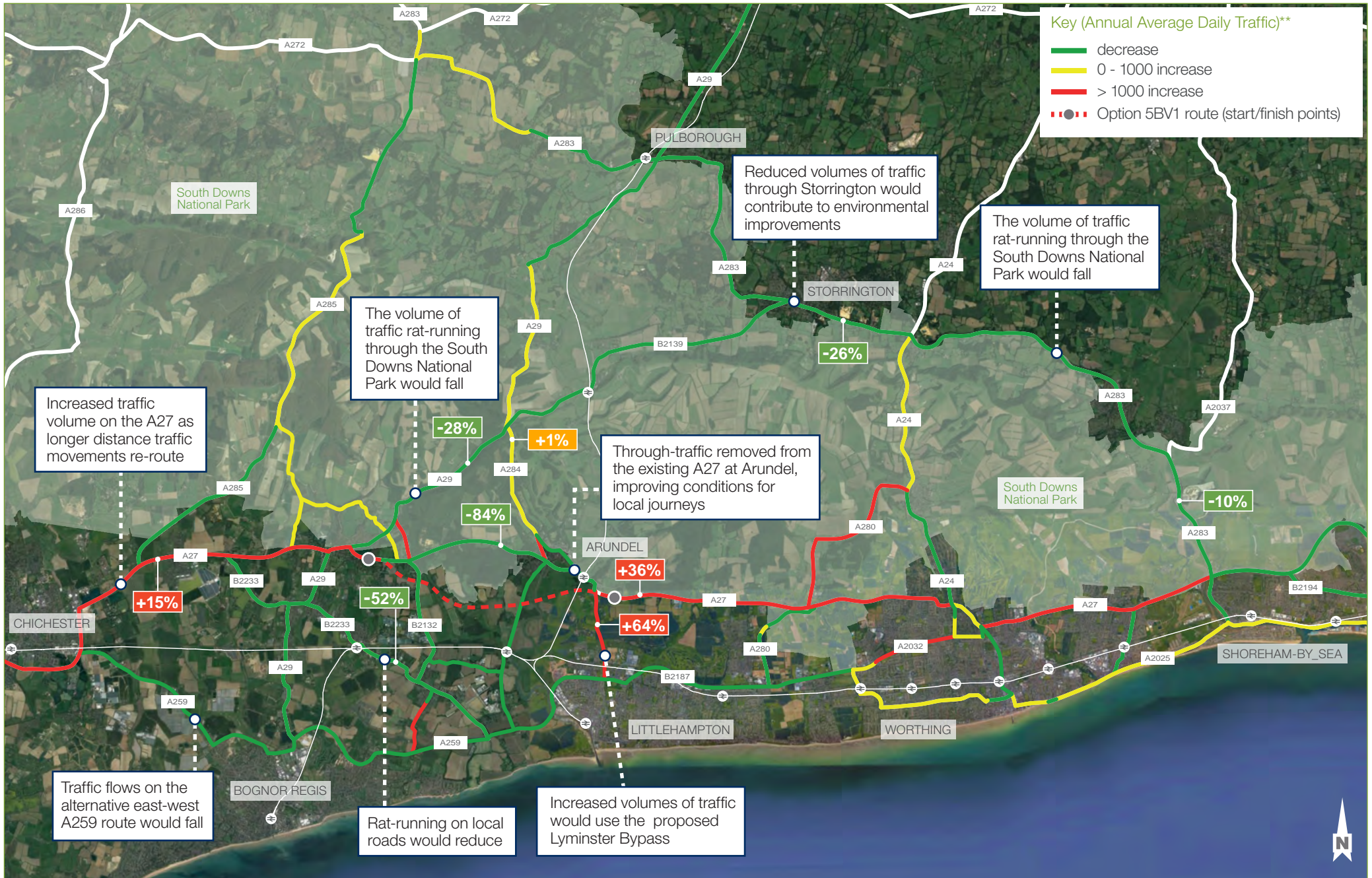
Change in traffic in 2041 compared to 'Do minimum'*: Amber (Option 4/5AV2)



This map is a diagrammatic representation. Not to scale.
 ©Google Maps 2018: Data SIO, NOAA, U.S. Navy, NGA, GEBCO

*'Do minimum' refers to a scenario whereby the Arundel Bypass would not go ahead, but other improvements would be made elsewhere.
 **Annual Average Daily Traffic - the daily total flow of vehicles (in both directions) averaged across the year.

Change in traffic in 2041 compared to 'Do minimum'*: Grey (Option 5BV1)



This map is a diagrammatic representation. Not to scale.
 ©Google Maps 2018: Data SIO, NOAA, U.S. Navy, NGA, GEBCO

*'Do minimum' refers to a scenario whereby the Arundel Bypass would not go ahead, but other improvements would be made elsewhere.
 **Annual Average Daily Traffic - the daily total flow of vehicles (in both directions) averaged across the year.

