

# **A2 Bean and Ebbsfleet Junction Improvements**

## **Environmental Assessment Report (EAR)**

### **Volume 2**

### **Figures**

#### **Contents:**

#### **PART 1**

- 1.1 Location Plan
- 2.1 Scheme Option Layout - Bean Junction Option 3
- 2.2 Scheme Option Layout - Bean Junction Option 4b
- 2.3 Scheme Option Layout - Bean Junction Option 5
- 2.4 Scheme Option Layout- Ebbsfleet Junction Option 1b
- 4.1 Cumulative Assessment
- 5.1 Statutory and Non-Statutory Wildlife Sites
- 5.2 Phase 1 Habitat Survey Map

#### **PART 2**

- 5.3 Ecological Constraints Map
- 6.1 Environmental Designations
- 6.2 Access Land and Public Rights of Way
- 6.3 Topography Map
- 6.4 National Character areas

6.5 Regional Landscape Character Areas

6.6 Local Landscape Character Areas

### **PART 3**

6.7 Zone of Theoretical Visibility

6.8 Potential Viewpoint Location

6.9 Photosheets 2x

7.1 Air Quality Baseline

### **PART 4**

7.2 Bean Option 3 Study Area

7.3 Bean Option 4b Study Area

7.4 Bean Option 5 Study Area

8.1 Noise Important Areas within the Study Area

9.1 Statutory and Non-Statutory Cultural Heritage Assets at Bean Option 3

9.2 Statutory and Non-Statutory Cultural Heritage Assets at Bean Option 4b

9.3 Statutory and Non-Statutory Cultural Heritage Assets at Bean Option 5

9.4 Statutory and Non-Statutory Cultural Heritage Assets at Ebbsfleet Option 1b

### **PART 5**

10.1 Superficial deposits Geology plan

10.2 Solid Geology plan

10.3 Superficial Aquifer designations

10.4 Bedrock Aquifer designations

10.5 Source Protection Zones

10.6 Aquifer Vulnerability

10.7 Contaminative Land Uses

### **PART 6**

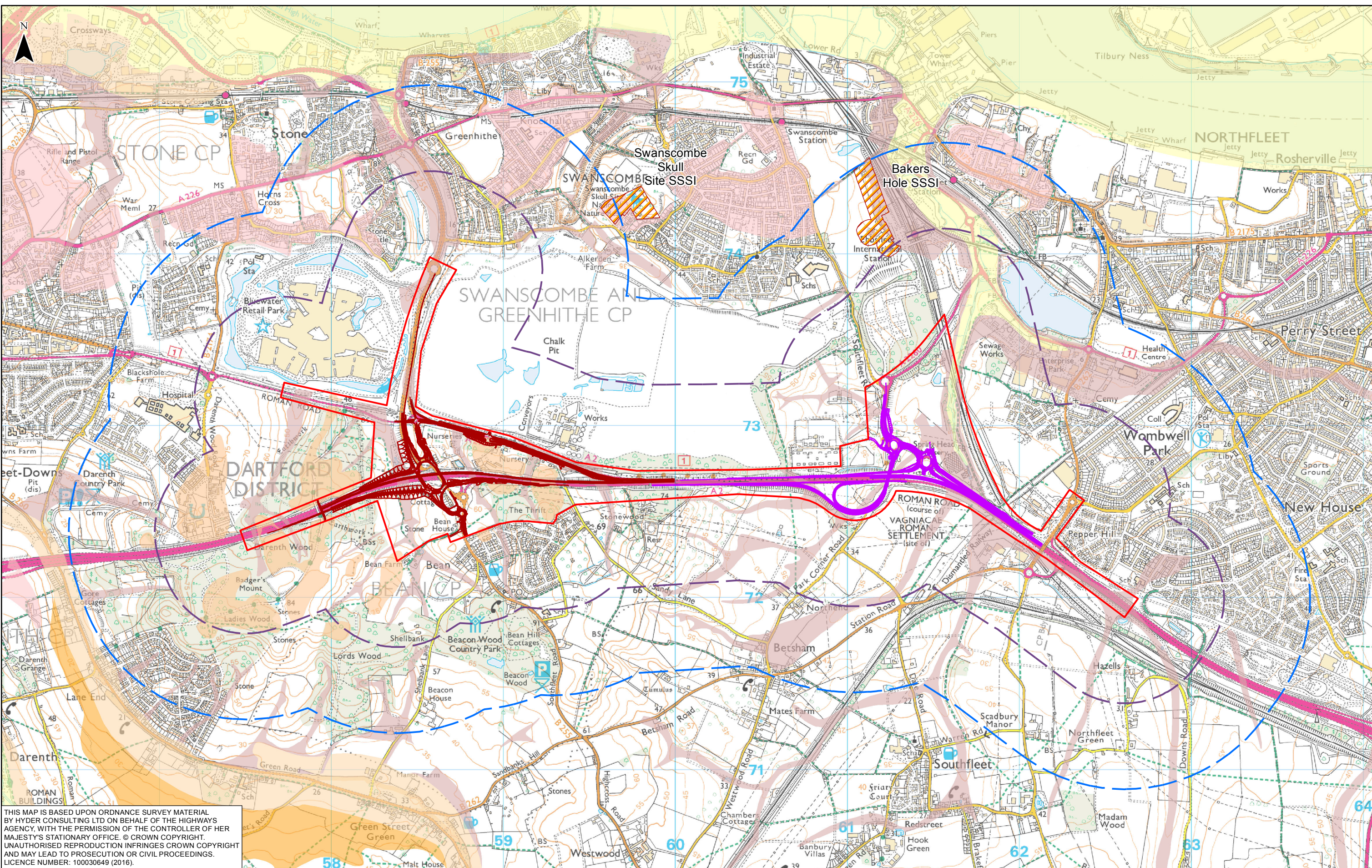
10.8 Surface water features

10.9 Existing Drainage

- 11.1 Study Area
- 11.2 Community Facilities
- 11.3 Residential Properties
- 11.4 Commercial Properties - Bean
- 11.5 Commercial Properties - Ebbsfleet
- 11.6 Public Rights of Way
- 11.7 Development Land
- 11.8 Agricultural Land



Path: I:\GIS\A2 Bean to Ebbsfleet Environmental Appraisal Report - GIS Figures\Road Drainage and the Water Environment\001-UA006811-02\_Fig10.1\_Superficial deposits Geology plan.mxd



THIS MAP IS BASED UPON ORDNANCE SURVEY MATERIAL BY HYDER CONSULTING LTD ON BEHALF OF THE HIGHWAYS AGENCY, WITH THE PERMISSION OF THE CONTROLLER OF HER MAJESTY'S STATIONARY OFFICE. © CROWN COPYRIGHT. UNAUTHORISED REPRODUCTION INFRINGES CROWN COPYRIGHT AND MAY LEAD TO PROSECUTION OR CIVIL PROCEEDINGS. LICENCE NUMBER: 100030649 (2016).

0	0.5	1	Kilometers		
P02	24/11/2016	FINAL	SD	GS	NM
P01	24/08/2016	FINAL DRAFT FOR APPROVAL	SD	GS	NM
Rev	Rev. Date	Purpose of revision	Drawn	Checked	Apprv'd

	SCHEME LIMIT		ALLUVIUM-SILT		LYNCH HILL GRAVEL MEMBER-SAND AND GRAVEL
	STUDY AREA, 500M OFFSET		BOYN HILL GRAVEL MEMBER-SAND AND GRAVEL		RIVER TERRACE DEPOSITS (UNDIFFERENTIATED)-SAND AND GRAVEL
	STUDY AREA, 1000M OFFSET		BLACK PARK GRAVEL MEMBER-SAND AND GRAVEL		TAPLOW GRAVEL FORMATION-SAND AND GRAVEL
	EBBSFLEET OPTION 1B		HEAD-CLAY		TIDAL RIVER OR CREEK DEPOSITS-SILT
	BEAN OPTION 3		HEAD-SAND AND CLAY		
	SITE OF SPECIAL SCIENTIFIC INTEREST-SSSI				

**highways**  
england

**Halcrow Hyder Joint Venture**  
Burdorp Park  
Swindon, SN4 0DD  
Tel. +44(0)1793 812479

**Halcrow** **Hyder**

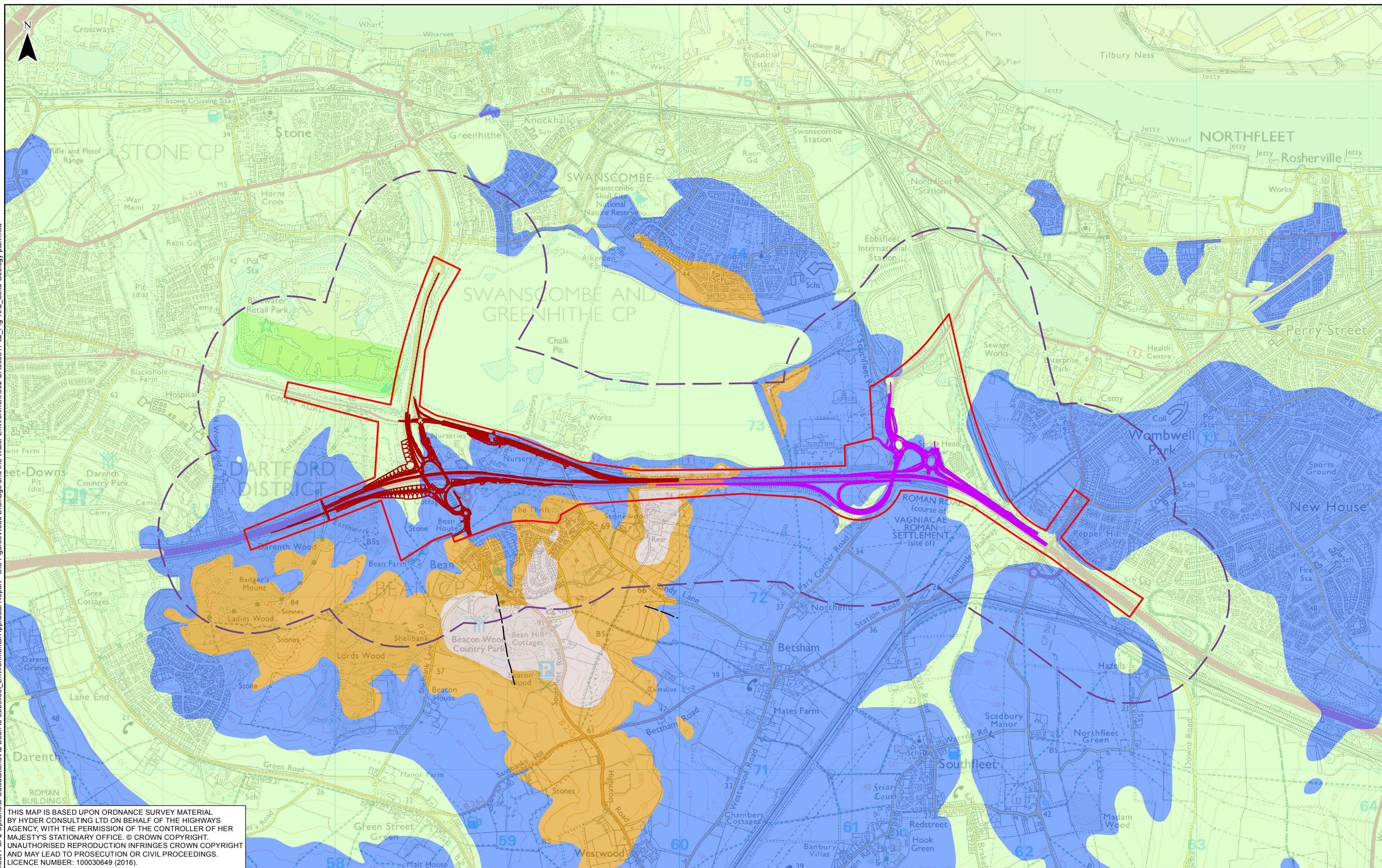
Project: A2 BEAN AND EBBSFLEET JUNCTION IMPROVEMENTS

Drawing title: **FIGURE 10.1 SUPERFICIAL DEPOSITS GEOLOGY PLAN**

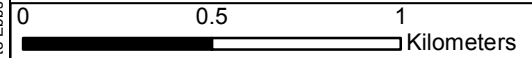
Status	FINAL	Revision	P02
Scale	1:20,000	Date	24/11/2016
Drawn By	SD		
Checked By	GS		
Approved By	NM		
Project No.	HA543917	Originator	HHJV
Original Size			A3
Drawing number	HA543917-HHJV-EGN-ZZZZ-GIS-EN-0028		



Path: I:\GIS\A2 Bean to Ebbsfleet\_PCF2 Options\A2 Bean to Ebbsfleet\_Environmental Appraisal Report - GIS Figures\Road Drainage and the Water Environment\002-UA006811-02\_Fig 10.2\_Solid Geology plan.mxd



THIS MAP IS BASED UPON ORDNANCE SURVEY MATERIAL BY HYDER CONSULTING LTD ON BEHALF OF THE HIGHWAYS AGENCY, WITH THE PERMISSION OF THE CONTROLLER OF HER MAJESTY'S STATIONARY OFFICE. © CROWN COPYRIGHT. UNAUTHORISED REPRODUCTION INFRINGES CROWN COPYRIGHT AND MAY LEAD TO PROSECUTION OR CIVIL PROCEEDINGS. LICENCE NUMBER: 100030649 (2016).



KEY		CHALK GROUP-CHALK		LAMBETH GROUP-SAND AND CLAY	
	SCHEME LIMIT		CHALK GROUP-CHALK		LAMBETH GROUP-SAND AND CLAY
	STUDY AREA, 500M OFFSET		HARWICH FORMATION-GRAVEL		SEAFORD CHALK FORMATION-CHALK
	EBBSFLEET OPTION 1B		LONDON CLAY FORMATION-CLAY		THANET SAND FORMATION-SAND
	BEAN OPTION 3		LEWES NODULAR CHALK FORMATION-CHALK		
	INFERRED NORMAL FAULT				

**highways**  
england

**Halcrow Hyder Joint Venture**  
Burdorp Park  
Swindon, SN4 0OD  
Tel. +44(0)1793 812479

Project: A2 BEAN AND EBBSFLEET JUNCTION IMPROVEMENTS

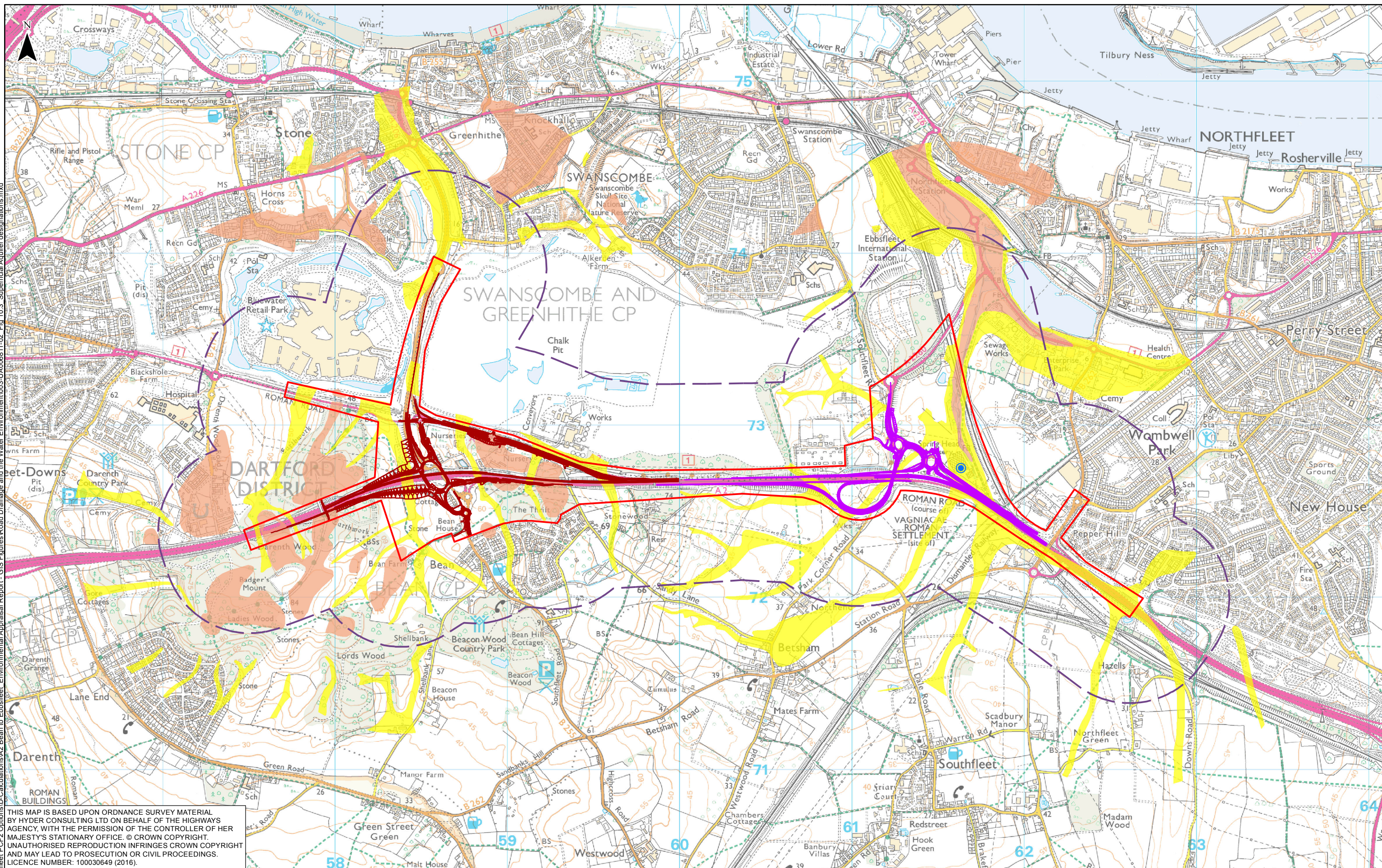
Drawing title: **FIGURE 10.2 SOLID GEOLOGY PLAN**

Status	FINAL	P02
Scale	1:20,000	Date 24/11/2016
Drawn By	SD	
Checked By	GS	
Approved By	NM	
Project No.	HA543917	Originator HHJV Original Size A3
Drawing number	HA543917-HHJV-EGN-ZZZZ-GIS-EN-0029	

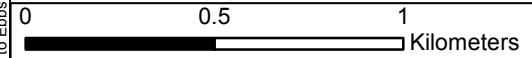
Rev	Rev. Date	Purpose of revision	Drawn	Checkd	Apprv'd
P02	24/11/2016	FINAL	SD	GS	NM
P01	17/08/2016	FINAL DRAFT FOR APPROVAL	SD	GS	NM



Path: \\C:\S\A2 Bean to Ebbsfleet\_PCF2 Options\Calculations\A2 Bean to Ebbsfleet Environmental Appraisal Report - GIS Figures\Road Drainage and the Water Environment\003-UA006811-02\_Fig 10.3 Superficial Aquifer Designations.mxd



THIS MAP IS BASED UPON ORDNANCE SURVEY MATERIAL BY HYDER CONSULTING LTD ON BEHALF OF THE HIGHWAYS AGENCY, WITH THE PERMISSION OF THE CONTROLLER OF HER MAJESTY'S STATIONARY OFFICE. © CROWN COPYRIGHT. UNAUTHORISED REPRODUCTION INFRINGES CROWN COPYRIGHT AND MAY LEAD TO PROSECUTION OR CIVIL PROCEEDINGS. LICENCE NUMBER: 100030649 (2016).



KEY		SECONDARY AQUIFER - A
<span style="border: 1px solid red; display: inline-block; width: 10px; height: 10px;"></span>	SCHEME LIMIT	<span style="background-color: orange; display: inline-block; width: 10px; height: 10px;"></span>
<span style="border: 1px dashed purple; display: inline-block; width: 10px; height: 10px;"></span>	STUDY AREA, 500M OFFSET	<span style="background-color: yellow; display: inline-block; width: 10px; height: 10px;"></span>
<span style="border-bottom: 1px solid red; display: inline-block; width: 10px;"></span>	BEAN OPTION 3	
<span style="border-bottom: 1px dashed purple; display: inline-block; width: 10px;"></span>	EBBSFLEET OPTION 1B	
<span style="color: blue;">●</span>	GROUP OF SPRINGS	

**highways**  
england

**Halcrow Hyder Joint Venture**  
Burdorpp Park  
Swindon, SN4 0OD  
Tel. +44(0)1793 812479

Project: **A2 BEAN AND EBBSFLEET JUNCTION IMPROVEMENTS**

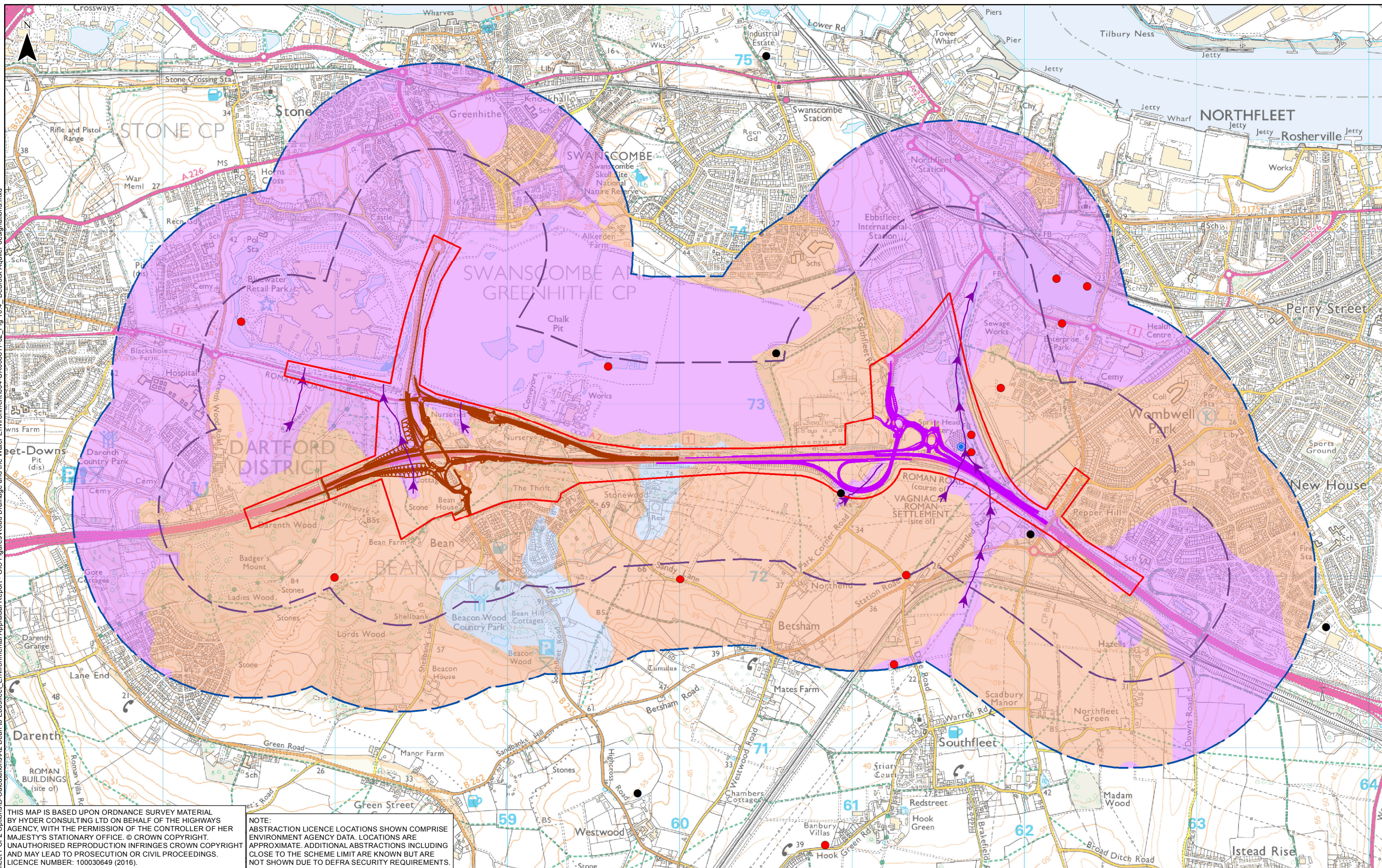
Drawing title: **FIGURE 10.3 SUPERFICIAL AQUIFER DESIGNATIONS**

Status	FINAL	Revision	P02
Scale	1:20,000	Date	24/11/2016
Drawn By	SD		
Checked By	GS		
Approved By	NM		
Project No.	HA543917	Originator	HHJV
Drawing number	HA543917-HHJV-EGN-ZZZZ-GIS-EN-0030	Original Size	A3

Rev	Rev. Date	Purpose of revision	Drawn	Checked	Appr'd
P02	24/11/2016	FINAL	SD	GS	NM
P01	24/08/2016	FINAL DRAFT FOR APPROVAL	SD	GS	NM



Path: \\C:\SIA2\Bean to Ebbsfleet PCF2 Options\D-Calculations\A2 Bean to Ebbsfleet Environmental Appraisal Report - GIS Figures\Road Drainage and the Water Environment\004-UA006811-02\_Fig 10.4\_Bedrock Aquifer designations.mxd



THIS MAP IS BASED UPON ORDNANCE SURVEY MATERIAL BY HYDER CONSULTING LTD ON BEHALF OF THE HIGHWAYS AGENCY, WITH THE PERMISSION OF THE CONTROLLER OF HER MAJESTY'S STATIONARY OFFICE. © CROWN COPYRIGHT. UNAUTHORISED REPRODUCTION INFRINGES CROWN COPYRIGHT AND MAY LEAD TO PROSECUTION OR CIVIL PROCEEDINGS. LICENCE NUMBER: 100030649 (2016).

NOTE: ABSTRACTION LICENCE LOCATIONS SHOWN COMPRISE ENVIRONMENT AGENCY DATA. LOCATIONS ARE APPROXIMATE. ADDITIONAL ABSTRACTIONS INCLUDING CLOSE TO THE SCHEME LIMIT ARE KNOWN BUT ARE NOT SHOWN DUE TO DEFRA SECURITY REQUIREMENTS.

0		0.5		1	
Kilometers					
P02	24/11/2016	FINAL	SD	GS	NM
P01	25/08/2016	FINAL DRAFT FOR APPROVAL	SD	GS	NM
Rev	Rev. Date	Purpose of revision	Drawn	Checked	Appr'd

	SCHEME LIMIT		DISCHARGES TO GROUND
	STUDY AREA, 500M OFFSET		GROUNDWATER ABSTRACTION
	STUDY AREA, 1000M OFFSET		GROUP OF SPRINGS
	EBBSFLEET OPTION 1B		DRY VALLEYS (APPROXIMATE)
	BEAN OPTION 3		

	PRINCIPAL AQUIFER
	SECONDARY AQUIFER-A
	UNPRODUCTIVE STRATA

**highways**  
england

**Halcrow Hyder Joint Venture**  
Burdorp Park  
Swindon, SN4 0DD  
Tel. +44(0)1793 812479

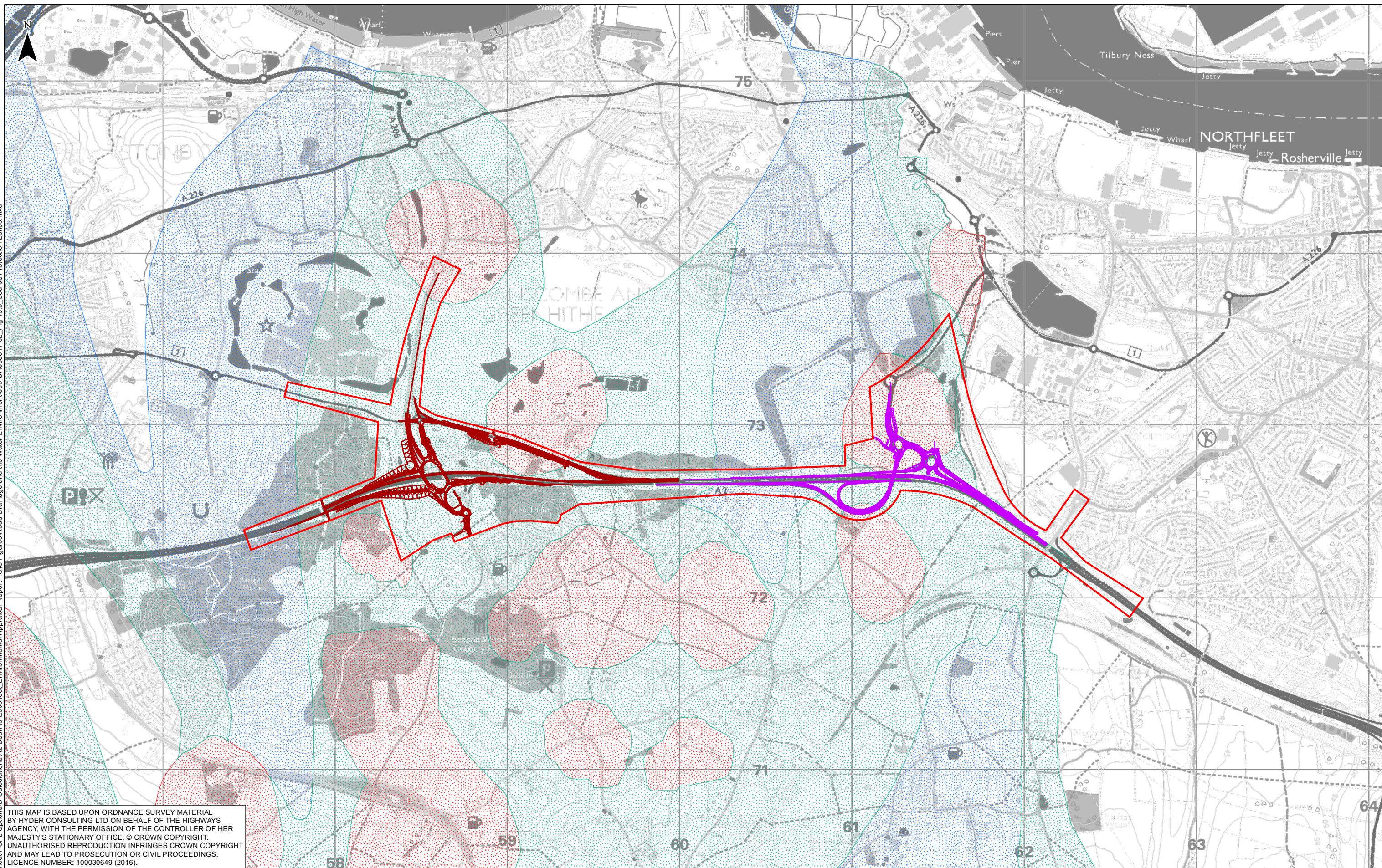
Project: A2 BEAN AND EBBSFLEET JUNCTION IMPROVEMENTS

Drawing title: **FIGURE 10.4 BEDROCK AQUIFER DESIGNATIONS**

Status	FINAL	Revision	P02
Scale	1:20,000	Date	24/11/2016
Drawn By	SD		
Checked By	GS		
Approved By	NM		
Project No.	HA543917	Originator	HHJV
Drawing number	HA543917-HHJV-EGN-ZZZZ-GIS-EN-0031	Original Size	A3



Path: \\C:\SIA2 Bean to Ebbsfleet PC\2 Options\D-Calculations\A2 Bean to Ebbsfleet Environmental Appraisal Report - GIS Figures\Road Drainage and the Water Environment\005-UA006811-02\_Fig 10.5 Source Protection Zones.mxd



THIS MAP IS BASED UPON ORDNANCE SURVEY MATERIAL BY HYDER CONSULTING LTD ON BEHALF OF THE HIGHWAYS AGENCY, WITH THE PERMISSION OF THE CONTROLLER OF HER MAJESTY'S STATIONARY OFFICE. © CROWN COPYRIGHT. UNAUTHORISED REPRODUCTION INFRINGES CROWN COPYRIGHT AND MAY LEAD TO PROSECUTION OR CIVIL PROCEEDINGS. LICENCE NUMBER: 100030649 (2016).

0 0.5 1 Kilometers					
P02	24/11/2016	FINAL	SD	GS	NM
P01	24/08/2016	FINAL DRAFT FOR APPROVAL	SD	GS	NM
Rev	Rev. Date	Purpose of revision	Drawn	Checked	Apprv'd

	SCHEME LIMIT
	EBBSFLEET OPTION 1B
	SPZ 1 - INNER ZONE
	SPZ 2 - OUTER PROTECTION ZONE
	SPZ 3 - TOTAL CATCHMENT

**highways**  
england

**Halcrow Hyder Joint Venture**  
Burdorpe Park  
Swindon, SN4 0OD  
Tel. +44(0)1793 812479

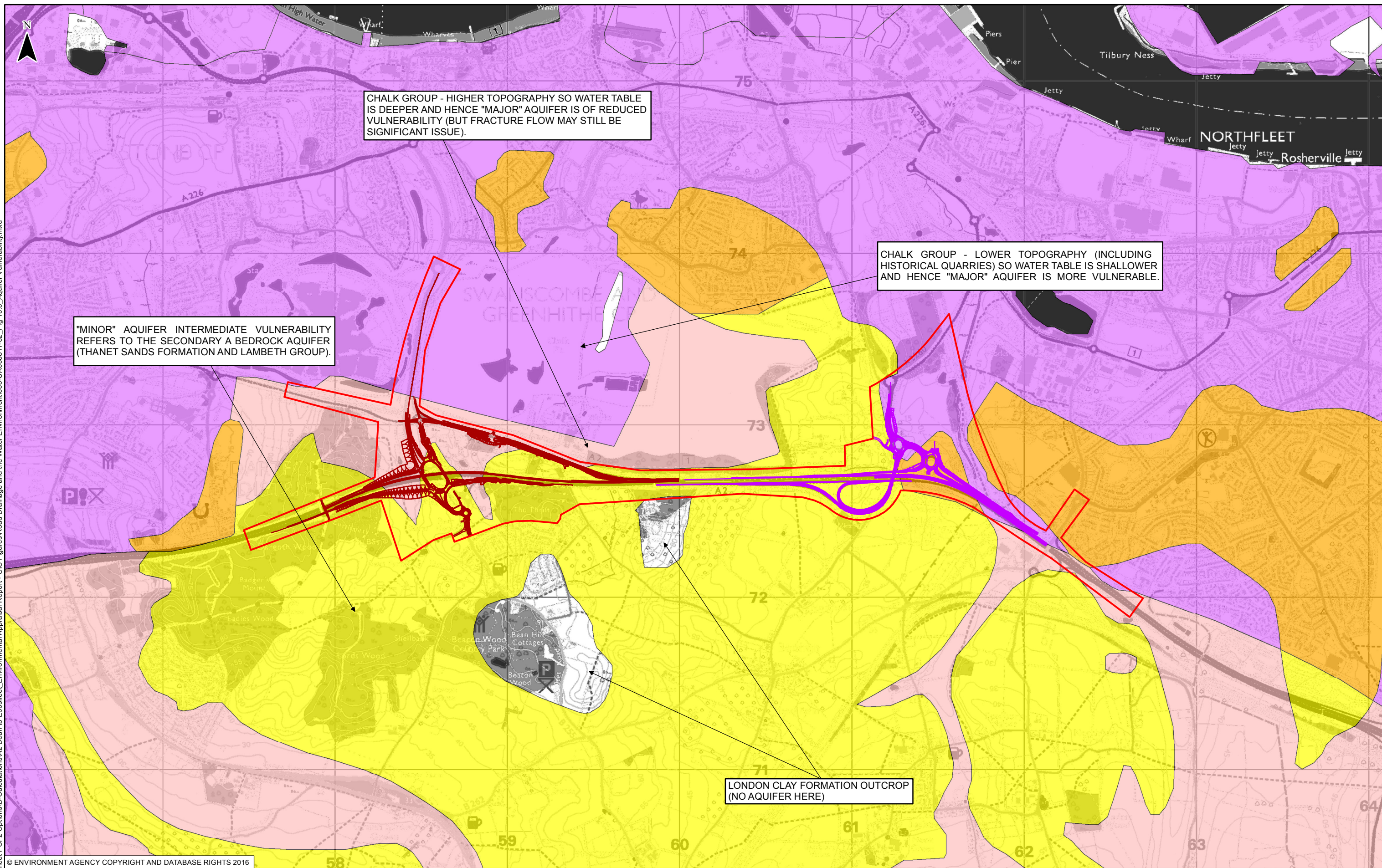
Project: A2 BEAN AND EBBSFLEET JUNCTION IMPROVEMENTS

Drawing title: **FIGURE 10.5 SOURCE PROTECTION ZONES**

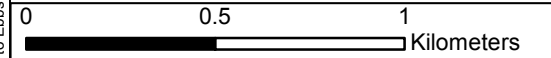
Status	FINAL	Revision	P02
Scale	1:20,000	Date	24/11/2016
Drawn By	SD		
Checked By	GS		
Approved By	NM		
Project No.	HA543917	Originator	HHJV
Drawing number	HA543917-HHJV-EGN-ZZZZ-GIS-EN-0034	Original Size	A3



Path: \\C:\S\A2 Bean to Ebbsfleet PCF2 Options\A2 Bean to Ebbsfleet Environmental Appraisal Report - GIS Figures\Road Drainage and the Water Environment\006-JA006811-02\_Fig 10.6\_Aquifer Vulnerability.mxd



© ENVIRONMENT AGENCY COPYRIGHT AND DATABASE RIGHTS 2016



Rev	Rev. Date	Purpose of revision	Drawn	Checked	Appr'd
P02	24/11/2016	FINAL	SD	GS	NM
P01	25/08/2016	FINAL DRAFT FOR APPROVAL	SD	GS	NM

KEY		AQUIFER VULNERABILITY ZONES	
<span style="border: 1px solid red; display: inline-block; width: 10px; height: 10px;"></span>	SCHEME LIMIT	<span style="background-color: #ccccff; border: 1px solid black; display: inline-block; width: 10px; height: 10px;"></span>	MAJOR AQUIFER HIGH
<span style="border: 1px solid purple; display: inline-block; width: 10px; height: 10px;"></span>	EBBSFLEET OPTION 1B	<span style="background-color: #ffcccc; border: 1px solid black; display: inline-block; width: 10px; height: 10px;"></span>	MAJOR AQUIFER INTERMEDIATE
<span style="border: 1px solid blue; display: inline-block; width: 10px; height: 10px;"></span>	BEAN OPTION 3	<span style="background-color: #ffcc99; border: 1px solid black; display: inline-block; width: 10px; height: 10px;"></span>	MINOR AQUIFER HIGH
		<span style="background-color: #ffff99; border: 1px solid black; display: inline-block; width: 10px; height: 10px;"></span>	MINOR AQUIFER INTERMEDIATE

**highways**  
england

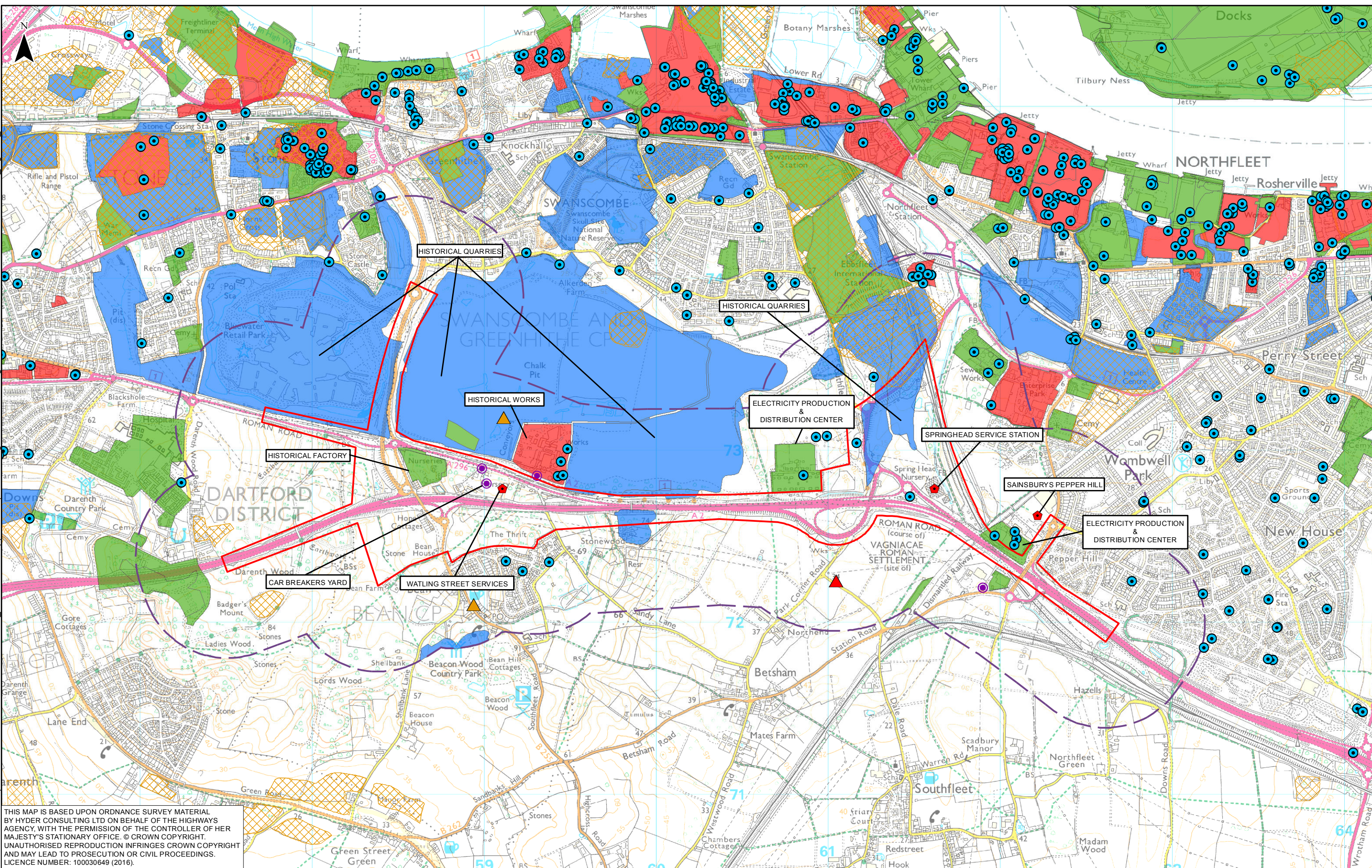
**Halcrow Hyder Joint Venture**  
Burdorp Park  
Swindon, SN4 0OD  
Tel. +44(0)1793 812479

Project: A2 BEAN AND EBBSFLEET JUNCTION IMPROVEMENTS

Drawing title: **FIGURE 10.6**  
**AQUIFER VULNERABILITY ZONES**

Status	Revision
FINAL	P02
Scale: 1:20,000	Date: 24/11/2016
Drawn By: SD	
Checked By: GS	
Approved By: NM	
Project No: HA543917	Originator: HHJV
Original Size: A3	
Drawing number: HA543917-HHJV-EGN-ZZZZ-GIS-EN-0035	





THIS MAP IS BASED UPON ORDNANCE SURVEY MATERIAL BY HYDER CONSULTING LTD ON BEHALF OF THE HIGHWAYS AGENCY, WITH THE PERMISSION OF THE CONTROLLER OF HER MAJESTY'S STATIONARY OFFICE. © CROWN COPYRIGHT. UNAUTHORISED REPRODUCTION INFRINGES CROWN COPYRIGHT AND MAY LEAD TO PROSECUTION OR CIVIL PROCEEDINGS. LICENCE NUMBER: 100030649 (2016).

0 0.5 1 Kilometers		
P02	02/09/2016	FINAL
P01	19/08/2016	FINAL DRAFT FOR APPROVAL
Rev	Rev. Date	Purpose of revision

KEY			
	SCHEME LIMIT		HISTORICAL TANKS
	STUDY AREA, 500M OFFSET		MAJOR POLLUTION INCIDENT
	WASTE MANAGEMENT		SIGNIFICANT POLLUTION INCIDENT
	HISTORICAL FUEL STATIONS		HISTORICAL LANDFILLS
			HISTORICAL QUARRIES
			HISTORICAL WORKS/FATORIES
			OTHER USES

**highways**  
england

**Halcrow Hyder Joint Venture**  
Burdorpe Park  
Swindon, SN4 0DD  
Tel. +44(0)1793 812479

Project: A2 BEAN AND EBBSFLEET JUNCTION IMPROVEMENTS

Drawing title: **FIGURE 10.7 CONTAMINATIVE LAND USES**

Status	FINAL	Revision	P02
Scale	1:20,000	Date	02/09/2016
Drawn By	SD		
Checked By	GS		
Approved By	NM		
Project No.	HA543917	Originator	HHJV
Original Size			A3
Drawing number	HA543917-HHJV-EGN-ZZZZ-GIS-EN-0032		