

A2 Bean and Ebbsfleet Junction Improvements

Environmental Assessment Report (EAR)

Volume 2

Figures

Contents:

PART 1

- 1.1 Location Plan
- 2.1 Scheme Option Layout - Bean Junction Option 3
- 2.2 Scheme Option Layout - Bean Junction Option 4b
- 2.3 Scheme Option Layout - Bean Junction Option 5
- 2.4 Scheme Option Layout- Ebbsfleet Junction Option 1b
- 4.1 Cumulative Assessment
- 5.1 Statutory and Non-Statutory Wildlife Sites
- 5.2 Phase 1 Habitat Survey Map

PART 2

- 5.3 Ecological Constraints Map
- 6.1 Environmental Designations
- 6.2 Access Land and Public Rights of Way
- 6.3 Topography Map
- 6.4 National Character areas

6.5 Regional Landscape Character Areas

6.6 Local Landscape Character Areas

PART 3

6.7 Zone of Theoretical Visibility

6.8 Potential Viewpoint Location

6.9 Photosheets 2x

7.1 Air Quality Baseline

PART 4

7.2 Bean Option 3 Study Area

7.3 Bean Option 4b Study Area

7.4 Bean Option 5 Study Area

8.1 Noise Important Areas within the Study Area

9.1 Statutory and Non-Statutory Cultural Heritage Assets at Bean Option 3

9.2 Statutory and Non-Statutory Cultural Heritage Assets at Bean Option 4b

9.3 Statutory and Non-Statutory Cultural Heritage Assets at Bean Option 5

9.4 Statutory and Non-Statutory Cultural Heritage Assets at Ebbsfleet Option 1b

PART 5

10.1 Superficial deposits Geology plan

10.2 Solid Geology plan

10.3 Superficial Aquifer designations

10.4 Bedrock Aquifer designations

10.5 Source Protection Zones

10.6 Aquifer Vulnerability

10.7 Contaminative Land Uses

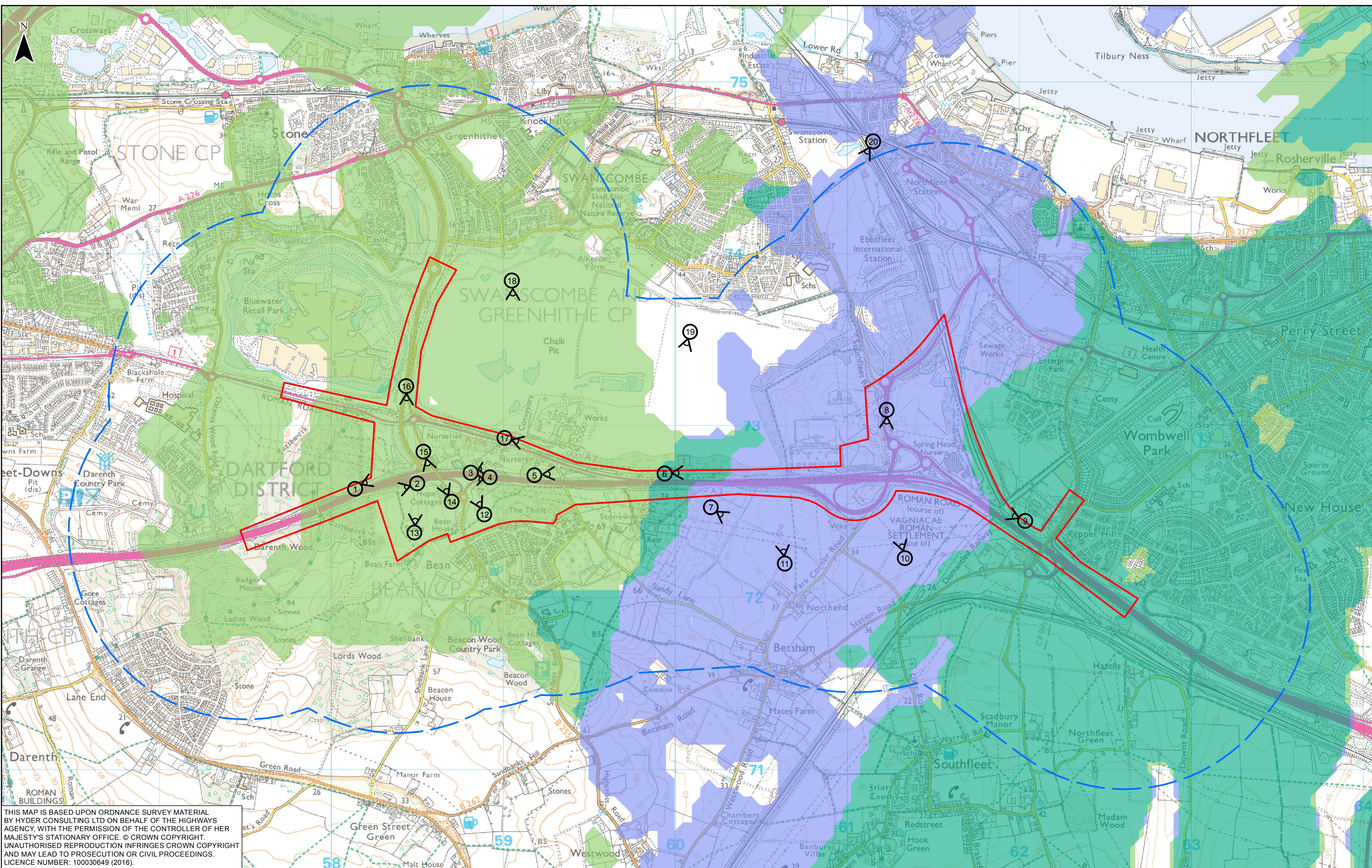
PART 6

10.8 Surface water features

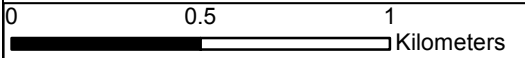
10.9 Existing Drainage

- 11.1 Study Area
- 11.2 Community Facilities
- 11.3 Residential Properties
- 11.4 Commercial Properties - Bean
- 11.5 Commercial Properties - Ebbsfleet
- 11.6 Public Rights of Way
- 11.7 Development Land
- 11.8 Agricultural Land

Path: I:\GIS\A2 Bean to Ebbsfleet PCF2 Options\ID-Calculations\A2 Bean to Ebbsfleet\Environmental Appraisal Report - GIS Figures\Landscapes and Visual\007-UA006811_02-Fig.7-Zone of Theoretical Visibility_Sheet 1 of 3.mxd



THIS MAP IS BASED UPON ORDNANCE SURVEY MATERIAL BY HYDER CONSULTING LTD ON BEHALF OF THE HIGHWAYS AGENCY, WITH THE PERMISSION OF THE CONTROLLER OF HER MAJESTY'S STATIONARY OFFICE. © CROWN COPYRIGHT. UNAUTHORISED REPRODUCTION INFRINGES CROWN COPYRIGHT AND MAY LEAD TO PROSECUTION OR CIVIL PROCEEDINGS. LICENCE NUMBER: 100030649 (2016).



KEY	
	SCHEME LIMIT
	STUDY AREA, 1000M OFFSET
	POTENTIAL VIEWPOINT LOCATION AND VIEWPOINT DIRECTION
	AREA FROM WHICH PART OF, OR ALL OF, PROPOSED DEVELOPMENT BEAN OPTION 3 MAY BE VISIBLE
	AREA FROM WHICH BOTH EBBSFLEET OPTION 1B AND BEAN OPTION 3 MAY BE VISIBLE
	AREA FROM WHICH PART OF, OR ALL OF, PROPOSED DEVELOPMENT EBBSFLEET OPTION 1B MAY BE VISIBLE

highways
england

Halcrow Hyder Joint Venture

Burdorop Park
Swindon, SN4 0QD
Tel. +44(0)1793 812479

Halcrow **Hyder**

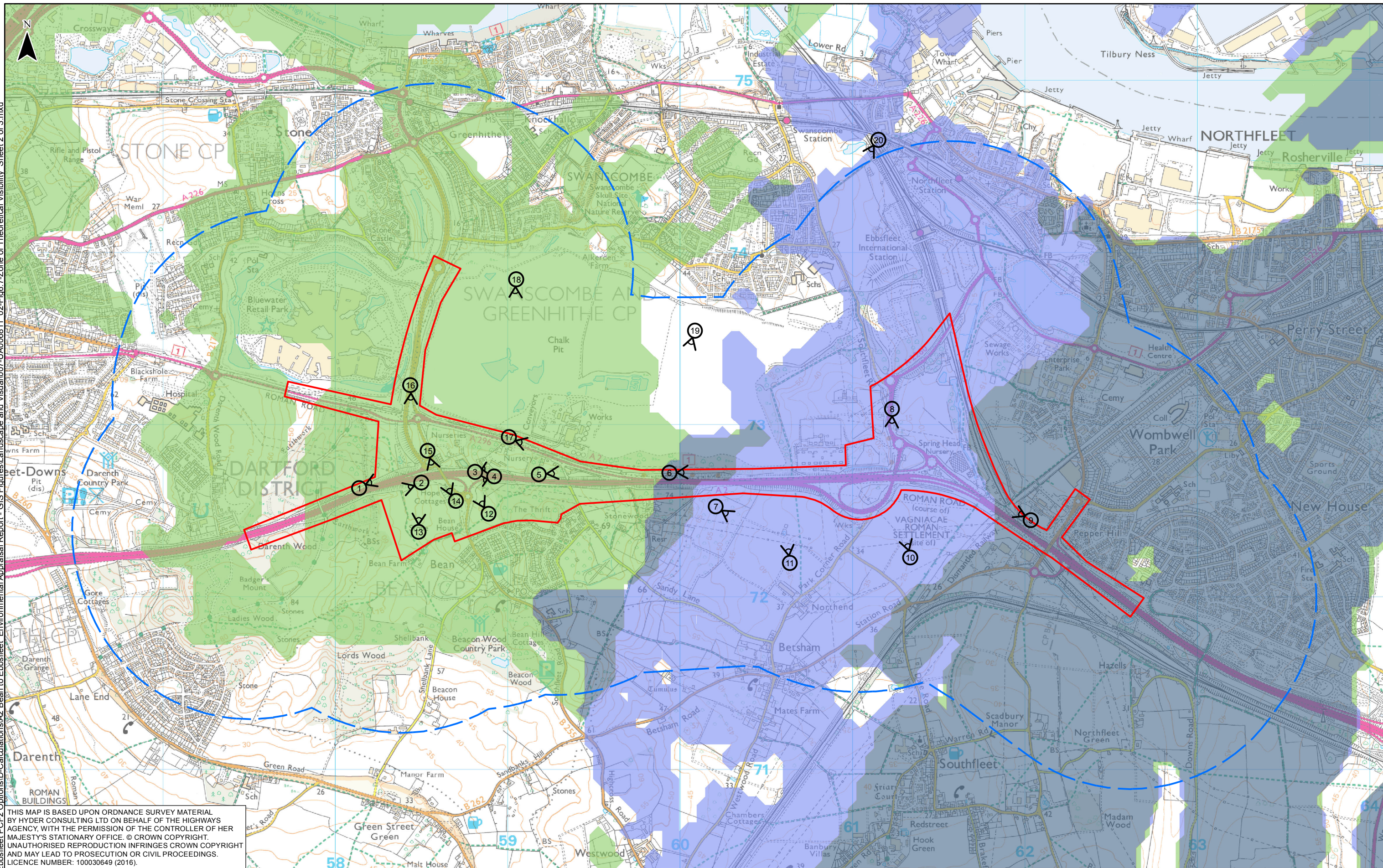
Project: A2 BEAN AND EBBSFLEET JUNCTION IMPROVEMENTS

Drawing title: **FIGURE 6.7**
ZONE OF THEORETICAL VISIBILITY
SHEET 1 OF 3

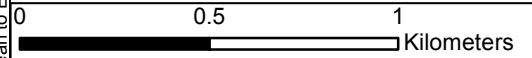
Status	FINAL	Revision	P02
Scale	1:20,000	Date	24/11/2016
Drawn By	SD		
Checked By	GS		
Approved By	NM		
Project No.	HA543917	Originator	HHJV
Original Size			A3
Drawing number	HA543917-HHJV-EGN-ZZZZ-GIS-EN-0016		

Rev	Rev. Date	Purpose of revision	Drawn	Checked	Appr'd
P02	24/11/2016	FINAL	SD	GS	NM
P01	25/08/2016	FINAL DRAFT FOR APPROVAL	SD	GS	NM

Path: I:\GIS\A2 Bean to Ebbsfleet PCF2 Options\A2 Bean to Ebbsfleet Environmental Appraisal Report - GIS Figures\landscape and Visual\007-UA00811_02-Fig.7-Zone of Theoretical Visibility Sheet 2 of 3.mxd



THIS MAP IS BASED UPON ORDNANCE SURVEY MATERIAL BY HYDER CONSULTING LTD ON BEHALF OF THE HIGHWAYS AGENCY, WITH THE PERMISSION OF THE CONTROLLER OF HER MAJESTY'S STATIONARY OFFICE. © CROWN COPYRIGHT. UNAUTHORISED REPRODUCTION INFRINGES CROWN COPYRIGHT AND MAY LEAD TO PROSECUTION OR CIVIL PROCEEDINGS. LICENCE NUMBER: 100030649 (2016).



KEY		
	SCHEME LIMIT	
	STUDY AREA, 1000M OFFSET	
 	POTENTIAL VIEWPOINT LOCATION AND VIEWPOINT DIRECTION	
	AREA FROM WHICH PART OF, OR ALL OF, PROPOSED DEVELOPMENT EBBSFLEET OPTION 1B MAY BE VISIBLE	
	AREA FROM WHICH PART OF, OR ALL OF, PROPOSED DEVELOPMENT BEAN OPTION 4B MAY BE VISIBLE	
	AREA FROM WHICH BOTH EBBSFLEET OPTION 1B AND BEAN OPTION 4B MAY BE VISIBLE	

highways
england

Halcrow Hyder Joint Venture

Burdorop Park
Swindon, SN4 0DD
Tel. +44(0)1793 812479

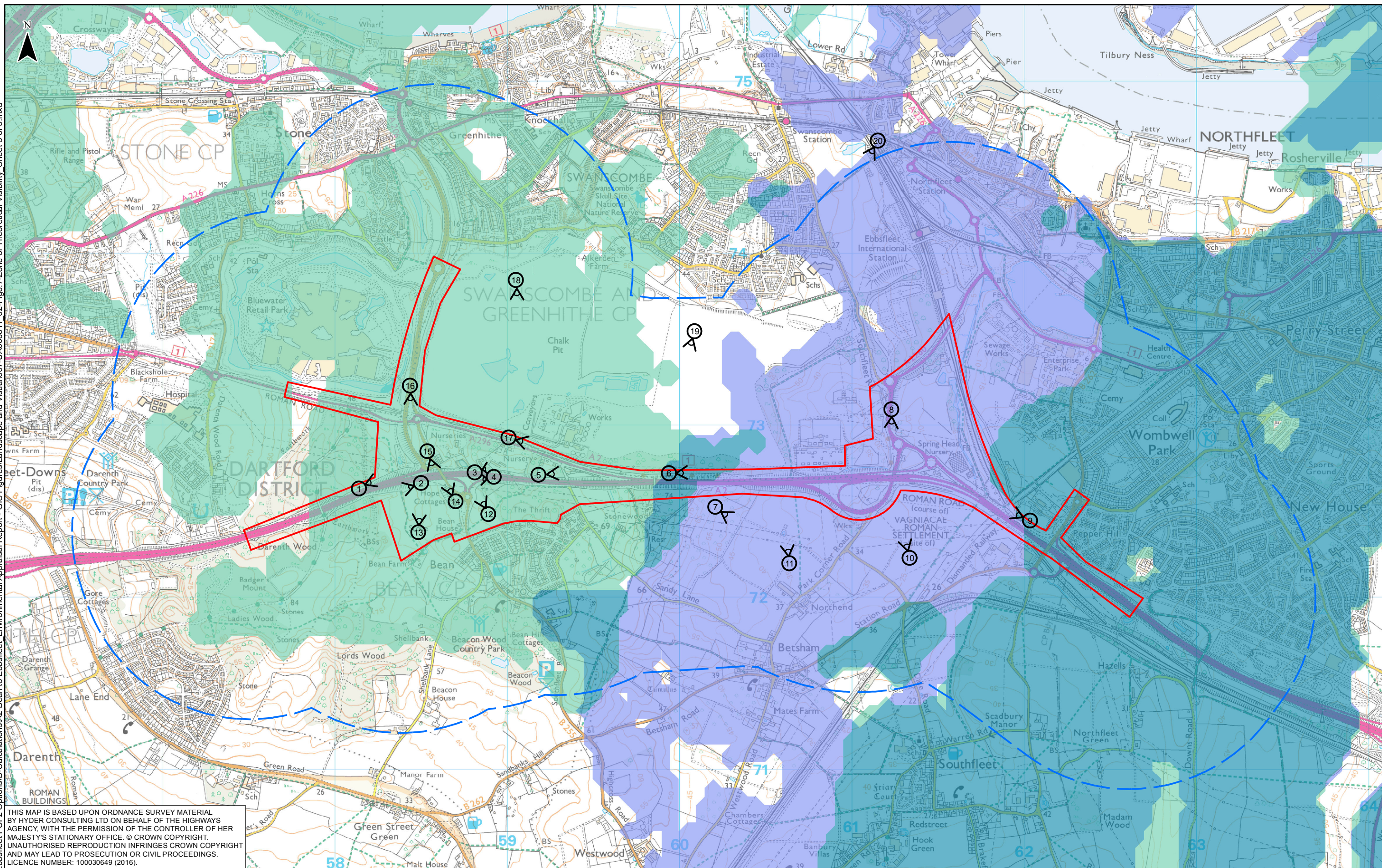
Halcrow **Hyder**

Project: A2 BEAN AND EBBSFLEET JUNCTION IMPROVEMENTS

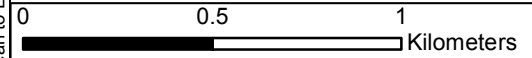
Drawing title: **FIGURE 6.7**
ZONE OF THEORETICAL VISIBILITY
SHEET 2 OF 3

Scale	1:20,000 <th>Date</th> <td>24/11/2016 </td>	Date	24/11/2016
Drawn By	SD	Checked By	GS
Approved By	NM	Project No.	HA543917
Originator	HHJV	Original Size	A3
Drawing number	HA543917-HHJV-EGN-ZZZZ-GIS-EN-0016		

Rev	Rev. Date	Purpose of revision	Drawn	Checked	Appr'd
P02	24/11/2016	FINAL	SD	GS	NM
P01	25/08/2016	FINAL DRAFT FOR APPROVAL	SD	GS	NM



THIS MAP IS BASED UPON ORDNANCE SURVEY MATERIAL BY HYDER CONSULTING LTD ON BEHALF OF THE HIGHWAYS AGENCY, WITH THE PERMISSION OF THE CONTROLLER OF HER MAJESTY'S STATIONARY OFFICE. © CROWN COPYRIGHT. UNAUTHORISED REPRODUCTION INFRINGES CROWN COPYRIGHT AND MAY LEAD TO PROSECUTION OR CIVIL PROCEEDINGS. LICENCE NUMBER: 100030649 (2016).



KEY		
	SCHEME LIMIT	
	STUDY AREA, 1000M OFFSET	
	POTENTIAL VIEWPOINT LOCATION AND VIEWPOINT DIRECTION	
	AREA FROM WHICH PART OF, OR ALL OF, PROPOSED DEVELOPMENT BEAN OPTION 5 MAY BE VISIBLE	
	AREA FROM WHICH BOTH EBBSFLEET OPTION 1B AND BEAN OPTION 5 MAY BE VISIBLE	
	AREA FROM WHICH PART OF, OR ALL OF, PROPOSED DEVELOPMENT EBBSFLEET OPTION 1B MAY BE VISIBLE	

highways
england

Halcrow Hyder Joint Venture

Burdrop Park
Swindon, SN4 0DD
Tel. +44(0)1793 812479

Halcrow **Hyder**

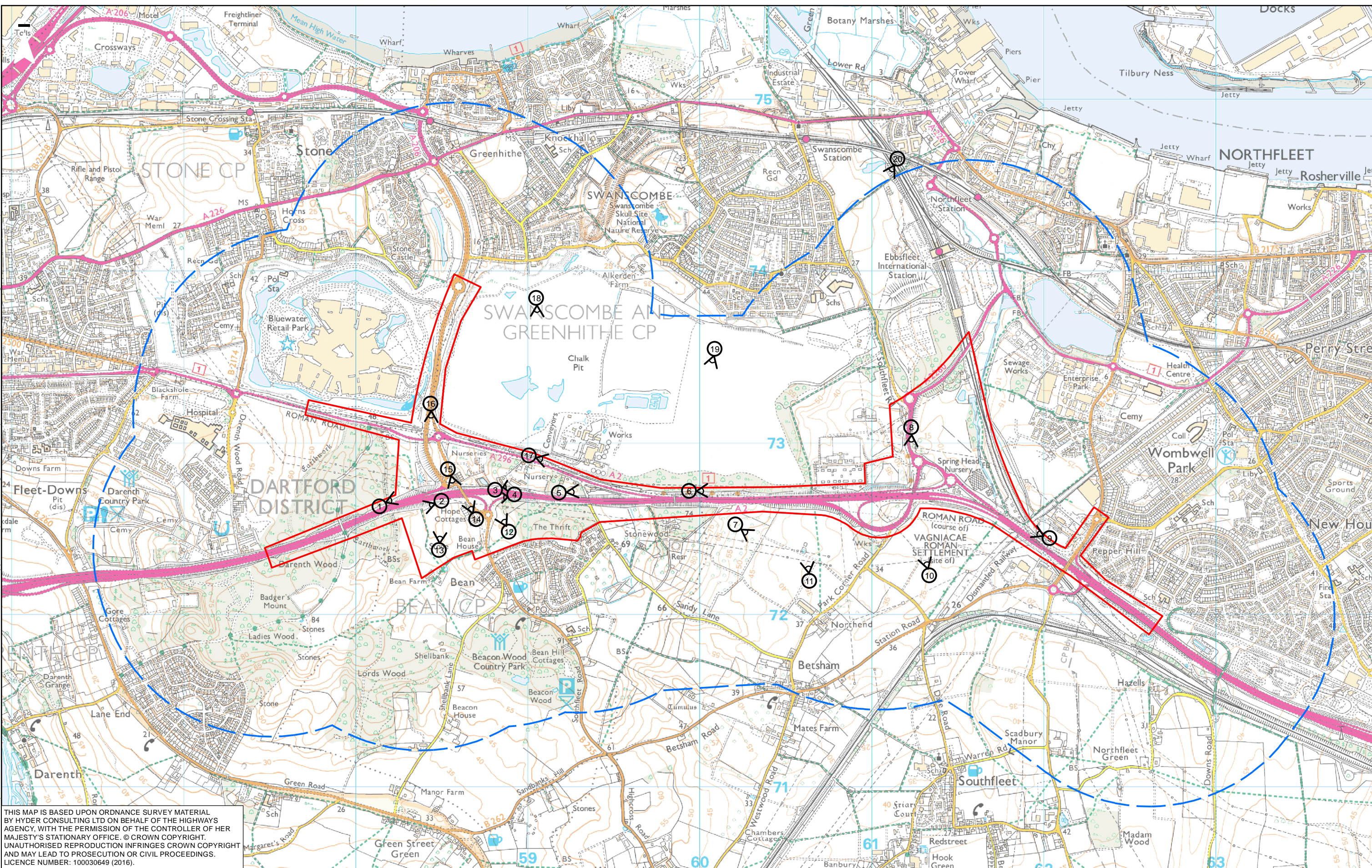
Project: A2 BEAN AND EBBSFLEET JUNCTION IMPROVEMENTS

Drawing title: **FIGURE 6.7**
ZONE OF THEORETICAL VISIBILITY
SHEET 3 OF 3

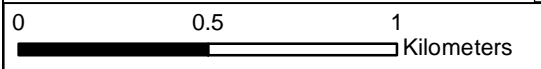
Status	FINAL	Revision	P02
Scale	1:20,000	Date	24/11/2016
Drawn By	SD		
Checked By	GS		
Approved By	NM		
Project No.	HA543917	Originator	HHJV
Original Size			A3
Drawing number	HA543917-HHJV-EGN-ZZZZ-GIS-EN-0016		

Rev	Rev. Date	Purpose of revision	Drawn	Checked	Appr'd
P02	24/11/2016	FINAL	SD	GS	NM
P01	25/08/2016	FINAL DRAFT FOR APPROVAL	SD	GS	NM

Path: K:\GIS\A2 Bean to Ebbsfleet Environmental Appraisal Report - GIS Figures\Landscapes and Visual\008-UA006811_02-Fig.8- Potential Viewpoint Location.mxd



THIS MAP IS BASED UPON ORDNANCE SURVEY MATERIAL BY HYDER CONSULTING LTD ON BEHALF OF THE HIGHWAYS AGENCY, WITH THE PERMISSION OF THE CONTROLLER OF HER MAJESTY'S STATIONARY OFFICE. © CROWN COPYRIGHT. UNAUTHORISED REPRODUCTION INFRINGES CROWN COPYRIGHT AND MAY LEAD TO PROSECUTION OR CIVIL PROCEEDINGS. LICENCE NUMBER: 100030649 (2016).



KEY		
	SCHEME LIMIT	
	STUDY AREA, 1000M OFFSET	
	POTENTIAL VIEWPOINT LOCATION	

highways
england

Halcrow Hyder Joint Venture
Burdens Park
Swindon, SN4 0DD
Tel. +44(0)1793 812479

Halcrow **Hyder**

Project: A2 BEAN AND EBBSFLEET JUNCTION IMPROVEMENTS

Drawing title: **FIGURE 6.8 POTENTIAL VIEWPOINT LOCATION**

Status	FINAL	Revision	P02
Scale	1:20,000	Date	02/09/2016
Drawn By	SD		
Checked By	GS		
Approved By	NM		
Project No.	HA543917	Originator	HHJV
Original Size			A3
Drawing number	HA543917-HHJV-EGN-ZZZZ-GIS-EN-0017		

Rev	Rev. Date	Purpose of revision	Drawn	Checked	Apprv'd
P02	02/09/2016	FINAL	SD	GS	NM
P01	25/08/2016	FINAL DRAFT FOR APPROVAL	SD	GS	NM

Path: K:\GIS\A2 Bean to Ebbsfleet PCF2 Options\D-Calculations\A2 Bean to Ebbsfleet Environmental Appraisal Report - GIS Figures\Landscape and Visual\009-UA006811_02-Fig6.9-Photosheets_Sheet 1 of 4.mxd



VP1: A2: View looking east toward Bean Junction



VP2: B255 bridge over A2: looking west along the A2



VP3: B255 bridge over A2: looking east along the A2



VP4: A2: View looking west towards Bean Junction



VP5: A2: View looking east, westbound sliproad to Bean junction on the right



VP6: A296, Roman Road: View looking east, end of sliproad towards the A2

0 0.1 0.2 Kilometers					
P02	02/09/2016	FINAL	SD	GS	NM
P01	25/08/2016	FINAL DRAFT FOR APPROVAL	SD	GS	NM
Rev	Rev. Date	Purpose of revision	Drawn	Checkd	Apprv'd

highways
england

Halcrow Hyder Joint Venture
Burdens Park
Swindon, SN4 0QD
Tel. +44(0)1793 812479

Project	A2 BEAN AND EBBSFLEET JUNCTION IMPROVEMENTS
Drawing title	FIGURE 6.9 PHOTOSHEETS SHEET 1 OF 4

Status	FINAL	Revision	P02
Scale	1:5,000	Date	02/09/2016
Drawn By	SD		
Checked By	GS		
Approved By	NM		
Project No.	HA543917	Originator	HHJV
Drawing number	HA543917-HHJV-EGN-ZZZZ-GIS-EN-0018	Original Size	A3



VP7: A2: View looking southeast towards Southfleet Arable Lands



VP8: B259/B2260 Roundabout: View looking south towards Ebbfleet Junction



VP9: A2: View looking northwest towards Ebbfleet Junction, in the background the southern part of Eastern Quarries



VP11: Betsham, Park Corner Road, public footpath: View looking north towards Stonewood



VP10: Station Road Corner Foxhounds Lane, By Way through fields: View looking north towards Ebbfleet Junction



VP12: Roundabout south of Bean Junction: View looking south towards properties on the northern boundary of Bean

0 0.1 0.2 Kilometers					
P02	02/09/2016	FINAL	SD	GS	NM
P01	25/08/2016	FINAL DRAFT FOR APPROVAL	SD	GS	NM
Rev	Rev. Date	Purpose of revision	Drawn	Checked	Apprv'd

highways england
Halcrow Hyder Joint Venture
Burdens Park Swindon, SN4 0QD Tel. +44(0)1793 812479

Project	A2 BEAN AND EBBSFLEET JUNCTION IMPROVEMENTS		
Drawing title	FIGURE 6.9 PHOTOSHEETS SHEET 2 OF 4		
Status	FINAL	Revision	P02
Scale	1:5,000	Date	02/09/2016
Drawn By	SD	Checked By	GS
Approved By	NM	Project No.	HA543917
Originator	HHJV	Original Size	A3
Drawing number	HA543917-HHJV-EGN-ZZZZ-GIS-EN-0018		

Path: K:\GIS\A2 Bean to Ebbsfleet PCF2 Options\Calculations\A2 Bean to Ebbsfleet Environmental Appraisal Report - GIS Figures\Landscape and Visual\009-UA006811_02-Fig6.9-Photosheets_Sheet 3 of 4.mxd



VP13: B255 bridge over A2: looking southwest towards Bean Farm (Listed Building)



VP14: Roundabout south of Bean Junction: View looking north towards Bean Junction, on the left Hope Cottages



VP15: Roundabout north of Bean Junction: View looking south towards Bean Junction, on the left Ightham Cottages



VP16: B255: View looking south towards A296 / B255 Roundabout



VP17: A296, Roman Road: View towards entrance site of Eastern Quarry on the left



VP18: Mount Road, Greenhithe: View looking south towards Eastern Quarry

0 0.1 0.2 Kilometers					
P02	02/09/2016	FINAL	SD	GS	NM
P01	25/08/2016	FINAL DRAFT FOR APPROVAL	SD	GS	NM
Rev	Rev. Date	Purpose of revision	Drawn	Checked	Apprv'd

highways england
Halcrow Hyder Joint Venture
Burdensop Park
Swindon, SN4 0QD
Tel. +44(0)1793 812479

Project	A2 BEAN AND EBBSFLEET JUNCTION IMPROVEMENTS	
Drawing title	FIGURE 6.9 PHOTOSHEETS SHEET 3 OF 4	

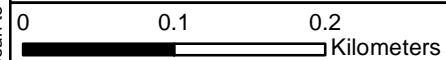
Status	FINAL	Revision	P02
Scale	1:5,000	Date	02/09/2016
Drawn By	SD		
Checked By	GS		
Approved By	NM		
Project No.	HA543917	Originator	HHJV
Original Size			A3
Drawing number	HA543917-HHJV-EGN-ZZZZ-GIS-EN-0018		



VP 19: Swanscombe, Betham Road, public footpath: View looking south/southwest towards the A2



VP 20: Northfleet, Church Path, public footpath: View looking southwest towards A2 and Ebbsfleet Junction



Rev	Rev. Date	Purpose of revision	Drawn	Checkd	Apprv'd
P02	02/09/2016	FINAL	SD	GS	NM
P01	25/08/2016	FINAL DRAFT FOR APPROVAL	SD	GS	NM

highways england

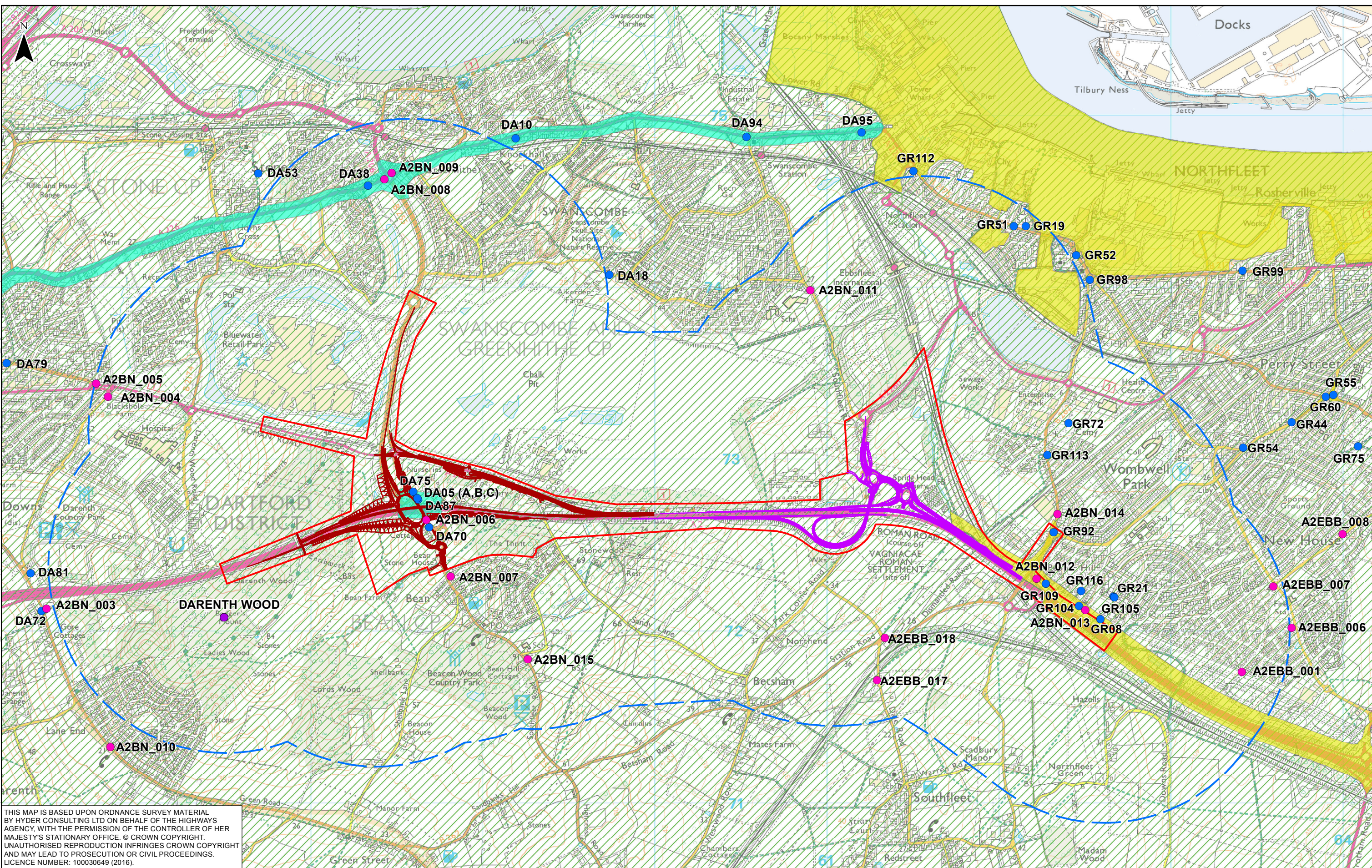
Halcrow Hyder Joint Venture

Burderop Park
Swindon, SN4 0QD
Tel. +44(0)1793 812479

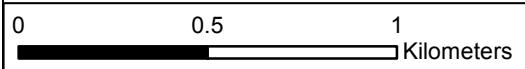
Project	A2 BEAN AND EBBSFLEET JUNCTION IMPROVEMENTS	
Drawing title	FIGURE 6.9 PHOTOSHEETS SHEET 4 OF 4	

Status	FINAL	Revision	P02
Scale	1:5,000	Date	02/09/2016
Drawn By	SD		
Checked By	GS		
Approved By	NM		
Project No.	HA543917	Originator	HHJV
Drawing number	HA543917-HHJV-EGN-ZZZZ-GIS-EN-0018		
Original Size			A3

Path: I:\GIS\A2 Bean to Ebbsfleet PCF2 Options\Calculations\A2 Bean to Ebbsfleet Environmental Appraisal Report - GIS Figures\Air Quality\11-02_Fig 7.1 - Air Quality Baseline.mxd



THIS MAP IS BASED UPON ORDNANCE SURVEY MATERIAL BY HYDER CONSULTING LTD ON BEHALF OF THE HIGHWAYS AGENCY, WITH THE PERMISSION OF THE CONTROLLER OF HER MAJESTY'S STATIONARY OFFICE. © CROWN COPYRIGHT. UNAUTHORISED REPRODUCTION INFRINGES CROWN COPYRIGHT AND MAY LEAD TO PROSECUTION OR CIVIL PROCEEDINGS. LICENCE NUMBER: 100030649 (2016).



KEY	
	SCHEME LIMIT
	STUDY AREA, 1000M OFFSET
	EBBSFLEET OPTION 1B
	BEAN OPTION 3
	HIGHWAYS ENGLAND MONITORING SITES
	LOCAL AUTHORITY MONITORING SITES
	SITE OF SPECIAL SCIENTIFIC INTEREST
	LOCAL AUTHORITY BOUNDARY LINE
	AIR QUALITY MANAGEMENT AREA
	DARTFORD BOROUGH COUNCIL
	GRAVESHAM BOROUGH COUNCIL

Rev	Rev. Date	Purpose of revision	Drawn	Checked	Appr'd
P02	24/11/2016	FINAL	SD	GS	NM
P01	25/08/2016	FINAL DRAFT FOR APPROVAL	SD	GS	NM

highways
england

Halcrow Hyder Joint Venture
Burdorpe Park
Swindon, SN4 0DD
Tel. +44(0)1793 812479

Project: A2 BEAN AND EBBSFLEET JUNCTION IMPROVEMENTS

Drawing title: **FIGURE 7.1 AIR QUALITY BASELINE**

Status	FINAL	Revision	P02
Scale	1:20,000	Date	24/11/2016
Drawn By	SD	Checked By	GS
Approved By	NM	Project No.	HA543917
Originator	HHJV	Original Size	A3
Drawing number	HA543917-HHJV-EGN-ZZZZ-GIS-EN-0019		