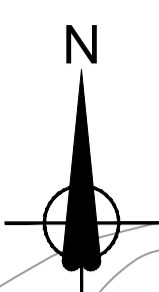
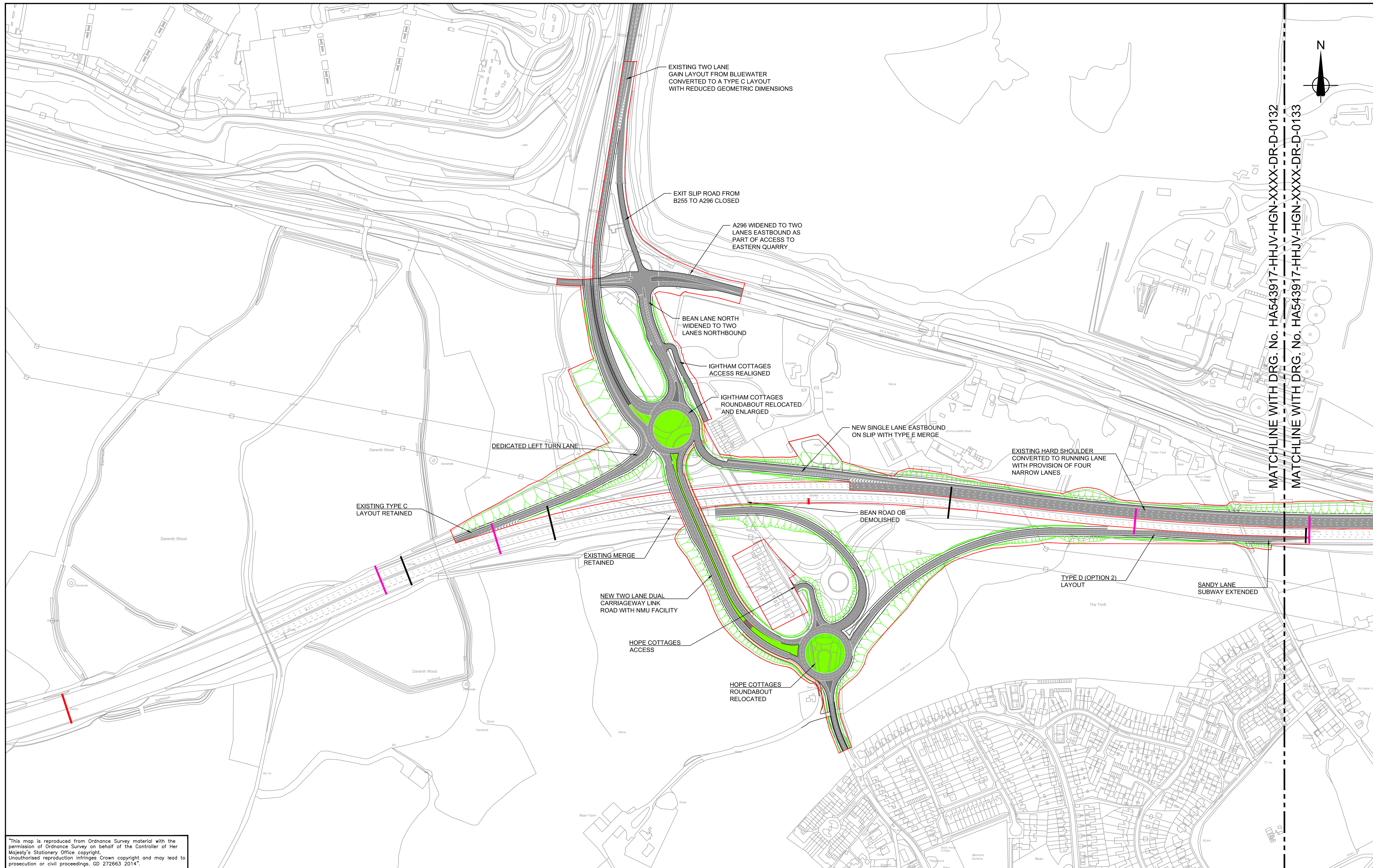


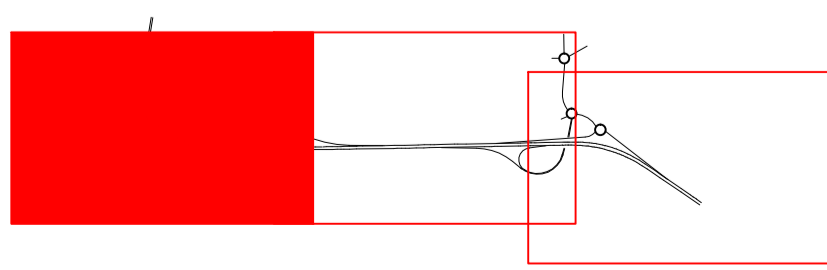
N:\Highways\UKR\B001883-01-A2 Bean and EbsfleetE-Drawings\01-IFP\Working Drawings\HA543917-HHJV-HGN-XXXX-DR-D-0132-0132 - RM100457



MATCHLINE WITH DRG. No. HA543917-HHJV-HGN-XXXX-DR-D-0132
 MATCHLINE WITH DRG. No. HA543917-HHJV-HGN-XXXX-DR-D-0133

This map is reproduced from Ordnance Survey material with the permission of Ordnance Survey on behalf of the Controller of Her Majesty's Stationery Office copyright. Unauthorised reproduction infringes Crown copyright and may lead to prosecution or civil proceedings. GD 272663 2014.

Rev	Status	Rev. Date	Purpose of revision	Drawn	Chkd	Apprv'd
P4	S3	24-11-2016	MINOR AMENDMENTS	RMS	ML	ME
P1	S3	22-08-2016	FOR COMMENT AND REVIEW	RMS	ML	ME
P2.1	S0	27-06-2016	INTERIM DESIGN FIX C	RMS	ML	ME
P1	S2	14-06-2016	FOR INFORMATION	RMS	ML	ME
P1.1	S0	24-05-2016	FIRST DRAFT	RMS	ML	ME



——— SCHEME BOUNDARY
 ——— EXISTING SIGN AND SIGNAL GANTRY RETAINED
 ——— NEW SIGN AND SIGNAL GANTRY
 ——— EXISTING SIGN AND SIGNAL GANTRY REMOVED

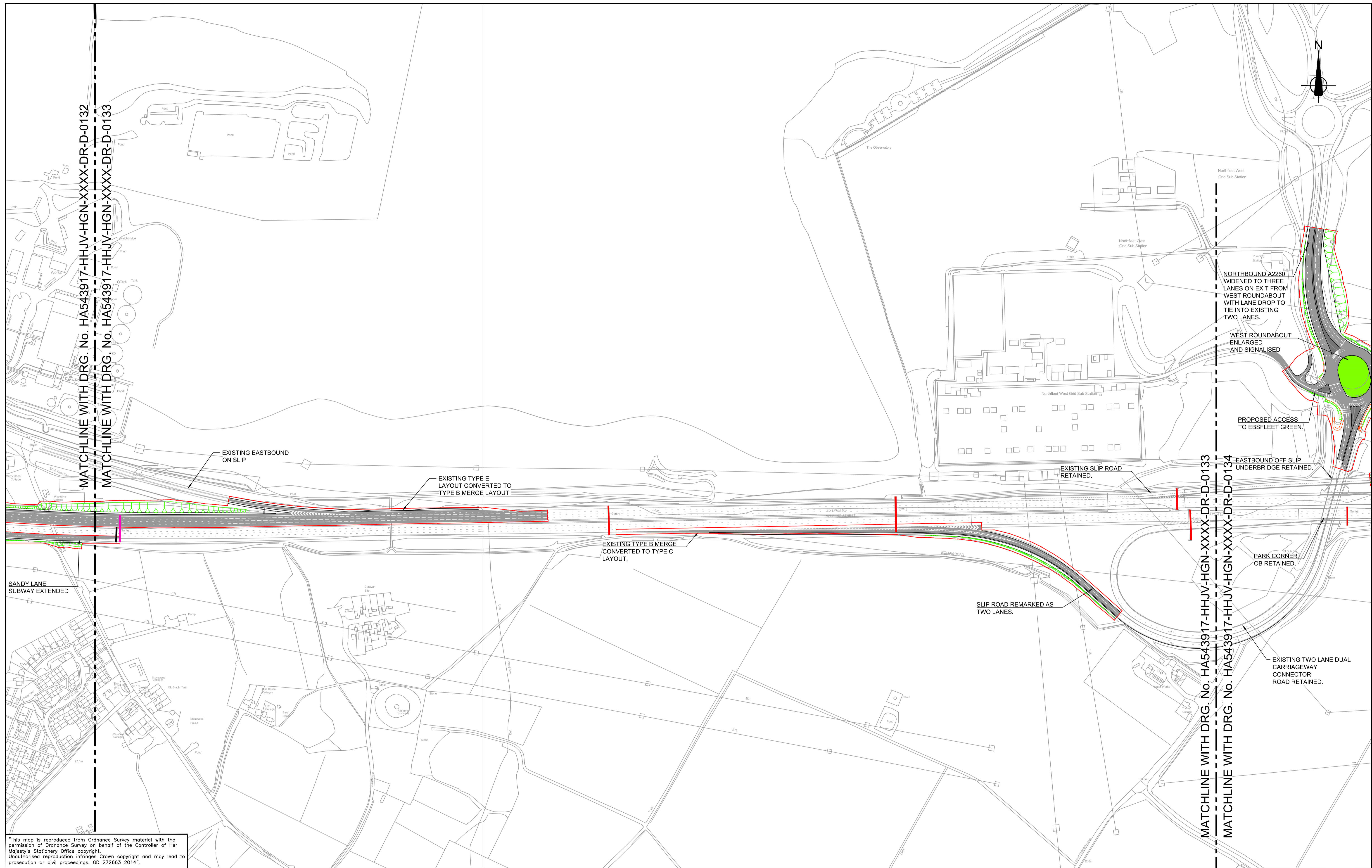
0 50 100 150 200 250m
 1 : 2500

Client **highways england**
Halcrow Hyder Joint Venture
 Burderop Park
 Swindon, SN4 0QD
 Tel. +44(0)1793 812479
Halcrow Hyder

Project **A2 BEAN AND EBBSFLEET JUNCTION IMPROVEMENTS**
 Drawing title **GENERAL LAYOUT BEAN OPTION 4 AND EBBSFLEET OPTION 1 SHEET 1 OF 3**

Status	Revision
S3	P4
Scale	1:2500
Drawn By	RAVITEJA M.S
Checked By	M.LUDLAM
Approved By	M.EMERY
Project No.	HA PIN 543917
Originator	HHJV
Original Size	A1
Drawing number	HGN-XXXX-DR-D-0132

N:\Highways\UKR\UB001863-01-A2-Bean and EbsfleetE-Drawings\01-IFP\Working Drawings\HA543917-HHJV-HGN-XXXX-DR-D-0132-0134.dwg - 11/24/2016 5:38:26 PM - 0133 - RM100457



This map is reproduced from Ordnance Survey material with the permission of Ordnance Survey on behalf of the Controller of Her Majesty's Stationery Office copyright. Unauthorised reproduction infringes Crown copyright and may lead to prosecution or civil proceedings. GD 272663 2014.

Rev	Status	Rev. Date	Purpose of revision	Drawn	Chkd	Apprv'd
P4	S3	24-11-2016	MINOR AMENDMENTS	RMS	ML	ME
P1	S3	22-08-2016	FOR COMMENT AND REVIEW	RMS	ML	ME
P2.1	S0	27-06-2016	INTERIM DESIGN FIX C	RMS	ML	ME
P1	S2	14-06-2016	FOR INFORMATION	RMS	ML	ME
P1.1	S0	24-05-2016	FIRST DRAFT	RMS	ML	ME



——— SCHEME BOUNDARY
 ——— EXISTING SIGN AND SIGNAL GANTRY RETAINED
 ——— NEW SIGN AND SIGNAL GANTRY
 ——— EXISTING SIGN AND SIGNAL GANTRY REMOVED

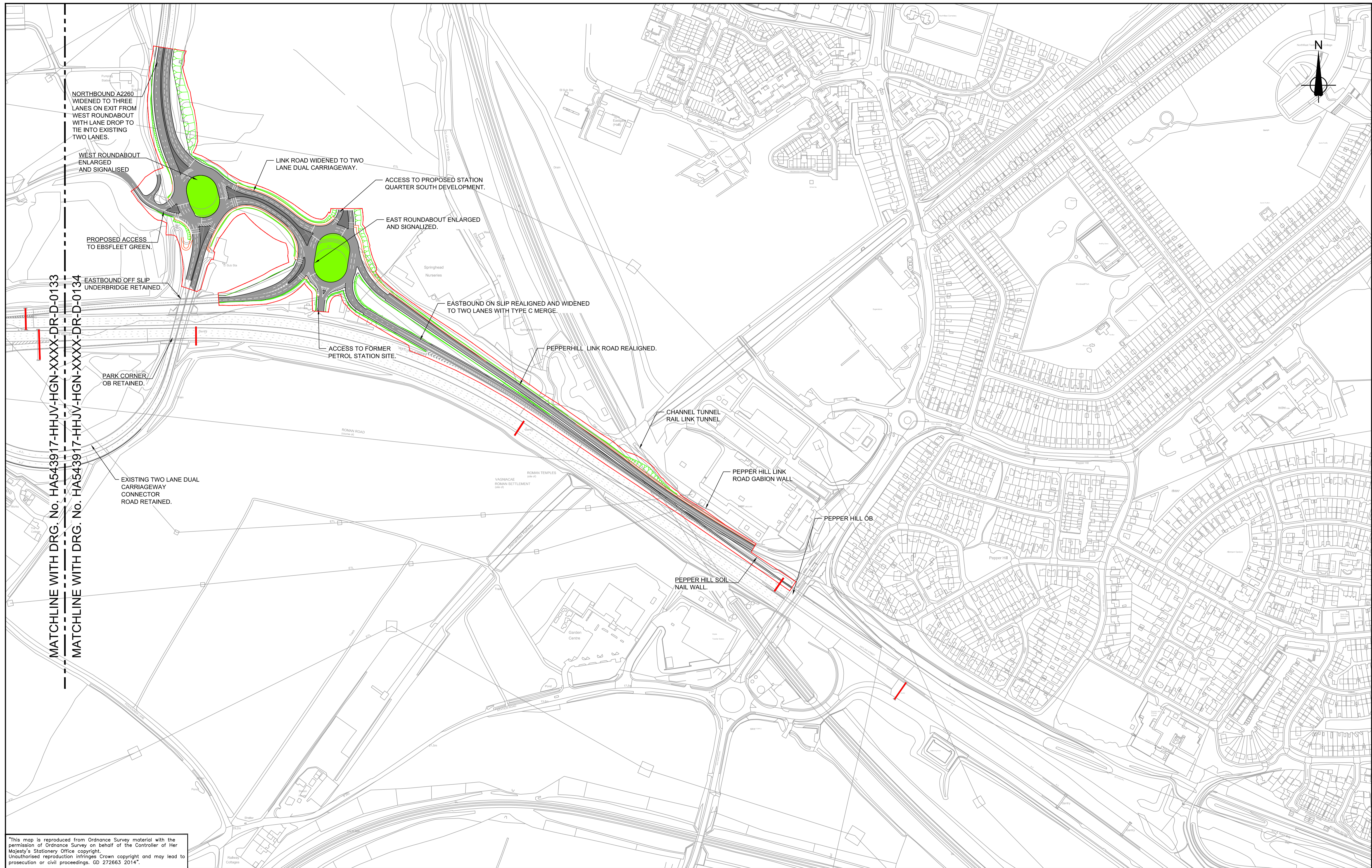
1 : 2500

Client **highways england**
Halcrow Hyder Joint Venture
 Burderop Park
 Swindon, SN4 0QD
 Tel. +44(0)1793 812479

Project **A2 BEAN AND EBSFLEET JUNCTION IMPROVEMENTS**
 Drawing title **GENERAL LAYOUT BEAN OPTION 4 AND EBSFLEET OPTION 1 SHEET 2 OF 3**

Status	S3	Revision	P4
Scale	1:2500	Date	24-11-2016
Drawn By	RAVITEJA M.S		
Checked By	M.LUDLAM		
Approved By	M.EMERY		
Project No.	HA PIN 543917	Originator	HHJV
Drawing number	HGN-XXXX-DR-D-0133	Original Size	A1

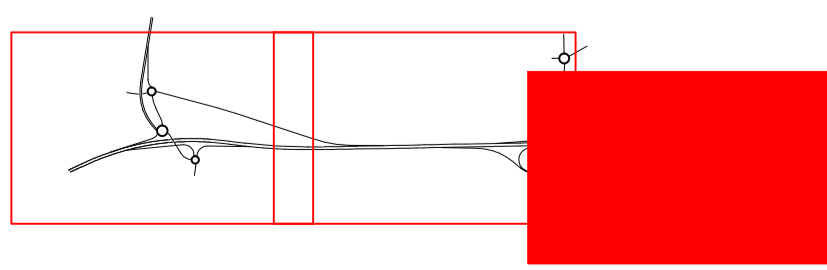
N:\Highways\UKR\B01863-01-A2 Bean and EbsfleetE-Drawings\01-IFP\Working Drawings\HA543917-HHJV-HGN-XXXX-DR-D-0134.dwg - 11/24/2016 5:38:34 PM - 0134 - RM100457



MATCHLINE WITH DRG. No. HA543917-HHJV-HGN-XXXX-DR-D-0133
 MATCHLINE WITH DRG. No. HA543917-HHJV-HGN-XXXX-DR-D-0134

This map is reproduced from Ordnance Survey material with the permission of Ordnance Survey on behalf of the Controller of Her Majesty's Stationery Office copyright. Unauthorised reproduction infringes Crown copyright and may lead to prosecution or civil proceedings. GD 272663 2014.

Rev	Status	Rev. Date	Purpose of revision	Drawn	Chk'd	Appr'd
P4	S3	24-11-2016	MINOR AMENDMENTS	RMS	ML	ME
P1	S3	22-08-2016	FOR COMMENT AND REVIEW	RMS	ML	ME
P2.1	S0	27-06-2016	INTERIM DESIGN FIX C	RMS	ML	ME
P1	S2	14-06-2016	FOR INFORMATION	RMS	ML	ME
P1.1	S0	24-05-2016	FIRST DRAFT	RMS	ML	ME



——— SCHEME BOUNDARY
 ——— EXISTING SIGN AND SIGNAL GANTRY RETAINED
 ——— NEW SIGN AND SIGNAL GANTRY
 ——— EXISTING SIGN AND SIGNAL GANTRY REMOVED

0 50 100 150 200 250m

1 : 2500

Client

highways england

Halcrow Hyder Joint Venture
 Burderop Park
 Swindon, SN4 0GD
 Tel. +44(0)1793 812479

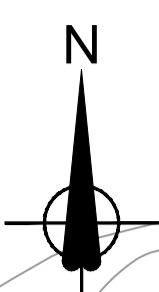
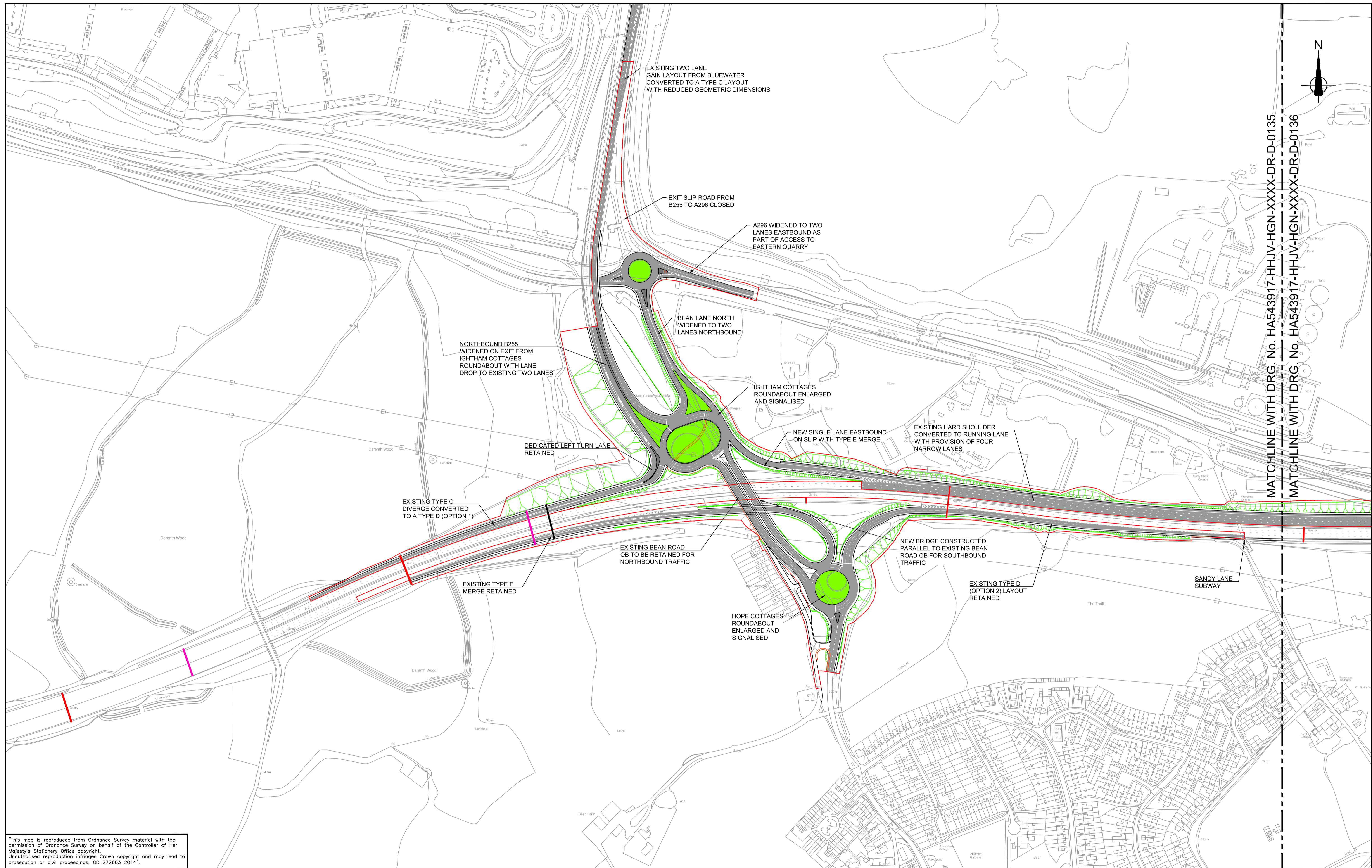
Halcrow **Hyder**

Project **A2 BEAN AND EBBSFLEET JUNCTION IMPROVEMENTS**

Drawing title **GENERAL LAYOUT BEAN OPTION 4 AND EBBSFLEET OPTION 1 SHEET 3 OF 3**

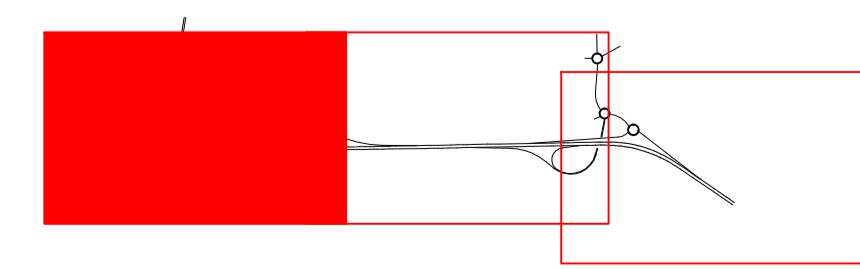
Status	Revision
S3	P4
Scale	1:2500
Drawn By	RAVITEJA M.S
Checked By	M.LUDLAM
Approved By	M.EMERY
Project No.	HA PIN 543917
Originator	HHJV
Original Size	A1
Drawing number	HGN-XXXX-DR-D-0134

N:\Highways\UKR\B01883-01-A2-Bean and EbsfleetE-Drawings\01-IFP\Working Drawings\HA543917-HHJV-HGN-XXXX-DR-D-0135-0137.dwg - 11/24/2016 5:38:04 PM - 0135 - RM100457



"This map is reproduced from Ordnance Survey material with the permission of Ordnance Survey on behalf of the Controller of Her Majesty's Stationery Office copyright. Unauthorised reproduction infringes Crown copyright and may lead to prosecution or civil proceedings. GD 272663 2014".

Rev	Status	Rev. Date	Purpose of revision	Drawn	Chkd	Apprv'd
P4	S3	24-11-2016	MINOR AMENDMENTS	RMS	ML	ME
P1	S3	22-08-2016	FOR COMMENT AND REVIEW	RMS	ML	ME
P2.1	S0	27-06-2016	INTERIM DESIGN FIX C	RMS	ML	ME
P1	S2	14-06-2016	FOR INFORMATION	RMS	ML	ME
P1.1	S0	24-05-2016	FIRST DRAFT	RMS	ML	ME



— SCHEME BOUNDARY
— EXISTING SIGN AND SIGNAL GANTRY RETAINED
— NEW SIGN AND SIGNAL GANTRY
— EXISTING SIGN AND SIGNAL GANTRY REMOVED

0 50 100 150 200 250m

1: 2500

Client

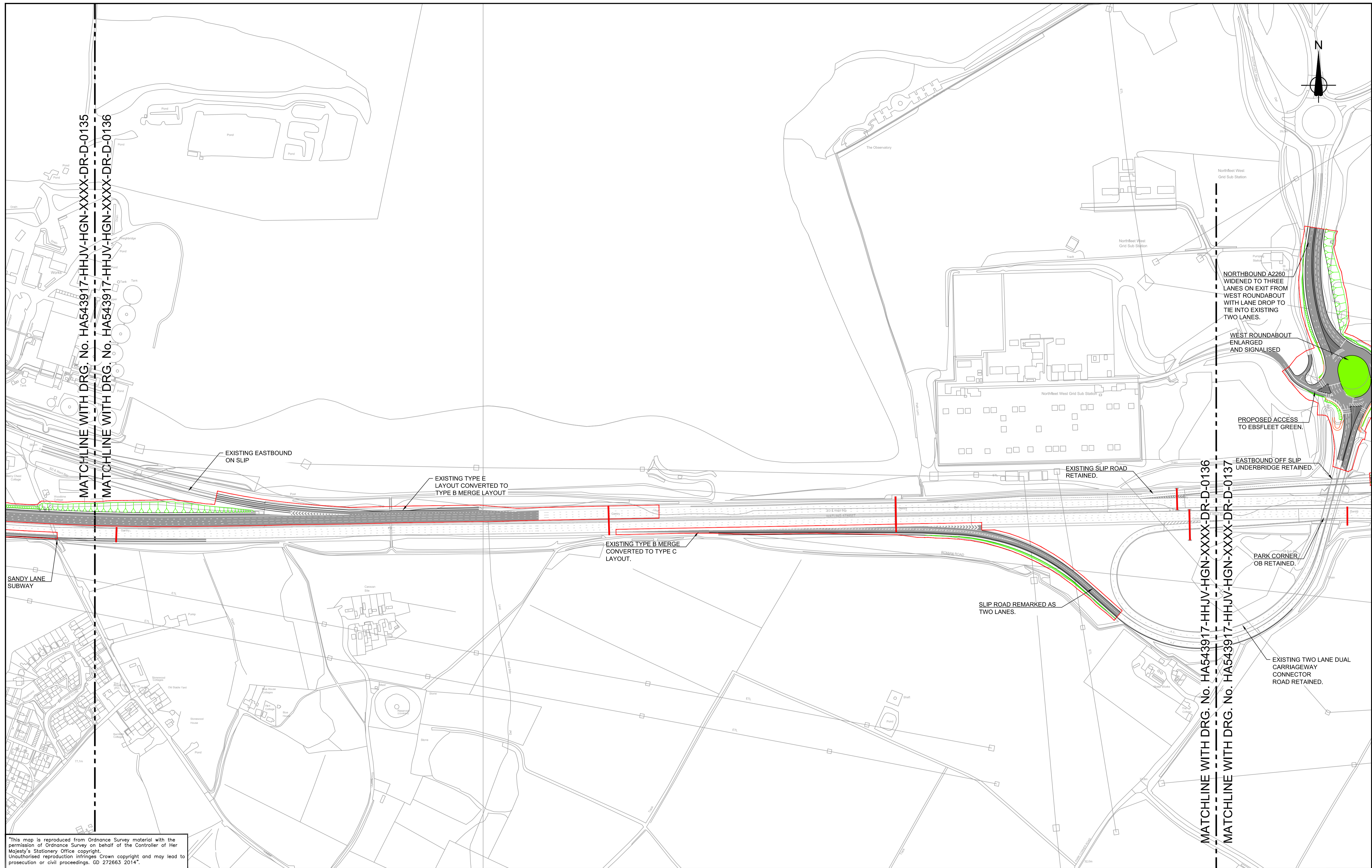
Halcrow Hyder Joint Venture
 Burderop Park
 Swindon, SN4 0QD
 Tel. +44(0)1793 812479

Project **A2 BEAN AND EBBSFLEET JUNCTION IMPROVEMENTS**

Drawing title **GENERAL LAYOUT BEAN OPTION 5 AND EBBSFLEET OPTION 1 SHEET 1 OF 3**

Status	S3	Revision	P4
Scale	1:2500	Date	24-11-2016
Drawn By	RAVITEJA M.S	Checked By	M.LUDLAM
Approved By	M.EMERY	Originator	HHJV
Project No.	HA PIN 543917	Original Size	A1
Drawing number	HGN-XXXX-DR-D-0135		

N:\Highways\UKR\UB01863-01-A2-Bean and EbsfleetE-Drawings\01-IFP\Working Drawings\HA543917-HHJV-HGN-XXXX-DR-D-0135-0137.dwg - 11/24/2016 5:38:16 PM - 0136 - RM000457



This map is reproduced from Ordnance Survey material with the permission of Ordnance Survey on behalf of the Controller of Her Majesty's Stationery Office copyright. Unauthorised reproduction infringes Crown copyright and may lead to prosecution or civil proceedings. GD 272663 2014.

Rev	Status	Rev. Date	Purpose of revision	Drawn	Chkd	Apprv'd
P4	S3	24-11-2016	MINOR AMENDMENTS	RMS	ML	ME
P1	S3	22-08-2016	FOR COMMENT AND REVIEW	RMS	ML	ME
P2.1	S0	27-06-2016	INTERIM DESIGN FIX C	RMS	ML	ME
P1	S2	14-06-2016	FOR INFORMATION	RMS	ML	ME
P1.1	S0	24-05-2016	FIRST DRAFT	RMS	ML	ME



SCHEME BOUNDARY
EXISTING SIGN AND SIGNAL GANTRY RETAINED
NEW SIGN AND SIGNAL GANTRY
EXISTING SIGN AND SIGNAL GANTRY REMOVED

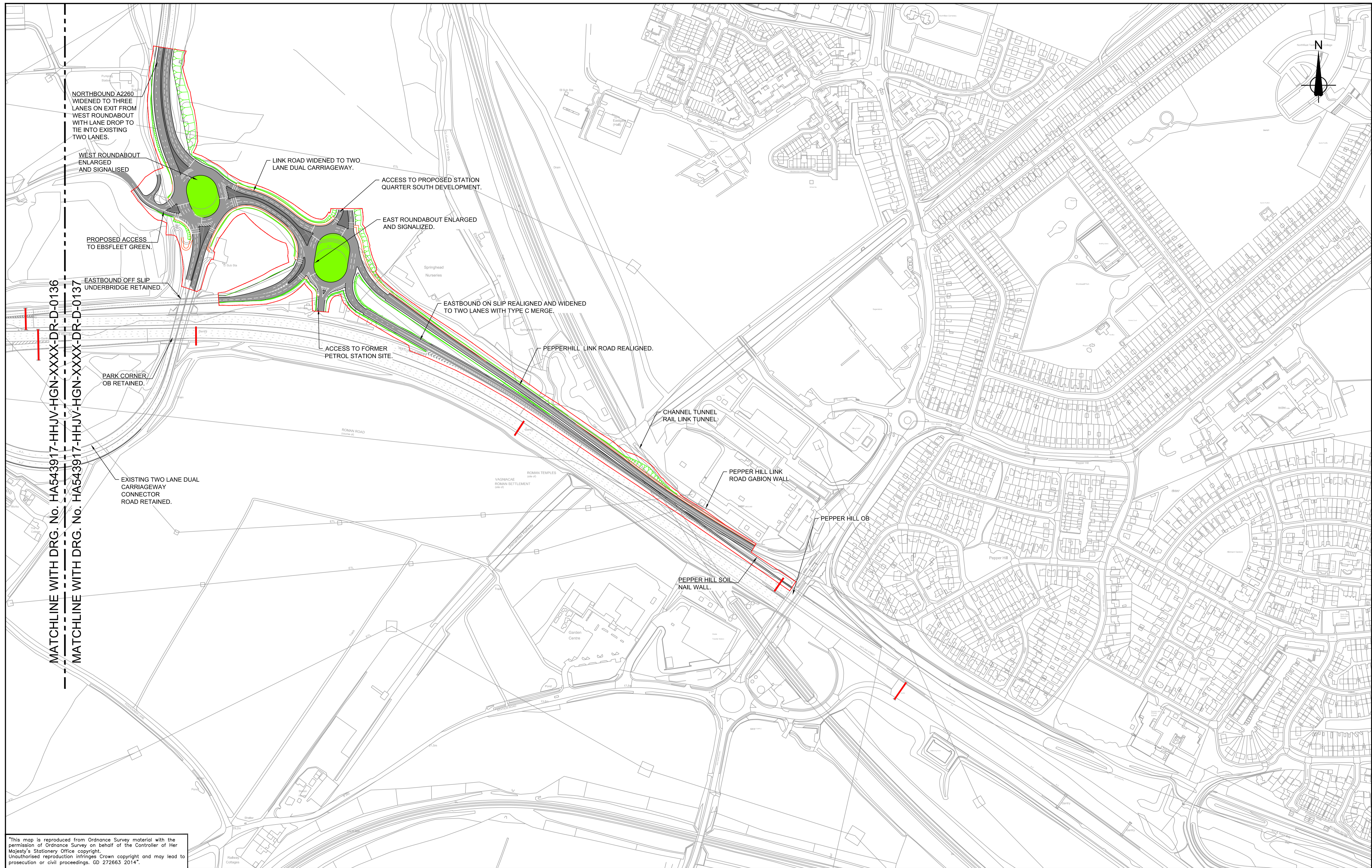
1 : 2500

Client **highways england**
Halcrow Hyder Joint Venture
 Burderop Park
 Swindon, SN4 0QD
 Tel. +44(0)1793 812479

Project **A2 BEAN AND EBBSFLEET JUNCTION IMPROVEMENTS**
 Drawing title **GENERAL LAYOUT BEAN OPTION 5 AND EBBSFLEET OPTION 1 SHEET 2 OF 3**

Status	S3	Revision	P4
Scale	1:2500	Date	24-11-2016
Drawn By	RAVITEJA M.S	Checked By	M.LUDLAM
Approved By	M.EMERY	Originator	HHJV
Project No.	HA PIN 543917	Original Size	A1
Drawing number	HGN-XXXX-DR-D-0136		

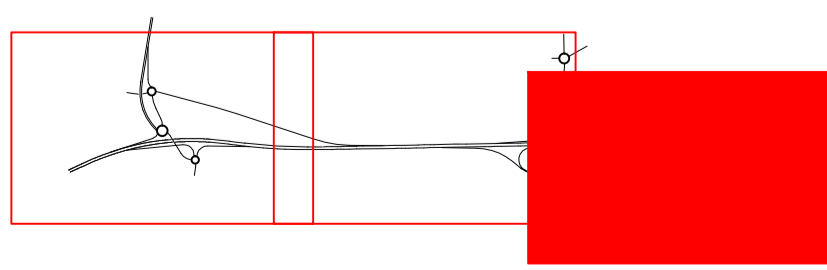
N:\Highways\UKR\B001863-01-A2 Bean and EbsfleetE-Drawings\01-IFP\Working Drawings\HA543917-HJV-HGN-XXXX-DR-D-0135-0137.dwg - 11/24/2016 5:38:25 PM - 0137 - RM100457



MATCHLINE WITH DRG. No. HA543917-HJV-HGN-XXXX-DR-D-0136
 MATCHLINE WITH DRG. No. HA543917-HJV-HGN-XXXX-DR-D-0137

This map is reproduced from Ordnance Survey material with the permission of Ordnance Survey on behalf of the Controller of Her Majesty's Stationery Office copyright. Unauthorised reproduction infringes Crown copyright and may lead to prosecution or civil proceedings. GD 272663 2014.

Rev	Status	Rev. Date	Purpose of revision	Drawn	Chk'd	Appr'd
P4	S3	24-11-2016	MINOR AMENDMENTS	RMS	ML	ME
P1	S3	22-08-2016	FOR COMMENT AND REVIEW	RMS	ML	ME
P2.1	S0	27-06-2016	INTERIM DESIGN FIX C	RMS	ML	ME
P1	S2	14-06-2016	FOR INFORMATION	RMS	ML	ME
P1.1	S0	24-05-2016	FIRST DRAFT	RMS	ML	ME



- SCHEME BOUNDARY
- EXISTING SIGN AND SIGNAL GANTRY RETAINED
- NEW SIGN AND SIGNAL GANTRY
- EXISTING SIGN AND SIGNAL GANTRY REMOVED

0 50 100 150 200 250m

1 : 2500

Client

highways england

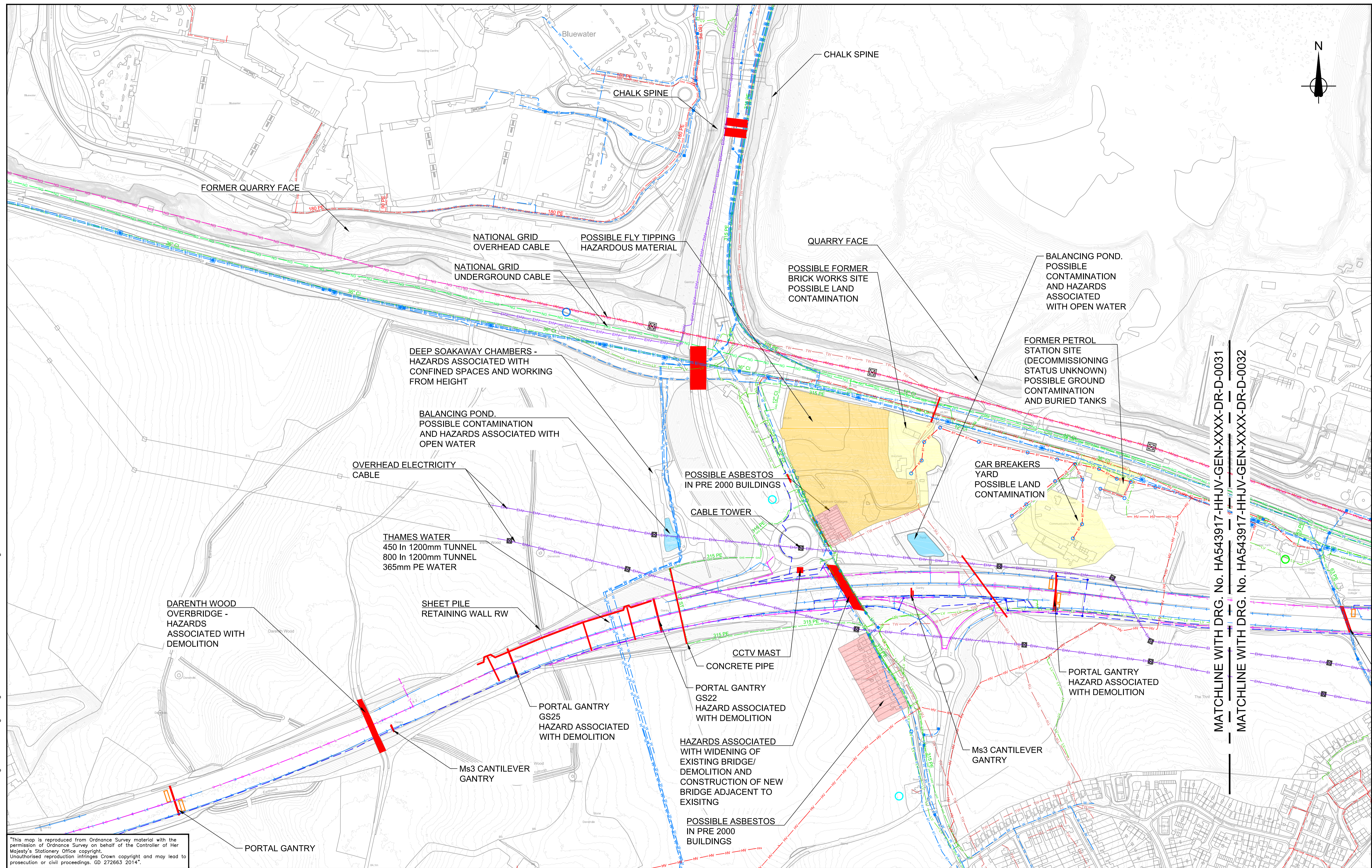
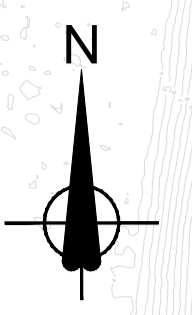
Halcrow Hyder Joint Venture
 Burderop Park
 Swindon, SN4 0GD
 Tel. +44(0)1793 812479

Halcrow **Hyder**

Project **A2 BEAN AND EBBSFLEET JUNCTION IMPROVEMENTS**

Drawing title **GENERAL LAYOUT BEAN OPTION 5 AND EBBSFLEET OPTION 1 SHEET 3 OF 3**

Status	S3	Revision	P4
Scale	1:2500	Date	24-11-2016
Drawn By	RAVITEJA M.S	Checked By	M.LUDLAM
Approved By	M.EMERY	Project No.	HA PIN 543917
Originator	HHJV	Original Size	A1
Drawing number	HGN-XXXX-DR-D-0137		



"This map is reproduced from Ordnance Survey material with the permission of Ordnance Survey on behalf of the Controller of Her Majesty's Stationary Office copyright. Unauthorised reproduction infringes Crown copyright and may lead to prosecution or civil proceedings. GD 272663 2014"

KEY					
—	SOUTHERN GAS - LHP MAIN	—	NATIONAL GRID - UNDERGROUND CABLE	—	VIRGIN MEDIA
—	SOUTHERN GAS - MP MAIN	—	NATIONAL GRID - OVERHEAD CABLE	—	AREA 4 - LIGHTING CABLE
—	BT OPENREACH - UNDERGROUND CABLE	—	UK POWER NETWORKS - EHV	—	AREA 4 - LIGHTING COLUMN
—	BT OPENREACH - OVERHEAD CABLE	—	UK POWER NETWORKS - HV	—	AREA 4 - SURFACE WATER DRAINAGE
—	BT OPENREACH - POLE	—	UK POWER NETWORKS - LV	—	GENESYS - DUCT OR CABLE ROUTE
—	SOUTHERN WATER - FOUL WATER	—	VODAFONE - (Ex Energies)	—	GENESYS - CABINET
—	THAMES WATER - FOUL WATER	—	VODAFONE - (Other licensed Operator)	—	GENESYS - LOOPS
—	THAMES WATER - SURFACE WATER	—	VODAFONE - MAST	—	GENESYS - GANTRY
—	THAMES WATER - WATER MAINS	—	O2 - MAST	—	GENESYS - EMERGENCY TELEPHONE
—	THAMES WATER PUMPING STATION / WATER WORKS	—	H3G/EE - MAST	—	STRUCTURE (SEE DRAWING HA543917-HHJV-SGN-XXXX-DR-Z-1700-1702 FOR DETAILS)

Rev	Status	Rev. Date	Purpose of revision	Drawn	Check'd	Appr'd
P1	S3	28-07-2016	FOR REVIEW AND COMMENTS	RMS	ML	ME
P1.3	S0	08-07-2016	MINOR AMENDMENTS	RMS	ML	ME
P1.1	S0	24-02-2016	FIRST DRAFT	RMS	ML	ME

Client **highways england**

Halcrow Hyder Joint Venture
 Burderop Park
 Swindon, SN4 0QD
 Tel. +44(0)1793 812479

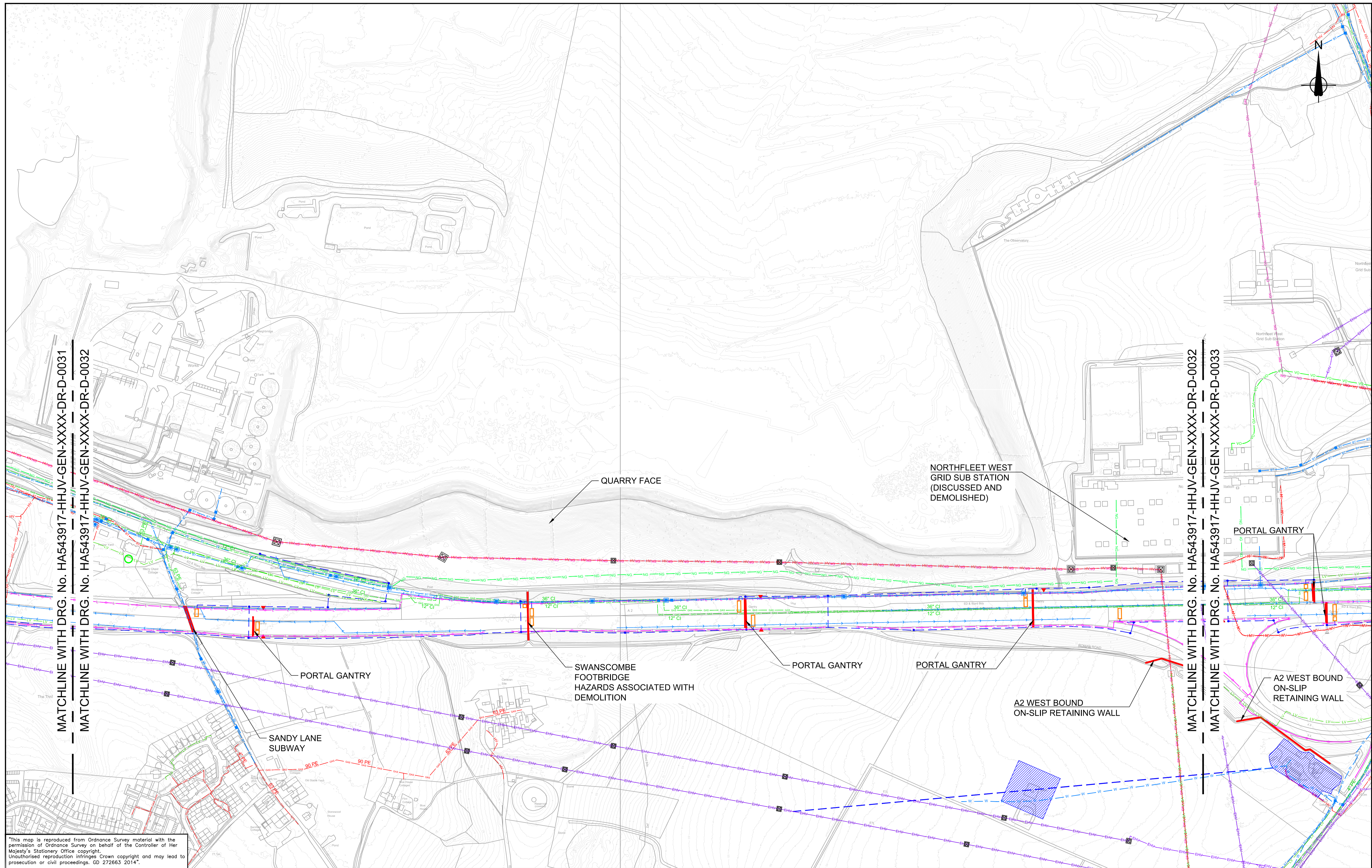
Project **A2 BEAN AND EBSFLEET JUNCTION IMPROVEMENTS**

Drawing title **HAZARD PLAN SHEET 1 OF 4**

Status	S3	Revision	P1
Scale	1:2500	Date	24-02-2016
Drawn By	RAVITEJA M.S	Checked By	M.LUDLAM
Approved By	M.EMERY	Project No.	HA PIN 543917
Originator	HHJV	Original Size	A1
Drawing number GEN-XXXX-DR-D-0031			

N:\Highways\UKR\001883-01-A2 Bean and Ebsfleet\Drawings\01-IFP\Working Drawings\HA543917-HHJV-GEN-XXXX-DR-D-0031-0034.dwg - 7/29/2016 10:47:51 AM - 0031 - RM100457

N:\Highways\UKR\UB001883-01-A2 Bean and Ebbfleet\Drawings\01-IFP\Working Drawings\HA543917-HHJV-GEN-XXXX-DR-D-0031.dwg - 7/29/2016 10:46:07 AM - 0032 - RM000457



This map is reproduced from Ordnance Survey material with the permission of Ordnance Survey on behalf of the Controller of Her Majesty's Stationery Office copyright. Unauthorised reproduction infringes Crown copyright and may lead to prosecution or civil proceedings. GD 272663 2014.

Rev	Status	Rev. Date	Purpose of revision	Drawn	Check'd	Appr'd
P1	S3	28-07-2016	FOR REVIEW AND COMMENTS	RMS	ML	ME
P1.3	S0	08-07-2016	MINOR AMENDMENTS	RMS	ML	ME
P1.1	S0	24-02-2016	FIRST DRAFT	RMS	ML	ME

KEY	DESCRIPTION
—	SOUTHERN GAS - LHP MAIN
—	SOUTHERN GAS - MP MAIN
—	BT OPENREACH - UNDERGROUND CABLE
—	BT OPENREACH - OVERHEAD CABLE
—	BT OPENREACH - POLE
—	SOUTHERN WATER - FOUL WATER
—	THAMES WATER - FOUL WATER
—	THAMES WATER - SURFACE WATER
—	THAMES WATER - WATER MAINS
—	THAMES WATER PUMPING STATION / WATER WORKS
—	NATIONAL GRID - UNDERGROUND CABLE
—	NATIONAL GRID - OVERHEAD CABLE
—	UK POWER NETWORKS - EHV
—	UK POWER NETWORKS - HV
—	UK POWER NETWORKS - LV
—	VODAFONE - (Ex Energies)
—	VODAFONE - (Other Licensed Operator)
—	VODAFONE - MAST
—	O2 - MAST
—	H3G/EE - MAST
—	VIRGIN MEDIA
—	AREA 4 - LIGHTING CABLE
—	AREA 4 - LIGHTING COLUMN
—	AREA 4 - SURFACE WATER DRAINAGE
—	GENESYS - DUCT OR CABLE ROUTE
—	GENESYS - CABINET
—	GENESYS - LOOPS
—	GENESYS - GANTRY
—	GENESYS - EMERGENCY TELEPHONE
—	STRUCTURE (SEE DRAWING HA543917-HHJV-SGN-XXXX-DR-Z-1700-1702 FOR DETAILS)

Client: **highways england**
Halcrow Hyder Joint Venture
 Burderop Park
 Swindon, SN4 0QD
 Tel. +44(0)1793 812479

Project: **A2 BEAN AND EBBSFLEET JUNCTION IMPROVEMENTS**
 Drawing title: **HAZARD PLAN SHEET 2 OF 4**

Status	S3	Revision	P1
Scale	1:2500	Date	24-02-2016
Drawn By	RAVITEJA M.S	Checked By	M.LUDLAM
Approved By	M.EMERY	Project No.	HA PIN 543917
Originator	HHJV	Original Size	A1
Drawing number: GEN-XXXX-DR-D-0032			

MATCHLINE WITH DRG. No. HA543917-HHJV-GEN-XXXX-DR-D-0033

MATCHLINE WITH DRG. No. HA543917-HHJV-GEN-XXXX-DR-D-0034



PEPPERHILL OVERBRIDGE

CTRL

"This map is reproduced from Ordnance Survey material with the permission of Ordnance Survey on behalf of the Controller of Her Majesty's Stationery Office copyright. Unauthorised reproduction infringes Crown copyright and may lead to prosecution or civil proceedings. GD 272663 2014"

KEY					
	SOUTHERN GAS - LHP MAIN		NATIONAL GRID - UNDERGROUND CABLE		VIRGIN MEDIA
	SOUTHERN GAS - MP MAIN		NATIONAL GRID - OVERHEAD CABLE		AREA 4 - LIGHTING CABLE
	BT OPENREACH - UNDERGROUND CABLE		UK POWER NETWORKS - EHV		AREA 4 - LIGHTING COLUMN
	BT OPENREACH - OVERHEAD CABLE		UK POWER NETWORKS - HV		AREA 4 - SURFACE WATER DRAINAGE
	BT OPENREACH - POLE		UK POWER NETWORKS - LV		GENESYS - DUCT OR CABLE ROUTE
	SOUTHERN WATER - FOUL WATER		VODAFONE - (Ex Energies)		GENESYS - CABINET
	THAMES WATER - FOUL WATER		VODAFONE - (Other licensed Operator)		GENESYS - LOOPS
	THAMES WATER - SURFACE WATER		VODAFONE - MAST		GENESYS - GANTRY
	THAMES WATER - WATER MAINS		O2 - MAST		GENESYS - EMERGENCY TELEPHONE
	THAMES WATER PUMPING STATION / WATER WORKS		H3G/EE - MAST		STRUCTURE (SEE DRAWING HA543917-HHJV-SGN-XXXX-DR-Z-1700-1702 FOR DETAILS)

Rev	Status	Rev. Date	Purpose of revision	Drawn	Chkd	Apprv'd
P1	S3	28-07-2016	FOR REVIEW AND COMMENTS	RMS	ML	ME
P1.3	S0	08-07-2016	MINOR AMENDMENTS	RMS	ML	ME
P1.1	S0	24-02-2016	FIRST DRAFT	RMS	ML	ME

Client

Halcrow Hyder Joint Venture
 Burderop Park
 Swindon, SN4 0QD
 Tel. +44(0)1793 812479

Project **A2 BEAN AND EBBSFLEET JUNCTION IMPROVEMENTS**

Drawing title **HAZARD PLAN SHEET 4 OF 4**

Status	S3	Revision	P1
Scale	1:2500	Date	24-02-2016
Drawn By	RAVITEJA M.S	Checked By	M.LUDLAM
Approved By	M.EMERY	Project No.	HA PIN 543917
Originator	HHJV	Original Size	A1
Drawing number	GEN-XXXX-DR-D-0034		

N:\Highways\UKR\B001883-01-A2 Bean and EbbfleetE-Drawings\01-IFP\Working Drawings\HA543917-HHJV-GEN-XXXX-DR-D-0034.dwg - 7/29/2016 10:48:34 AM - 0034 - RM000457