

A19/A184 Testos junction improvement scheme



Introduction

Highways England is a government owned company. We are responsible for the operation, maintenance and improvements to England's motorways and major A roads. This includes delivery of the government's Road Investment Strategy (RIS) commitments, published in 2014 by the Department for Transport.

The RIS outlines how the government plans to invest in the Strategic Road Network (motorways and major A roads) in England over the next 5 years. The RIS commits to improve both the A19/A184 Testos junction and the A19 Downhill Lane junction.

This consultation brochure is in relation to proposed improvements to the A19 Testos junction. It is a statutory consultation on the proposals held in accordance with the Planning Act 2008 in advance of an application for a Development Consent Order (DCO) to authorise construction of the project.

Consultation

We are now proposing to complete preparation of the Testos DCO application, with a target submission date of summer 2017. Before we can submit our application, we wish to consult further on the proposals to provide an update to the 2014 consultation and hear any further views people may have.

The A19 Testos junction improvements form part of a wider strategy to upgrade the A19 through the east of Tyneside. A preferred route was announced by the Secretary of State for Transport in June 2014. Following the preferred route announcement, statutory consultation in accordance with the Planning Act 2008 took place with stakeholders and the local community in autumn 2014. Following this consultation, we undertook a review to identify the feasibility of combining the Testos junction improvements with the Downhill Lane junction improvements. As a result, the DCO application for Testos was deferred whilst we considered options for a combined scheme.

The outcome of the review indicated that the best approach was for the design and construction of the two projects to be carried out together by one team, but with separate DCO applications made for each junction improvement.

This is your opportunity to tell us your thoughts on the proposed scheme and about any changes that have occurred locally in the last two years which may impact on our proposed design.

Scheme update

A consultation exercise was held in spring 2009 on 3 options for the Testos junction improvement. The consultation found an overall preference for the option with the A19 maintained on its existing route, but slightly to the west of the existing roundabout. This option was supported by 83% of respondents. The outcome from this initial consultation was validated with key stakeholders in spring 2014. The process culminated in a preferred route announcement in June 2014.

Following the preferred route announcement, the design was developed further and consultation in accordance with the Planning Act 2008 took place from 13 October to 28 November 2014 on the preferred route. Included within these proposals were options for improving use of the junction for pedestrians, cyclists and horse riders. 3 options were presented for a new layout of footpaths, cycleways, bridleways and highway crossings. The preferred option is included in the scheme plan overleaf.

Following this consultation, we undertook a review to identify the feasibility of combining the Testos junction improvements with the Downhill Lane junction improvements in order to minimise disruption to road users and provide cost efficiencies. This meant that we needed to identify options for improving Downhill Lane junction

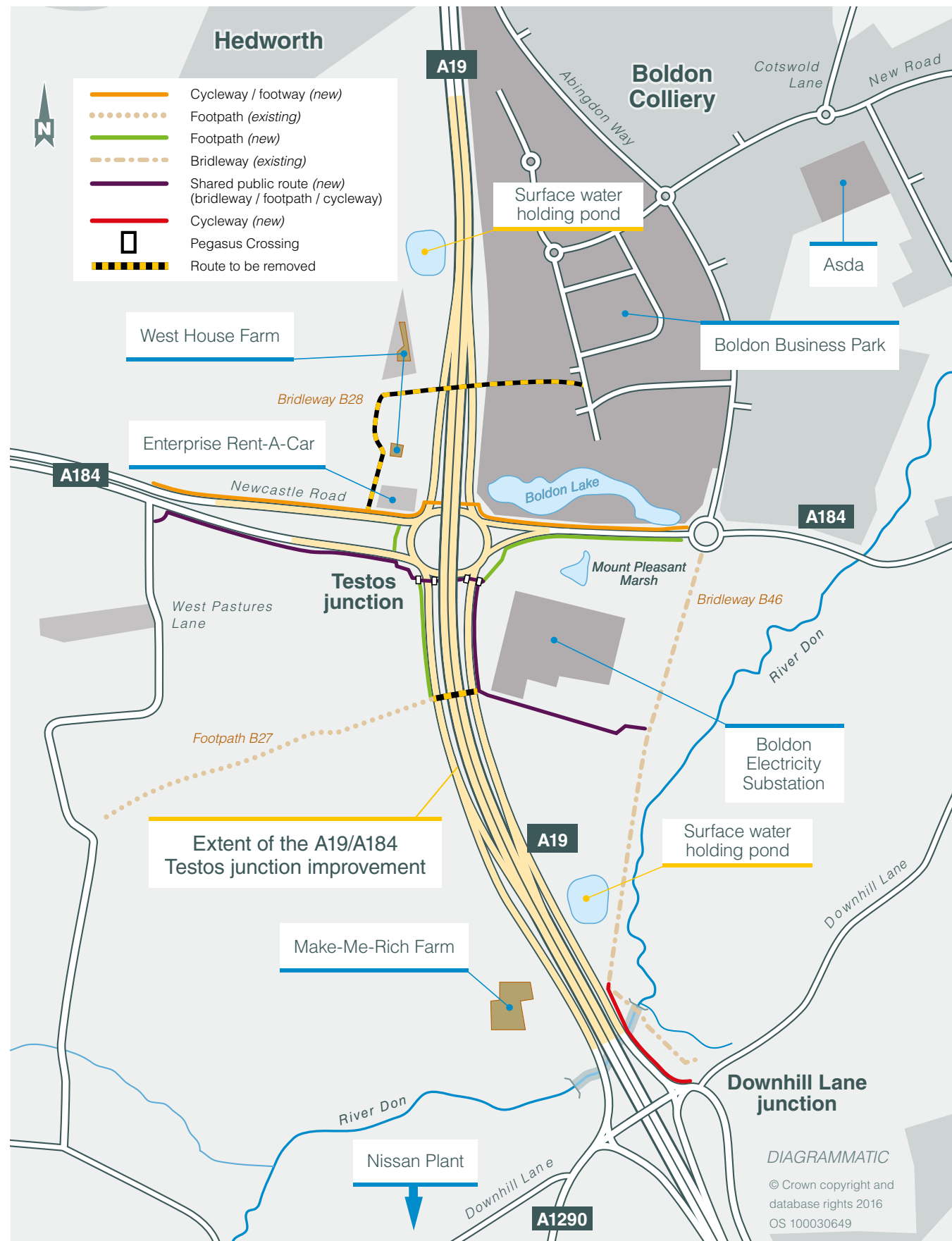
and review the preferred route option for Testos junction to understand what effect the changes at Downhill Lane junction might present.

As a result the DCO application for Testos was deferred whilst we considered options for a combined scheme. The outcome of the review indicated that the best approach was for the design and construction of the two projects to be carried out together by one team, but with separate DCO applications made for each junction improvement.

For the Testos junction, we will be applying for development consent in summer 2017. For the Downhill Lane junction, the preferred route will be announced in the spring/summer of 2017 followed by an application for development consent in 2018.

The consultation will run for **5 weeks**, commencing on **30 January 2017** and closing at **23.59 on 6 March 2017**

Scheme plan



Need for improvement

Testos roundabout is a major junction forming the intersection of the A19 with the A184, south of the Tyne Tunnel entrance at Jarrow.

There is severe congestion at this roundabout at peak times.

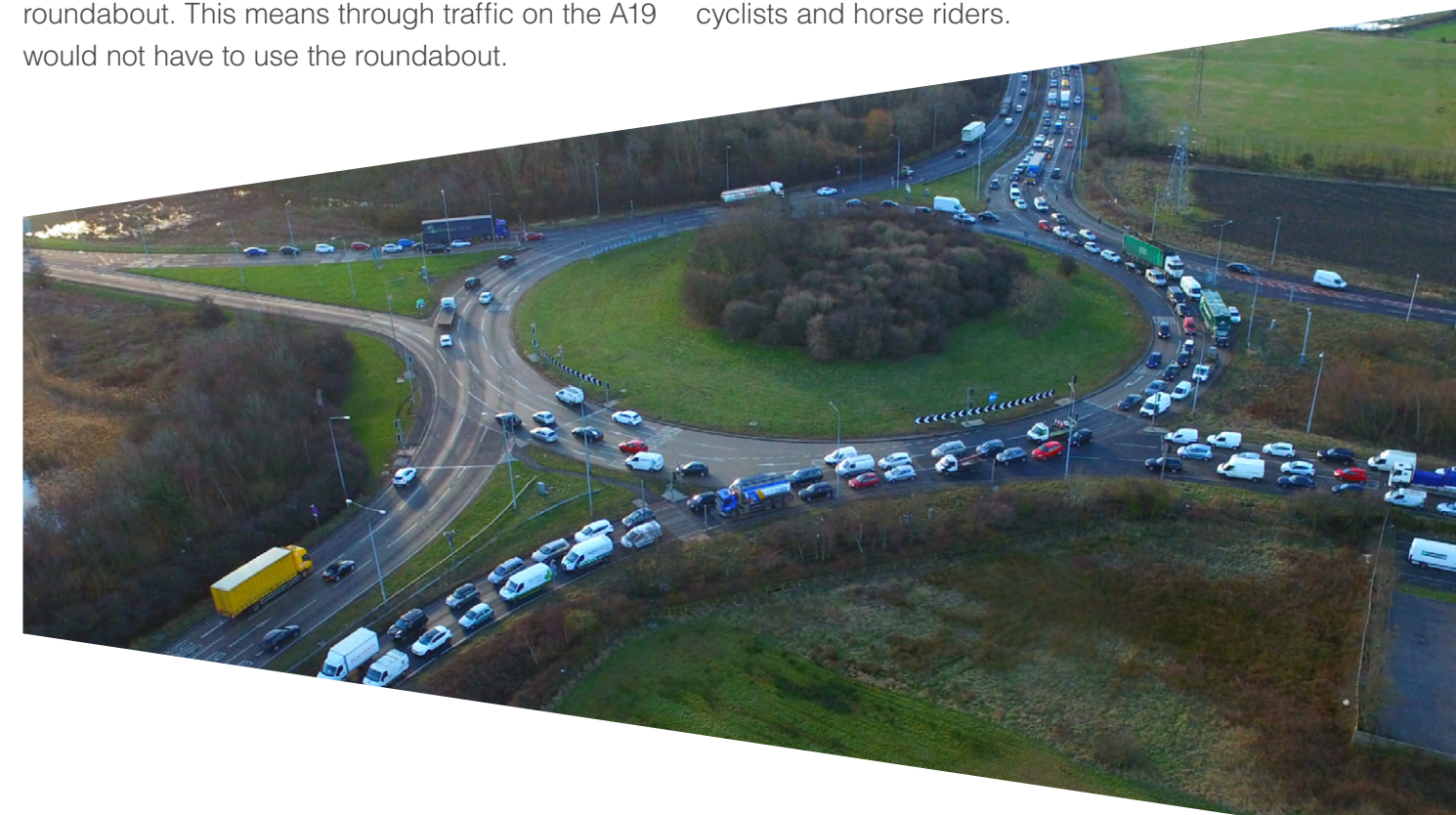
Our proposal would improve the junction by raising the A19 on a flyover and building new slip roads to connect it to the A184 via the Testos roundabout. This means through traffic on the A19 would not have to use the roundabout.

Access between Testos roundabout and Downhill Lane junction would be provided using link roads.

A fly through video of the reconfigured junction is available to view at:

www.highways.gov.uk/a19-testos-downhill-lane

The existing bridleway bridge north of Testos would be removed and new routes through the junction would be provided for pedestrians, cyclists and horse riders.



Construction management

As part of our DCO application we will produce a draft Construction Environmental Management Plan (CEMP). This will outline the control measures we will adopt to minimise the impact of the works on the local environment and communities during construction.

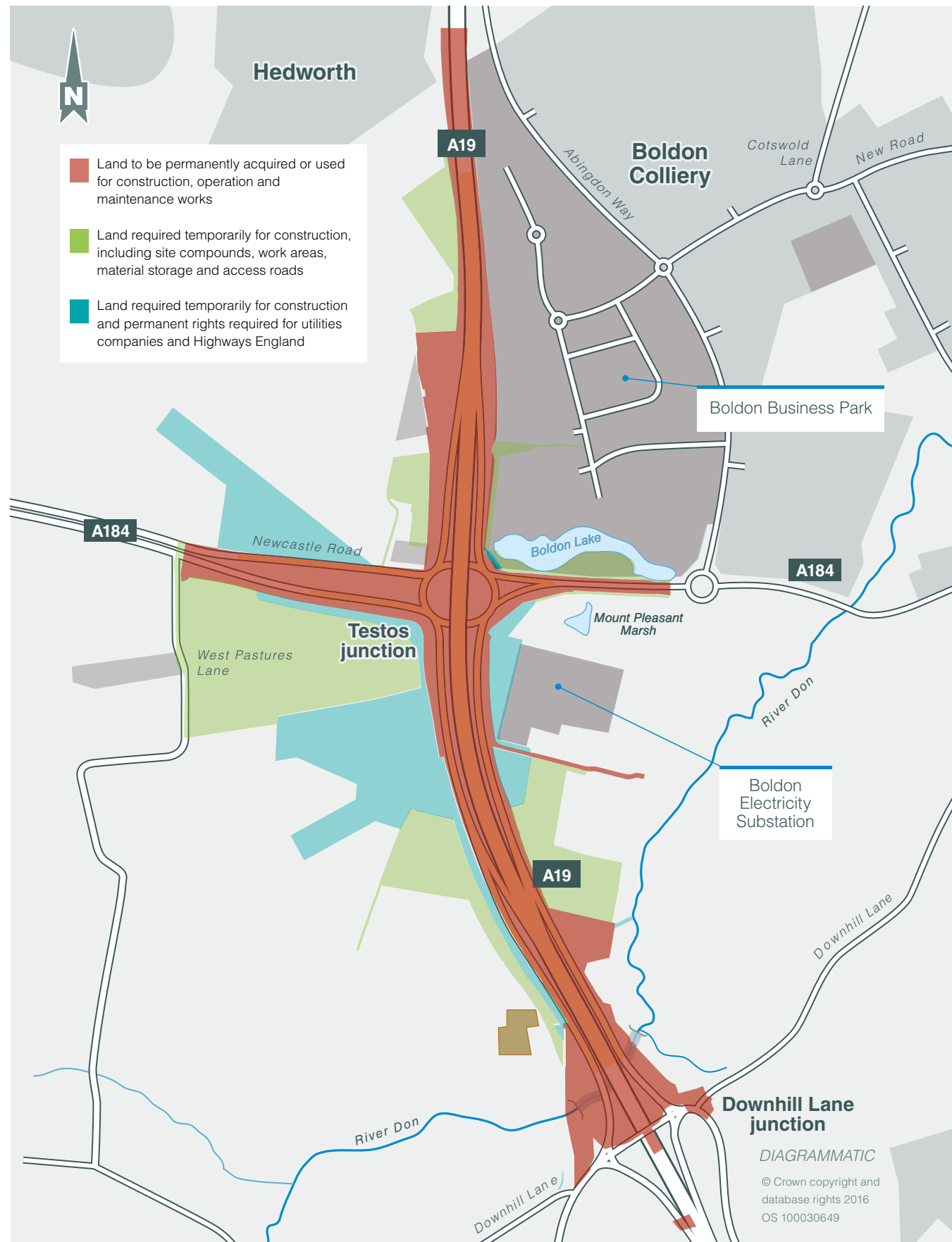
We aim to minimise disruption to road users and will put in place measures to control nuisances such as noise and dust. The work will be phased with the aim of keeping two lanes of traffic flowing in both directions on the A19 at peak times. Temporary traffic management will be installed to separate traffic and other users (e.g. pedestrians and cyclists) from the construction activities and provide safe working areas for our workers.

Construction traffic and machinery will use designated access routes to keep it separate from road users as much as possible and access to local properties and businesses will be maintained.

Some lane closures and full road closures will be required, for example to remove the old bridleway bridge north of Testos roundabout. However, full closures will be well communicated in advance, and signed diversion routes will be put in place. We will employ a Community Relations Manager who will keep you informed of our activities.

Proposed land usage plan

Indicative and subject to change



A19/A184 Testos junction improvement scheme

Public consultation questionnaire

Please tell us your views by completing this questionnaire.

If you're returning this to us by post, please follow the folding instructions on the back page of the questionnaire and pop it in the post.

Please submit your completed questionnaire by 6 March 2017

Please provide us with your name and address. If you'd prefer for your comments to be anonymous, please just provide your postcode.

Name:

Address:

Postcode:

If you want to be kept informed by email about the project please give us your email address below:

.....

If you are responding on behalf of an organisation, please tell us the name of the organisation and your role in it:

Name of organisation:

Your role in the organisation:

1. Do you agree or disagree with the proposal to improve the A19 Testos junction?

Agree Disagree Neither agree nor disagree

2. Do you have any comments on our proposals to improve the A19 Testos junction?

.....
.....
.....
.....
.....

3. Do you agree that our proposed environmental mitigations are sufficient?

Agree Disagree Neither agree nor disagree

4. Do you have any other comments about our proposed environmental mitigation?

.....
.....
.....
.....
.....

5. Do you have any comments on the documents published with this consultation, including the draft Development Consent Order, the draft land and works plans?

.....
.....
.....
.....
.....

6. How do you normally travel on the A19 Testos junction? Tick all that apply

Car/ van HGV Bus Motorcycle On foot Bicycle On a horse I don't use this junction

Other (please state)

.....

7. What is your relationship to A19 Testos junction and the surrounding area ? Tick all that apply

I live in the local area and use the A19 Testos junction to get to/from home
 I work in the local area and use the A19 Testos junction to get to/from work
 I use the A19 at Testos junction to get to local leisure facilities
 I use the A19 at Testos junction to travel through Tyne and Wear, for example between Newcastle and Sunderland

Other (please state)

.....

8. How often do you use this junction?

Daily More than once a week Weekly
 More than once a month Monthly Less than once a month

This section is optional but we'd be grateful if you'd tell us a little about yourself so that we understand more about the community we serve. We will not share your personal information nor will we contact you or use it for any other purpose.

i. Your gender?

Male Female Prefer not to say

ii. Your age?

16-24 25-34 35-44 45-54 55-64 65+

iii. Do you consider yourself to have a disability?

Yes No Prefer not to say

Thank you for taking the time to complete this questionnaire.

Information provided in response to this consultation, including personal information, may be published or disclosed in accordance with the access to information regimes (these are primarily the Freedom of Information Act 2000 (FOIA), the Data Protection Act 1998 (DPA) and the Environmental Information Regulations 2004).

If you want the information that you provide to be treated as confidential, please be aware that, under the FOIA, there is a statutory Code of Practice with which public authorities must comply and which deals, amongst other things, with obligations of confidence. In view of this it would be helpful if you could explain to us why you regard the information you have provided as confidential. If we receive a request for disclosure of the information we will take full account of your explanation, but we cannot give an assurance that confidentiality can be maintained in all circumstances. An automatic confidentiality disclaimer generated by your IT system will not, of itself, be regarded as binding on Highways England.. Highways England will process your personal data in accordance with the DPA and in the majority of circumstances; this will mean that your personal data will not be disclosed to third parties. Confidential responses will be included in any statistical summary of number of comments and views expressed.

Regional and local benefits

The scheme is being designed with the following key objectives in mind:

Supporting economic growth

The scheme forms part of a wider strategy to upgrade the A19 through the east of Tyneside which includes the A19 Coast Road improvement and A19 Downhill Lane junction improvement. These junction improvements, along with the A19 Testos junction improvement, will support regeneration and further developments in the area, while also complementing improvements to the local network such as the second Tyne crossing.

Improved environment

The environmental effects resulting from the scheme have been considered during previous stages of scheme development. Measures to mitigate potential effects on the local environment have been identified and will be further refined as the scheme design is finalised. Opportunities to improve the local environment are also being sought as part of the final scheme proposals.

A safe and serviceable network

The scheme aims to reduce accidents, provide safer crossings for non-motorists and improve journey time reliability, leading to a reduction in driver stress.

An accessible and integrated network

The proposed scheme will provide improved connectivity with the local road network. Access and safety for pedestrians, cyclists and horse riders will be enhanced. We will continue to work with the local access forum and user groups as we progress towards construction.

A more free-flowing network

The traffic model used to design the scheme predicts that road users travelling through the junction will benefit significantly from reduced journey times as a result of the proposal.

Fold B



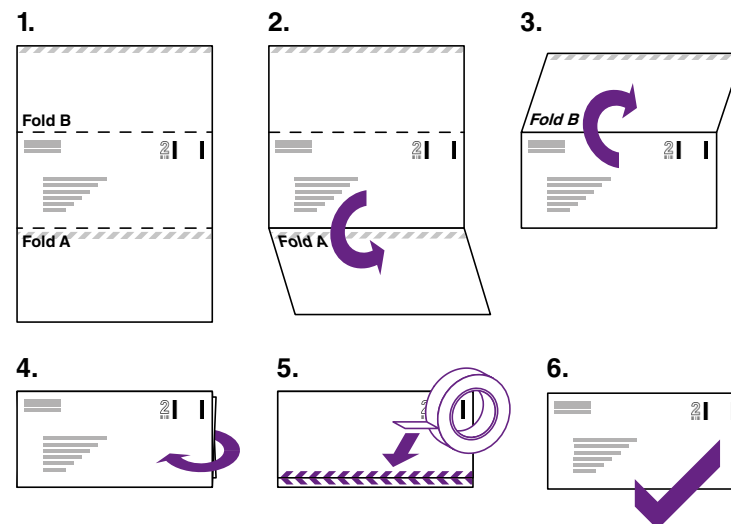
Freepost RSAS-ZGKK-CSUL
A19/A184 Testos junction
improvement scheme
Lateral
8 City Walk
Leeds
LS11 9AT

Fold A

Folding instructions

Once you've completed the questionnaire please follow these instructions before returning it to us:

1. With the return address facing you...
2. fold the bottom part backwards along Fold A;
3. fold the top part backwards along Fold B;
4. turn the folded questionnaire over; and
5. secure it by sticking clear tape along the length of hatched area.
6. There's no need for a stamp, just pop it in the post.



Environmental considerations

The scheme is being designed to minimise the effect on the environment.

We will be completing a full statutory Environmental Impact Assessment (EIA) for the project, which is currently in its early stages. A detailed Environmental Statement (ES) will be submitted as part of the Development Consent Order application.

The aims of the EIA are to work out the effects the proposed scheme would have on the environment in order to influence the design and to reduce

negative environmental effects. It will also identify mitigation measures for any effects that remain.

We have also prepared a document called a Preliminary Environmental Information report. This provides information on the likely environmental effects and potential mitigation measures envisaged for the proposed scheme, so that you can respond to this consultation in a well-informed way. A copy of this is available on our website:

www.highways.gov.uk/a19-testos-downhill-lane

The EIA covers a wide range of environmental themes:

Air quality

We will consider the health related issues of local and regional air quality and the global issue of climate change. We will also consider emissions that may arise from the project during construction and once open to traffic.

Noise and vibration

Traffic flow data and information on construction methodology will be used to assess the noise and vibration impacts of the project during construction and once open to traffic.

Cultural heritage

We will consider archaeological sites, historic buildings and landscapes. We will consider and manage direct impacts as well as how the project affects the settings and landscapes of potentially important local assets.

Landscape and visual amenity

We will look at the effects on the local landscape and on the quality of views.

Ecology and nature conservation

We will consider the effects on ecologically important sites, protected species and other sensitive species including bats, water voles and otters.

Road drainage and the water environment

We will assess the effects on surface water, groundwater and flood risk during construction and operation.

Geology and soils

We will consider the disturbance of groundwater, the impact on soil quality and the disturbance of any contaminated land.

Waste and material

We will identify opportunities where possible to reduce, reuse or recycle waste.

People and communities

We will consider safety, journey time, congestion and accessibility for everyone along the route, including vehicle travellers, pedestrians, cyclists and horse riders. We will consider the effects of the scheme on land or other assets owned or used by the community. We are also looking at the effects on privately owned assets such as farmland.

This topic will also cover socio-economic aspects such as the effect of the scheme on local employment during construction and operation.



Consultation materials

Alongside this consultation brochure, to help inform your understanding of the proposals we have produced the following:

- A more detailed scheme plan
- Draft DCO and draft land and works plans, which outline the extent of land required permanently and temporarily
- Preliminary Environmental Information report
- Statement of Community Consultation
- Fly through video

These can all be found on our website:

www.highways.gov.uk/a19-testos-downhill-lane

Next steps

Once the consultation has closed on **6 March 2017**, comments received will be taken into account and will inform, if necessary and where possible, further refinements to the project and our approach to environmental mitigation. All responses will be analysed and compiled into a report which will set out the consultation carried out, a summary of responses received and how those responses have

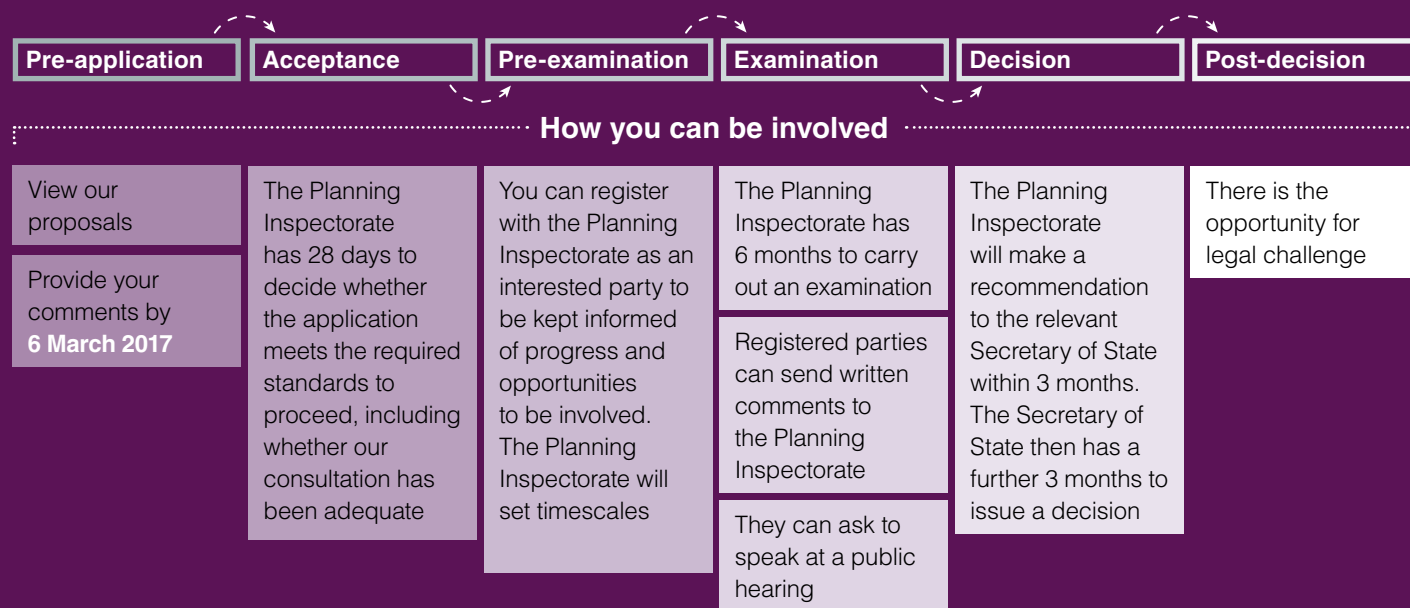
influenced our proposals. The consultation report will form part of our application for a Development Consent Order (DCO) and will also be available following submission of the application. We propose to submit the application for a DCO in **summer 2017** and provided it is granted we estimate that works will commence winter **2018/2019**.

The planning process

The scheme is classed as a Nationally Significant Infrastructure Project (NSIP) under the Planning Act 2008. As such, we are required to make an application for a Development Consent Order (DCO) in order to obtain permission to construct the scheme. The application will be made to the Planning Inspectorate who will examine the application and make a recommendation to the

Secretary of State for Transport who will make the decision on whether or not the project should go ahead. We currently intend to make our application in summer 2017. There are set opportunities for you to be involved in a DCO scheme.

The Planning Act 2008 process for Nationally Significant Infrastructure Projects



How to respond

You can respond using one of the following channels, which have been set up for the specific purpose of this consultation:



Online by following the links on www.highways.gov.uk/a19-testos-downhill-lane



Email your response to: a19testosjunctionimp@highwaysengland.co.uk



Post your response using the freepost details provided or write to us at:

**A19 Testos and Downhill Lane team,
Freepost RSAS-ZGKK-CSUL
Highways England,
Lateral, 8 City Walk,
Leeds LS11 9AT**



A hard copy response form can be found in this document, or you can download a questionnaire at: www.highways.gov.uk/a19-testos-downhill-lane



If you have any questions about this consultation, please contact the project team using any of these details or by calling:

0300 470 2313 or 0300 470 2683 (9am to 5pm, Monday to Friday)

All responses should be returned by **6 March 2017**

There are a number of venues where you can find further copies of this brochure and questionnaire during the consultation period. These venues are as follows:

- **The Word Library**
The Word, 45 Market Place, South Shields, NE33 1DX
- **Washington Library**
Independence Square, Washington, NE38 7RZ
- **Jarrow Library**
Cambrian Street, Jarrow, NE32 3QN
- **East Boldon Library**
Boker Lane, East Boldon, NE36 0RY
- **Boldon Village Hall**
Asda Complex/North Rd, Boldon Colliery, NE35 9AR
- **Library at Hebburn Central**
Glen Street, Hebburn, NE31 1AB
- **Quadrus Centre**
Woodstock Way, Boldon Business Park, NE35 9PF
- **Bunny Hill Customer Service Centre**
Hylton Lane, Sunderland, SR5 4BW
- **Hedworthfield Community Centre**
Cornhill, Jarrow, NE32 4QD

If you need help accessing this or any other Highways England information, please call **0300 123 5000** and we will help you.

© Crown copyright 2017.

You may re-use this information (not including logos) free of charge in any format or medium, under the terms of the Open Government Licence. To view this licence: visit www.nationalarchives.gov.uk/doc/open-government-licence/ write to the **Information Policy Team, The National Archives, Kew, London TW9 4DU**, or email psi@nationalarchives.gsi.gov.uk.

This document is also available on our website at www.gov.uk/highways

If you have any enquiries about this publication email info@highwaysengland.co.uk or call **0300 123 5000***. Please quote the Highways England publications code **PR186/16**.

Highways England creative job number **N160355**

*Calls to 03 numbers cost no more than a national rate call to an 01 or 02 number and must count towards any inclusive minutes in the same way as 01 and 02 calls. These rules apply to calls from any type of line including mobile, BT, other fixed line or payphone. Calls may be recorded or monitored.

Registered office Bridge House, 1 Walnut Tree Close, Guildford GU1 4LZ
Highways England Company Limited registered in England and Wales number 09346363