

**A12 Chelmsford to A120 widening scheme**

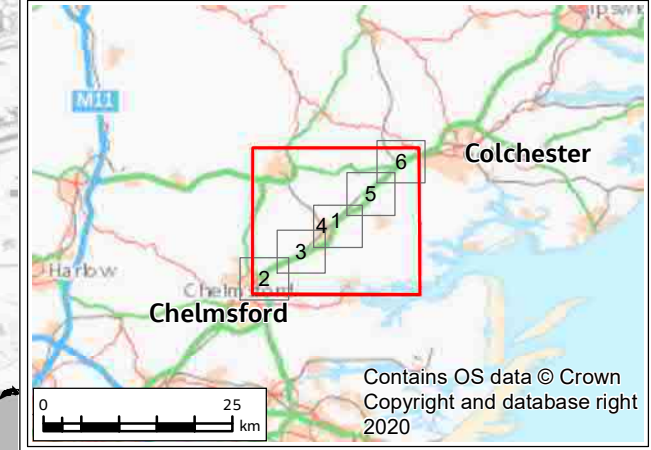
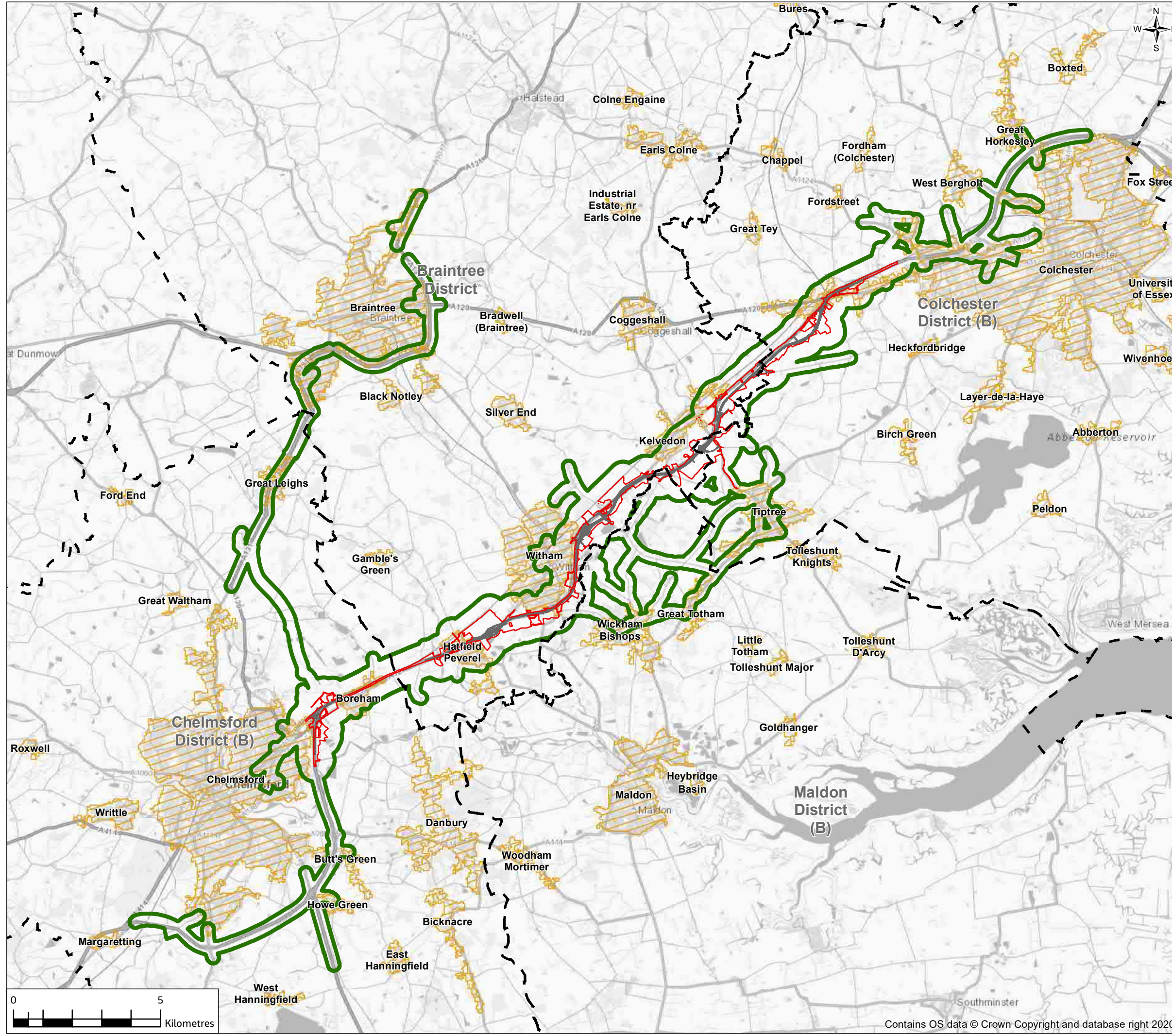
**PRELIMINARY ENVIRONMENTAL  
INFORMATION REPORT**

**CHAPTER 13 – POPULATION AND HEALTH  
FIGURES**



**FIGURE 13.1**

- Legend**
- Provisional Order Limits
  - Proposed Scheme
  - Human health study area (indicative)
  - District boundary
  - Built up area (source: ONS Census 2011)



PO3	13/05/21	For consultation	JC	MO	JW	SG
Rev.	Rev. Date	Purpose of revision	Drawn	Check'd	Rev'd	Appr'd
Contractor			Designer			

Client

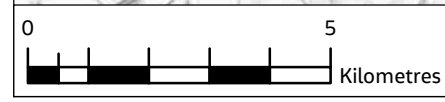
Project

**A12 CHELMSFORD TO A120 WIDENING SCHEME**

Drawing Title

**PEIR  
POPULATION AND HEALTH CONTEXT  
SHEET 1 OF 6**

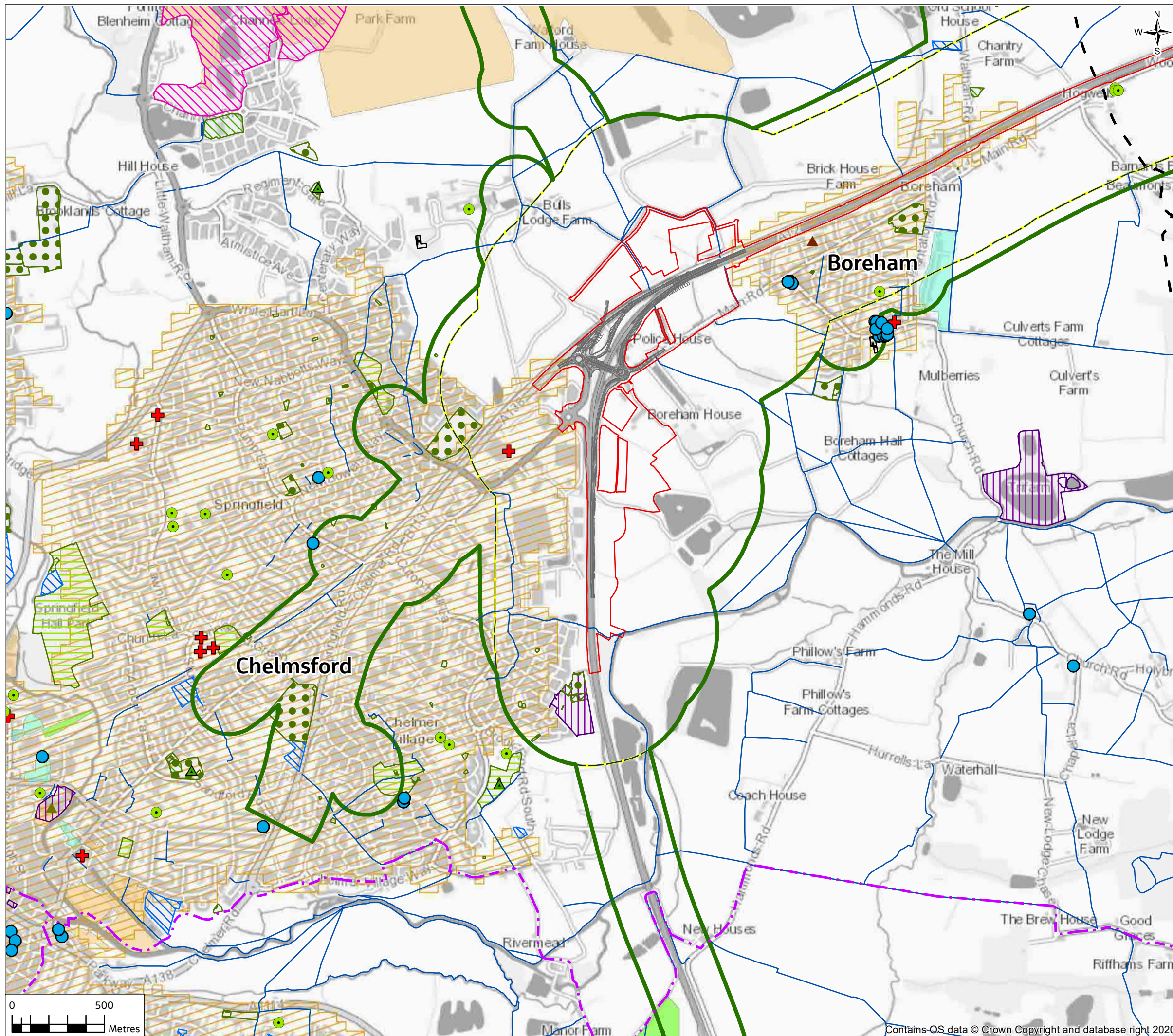
Drawing Status	S4 - SUITABLE FOR STAGE APPROVAL	
Scale @ A3	1:125000	DO NOT SCALE
Jacobs No.	B36601D1	Rev P03
Client No.	HE551497	
Drawing Number	HE551497-JAC-ENM-SCHW-SK-GI-0001	



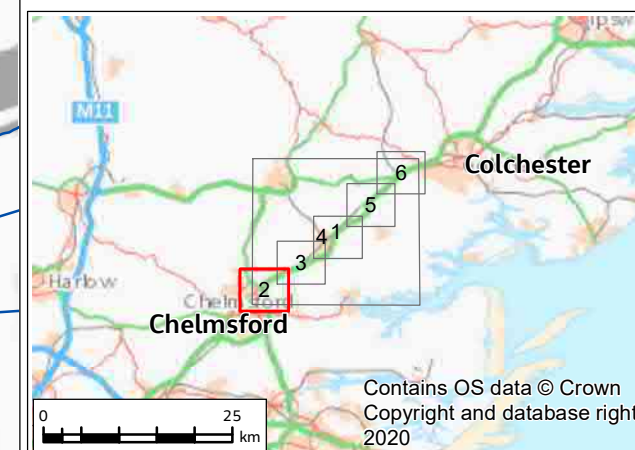
© Copyright 2021 Jacobs U.K. Limited. The concepts and information contained in this document are the property of Jacobs. Use or copying of this document in whole or in part without the written permission of Jacobs constitutes an infringement of copyright. Limitation: This drawing has been prepared on behalf of, and for the exclusive use of Jacobs' Client, and is subject to, and issued in accordance with, the provisions of the contract between Jacobs and the Client. Jacobs accepts no liability or responsibility whatsoever for, or in respect of, any use of, or reliance upon, this drawing by any third party.



FIGURE 13.1



- Legend**
- Provisional Order Limits
  - Proposed Scheme
  - Human health study area (indicative)
  - Land use and access study area (500m)
  - District boundary
  - Schools and Nurseries
  - ▲ Leisure centres
  - Church hall
  - + GP surgeries/medical centres and hospitals
  - ▲ Public hall
  - ▲ Public parks
  - National cycle routes
  - Public Right of Way
  - Built up area (source: ONS Census 2011)
  - Allotments or community growing spaces
  - Bowling green
  - + Cemetery
  - Golf course
  - Other sports facility
  - Play space
  - Public park or garden
  - Tennis court
- Allocations: Chelmsford Local Plan 2013-2036 (Adopted May 2020)**
- Employment
  - Residential
  - Mixed Use
- Open Greenspace Sites**
- Allotments or community growing spaces
  - Bowling green



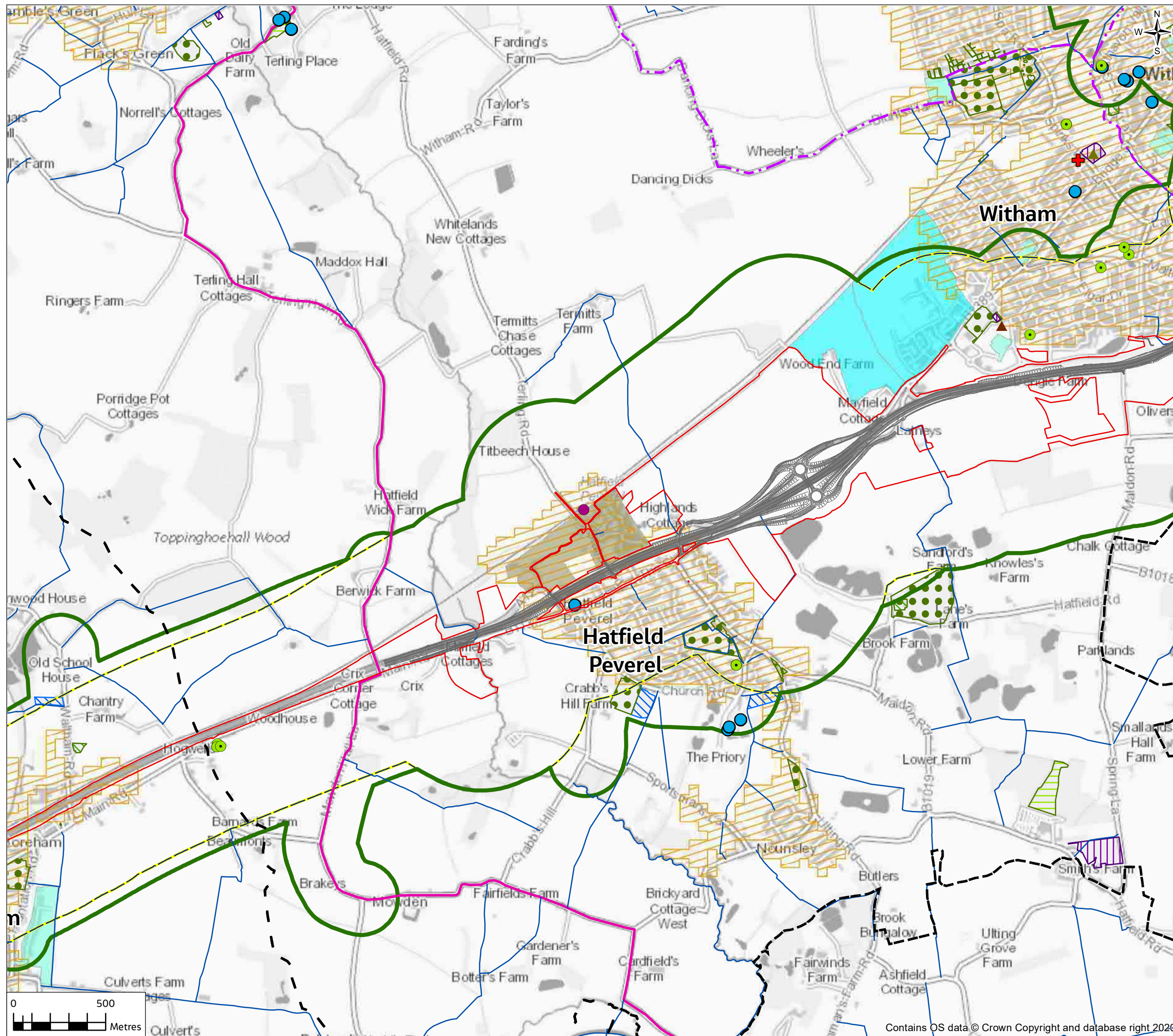
PO3	13/05/21	For consultation	JC	MO	JW	SG
Rev.	Rev. Date	Purpose of revision	Drawn	Check'd	Rev'd	Appr'd
Contractor			Designer			
			 Cottons Centre, Cottons Lane, London, SE1 2QG, UK. Tel: +44 (0)20 3980 2000 www.jacobs.com			
Client						
Project						
A12 CHELMSFORD TO A120 WIDENING SCHEME						
Drawing Title						
PEIR POPULATION AND HEALTH CONTEXT SHEET 2 OF 6						
Drawing Status						
S4 - SUITABLE FOR STAGE APPROVAL						
Scale @ A3	1:20000					DO NOT SCALE
Jacobs No.	B36601D1					Rev P03
Client No.	HE551497					
Drawing Number						
HE551497-JAC-ENM-SCHW-SK-GI-0002						



© Copyright 2021 Jacobs U.K. Limited. The concepts and information contained in this document are the property of Jacobs. Use or copying of this document in whole or in part without the written permission of Jacobs constitutes an infringement of copyright. Limitation: This drawing has been prepared on behalf of, and for the exclusive use of Jacobs' Client, and is subject to, and issued in accordance with, the provisions of the contract between Jacobs and the Client. Jacobs accepts no liability or responsibility whatsoever for, or in respect of, any use of, or reliance upon, this drawing by any third party.



**FIGURE 13.1**



**Legend**

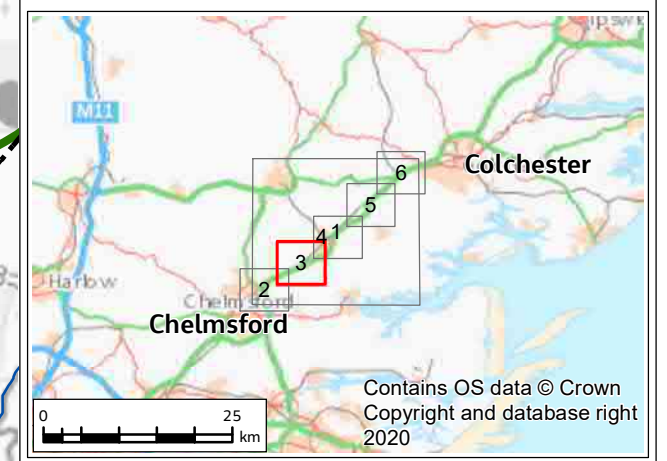
- Provisional Order Limits
- Proposed Scheme
- Human health study area (indicative)
- Land use and access study area (500m)
- District boundary
- Schools and Nurseries
- ▲ Leisure centres
- Railway station
- Church hall
- + GP surgeries/medical centres and hospitals
- ▲ Public hall
- National cycle routes
- Regional cycle routes
- Public Right of Way
- Built up area (source: ONS Census 2011)
- Open Greenspace Sites
- Allotments or community growing spaces
- Bowling green
- Other sports facility
- Play space
- Public park or garden

**Allocations: Chelmsford Local Plan 2013-2036 (Adopted May 2020)**

- Residential

**Allocations: Braintree Publication Draft Local Plan (2017)**

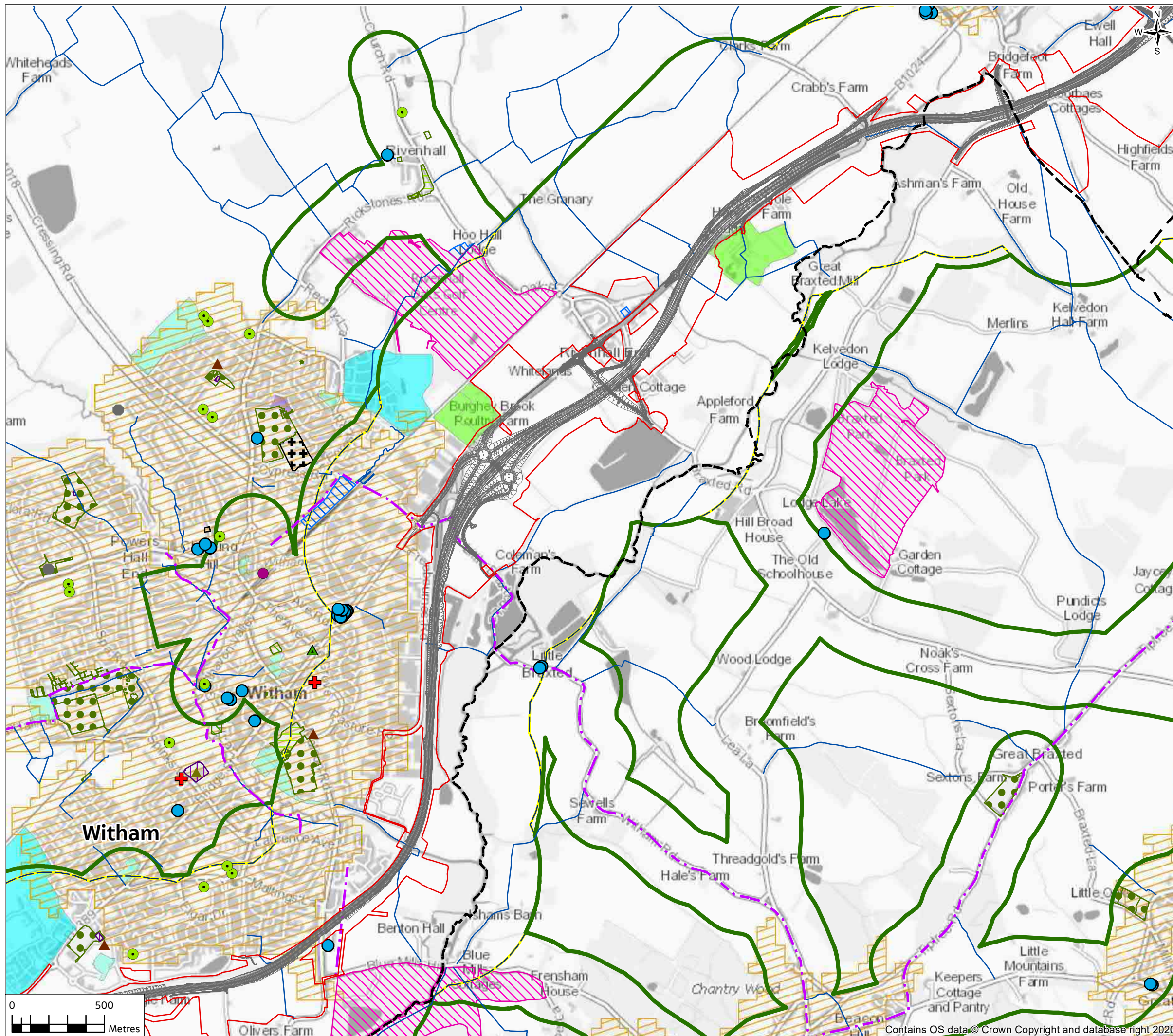
- Comprehensive Redevelopment Area
- Residential
- Strategic Growth Location



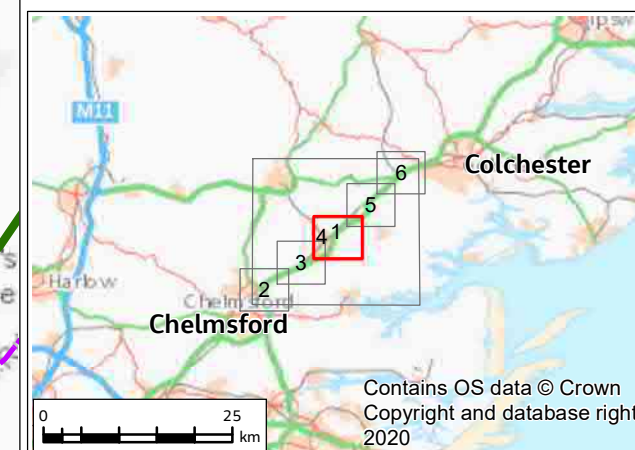
P03	13/05/21	For consultation	JC	MO	JW	SG
Rev.	Rev. Date	Purpose of revision	Drawn	Check'd	Rev'd	Appr'd
Contractor		Designer				
		 Cottons Centre, Cottons Lane, London, SE1 2QG, UK. Tel: +44 (0)20 3980 2000 www.jacobs.com				
Client						
Project						
A12 CHELMSFORD TO A120 WIDENING SCHEME						
Drawing Title						
PEIR POPULATION AND HEALTH CONTEXT SHEET 3 OF 6						
Drawing Status						
S4 - SUITABLE FOR STAGE APPROVAL						
Scale @ A3	1:20000					DO NOT SCALE
Jacobs No.	B36601D1					Rev P03
Client No.	HE551497					
Drawing Number						
HE551497-JAC-ENM-SCHW-SK-GI-0003						



FIGURE 13.1

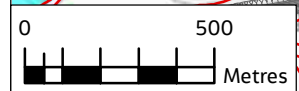


- Legend**
- Provisional Order Limits
  - Proposed Scheme
  - Human health study area (indicative)
  - Land use and access study area (500m)
  - District boundary
  - Schools and Nurseries
  - Leisure centres
  - Railway station
  - Church hall
  - GP surgeries/medical centres and hospitals
  - Public hall
  - Public parks
  - Playground
  - National cycle routes
  - Public Right of Way
  - Built up area (source: ONS Census 2011)
  - Open Greenspace Sites**
    - Allotments or community growing spaces
    - Bowling green
    - Cemetery
    - Golf course
    - Other sports facility
    - Play space
    - Public park or garden
  - Allocations: Braintree Publication Draft Local Plan (2017)**
    - Business Use
    - Employment
    - Residential
    - Strategic Growth Location



P03	13/05/21	For consultation	JC	MO	JW	SG
Rev.	Rev. Date	Purpose of revision	Drawn	Check'd	Rev'd	Appr'd
Contractor			Designer			
			 Cottons Centre, Cottons Lane, London, SE1 2QG, UK. Tel: +44 (0)20 3980 2000 www.jacobs.com			
Client						
Project						
A12 CHELMSFORD TO A120 WIDENING SCHEME						
Drawing Title						
PEIR POPULATION AND HEALTH CONTEXT SHEET 4 OF 6						
Drawing Status						
S4 - SUITABLE FOR STAGE APPROVAL						
Scale @ A3	1:20000				DO NOT SCALE	
Jacobs No.	B36601D1				Rev P03	
Client No.	HE551497					
Drawing Number						
HE551497-JAC-ENM-SCHW-SK-GI-0004						

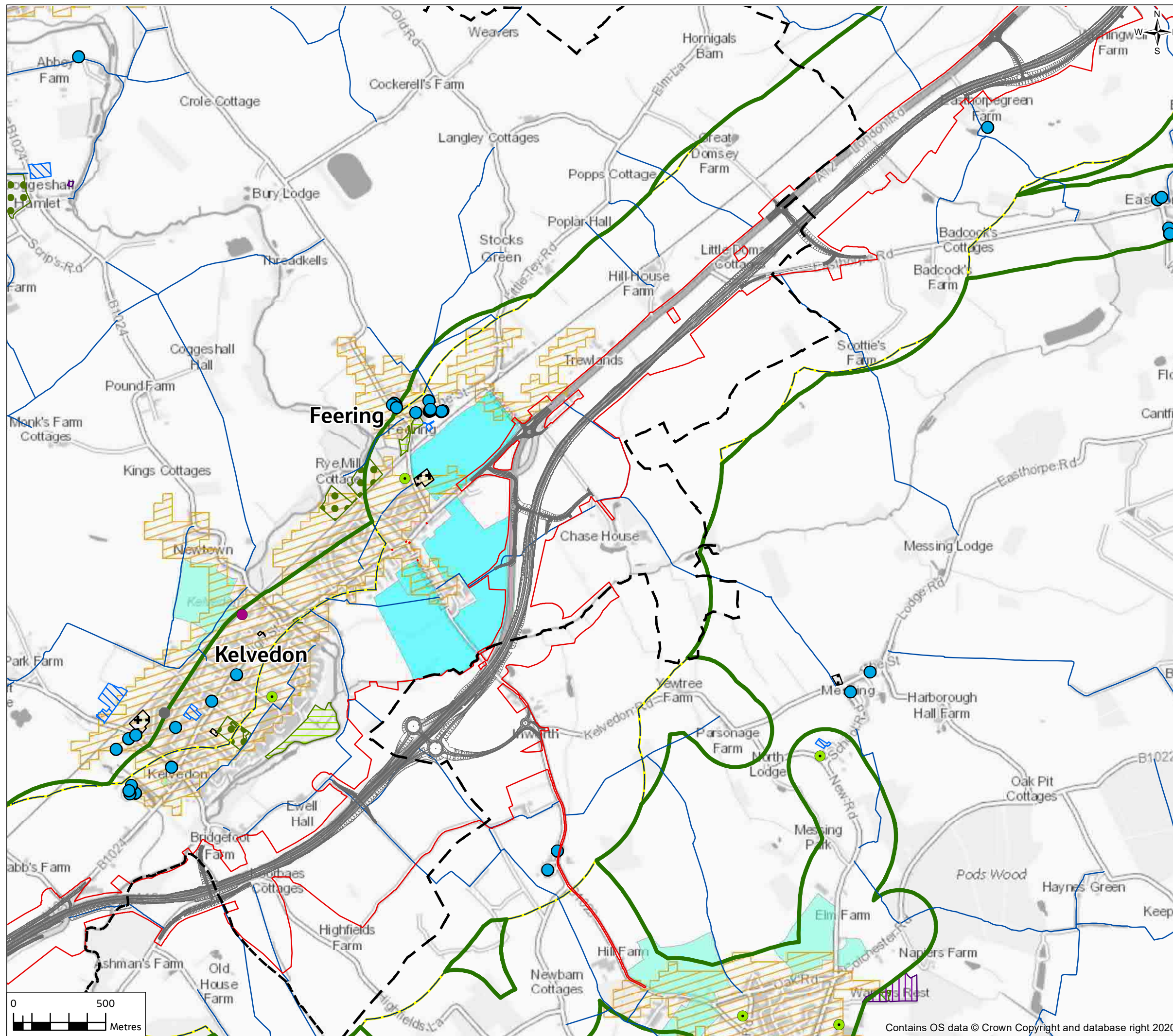
© Copyright 2021 Jacobs U.K. Limited. The concepts and information contained in this document are the property of Jacobs. Use or copying of this document in whole or in part without the written permission of Jacobs constitutes an infringement of copyright. Limitation: This drawing has been prepared on behalf of, and for the exclusive use of Jacobs' Client, and is subject to, and issued in accordance with, the provisions of the contract between Jacobs and the Client. Jacobs accepts no liability or responsibility whatsoever for, or in respect of, any use of, or reliance upon, this drawing by any third party.



Contains OS data © Crown Copyright and database right 2020



**FIGURE 13.1**

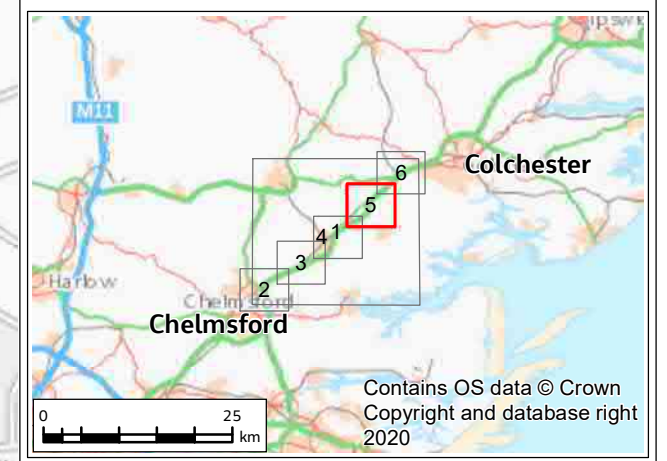


**Legend**

- Provisional Order Limits
- Proposed Scheme
- Human health study area (indicative)
- Land use and access study area (500m)
- District boundary
- Schools and Nurseries
- Church hall
- Playground
- Public Right of Way
- Built up area (source: ONS Census 2011)
- Public park or garden
- Tennis court
- Allocations: Colchester Local Plan 2017 – 2033 (Publication Draft, June 2017)
- Residential
- Allocations: Braintree Publication Draft Local Plan (2017)
- Residential
- Specialist Housing
- Strategic Growth Location

**Open Greenspace Sites**

- Allotments or community growing spaces
- Bowling green
- Cemetery
- Other sports facility
- Play space

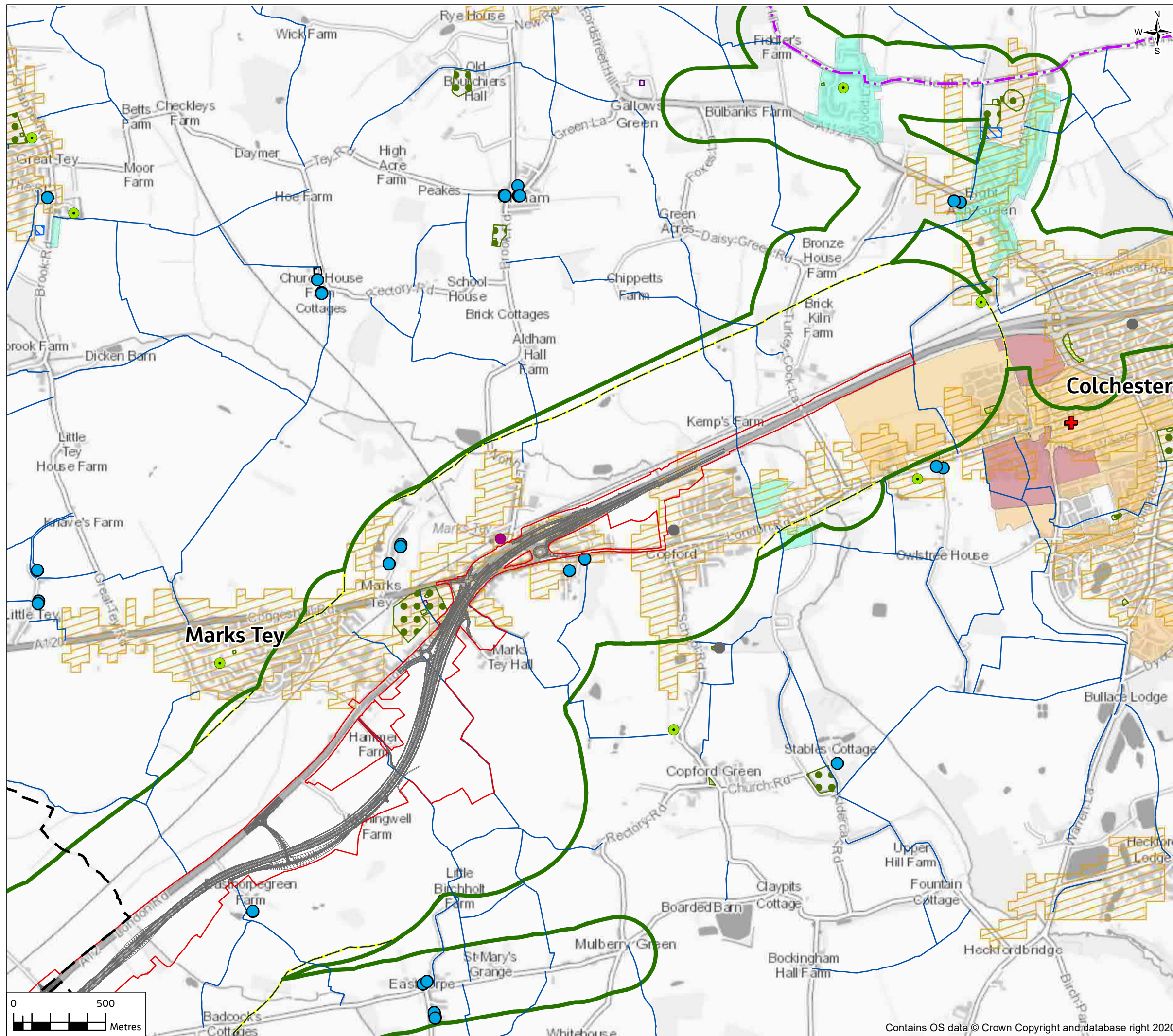


P03	13/05/21	For consultation	JC	MO	JW	SG
Rev.	Rev. Date	Purpose of revision	Drawn	Check'd	Rev'd	Appr'd
Contractor		Designer				
		 Cottons Centre, Cottons Lane, London, SE1 2QG, UK. Tel: +44 (0)20 3980 2000 www.jacobs.com				
Client						
Project						
A12 CHELMSFORD TO A120 WIDENING SCHEME						
Drawing Title						
PEIR POPULATION AND HEALTH CONTEXT SHEET 5 OF 6						
Drawing Status						
S4 - SUITABLE FOR STAGE APPROVAL						
Scale @ A3	1:20000					DO NOT SCALE
Jacobs No.	B36601D1					Rev P03
Client No.	HE551497					
Drawing Number						
HE551497-JAC-ENM-SCHW-SK-GI-0005						

Contains OS data © Crown Copyright and database right 2020



**FIGURE 13.1**

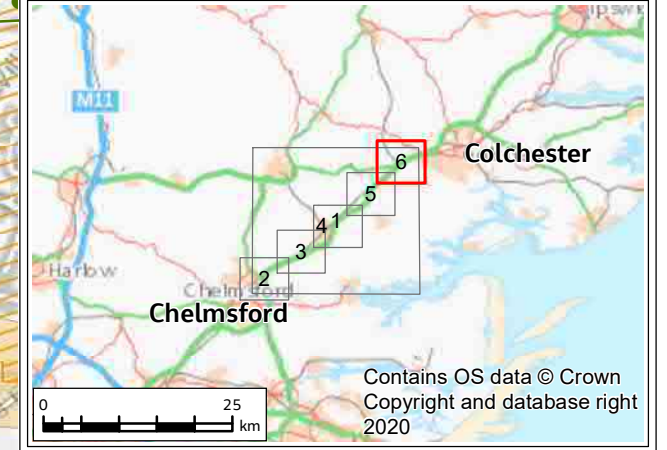


**Legend**

- Provisional Order Limits
- Proposed Scheme
- Human health study area (indicative)
- Land use and access study area (500m)
- District boundary
- Schools and Nurseries
- Church hall
- + GP surgeries/medical centres and hospitals
- Playground
- National cycle routes
- Public Right of Way
- Built up area (source: ONS Census 2011)
- Open Greenspace Sites
- Allotments or community growing spaces
- Cemetery
- Other sports facility
- Play space
- Public park or garden
- Strategic Economic Area

**Allocations: Colchester Local Plan 2017 – 2033 (Publication Draft, June 2017)**

- Mixed Use
- Residential
- Strategic Economic Area



P03	13/05/21	For consultation	JC	MO	JW	SG
Rev.	Rev. Date	Purpose of revision	Drawn	Check'd	Rev'd	Appr'd
Contractor			Designer			
			 Cottons Centre, Cottons Lane, London, SE1 2QG, UK. Tel: +44 (0)20 3980 2000 www.jacobs.com			
Client						
Project						
A12 CHELMSFORD TO A120 WIDENING SCHEME						
Drawing Title						
PEIR POPULATION AND HEALTH CONTEXT SHEET 6 OF 6						
Drawing Status						
S4 - SUITABLE FOR STAGE APPROVAL						
Scale @ A3		1:20000	DO NOT SCALE			
Jacobs No.		B36601D1			Rev P03	
Client No.		HE551497				
Drawing Number						
HE551497-JAC-ENM-SCHW-SK-GI-0006						



**FIGURE 13.2**

**Boreham and the Leighs**  
 + : none identified.  
 - : increased NO<sub>2</sub> (generally small magnitude) in some residential areas

**Wickham Bishops and Woodham**  
 + : none identified.  
 - : increased NO<sub>2</sub> (generally small magnitude) and significant noise increases towards the north of the ward

**Legend**

- Provisional Order Limits
- Proposed Scheme
- Human health study area (indicative)
- District boundary
- Ward boundary
- Notable change in AADT24 traffic

**Health Profile Data**

- % population with long term illness or disability – significantly worse than England average
- Deaths from respiratory diseases (SMR) – significantly worse than England average
- Hospital admissions for COPD (SAR) – significantly worse than England average

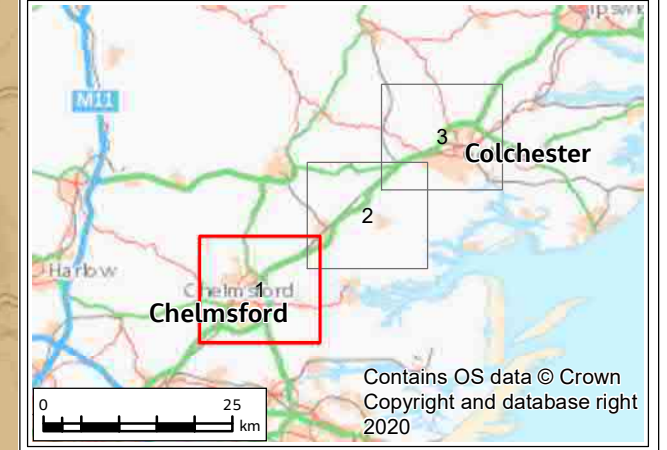
**Population aged 0-15 (%)**

- Highest quintile
- 2nd highest quintile

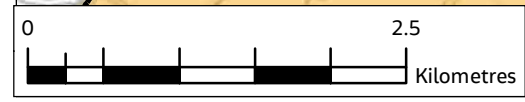
**Population aged over 65 (%)**

- Highest quintile
- 2nd highest quintile

Note:  
 1. For effects on air and noise pollution during operation see Figures 6.10 and 12.5.  
 2. For changes in active travel provision and access to greenspace and outdoor recreation during operation see Figure 13.3



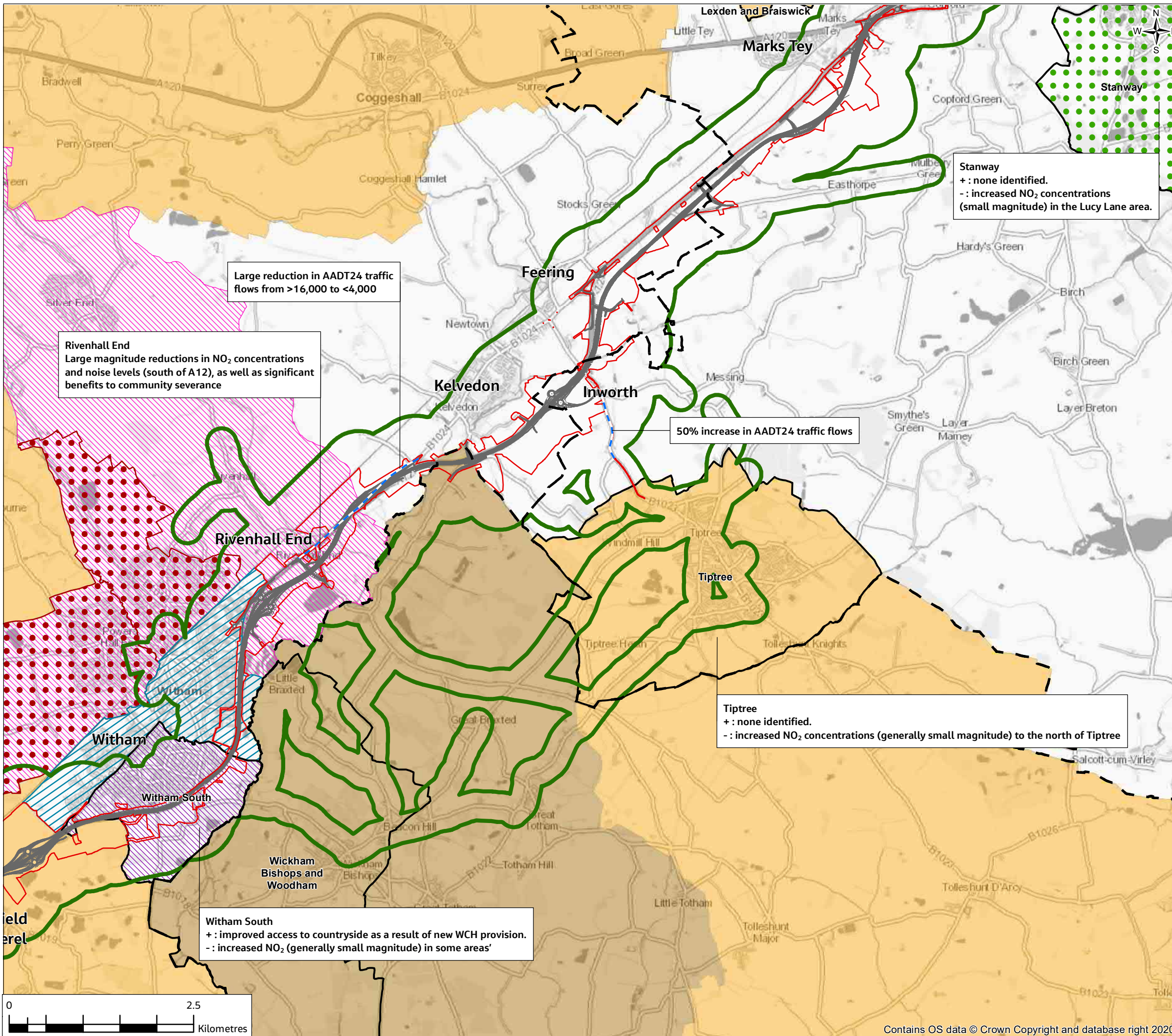
PO1	13/05/21	For consultation	JC	MO	JW	SG
Rev.	Rev. Date	Purpose of revision	Drawn	Check'd	Rev'd	Appr'd
Contractor			Designer			
Client						
Project						
A12 CHELMSFORD TO A120 WIDENING SCHEME						
Drawing Title						
PEIR HUMAN HEALTH BASELINE AND IMPACTS SHEET 1 OF 3						
Drawing Status						
S4 - SUITABLE FOR STAGE APPROVAL						
Scale @ A3	1:50000					DO NOT SCALE
Jacobs No.	B36601D1					Rev
Client No.	HE551497					PO1
Drawing Number						
HE551497-JAC-ENM-SCHW-SK-GI-0007						



© Copyright 2021 Jacobs U.K. Limited. The concepts and information contained in this document are the property of Jacobs. Use or copying of this document in whole or in part without the written permission of Jacobs constitutes an infringement of copyright. Limitation: This drawing has been prepared on behalf of, and for the exclusive use of Jacobs' Client, and is subject to, and issued in accordance with, the provisions of the contract between Jacobs and the Client. Jacobs accepts no liability or responsibility whatsoever for, or in respect of, any use of, or reliance upon, this drawing by any third party.

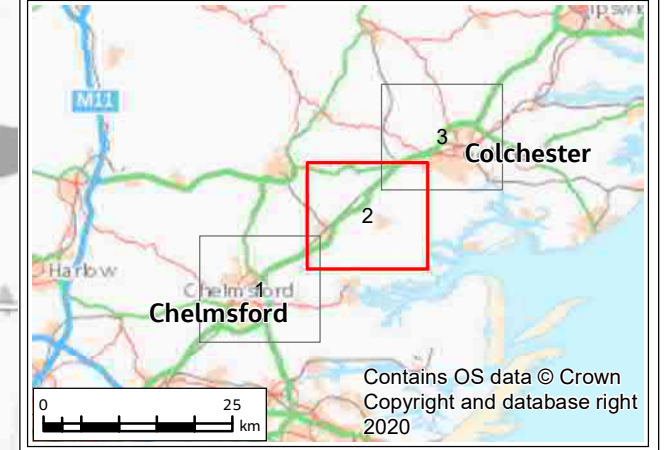


FIGURE 13.2



**Note:**

- For effects on air and noise pollution during operation see Figures 6.10 and 12.5.
- For changes in active travel provision and access to greenspace and outdoor recreation during operation see Figure 13.3



PO1	13/05/21	For consultation	JC	MO	JW	SG
Rev.	Rev. Date	Purpose of revision	Drawn	Check'd	Rev'd	Appr'd
Contractor			Designer			



Project  
A12 CHELMSFORD TO A120 WIDENING SCHEME

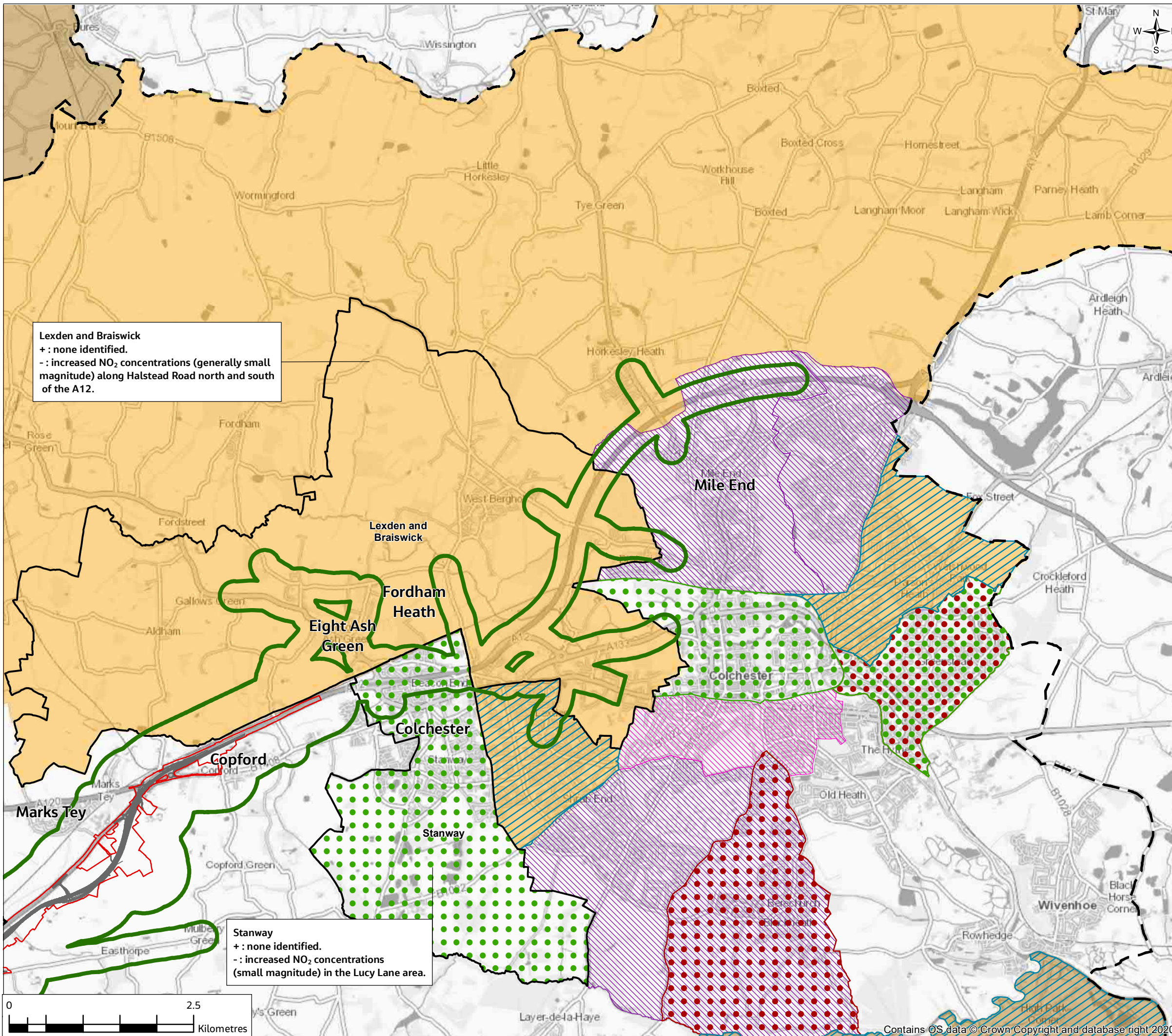
Drawing Title  
PEIR  
HUMAN HEALTH BASELINE AND IMPACTS  
SHEET 2 OF 3

Drawing Status	S4 - SUITABLE FOR STAGE APPROVAL		
Scale @ A3	1:50000	DO NOT SCALE	
Jacobs No.	B36601D1	Rev PO1	
Client No.	HE551497	Drawing Number	
HE551497-JAC-ENM-SCHW-SK-GI-0008			

© Copyright 2021 Jacobs U.K. Limited. The concepts and information contained in this document are the property of Jacobs. Use or copying of this document in whole or in part without the written permission of Jacobs constitutes an infringement of copyright. Limitation: This drawing has been prepared on behalf of, and for the exclusive use of Jacobs' Client, and is subject to, and issued in accordance with, the provisions of the contract between Jacobs and the Client. Jacobs accepts no liability or responsibility whatsoever for, or in respect of, any use of, or reliance upon, this drawing by any third party.



**FIGURE 13.2**

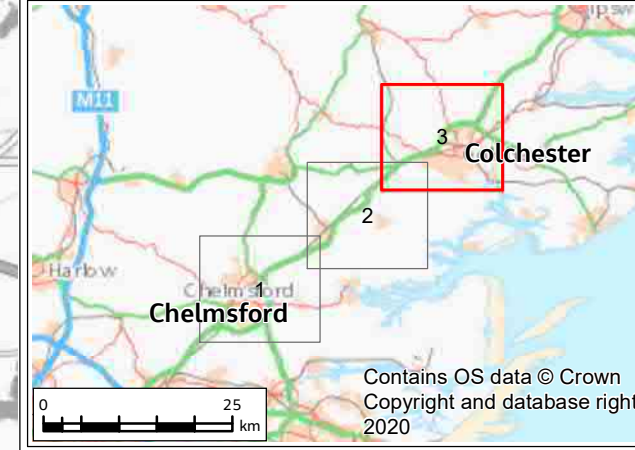


**Lexden and Braiswick**  
 + : none identified.  
 - : increased NO<sub>2</sub> concentrations (generally small magnitude) along Halstead Road north and south of the A12.

**Stanway**  
 + : none identified.  
 - : increased NO<sub>2</sub> concentrations (small magnitude) in the Lucy Lane area.

- Legend**
- Provisional Order Limits
  - Proposed Scheme
  - Human health study area (indicative)
  - District boundary
  - Ward boundary
  - Notable change in AADT24 traffic
- Health Profile Data**
- % population with long term illness or disability – significantly worse than England average
  - Deaths from respiratory diseases (SMR) – significantly worse than England average
  - Hospital admissions for COPD (SAR) – significantly worse than England average
- Population aged 0-15 (%)**
- Highest quintile
  - 2nd highest quintile
- Population aged over 65 (%)**
- Highest quintile
  - 2nd highest quintile

**Note:**  
 1. For effects on air and noise pollution during operation see Figures 6.10 and 12.5.  
 2. For changes in active travel provision and access to greenspace and outdoor recreation during operation see Figure 13.3

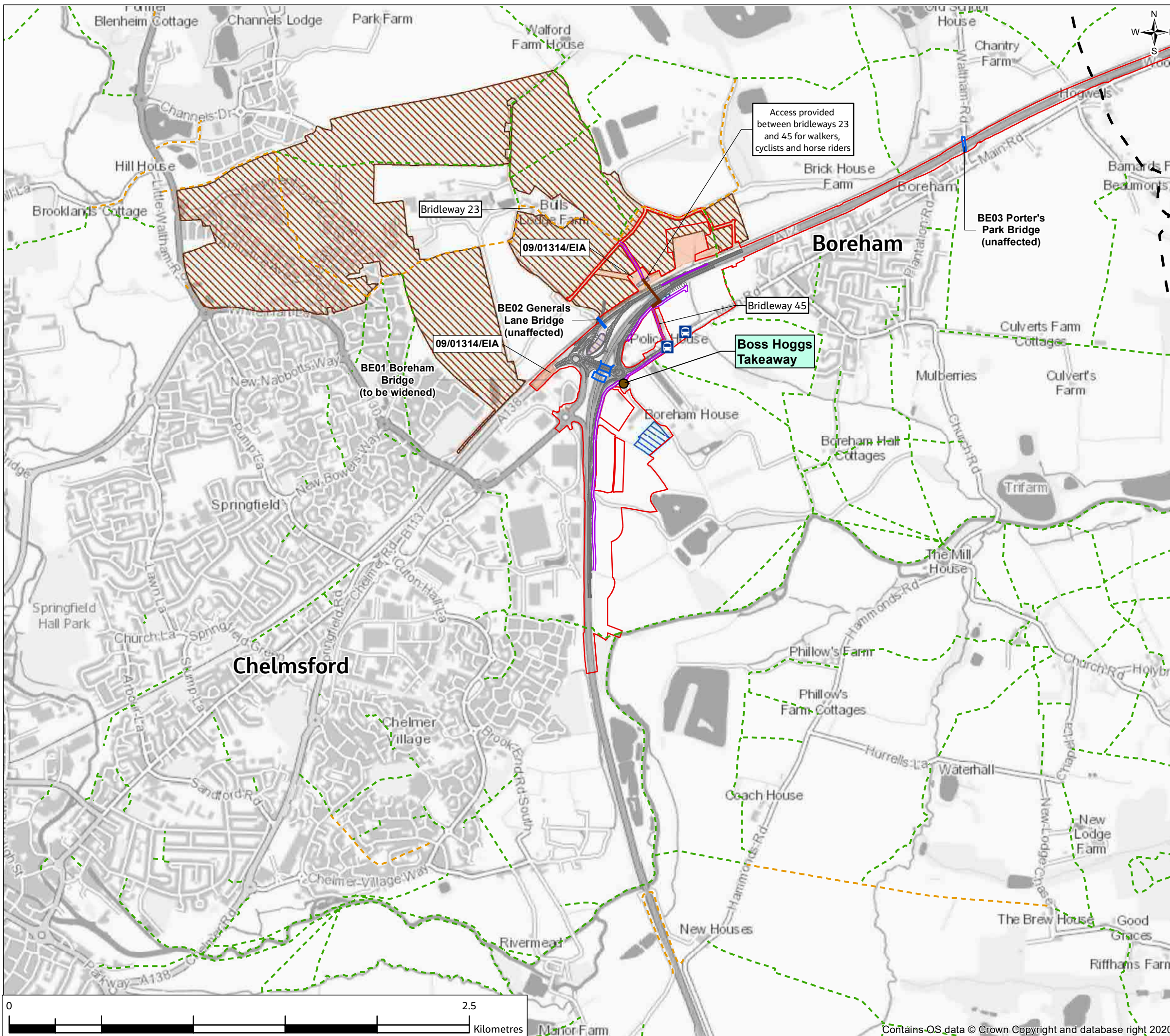


PO1	13/05/21	For consultation	JC	MO	JW	SG
Rev.	Rev. Date	Purpose of revision	Drawn	Check'd	Rev'd	Appr'd
Contractor			Designer			
			 Cottons Centre, Cottons Lane, London, SE1 2QG, UK. Tel: +44 (0)20 3980 2000 www.jacobs.com			
Client						
Project						
A12 CHELMSFORD TO A120 WIDENING SCHEME						
Drawing Title						
PEIR HUMAN HEALTH BASELINE AND IMPACTS SHEET 3 OF 3						
Drawing Status						
S4 - SUITABLE FOR STAGE APPROVAL						
Scale @ A3	1:50000					DO NOT SCALE
Jacobs No.	B36601D1					Rev
Client No.	HE551497					PO1
Drawing Number						
HE551497-JAC-ENM-SCHW-SK-GI-0009						

© Copyright 2021 Jacobs U.K. Limited. The concepts and information contained in this document are the property of Jacobs. Use or copying of this document in whole or in part without the written permission of Jacobs constitutes an infringement of copyright. Limitation: This drawing has been prepared on behalf of, and for the exclusive use of Jacobs' Client, and is subject to, and issued in accordance with, the provisions of the contract between Jacobs and the Client. Jacobs accepts no liability or responsibility whatsoever for, or in respect of, any use of, or reliance upon, this drawing by any third party.



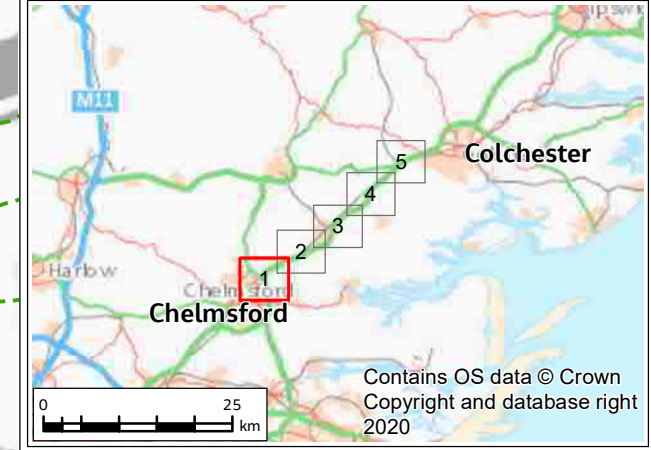
**FIGURE 13.3**



**Legend**

- Provisional Order Limits
- Proposed Scheme
- District boundary
- Walking and cycling provision
- Haul Routes
- Borrow Pits
- Compound Lay Down Areas
- Proposed scheme structures
  - Walkers
  - Walkers and cyclists
  - Walkers, cyclists and horse riders
  - Other structures
- Residential receptors
  - Residential dwellings - demolished
  - Residential properties - temporary or permanent land take from garden areas
- Community Receptors
  - Permanent land take
  - Permanent land take and change in access
  - Permanent change in access
- Temporary change in access
- Temporary land take
- Commercial Receptors
  - Permanent land take
  - Permanent change in access
  - Permanent land take and change in access
  - Temporary change in access
  - Temporary land take
- WCH routes and facilities
  - Bridleway
  - Footpath
  - Footpath within
  - Restricted Byway
  - National Cycle Route
  - NCN Route 16
  - New route of NCN Route 16
  - Bus stops
- Planning applications
  - Permanent land take
  - Temporary land take
  - Out of Red Line Boundary

**Note:**  
 1. Where PRoW adjoin new or realigned local roads or new trunk road junctions, provision for access between the two will be made.  
 2. Where PRoW fall within the footprint of permanent works, they will be closed unless otherwise detailed.  
 3. Agricultural land holdings not shown – assessment to be provided in Environmental Statement

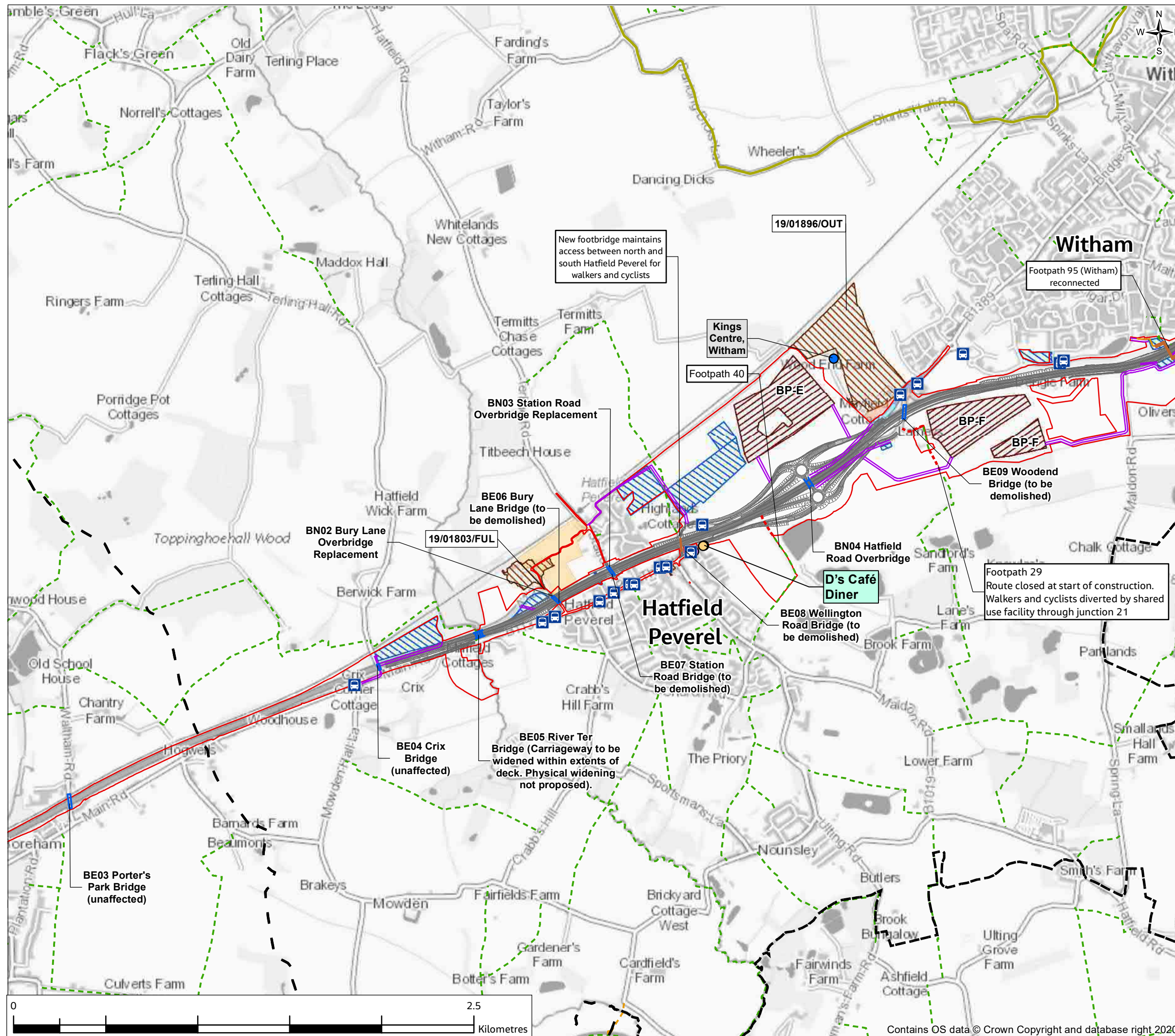


PO1	13/05/21	For consultation	JC	MO	JW	SG
Rev.	Rev. Date	Purpose of revision	Drawn	Check'd	Rev'd	Appr'd
Contractor			Designer			
			 Cottons Centre, Cottons Lane, London, SE1 2QG, UK. Tel: +44 (0)20 3980 2000 www.jacobs.com			
Client						
Project						
A12 CHELMSFORD TO A120 WIDENING SCHEME						
Drawing Title						
PEIR COMMUNITIES, LAND USE AND ACCESSIBILITY IMPACTS SHEET 1 OF 5						
Drawing Status						
S4 - SUITABLE FOR STAGE APPROVAL						
Scale @ A3		1:20000	DO NOT SCALE			
Jacobs No.		B36601D1	Rev			
Client No.		HE551497	PO1			
Drawing Number						
HE551497-JAC-ENM-SCHW-SK-GI-0010						

© Copyright 2021 Jacobs U.K. Limited. The concepts and information contained in this document are the property of Jacobs. Use or copying of this document in whole or in part without the written permission of Jacobs constitutes an infringement of copyright. Limitation: This drawing has been prepared on behalf of, and for the exclusive use of Jacobs' Client, and is subject to, and issued in accordance with, the provisions of the contract between Jacobs and the Client. Jacobs accepts no liability or responsibility whatsoever for, or in respect of, any use of, or reliance upon, this drawing by any third party.



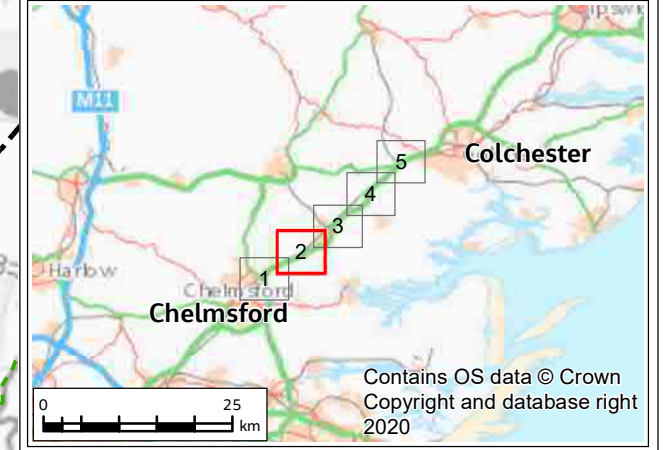
**FIGURE 13.3**



**Legend**

- Provisional Order Limits
- Proposed Scheme
- District boundary
- Walking and cycling provision
- Haul Routes
- Borrow Pits
- Compound Lay Down Areas
- Proposed scheme structures
  - Walkers
  - Walkers and cyclists
  - Walkers, cyclists and horse riders
  - Other structures
- Residential receptors
  - Residential dwellings - demolished
  - Residential properties - temporary or permanent land take from garden areas
- Community Receptors
  - Permanent land take
  - Permanent land take and change in access
  - Permanent change in access
- Temporary change in access
- Temporary land take
- Commercial Receptors
  - Permanent land take
  - Permanent change in access
  - Permanent land take and change in access
  - Temporary change in access
  - Temporary land take
- WCH routes and facilities
  - Bridleway
  - Byway
  - Footpath
  - Footpath within
  - Restricted Byway
  - National Cycle Route
  - NCN Route 16
  - New route of NCN Route 16
  - Bus stops
- Planning applications
  - Permanent land take
  - Temporary land take
  - Out of Red Line Boundary

**Note:**  
 1. Where PRoW adjoin new or realigned local roads or new trunk road junctions, provision for access between the two will be made.  
 2. Where PRoW fall within the footprint of permanent works, they will be closed unless otherwise detailed.  
 3. Agricultural land holdings not shown - assessment to be provided in Environmental Statement

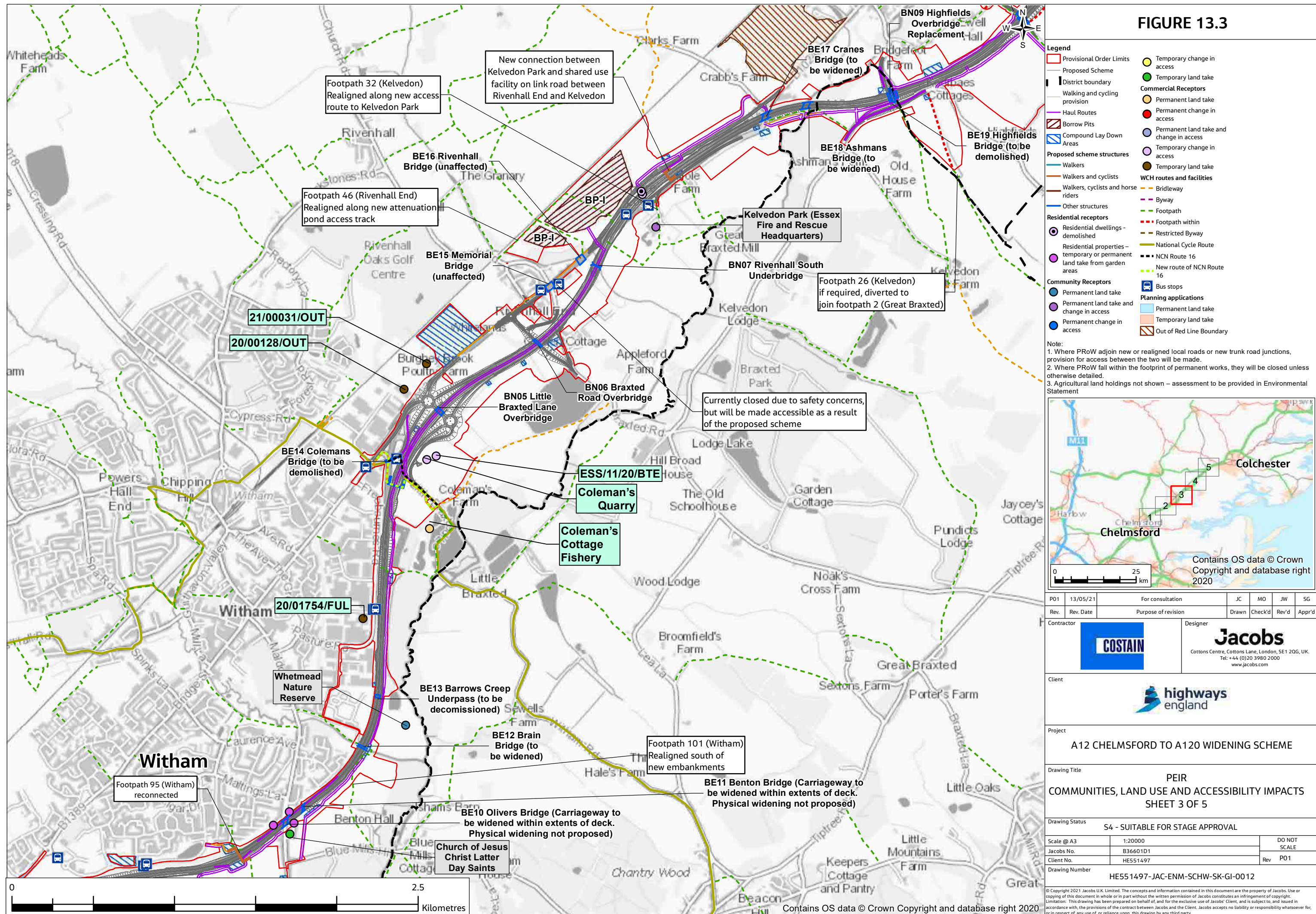


PO1	13/05/21	For consultation	JC	MO	JW	SG
Rev.	Rev. Date	Purpose of revision	Drawn	Check'd	Rev'd	Appr'd
Contractor			Designer			
			 Cottons Centre, Cottons Lane, London, SE1 2QG, UK. Tel: +44 (0)20 3980 2000 www.jacobs.com			
Client						
Project						
A12 CHELMSFORD TO A120 WIDENING SCHEME						
Drawing Title						
PEIR COMMUNITIES, LAND USE AND ACCESSIBILITY IMPACTS SHEET 2 OF 5						
Drawing Status						
S4 - SUITABLE FOR STAGE APPROVAL						
Scale @ A3	1:20000					DO NOT SCALE
Jacobs No.	B36601D1					Rev
Client No.	HE551497					PO1
Drawing Number						
HE551497-JAC-ENM-SCHW-SK-GI-0011						

© Copyright 2021 Jacobs U.K. Limited. The concepts and information contained in this document are the property of Jacobs. Use or copying of this document in whole or in part without the written permission of Jacobs constitutes an infringement of copyright. Limitation: This drawing has been prepared on behalf of, and for the exclusive use of Jacobs' Client, and is subject to, and issued in accordance with, the provisions of the contract between Jacobs and the Client. Jacobs accepts no liability or responsibility whatsoever for, or in respect of, any use of, or reliance upon, this drawing by any third party.



**FIGURE 13.3**

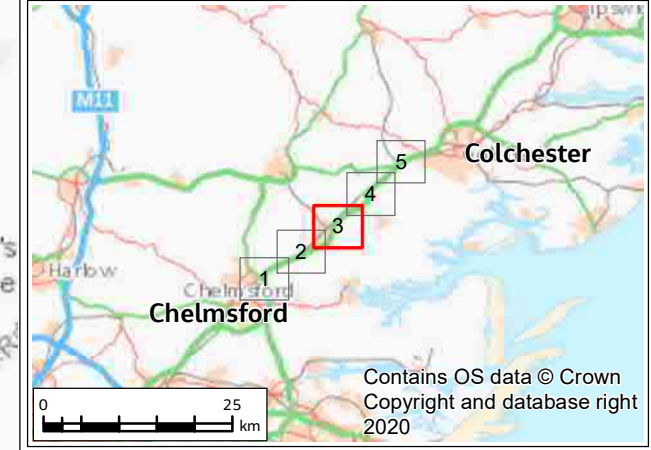


**Legend**

- Provisional Order Limits
- Proposed Scheme
- District boundary
- Walking and cycling provision
- Haul Routes
- Borrow Pits
- Compound Lay Down Areas
- Proposed scheme structures
  - Walkers
  - Walkers and cyclists
  - Walkers, cyclists and horse riders
  - Other structures
- Residential receptors
  - Residential dwellings - demolished
  - Residential properties - temporary or permanent land take from garden areas
- Community Receptors
  - Permanent land take
  - Permanent land take and change in access
  - Permanent change in access
- Temporary change in access
- Temporary land take
- Commercial Receptors
  - Permanent land take
  - Permanent change in access
  - Permanent land take and change in access
  - Temporary change in access
  - Temporary land take
- WCH routes and facilities
  - Bridleway
  - Byway
  - Footpath
  - Footpath within
  - National Cycle Route
  - NCN Route 16
  - New route of NCN Route 16
- Planning applications
  - Permanent land take
  - Temporary land take
  - Out of Red Line Boundary

**Note:**

- Where PRoW adjoin new or realigned local roads or new trunk road junctions, provision for access between the two will be made.
- Where PRoW fall within the footprint of permanent works, they will be closed unless otherwise detailed.
- Agricultural land holdings not shown - assessment to be provided in Environmental Statement

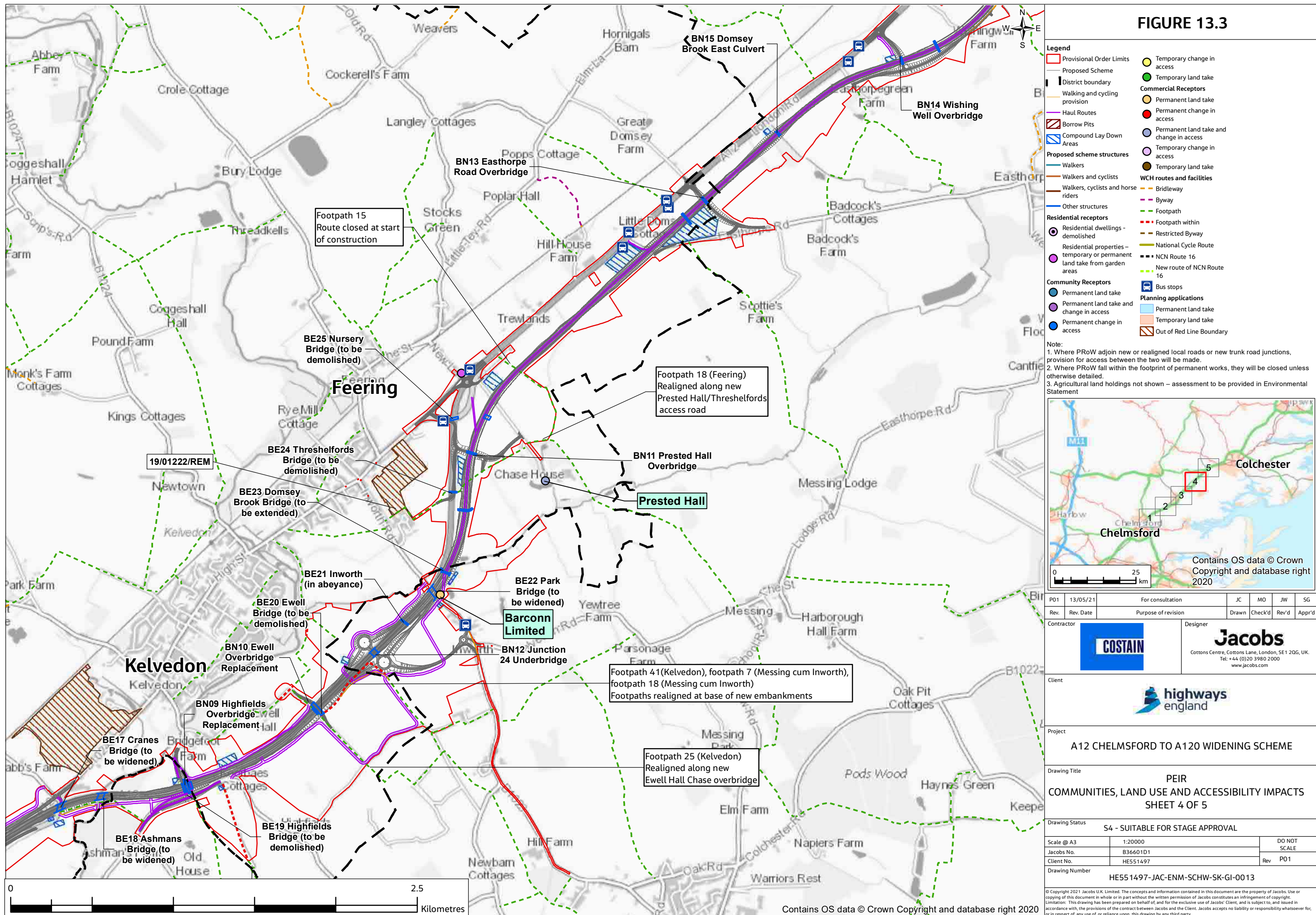


PO1	13/05/21	For consultation	JC	MO	JW	SG
Rev.	Rev. Date	Purpose of revision	Drawn	Check'd	Rev'd	Appr'd
Contractor			Designer			
			 Cottons Centre, Cottons Lane, London, SE1 2QG, UK. Tel: +44 (0)20 3980 2000 www.jacobs.com			
Client						
Project						
A12 CHELMSFORD TO A120 WIDENING SCHEME						
Drawing Title						
PEIR COMMUNITIES, LAND USE AND ACCESSIBILITY IMPACTS SHEET 3 OF 5						
Drawing Status						
S4 - SUITABLE FOR STAGE APPROVAL						
Scale @ A3	1:20000					DO NOT SCALE
Jacobs No.	B36601D1					Rev
Client No.	HE551497					PO1
Drawing Number						
HE551497-JAC-ENM-SCHW-SK-GI-0012						

© Copyright 2021 Jacobs U.K. Limited. The concepts and information contained in this document are the property of Jacobs. Use or copying of this document in whole or in part without the written permission of Jacobs constitutes an infringement of copyright. Limitation: This drawing has been prepared on behalf of, and for the exclusive use of Jacobs' Client, and is subject to, and issued in accordance with, the provisions of the contract between Jacobs and the Client. Jacobs accepts no liability or responsibility whatsoever for, or in respect of, any use of, or reliance upon, this drawing by any third party.



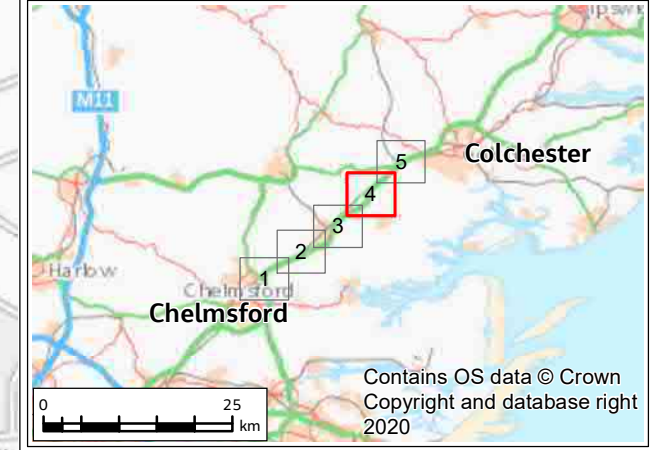
**FIGURE 13.3**



- Legend**
- Provisional Order Limits
  - Proposed Scheme
  - District boundary
  - Walking and cycling provision
  - Haul Routes
  - Borrow Pits
  - Compound Lay Down Areas
  - Proposed scheme structures
    - Walkers
    - Walkers and cyclists
    - Walkers, cyclists and horse riders
    - Other structures
  - Residential receptors
    - Residential dwellings - demolished
    - Residential properties - temporary or permanent land take from garden areas
  - Community Receptors
    - Permanent land take
    - Permanent land take and change in access
    - Permanent change in access
  - Temporary change in access
  - Temporary land take
  - Commercial Receptors
    - Permanent land take
    - Permanent change in access
    - Temporary change in access
    - Temporary land take
  - WCH routes and facilities
    - Bridleway
    - Footpath
    - Footpath within
    - Restricted Byway
    - National Cycle Route
    - NCN Route 16
    - New route of NCN Route 16
    - Bus stops
  - Planning applications
    - Permanent land take
    - Temporary land take
    - Out of Red Line Boundary

**Note:**

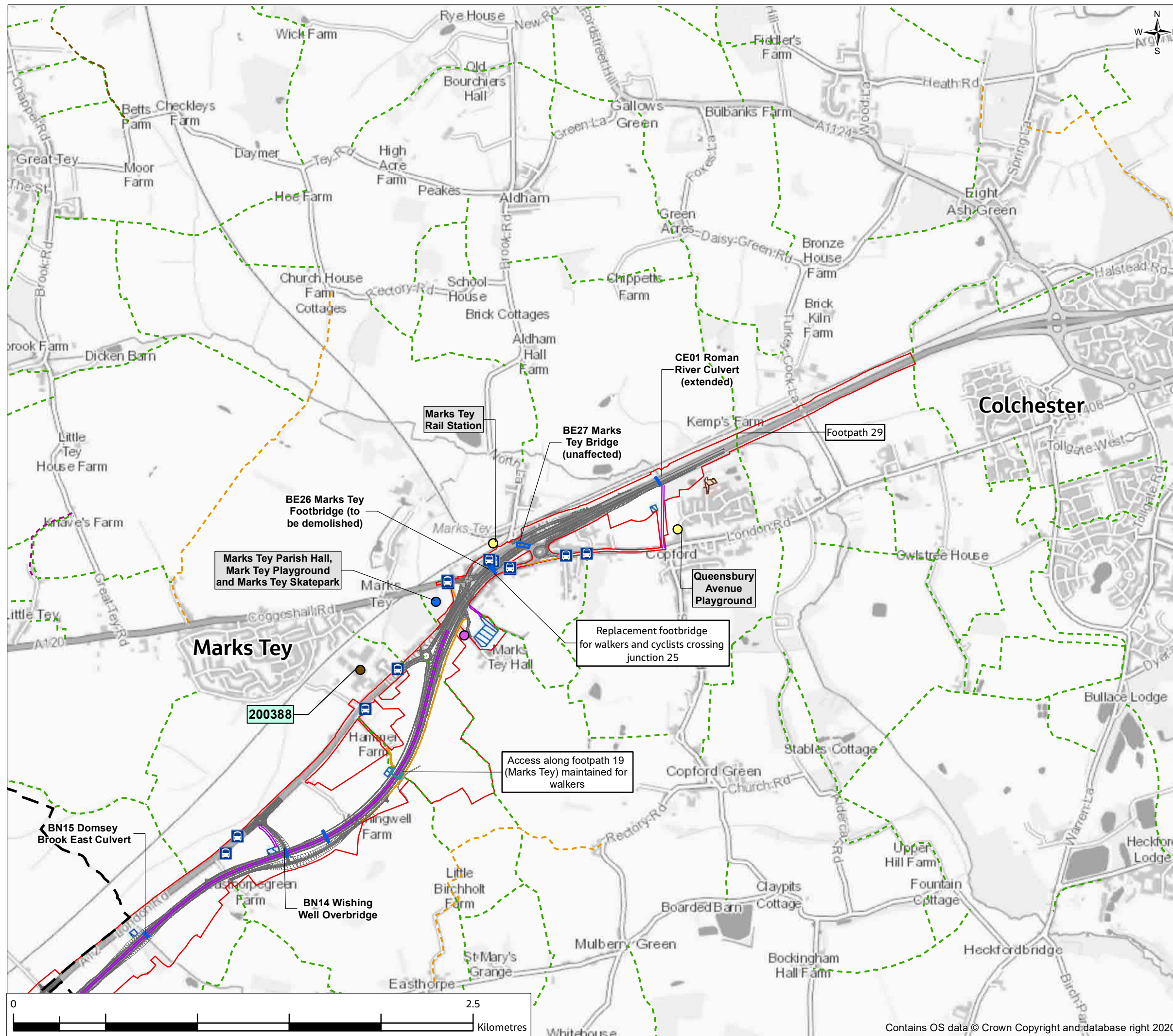
- Where PRoW adjoin new or realigned local roads or new trunk road junctions, provision for access between the two will be made.
- Where PRoW fall within the footprint of permanent works, they will be closed unless otherwise detailed.
- Agricultural land holdings not shown - assessment to be provided in Environmental Statement



PO1	13/05/21	For consultation	JC	MO	JW	SG
Rev.	Rev. Date	Purpose of revision	Drawn	Check'd	Rev'd	Appr'd
Contractor		Designer				
Client						
Project						
A12 CHELMSFORD TO A120 WIDENING SCHEME						
Drawing Title						
PEIR COMMUNITIES, LAND USE AND ACCESSIBILITY IMPACTS SHEET 4 OF 5						
Drawing Status						
S4 - SUITABLE FOR STAGE APPROVAL						
Scale @ A3	1:20000					DO NOT SCALE
Jacobs No.	B36601D1					Rev
Client No.	HE551497					PO1
Drawing Number						
HE551497-JAC-ENM-SCHW-SK-GI-0013						



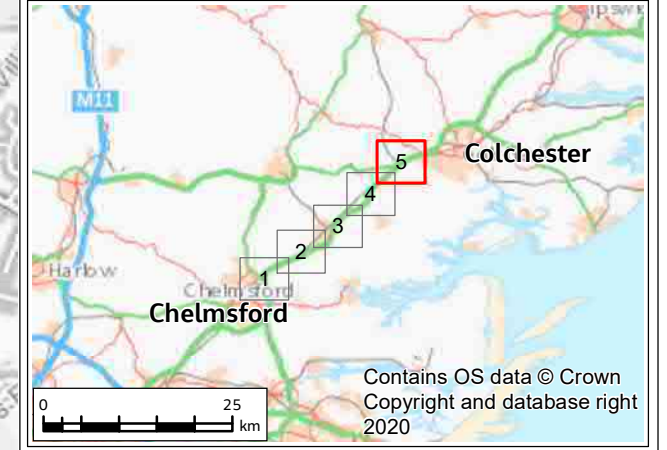
**FIGURE 13.3**



**Legend**

- Provisional Order Limits
- Proposed Scheme
- District boundary
- Walking and cycling provision
- Haul Routes
- Borrow Pits
- Compound Lay Down Areas
- Proposed scheme structures
  - Walkers
  - Walkers and cyclists
  - Walkers, cyclists and horse riders
  - Other structures
- Residential receptors
  - Residential dwellings - demolished
  - Residential properties - temporary or permanent land take from garden areas
- Community Receptors
  - Permanent land take
  - Permanent land take and change in access
  - Permanent change in access
- Temporary change in access
- Temporary land take
- Commercial Receptors
  - Permanent land take
  - Permanent change in access
  - Permanent land take and change in access
  - Temporary change in access
  - Temporary land take
- WCH routes and facilities
  - Bridleway
  - Byway
  - Footpath
  - Footpath within
  - Restricted Byway
  - National Cycle Route
  - NCN Route 16
  - New route of NCN Route 16
  - Bus stops
- Planning applications
  - Permanent land take
  - Temporary land take
  - Out of Red Line Boundary

**Note:**  
 1. Where PRoW adjoin new or realigned local roads or new trunk road junctions, provision for access between the two will be made.  
 2. Where PRoW fall within the footprint of permanent works, they will be closed unless otherwise detailed.  
 3. Agricultural land holdings not shown - assessment to be provided in Environmental Statement



P01	13/05/21	For consultation	JC	MO	JW	SG
Rev.	Rev. Date	Purpose of revision	Drawn	Check'd	Rev'd	Appr'd
Contractor			Designer			
			 Cottons Centre, Cottons Lane, London, SE1 2QG, UK. Tel: +44 (0)20 3980 2000 www.jacobs.com			
Client						
Project						
A12 CHELMSFORD TO A120 WIDENING SCHEME						
Drawing Title						
PEIR COMMUNITIES, LAND USE AND ACCESSIBILITY IMPACTS SHEET 5 OF 5						
Drawing Status						
S4 - SUITABLE FOR STAGE APPROVAL						
Scale @ A3		1:20000	DO NOT SCALE			
Jacobs No.		B36601D1	Rev		P01	
Client No.		HE551497				
Drawing Number						
HE551497-JAC-ENM-SCHW-SK-GI-0014						

