

# **A12 Chelmsford to A120 widening scheme**

**TR010060**

## **DEVELOPMENT CONSENT ORDER CHANGE APPLICATION CONSULTATION**

### **Anglian Water Pumping Station (Bury Lane, Hatfield Peverel) Technical Note**

Rule 113 and 114  
Infrastructure Planning (Examination Procedure)  
Regulations 2010

April 2023

**CONTENTS**

**1 Introduction .....1**

1.1 Background.....1

1.2 Changes being made.....1

1.3 Reason behind changes .....2

**2 Impacts .....3**

2.1 Land take .....3

2.2 Infrastructure design .....3

2.3 Traffic.....3

2.4 Environment.....3

Chapter 6: Air quality.....3

Chapter 7: Cultural heritage .....4

Chapter 8: Landscape and visual.....4

Chapter 9: Biodiversity .....5

Chapter 10: Geology and soils .....6

Chapter 11: Material assets and waste .....6

Chapter 12: Noise and vibration.....7

Chapter 13: Population and human health .....7

Chapter 14: Road drainage and the water environment.....8

Chapter 15: Climate .....9

Chapter 16: Cumulative effects assessment .....9

Overall environment conclusion .....10

**3 Conclusion.....11**

**LIST OF PLATES**

Plate 1.1 Change to Landtake .....2

**LIST OF TABLES**

Table 2.1 Cumulative effects .....9

# 1 Introduction

## 1.1 Background

- 1.1.1 An application seeking a development consent order (DCO) for the A12 Chelmsford to A120 widening scheme (the proposed scheme) was submitted by National Highways to the Secretary of State for Transport via the Planning Inspectorate on 15 August 2022 and accepted for Examination on 12 September 2022.
- 1.1.2 The Examination started on 12 January 2023 and is expected to finish on 12 July 2023.
- 1.1.3 Since the DCO application was made, National Highways has continued to engage and refine designs to identify opportunities to further improve the proposals. As a result of this, National Highways are consulting on changes to the proposed scheme during the Examination stage to address interested parties' suggestions and implement improvements to the proposed scheme.
- 1.1.4 This targeted DCO change application consultation reflects design changes to the DCO application that we are proposing. These changes are as a result of the continued design evolution, detailed design progressing in parallel with the application, and continued engagement with stakeholders, interested parties and our delivery partners.
- 1.1.5 Map books have been created to support the consultation which show the key DCO drawings which would be affected by the proposed change.
- 1.1.6 The DCO application can be found on the Planning Inspectorate's website at the following link  
<https://infrastructure.planninginspectorate.gov.uk/projects/eastern/a12-chelmsford-to-a120-widening-scheme/>
- 1.1.7 References to the DCO application or subsequent documents submitted during the Examination will be made in this report, the document reference number will be written in square brackets and all documents with a reference number can be found in the Examination Library on the Planning Inspectorate's website.

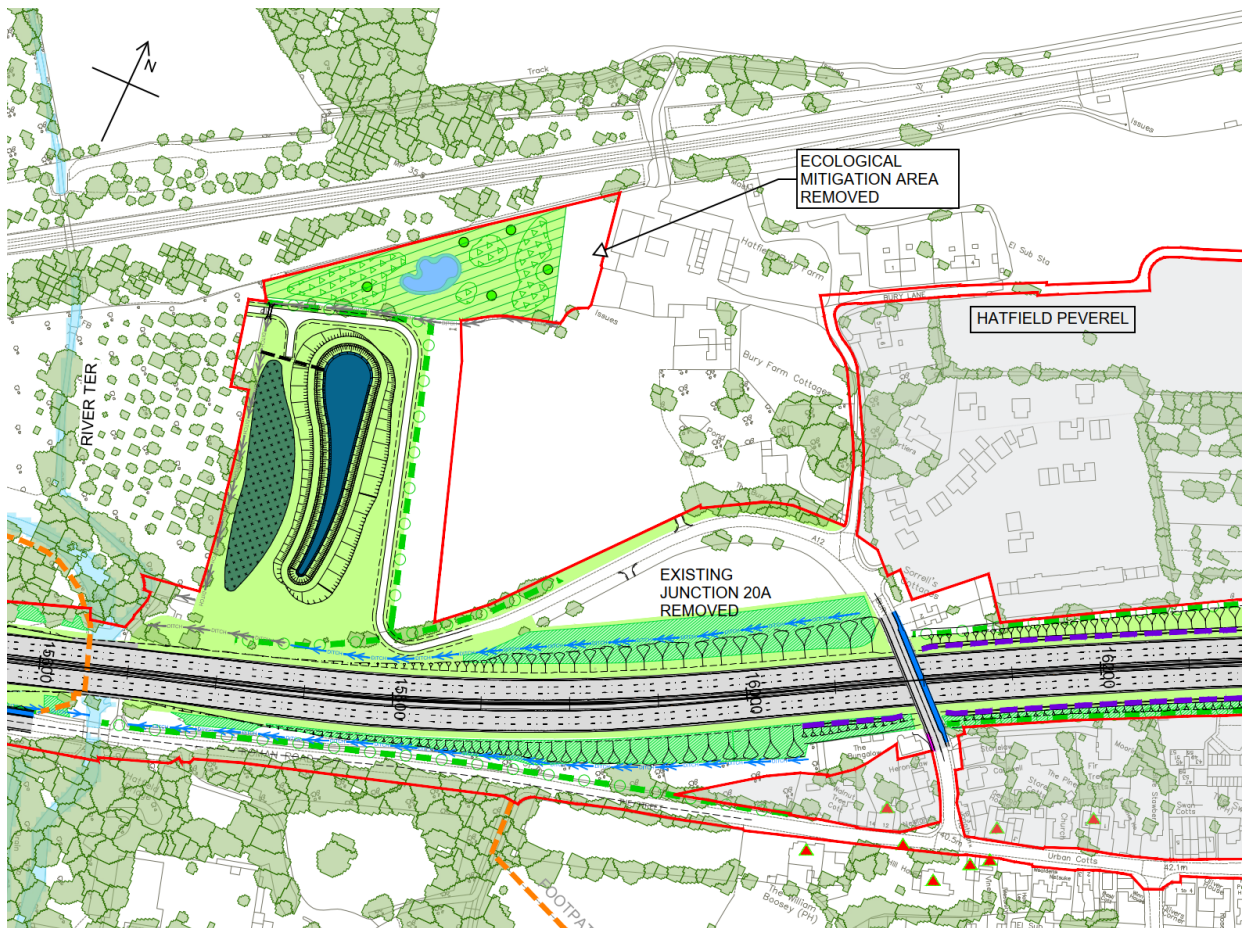
## 1.2 Changes being made

- 1.2.1 The purpose of this document is to explain the proposed change to the extent of an Environmental Mitigation Area as shown on the General Arrangement Drawings (Map Book 2) to accommodate a pumping station at the Bellway Homes Site, Hatfield Bury Farm, Bury Lane, Hatfield Peverel (planning permission 19/01803/FUL). This falls within the Order Limits of the proposed scheme and specifically land plot 5/12c as shown on Sheet 5 of the Land Plans [APP-018]. The Applicant proposes to change the land use at this location from compulsory acquisition for ecological mitigation, to, land not subject to powers of compulsory acquisition or temporary possession. The small area of ecological mitigation that will be lost is a negligible decrease in the overall land

being provided for ecological mitigation across the whole proposed scheme, as explained further in Section 2 of this document.

### 1.3 Reason behind changes

1.3.1 A small area that was identified for acquisition for ecological mitigation purposes in the DCO application, comprises land that has been allocated for a small pumping station to be operated by Anglian Water Limited. After submission of the DCO application, the existing landowner has requested that the land be excluded from order powers to allow the pumping station to come forward as approved. The proposed change has been made following discussions with Bellway Homes and Braintree District Council and will ensure that a planning permission on the neighbouring land (Ref: 19/01803/FUL) would not be affected by the proposed scheme in this regard.



**Plate 1.1 Change to Landtake**

## 2 Impacts

### 2.1 Land take

2.1.1 The land take will reduce in this area, as the land associated with the pumping station will be excluded from compulsory purchase powers as set out in the draft Development Consent Order (dDCO). Details of the changes proposed to the land take can be found in Map Book 2 and the Schedule of Changes to the draft DCO, Book of Reference and Statement of Reasons which form part of the consultation materials.

### 2.2 Infrastructure design

2.2.1 There is no impact to the design of the proposed scheme.

### 2.3 Traffic

2.3.1 There are no impacts to the traffic flows.

### 2.4 Environment

2.4.1 The below sections describe the environmental impacts of the revised ecology mitigation area, with reference to the conclusions in the assessment chapters of the Environmental Statement submitted as part of the DCO application (chapters 6 to 16 of the Environmental Statement, DCO examination library reference [APP-073 to APP-083]).

2.4.2 Each section addresses the change in potential impacts, change in proposed mitigation measures, and changes to the assessment of likely significant effects as a result of the new design.

#### **Chapter 6: Air quality**

##### **Potential impacts**

2.4.3 The air quality assessment undertaken for the Environmental Statement is based on modelling impacts to a set of predefined human health, ecological and pollution climate mapping (PCM) receptors (see Environmental Statement Appendix 6.5: Air quality modelling results [APP-104]). The reduction of land take for the ecology mitigation area has no material effect on the location of receptors, nor does it affect traffic forecasts in the opening year 2027. As the operational traffic remains unchanged from what was assessed in the Environmental Statement, and the receptors are unaffected, then the potential impacts would remain as reported in Environmental Statement Chapter 6: Air quality, Section 6.9 [APP-073].

2.4.4 The potential impact of emissions from construction traffic in the peak construction year 2025 would not change from what was assessed in the Environmental Statement as a result of the new design.

2.4.5 Potential impacts from dust during construction would not change.

**Design, mitigation and enhancement measures**

- 2.4.6 No additional mitigation measures, beyond standard mitigation for dust management, have been proposed on the basis that there would be no likely significant air quality effects, in accordance with the Design Manual for Roads and Bridges (DMRB) LA 105 (see Chapter 6: Air quality, paragraph 6.10.6 [APP-073]). The land take reduction for the ecology mitigation area has no material effect on this outcome, and therefore no change to mitigation is required.

**Assessment of likely significant effects**

- 2.4.7 As the potential impacts would not change due to the reduction in land take for the ecology mitigation area, there would be no change to the significant effects for human health, ecological, or PCM receptors (see Environmental Statement Chapter 6: Air quality, Section 6.11 [APP-073]).

**Chapter 7: Cultural heritage****Potential impacts**

- 2.4.8 The new design does not result in any changes to the potential impacts on cultural heritage as reported in Section 7.9 of Environmental Statement Chapter 7: Cultural heritage [APP-074].

**Design, mitigation and enhancement measures**

- 2.4.9 There are no changes to design, mitigation and enhancement measures as reported in Section 7.10 of Chapter 7: Cultural heritage [APP-074].

**Assessment of likely significant effects**

- 2.4.10 The changes from the new design would not be at a level that would generate any new or different likely significant effects to those already reported for the proposed scheme, and there is therefore no change to the reported residual significance of effects reported in Section 7.11 of Chapter 7: Cultural heritage [APP-074].

**Chapter 8: Landscape and visual****Potential impacts**

- 2.4.11 The landscape effects that would be caused by the proposed scheme at junction 20a are considered within the assessment of effects on local landscape character area B21 Boreham Farmland Plateau, presented within Environmental Statement Appendix 8.2: Landscape effects schedule [APP-120]. There would be no further landscape effects than assessed as the changes comprise minor and localised adjustments to proposed planting within an advanced ecology mitigation area, and the assessment of impacts on B21 Boreham Farmland Plateau within the Environmental Statement considers the full extent of the proposed scheme where it falls within B21 Boreham Farmland Plateau, including proposals along the A12 mainline and proposals at junctions 19 and 21. As such, the overall conclusions on landscape impacts reported within Environmental Statement Chapter 8: Landscape and visual [APP-075] and Appendix 8.2: Landscape effects schedule [APP-120] would not change as a result of the new design.

- 2.4.12 Visual effects have been assessed through the application of representative viewpoints located at publicly accessible viewpoints, a proportionate approach which is supported by the Guidelines for Landscape and Visual Impact Assessment, Third Edition (GLVIA3) and DMRB LA 107 Landscape and Visual Effects, Revision 2. There are no representative viewpoints that would be affected by the revised ecology mitigation area. Therefore, the visual impacts assessed within Environmental Statement Chapter 8: Landscape and visual [APP-075] and Appendix 8.3 Visual effects schedule [APP-121] would not change as a result of the new design.

**Design, mitigation and enhancement measures**

- 2.4.13 The new design affects the landscape mitigation presented on sheet 5 of the Environmental Masterplan Part 1 [APP-086]. Proposed mitigation planting has been revised to reflect the new layout. The revisions comprise minor adjustments to the proposed mitigation, and do not materially affect the mitigation that would be delivered. The updated sheet of the Environmental Masterplan showing the revised planting forms part of the Consultation Materials (Map Book 2).

**Assessment of likely significant effects**

- 2.4.14 Consistent with the explanation presented above that the new design would not affect the landscape and visual impacts reported within the Environmental Statement, the landscape and visual effects reported within Chapter 8: Landscape and visual [APP-075], Appendix 8.2: Landscape effects schedule [APP-120] and Appendix 8.3: Visual effects schedule [APP-121] would not change as a result of the new design.

## **Chapter 9: Biodiversity**

### **Potential impacts**

- 2.4.15 The reduction in land take within the ecology mitigation area would result in a minor reduction in the land available for reptile mitigation. It would result in a reduction of the mitigation area from 0.8ha to 0.64ha, a change of 0.16ha. This equates to an 20% decrease in the area of this mitigation area, but a 0.4% decrease in the overall land being provided for reptile mitigation across the whole proposed scheme. This overall reduction is considered negligible and it is assessed that this would not reduce the effectiveness of reptile mitigation for the proposed scheme, and so there would be no change to the significance of effect for reptiles.

### **Design, mitigation and enhancement measures**

- 2.4.16 The potential impacts would not change owing to the reduction in land take within the ecology mitigation area, therefore no additional mitigation is required. The Environmental Masterplan has been updated to show the new layout of the ecology mitigation area. The updated Environmental Masterplan showing the revised planting forms part of the Consultation Materials (Map Book 2).

### **Assessment of likely significant effects**

- 2.4.17 As the potential impacts would not change owing to the reduction in land take within the ecology mitigation area, there would be no change to the significant

effects reported within Environmental Statement Chapter 9: Biodiversity [APP-076].

### **Chapter 10: Geology and soils**

- 2.4.18 The change to the ecology mitigation area slightly reduces the agricultural land take required by the proposed scheme. Although, the agricultural land would still be lost to the Anglian Water pumping station.
- 2.4.19 There are no land quality constraints or geological receptors in this location, so the new design does not result in any changes to the potential impacts reported in Section 10.9 of Environmental Statement Chapter 10: Geology and soils [APP-077].

#### **Design, mitigation and enhancement measures**

- 2.4.20 The new design does not necessitate any changes to be made to the design, mitigation and enhancement measures reported in Section 10.10 of Chapter 10: Geology and soils [APP-077]. No specific mitigation measures were identified for this aspect for the ecology mitigation area, beyond standard measures for manging soil during construction, and therefore no change to this is required with the new design.

#### **Assessment of likely significant effects**

- 2.4.21 While the new design is likely to result in a small reduction in overall agricultural land loss/disturbance, this reduction is considered insignificant compared to the overall agricultural land loss/disturbance for the proposed scheme as a whole, and therefore, there is no change to the significance of effects reported in Section 10.11 of Chapter 10: Geology and soils [APP-077].

### **Chapter 11: Material assets and waste**

- 2.4.22 The new design does not result in any changes to the potential impacts reported in Section 11.9 of Environmental Statement Chapter 11: Material assets and waste [APP-078]. This aspect does not assess the impacts associated with specific design elements at a local level, and instead focuses on assessing the impacts of materials consumption, minerals sterilisation and waste disposal in absolute terms.

#### **Design, mitigation and enhancement measures**

- 2.4.23 The new design does not necessitate any changes to be made to the design, mitigation and enhancement measures reported in Section 11.10 of Chapter 11: Material assets and waste [APP-078]. No additional mitigation measures were identified for this aspect in relation to the ecology mitigation area, and therefore no change to this is required with the new design.

#### **Assessment of likely significant effects**

- 2.4.24 While the new design is likely to result in negligible, yet indeterminate, changes to the total materials consumption, minerals sterilisation and waste disposal reported in Section 11.11 of Chapter 11: Material assets and waste [APP-078], any changes are considered insignificant in the context of the entire proposed scheme.



- 2.4.25 The changes from the new design would not be at a level that would generate any new or different likely significant effects to those already reported for the proposed scheme in the Environment Statement, and there is therefore no change to the reported residual significance of effects for the material assets or waste matters of this aspect.

## **Chapter 12: Noise and vibration**

### **Potential impacts**

- 2.4.26 The closest construction receptor to the proposed works is R4, which is representative of receptors at Meadow Bank, Hatfield Peverel (this is shown on sheet 2 of Environmental Statement Figure 12.3 [APP-230]). During certain construction activities (see paragraph 12.9.16 of Environmental Statement Chapter 12: Noise and vibration [APP-079]), the noise level was predicted to be above the significant observed adverse effect level (SOAEL), indicating the potential for likely significant adverse effects if the temporal threshold is exceeded, as defined in paragraph 12.5.27 of Chapter 12: Noise and vibration [APP-079]. However, none of the identified activities likely to exceed the SOAEL were from works associated with the ecology mitigation area. The reduced size of the ecology mitigation area would therefore result in no change in the impacts from these works.
- 2.4.27 The operation of the ecology mitigation area would not generate any noticeable levels of noise and so impacts were not calculated within Chapter 12: Noise and vibration [APP-079]. This would be the same for the new design.

### **Design, mitigation and enhancement measures**

- 2.4.28 No specific construction mitigation measures beyond standard mitigation measures were identified for the ecology mitigation area works, and no change to this is required with the new design.
- 2.4.29 During operation there were no mitigation measures identified as there was no potential impact. There is no change to the potential impact with the new design, and therefore no change to operational mitigation is required.

### **Assessment of likely significant effects**

- 2.4.30 No significant adverse effects were identified from the ecology mitigation area construction works. There is no change to this with the reduced size ecology mitigation area. The conclusions on construction effects in the Environmental Statement do not change as a result of the new design.
- 2.4.31 The operation of the ecology mitigation area does not generate any noticeable levels of noise and so effects were not predicted within Chapter 12: Noise and vibration [APP-079]. This would be the same for the new design, and so the conclusions of the Environmental Statement do not change.

## **Chapter 13: Population and human health**

- 2.4.32 The reduction in size of the ecology mitigation area would result in a slight reduction in overall land-take from Agricultural Landholding 5 (reported in Environmental Statement Appendix 13.3: Land Use and Accessibility Assessment Tables [APP-155]). However, this would likely be less than 0.2ha,

whereas overall it has been predicted that approximately 35ha of land within the landholding would be permanently acquired for the proposed scheme. The land would still be lost to the Anglian Water pumping station.

- 2.4.33 No notable change in impact is identified from the new design on private property and housing, community land and assets or development land and business.
- 2.4.34 There would be no change in impacts predicted for walkers, cyclists and horse riders from the new design.
- 2.4.35 No change in impact on human health is anticipated from that assessed within the Environmental Statement on the basis that there is no change in health determinants impacted on from the new design.

#### **Design, mitigation and enhancement measures**

- 2.4.36 The new design would not affect the mitigation outlined in Environmental Statement Chapter 13: Population and human health [APP-080]. Overall, there would still be a loss of agricultural land and therefore the mitigation proposals set out in the Environmental Statement remain appropriate.
- 2.4.37 There would be no change in mitigation for other matters within Chapter 13: Population and human health [APP-080], as there would be no change to the potential impacts.

#### **Assessment of likely significant effects**

- 2.4.38 The potentially reduced impact on arable land use would not materially change the assessment of likely significant effects. The change in impact would be marginal and not notably reduce the overall effect on agricultural landholdings concluded in section 13.20 of Chapter 13: Population and human health [APP-080], where the loss of agricultural land is assessed as large adverse.
- 2.4.39 There would be no change in effects for other matters within Chapter 13: Population and human health [APP-080], as there would be no change to the potential impacts.

### **Chapter 14: Road drainage and the water environment**

#### **Potential impacts**

- 2.4.40 The reduction in size of the ecology mitigation area does not result in any changes to the potential impacts reported in Section 14.9 of Environmental Statement Chapter 14: Road drainage and the water environment [APP-081].

#### **Design, mitigation and enhancement measures**

- 2.4.41 The new layout does not necessitate any changes to be made to the design, mitigation and enhancement measures reported in Section 14.10 of Chapter 14: Road drainage and the water environment [APP-081], as there is no change to the potential impacts.

#### **Assessment of likely significant effects**

- 2.4.42 The changes from the new layout would not be at a level that would generate any new or different likely significant effects to those already reported for the proposed scheme, and there is therefore no change to the reported residual

significance of effects for the water environment reported in Section 14.11 of Chapter 14: Road drainage and the water environment [APP-081].

## Chapter 15: Climate

### Potential impacts

- 2.4.43 The proposed changes to the ecology mitigation area would not substantially influence the quantities of materials required to construct the proposed scheme, nor affect traffic flows with the proposed scheme in place. As such, the proposed changes would not have a material impact on the magnitude of estimated changes in greenhouse gas (GHG) emissions associated with the proposed scheme.
- 2.4.44 Furthermore, the proposed changes would not alter the vulnerability of the proposed scheme to future changes in climate.

### Design, mitigation and enhancement measures

- 2.4.45 The mitigation measures presented in Environmental Statement Chapter 15: Climate [APP-082] are considered to remain valid, and therefore no changes to the measures presented in the Environmental Statement are required.

### Assessment of likely significant effects

- 2.4.46 As neither emissions of GHGs nor the vulnerability of the proposed scheme to climate change would be affected by the proposed changes, then the conclusions set out in Chapter 15: Climate [APP-082] remain unchanged.

## Chapter 16: Cumulative effects assessment

### Potential impacts

- 2.4.47 In accordance with Environmental Statement Chapter 16: Cumulative effects assessment [APP-083], material assets and waste and climate have been scoped out of the assessment of cumulative effects.
- 2.4.1 The remaining individual topic sections above have been reviewed in order to identify any changes to individual topic effects before then considering how any such changes may contribute to changes in cumulative effects. The findings of this review are shown in Table 2.1.

**Table 2.1 Cumulative effects**

Topic	Potential for cumulative effects
Air quality	There would be no change to the air quality effects reported in Environmental Statement Chapter 6: Air quality [APP-073]. Therefore, there would be no change to the cumulative effects reported in Environmental Statement Chapter 16: Cumulative effects assessment [APP-083].
Cultural heritage	There would be no change to the cultural heritage effects reported in Environmental Statement Chapter 7: Cultural heritage [APP-074]. Therefore, there would be no change to the cumulative effects reported in Environmental Statement Chapter 16: Cumulative effects assessment [APP-083].

Topic	Potential for cumulative effects
Landscape and visual	There would be no change to the significant effects reported in Environmental Statement Chapter 8: Landscape and visual [APP-075]. Therefore, there would be no change to the cumulative effects reported in Environmental Statement Chapter 16: Cumulative effects assessment [APP-083].
Biodiversity	There would be no change to the significant effects reported in Environmental Statement Chapter 9: Biodiversity [APP-076]. Therefore, there would be no change to the cumulative effects reported in Environmental Statement Chapter 16: Cumulative effects assessment [APP-083].
Geology and soils	There would be no change to the significant effects reported in Environmental Statement Chapter 10: Geology and soils [APP-077]. Therefore, there would be no change to the cumulative effects reported in Environmental Statement Chapter 16: Cumulative effects assessment [APP-083].
Noise and vibration	There would be no change to the significant effects reported in Environmental Statement Chapter 12: Noise and vibration [APP-079]. Therefore, there would be no change to the cumulative effects reported in Environmental Statement Chapter 16: Cumulative effects assessment [APP-083].
Population and human health	There would be no change to the significant effects reported in Environmental Statement Chapter 13: Population and human health [APP-080]. Therefore, there would be no change to the cumulative effects reported in Environmental Statement Chapter 16: Cumulative effects assessment [APP-083].
Road drainage and the water environment	There would be no change to the likely significant effects reported in Environmental Statement Chapter 14: Road drainage and the water Environment [APP-081]. Therefore, there would be no change to the cumulative effects reported in Environmental Statement Chapter 16: Cumulative effects assessment [APP-083].

### Design, mitigation and enhancement measures

- 2.4.2 No new or different cumulative effects are predicted from the new design, hence no design, mitigation and enhancement measures are required.

### Assessment of likely significant effects

- 2.4.3 There is no change to the reported assessment of cumulative effects in Chapter 16: Cumulative effects assessment [APP-083] due to the new design.

### Overall environment conclusion

- 2.4.4 The change in potential impacts from the reduction in size of the ecology mitigation area are considered negligible. The change in impacts would not be on a scale or magnitude to change the significant effects reported in the Environmental Statement. There are therefore no new or different likely significant effects arising from the new design.

### **3 Conclusion**

- 3.1.1 The change reported on above has resulted in a reduction in the land take in this area. The effects of construction and operation of the proposed scheme would remain consistent with the findings presented within the chapters of the Environmental Statement.