

Lower Thames Crossing
Map Book 3 (Extracts): Engineering Plans

Lower Thames Crossing map books

The three map books for the local refinement consultation contain plans of our proposals under the following headings:

- Map book 1: General Arrangements (layout plans)
- Map book 2: Land Use Plans
- Map book 3 (Extracts): Engineering Plans

Map Books 1 and 2 have a north up orientation.

These plans include the changes we have made since our community impacts consultation last year and are published for the purposes of this consultation.

Following this consultation, we will consider the feedback received and use that to inform our Development Consent Order (DCO) application, which we plan to submit to the Planning Inspectorate later this year.

The plans run from the A2 in the south to the M25 in the north. Identically numbered sheets in Map Books 1 and 2 show the same area. For example, sheet 3 shows the A2/Lower Thames Crossing junction in Map Books 1 and 2.

Map Book 1: General Arrangements

The General Arrangements show the proposed layout of the project, including:

- Permanent works; new roads, earthworks and roadside features
- Environment mitigation; landscaping and tree planting
- Utilities works and diversions
- Order Limits (previously known as the development boundary)
- Open space provision, replacement open space and replacement common land

NB: The key plans show the relative location of each drawing sheet within the map book and the area they cover.

Map Book 2: Land Use Plans

The land use plans show the areas where we are seeking powers to compulsorily acquire land or to acquire rights on, under or over land. They also show where we will need to use land temporarily to build the project. Areas we may need to compulsorily acquire or acquire permanent rights over include land required for the permanent works, utility diversions, compensation land and replacement land.

Permanent works

Compulsory purchase of land or compulsory acquisition of rights will be required for the route of the road, to reconnect local roads, and for associated structures like drainage ponds and the tunnel control building. In some areas, such as the tunnel beneath the River Thames, only the acquisition of subsoil and permanent rights at the surface would be necessary. We will also require permanent rights over land to divert and maintain utilities such as gas pipelines, electricity cables and water pipes.

Temporary works

Temporary use of land is needed for the project's construction works and to provide sufficient space to do so safely. The land use plans show land that may be required temporarily for the main construction compounds and at various locations along the route.

Environmental mitigation land

Environmental mitigation land may include protection measures such as: landscape planting including woodland and grassland habitats, habitat creation for protected species, ancient woodland compensation planting, nitrogen deposition compensation planting and flood compensation. This land would be permanently acquired or be subject to permanent rights.

Replacement land

Land is also included for the replacement of special category land, this includes existing open space and common land which is being compulsorily acquired or over which permanent rights are sought.

Map Book 3 (Extracts): Engineering Plans

Only the engineering drawings that have changed since the community impacts consultation have been provided in this map book. These are sheets 12-13 inclusive and sheets 16-19 inclusive. For sheets 12-13 around the A13 / A1089 junction and Orsett Cock junction, only the design of the slip roads and connections has changed, rather than the main LTC route and A13. For clarity, we have shown those changes on the sheets as boxed labels and indicated the LTC route design presented at the community impacts consultation in summer 2021.

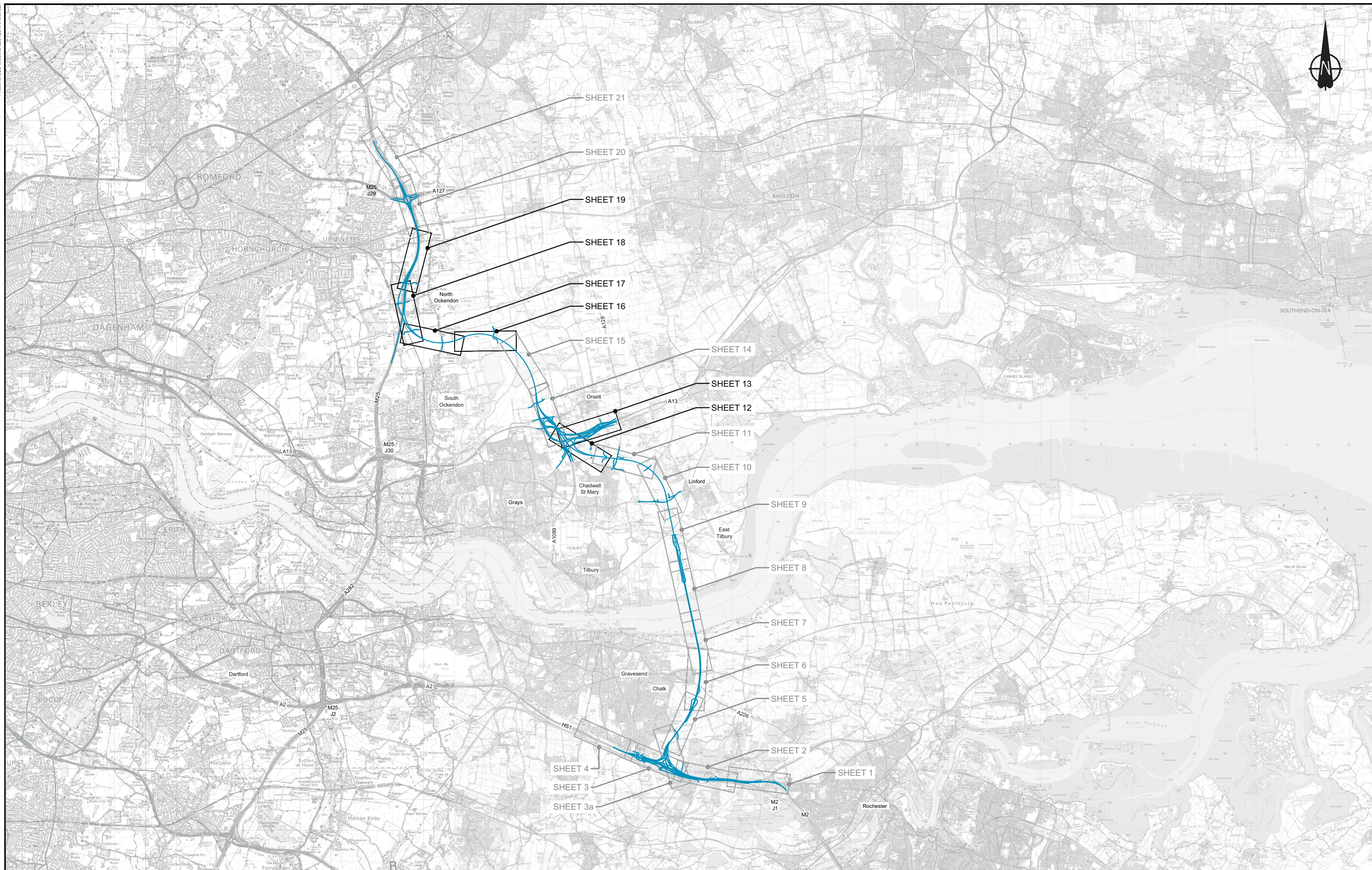
For the remaining sheets not included in these extracts, please see our engineering drawings published for the community impacts consultation, available at <https://highwaysengland.citizenspace.com/ltc/community-impacts-consultation-2021>

The engineering drawings show the highway details of the route in plan and profile (level above or below existing ground). The drawings are split into two views with the plan on the top and profile underneath. The profile gives the road level in relation to existing ground at a given chainage*. An exaggerated scale is used in the profile to help show the differences in levels and gradients of the design. The profile also shows where existing roads and public rights of way cross over or under the route.

All levels are given in relation to the Above Ordnance Datum level** the profile reference level might be different on each drawing.

* Chainage measures the distance along the route in metres.

** Above Ordnance Datum level (AOD) is a measurement above mean sea level taken from a reference point at Newlyn in Cornwall.



LEGEND:

- Lower Thames Crossing (LTC)
- Map book sheets excluded - see community impacts consultation map book 3
- Map book sheet extracts included

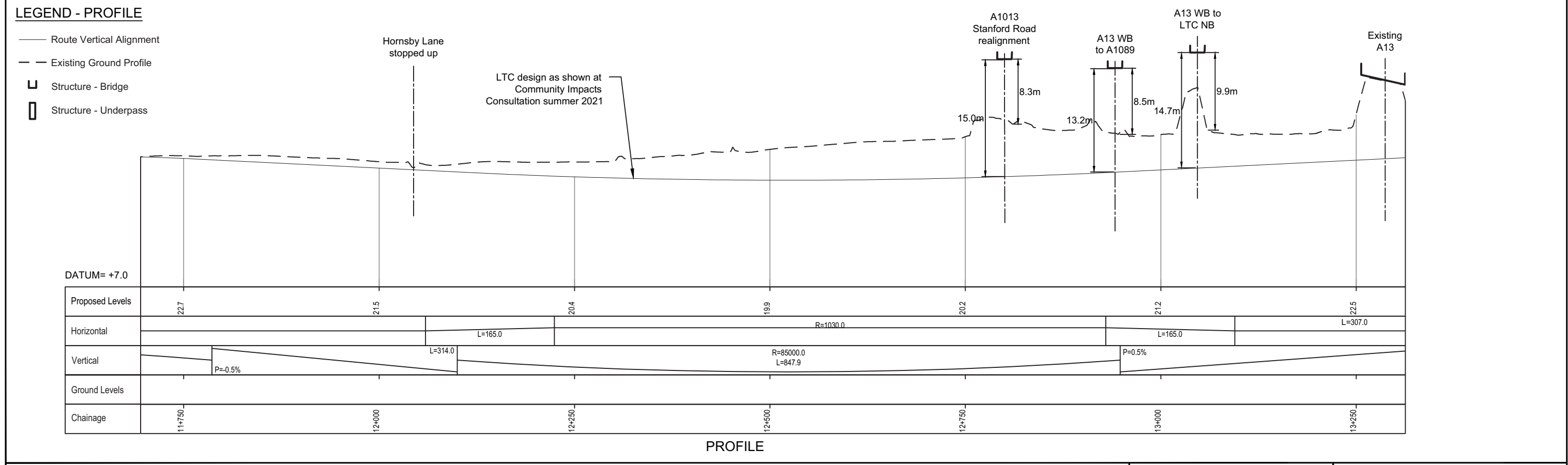
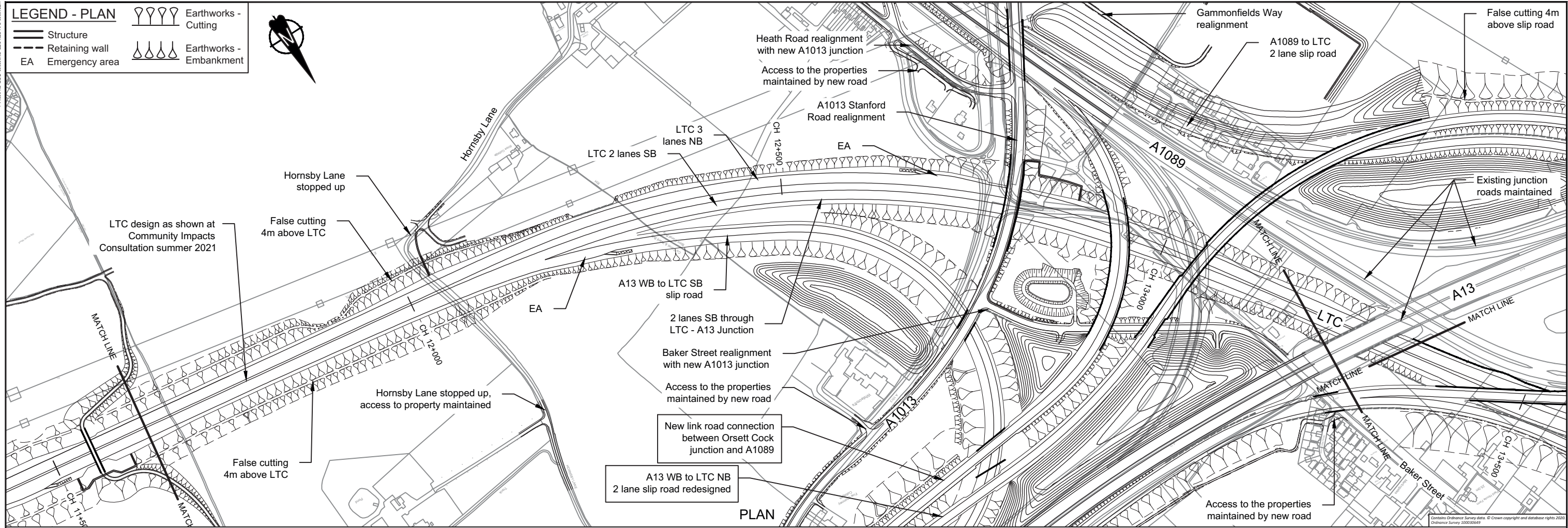
Client



PROPOSALS FOR CONSULTATION

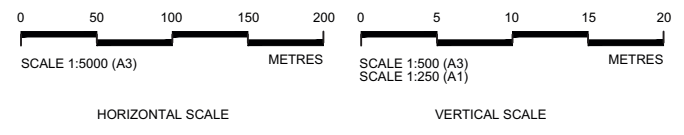
Project **LOWER THAMES CROSSING LOCAL REFINEMENT CONSULTATION**

Drawing title **PLAN AND PROFILE KEY PLAN**



- ### NOTES
- Do not scale from this drawing.
 - All dimensions are in metres unless stated otherwise.
 - All levels are in metres relative to the Ordnance Datum.
 - For scheme location refer to Plan and Profile Key Plan.
 - Profile uses an exaggerated scale of 1 horizontal :10 vertical
 - Labels in plan highlighted with border relate to Local Refinement consultation design changes

NB - Northbound
 WB - Westbound
 EB - Eastbound
 SB - Southbound

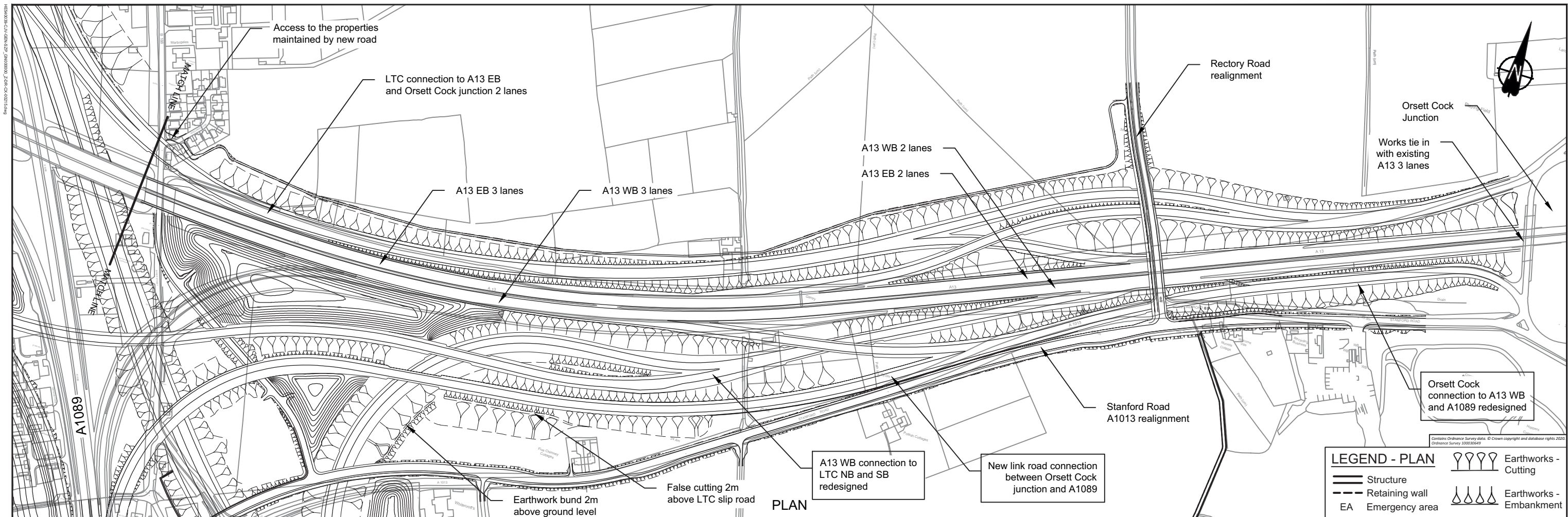


Client

PROPOSALS FOR CONSULTATION

Project LOWER THAMES CROSSING LOCAL REFINEMENT CONSULTATION

Drawing title **PLAN AND PROFILE SHEET 12**

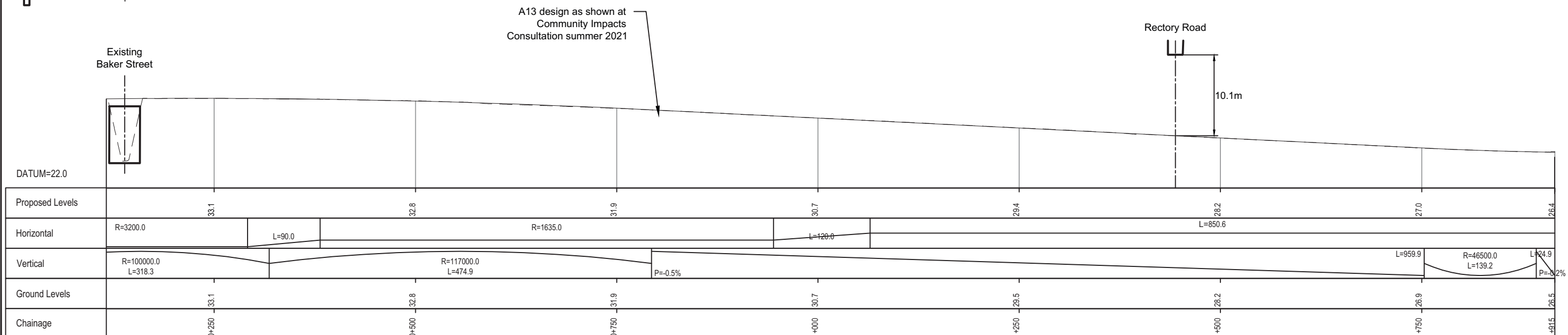


LEGEND - PLAN

- Structure
- Retaining wall
- EA Emergency area
- Earthworks - Cutting
- Earthworks - Embankment

LEGEND - PROFILE

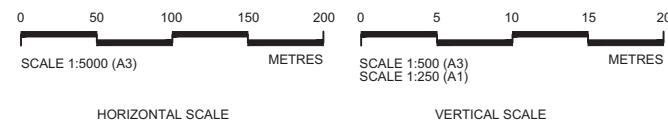
- Route Vertical Alignment
- Existing Ground Profile
- Structure - Bridge
- Structure - Underpass



PROFILE

- NOTES**
- Do not scale from this drawing.
 - All dimensions are in metres unless stated otherwise.
 - All levels are in metres relative to the Ordnance Datum.
 - For scheme location refer to Plan and Profile Key Plan.
 - Profile uses an exaggerated scale of 1 horizontal :10 vertical
 - Labels in plan highlighted with border relate to Local Refinement consultation design changes

- NB - Northbound
- WB - Westbound
- EB - Eastbound
- SB - Southbound

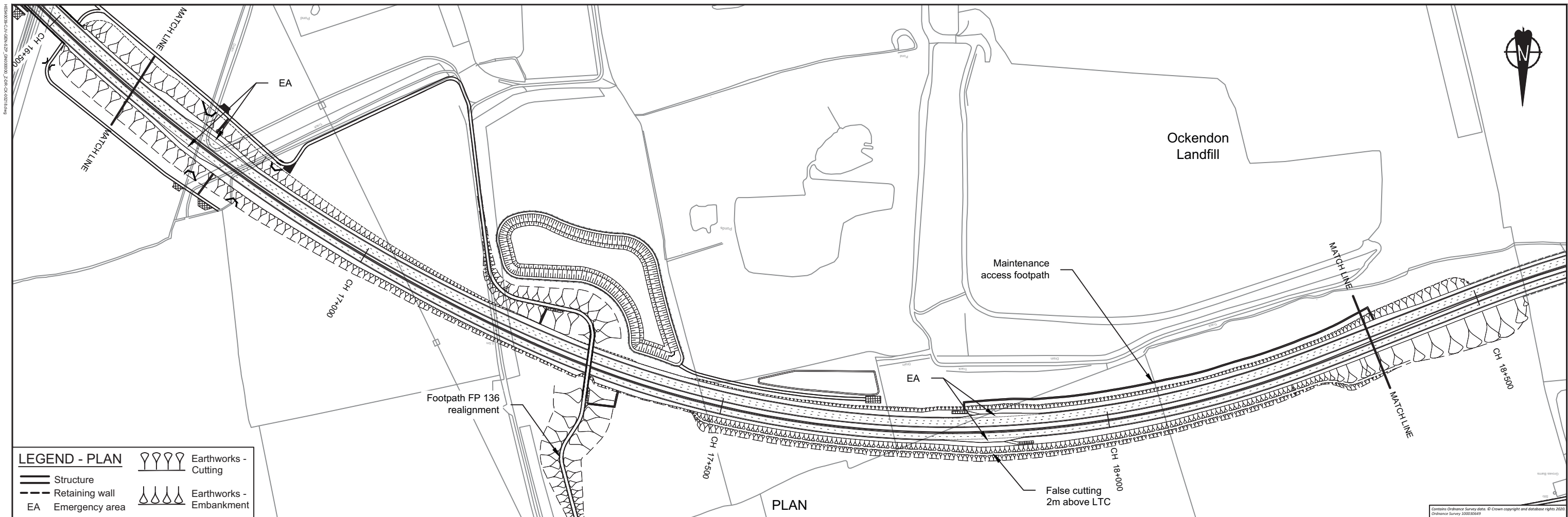


Client

PROPOSALS FOR CONSULTATION

Project LOWER THAMES CROSSING LOCAL REFINEMENT CONSULTATION

Drawing title **PLAN AND PROFILE SHEET 13**

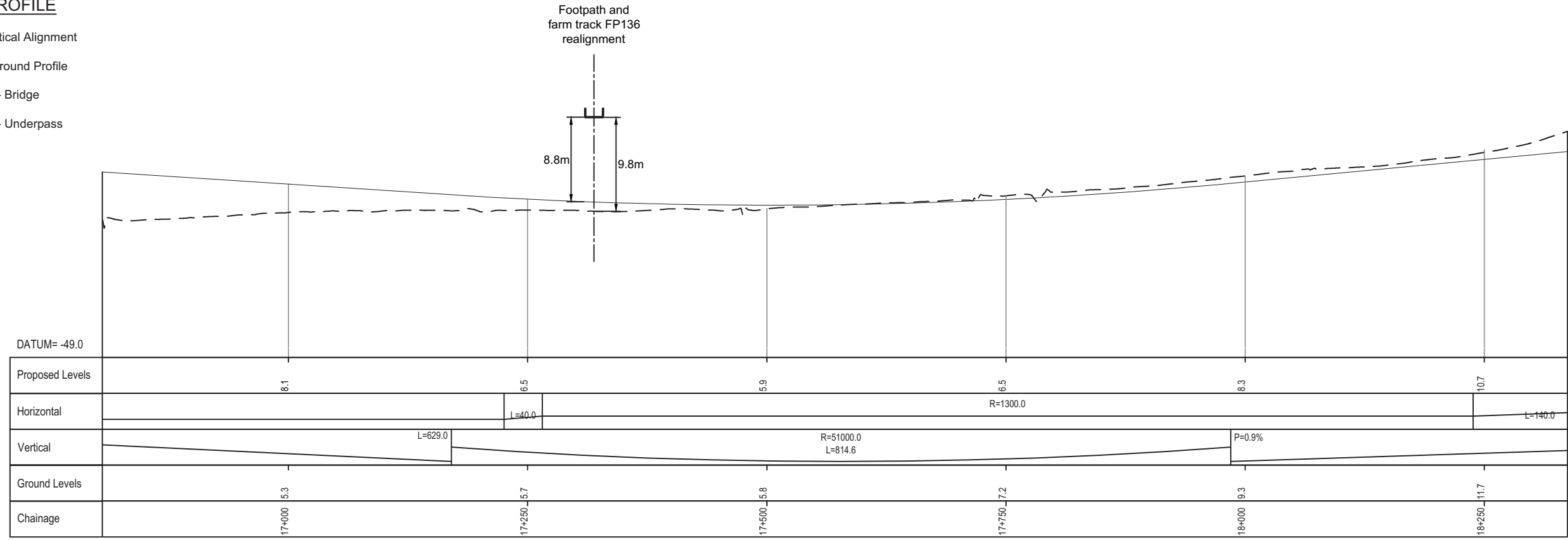


LEGEND - PLAN

	Earthworks - Cutting
	Structure
	Retaining wall
	EA Emergency area
	Earthworks - Embankment

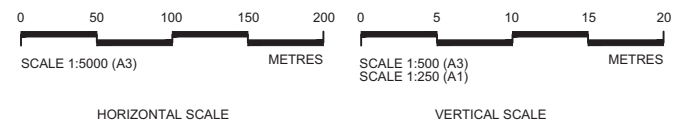
LEGEND - PROFILE

- Route Vertical Alignment
- Existing Ground Profile
- Structure - Bridge
- Structure - Underpass



- NOTES**
- Do not scale from this drawing.
 - All dimensions are in metres unless stated otherwise.
 - All levels are in metres relative to the Ordnance Datum.
 - For scheme location refer to Plan and Profile Key Plan.
 - Profile uses an exaggerated scale of 1 horizontal :10 vertical

- NB - Northbound
- WB - Westbound
- EB - Eastbound
- SB - Southbound



Client

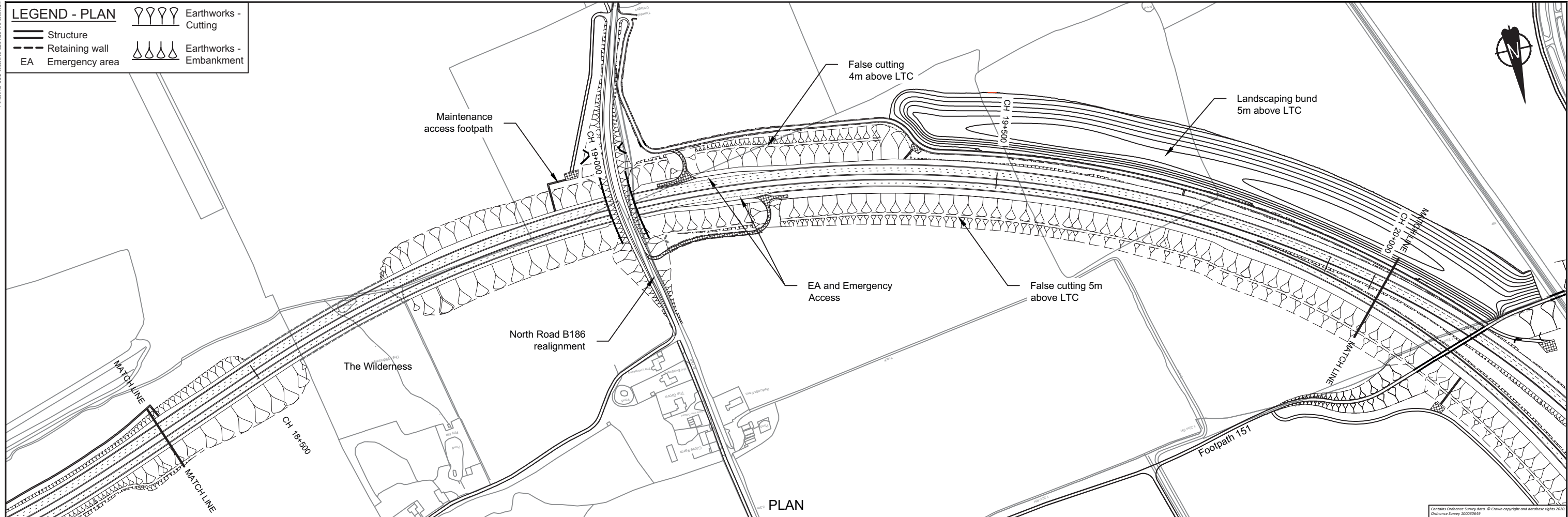
PROPOSALS FOR CONSULTATION

Project LOWER THAMES CROSSING
LOCAL REFINEMENT CONSULTATION

Drawing title **PLAN AND PROFILE SHEET 16**

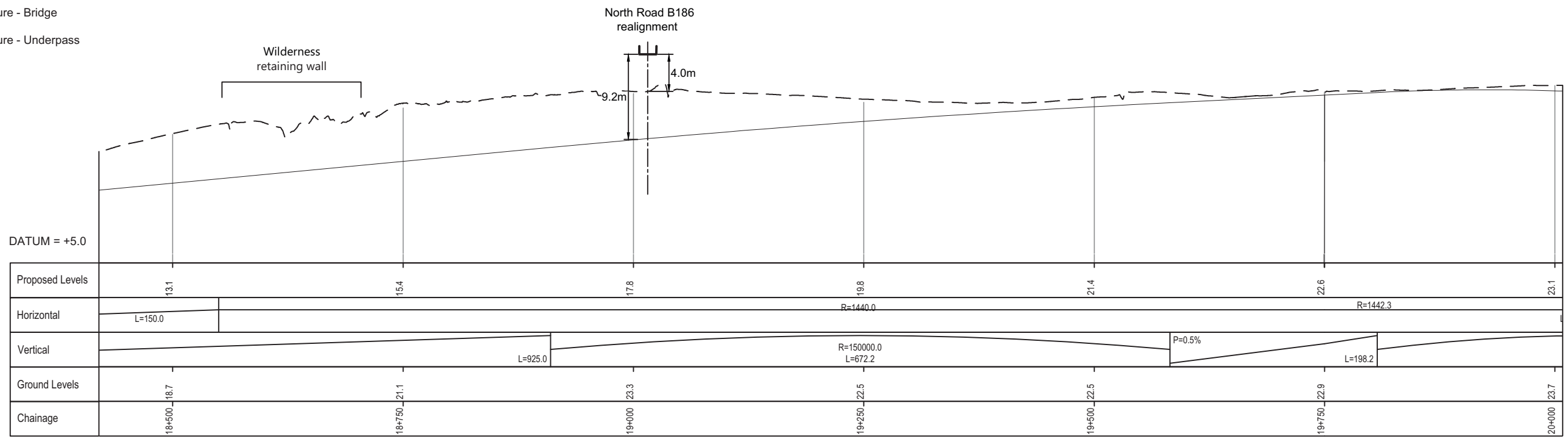
LEGEND - PLAN

	Structure		Earthworks - Cutting
	Retaining wall		Earthworks - Embankment
	EA		Emergency area



LEGEND - PROFILE

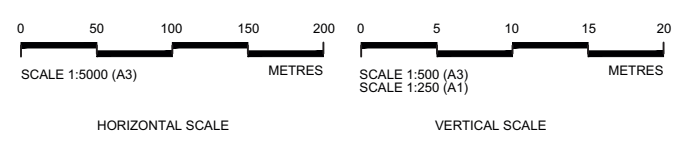
	Route Vertical Alignment
	Existing Ground Profile
	Structure - Bridge
	Structure - Underpass



PROFILE

- NOTES**
- Do not scale from this drawing.
 - All dimensions are in metres unless stated otherwise.
 - All levels are in metres relative to the Ordnance Datum.
 - For scheme location refer to Plan and Profile Key Plan.
 - Profile uses an exaggerated scale of 1 horizontal :10 vertical

NB - Northbound
 WB - Westbound
 EB - Eastbound
 SB - Southbound

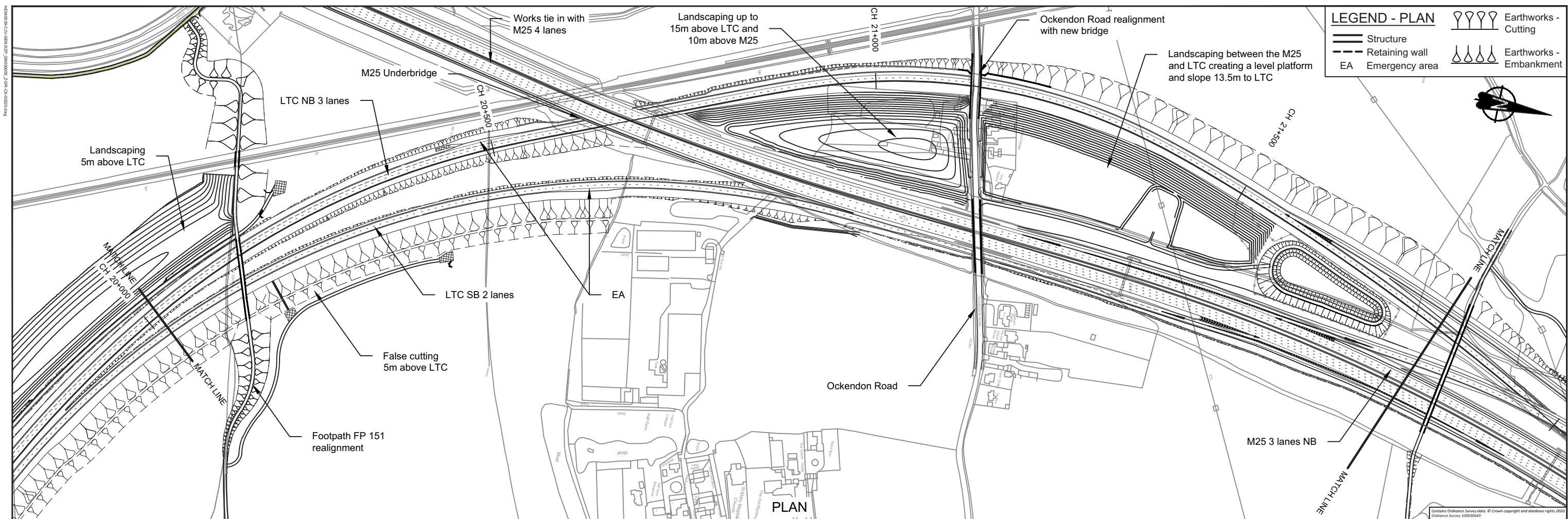


Client

PROPOSALS FOR CONSULTATION

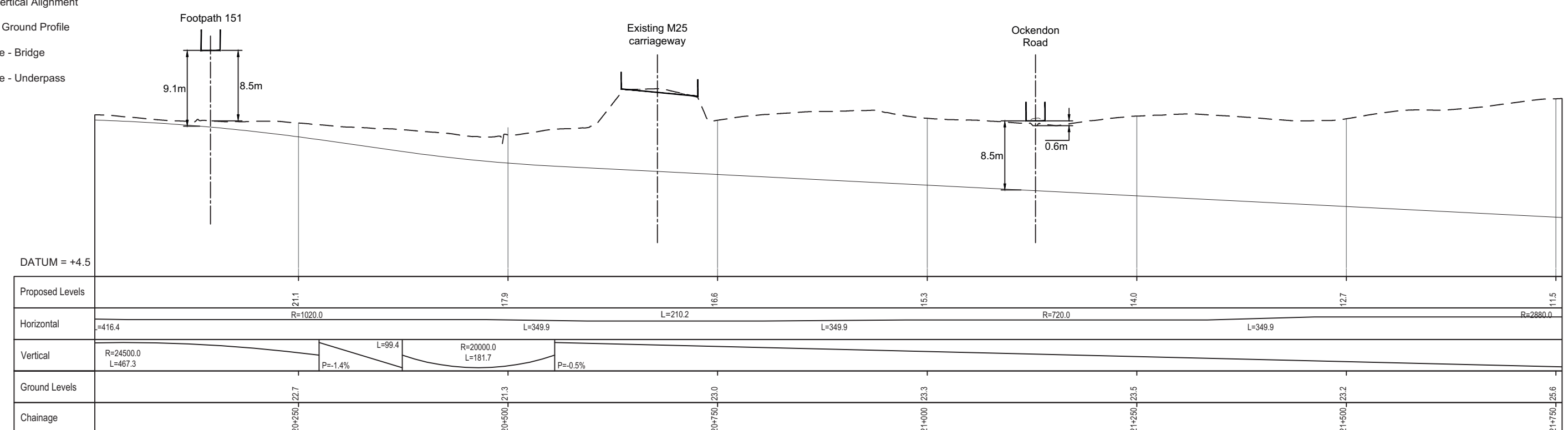
Project LOWER THAMES CROSSING LOCAL REFINEMENT CONSULTATION

Drawing title **PLAN AND PROFILE SHEET 17**



LEGEND - PROFILE

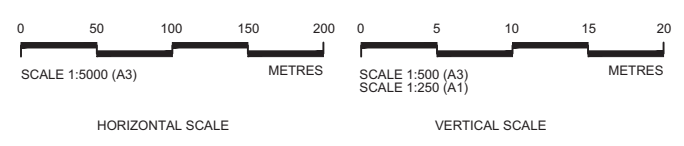
- Route Vertical Alignment
- - Existing Ground Profile
- ▭ Structure - Bridge
- ▭ Structure - Underpass



PROFILE

- NOTES**
- Do not scale from this drawing.
 - All dimensions are in metres unless stated otherwise.
 - All levels are in metres relative to the Ordnance Datum.
 - For scheme location refer to Plan and Profile Key Plan.
 - Profile uses an exaggerated scale of 1 horizontal :10 vertical

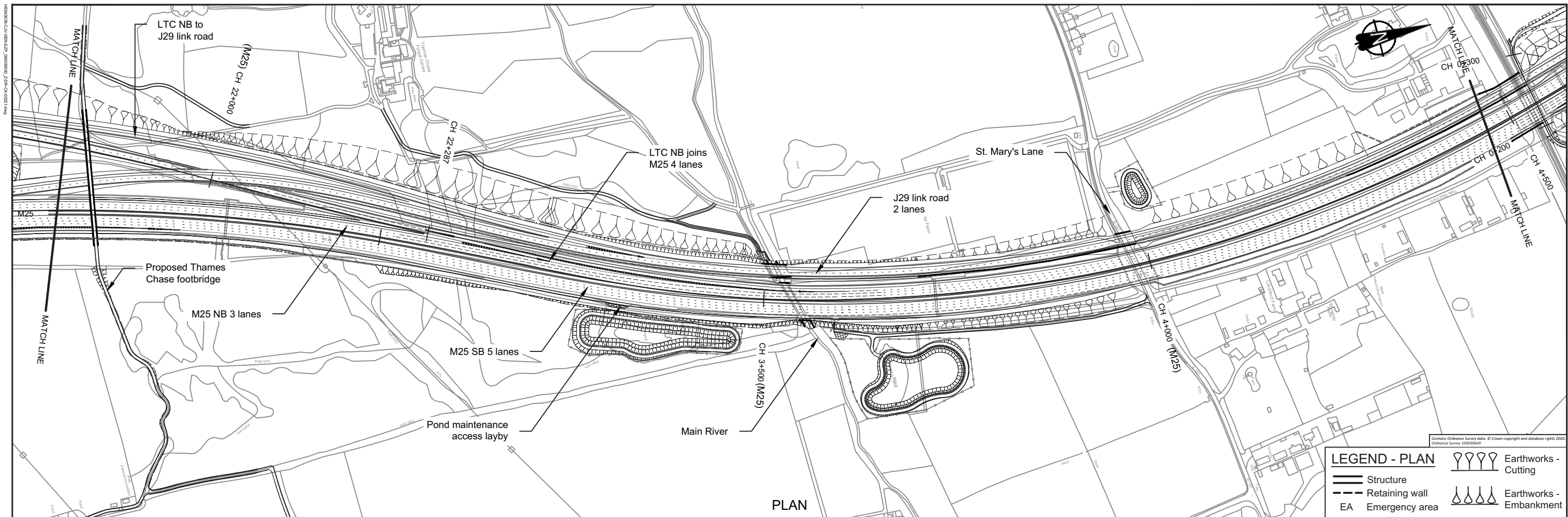
- NB - Northbound
- WB - Westbound
- EB - Eastbound
- SB - Southbound



PROPOSALS FOR CONSULTATION

Project LOWER THAMES CROSSING
LOCAL REFINEMENT CONSULTATION

Drawing title **PLAN AND PROFILE SHEET 18**

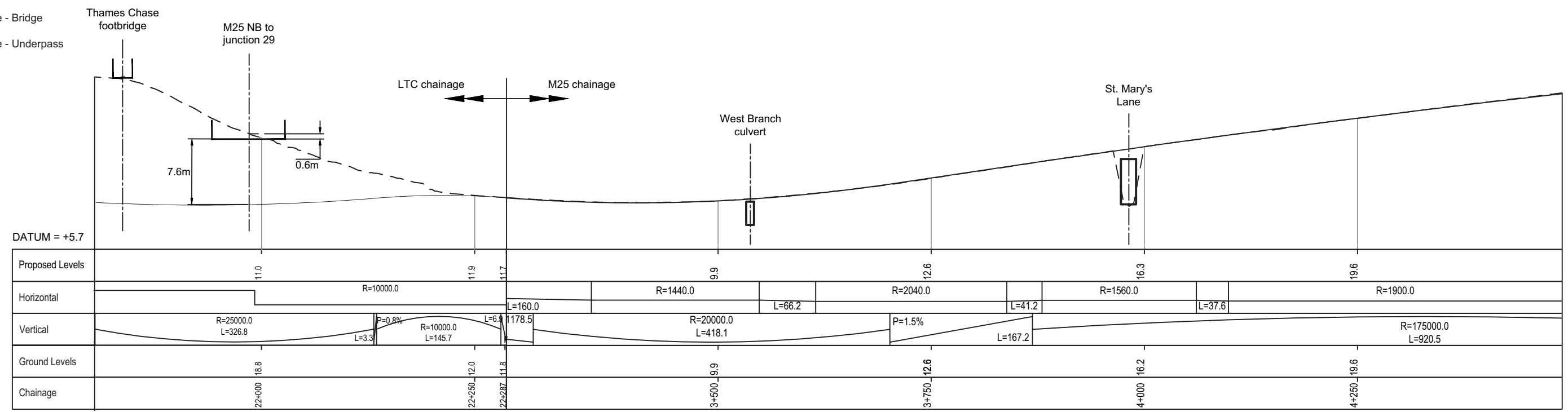


LEGEND - PLAN

- Structure
- Retaining wall
- Emergency area
- Earthworks - Cutting
- Earthworks - Embankment

LEGEND - PROFILE

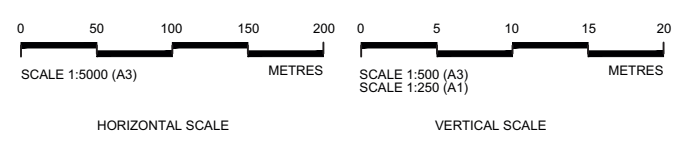
- Route Vertical Alignment
- Existing Ground Profile
- Structure - Bridge
- Structure - Underpass



PROFILE

- NOTES**
- Do not scale from this drawing.
 - All dimensions are in metres unless stated otherwise.
 - All levels are in metres relative to the Ordnance Datum.
 - For scheme location refer to Plan and Profile Key Plan.
 - Profile uses an exaggerated scale of 1 horizontal :10 vertical

- NB - Northbound
- WB - Westbound
- EB - Eastbound
- SB - Southbound



Client

PROPOSALS FOR CONSULTATION

Project LOWER THAMES CROSSING LOCAL REFINEMENT CONSULTATION

Drawing title **PLAN AND PROFILE SHEET 19**



LEGEND:

-  Lower Thames Crossing (LTC)
-  Map book sheets excluded - see community impacts consultation map book 3
-  Map book sheet extracts included

Client



PROPOSALS FOR CONSULTATION

Project **LOWER THAMES CROSSING LOCAL REFINEMENT CONSULTATION**

Drawing title **PLAN AND PROFILE KEY PLAN**

If you need help accessing this or any other National Highways information, please call **0300 123 5000** and we will help you.

Visit our consultation website

 <https://ltcconsultation2022.nationalhighways.co.uk>

© Crown copyright 2022.

You may re-use this information (not including logos) free of charge in any format or medium, under the terms of the Open Government Licence. To view this licence:

visit www.nationalarchives.gov.uk/doc/open-government-licence/

write to the **Information Policy Team, The National Archives, Kew, London TW9 4DU**, or email psi@nationalarchives.gsi.gov.uk.

Mapping (where present): © Crown copyright and database rights 2021 OS 100030649. You are permitted to use this data solely to enable you to respond to, or interact with, the organisation that provided you with the data. You are not permitted to copy, sub-licence, distribute or sell any of this data to third parties in any form.

This document is also available on our website at www.nationalhighways.co.uk

For an accessible version of this publication please call **0300 123 5000** and we will help you.

If you have any enquiries about this publication email info@nationalhighways.co.uk or call **0300 123 5000**. Please quote the National Highways publications code **PR85/22**.

National Highways creative job number BED22 0029

*Calls to 03 numbers cost no more than a national rate call to an 01 or 02 number and must count towards any inclusive minutes in the same way as 01 and 02 calls.

These rules apply to calls from any type of line including mobile, BT, other fixed line or payphone. Calls may be recorded or monitored.

Printed on paper from well-managed forests and other controlled sources when issued directly by National Highways.

Registered office Bridge House, 1 Walnut Tree Close, Guildford GU1 4LZ

National Highways Limited registered in England and Wales number 09346363