







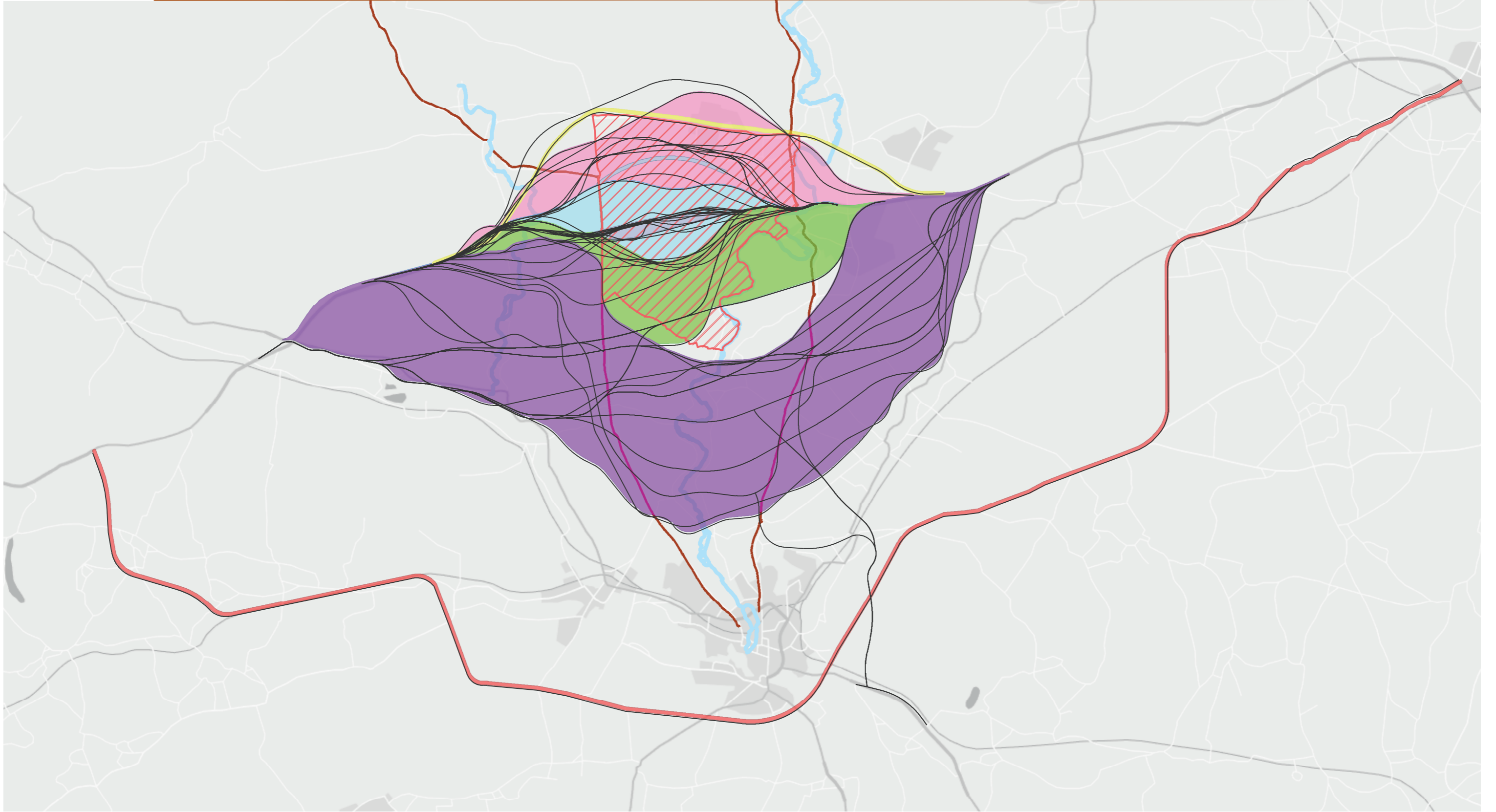
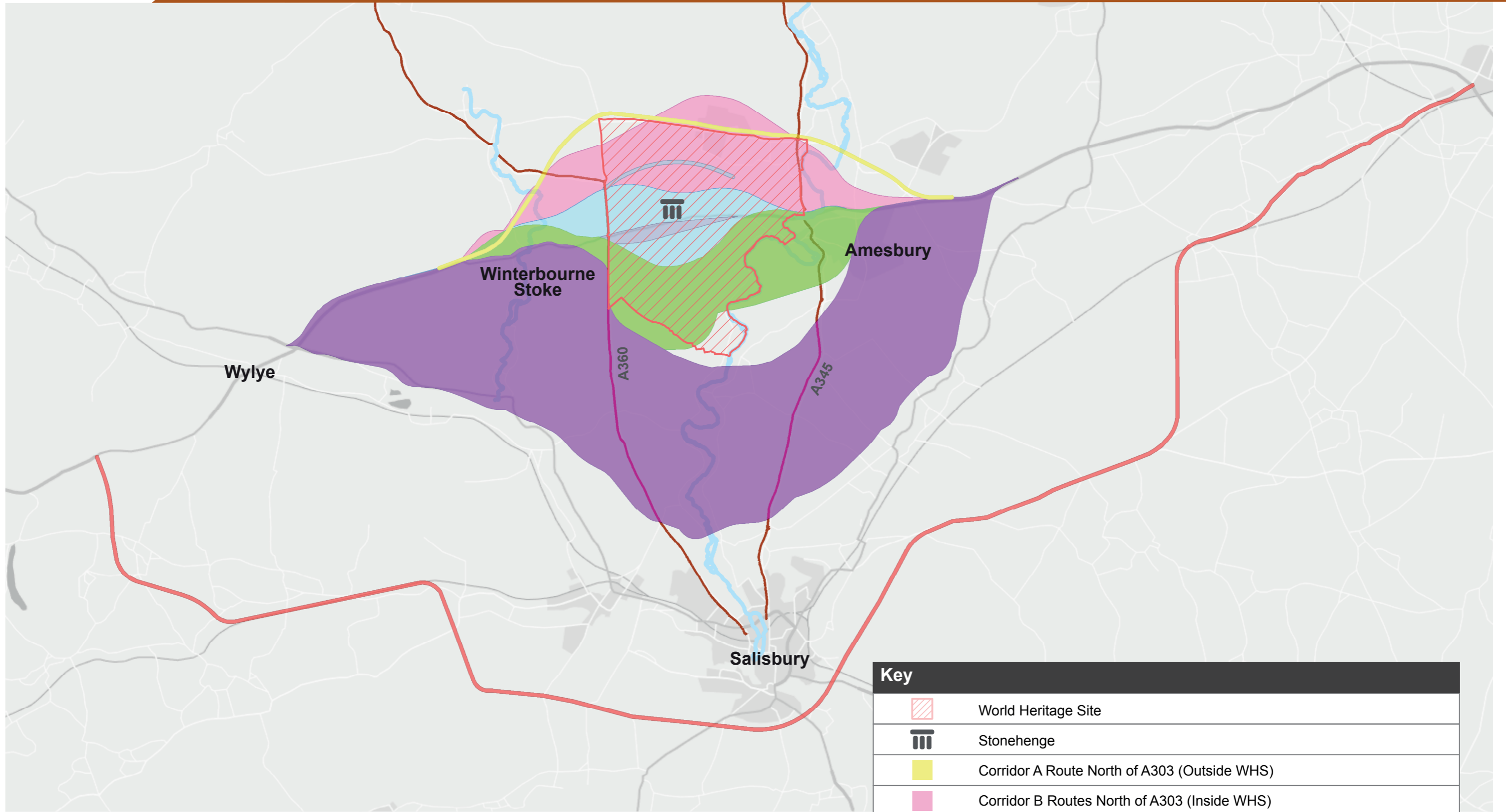
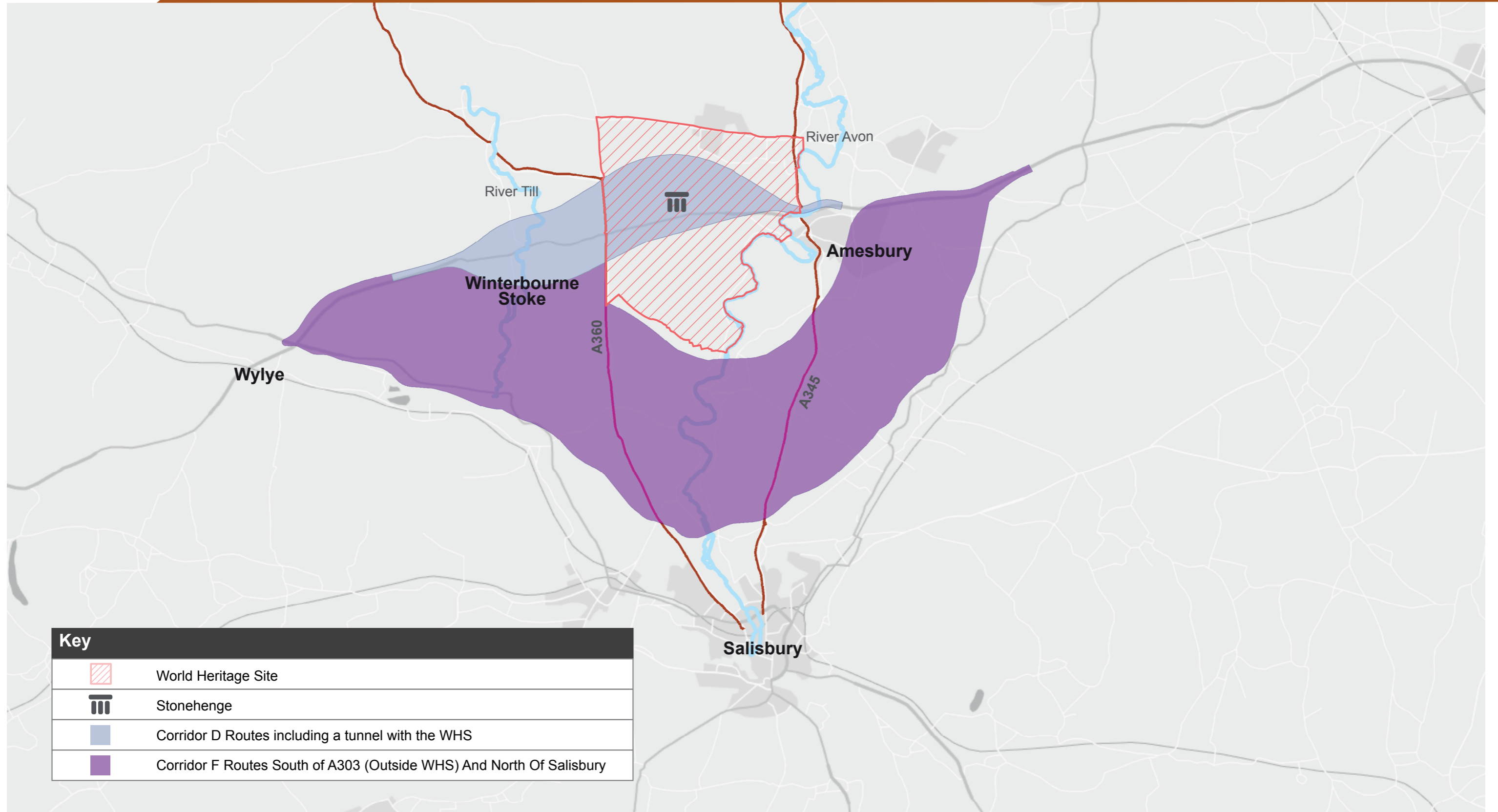


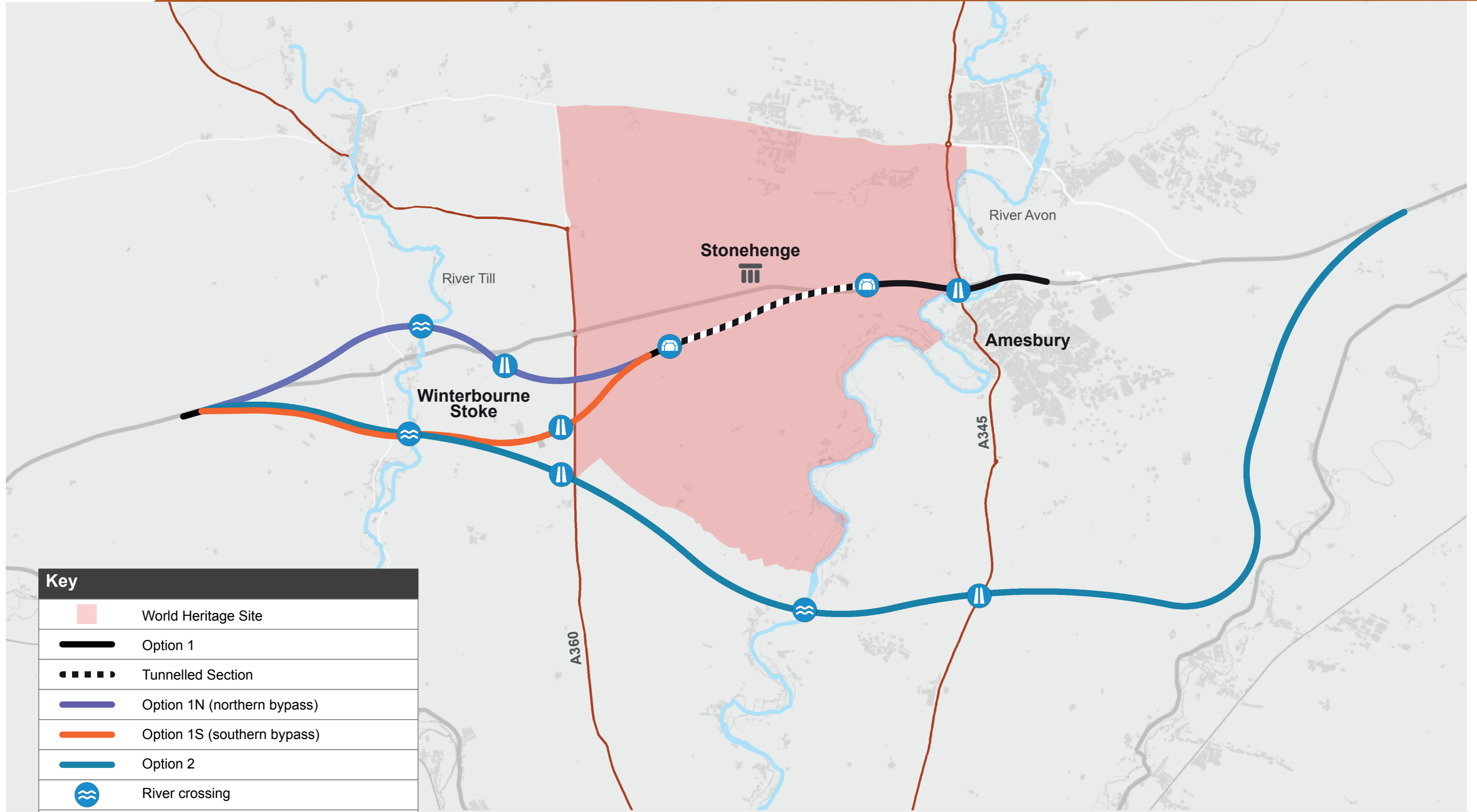
Key	
	World Heritage Site
	Proposed route
	Proposed tunnel
	Northern bypass
	Southern bypass
	River crossing
	Junction search area
	Portal



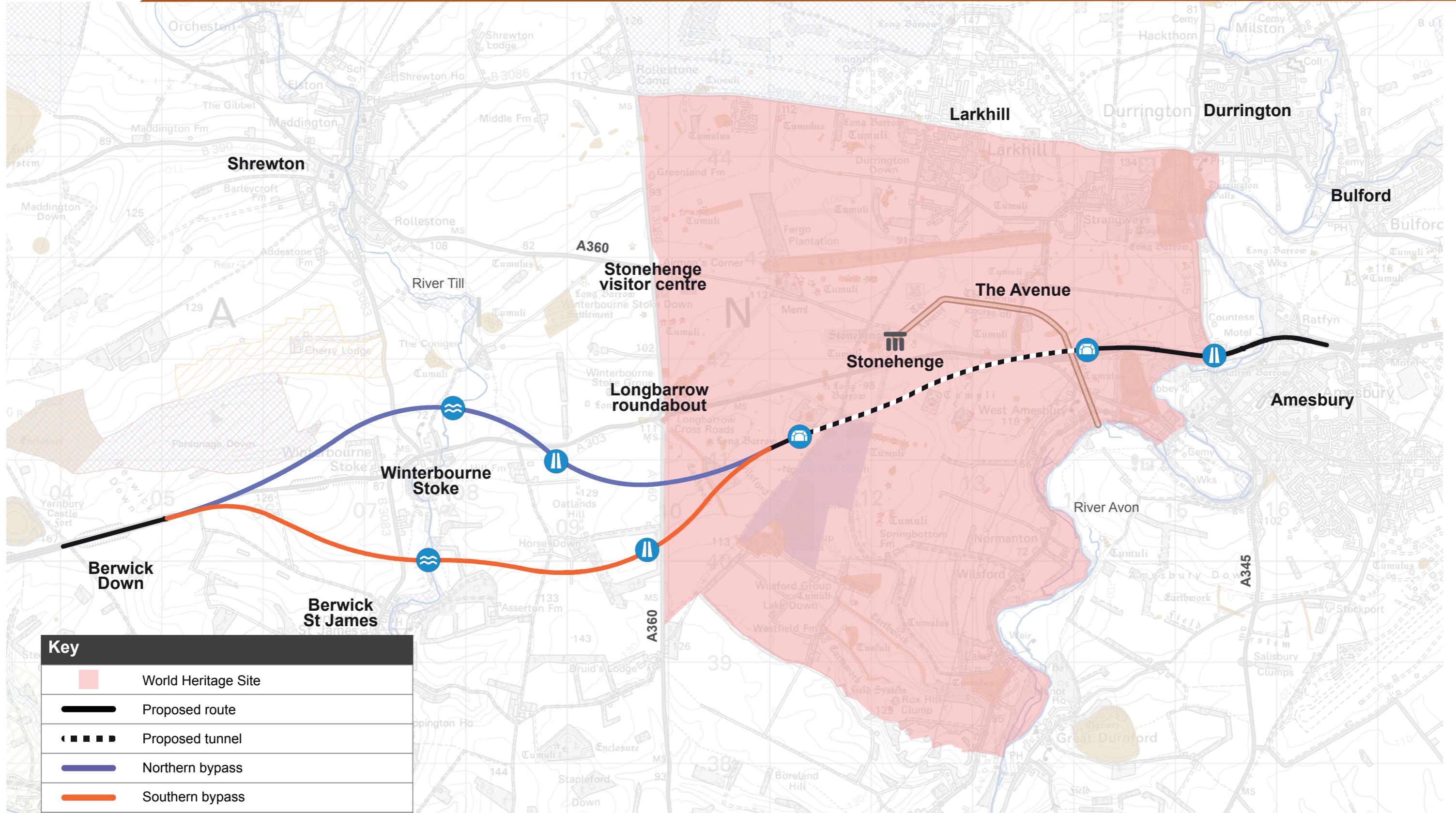


Key	
	World Heritage Site
	Stonehenge
	Corridor A Route North of A303 (Outside WHS)
	Corridor B Routes North of A303 (Inside WHS)
	Corridor C at Routes Within 1km of A303 (Inside WHS)
	Corridor D Routes including a tunnel with the WHS
	Corridor E Routes South of A303 (Inside WHS)
	Corridor F Routes South of A303 (Outside WHS) And North Of Salisbury
	Corridor G Route South of A303 (Outside WHS) And South Of Salisbury





Key	
	World Heritage Site
	Option 1
	Tunnelled Section
	Option 1N (northern bypass)
	Option 1S (southern bypass)
	Option 2
	River crossing
	Junction search area
	Portal



Key	
	World Heritage Site
	Proposed route
	Proposed tunnel
	Northern bypass
	Southern bypass
	River crossing
	Junction search area
	Portal