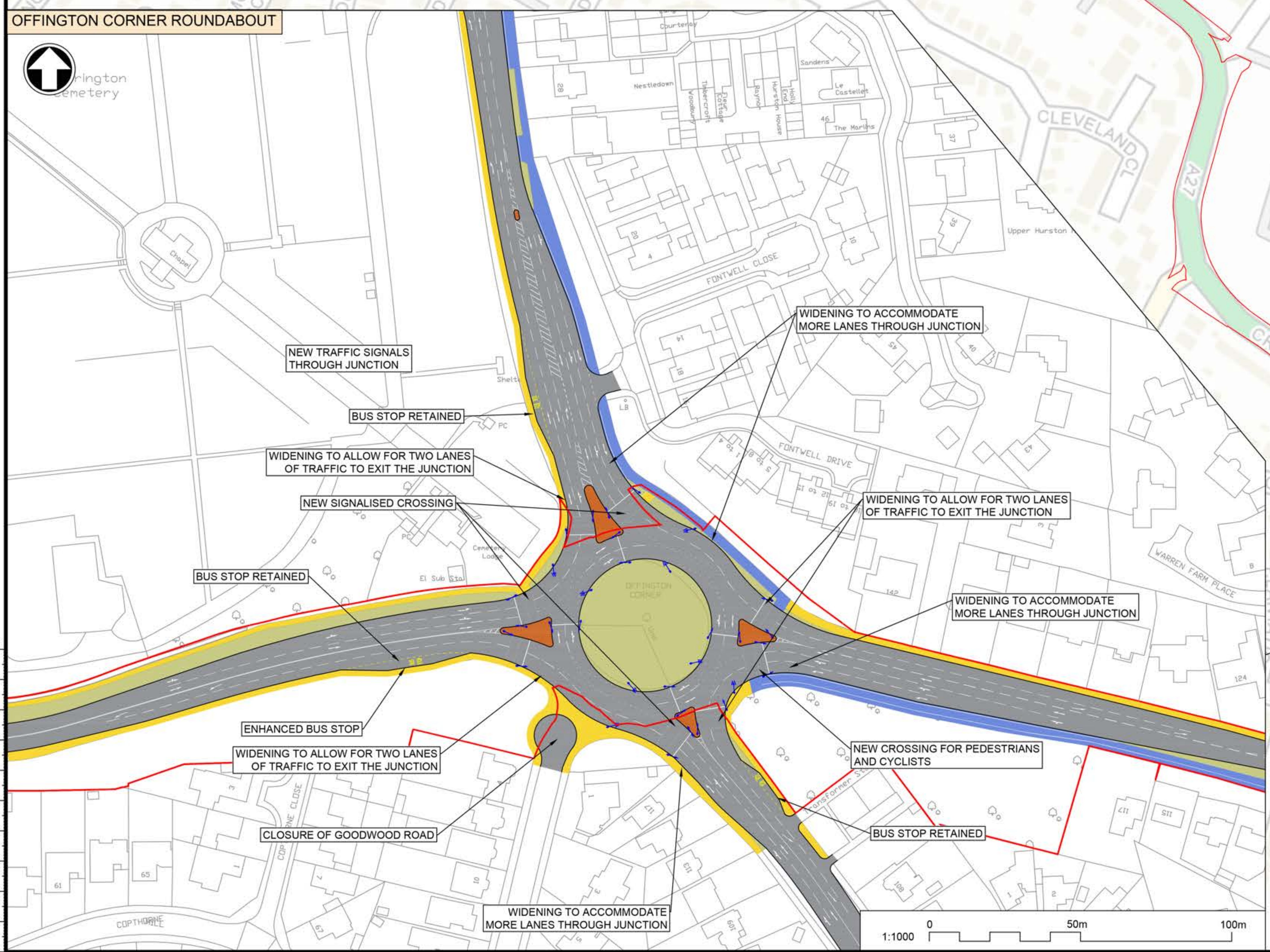


**Notes**

1. PROPOSAL SHOWN ON THIS DRAWING HAVE BEEN DEVELOPED FOR PCF STAGE 1 - OPTION IDENTIFICATION AND PCF STAGE 2 - OPTION SELECTION, AND AS SUCH HAVE BEEN DONE TO A HIGH LEVEL OF DESIGN ONLY. ENGINEERING LAYOUTS ARE ILLUSTRATIVE ONLY.
2. ADDITIONAL ENVIRONMENTAL DESIGNATIONS ARE WITHIN THE STUDY AREA BUT HAVE NOT BEEN SHOWN HERE FOR CLARITY.

**Key to symbols**

<b>INDICATIVE ENVIRONMENTAL AREA</b>	
	SOUTH DOWNS NATIONAL PARK
<b>ILLUSTRATIVE ENGINEERING ARRANGEMENTS</b>	
	ROAD SURFACE
	CENTRAL RESERVES / ISLANDS
	FOOTWAY
	SHARED USE PATH
	PROPOSED GRASSLAND
	PUBLIC RIGHTS OF WAY
	INDICATIVE NATIONAL HIGHWAYS LAND BOUNDARY
	PROPOSED TRAFFIC SIGNAL



Client

Project Title

**A27 WORTHING AND LANCING**

Drawing Title

OPTION 3  
A27 OFFINGTON CORNER ROUNDABOUT  
SHEET 1 OF 4



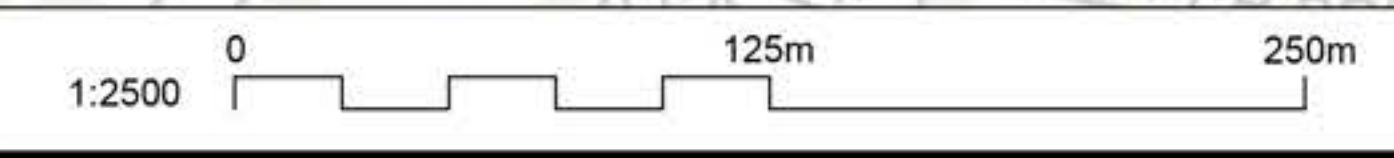
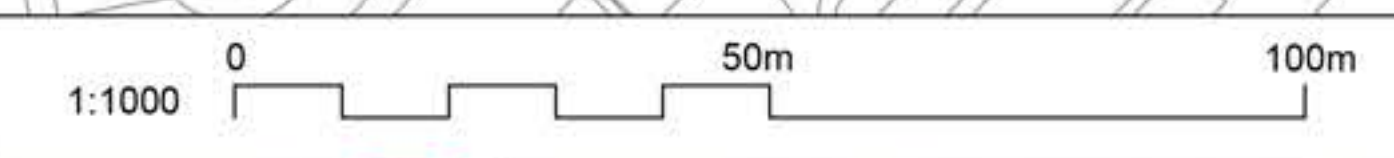


**Notes**

1. PROPOSAL SHOWN ON THIS DRAWING HAVE BEEN DEVELOPED FOR PCF STAGE 1 - OPTION IDENTIFICATION AND PCF STAGE 2 - OPTION SELECTION, AND AS SUCH HAVE BEEN DONE TO A HIGH LEVEL OF DESIGN ONLY. ENGINEERING LAYOUTS ARE ILLUSTRATIVE ONLY.
2. ADDITIONAL ENVIRONMENTAL DESIGNATIONS ARE WITHIN THE STUDY AREA BUT HAVE NOT BEEN SHOWN HERE FOR CLARITY.

**Key to symbols**

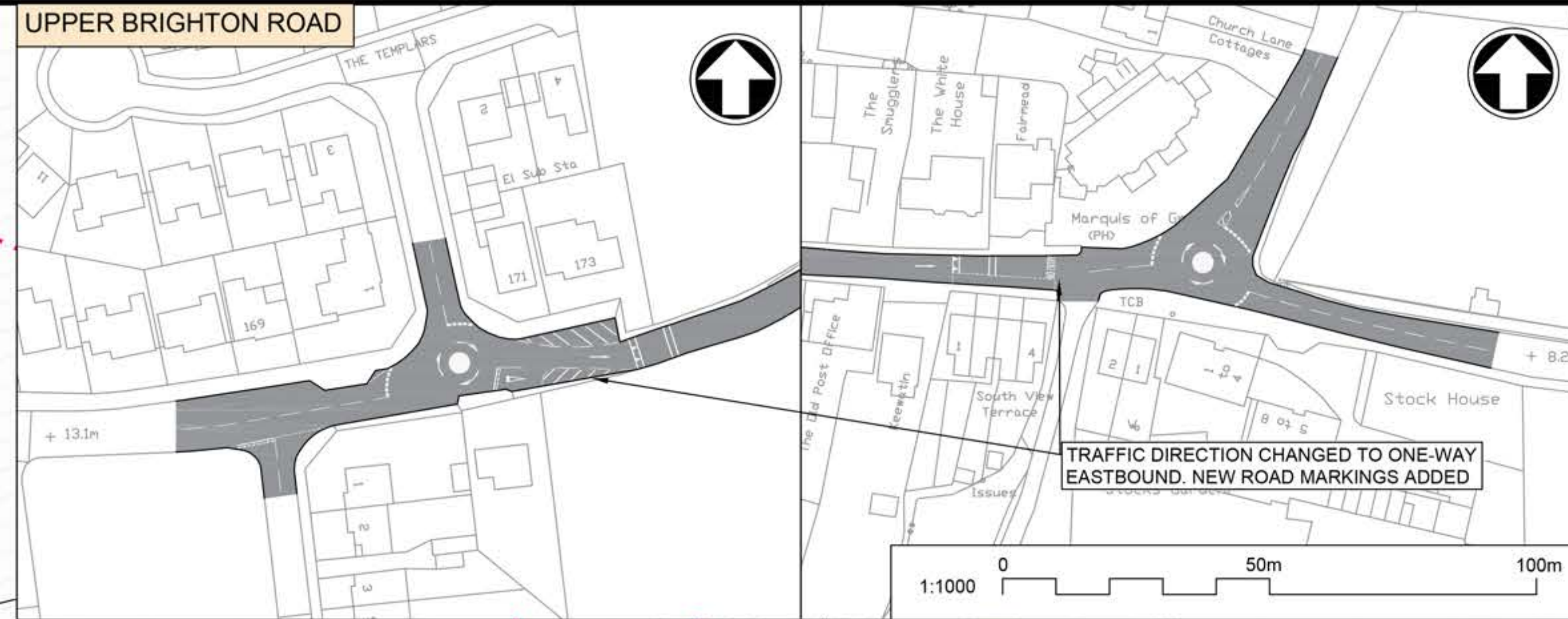
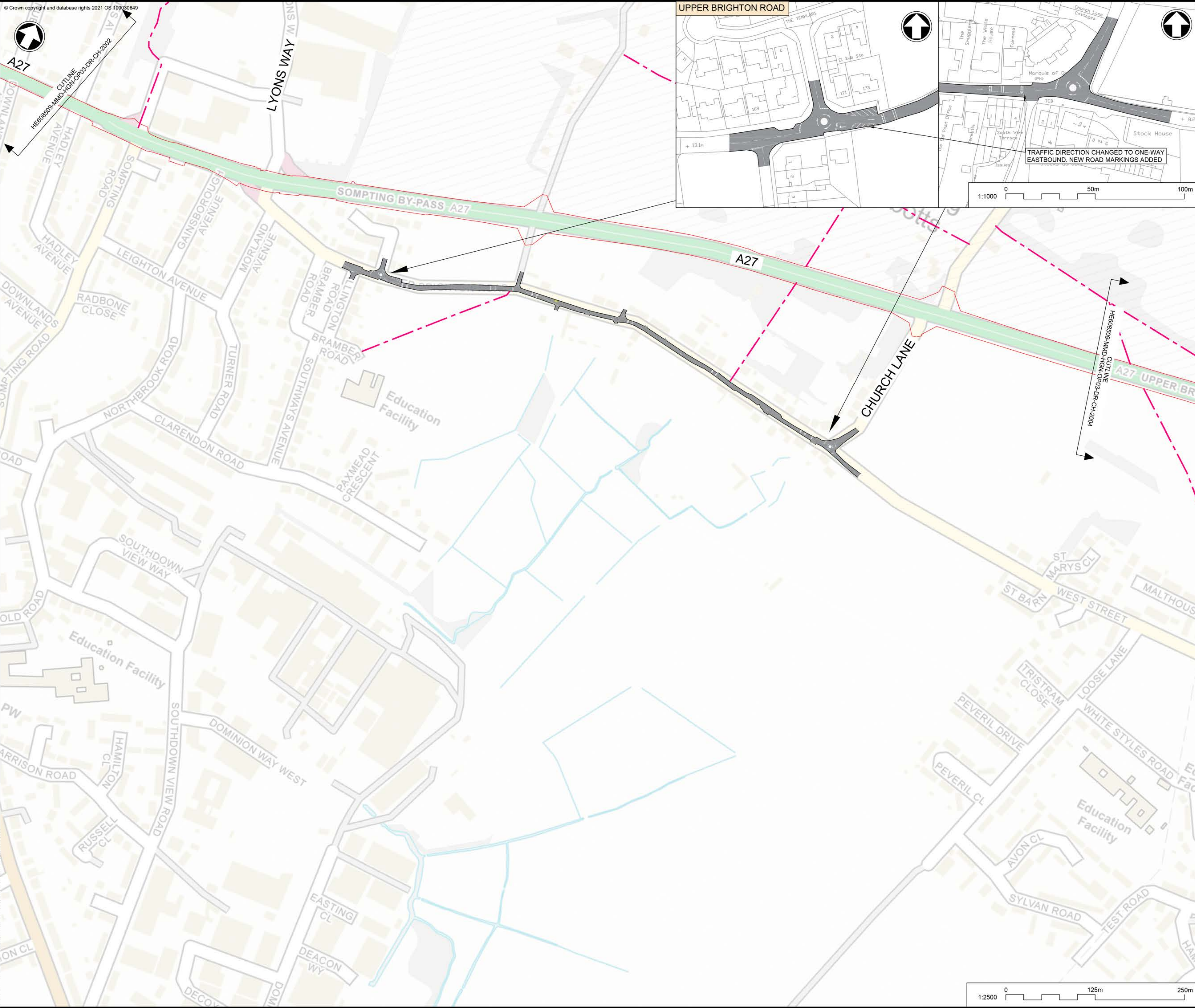
<b>INDICATIVE ENVIRONMENTAL AREA</b>	
	SOUTH DOWNS NATIONAL PARK
<b>ILLUSTRATIVE ENGINEERING ARRANGEMENTS</b>	
	ROAD SURFACE
	CENTRAL RESERVES / ISLANDS
	FOOTWAY
	SHARED USE PATH
	PROPOSED GRASSLAND
	PUBLIC RIGHTS OF WAY
	INDICATIVE NATIONAL HIGHWAYS LAND BOUNDARY
	PROPOSED TRAFFIC SIGNAL



Client  
 national highways

Project Title  
**A27 WORTHING AND LANCING**

Drawing Title  
**OPTION 3  
 A27 GROVE LODGE ROUNDABOUT  
 SHEET 2 OF 4**



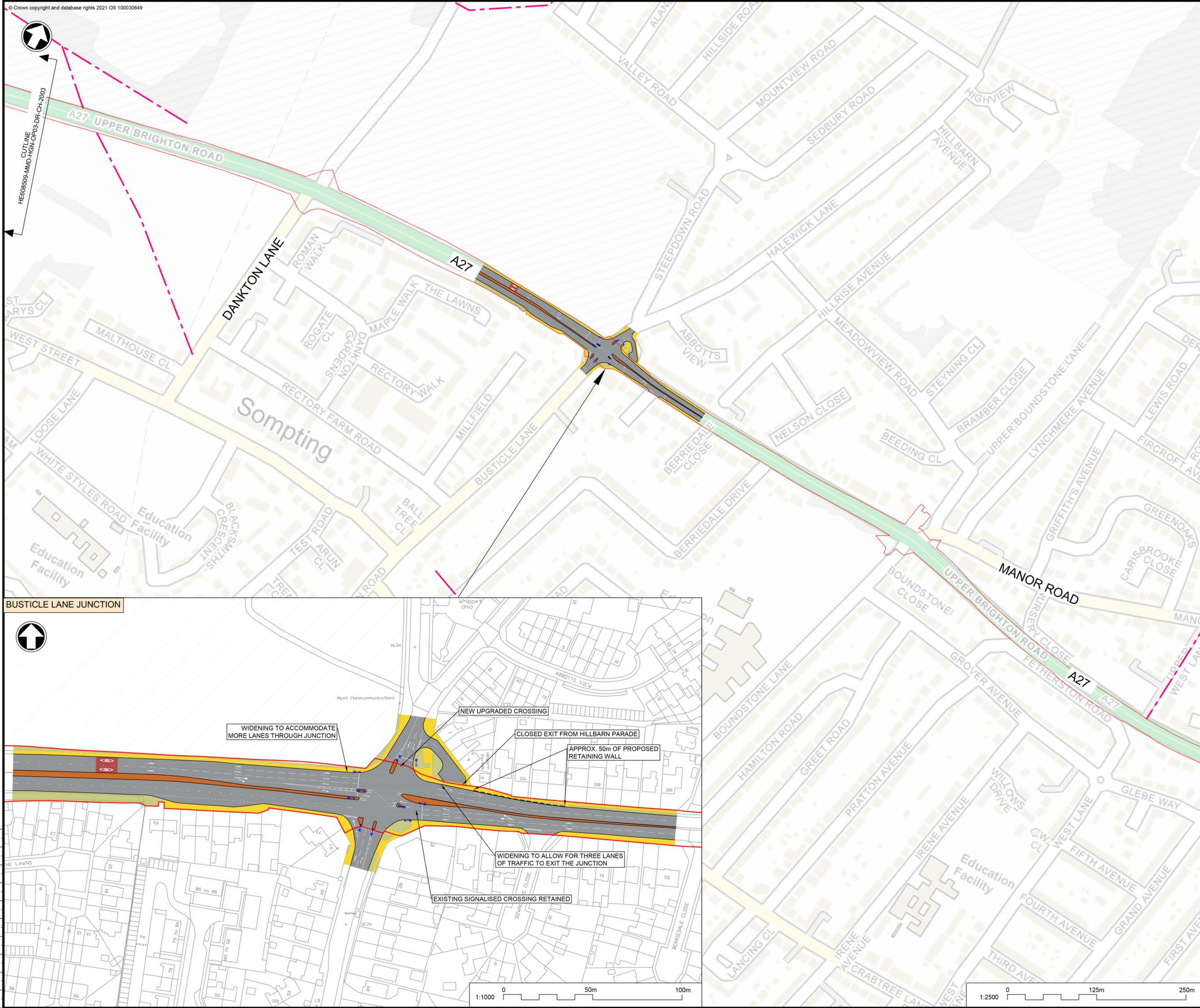
- Notes
1. PROPOSAL SHOWN ON THIS DRAWING HAVE BEEN DEVELOPED FOR PCF STAGE 1 - OPTION IDENTIFICATION AND PCF STAGE 2 - OPTION SELECTION, AND AS SUCH HAVE BEEN DONE TO A HIGH LEVEL OF DESIGN ONLY. ENGINEERING LAYOUTS ARE ILLUSTRATIVE ONLY.
  2. ADDITIONAL ENVIRONMENTAL DESIGNATIONS ARE WITHIN THE STUDY AREA BUT HAVE NOT BEEN SHOWN HERE FOR CLARITY.

- Key to symbols
- INDICATIVE ENVIRONMENTAL AREA
- SOUTH DOWNS NATIONAL PARK
- ILLUSTRATIVE ENGINEERING ARRANGEMENTS
- ROAD SURFACE
  - CENTRAL RESERVES / ISLANDS
  - FOOTWAY
  - SHARED USE PATH
  - PROPOSED GRASSLAND
  - PUBLIC RIGHTS OF WAY
  - INDICATIVE NATIONAL HIGHWAYS LAND BOUNDARY
  - PROPOSED TRAFFIC SIGNAL

Client  
 national highways

Project Title  
**A27 WORTHING AND LANCING**

Drawing Title  
 OPTION 3  
 UPPER BRIGHTON ROAD  
 SHEET 3 OF 4



- Notes
1. PROPOSAL SHOWN ON THIS DRAWING HAVE BEEN DEVELOPED FOR PCF STAGE 1 - OPTION IDENTIFICATION AND PCF STAGE 2 - OPTION SELECTION, AND AS SUCH HAVE BEEN DONE TO A HIGH LEVEL OF DESIGN ONLY. ENGINEERING LAYOUTS ARE ILLUSTRATIVE ONLY.
  2. ADDITIONAL ENVIRONMENTAL DESIGNATIONS ARE WITHIN THE STUDY AREA BUT HAVE NOT BEEN SHOWN HERE FOR CLARITY.

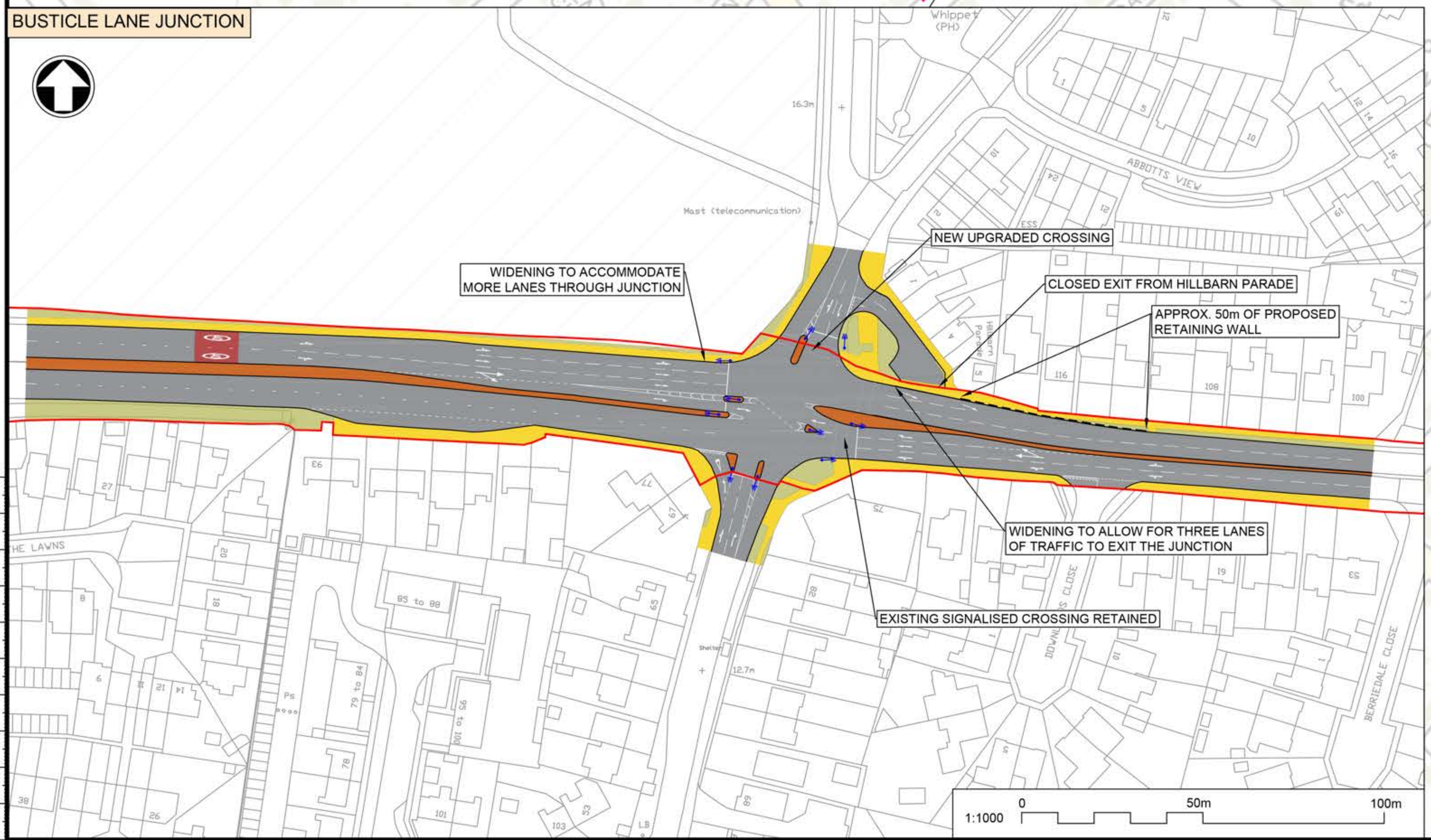
Key to symbols

INDICATIVE ENVIRONMENTAL AREA

- SOUTH DOWNS NATIONAL PARK

ILLUSTRATIVE ENGINEERING ARRANGEMENTS

- ROAD SURFACE
- CENTRAL RESERVES / ISLANDS
- FOOTWAY
- SHARED USE PATH
- PROPOSED GRASSLAND
- PUBLIC RIGHTS OF WAY
- INDICATIVE NATIONAL HIGHWAYS LAND BOUNDARY
- PROPOSED TRAFFIC SIGNAL



Client

Project Title  
**A27 WORTHING AND LANCING**

Drawing Title  
**OPTION 3  
 A27 BUSTICLE LANE JUNCTION  
 SHEET 4 OF 4**