

SAFETY, HEALTH AND ENVIRONMENTAL INFORMATION BOX

IT IS ASSUMED THAT ALL WORKS ON THIS DRAWING WILL BE CARRIED OUT BY A COMPETENT CONTRACTOR WORKING WHERE APPROPRIATE, TO AN APPROPRIATE METHOD STATEMENT.

THIS DRAWING IS TO BE USED ONLY FOR THE PURPOSE OF ISSUE THAT IT WAS ISSUED FOR AND IS SUBJECT TO AMENDMENT.

EXCEPTIONAL RISKS RELATING TO THE WORKS ASSOCIATED WITH THIS DRAWING ARE IDENTIFIED BELOW.

NOTES

- Existing
 - Retained vegetation
 - Retained Common Land
- Proposed
 - LE 1.3 Species rich grassland
 - LE 2.1 Woodland
 - LE 2.2 Woodland edge
 - LE 2.4 Linear trees and shrubs
 - LE 4.4 Hedgerow with trees
 - LE 5.1 Individual trees
- Location of construction compound
- Location of wetland enhancement areas
- Floodplain compensation storage areas
- Location of replaced ponds
- Attenuation pond
- Drainage ditch
- Earth bund
- Highway embankments - shorter line indicates top of embankment
- Very low noise surfacing *
- Noise barriers
- Replacement Common Land
- draft Order Limits

This drawing represents a preliminary design and will be subject to detailed design development in accordance with the provisions of the Development Consent Order including as a response to feedback from statutory consultation. All proposed landscape requirements (including retained vegetation, proposed replacement planting and individual trees), on and off-site ecological mitigation, flood compensation requirements and highways related features are indicative at this stage and subject to change. This drawing is provided for Statutory Consultation and inclusion within the PEI Report with the following limitations:

- Preliminary Landscape and Environmental Masterplan proposals are based on highway layout 'Design Fix 3A' and associated drainage and structural elements.
- Landscape Elements in accordance with Table 4.2b of DMRB, LD17 Landscape Design rev 0.
- *Very low noise surfacing is quieter than a Level 3 'very quiet surfacing' material as defined in Table 9/17 in the Manual of Contract documents for Highway Works.
- Greyed out areas within the Scheme are excluded from the draft Order Limits.
- For complete draft Order Limits, detailed highways, structures, drainage and Public Rights of Way proposals refer to drawing ref: GENERAL ARRANGEMENT PLAN HE551523-BAM-HGN-ZZ-DR-CH-0131.
- Do not scale from drawing.

First Issue	By	Check	Date	Suffix
	JB	SH	21/12/21	P01
For Stage Approval	JB	SH	06/01/22	P02

REVISION DETAILS

By	Check	Date	Suffix

SUITABLE FOR STAGE APPROVAL

Client: NATIONAL HIGHWAYS
Working on behalf of national highways

Project Title: **A27 Arundel Bypass**

FIGURE 2-1 (SHEET 1 OF 6)

Drawing Title: **PRELIMINARY LANDSCAPE AND ENVIRONMENTAL MASTERPLAN**

Designed: JD	Drawn: JB	Checked: JD	Approved: SH	Date: 06/01/22
Internal Project No.: 60630750	Scale: @ A1	Volume: 1:2500	Suitability: S4	Volume: Landscape

THIS DOCUMENT HAS BEEN PREPARED PURSUANT TO AND SUBJECT TO THE TERMS OF AECOM'S APPOINTMENT BY ITS CLIENT. AECOM ACCEPTS NO LIABILITY FOR ANY USE OF THIS DOCUMENT OTHER THAN BY ITS ORIGINAL CLIENT OR FOLLOWING AECOM'S EXPRESS AGREEMENT TO SUCH USE, AND ONLY FOR THE PURPOSES FOR WHICH IT WAS PREPARED AND PROVIDED.



BAM Nuttall Limited
St James House
Knox Road
Camberley
GU15 3XW
www.bamnuttall.co.uk

AECOM
Unit 216
Bodford Heights
Brickhill Drive
Tel: +44 1234 349 641
www.aecom.com

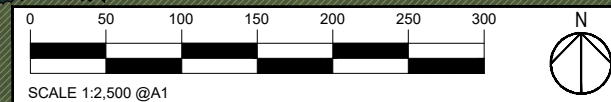
Drawing Number: HE551523	Originator: -BAM-	Volume: -ELS-	Rev: P02
Location: ZZ	Type: -DR-LD-	Number: 0001	

NOTE:

©Crown copyright 2021 [and database rights] OS 100030649 . You are granted anon-exclusive, royalty free, revocable licence solely to view the Licensed Data for non-commercial purposes for the period during which Highways England makes it available. You are not permitted to copy, sub-licence, distribute, sell or otherwise make available the Licensed Data to third parties in any form. Third party rights to enforce the terms of this licence shall be reserved to OS.

©Bluesky International Limited.

File Name: C:\WORK\KING\GEN\ZZ_ZZ_ZZ\A27\GEN\ZZ_ZZ_ZZ\A27\ZZ-001
 Plot Date: 18 January 2022 09:49:42
 File Name: C:\WORK\KING\GEN\ZZ_ZZ_ZZ\A27\GEN\ZZ_ZZ_ZZ\A27\ZZ-001



SAFETY, HEALTH AND ENVIRONMENTAL INFORMATION BOX

IT IS ASSUMED THAT ALL WORKS ON THIS DRAWING WILL BE CARRIED OUT BY A COMPETENT CONTRACTOR WORKING WHERE APPROPRIATE, TO AN APPROPRIATE METHOD STATEMENT. THIS DRAWING IS TO BE USED ONLY FOR THE PURPOSE OF ISSUE THAT IT WAS ISSUED FOR AND IS SUBJECT TO AMENDMENT.

EXCEPTIONAL RISKS RELATING TO THE WORKS ASSOCIATED WITH THIS DRAWING ARE IDENTIFIED BELOW.

NOTES

- Existing
 - Retained vegetation
 - Retained Common Land
- Proposed
 - LE 1.3 Species rich grassland
 - LE 2.1 Woodland
 - LE 2.2 Woodland edge
 - LE 2.4 Linear trees and shrubs
 - LE 4.4 Hedgerow with trees
 - LE 5.1 Individual trees
- Location of construction compound
- Location of wetland enhancement areas
- Floodplain compensation storage areas
- Location of replaced ponds
- Attenuation pond
- Drainage ditch
- Earth bund
- Highway embankments - shorter line indicates top of embankment
- Very low noise surfacing *
- Noise barriers
- Replacement Common Land
- draft Order Limits

This drawing represents a preliminary design and will be subject to detailed design development in accordance with the provisions of the Development Consent Order including as a response to feedback from statutory consultation. All proposed landscape requirements (including retained vegetation, proposed replacement planting and individual trees), on and off-site ecological mitigation, flood compensation requirements and highways related features are indicative at this stage and subject to change. This drawing is provided for Statutory Consultation and inclusion within the PEI Report with the following limitations:

- Preliminary Landscape and Environmental Masterplan proposals are based on highway layout 'Design Fix 3A' and associated drainage and structural elements.
- Landscape Elements in accordance with Table 4.2b of DMRB, LD17 Landscape Design rev 0.
- *Very low noise surfacing is quieter than a Level 3 'very quiet surfacing' material as defined in Table 9/17 in the Manual of Contract documents for Highway Works.
- Greyed out areas within the Scheme are excluded from the draft Order Limits.
- For complete draft Order Limits, detailed highways, structures, drainage and Public Rights of Way proposals refer to drawing ref: GENERAL ARRANGEMENT PLAN HE551523-BAM-HGN-ZZ-DR-CH-0131.
- Do not scale from drawing.

REVISION DETAILS	By	Check	Date	Suffix
First Issue	JB	SH	21/12/21	P01
For Stage Approval	JB	SH	06/01/22	P02

SUITABLE FOR STAGE APPROVAL

Client
NATIONAL HIGHWAYS
Working on behalf of
national highways

Project Title
A27 Arundel Bypass

FIGURE 2-1 (SHEET 2 OF 6)

PRELIMINARY LANDSCAPE AND ENVIRONMENTAL MASTERPLAN

Designed JD	Drawn JJB	Checked JD	Approved SH	Date 06/01/22
Internal Project No. 60630750	Scale @ A1 1:2500	Suitability S4	Volume Landscape	

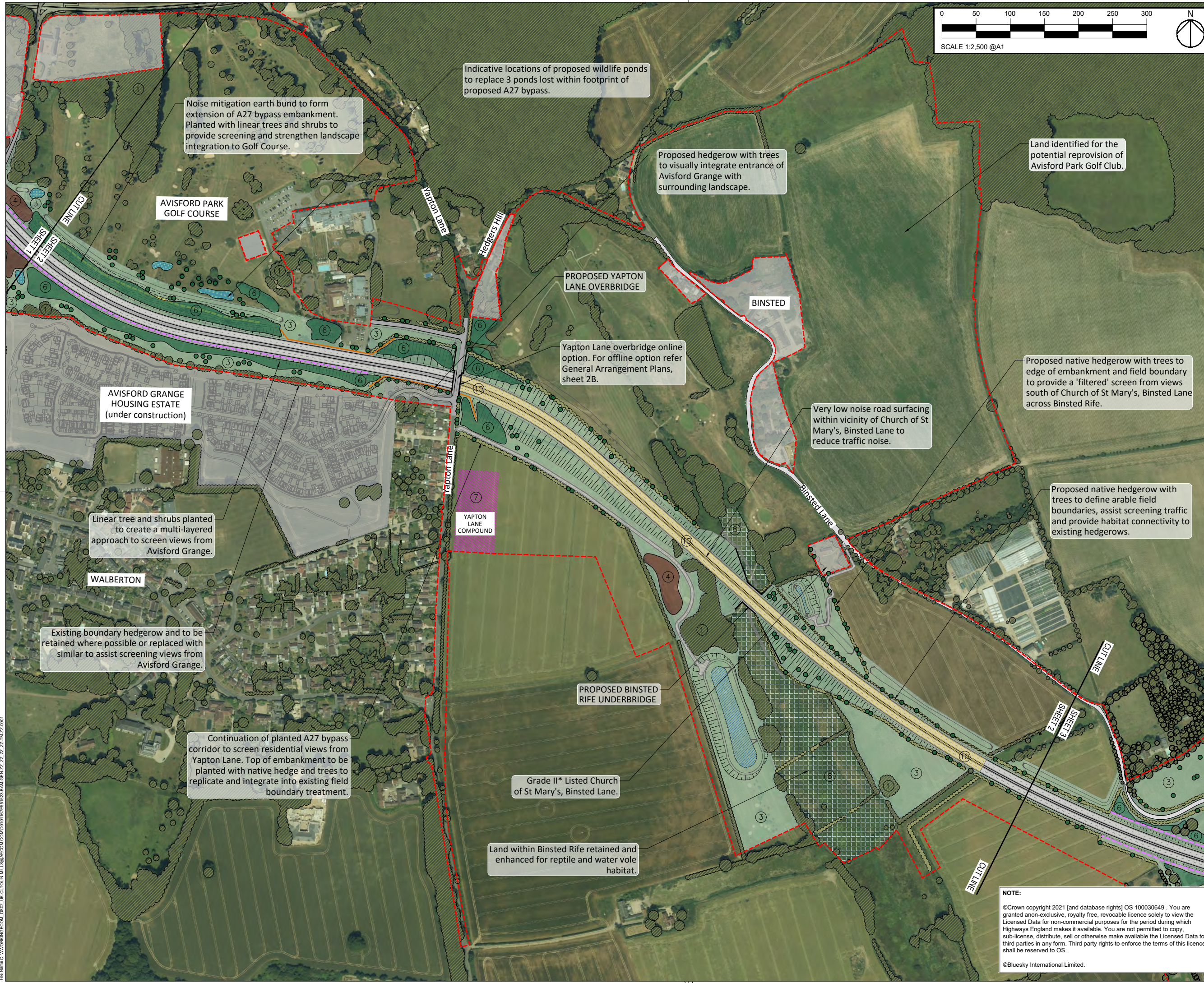
THIS DOCUMENT HAS BEEN PREPARED PURSUANT TO AND SUBJECT TO THE TERMS OF AECOM'S APPOINTMENT BY ITS CLIENT. AECOM ACCEPTS NO LIABILITY FOR ANY USE OF THIS DOCUMENT OTHER THAN BY ITS ORIGINAL CLIENT OR FOLLOWING AECOM'S EXPRESS AGREEMENT TO SUCH USE, AND ONLY FOR THE PURPOSES FOR WHICH IT WAS PREPARED AND PROVIDED.



BAM Nuttall Limited
St James House
Knox Road
Camberley
GU15 3XW
www.bamnuttall.co.uk

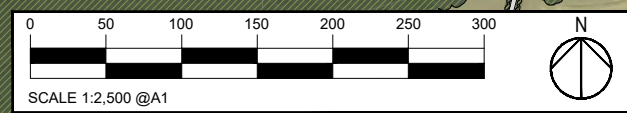
AECOM
Unit 216
Badford Heights
Brickhill Drive
Tel: +44 1234 349 641
www.aecom.com

Drawing Number HE551523 -BAM	Originator -ELS	Volume -DR-LD-0002	Rev P02
Location	Type	Role	Number



NOTE:
©Crown copyright 2021 [and database rights] OS 100030649. You are granted anon-exclusive, royalty free, revocable licence solely to view the Licensed Data for non-commercial purposes for the period during which Highways England makes it available. You are not permitted to copy, sub-license, distribute, sell or otherwise make available the Licensed Data to third parties in any form. Third party rights to enforce the terms of this licence shall be reserved to OS.
©Bluesky International Limited.

File Name: C:\WORK\BAM\GEN-ZZ-ZZ-ZZ\TAZZ-001
 Plot Date: 18 January 2022 15:03:12
 File Name: C:\WORK\BAM\GEN-ZZ-ZZ-ZZ\TAZZ-001



SAFETY, HEALTH AND ENVIRONMENTAL INFORMATION BOX

IT IS ASSUMED THAT ALL WORKS ON THIS DRAWING WILL BE CARRIED OUT BY A COMPETENT CONTRACTOR WORKING WHERE APPROPRIATE, TO AN APPROPRIATE METHOD STATEMENT.
THIS DRAWING IS TO BE USED ONLY FOR THE PURPOSE OF ISSUE THAT IT WAS ISSUED FOR AND IS SUBJECT TO AMENDMENT.
EXCEPTIONAL RISKS RELATING TO THE WORKS ASSOCIATED WITH THIS DRAWING ARE IDENTIFIED BELOW.

- NOTES**
- Existing
 - Retained vegetation
 - Retained Common Land
 - Proposed
 - LE 1.3 Species rich grassland
 - LE 2.1 Woodland
 - LE 2.2 Woodland edge
 - LE 2.4 Linear trees and shrubs
 - LE 4.4 Hedgerow with trees
 - LE 5.1 Individual trees
 - Location of construction compound
 - Location of wetland enhancement areas
 - Floodplain compensation storage areas
 - Location of replaced ponds
 - Attenuation pond
 - Drainage ditch
 - Earth bund
 - Highway embankments - shorter line indicates top of embankment
 - Very low noise surfacing *
 - Noise barriers
 - Replacement Common Land
 - draft Order Limits

This drawing represents a preliminary design and will be subject to detailed design development in accordance with the provisions of the Development Consent Order including as a response to feedback from statutory consultation. All proposed landscape requirements (including retained vegetation, proposed replacement planting and individual trees), on and off-site ecological mitigation, flood compensation requirements and highways related features are indicative at this stage and subject to change. This drawing is provided for Statutory Consultation and inclusion within the PEI Report with the following limitations:

- Preliminary Landscape and Environmental Masterplan proposals are based on highway layout 'Design Fix 3A' and associated drainage and structural elements.
- Landscape Elements in accordance with Table 4.2b of DMRB, LD17 Landscape Design rev 0.
- *Very low noise surfacing is quieter than a Level 3 'very quiet surfacing' material as defined in Table 9/17 in the Manual of Contract documents for Highway Works.
- Greyed out areas within the Scheme are excluded from the draft Order Limits.
- For complete draft Order Limits, detailed highways, structures, drainage and Public Rights of Way proposals refer to drawing ref: GENERAL ARRANGEMENT PLAN HE551523-BAM-HGN-ZZ-DR-CH-0131.
- Do not scale from drawing.

First Issue	JB SH	21/12/21	P01
For Stage Approval	JB SH	06/01/22	P02
REVISION DETAILS			
Purpose of issue	By	Check	Date

SUITABLE FOR STAGE APPROVAL

Client
NATIONAL HIGHWAYS
Working on behalf of
national highways
1 Walnut Tree Close
Guildford
Surrey

Project Title
A27 Arundel Bypass

Figure Title
FIGURE 2-1 (SHEET 3 OF 6)

Drawing Title
PRELIMINARY LANDSCAPE AND ENVIRONMENTAL MASTERPLAN

Designed JD	Drawn JB	Checked JD	Approved SH	Date 06/01/22
Internal Project No. 60630750	Suitability S4	Volume Landscape		

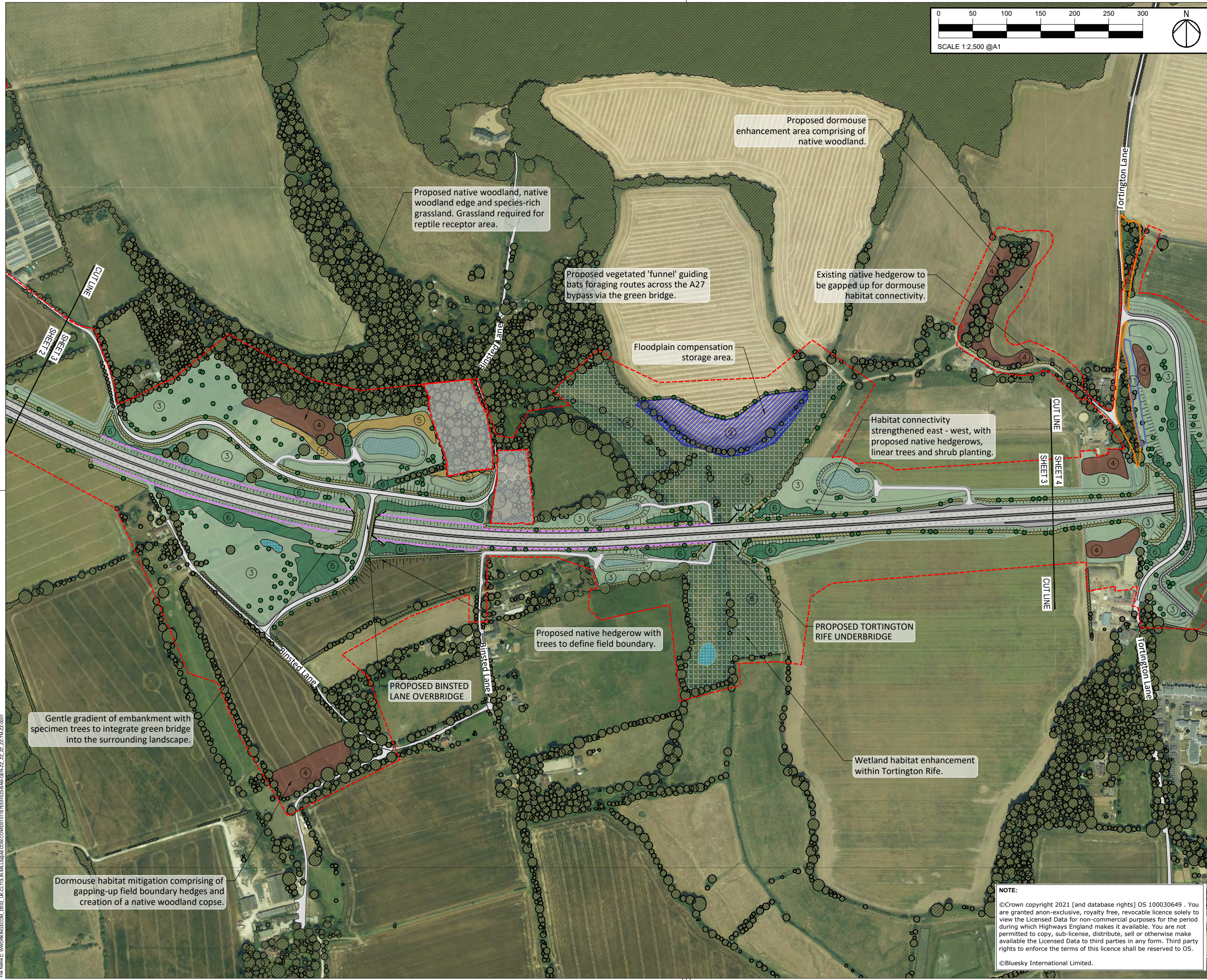
THIS DOCUMENT HAS BEEN PREPARED PURSUANT TO AND SUBJECT TO THE TERMS OF AECOM'S APPOINTMENT BY ITS CLIENT. AECOM ACCEPTS NO LIABILITY FOR ANY USE OF THIS DOCUMENT OTHER THAN BY ITS ORIGINAL CLIENT OR FOLLOWING AECOM'S EXPRESS AGREEMENT TO SUCH USE, AND ONLY FOR THE PURPOSES FOR WHICH IT WAS PREPARED AND PROVIDED.



BAM Nuttall Limited
St James House
Knox Road
Camberley
GU15 3XW
www.bamnuttall.co.uk

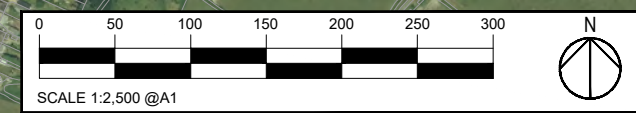
AECOM
Unit 216
Bastford Heights
Brickhill Drive
Tel: +44 1234 349 641
www.aecom.com

Drawing Number HE551523 -BAM	Originator -ELS -	Volume ZZ	Rev P02
Location ZZ	Type -DR-LD-0003	Role ZZ	Number ZZ



NOTE:
©Crown copyright 2021 [and database rights] OS 100030649 . You are granted anon-exclusive, royalty free, revocable licence solely to view the Licensed Data for non-commercial purposes for the period during which Highways England makes it available. You are not permitted to copy, sub-license, distribute, sell or otherwise make available the Licensed Data to third parties in any form. Third party rights to enforce the terms of this licence shall be reserved to OS.
©Bluesky International Limited.

File Name: C:\WORK\KING\GEN\COM_DBS\02_LK-CLT\IN\MLS@AECOM.COM\01011916551523-BAM-GEN-ZZ-ZZ-ZZ-TA-ZZ-001
 Plot Date: 05 January 2022 15:00:05



SAFETY, HEALTH AND ENVIRONMENTAL INFORMATION BOX

IT IS ASSUMED THAT ALL WORKS ON THIS DRAWING WILL BE CARRIED OUT BY A COMPETENT CONTRACTOR WORKING WHERE APPROPRIATE, TO AN APPROPRIATE METHOD STATEMENT.
THIS DRAWING IS TO BE USED ONLY FOR THE PURPOSE OF ISSUE THAT IT WAS ISSUED FOR AND IS SUBJECT TO AMENDMENT.
EXCEPTIONAL RISKS RELATING TO THE WORKS ASSOCIATED WITH THIS DRAWING ARE IDENTIFIED BELOW.

NOTES

- Existing**
 - Retained vegetation
 - Retained Common Land
- Proposed**
 - LE 1.3 Species rich grassland
 - LE 2.1 Woodland
 - LE 2.2 Woodland edge
 - LE 2.4 Linear trees and shrubs
 - LE 4.4 Hedgerow with trees
 - LE 5.1 Individual trees
- Location of construction compound
- Location of wetland enhancement areas
- Floodplain compensation storage areas
- Location of replaced ponds
- Attenuation pond
- Drainage ditch
- Earth bund
- Highway embankments - shorter line indicates top of embankment
- Very low noise surfacing *
- Noise barriers
- Replacement Common Land
- draft Order Limits

This drawing represents a preliminary design and will be subject to detailed design development in accordance with the provisions of the Development Consent Order including as a response to feedback from statutory consultation. All proposed landscape requirements (including retained vegetation, proposed replacement planting and individual trees), on and off-site ecological mitigation, flood compensation requirements and highways related features are indicative at this stage and subject to change. This drawing is provided for Statutory Consultation and inclusion within the PEI Report with the following limitations:

- Preliminary Landscape and Environmental Masterplan proposals are based on highway layout 'Design Fix 3A' and associated drainage and structural elements.
- Landscape Elements in accordance with Table 4.2b of DMRB, LD17 Landscape Design rev 0.
- *Very low noise surfacing is quieter than a Level 3 'very quiet surfacing' material as defined in Table 9'17 in the Manual of Contract documents for Highway Works.
- Greyed out areas within the Scheme are excluded from the draft Order Limits.
- For complete draft Order Limits, detailed highways, structures, drainage and Public Rights of Way proposals refer to drawing ref: GENERAL ARRANGEMENT PLAN HE551523-BAM-HGN-ZZ-DR-CH-0131.
- Do not scale from drawing.

First Issue	JB SH	21/12/21	P01
For Stage Approval	JB SH	06/01/22	P02
REVISION DETAILS			
By	Check	Date	Suffix

Purpose of issue
SUITABLE FOR STAGE APPROVAL

Client
NATIONAL HIGHWAYS
Working on behalf of
national highways

Project Title
A27 Arundel Bypass

FIGURE 2-1 (SHEET 4 OF 6)

PRELIMINARY LANDSCAPE AND ENVIRONMENTAL MASTERPLAN

Designed JD	Drawn JB	Checked JD	Approved SH	Date 06/01/22
Internal Project No. 60630750	Suitability S4			
Scale @ A1 1:2500	Volume Landscape			

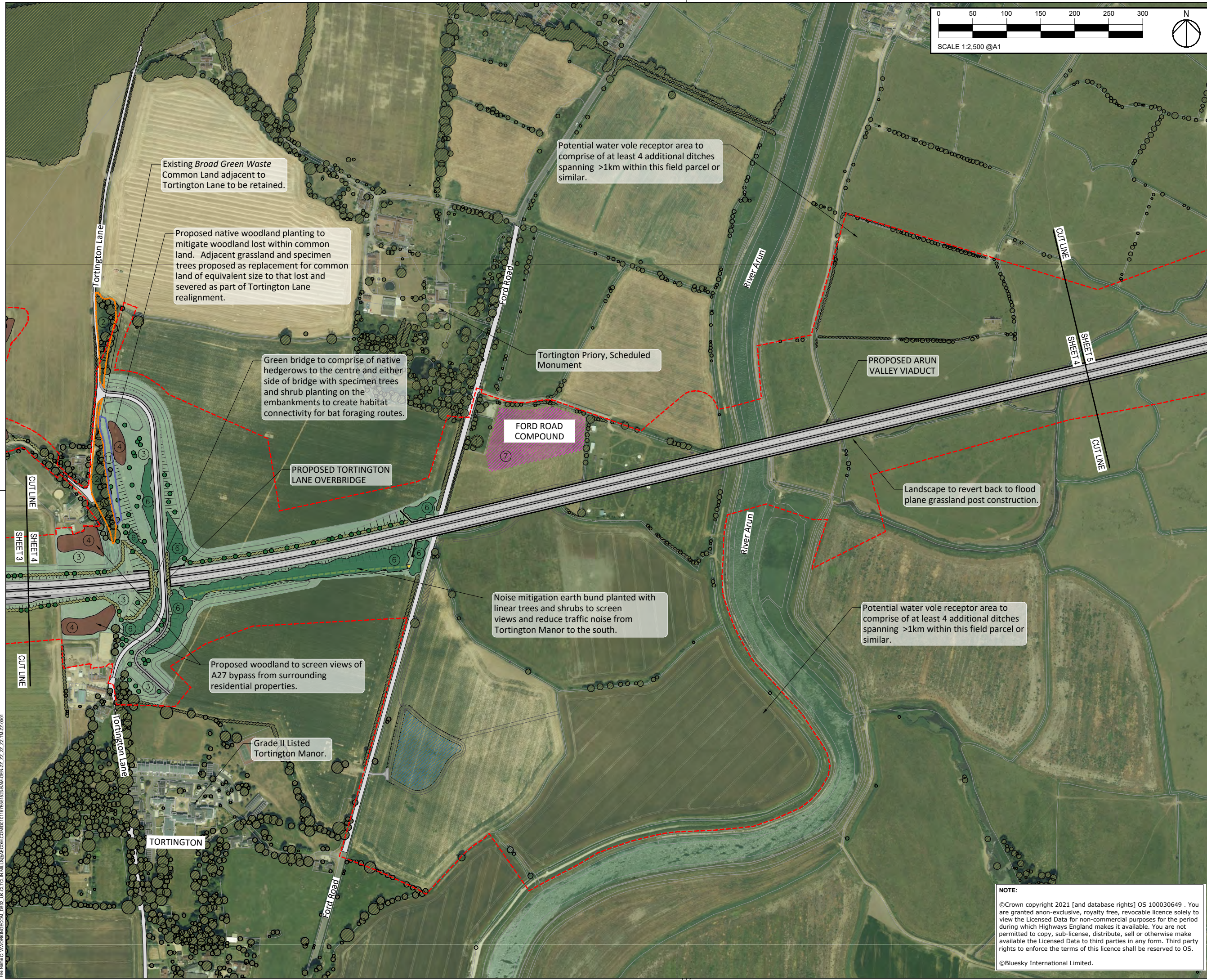
THIS DOCUMENT HAS BEEN PREPARED PURSUANT TO AND SUBJECT TO THE TERMS OF AECOM'S APPOINTMENT BY ITS CLIENT. AECOM ACCEPTS NO LIABILITY FOR ANY USE OF THIS DOCUMENT OTHER THAN BY ITS ORIGINAL CLIENT OR FOLLOWING AECOM'S EXPRESS AGREEMENT TO SUCH USE, AND ONLY FOR THE PURPOSES FOR WHICH IT WAS PREPARED AND PROVIDED.



BAM Nuttall Limited
St James House
Knox Road
Camberley
GU15 3XW
www.bamnuttall.co.uk

AECOM
Unit 216
Bedford Heights
Brickhill Drive
Tel: +44 1234 349 641
www.aecom.com

Drawing Number HE551523 -BAM -ELS - ZZ	Originator -BAM -DR-LD-0004	Volume 1	Rev P02
Location	Type	Role	Number



Existing *Broad Green* Waste Common Land adjacent to Tortington Lane to be retained.

Proposed native woodland planting to mitigate woodland lost within common land. Adjacent grassland and specimen trees proposed as replacement for common land of equivalent size to that lost and severed as part of Tortington Lane realignment.

Green bridge to comprise of native hedgerows to the centre and either side of bridge with specimen trees and shrub planting on the embankments to create habitat connectivity for bat foraging routes.

PROPOSED TORTINGTON LANE OVERBRIDGE

FORD ROAD COMPOUND

Noise mitigation earth bund planted with linear trees and shrubs to screen views and reduce traffic noise from Tortington Manor to the south.

Proposed woodland to screen views of A27 bypass from surrounding residential properties.

Grade II Listed Tortington Manor.

Potential water vole receptor area to comprise of at least 4 additional ditches spanning >1km within this field parcel or similar.

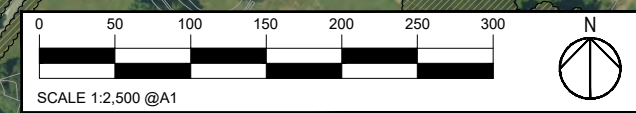
PROPOSED ARUN VALLEY VIADUCT

Landscape to revert back to flood plane grassland post construction.

Potential water vole receptor area to comprise of at least 4 additional ditches spanning >1km within this field parcel or similar.

NOTE:
©Crown copyright 2021 [and database rights] OS 100030649 . You are granted anon-exclusive, royalty free, revocable licence solely to view the Licensed Data for non-commercial purposes for the period during which Highways England makes it available. You are not permitted to copy, sub-license, distribute, sell or otherwise make available the Licensed Data to third parties in any form. Third party rights to enforce the terms of this licence shall be reserved to OS.
©Bluesky International Limited.

File Name: C:\WORKSPACE\GEN-ZZ-ZZ-ZZ-TORTINGTON\GEN-ZZ-ZZ-ZZ-TORTINGTON.dwg
 Plot Date: 06 January 2022 10:11:11
 File Name: C:\WORKSPACE\GEN-ZZ-ZZ-ZZ-TORTINGTON\GEN-ZZ-ZZ-ZZ-TORTINGTON.dwg



SAFETY, HEALTH AND ENVIRONMENTAL INFORMATION BOX

IT IS ASSUMED THAT ALL WORKS ON THIS DRAWING WILL BE CARRIED OUT BY A COMPETENT CONTRACTOR WORKING WHERE APPROPRIATE, TO AN APPROPRIATE METHOD STATEMENT.
THIS DRAWING IS TO BE USED ONLY FOR THE PURPOSE OF ISSUE THAT IT WAS ISSUED FOR AND IS SUBJECT TO AMENDMENT.
EXCEPTIONAL RISKS RELATING TO THE WORKS ASSOCIATED WITH THIS DRAWING ARE IDENTIFIED BELOW.

- NOTES**
- Existing
 - Retained vegetation
 - Retained Common Land
 - Proposed
 - LE 1.3 Species rich grassland
 - LE 2.1 Woodland
 - LE 2.2 Woodland edge
 - LE 2.4 Linear trees and shrubs
 - LE 4.4 Hedgerow with trees
 - LE 5.1 Individual trees
 - Location of construction compound
 - Location of wetland enhancement areas
 - Floodplain compensation storage areas
 - Location of replaced ponds
 - Attenuation pond
 - Drainage ditch
 - Earth bund
 - Highway embankments - shorter line indicates top of embankment
 - Very low noise surfacing *
 - Noise barriers
 - Replacement Common Land
 - draft Order Limits

This drawing represents a preliminary design and will be subject to detailed design development in accordance with the provisions of the Development Consent Order including as a response to feedback from statutory consultation. All proposed landscape requirements (including retained vegetation, proposed replacement planting and individual trees), on and off-site ecological mitigation, flood compensation requirements and highways related features are indicative at this stage and subject to change. This drawing is provided for Statutory Consultation and inclusion within the PEI Report with the following limitations:

- Preliminary Landscape and Environmental Masterplan proposals are based on highway layout 'Design Fix 3A' and associated drainage and structural elements.
- Landscape Elements in accordance with Table 4.2b of DMRB, LD117 Landscape Design rev 0.
- *Very low noise surfacing is quieter than a Level 3 'very quiet surfacing' material as defined in Table 9/17 in the Manual of Contract documents for Highway Works.
- Greyed out areas within the Scheme are excluded from the draft Order Limits.
- For complete draft Order Limits, detailed highways, structures, drainage and Public Rights of Way proposals refer to drawing ref: GENERAL ARRANGEMENT PLAN HE551523-BAM-HGN-ZZ-DR-CH-0131.
- Do not scale from drawing.

Issue	By	Date	Suffix
First Issue	JB SH	21/12/21	P01
For Stage Approval	JB SH	06/01/22	P02

REVISION DETAILS

Purpose of issue
SUITABLE FOR STAGE APPROVAL

Client
NATIONAL HIGHWAYS
Working on behalf of
Bridge House
1 Walnut Tree Close
Guildford
Surrey

Project Title
A27 Arundel Bypass

FIGURE 2-1 (SHEET 5 OF 6)

PRELIMINARY LANDSCAPE AND ENVIRONMENTAL MASTERPLAN

Designed JD	Drawn JB	Checked JD	Approved SH	Date 06/01/22
Internal Project No. 60630750	Suitability S4			
Scale @ A1 1:2500	Volume Landscape			

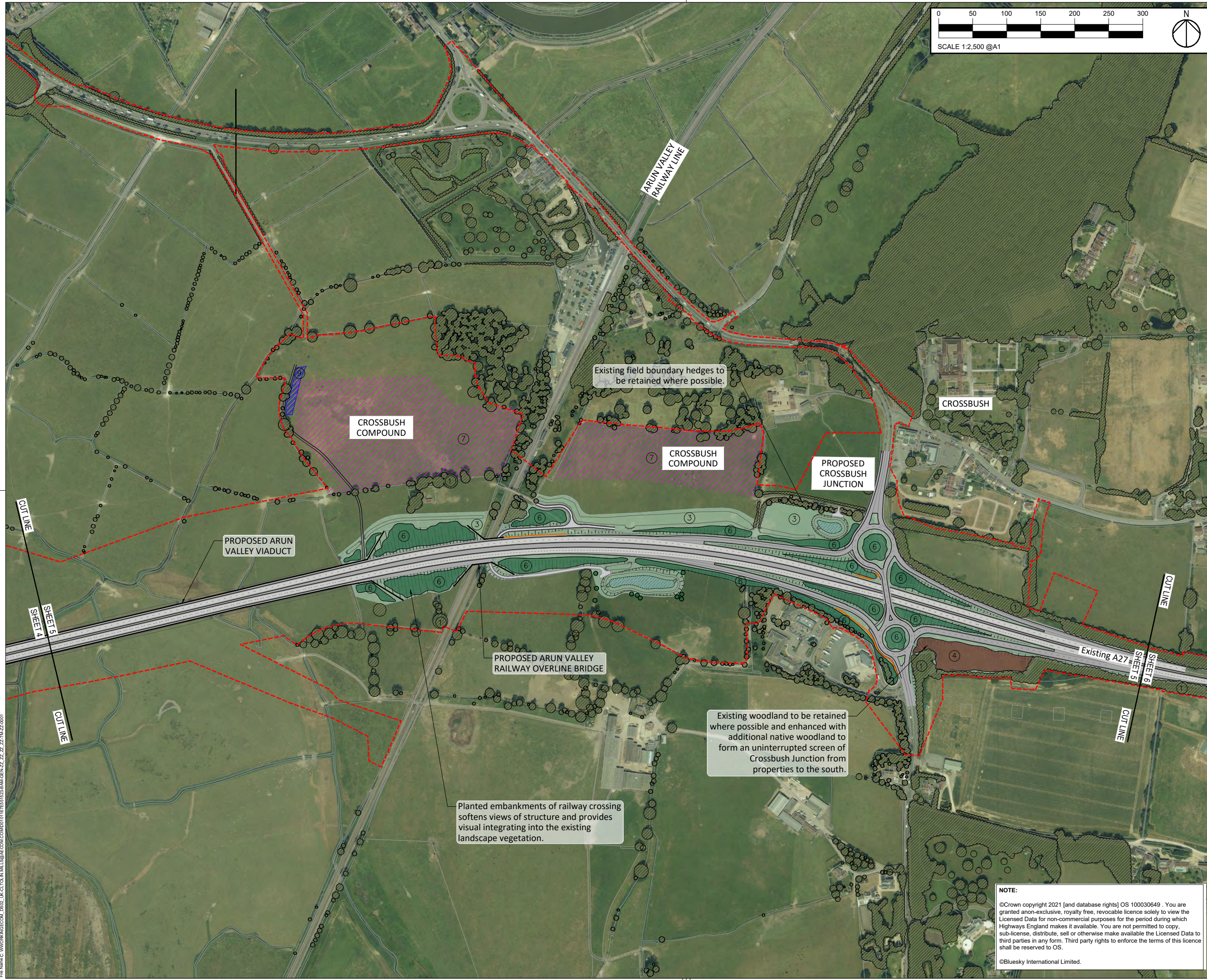
THIS DOCUMENT HAS BEEN PREPARED PURSUANT TO AND SUBJECT TO THE TERMS OF AECOM'S APPOINTMENT BY ITS CLIENT. AECOM ACCEPTS NO LIABILITY FOR ANY USE OF THIS DOCUMENT OTHER THAN BY ITS ORIGINAL CLIENT OR FOLLOWING AECOM'S EXPRESS AGREEMENT TO SUCH USE, AND ONLY FOR THE PURPOSES FOR WHICH IT WAS PREPARED AND PROVIDED.



BAM Nuttall Limited
St James House
Knox Road
Camberley
GU15 3XW
www.bamnuttall.co.uk

AECOM
Unit 216
Badford Heights
Brickhill Drive
Tel: +44 1234 349 641
www.aecom.com

Drawing Number HE551523 -BAM -ELS -ZZ	Originator -BAM -ELS -ZZ	Volume -DR-LD-0005	Rev P02
Location	Type	Role	Number

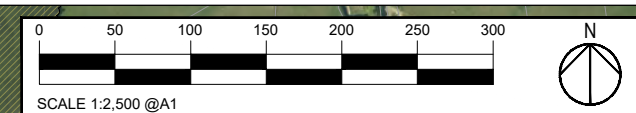
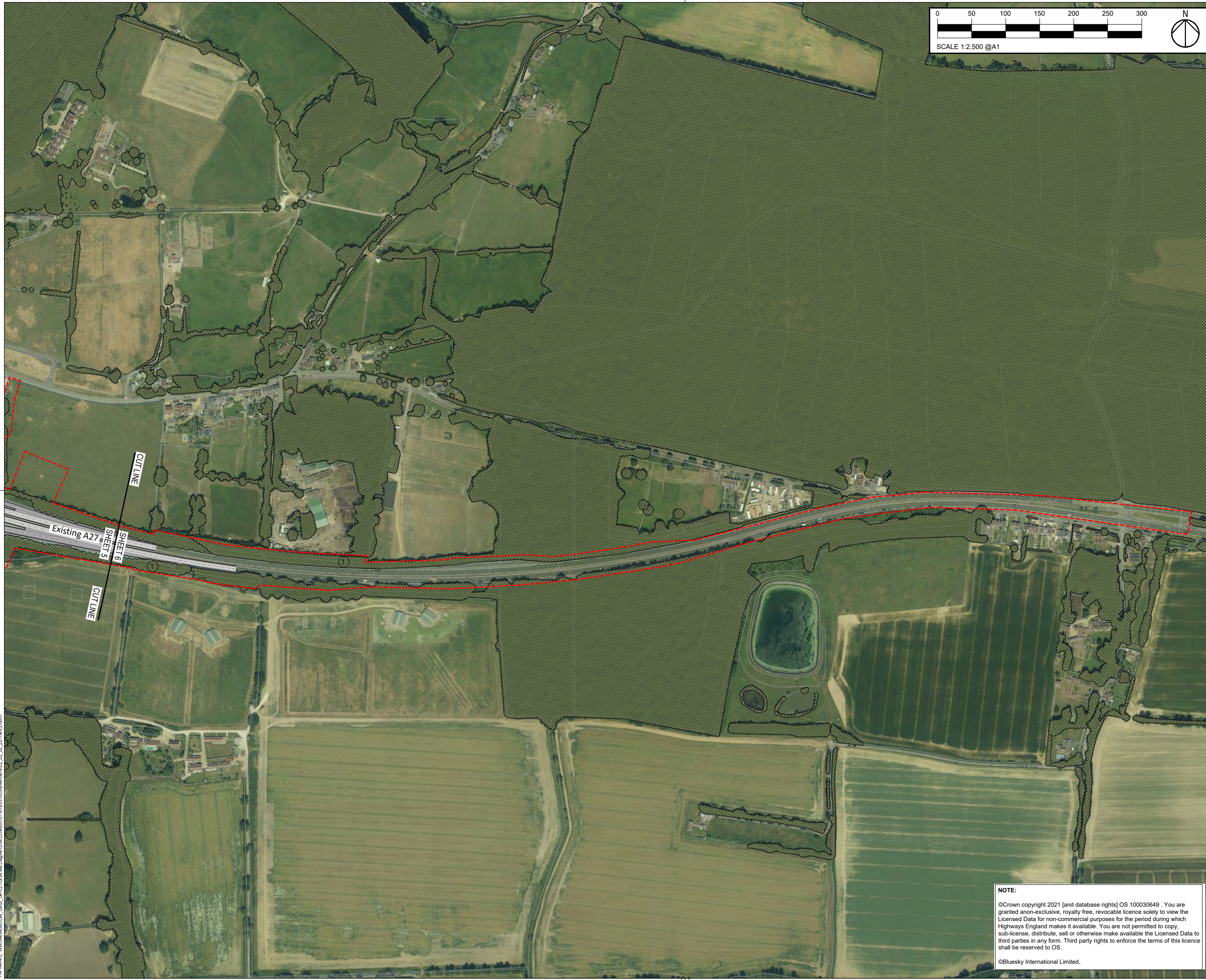


File Name: C:\WORK\LINKCONNEX\HE551523-BAM-GEN-ZZ-ZZ-DR-LD-0005
 File Name: C:\WORK\LINKCONNEX\HE551523-BAM-GEN-ZZ-ZZ-DR-LD-0005

NOTE:

©Crown copyright 2021 [and database rights] OS 100030649. You are granted an non-exclusive, royalty free, revocable licence solely to view the Licensed Data for non-commercial purposes for the period during which Highways England makes it available. You are not permitted to copy, sub-license, distribute, sell or otherwise make available the Licensed Data to third parties in any form. Third party rights to enforce the terms of this licence shall be reserved to OS.

©Bluesky International Limited.



SAFETY, HEALTH AND ENVIRONMENTAL INFORMATION BOX

IT IS ASSUMED THAT ALL WORKS ON THIS DRAWING WILL BE CARRIED OUT BY A COMPETENT CONTRACTOR WORKING WHERE APPROPRIATE, TO AN APPROPRIATE METHOD STATEMENT.

THIS DRAWING IS TO BE USED ONLY FOR THE PURPOSE OF ISSUE THAT IT WAS ISSUED FOR AND IS SUBJECT TO AMENDMENT.

EXCEPTIONAL RISKS RELATING TO THE WORKS ASSOCIATED WITH THIS DRAWING ARE IDENTIFIED BELOW.

NOTES

Existing

- Retained vegetation
- Retained Common Land

Proposed

- LE 1.3 Species rich grassland
- LE 2.1 Woodland
- LE 2.2 Woodland edge
- LE 2.4 Linear trees and shrubs
- LE 4.4 Hedgerow with trees
- LE 5.1 Individual trees
- Location of construction compound
- Location of wetland enhancement areas
- Floodplain compensation storage areas
- Location of replaced ponds
- Attenuation pond
- Drainage ditch
- Earth bund
- Highway embankments - shorter line indicates top of embankment
- Very low noise surfacing *
- Noise barriers
- Replacement Common Land
- draft Order Limits

This drawing represents a preliminary design and will be subject to detailed design development in accordance with the provisions of the Development Consent Order including as a response to feedback from statutory consultation. All proposed landscape requirements (including retained vegetation, proposed replacement planting and individual trees), on and off-site ecological mitigation, flood compensation requirements and highways related features are indicative at this stage and subject to change. This drawing is provided for Statutory Consultation and inclusion within the PEI Report with the following limitations:

- Preliminary Landscape and Environmental Masterplan proposals are based on highway layout 'Design Fix 3A' and associated drainage and structural elements.
- Landscape Elements in accordance with Table 4.2b of DMRB, LD117 Landscape Design rev 0.
- *Very low noise surfacing is quieter than a Level 3 'very quiet surfacing' material as defined in Table 9/17 in the Manual of Contract documents for Highway Works.
- Greyed out areas within the Scheme are excluded from the draft Order Limits.
- For complete draft Order Limits, detailed highways, structures, drainage and Public Rights of Way proposals refer to drawing ref: GENERAL ARRANGEMENT PLAN HE551523-BAM-HGN-ZZ-DR-CH-0131.
- Do not scale from drawing.

First Issue	JB SH	21/12/21	P01
For Stage Approval	JB SH	06/01/22	P02
REVISION DETAILS			
	By	Check	Date
			Suffix

SUITABLE FOR STAGE APPROVAL

Client
NATIONAL HIGHWAYS Working on behalf of
 Bridge House
 1 Walnut Tree Close
 Guildford
 Surrey

Project Title
A27 Arundel Bypass

FIGURE 2-1 (SHEET 6 OF 6)

Drawing Title
PRELIMINARY LANDSCAPE AND ENVIRONMENTAL MASTERPLAN

Designed JD	Drawn JB	Checked JD	Approved SH	Date 06/01/22
Internal Project No. 60630750	Suitability S4			
Scale @ A1 1:2500	Volume Landscape			

THIS DOCUMENT HAS BEEN PREPARED PURSUANT TO AND SUBJECT TO THE TERMS OF AECOM'S APPOINTMENT BY ITS CLIENT. AECOM ACCEPTS NO LIABILITY FOR ANY USE OF THIS DOCUMENT OTHER THAN BY ITS ORIGINAL CLIENT OR FOLLOWING AECOM'S EXPRESS AGREEMENT TO SUCH USE, AND ONLY FOR THE PURPOSES FOR WHICH IT WAS PREPARED AND PROVIDED.



BAM Nuttall Limited
 St James House
 Knoll Road
 Camberley
 GU15 3XW
 www.bamnuttall.co.uk

AECOM
 Unit 216
 Bedford Heights
 Brickhill Drive
 Tel: +44 1234 349 641
 www.aecom.com

Drawing Number HE551523 -BAM	Originator -ELS -	Volume ZZ	Rev P02
Location	Type	Role	Number

NOTE:

©Crown copyright 2021 [and database rights] OS 100030649. You are granted anon-exclusive, royalty free, revocable licence solely to view the Licensed Data for non-commercial purposes for the period during which Highways England makes it available. You are not permitted to copy, sub-license, distribute, sell or otherwise make available the Licensed Data to third parties in any form. Third party rights to enforce the terms of this licence shall be reserved to OS.

©Bluesky International Limited.

File Name: C:\WORKSPACE\GEN-22_ZZ_ZZ\A27\A27-001
 File Date: 18 January 2022 15:01:05
 File Name: C:\WORKSPACE\GEN-22_ZZ_ZZ\A27\A27-001